

LIST OF BACKFLOW PREVENTER APPURTENANCES

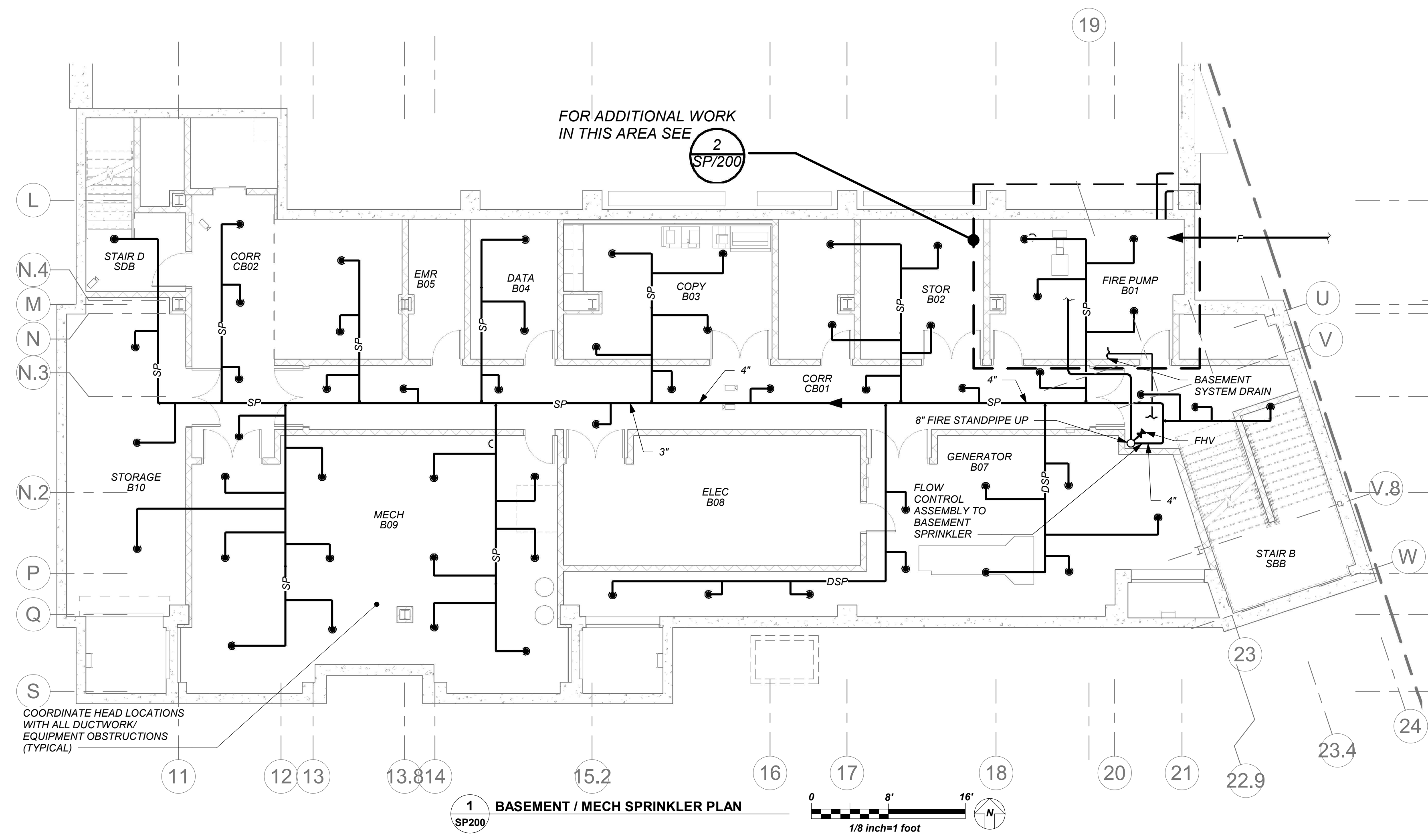
MARK	DESCRIPTION
1	RESILIENT SEATED GATE VALVE
2	TAMPER PROOF RESILIENT SEATED GATE VALVE WITH TAMPER SWITCH
3	STRAINER
4	4" RPZ BACKFLOW PREVENTER - WATTS SERIES 909
5	WATER METER (PER WATER DEPARTMENT)
6	2" TEST OUTLET VALVE
7	PRESSURE REDUCING VALVE
8	AIR GAP (JR SMITH 3955)
9	FUNNEL (JR SMITH 3811)
10	8" DOUBLE CHECK DETECTOR ASSEMBLY-WATTS SERIES 709 DCDA

GENERAL NOTES:

1. LOCATION OF BACKFLOW DEVICES SHALL HAVE ADEQUATE HEAT AND LIGHT.
2. BACKFLOW DEVICES SHALL BE PROTECTED FROM FLOODING.
3. BACKFLOW DEVICES AND WATER METER SHALL BE TESTED AFTER INSTALLATION.
4. OWNER SHALL ARRANGE FOR BACKFLOW DEVICES TO BE TESTED ANNUALLY BY A CERTIFIED TESTER.
5. ANY REVISIONS OR ALTERATION OF THESE PLANS WITHOUT THE EXPRESSED WRITTEN CONSENT OF THE SIGNING ENGINEER IS A VIOLATION OF SECTION 7209 OF THE NEW YORK STATE EDUCATION LAW.

BACKFLOW PREVENTER FILING REQUIREMENTS

- A. THIS CONTRACTOR SHALL BE RESPONSIBLE FOR HIRING A LICENCED ENGINEER TO FILE ALL APPLICATIONS PERMITS AND FILING FEES WITH THE AUTHORITIES HAVING JURISDICTION OVER THE WORK.**
- B. THE FOLLOWING LIST SERVES AS THE MINIMUM FILING REQUIREMENTS, FAILURE TO LIST ANY ITEM DOES NOT RELIEVE THE CONTRACTOR FROM FULFILLING THAT REQUIREMENT.**
1. CERTIFICATE OF RESOLUTION OF LETTER OF AUTHORIZATION FROM OWNER/USER TO AUTHORIZE LICENCED PROFESSIONAL TO EXECUTE FILING.
 2. PREPARE AND SUBMIT FORM DOH-347 WITH PLANS, PROFESSIONAL ENGINEERS REPORT AND SPECIFICATIONS WITH ENGINEER'S SEAL. FILE WITH HEALTH DEPARTMENT AND WATER DEPARTMENT.
 3. FILING FEES, PER DEVICE.
 4. EVIDENCE OF CONFORMANCE TO NEW YORK STATE SANITARY CODE, PART 5 AND CHAPTER 873 OF THE LAWS OF WESTCHESTER COUNTY.



LEGEND

	EXISTING PIPING, FIXTURES, ETC. TO REMAIN
	EXISTING PIPING, FIXTURES, ETC. TO BE REMOVED
	NEW PIPING, FIXTURES, ETC.
	WATER SERVICE PIPING EXTERIOR
	GAS PIPING
	FLOW DIRECTION WITHIN PIPE
	SHUT-OFF VALVE, GATE VALVE
	COMBINATION BALANCING & SHUT-OFF VALVE
	CHECK VALVE
	PIPE CONNS. (BOTTOM; TOP 45 OR 90; PIPE UP)
	PUMP DISCHARGE
	SPRINKLER PIPING
	DRY SPRINKLER PIPING
	FIRE SERVICE PIPING (EXTERIOR)
	SPRINKLER HEAD
	SIDEWALL SPRINKLER HEAD
	FIRE HOSE VALVE & PRV ASSEMBLY
	VENT THRU ROOF
	FRESH AIR INTAKE
	FLOOR DRAIN
	PRESSURE REDUCING VALVE/ PRESSURE REGULATING VALVE
	PLUMBING CONTRACTOR
	GENERAL CONTRACTOR
	POINT OF CONNECTION
	POINT OF DISCONNECTION
	BACKFLOW PREVENTER APPURTENANCE IDENTIFICATION
	PART PLAN, DETAIL, SECTION NUMBER
	SECTION IDENTIFICATION

SPRINKLER GENERAL NOTES

1. CONTRACTOR SHALL NOT CUT ANY STRUCTURAL MEMBERS WITHOUT APPROVAL BY THE ARCHITECT. COORDINATE WITH OTHER PLUMBING AND DUCTWORK.
2. CONTRACTOR SHALL FURNISH AND INSTALL ALL PIPING VALVES, HEADS, TESTS, HANGERS, FITTINGS ANY MISCELLANEOUS COMPONENTS TO RENDER THE SPRINKLER SYSTEM COMPLETE, OPERABLE AND IN ACCORDANCE WITH APPLICABLE CODES AND GENERALLY ACCEPTED INDUSTRY STANDARDS.

FIRE PROTECTION DESIGN SUMMARY (WET SYSTEM)

OCCUPANCY CLASSIFICATION: (NFPA 13)
 ALL AREAS (EXCEPT AS NOTED BELOW): LIGHT HAZARD
 MISCELLANEOUS STORAGE: ORDINARY HAZARD GROUP 1

SPRINKLER SYSTEM TESTS

1. HYDROSTATIC - 200 PSI FOR 2 HOURS WITHOUT LOSS OF PRESSURE.
2. SYSTEM OPERATIONAL TESTS - WATER FLOW DETECTING DEVICES.
3. CONTRACTOR SHALL PERFORM ALL SPRINKLER SYSTEM TESTS REQUIRED BY LOCAL FIRE INSPECTOR OR AUTHORITY HAVING JURISDICTION.
4. ALL TESTS SHALL BE WITNESSED BY LOCAL FIRE INSPECTOR OR AUTHORITY HAVING JURISDICTION. SUBMIT REPORT ON ALL TESTS TO LOCAL FIRE INSPECTOR AND ENGINEER FOR APPROVAL.

SCHEDULE OF SPRINKLER BRANCH PIPING SIZES

PIPE SIZE	MAX # OF SPRINKLER HEADS
1"	2
1-1/4"	3
1-1/2"	5
2"	10
2-1/2"	20
3"	40

NOTES

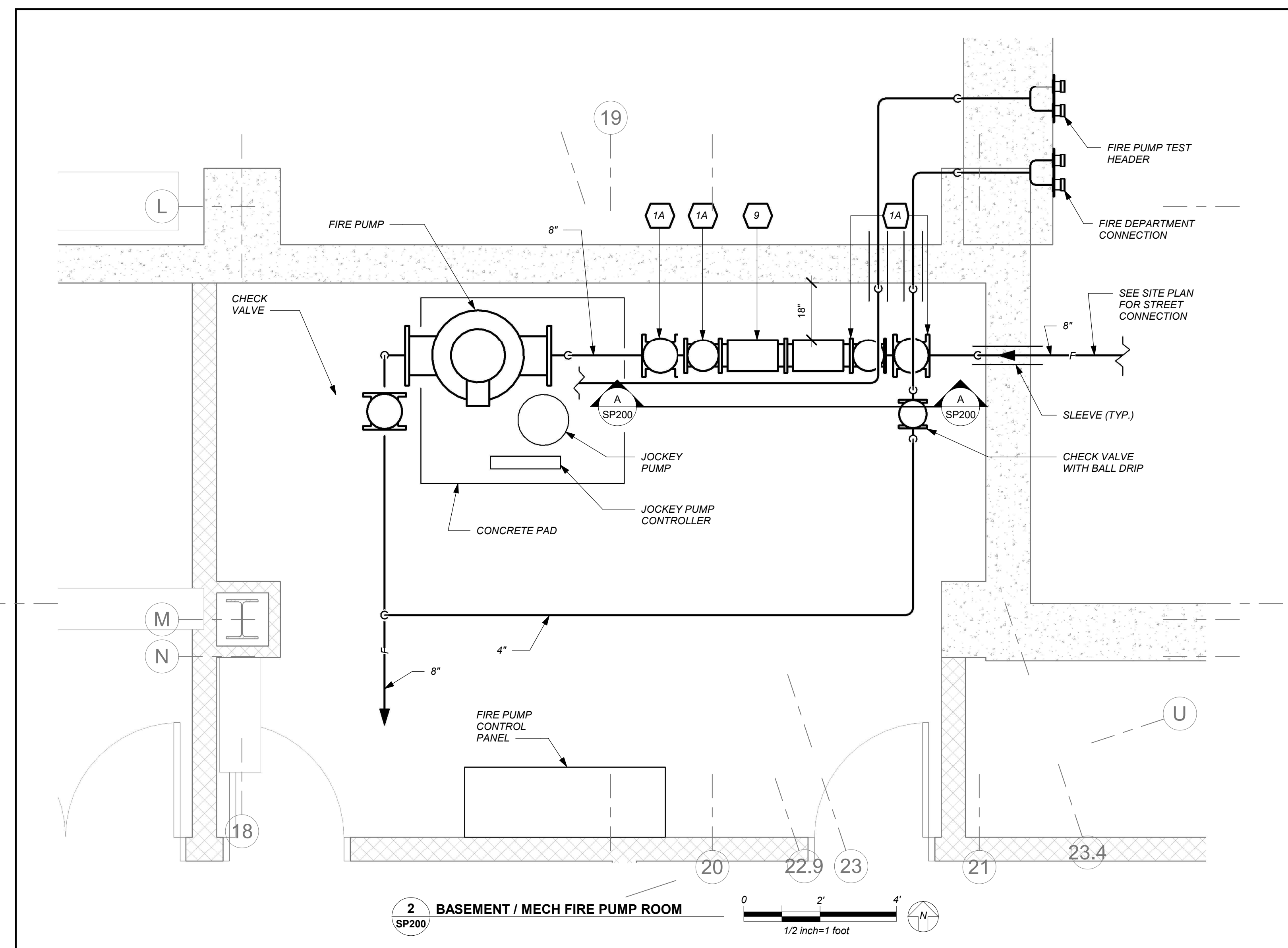
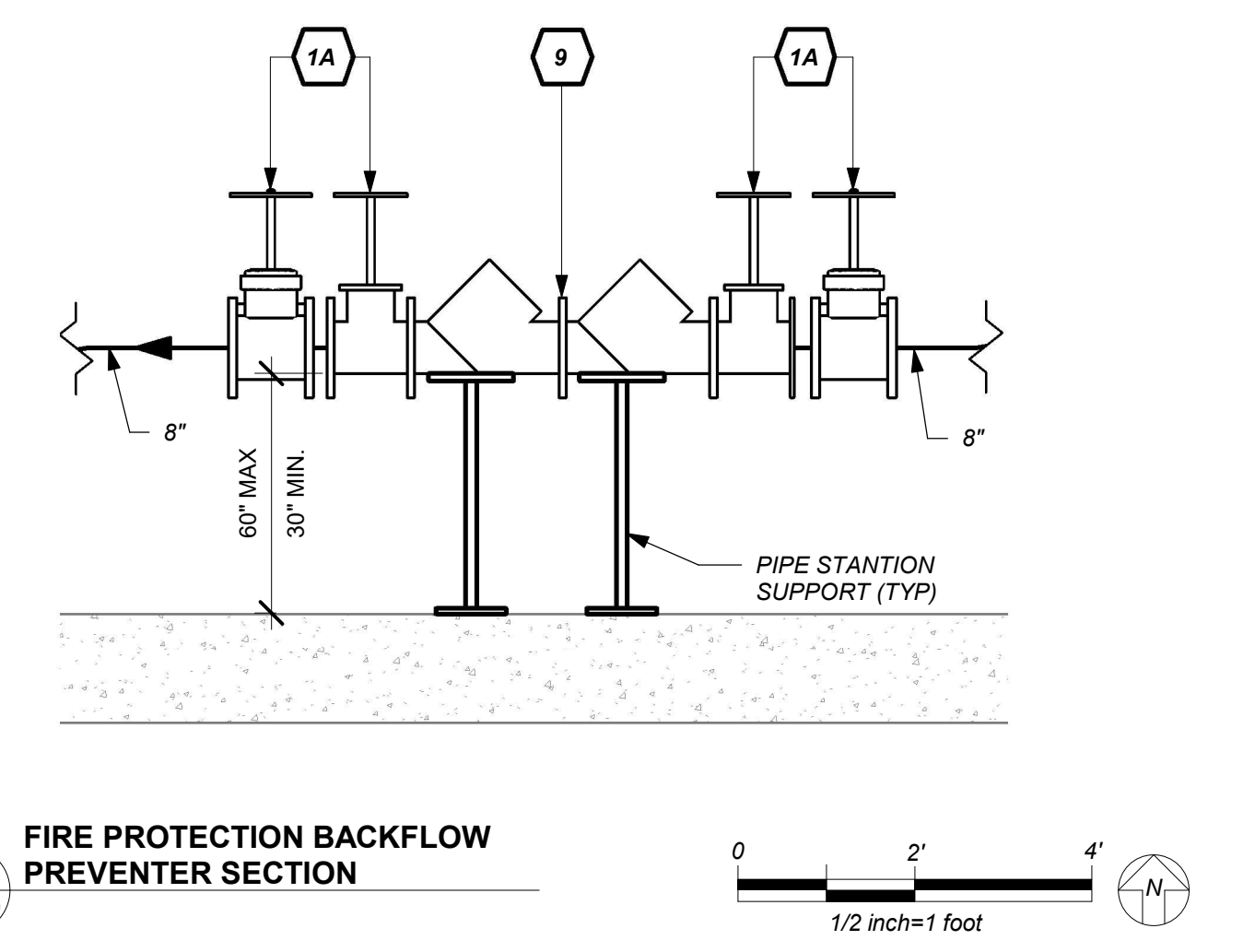
1. MAINS HAVE BEEN SHOWN. CONTRACTOR TO PROVIDE BRANCH PIPING BASED ON NFPA-13 PIPE SCHEDULE METHOD OF PIPE SIZING. HYDRAULIC METHOD WILL BE ACCEPTABLE AS WELL. SUBMIT SHOP DRAWINGS AND HYDRAULIC CALCULATIONS.

BUILDING STRUCTURE FIREPROOFING:

THE BUILDING STRUCTURE WILL BE PROTECTED BY 2" FIREPROOFING THROUGHOUT. THIS CONTRACTOR SHALL ISSUE COORDINATION DRAWINGS ACCORDING TO THE STRICT SCHEDULE OUTLINED IN THE "FRONT END" DOCUMENTS. ALL HANGERS FOR PIPING, CONDUIT, DUCTWORK, EQUIPMENT, ETC. MUST BE IN PLACE BEFORE FIREPROOFING TAKES PLACE. THE INSTALLATION OF HANGERS AFTER THE FACT THAT REQUIRES THE RE-APPLICATION OF FIREPROOFING WILL BE AT THE EXPENSE OF THIS CONTRACTOR.

BASEMENT WATERPROOFING:

REFER TO STRUCTURAL DRAWINGS AND ARCHITECTURAL DRAWINGS FOR SLAB/ WALL THICKNESS AND PENETRATION DETAILS. COORDINATE WITH G.C.



NEW COMMUNITY SCHOOL AT THE ST DENIS SITE

YONKERS JOINT SCHOOL CONSTRUCTION BOARD
 121 McLean Avenue
 Yonkers, NY 10705



KG+D . ARCHITECTS PC
 285 MAIN STREET MOUNT KISCO, NEW YORK, 10549
 P914.686.5900 KGDARCHITECTS.COM

NY SED PROJECT CONTROL NO.

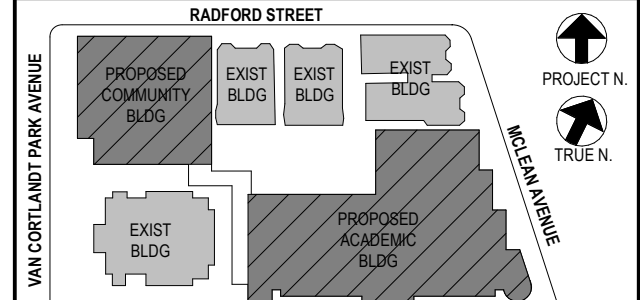
66-23-00-01-0-346-001

CONSTRUCTION DOCUMENTS



BARILE GALLAGHER & ASSOCIATES

CONSULTING ENGINEERS
 99 MARBLE AVE. PLEASANTVILLE, NY 10570
 914.326.0099 GENERAL@BGA-ENG.COM WWW.BGA-ENG.COM



NOTE: ALL LOCAL SESSIONS, AMENDMENTS AND PLANS INDICATED OR REPRESENTED BY THIS DRAWING ARE OWNED BY AND ARE THE PROPERTY OF ANKER GARDNER & SHAWSON ARCHITECTS PC (AGS) AND WERE CREATED FOR USE ON THIS PROJECT. NONE OF SUCH IDEAS, DESIGNS, ARRANGEMENTS OR PLANS SHALL BE USED BY OR DISCLOSED TO ANY PURPOSE WHATSOEVER WITHOUT THE WRITTEN PERMISSION OF AGS.

WRITTEN DIMENSIONS ON THIS DRAWING SHALL HAVE PRECEDENCE OVER UNLabeled DIMENSIONS. CONTRACTOR SHALL VERIFY ALL ACTUAL DIMENSIONS AND CONDITIONS ON THE JOB AND THE ARCHITECT MUST BE NOTIFIED OF ANY VARIATIONS FROM DIMENSIONS AND CONDITIONS SHOWN. SHOP DETAILS MUST BE SUBMITTED TO THIS OFFICE FOR APPROVAL BEFORE PROCEEDING WITH FABRICATION.

ALTERATIONS BY ANY PERSON IN ANY WAY OF ANY ITEM CONTAINED ON THIS DOCUMENT, UNLESS ACTING UNDER THE DIRECTION OF THE LICENSED ARCHITECT, WHOSE PROFESSIONAL SEAL IS AFFIXED HERETO, IS A VIOLATION OF TITLE 16, SECT. 81-3.5 OF NEW YORK STATE LAW. COPYRIGHT ANKER GARDNER & SHAWSON ARCHITECTS S ENGINEERS, PC. ALL RIGHTS RESERVED.

Professional Seal

4	01/13/2022	CONFORMED SET
3	11/01/2021	ISSUED TO BID
2	07/14/2021	CONSTRUCTION DOCS-NYS&D
1	12/15/2020	DESIGN DEVELOPMENT

No. Date Issue

Sheet Title

Legend, Schedule, Notes, and Basement Floor Sprinkler Plan

Job No. 2019-1026 Date 11/17/20

Scale AS NOTED Drawn / Checked BGA / BGA

Sheet Number

SP200

BEFORE FABRICATION THIS CONTRACTOR SHALL VERIFY ALL MEASUREMENTS AND CONDITIONS ON JOB AND COORDINATE HIS WORK WITH THE WORK OF ALL OTHER CONTRACTORS

NEW COMMUNITY SCHOOL AT THE ST DENIS SITE

YONKERS JOINT SCHOOL CONSTRUCTION BOARD
121 McLean Avenue
Yonkers, NY 10705



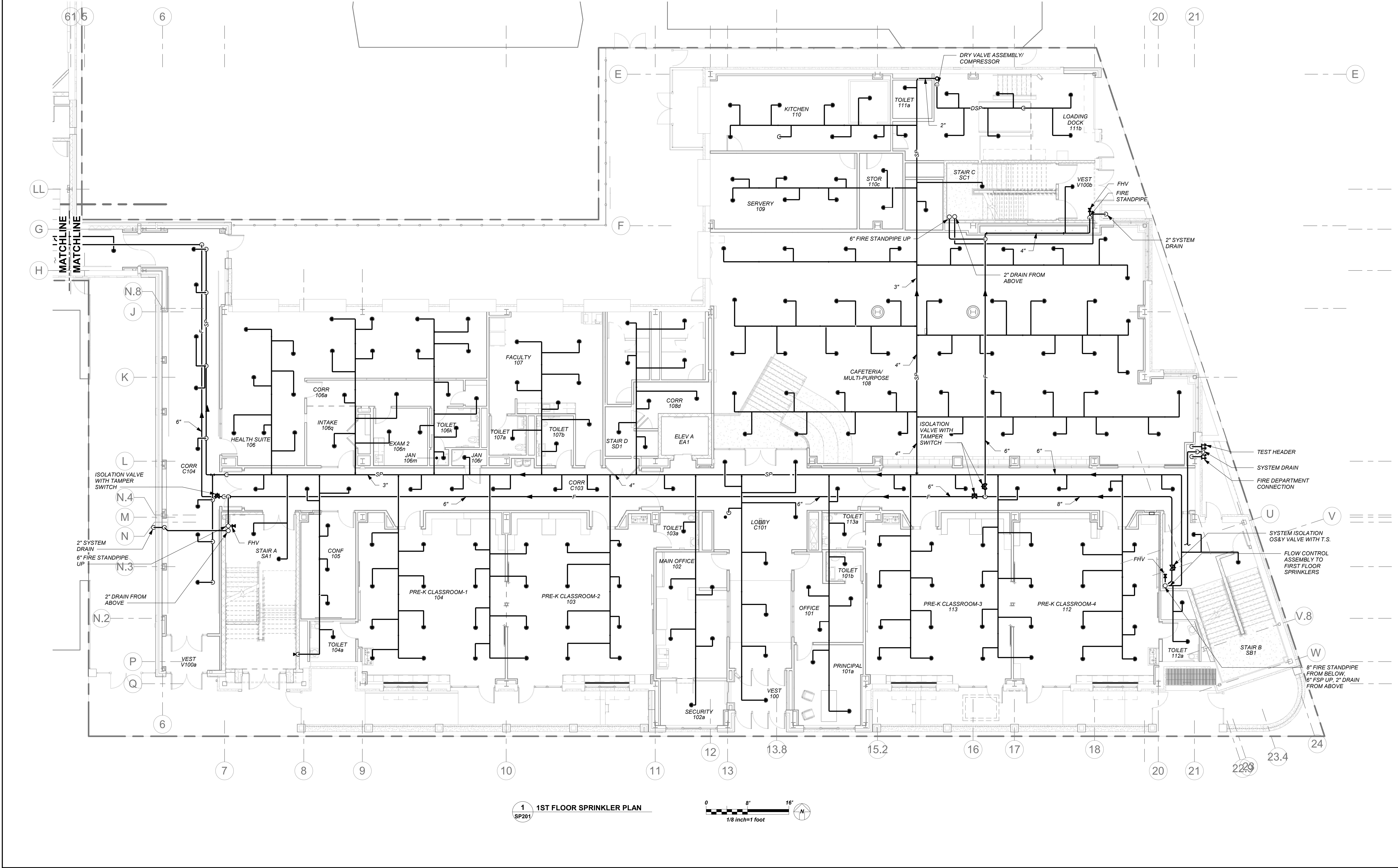
KG+D . ARCHITECTS PC
285 MAIN STREET MOUNT KISCO, NEW YORK, 10549
P.914.666.5900 KGDARCHITECTS.COM

NY SED PROJECT CONTROL NO.
66-23-00-01-0-346-001

CONSTRUCTION DOCUMENTS

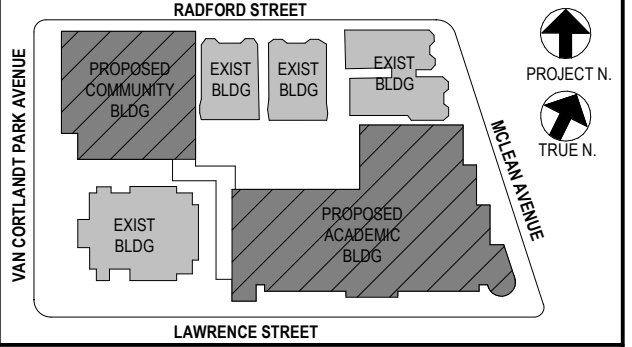


BARILE GALLAGHER & ASSOCIATES
CONSULTING ENGINEERS
99 MARBLE AVE. PLEASANTVILLE, NY 10570
P.914.268.0099 GENERAL@BGA-ENG.COM WWW.BGA-ENG.COM



1 1ST FLOOR SPRINKLER PLAN
SP201

0 8' 16'
1/8 inch=1 foot



NOTE: ALL LOCAL REGIONAL JURISDICTIONS ARE PLANNED AND INDICATED OR REPRESENTED BY THIS DRAWING ARE OWNED BY AND ARE THE PROPERTY OF KATYER GARBETT & ASSOCIATES ARCHITECTS PC HEREIN AND HEREIN CREATED FOR USE ON THIS PROJECT. NONE OF SUCH IDEAS, DESIGNS, ARRANGEMENTS OR PLANS SHALL BE USED BY OR DISCLOSED TO ANY PURPOSE WHATSOEVER WITHOUT THE WRITTEN PERMISSION OF KG+D.

WRITTEN DIMENSIONS ON THIS DRAWING SHALL HAVE PRECEDENCE OVER SCALED DIMENSIONS. CONTRACTOR SHALL VERIFY ALL ACTUAL DIMENSIONS AND CONDITIONS ON THE JOB AND THE ARCHITECT MUST BE NOTIFIED OF ANY VARIATIONS FROM DIMENSIONS AND CONDITIONS SHOWN. SHOP DETAILS MUST BE SUBMITTED TO THIS OFFICE FOR APPROVAL BEFORE PROCEEDING WITH FABRICATION.

ALTERATIONS BY ANY PERSON IN ANY WAY OF ANY ITEM CONTAINED ON THIS DOCUMENT, UNLESS ACTING UNDER THE DIRECTION OF THE LICENSED ARCHITECT WHOSE PROFESSIONAL SEAL IS AFFIXED HERETO, IS A VIOLATION OF TITLE 16, SECT. 16-1.55 OF NEW YORK STATE LAW. COPYRIGHT KATYER GARBETT & ASSOCIATES ARCHITECTS & ENGINEERS, PC. ALL RIGHTS RESERVED.

Professional Seal

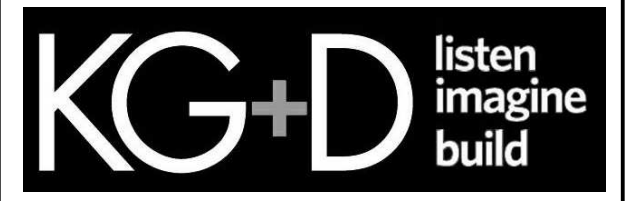
No.	Date	Issue
4	01/13/2022	CONFORMED SET
3	11/01/2021	ISSUED TO BID
2	07/14/2021	CONSTRUCTION DOCS-NYS&D
1	12/15/2020	DESIGN DEVELOPMENT

Sheet Title	
1st Floor Plan	
Job No.	Date
2019-1026	11/17/20
Scale	Drawn / Checked
AS NOTED	BGA / BGA
Sheet Number	
SP201	

BEFORE FABRICATION THIS CONTRACTOR SHALL VERIFY ALL MEASUREMENTS AND CONDITIONS ON JOB AND COORDINATE HIS WORK WITH THE WORK OF ALL OTHER CONTRACTORS

NEW COMMUNITY SCHOOL AT THE ST DENIS SITE

YONKERS JOINT SCHOOL CONSTRUCTION BOARD
121 McLean Avenue
Yonkers, NY 10705



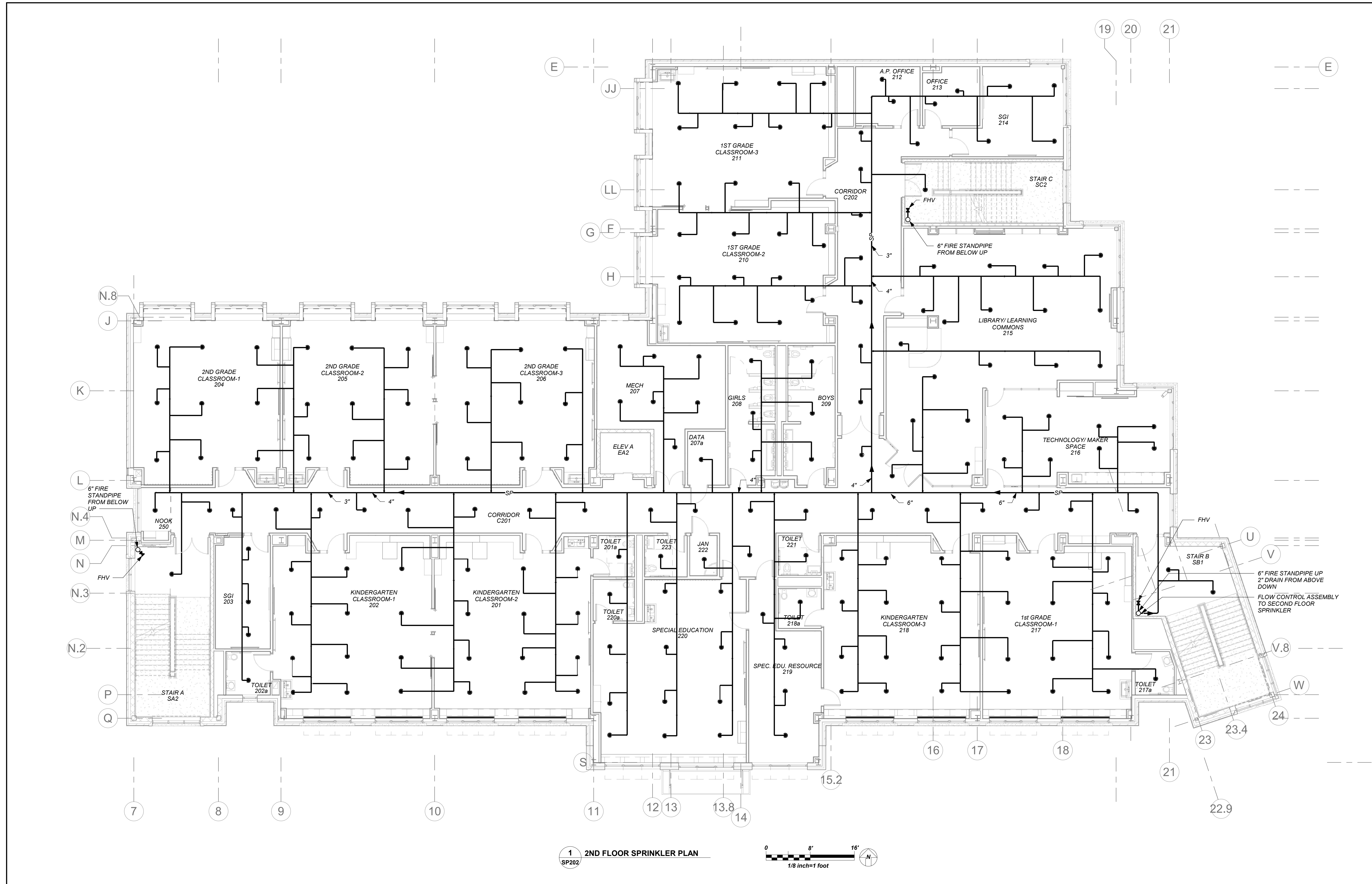
KG+D . ARCHITECTS PC
285 MAIN STREET MOUNT KISCO, NEW YORK, 10549
P.914.666.5900 KGDARCHITECTS.COM

NY SED PROJECT CONTROL NO.
66-23-00-01-0-346-001

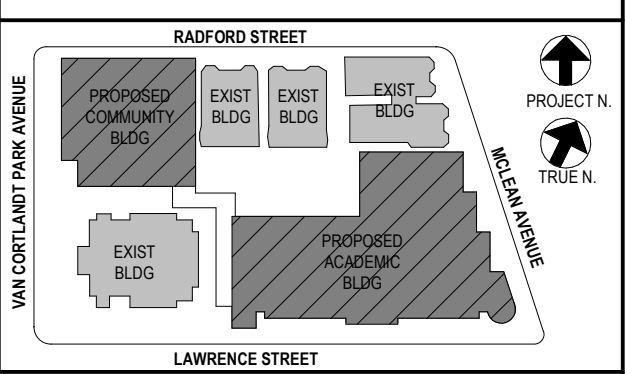
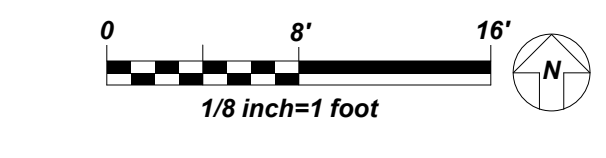
CONSTRUCTION DOCUMENTS



BARILE GALLAGHER & ASSOCIATES
CONSULTING ENGINEERS
99 MARBLE AVE. PLEASANTVILLE, NY 10570
914.326.0099 GENERAL@BGA-ENG.COM WWW.BGA-ENG.COM



1 2ND FLOOR SPRINKLER PLAN
SP202



NOTE: ALL IDEAL ROOM ARRANGEMENTS AND PLANS INDICATED OR REPRESENTED BY THIS DRAWING ARE OWNED BY AND ARE THE PROPERTY OF BARILE GALLAGHER & ASSOCIATES, P.C. (BGA) AND WERE CREATED FOR USE ON THIS PROJECT. NONE OF SUCH IDEAS, DESIGNS, ARRANGEMENTS OR PLANS SHALL BE USED BY OR DISCLOSED TO ANY PURPOSE WHATSOEVER WITHOUT THE WRITTEN PERMISSION OF BGA.

WRITTEN DIMENSIONS ON THIS DRAWING SHALL HAVE PRECEDENCE OVER SCALED DIMENSIONS. CONTRACTOR SHALL VERIFY ALL ACTUAL DIMENSIONS AND CONDITIONS ON THE JOB AND THE ARCHITECT MUST BE NOTIFIED OF ANY VARIATIONS FROM DIMENSIONS AND CONDITIONS SHOWN. SHOP DETAILS MUST BE SUBMITTED TO THIS OFFICE FOR APPROVAL BEFORE PROCEEDING WITH FABRICATION.

ALTERATIONS BY ANY PERSON IN ANY WAY OF ANY ITEM CONTAINED ON THIS DOCUMENT, UNLESS ACTING UNDER THE DIRECTION OF THE LICENSED ARCHITECT, ENGINEER, PROFESSIONAL SEAL, OR PROFESSIONAL ENGINEER, IS A VIOLATION OF TITLE 16, SECTION 17-1.5 OF NEW YORK STATE LAW. COPYRIGHT BARILE GALLAGHER & ASSOCIATES, P.C. ALL RIGHTS RESERVED.

Professional Seal

No.	Date	Issue
4	01/13/2022	CONFORMED SET
3	11/01/2021	ISSUED TO BID
2	07/14/2021	CONSTRUCTION DOCS-NYS&D
1	12/15/2020	DESIGN DEVELOPMENT

Sheet Title

2nd Floor Plan

Job No.	2019-1026	Date	11/17/20
Scale	AS NOTED	Drawn / Checked	BGA / BGA

Sheet Number
SP202

BEFORE FABRICATION THIS CONTRACTOR SHALL VERIFY ALL MEASUREMENTS AND CONDITIONS ON JOB AND COORDINATE HIS WORK WITH THE WORK OF ALL OTHER CONTRACTORS

NEW COMMUNITY SCHOOL AT THE ST DENIS SITE

YONKERS JOINT SCHOOL CONSTRUCTION BOARD
121 McLean Avenue
Yonkers, NY 10705



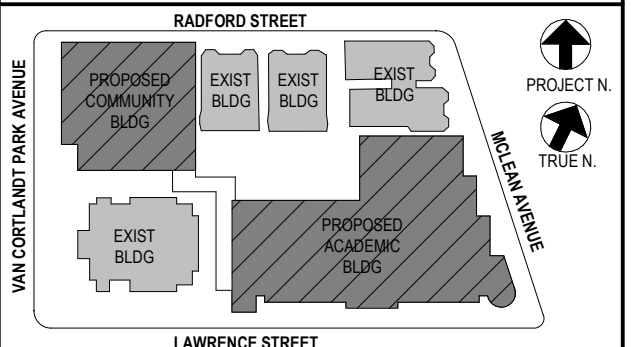
KG+D . ARCHITECTS PC
285 MAIN STREET MOUNT KISCO, NEW YORK, 10549
P.914.666.5900 KGDARCHITECTS.COM

NY SED PROJECT CONTROL NO.
66-23-00-01-0-346-001

CONSTRUCTION DOCUMENTS



BARILE GALLAGHER & ASSOCIATES
CONSULTING ENGINEERS
99 MARBLE AVE. PLEASANTVILLE, NY 10570
P.914.226.0099 GENERAL@BGA-ENG.COM WWW.BGA-ENG.COM



NOTE: ALL IDEAL DESIGN ARRANGEMENTS ARE PLANNED AND INDICATED OR REPRESENTED BY THIS DRAWING AND OWNED BY AND ARE THE PROPERTY OF BARILE GALLAGHER & ASSOCIATES, INC. (BGA). ANY REUSE OR REPRODUCTION OF THIS DRAWING FOR ANY OTHER PROJECT WITHOUT THE WRITTEN PERMISSION OF BGA IS STRICTLY PROHIBITED. ANY VARIATIONS FROM DIMENSIONS AND CONDITIONS SHOWN, SHIP DETAILS MUST BE SUBMITTED TO THIS OFFICE FOR APPROVAL BEFORE PROCEEDING WITH FABRICATION.

WRITTEN DIMENSIONS ON THIS DRAWING SHALL HAVE PRECEDENCE OVER SCALED DIMENSIONS. CONTRACTOR SHALL VERIFY ALL ACTUAL DIMENSIONS AND CONDITIONS ON THE JOB AND THE ARCHITECT MUST BE NOTIFIED OF ANY VARIATIONS FROM DIMENSIONS AND CONDITIONS SHOWN. SHIP DETAILS MUST BE SUBMITTED TO THIS OFFICE FOR APPROVAL BEFORE PROCEEDING WITH FABRICATION.

ALTERATIONS BY ANY PERSON IN ANY WAY OF ANY ITEM CONTAINED ON THIS DOCUMENT, UNLESS ACTING UNDER THE DIRECTION OF THE LICENSED ARCHITECT, ENGINEER, PROFESSIONAL DESIGNER OR PROFESSIONAL ENGINEER, IS A VIOLATION OF TITLE 16, SECTION 17-05 OF NEW YORK STATE LAW.

COPYRIGHT © 2022 BARILE GALLAGHER & ASSOCIATES, INC. ALL RIGHTS RESERVED.

Professional Seal

No.	Date	Issue
4	01/13/2022	CONFORMED SET
3	11/01/2021	ISSUED TO BID
2	07/14/2021	CONSTRUCTION DOCS-NYSED
1	12/15/2020	DESIGN DEVELOPMENT

Sheet Title

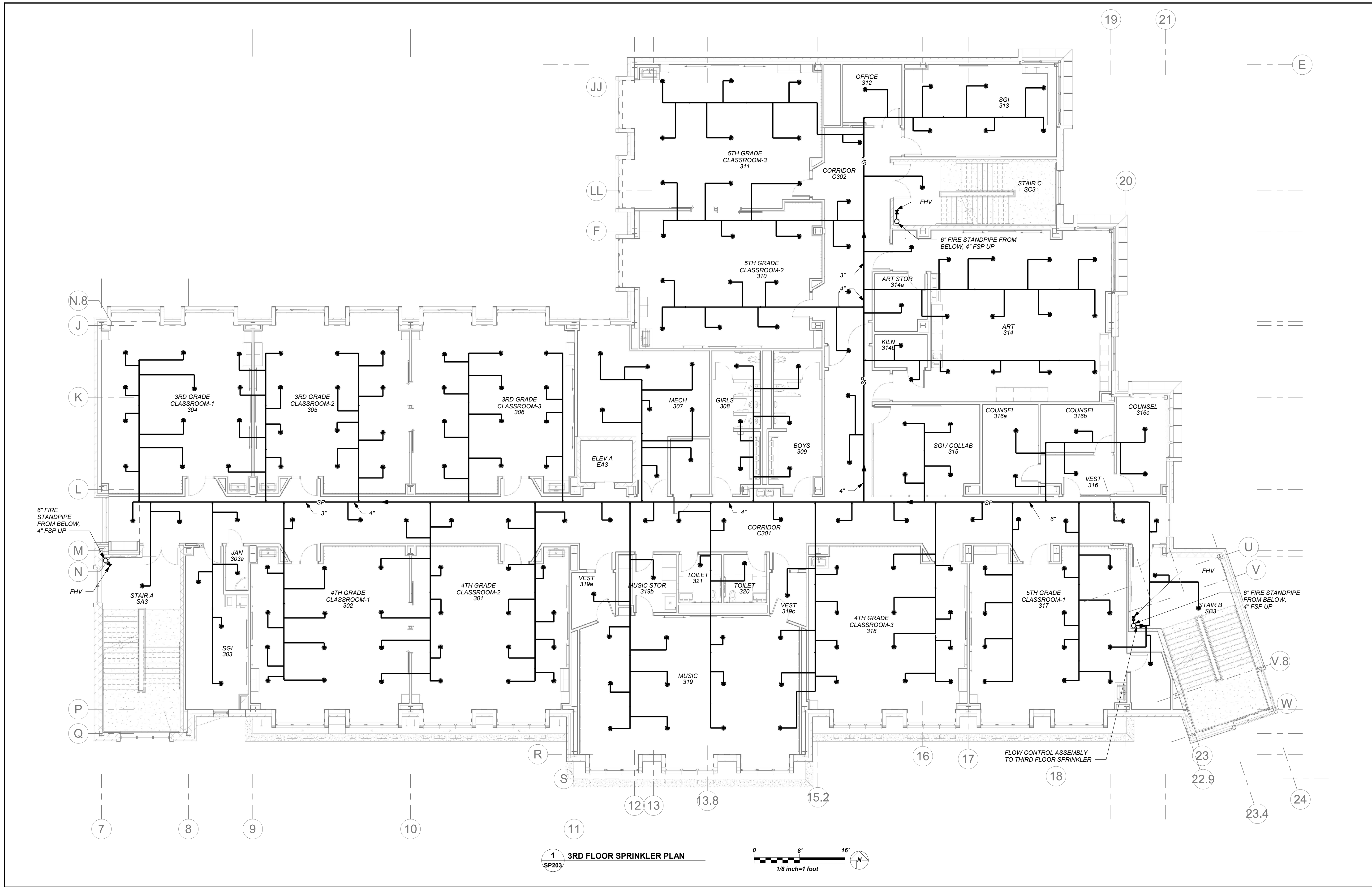
3rd Floor Plan

Job No. 2019-1026 Date 11/17/20

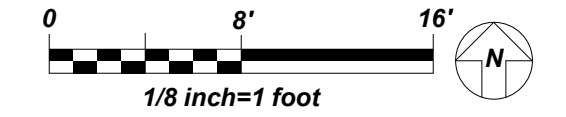
Scale AS NOTED Drawn / Checked BGA / BGA

Sheet Number

SP203



1 3RD FLOOR SPRINKLER PLAN
SP203



BEFORE FABRICATION THIS CONTRACTOR SHALL VERIFY ALL MEASUREMENTS AND CONDITIONS ON JOB AND COORDINATE HIS WORK WITH THE WORK OF ALL OTHER CONTRACTORS

NEW COMMUNITY SCHOOL AT THE ST DENIS SITE

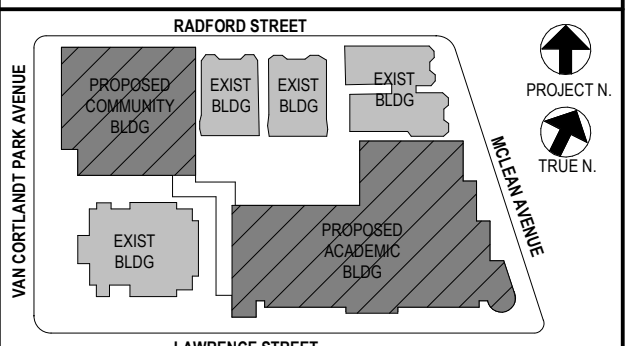
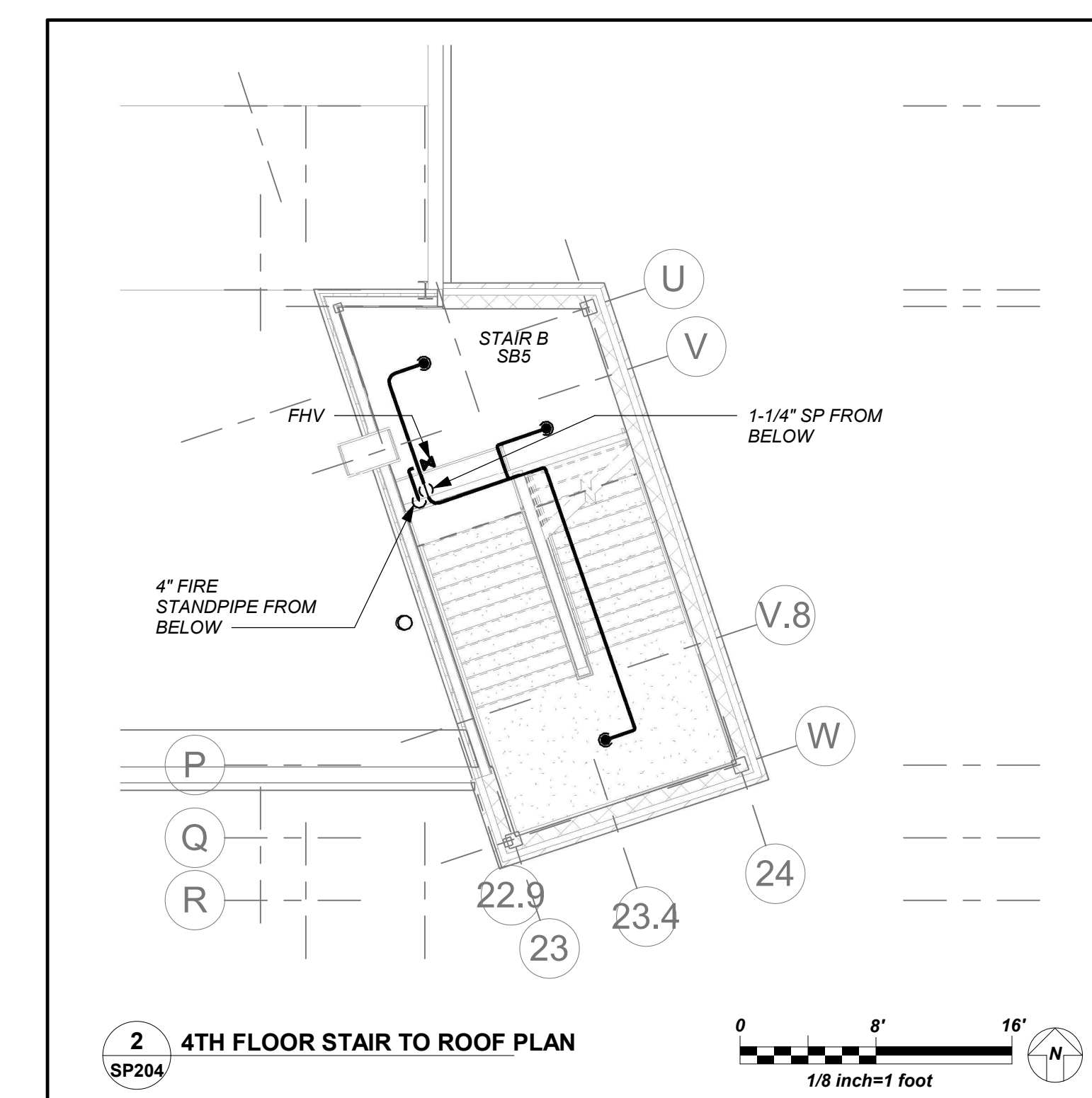
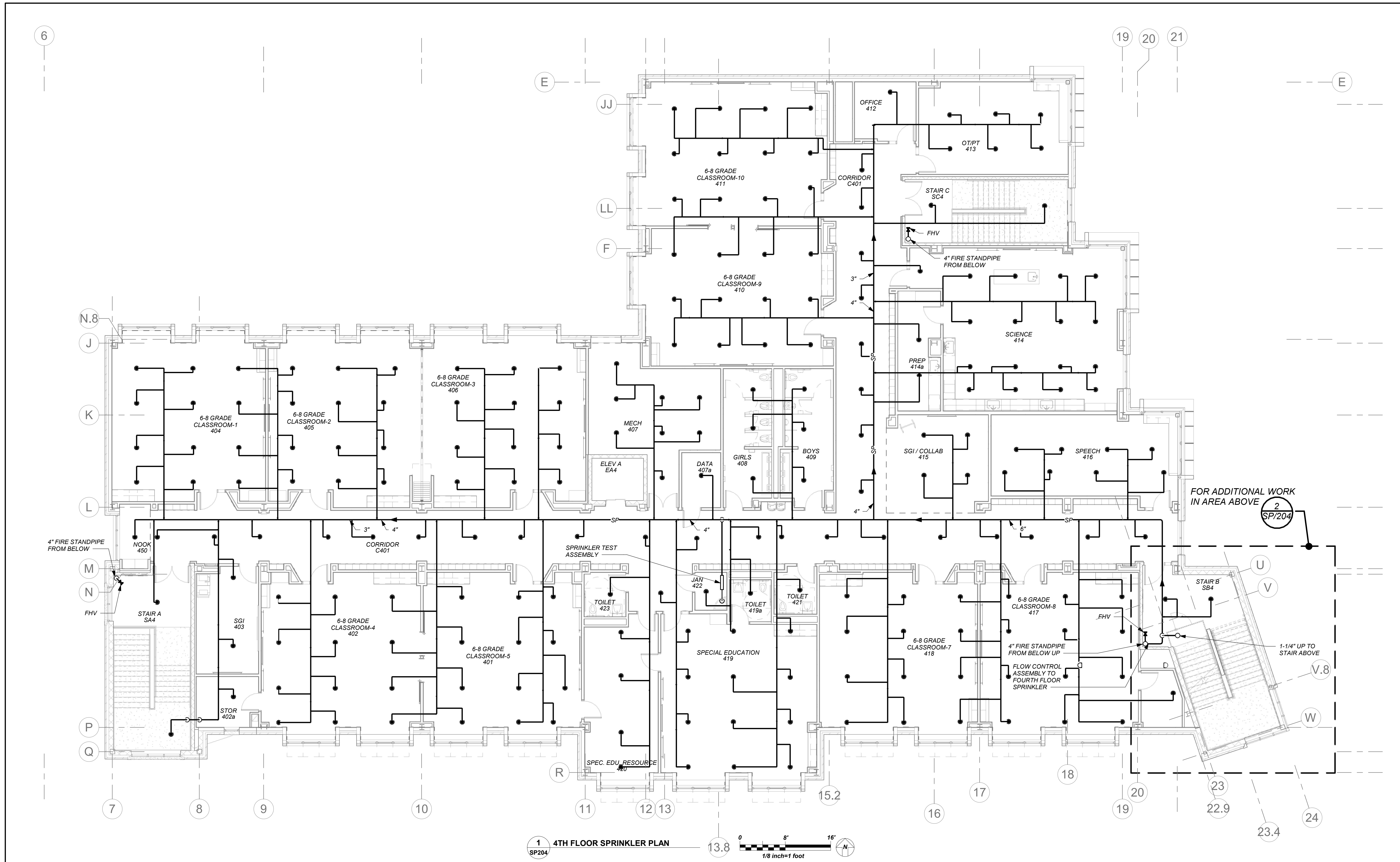
YONKERS JOINT SCHOOL CONSTRUCTION BOARD
121 McLean Avenue
Yonkers, NY 10705

KG+D listen imagine build
KG+D . ARCHITECTS PC
285 MAIN STREET MOUNT KISCO, NEW YORK, 10549
P.914.666.5900 KGDARCHITECTS.COM

NY SED PROJECT CONTROL NO.
66-23-00-01-0-346-001

CONSTRUCTION DOCUMENTS

bga
BARILE GALLAGHER & ASSOCIATES
CONSULTING ENGINEERS
99 MARBLE AVE. PLASANTVILLE, NY 10570
PLASANTVILLE@BGA-ENG.COM WWW.BGA-ENG.COM



NOTE: ALL LOCAL ORDINANCES, ARRANGEMENTS AND PLANS INDICATED OR REPRESENTED BY THIS DRAWING ARE OWNED BY AND ARE THE PROPERTY OF KATYER GARMENT & SHAWSON ARCHITECTS, P.C. THESE ARE HEREBY CREATED FOR USE ON THIS PROJECT. NONE OF SUCH IDEAS, DESIGNS, ARRANGEMENTS OR PLANS SHALL BE USED BY OR DISCLOSED TO ANY PURPOSE WHATSOEVER WITHOUT THE WRITTEN PERMISSION OF KATYER GARMENT & SHAWSON ARCHITECTS, P.C.

WRITTEN DIMENSIONS ON THIS DRAWING SHALL HAVE PRECEDENCE OVER SCALED DIMENSIONS. CONTRACTOR SHALL VERIFY ALL ACTUAL DIMENSIONS AND CONDITIONS ON THE JOB AND THE ARCHITECT MUST BE NOTIFIED OF ANY VARIATIONS FROM DIMENSIONS AND CONDITIONS SHOWN. SHOP DETAILS MUST BE SUBMITTED TO THIS OFFICE FOR APPROVAL BEFORE PROCEEDING WITH FABRICATION.

ALTERATIONS BY ANY PERSON IN ANY WAY OF ANY ITEM CONTAINED ON THIS DOCUMENT, UNLESS ACTING UNDER THE DIRECTION OF THE LICENSED ARCHITECT, WHOSE PROFESSIONAL SEAL IS AFFIXED HERETO, IS A VIOLATION OF TITLE 16, SECTION 17-1.5 OF NEW YORK STATE LAW. COPYRIGHT KATYER GARMENT & SHAWSON ARCHITECTS S ENGINEERS, P.C. ALL RIGHTS RESERVED.

Professional Seal

No.	Date	Issue
4	01/13/2022	CONFORMED SET
3	11/01/2021	ISSUED TO BID
2	07/14/2021	CONSTRUCTION DOCS-NYS&D
1	12/15/2020	DESIGN DEVELOPMENT

Sheet Title

4th Floor Plan

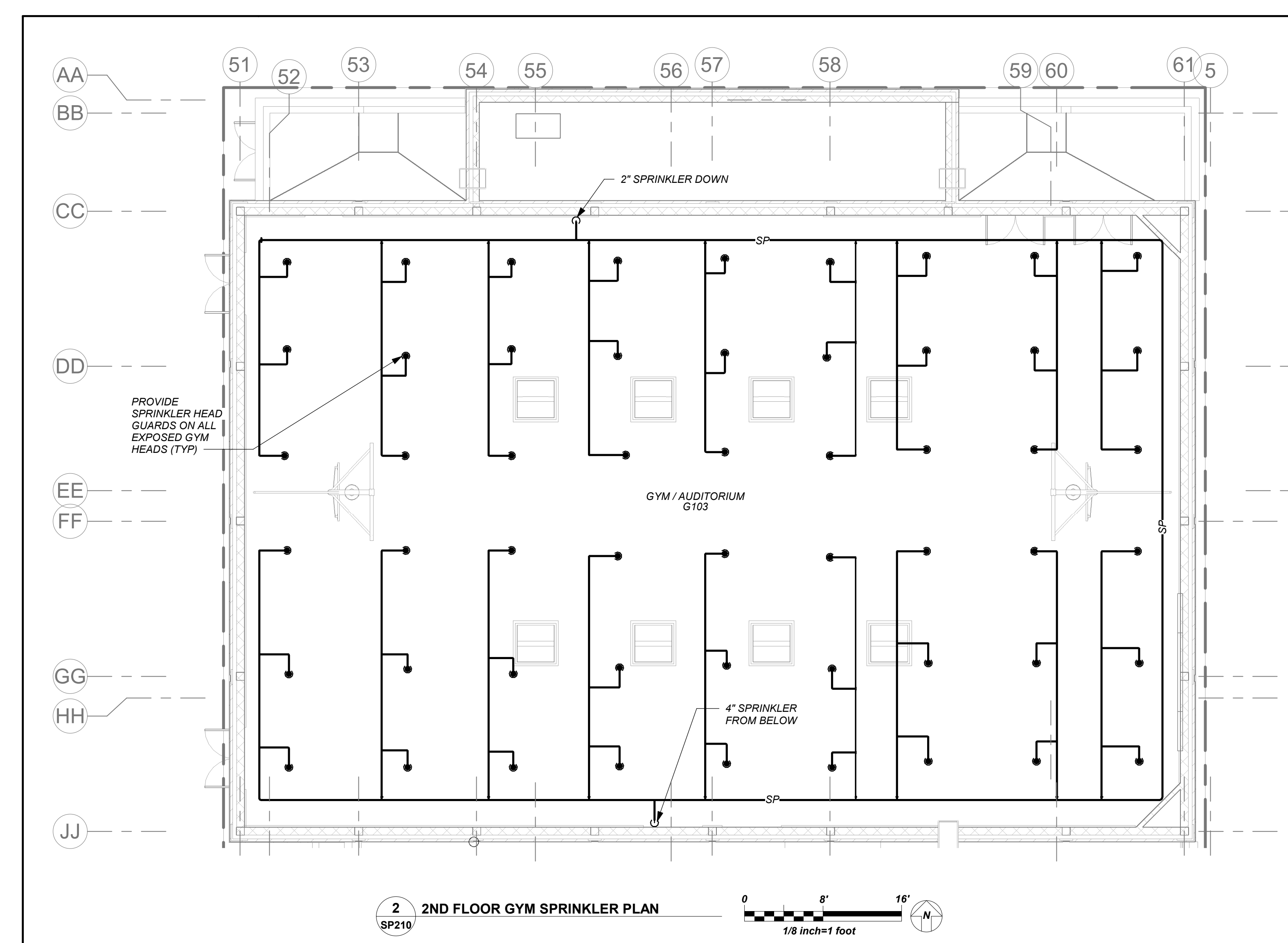
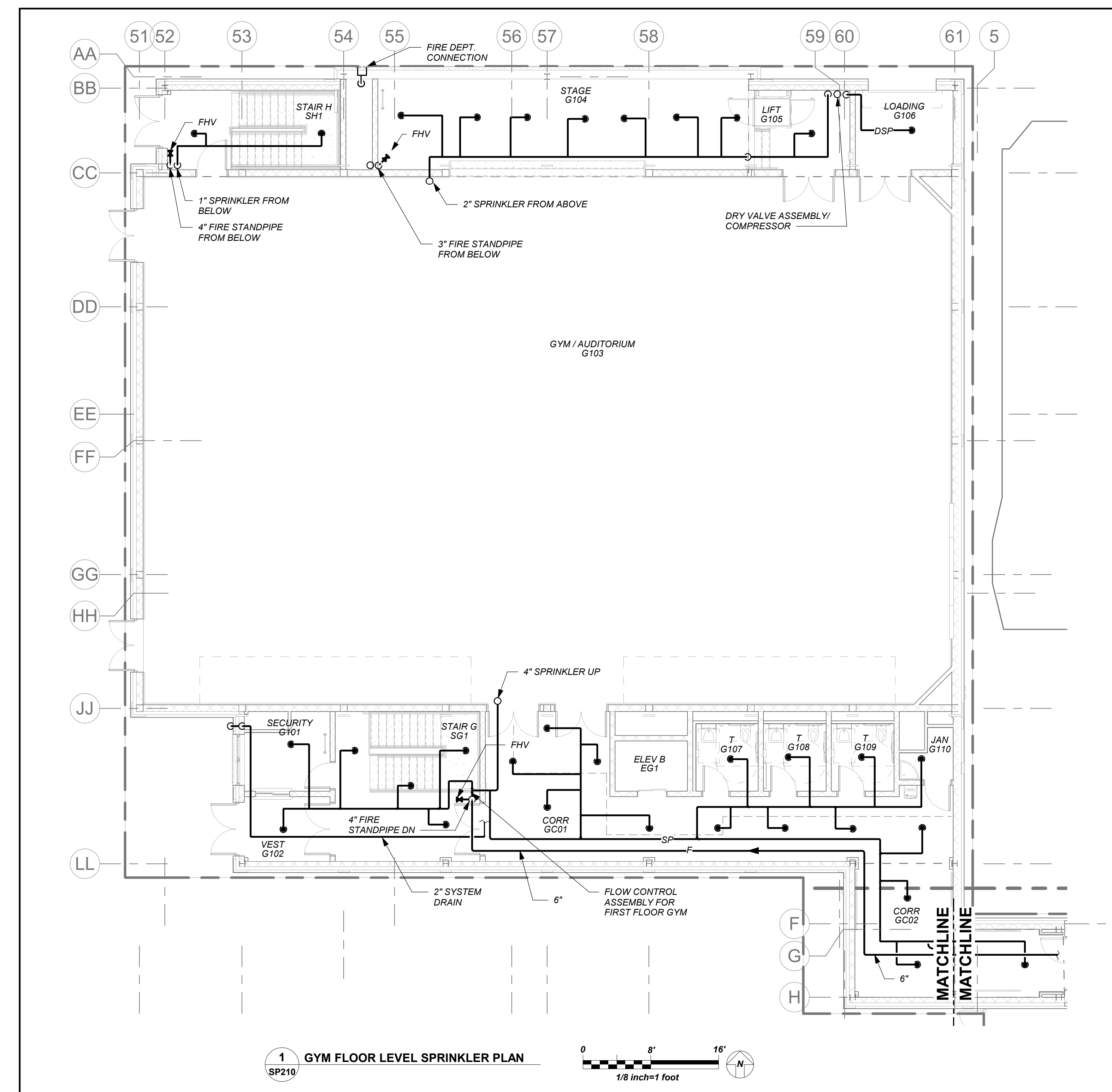
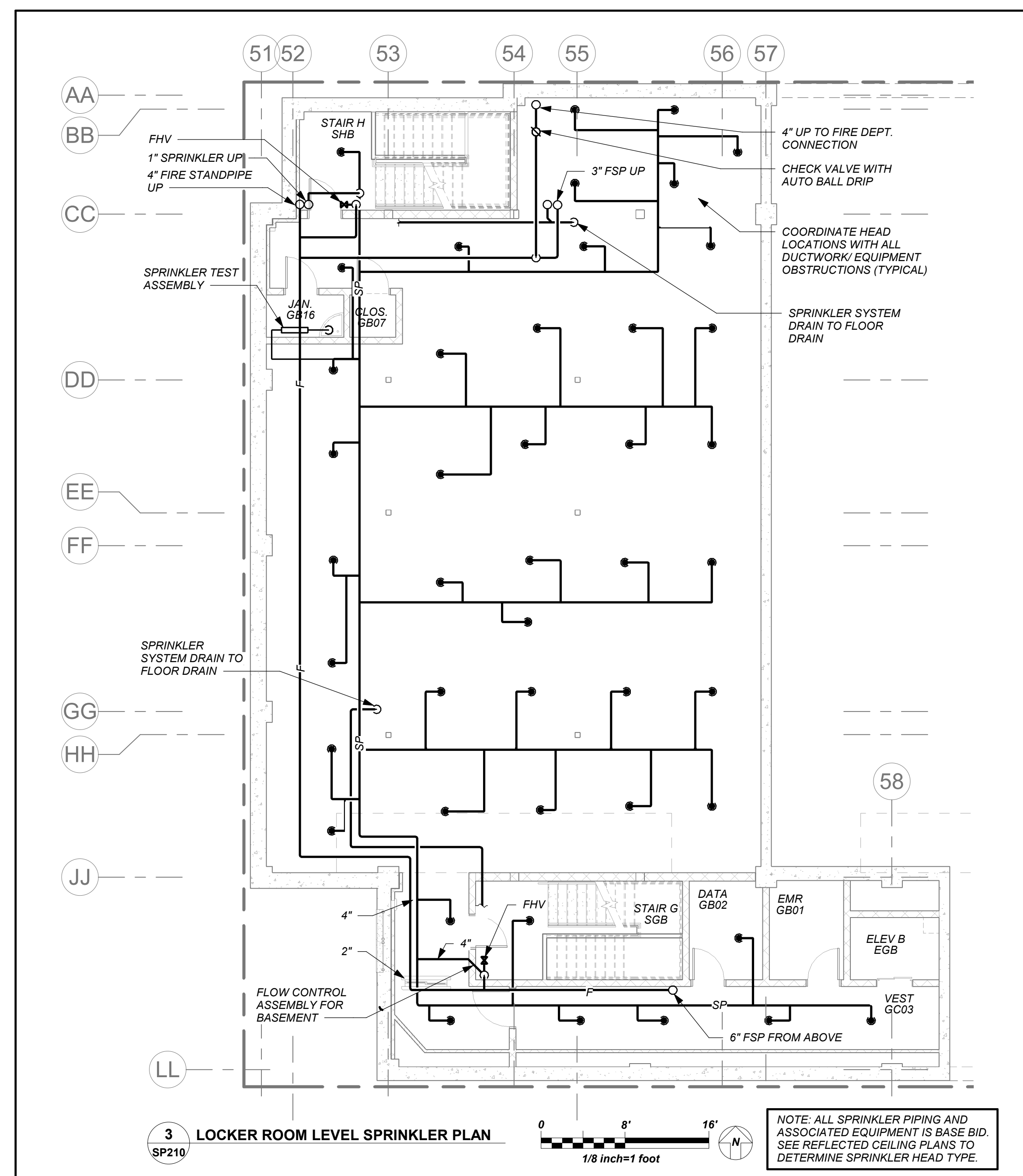
Job No. 2019-1026 Date 11/17/20

Scale AS NOTED Drawn / Checked BGA / BGA

Sheet Number

SP204

BEFORE FABRICATION THIS CONTRACTOR SHALL VERIFY ALL MEASUREMENTS AND CONDITIONS ON JOB AND COORDINATE HIS WORK WITH THE WORK OF ALL OTHER CONTRACTORS



BEFORE FABRICATION THIS CONTRACTOR SHALL VERIFY ALL MEASUREMENTS AND CONDITIONS ON JOB AND COORDINATE HIS WORK WITH THE WORK OF ALL OTHER CONTRACTORS

1/14/2022 2:01:24 PM

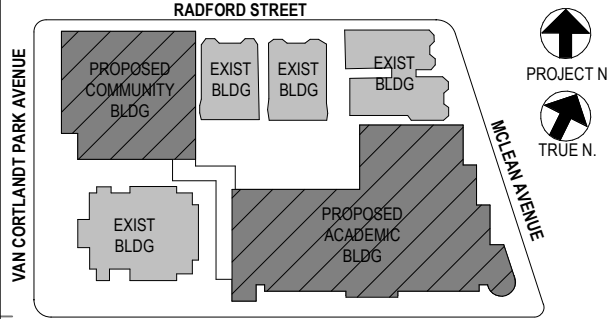
NEW COMMUNITY SCHOOL AT THE ST DENIS SITE
 YONKERS JOINT SCHOOL CONSTRUCTION BOARD
 121 McLean Avenue
 Yonkers, NY 10705

KG+D listen imagine build
 KG+D . ARCHITECTS PC
 285 MAIN STREET MOUNT KISCO, NEW YORK, 10549
 P.914.686.5900 KGDARCHITECTS.COM

NY SED PROJECT CONTROL NO.
 66-23-00-01-0-346-001

CONSTRUCTION DOCUMENTS

 BARILE GALLAGHER & ASSOCIATES
 CONSULTING ENGINEERS
 99 MARBLE AVE. PLEASANTVILLE, NY 10570
 914.268.0099 GENERAL@BGA-ENG.COM WWW.BGA-ENG.COM



NOTE: ALL LOCAL DESIGN ARRANGEMENTS ARE PLANNED AND INDICATED OR REPRESENTED BY THIS DRAWING ARE OWNED BY AND ARE THE PROPERTY OF INTER-GARMENT & ASSOCIATES ARCHITECTS PC. HEADS AND HEREIN CREATED FOR USE ON THIS PROJECT. NONE OF SUCH IDEAS, DESIGNS, ARRANGEMENTS OR PLANS SHALL BE USED BY OR DISCLOSED TO ANY PURPOSER WHATSOEVER WITHOUT THE WRITTEN PERMISSION OF INTER-GARMENT & ASSOCIATES ARCHITECTS PC.
 WRITTEN DIMENSIONS ON THIS DRAWING SHALL HAVE PRECEDENCE OVER UNLabeled DIMENSIONS. CONTRACTOR SHALL VERIFY ALL ACTUAL DIMENSIONS AND CONDITIONS ON THE JOB AND THE ARCHITECT MUST BE NOTIFIED OF ANY VARIATIONS FROM DIMENSIONS AND CONDITIONS SHOWN. SHOP DETAILS MUST BE SUBMITTED TO THIS OFFICE FOR APPROVAL BEFORE PROCEEDING WITH FABRICATION.
 ALTERATIONS BY ANY PERSON IN ANY WAY OF ANY ITEM CONTAINED ON THIS DOCUMENT, UNLESS ACTING UNDER THE DIRECTION OF THE LICENSED ARCHITECT, ENGINEER, PROFESSIONAL DESIGNER OR PROFESSIONAL ENGINEER, IS A VIOLATION OF TITLE 16, SECTION 16-150 OF NEW YORK STATE LAW. COPYRIGHT INTER-GARMENT & ASSOCIATES ARCHITECTS & ENGINEERS, PC. ALL RIGHTS RESERVED.

Professional Seal

No.	Date	Issue
4	01/13/2022	CONFORMED SET
3	11/01/2021	ISSUED TO BID
2	07/14/2021	CONSTRUCTION DOCS-NYSED
1	12/15/2020	DESIGN DEVELOPMENT

Community Wing Sprinkler Plan

Job No. 2019-1026 Date 11/16/20

Scale AS NOTED Drawn / Checked BGA / BGA

Sheet Number

SP210

NEW COMMUNITY SCHOOL AT THE ST DENIS SITE

YONKERS JOINT SCHOOL CONSTRUCTION BOARD
121 McLean Avenue
Yonkers, NY 10705



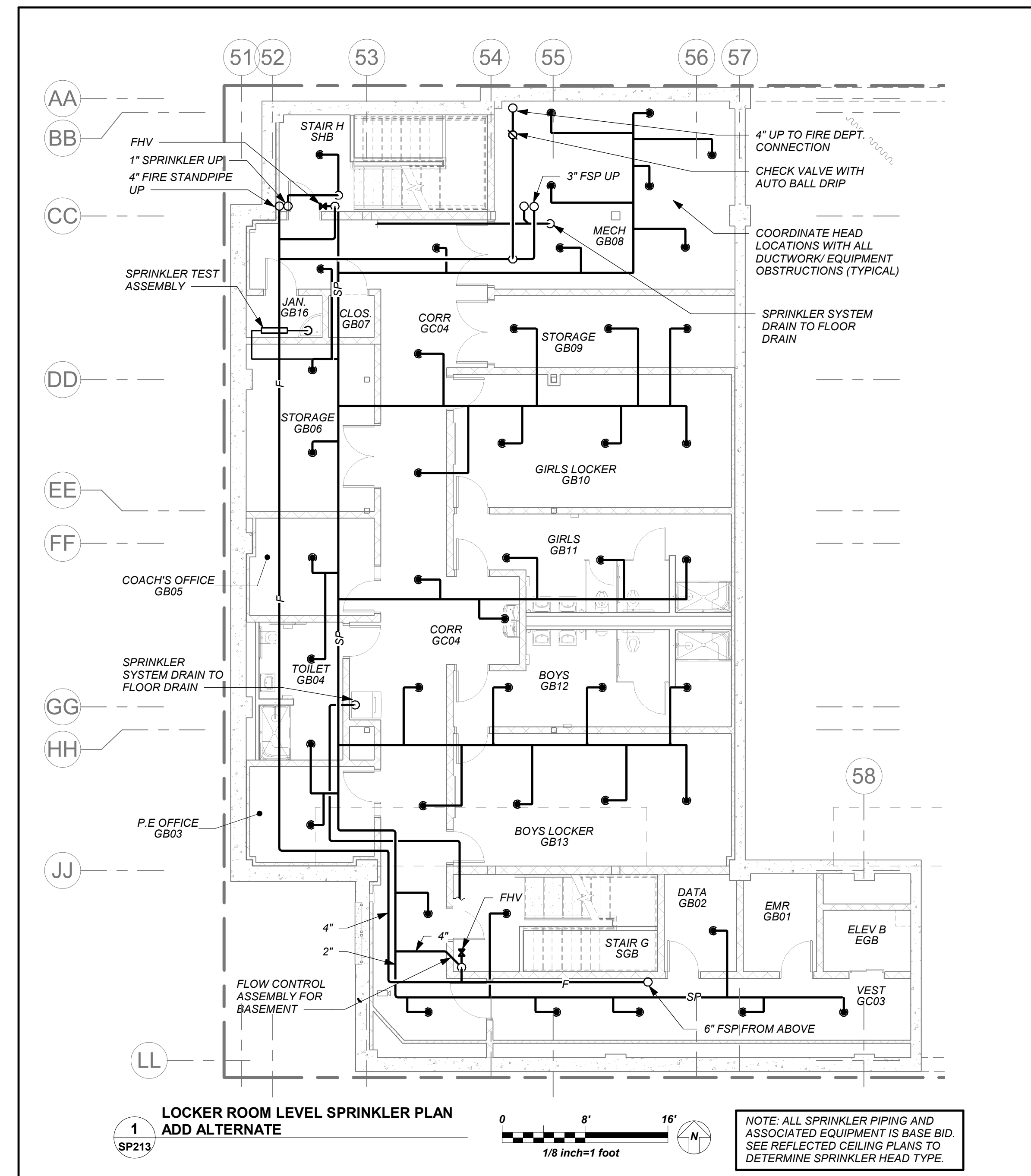
KG+D . ARCHITECTS PC
285 MAIN STREET MOUNT KISCO, NEW YORK, 10549
P-914.666.5900 KGDARCHITECTS.COM

NY SED PROJECT CONTROL NO.
66-23-00-01-0-346-001

CONSTRUCTION DOCUMENTS

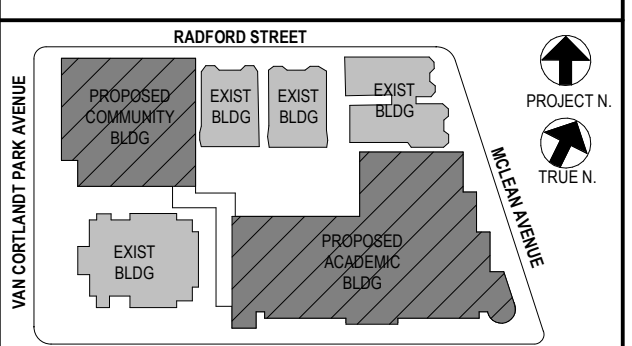


BARILE GALLAGHER & ASSOCIATES
CONSULTING ENGINEERS
99 MARBLE AVE. PLEASANTVILLE, NY 10570
914.326.0099 GENERAL@BGA-ENG.COM WWW.BGA-ENG.COM



1
SP213
LOCKER ROOM LEVEL SPRINKLER PLAN
ADD ALTERNATE

NOTE: ALL SPRINKLER PIPING AND ASSOCIATED EQUIPMENT IS BASE BID. SEE REFLECTED CEILING PLANS TO DETERMINE SPRINKLER HEAD TYPE.



NOTE: ALL LOCAL REGIONAL ARRANGEMENTS ARE PLANS INDICATED OR REPRESENTED BY THIS DRAWING ARE OWNED BY AND ARE THE PROPERTY OF ANKER GARDNER & SHAWSON ARCHITECTS PC HEREIN AND HEREIN CREATED FOR USE ON THIS PROJECT. NONE OF SUCH LOCAL DESIGN ARRANGEMENTS OR PLANS SHALL BE USED BY OR DISCLOSED TO ANY PURPOSE WHATSOEVER WITHOUT THE WRITTEN PERMISSION OF AG&S.

WRITTEN DIMENSIONS ON THIS DRAWING SHALL HAVE PRECEDENCE OVER SCALED DIMENSIONS. CONTRACTOR SHALL VERIFY ALL ACTUAL DIMENSIONS AND CONDITIONS ON THE JOB AND THE ARCHITECT MUST BE NOTIFIED OF ANY VARIATIONS FROM DIMENSIONS AND CONDITIONS SHOWN. SHOP DETAILS MUST BE SUBMITTED TO THIS OFFICE FOR APPROVAL BEFORE PROCEEDING WITH FABRICATION.

ALTERATIONS BY ANY PERSON IN ANY WAY OF ANY ITEM CONTAINED ON THIS DOCUMENT, UNLESS ACTING UNDER THE DIRECTION OF THE LICENSED ARCHITECT WHOSE PROFESSIONAL SEAL IS AFFIXED HERETO, IS A VIOLATION OF TITLE 16, SECT. 261.5 OF NEW YORK STATE LAW. COPYRIGHT ANKER GARDNER & SHAWSON ARCHITECTS & ENGINEERS, PC. ALL RIGHTS RESERVED.

Professional Seal

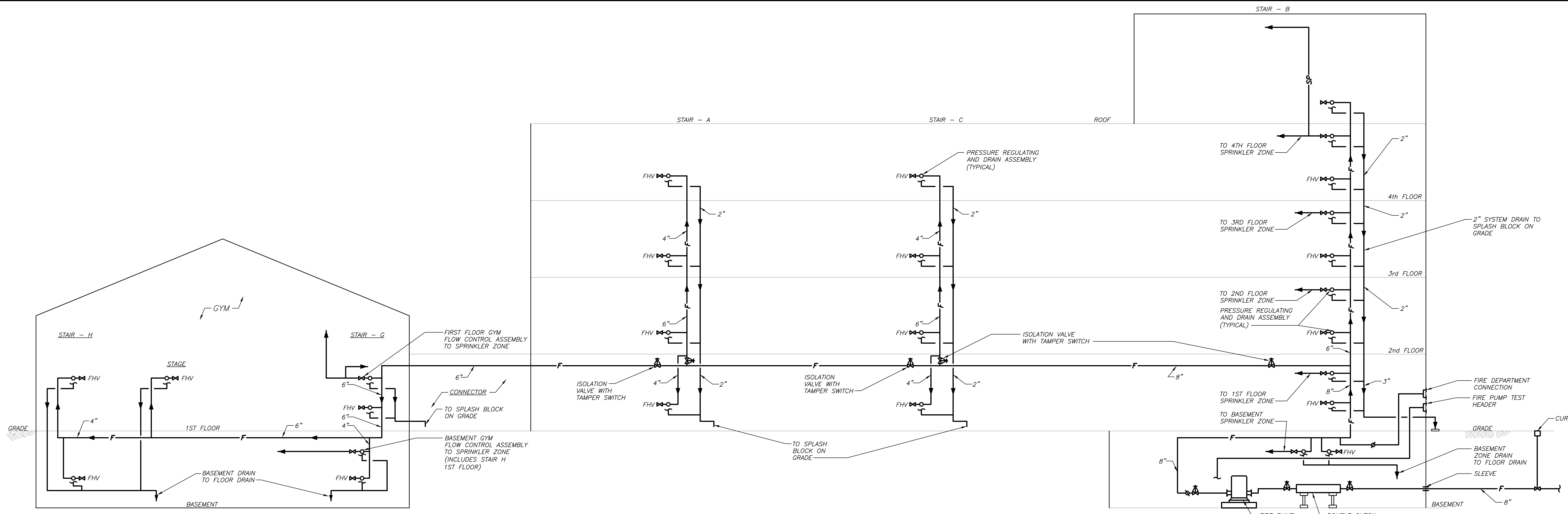
No.	Date	Issue
4	01/13/2022	CONFORMED SET
3	11/01/2021	ISSUED TO BID
2	07/14/2021	CONSTRUCTION DOCS-NYSED
1	12/15/2020	DESIGN DEVELOPMENT

Sheet Title
Community Wing Basement - Add Alt - Gym Basement Fit-Out Plan

Job No.	2019-1026	Date	11/03/21
Scale	AS NOTED	Drawn / Checked	BGA /BGA

Sheet Number
SP213

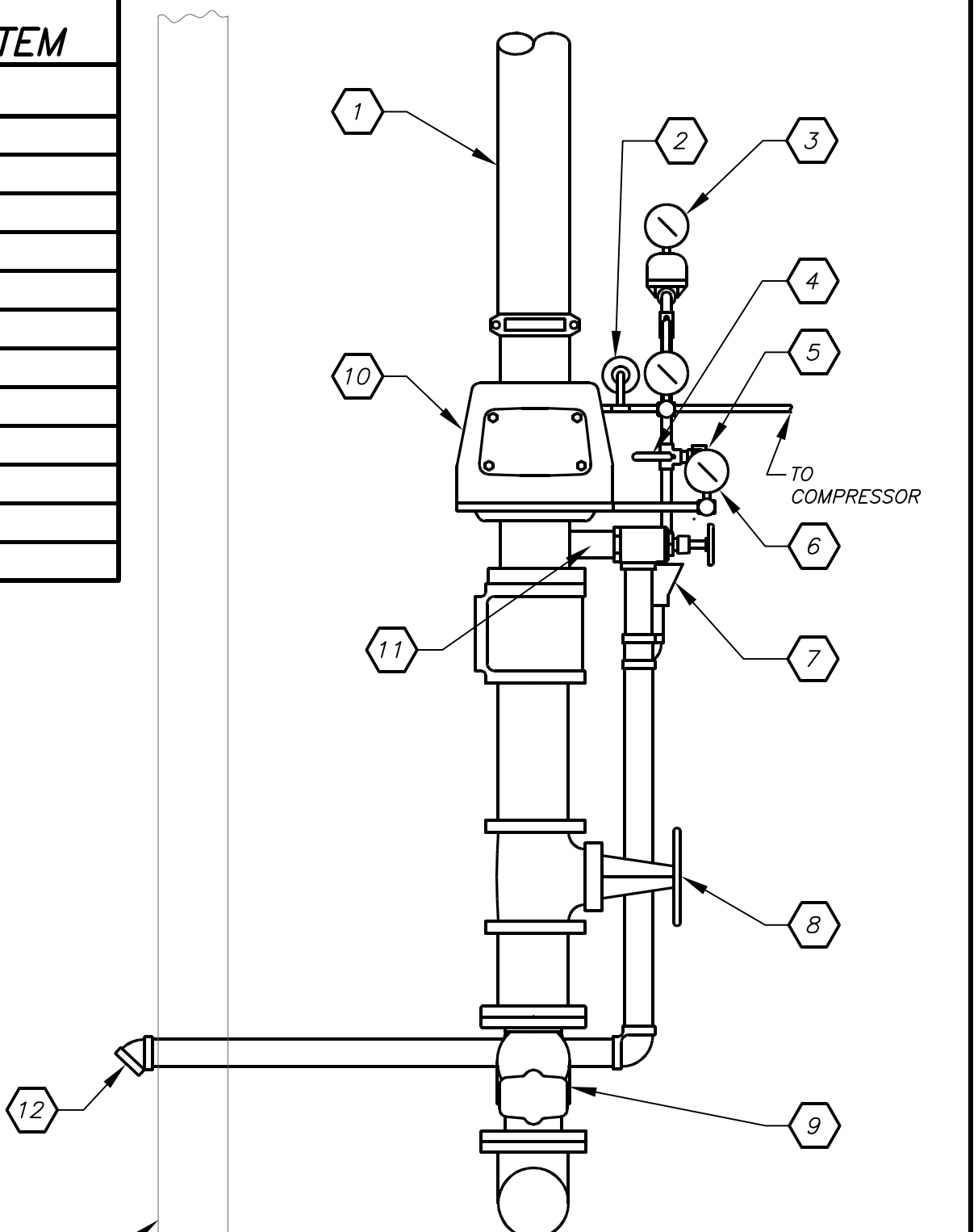
BEFORE FABRICATION THIS CONTRACTOR SHALL VERIFY ALL MEASUREMENTS AND CONDITIONS ON JOB AND COORDINATE HIS WORK WITH THE WORK OF ALL OTHER CONTRACTORS



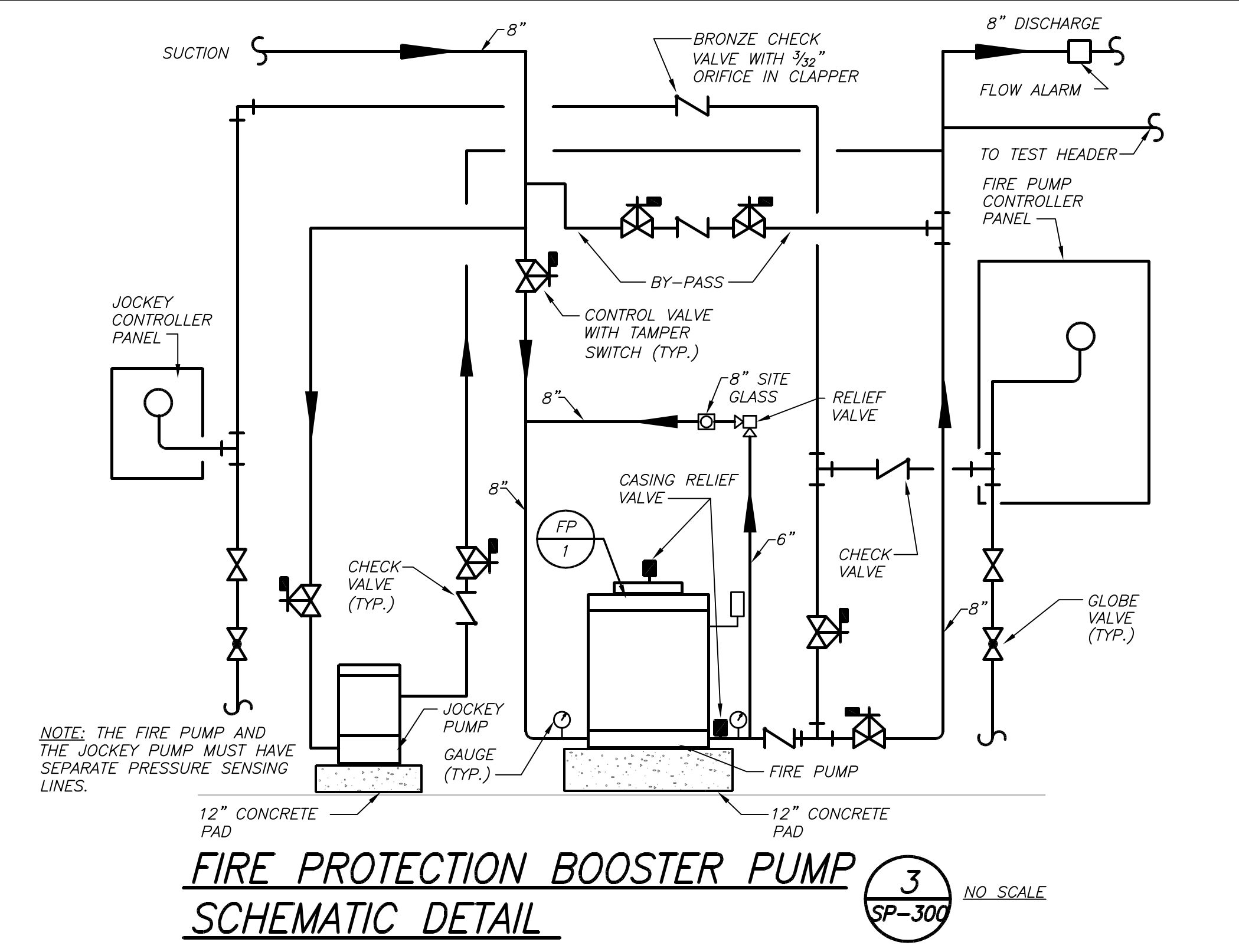
SPRINKLER/FIRE STAND PIPE SCHEMATIC RISER DIAGRAM 1 NO SCALE
 SP-300

LIST OF SPRINKLER RISER APPURTENANCES-DRY SYSTEM

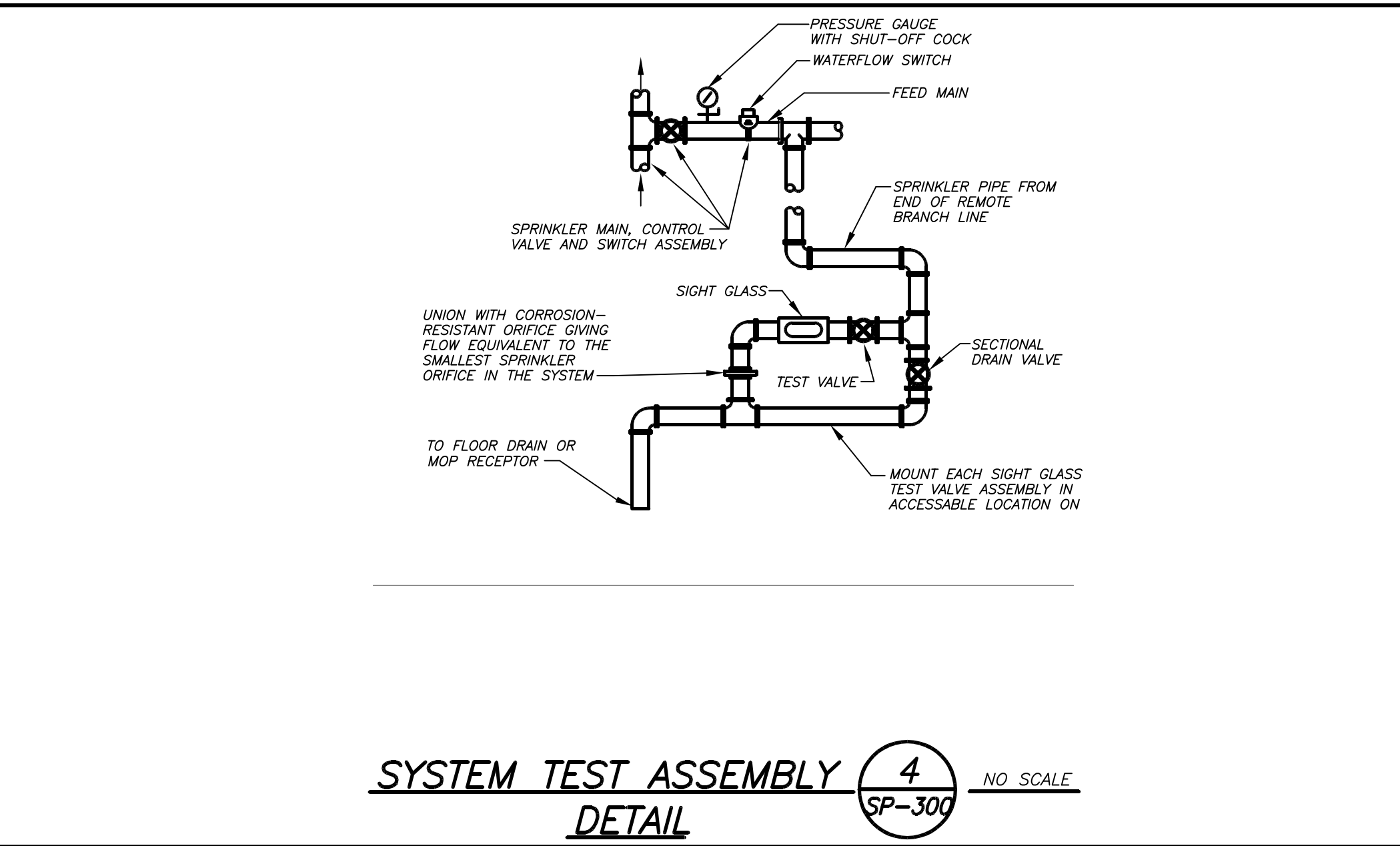
MARK	DESCRIPTION
1	TO SPRINKLER DISTRIBUTION SYSTEM
2	AIR PRESSURE MAINTENANCE DEVICE
3	ACCELERATOR
4	ALARM TEST VALVE
5	PRESSURE SWITCH (HIDDEN)
6	ALARM LINE STRAINER (HIDDEN)
7	DRAIN CAP/FUNNEL
8	G.S. & Y. VALVE W/T'S
9	CHECK VALVE
10	DRY VALVE
11	TEST DRAIN VALVE
12	TEST DRAIN



DRY SPRINKLER RISER DETAIL 5 NOT TO SCALE
 SP-300



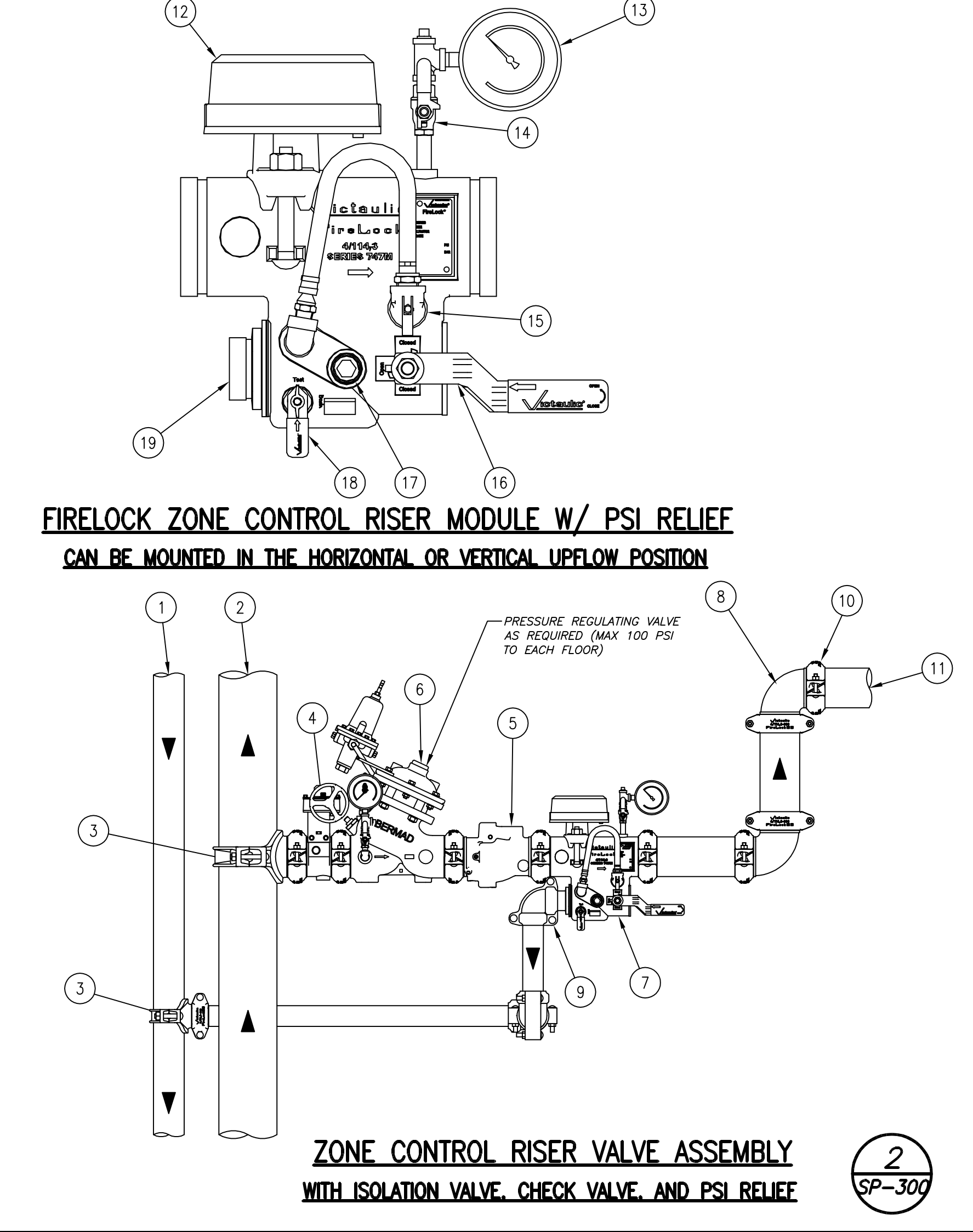
FIRE PROTECTION BOOSTER PUMP SCHEMATIC DETAIL 3 NO SCALE
 SP-300



SYSTEM TEST ASSEMBLY DETAIL 4 NO SCALE
 SP-300

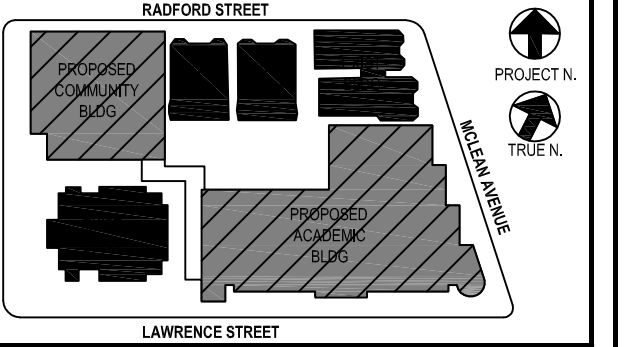
PRODUCT LEGEND

- DRAIN RISER
- RISER
- MIC MECHANICAL TEE STYLE 920M
- VIC FIRELOCK BUTTERFLY VALVE SERIES 705
- VIC FIRELOCK CHECK VALVE SERIES 717
- VICTAULIC SERIES 867 PRESSURE REDUCING VALVE (Bernad 720 UL/4" SHOWN)
- VIC FIRELOCK ZONE CONTROL RISER MODULE SERIES 747MP W/PSI RELIEF VALVE
- VIC FIRELOCK 90 DEG ELBOW No. 001
- VIC IR FIRELOCK 90 DEG ELBOW No. 101
- VIC FIRELOCK EZ RIGID COUPLING STYLE 029N (OR) RIGID COUPLING STYLE 005
- TO SPRINKLER SYSTEM
- UL LISTED FM APPROVED FLOW SWITCH (SYSTEM SENSOR MODEL WFD)
- PRESSURE GAUGE
- ISOLATION VALVE FOR GAUGE
- PRESSURE RELIEF VALVE
- SHUT OFF VALVE (OFFSET HANDLE FOR ACCESS ON BOTH SIDES)
- SHUT OFF VALVE (OFFSET HANDLE FOR ACCESS ON BOTH SIDES)
- SITE GLASS (VISIBLE FROM BOTH SIDES)
- TEST AND DRAIN VALVE (HANDLE ON BOTH SIDES)
- GROOVED DRAIN CONNECTION
- SEE VICTAULIC SUBMITTAL NUMBER 10.96



ZONE CONTROL RISER VALVE ASSEMBLY WITH ISOLATION VALVE, CHECK VALVE, AND PSI RELIEF 2 NO SCALE
 SP-300

BEFORE FABRICATION THIS CONTRACTOR SHALL VERIFY ALL MEASUREMENTS AND CONDITIONS ON JOB AND COORDINATE HIS WORK WITH THE WORK OF ALL OTHER CONTRACTORS



NOTE: ALL DEAS, ORIGINAL ARRANGEMENTS AND PLANS INDICATED OR REPRESENTED BY THIS DRAWING ARE OWNED BY AND ARE THE PROPERTY OF BARILE GALLAGHER & ASSOCIATES, INC. (BG&A). NO PART OF THIS DRAWING IS TO BE REPRODUCED OR TRANSMITTED IN ANY FORM OR BY ANY MEANS, ELECTRONIC OR MECHANICAL, INCLUDING PHOTOCOPYING, RECORDING, OR BY ANY INFORMATION STORAGE AND RETRIEVAL SYSTEM, WITHOUT THE WRITTEN PERMISSION OF BG&A.

WRITTEN COMMENTS ON THIS DRAWING SHALL HAVE PRECEDENCE OVER SCALE DIMENSIONS. CONTRACTOR SHALL VERIFY ALL ACTUAL DIMENSIONS AND CONDITIONS ON THE JOB AND THE ARCHITECT MUST BE NOTICED OF ANY VARIATIONS FROM DIMENSIONS AND CONDITIONS SHOWN. SHOP DETAILS MUST BE SUBMITTED TO THIS OFFICE FOR APPROVAL BEFORE PROCEEDING WITH FABRICATION.

ALTERATIONS BY ANY PERSON IN ANY WAY OF ANY ITEM CONTAINED ON THIS DOCUMENT UNLESS ACTING UNDER THE DIRECTION OF THE LICENSED ARCHITECT WHOSE PROFESSIONAL SEAL IS APPROVED HEREIN IN A VIOLATION OF TITLE 16, SECTION 2603 OF NEW YORK STATE LAW.

COPYRIGHT 2022 BY BARILE GALLAGHER & ASSOCIATES, ARCHITECTS & ENGINEERS, PC. ALL RIGHTS RESERVED.

Professional Seal

--	--

5	01/13/2022	CONFORMED SET
4	12/10/2021	BID ADDENDUM #4
3	11/01/2021	ISSUED TO BID
2	07/14/2021	CONSTRUCTION DOCS-NYSID
1	12/15/2020	DESIGN DEVELOPMENT

No. 1 Date Issue

Sheet Title

Job No.	2019-1026	Date	11/18/20
Scale	AS NOTED	Drawn / Checked	BGA/BGA
Sheet Number	SP300		