

**NEW COMMUNITY SCHOOL 35 AT ST DENIS SITE**

YONKERS JOINT SCHOOL CONSTRUCTION BOARD

121 McLean Avenue,  
Yonkers, NY 10705



**KG+D . ARCHITECTS PC**  
285 MAIN STREET MOUNT KISCO, NEW YORK, 10589  
P:914.666.5900 KGDARCHITECTS.COM



**The Di Salvo Engineering Group**  
Structural Engineers  
83 Woster Heights Road | Suite 200  
Lisle Farm Corporate Park | Danbury, CT 06810  
(203) 490-1140 | www.dsleg.com

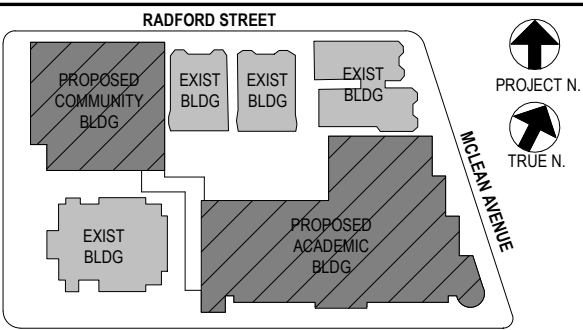
NY SED PROJECT CONTROL NO.  
**66-23-00-01-0-346-001**

**CONSTRUCTION DOCUMENTS**

**OWNERSHIP, USE AND ALTERATION OF DOCUMENTS:**

The Client acknowledges that the documents, drawings, specifications including electronic media files are instruments of the Di Salvo Engineering Group's services and shall remain the property of The Di Salvo Engineering Group. The Client or any person or entity that acquires or obtains the drawings and specifications from or through The Client shall not use them on any other project, shall not modify, alter or change the drawings and specifications without written authorization from The Di Salvo Engineering Group. Furthermore, The Client agrees to the fullest extent permitted by law to indemnify and hold harmless The Di Salvo Engineering Group, its officers, directors and employees from any and all claims, suits, liability, demands or costs, including attorney fees arising out of or resulting therefrom.

**SCOPE OF WORK RELATED TO SECTIONS AND DETAILS:**  
Work shown as "Typical Details" apply throughout the project as required.  
Work shown as "Sections" shall be considered to apply for the same and similar conditions in the building.



NOTE: ALL IDEAS, DESIGN ARRANGEMENTS AND PLAN INDICATED OR REPRESENTED BY THIS DRAWING ARE OWNED BY AND ARE THE PROPERTY OF KINGS CEMENT & CONCRETE ARCHITECTS PC (K&C). NO PART OF THIS DRAWING OR ANY INFORMATION CONTAINED HEREIN SHALL BE REPRODUCED OR TRANSMITTED IN ANY FORM OR BY ANY MEANS, ELECTRONIC OR MECHANICAL, INCLUDING PHOTOCOPYING, RECORDING, OR BY ANY INFORMATION STORAGE AND RETRIEVAL SYSTEM, WITHOUT THE WRITTEN PERMISSION OF K&C.

WRITTEN DIMENSIONS ON THIS DRAWING SHALL HAVE PRECEDENCE OVER SCALE DIMENSIONS. CONTRACTOR SHALL VERIFY ALL ACTUAL DIMENSIONS AND CONDITIONS ON THE JOB AND THE ARCHITECT MUST BE NOTIFIED OF ANY VARIATIONS FROM DIMENSIONS AND CONDITIONS SHOWN. SHOP DETAILS MUST BE SUBMITTED TO THIS OFFICE FOR APPROVAL BEFORE PROCEEDING WITH FABRICATION.

ALTERATIONS BY ANY PERSON IN ANY WAY OF ANY ITEM CONTAINED ON THIS DOCUMENT, UNLESS ACTING UNDER THE DIRECTION OF THE LICENSED ARCHITECT, ENGINEER, PROFESSIONAL DESIGNER, OR ARCHITECT, SHALL BE A VIOLATION OF TITLE 16, SECTION 8-3.0 OF THE NEW YORK STATE LAW. COPYRIGHT © 2020, KINGS CEMENT & CONCRETE ARCHITECTS & ENGINEERS, PC. ALL RIGHTS RESERVED.

Professional Seal

4	11/01/21	ISSUE FOR BID
3	07/14/21	CONSTRUCTION DOCS - NYSED
2	12/15/20	DESIGN DEVELOPMENT
1	08/31/20	SCHEMATIC DESIGN

No. 1 Date Issue

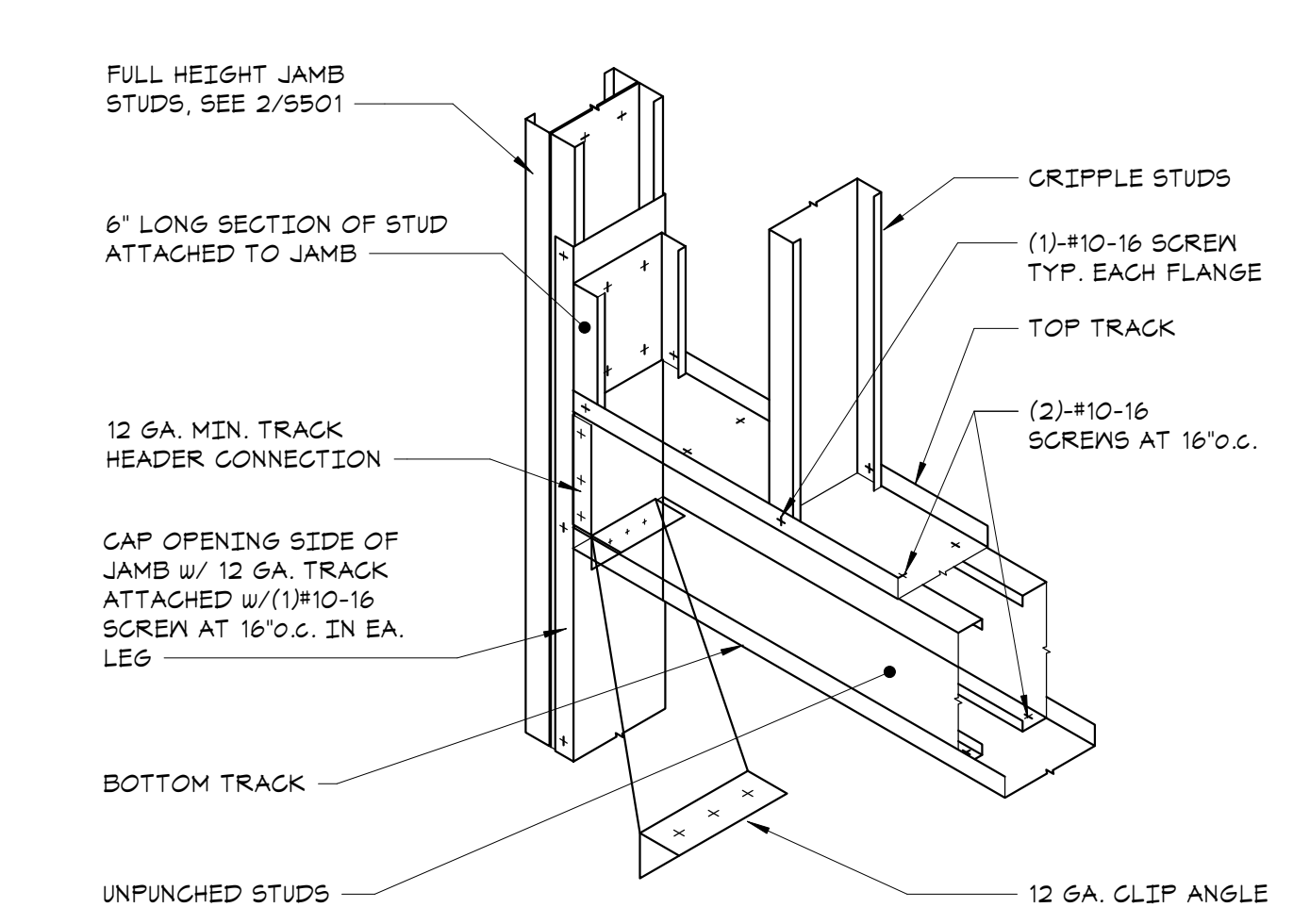
Sheet Title

**COLD FORMED FRAMING SCHEDULES AND TYPICAL DETAILS**

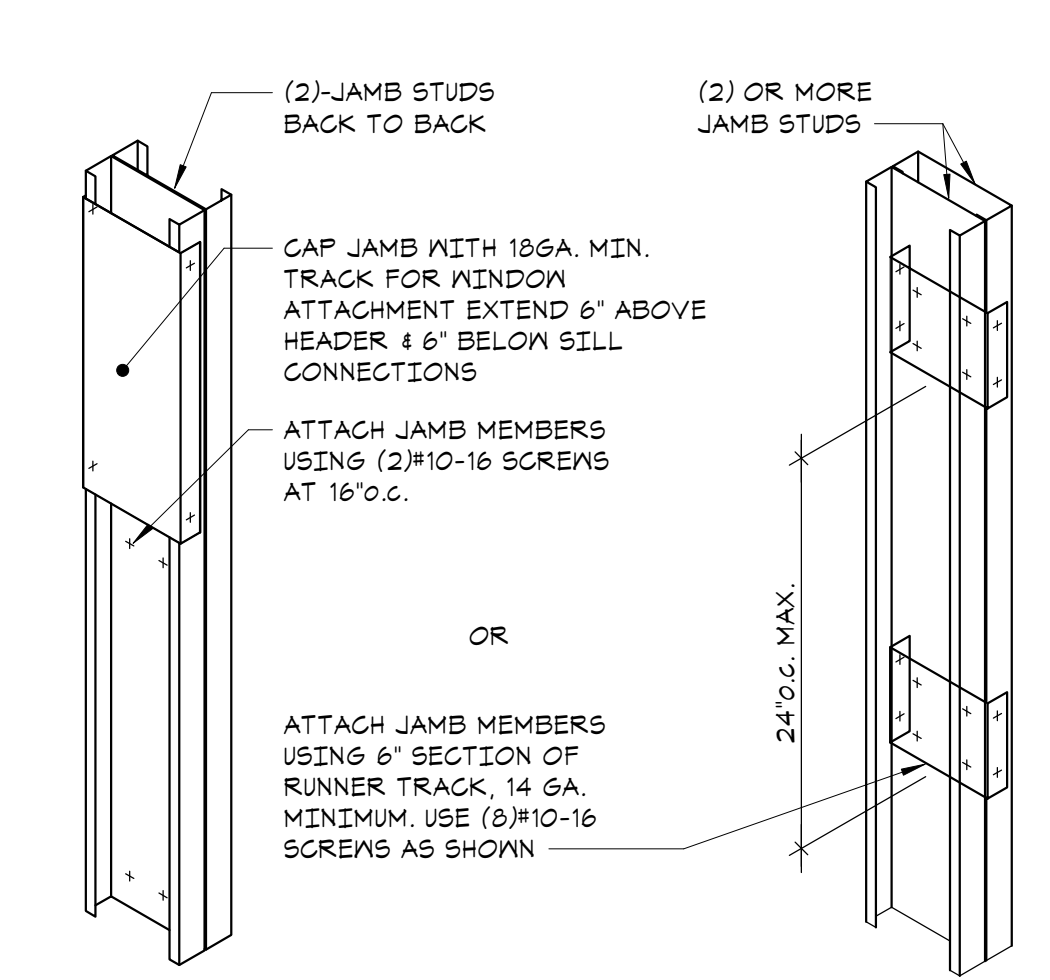
Job No.	20142.00	Date	10/30/2020
Scale	AS NOTED	Eng'n'r / Checked	TM / EM

Sheet Number

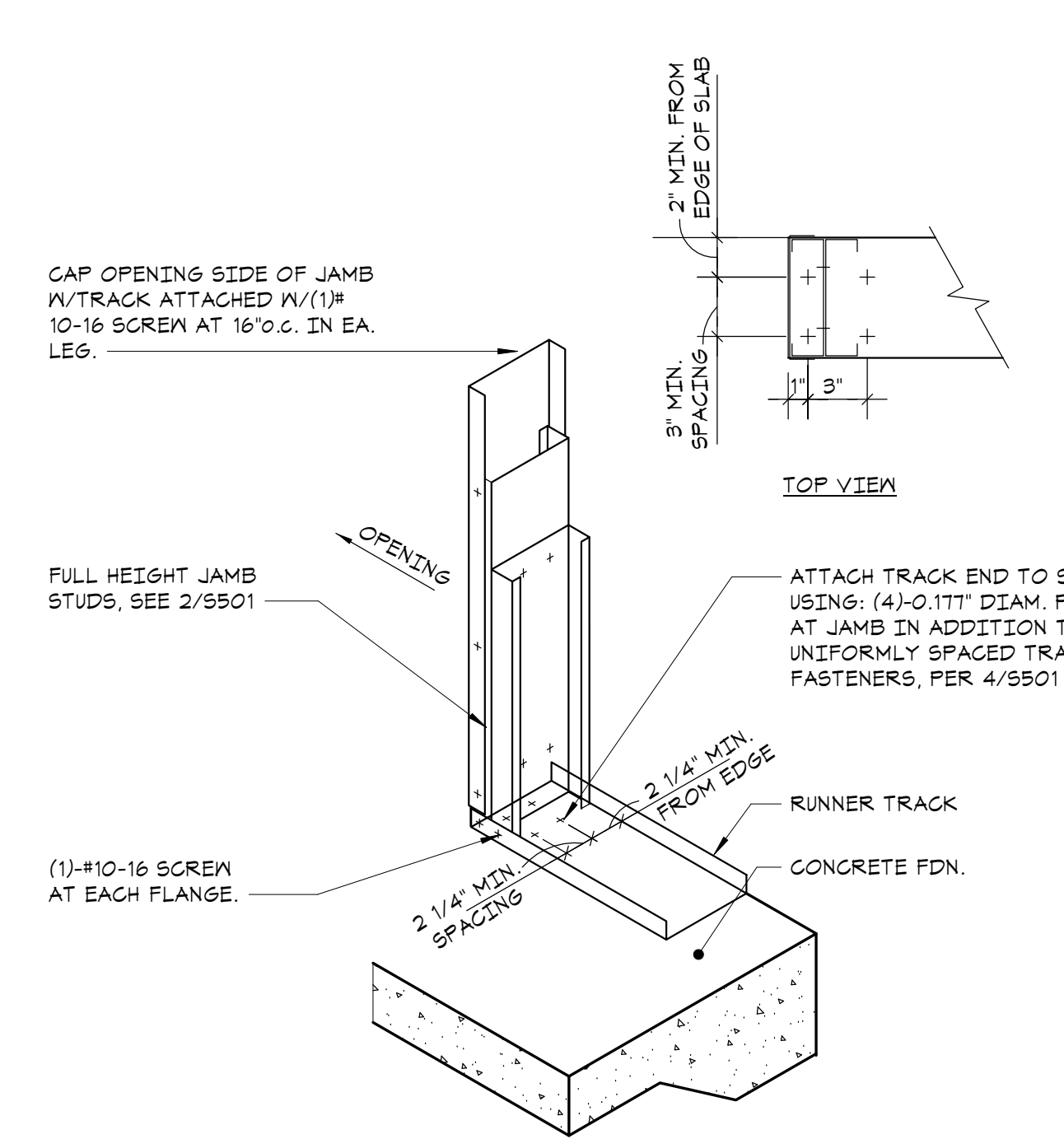
**S501**



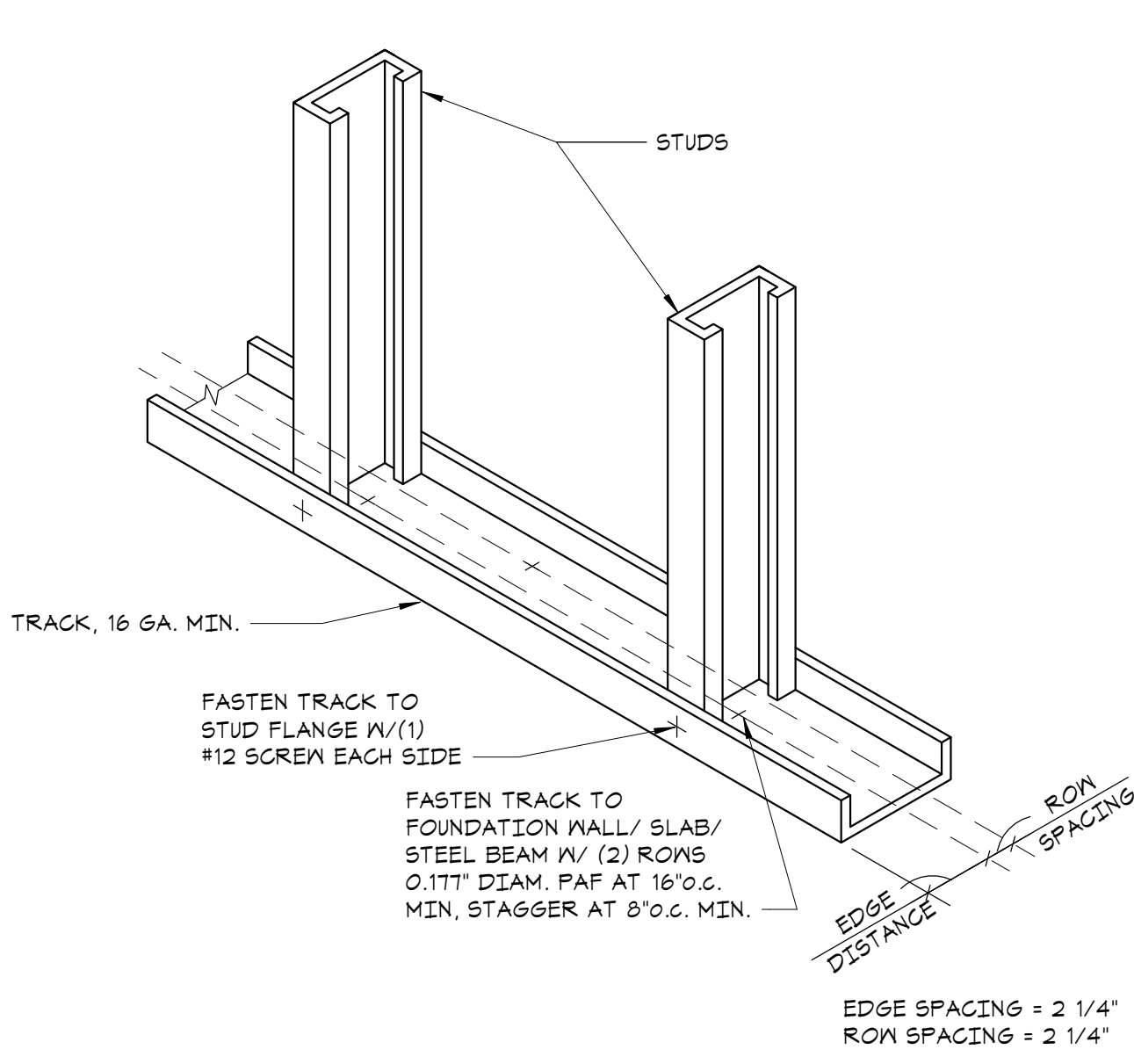
**1 TYPICAL BOXED HEADER DETAIL**  
NO SCALE



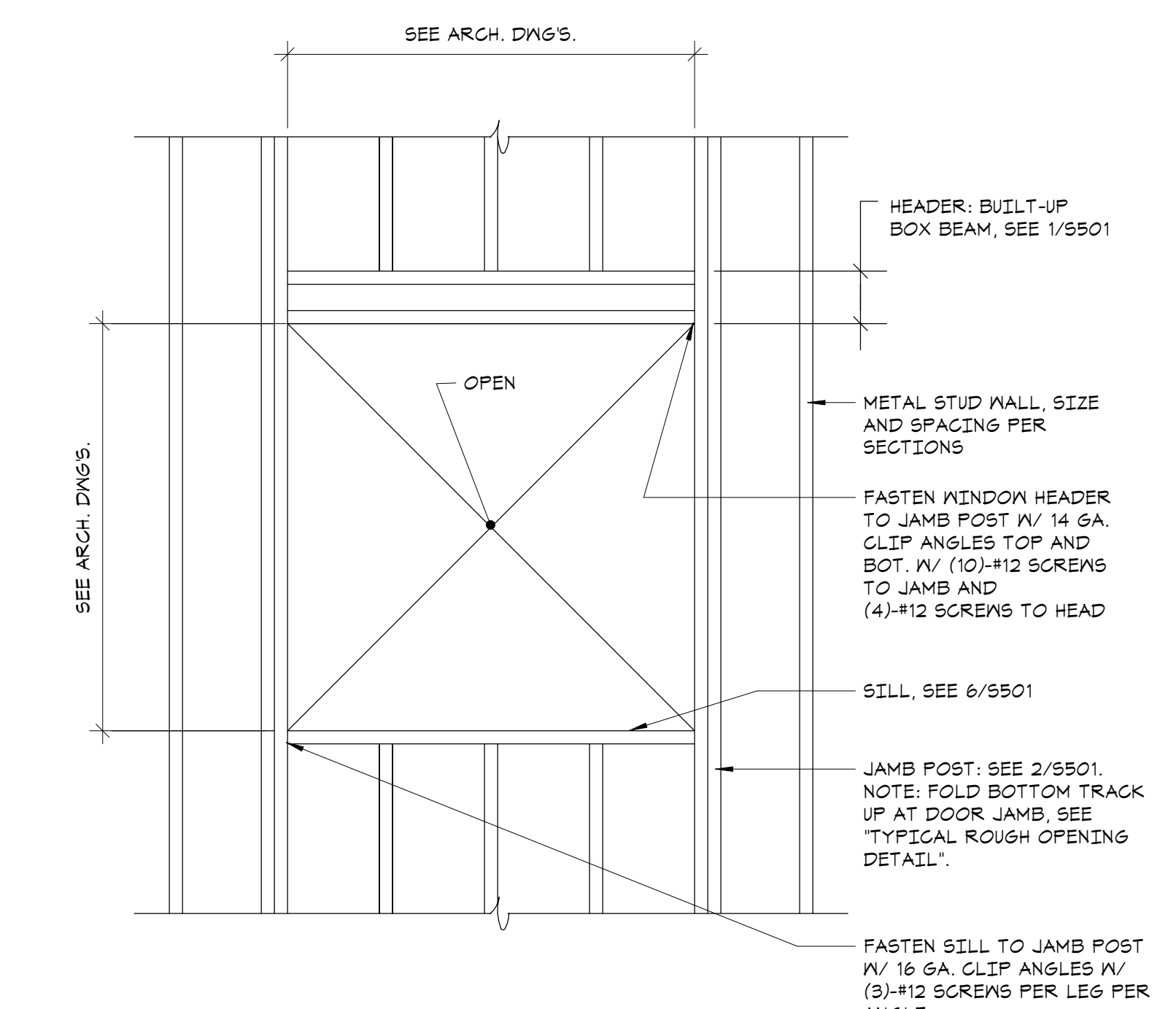
**2 TYPICAL BUILT-UP JAMB DETAIL**  
NO SCALE



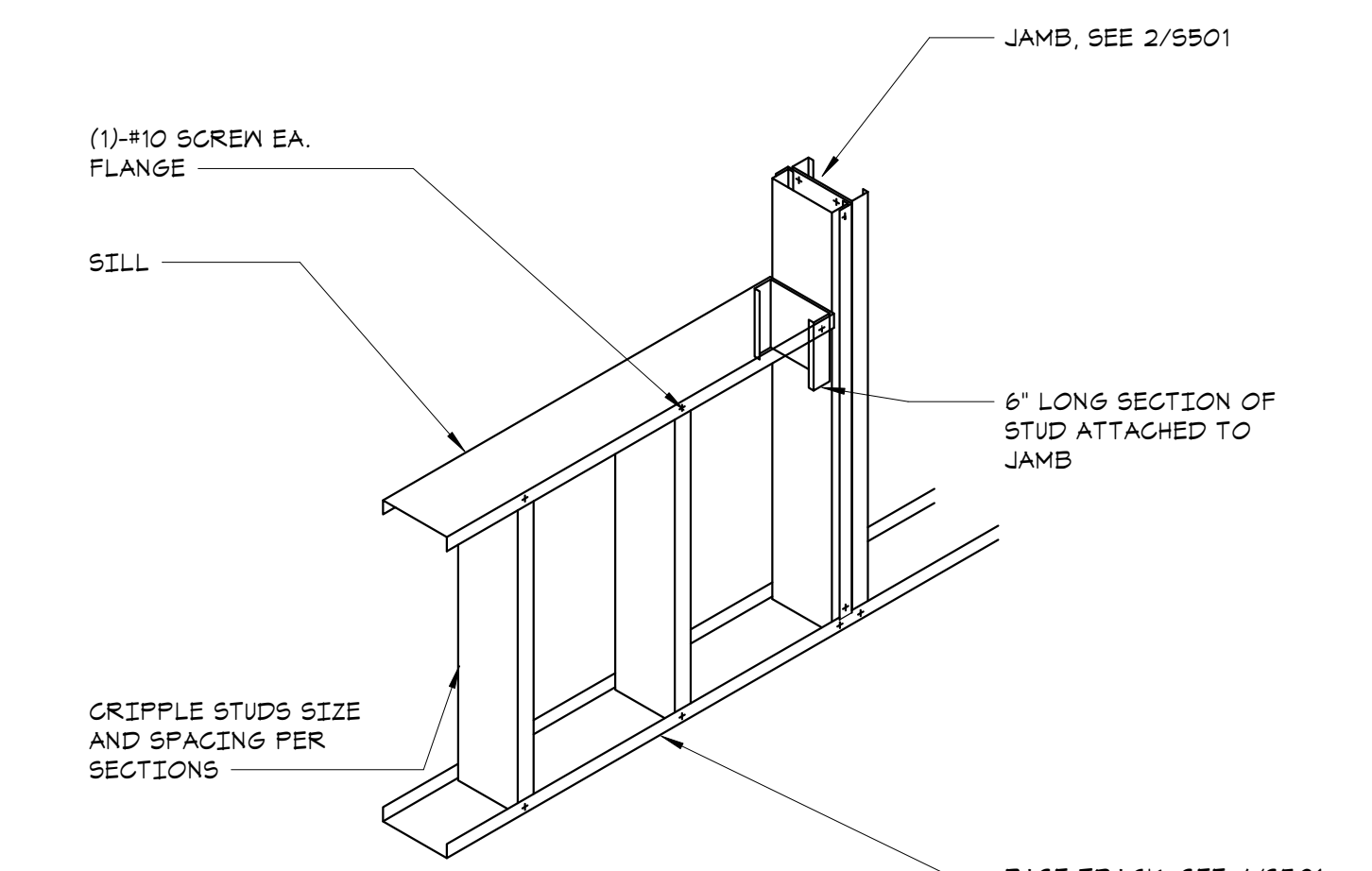
**3 TYPICAL JAMB ANCHORAGE DETAIL**  
NO SCALE



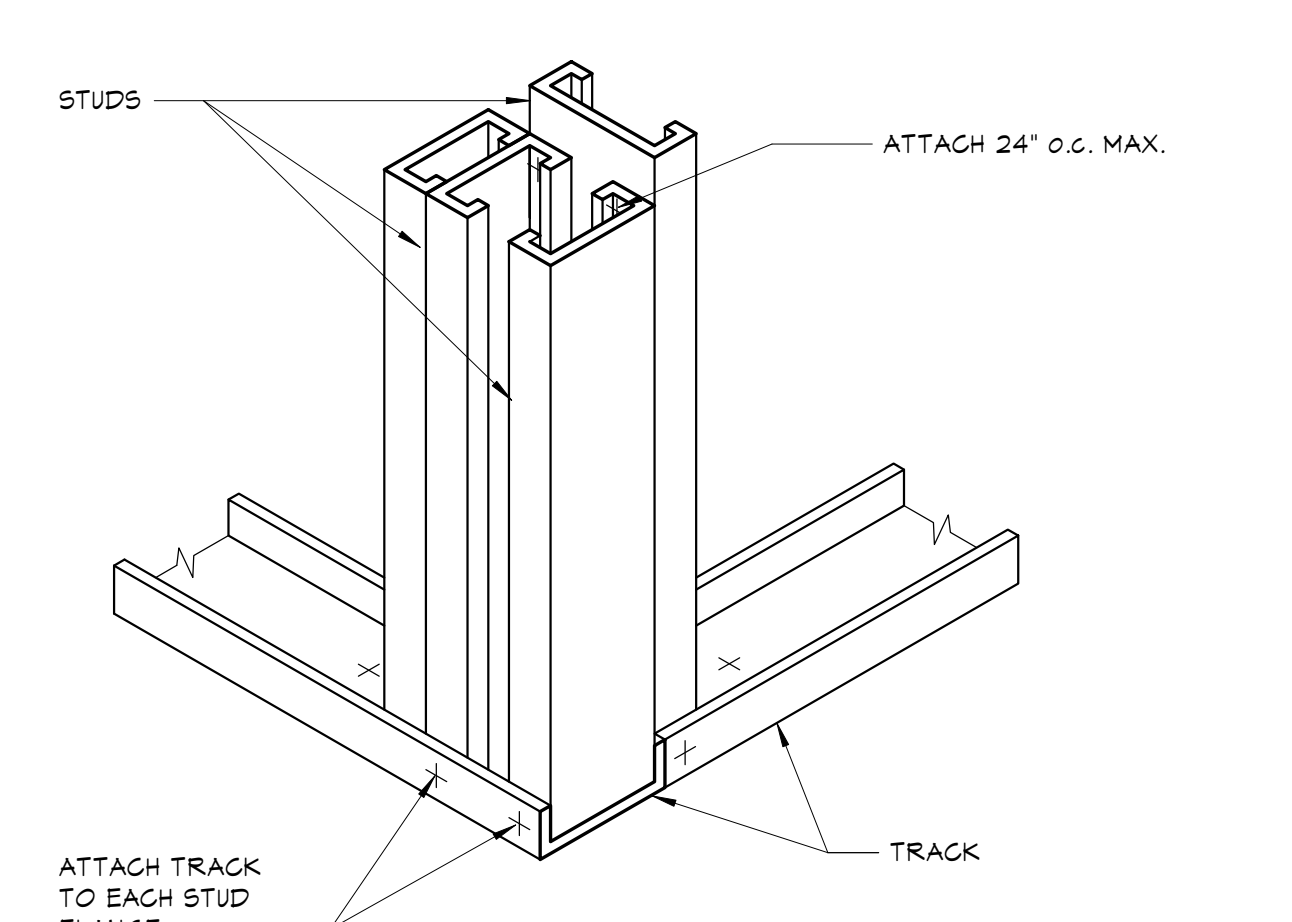
**4 TYPICAL COLD FORMED STUD WALL DETAIL**  
NO SCALE



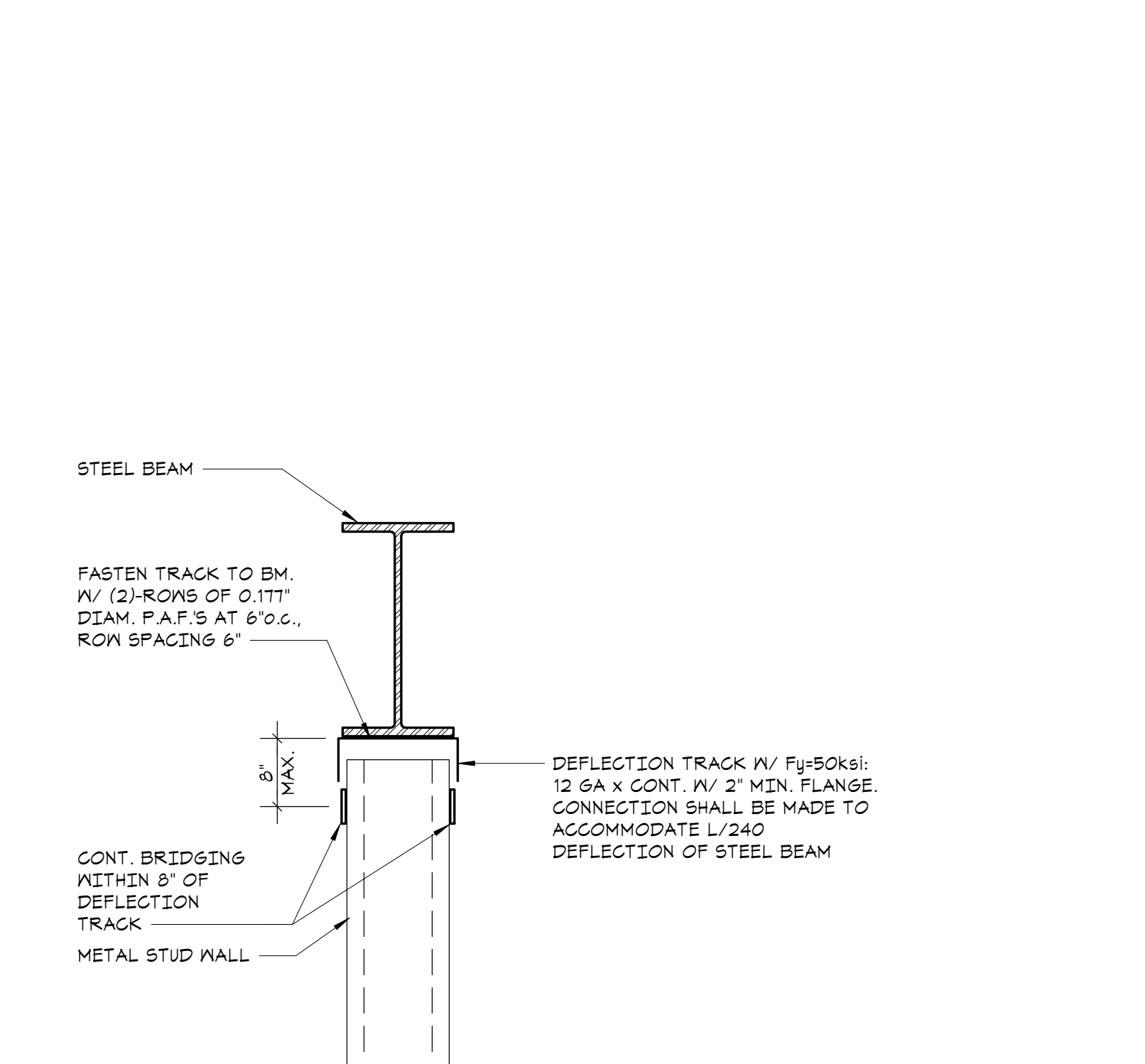
**5 TYPICAL STUD WALL OPENING**  
NO SCALE



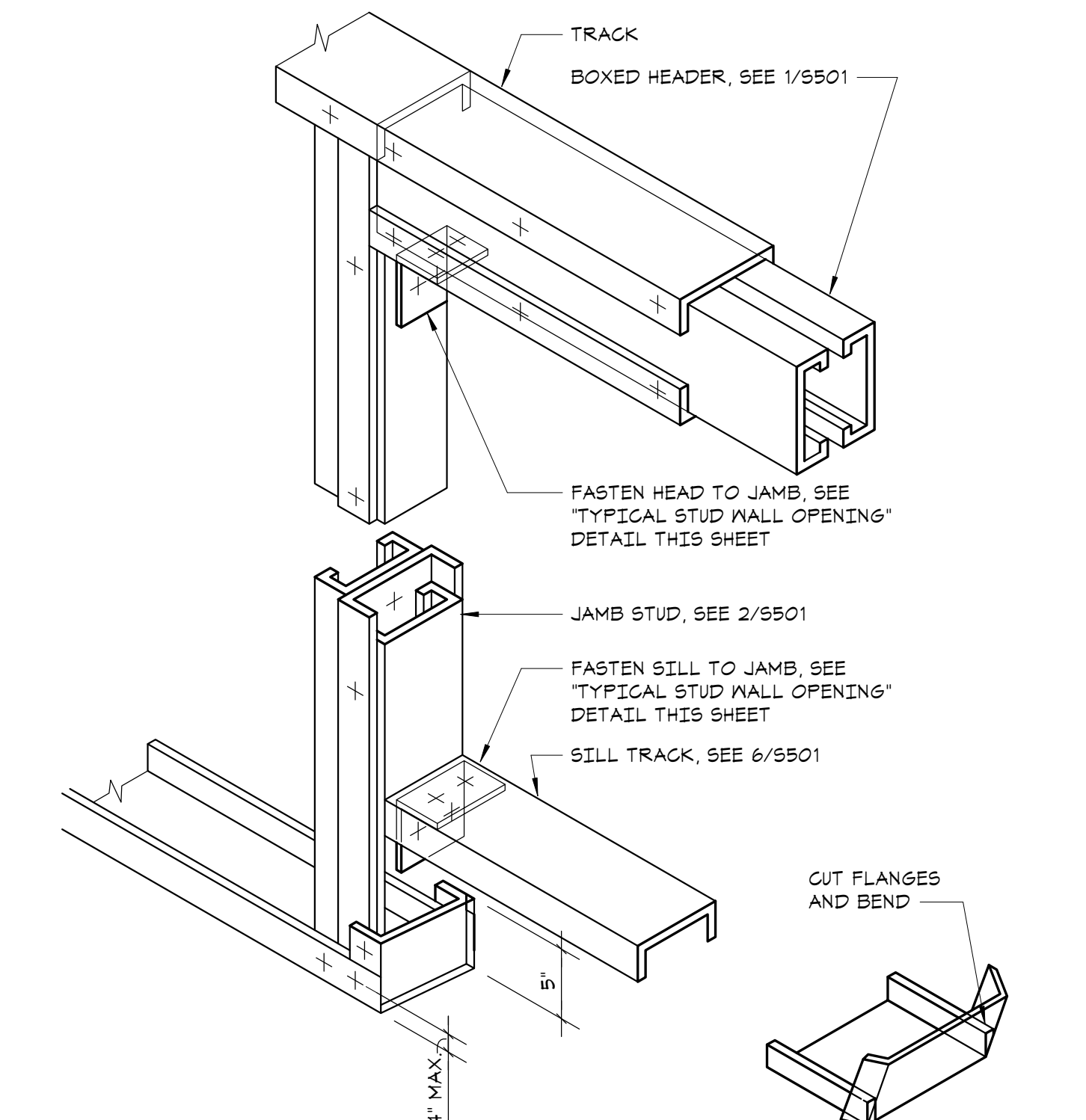
**6 TYPICAL SILL DETAIL**  
NO SCALE



**7 TYPICAL STUD WALL CORNER DETAIL**  
NO SCALE



**8 TYPICAL DEFLECTION TRACK DETAIL**  
NO SCALE



**9 TYPICAL ROUGH OPENING DETAIL**  
NO SCALE

COLD FORMED METAL FRAMING SCHEDULE			
TYPICAL FRAMING			
EXTERIOR 4" WALLS	400S162-54 AT 16" O.C. DOUBLE 400S162-54 AT 16" O.C. WITHIN 10'-0" OF ALL BUILDING CORNERS		
EXTERIOR 6" WALLS*	600S162-54 AT 16" O.C. DOUBLE 600S162-54 AT 16" O.C. WITHIN 10'-0" OF ALL BUILDING CORNERS		
*IN SOME AREAS, THE WALL THICKNESS IS INCREASED FOR ARCHITECTURAL PURPOSES. 6" STUDS ARE USED. REFER TO ARCH. DWGS FOR FULL EXTENT			
OPENINGS (AT 4 1/8" WALLS, SUBSTITUTE 4 1/8" MEMBER FOR 6" MEMBERS)			
R.O. WIDTH	HEADER	SILL	JAMB
3'-6" OR LESS	(2)-600T125-54 + (1)-600S162-54	600T125-54	(2)-600S162-54
3'-6" TO 5'-0"	(2)-600T125-54 + (2)-600S162-54	(2)-600T125-54 + (1)-600S162-54	(2)-600S162-54
5'-0" TO 8'-0"	(2)-600T125-54 + (3)-600S162-54	(2)-600T125-54 + (2)-600S162-54	(3)-600S162-54
8'-0" TO 12'-0"	(2)-600T125-54 + (3)-600S162-54	(2)-600T125-54 + (2)-600S162-54	(3)-600S200-54

- SHAPE DESIGNATION BASED ON 'INDUSTRY STANDARD NOMENCLATURE' (REFER TO SSMA.COM)
- ALL BUILT-UP MEMBERS TO BE FASTENED TOGETHER WITH #12 SCREWS AT 12" O.C.
- ALL BUILT-UP MEMBERS TO BE FASTENED TOGETHER WITH #12 SCREWS AT 12" O.C.
- ALL MEMBERS ARE TO BE CONTINUOUS. TRACK AND STUDS SHALL NOT BE SPLICED.

**10 GOLD-FORMED FRAMING SCHEDULE**  
NO SCALE