

NEW COMMUNITY SCHOOL 35 AT ST DENIS SITE

YONKERS JOINT SCHOOL CONSTRUCTION BOARD

121 McLean Avenue,
Yonkers, NY 10705



KG+D . ARCHITECTS PC
285 MAIN STREET MOUNT KISCO, NEW YORK, 10549
P:914.668.5900 KGDARCHITECTS.COM



83 Wooster Heights Road | Suite 200
Lisle Farm Corporate Park | Danbury, CT 06810
(203) 490-1140 | www.dseng.com

NY SED PROJECT CONTROL NO.
66-23-00-01-0-346-001

CONSTRUCTION DOCUMENTS

OWNERSHIP, USE AND ALTERATION OF DOCUMENTS:

The Client acknowledges that the documents, drawings, specifications including electronic files are instruments of the Di Salvo Engineering Group's services and shall remain the property of the Di Salvo Engineering Group. The Client or any person or entity that acquires or obtains the drawings and specifications from or through the Client shall not use them on any other project, shall not modify, alter or change the drawings and specifications without written authorization from the Di Salvo Engineering Group. Furthermore, the Client agrees to the fullest extent permitted by law to indemnify and hold harmless the Di Salvo Engineering Group, its officers, directors and employees from any and all claims, suits, liability, demands or costs, including attorney fees arising out of or resulting therefrom.

SCOPE OF WORK RELATED TO SECTIONS AND DETAILS:

Work shown as "Typical Details" apply throughout the project as required. Work shown as "Sections" shall be considered to apply for the same and similar conditions in the building.

PROFESSIONAL SEAL

Professional Seal

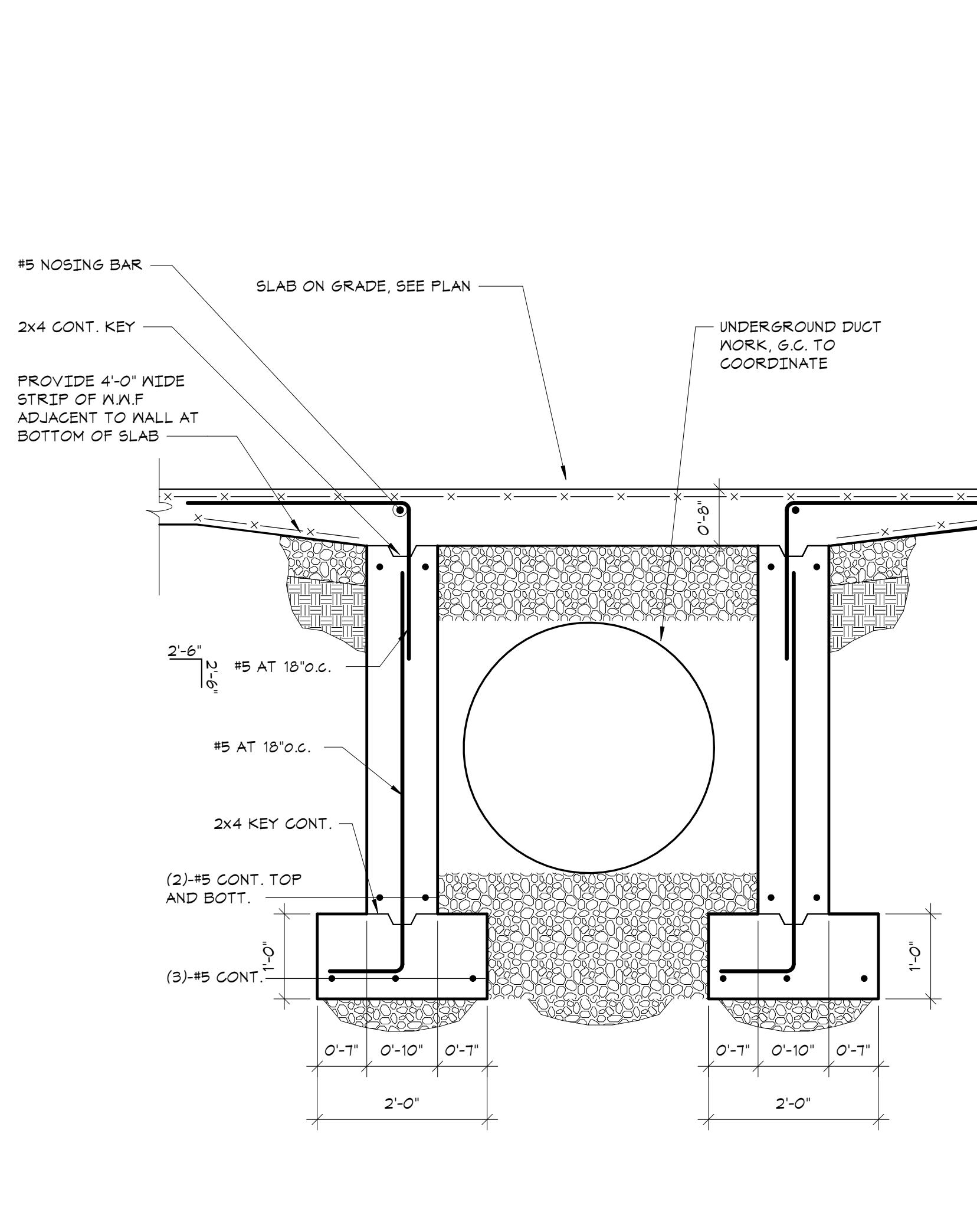
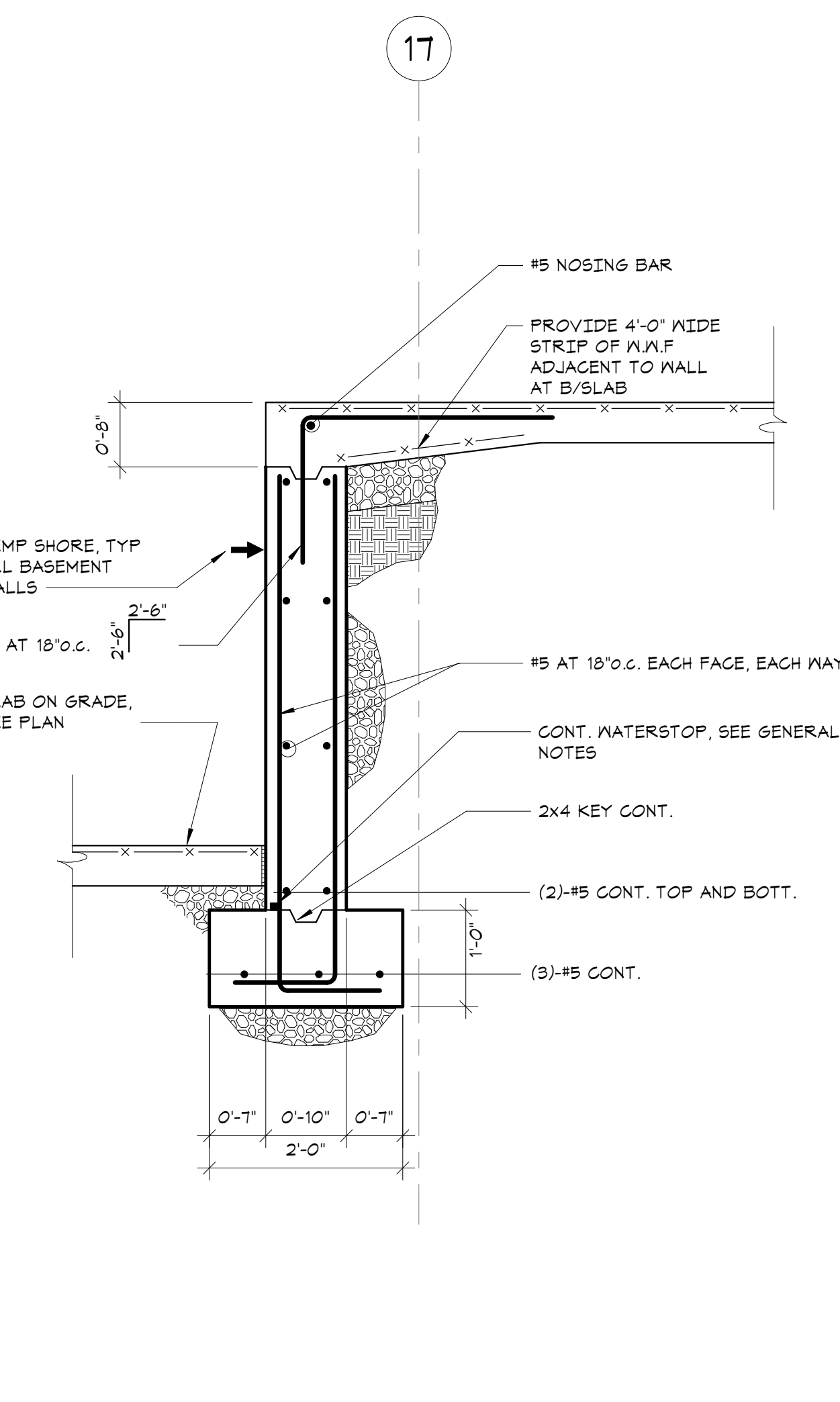
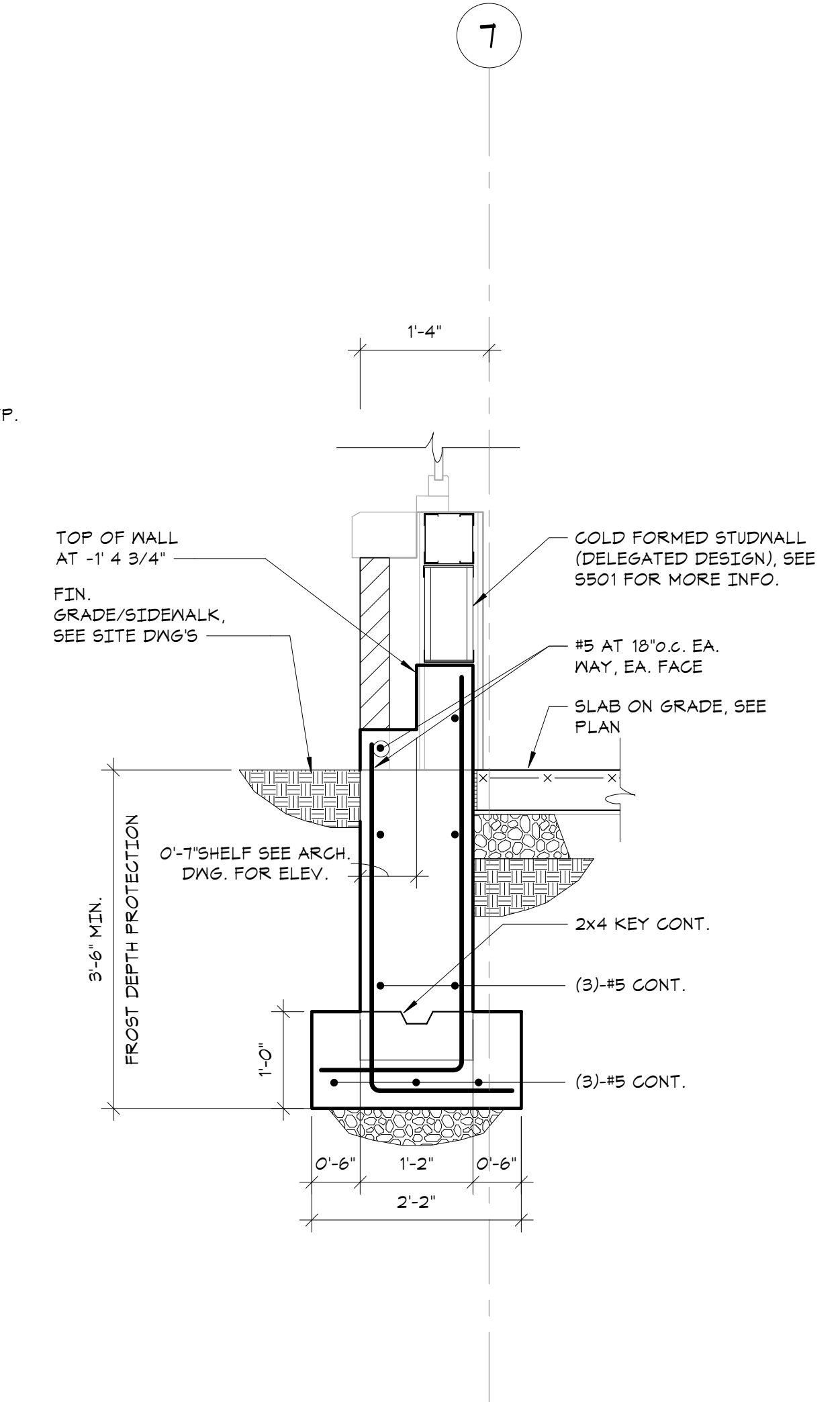
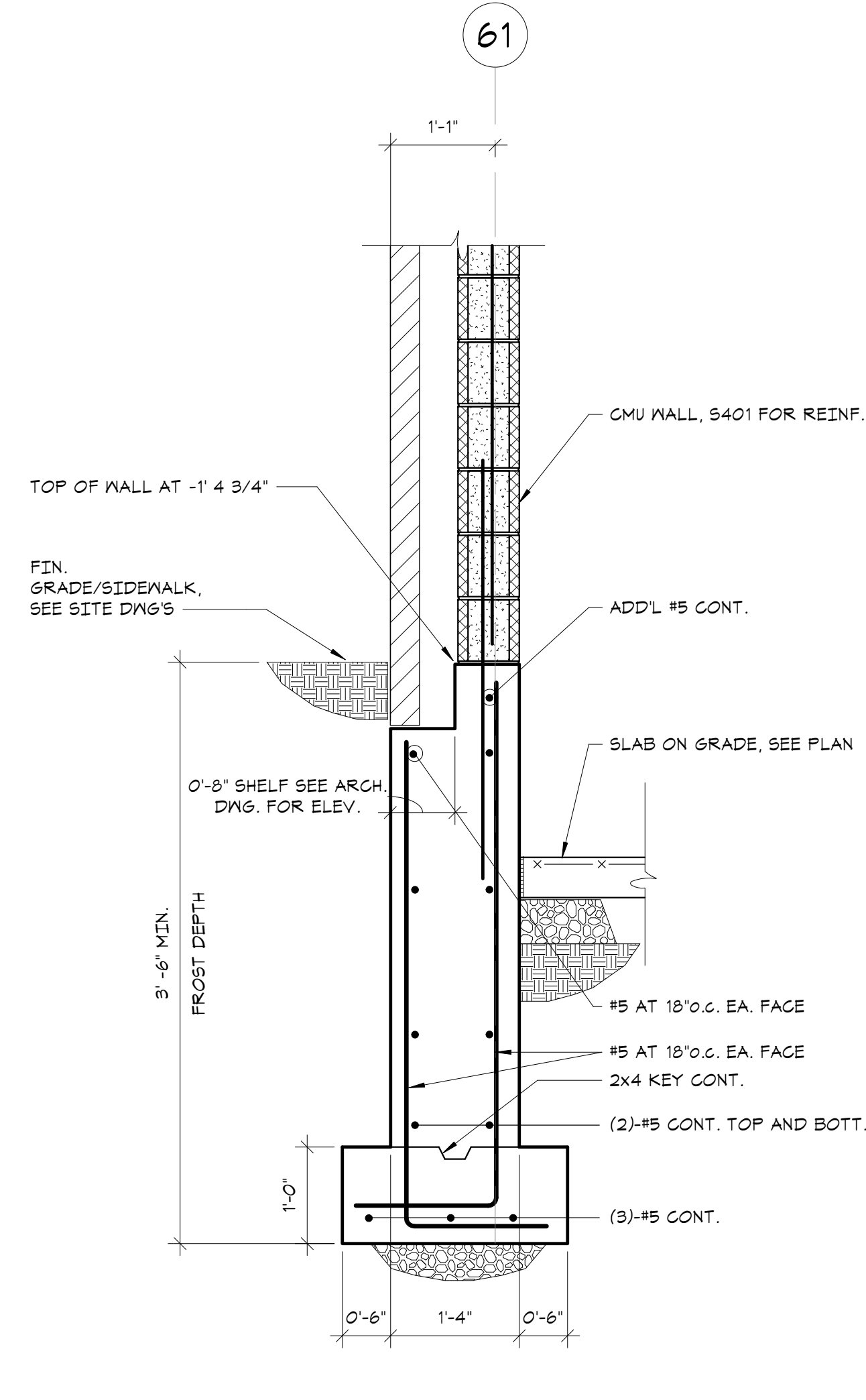
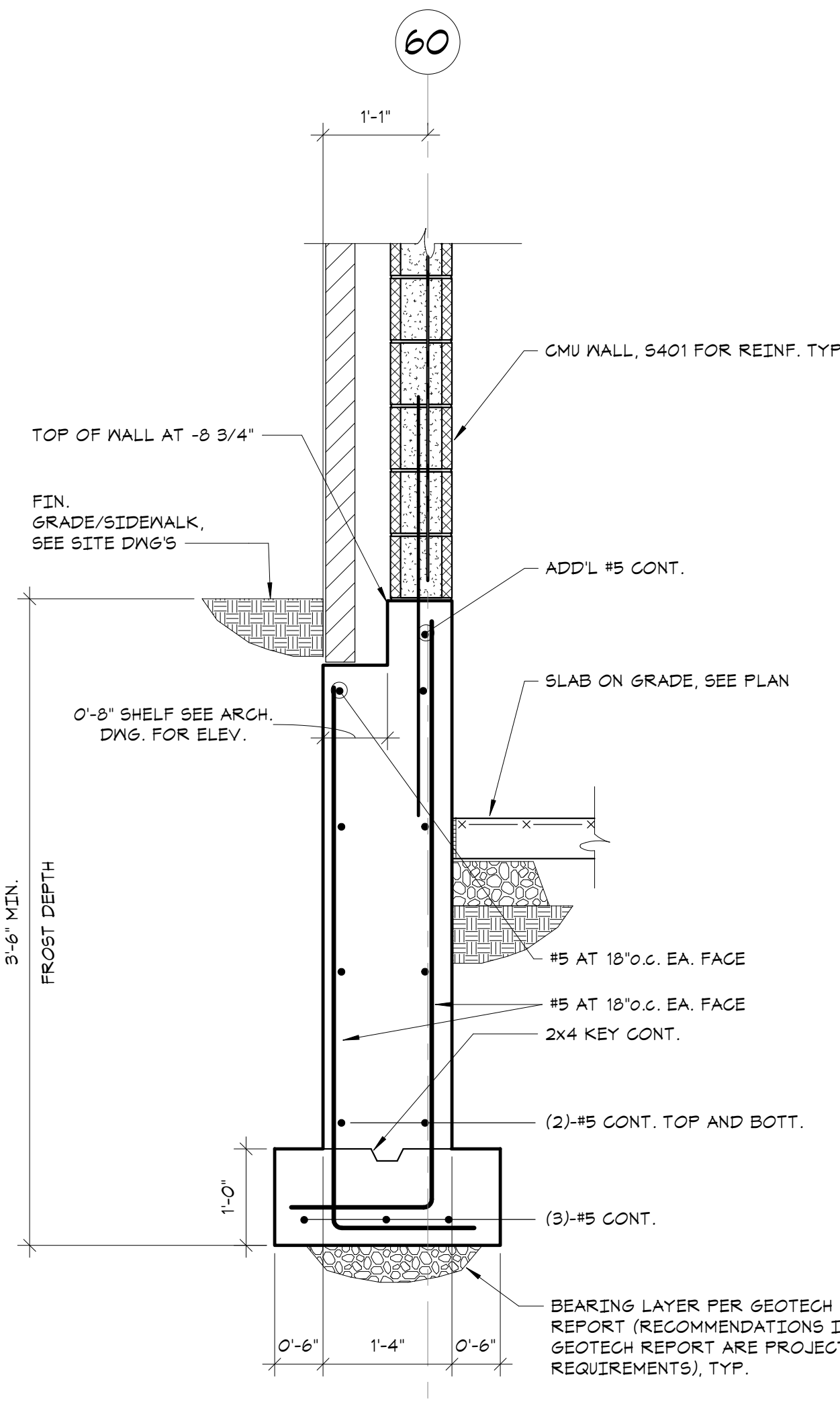
11/01/21 ISSUE FOR BID
07/14/21 CONSTRUCTION DOCS - NYSED
12/15/20 DESIGN DEVELOPMENT
08/31/20 SCHEMATIC DESIGN

No. 1 Date Issue

FOUNDATION SECTIONS

Job No. 20142.00 Date 10/30/2020
Scale AS NOTED Eng'n'r / Checked
Sheet Number Author Checker

S213



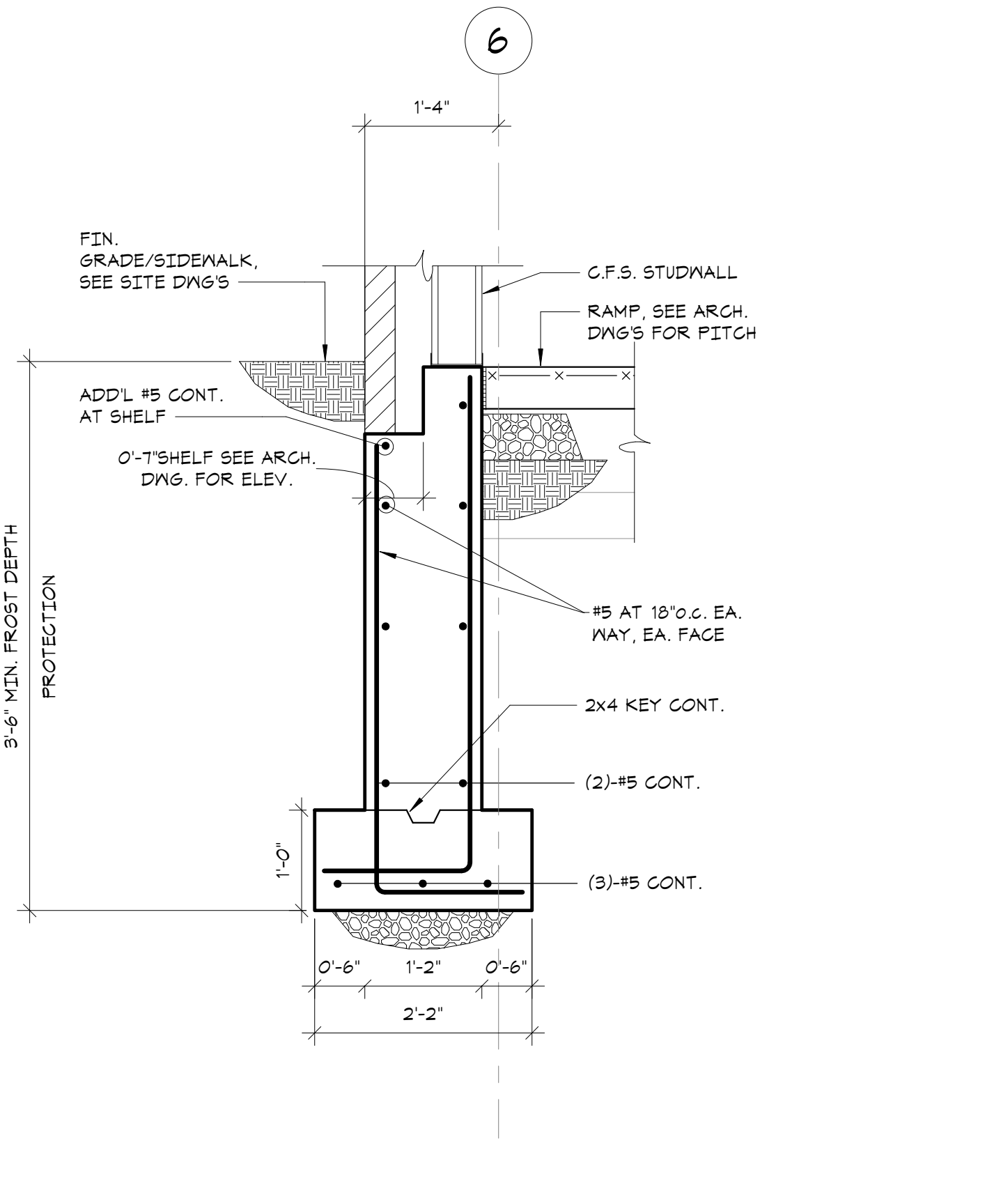
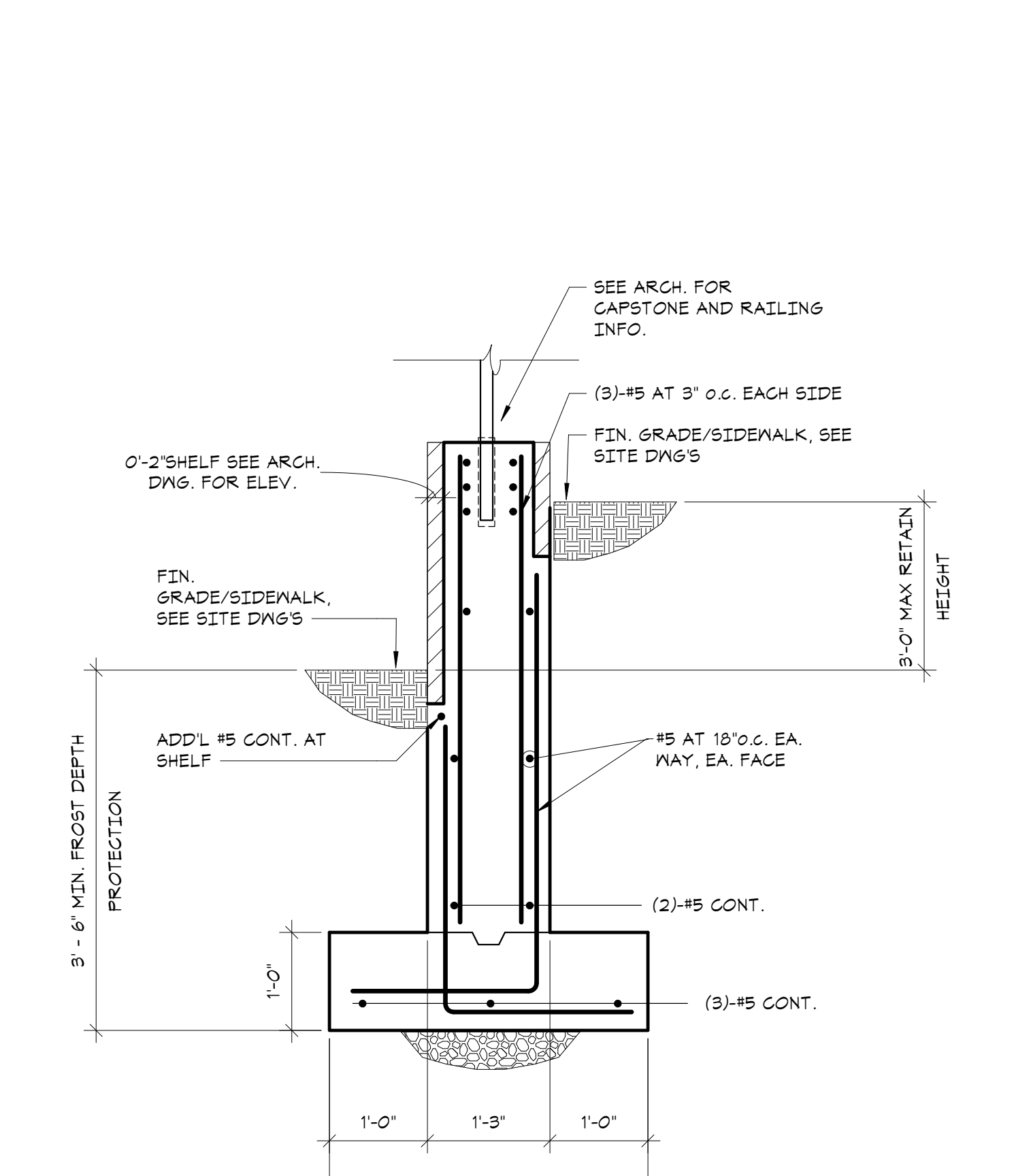
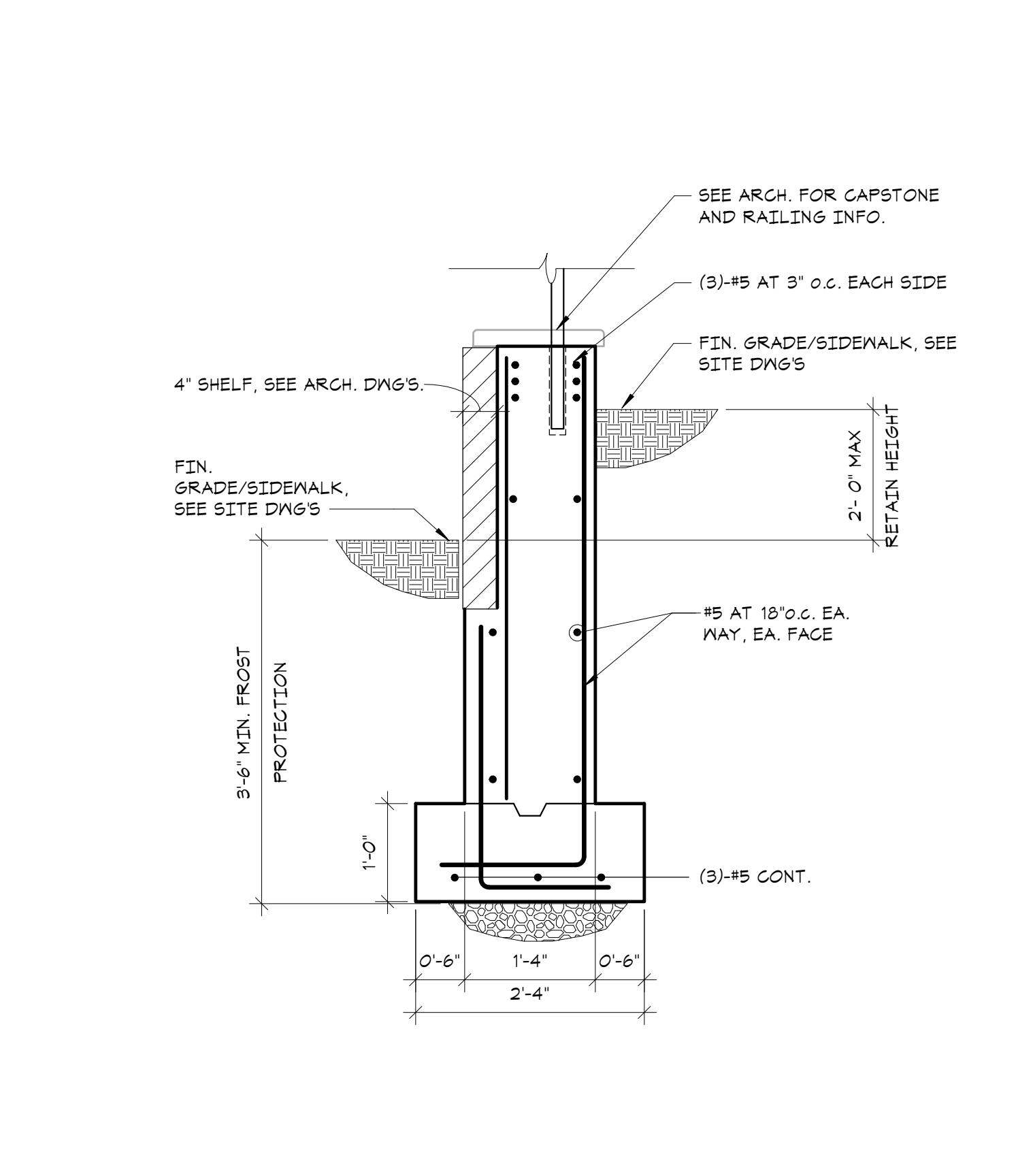
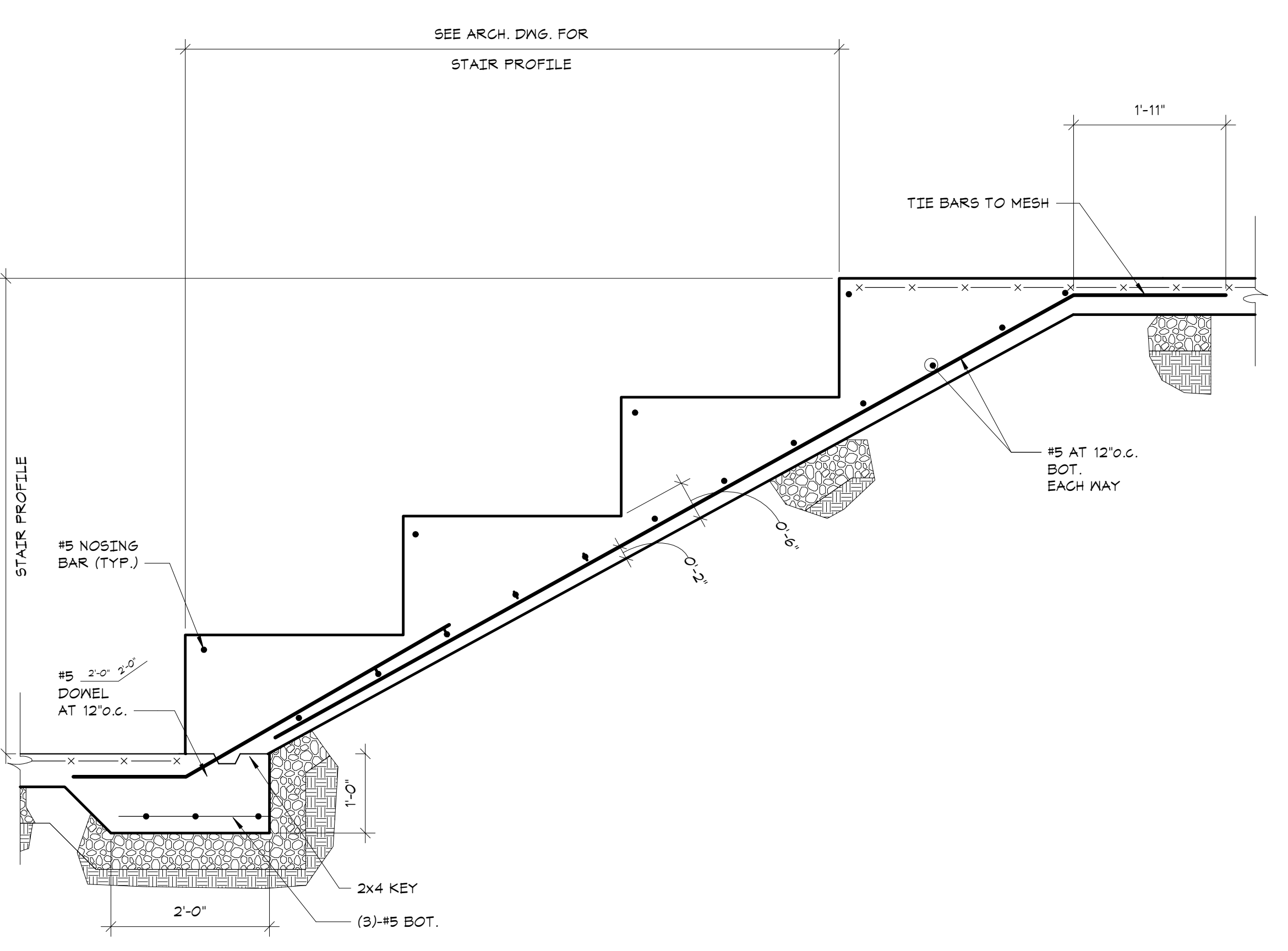
1 SECTION
3/4" = 1'-0"

2 SECTION
3/4" = 1'-0"

3 SECTION
3/4" = 1'-0"

4 SECTION
3/4" = 1'-0"

5 SECTION
3/4" = 1'-0"

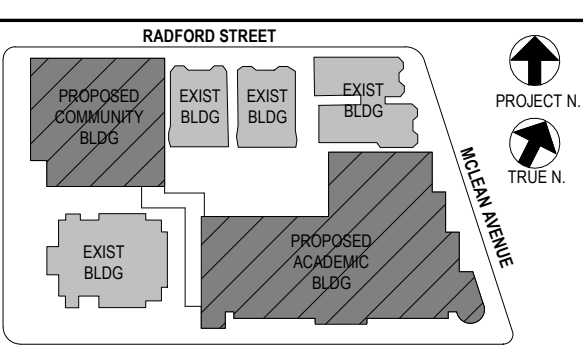


6 SECTION
3/4" = 1'-0"

7 SECTION
3/4" = 1'-0"

8 SECTION
3/4" = 1'-0"

9 SECTION
3/4" = 1'-0"



NOTE: ALL DESIGN, SPECIAL ARRANGEMENTS AND PLANS INDICATED OR REPRESENTED BY THIS DRAWING ARE OWNED BY AND ARE THE PROPERTY OF KAREEM GARMENT & DESIGN ARCHITECTS PC (KGD), AND WERE CREATED FOR USE ON THIS PROJECT. NONE OF SUCH DESIGN, SPECIAL ARRANGEMENTS OR PLANS SHALL BE USED BY OR DISCLOSED TO ANY PURPOSE WHATSOEVER WITHOUT THE WRITTEN PERMISSION OF KGD.

WRITTEN DIMENSIONS ON THIS DRAWING SHALL HAVE PRECEDENCE OVER SCALED DIMENSIONS. CONTRACTOR SHALL VERIFY ALL ACTUAL DIMENSIONS AND CONDITIONS ON THE JOB AND THE ARCHITECT MUST BE NOTIFIED OF ANY VARIATIONS FROM DIMENSIONS AND CONDITIONS SHOWN. PROFILES MUST BE SUBMITTED TO THIS OFFICE FOR APPROVAL BEFORE PROCEEDING WITH FABRICATION.

ALTERATIONS BY ANY PERSON IN ANY WAY OF ANY ITEM CONTAINED ON THIS DOCUMENT, UNLESS ACTING UNDER THE DIRECTION OF THE LICENSED ARCHITECT WHOSE PROFESSIONAL SEAL IS AFFIXED HERETO, IS A VIOLATION OF TITLE 16, SECTION 89-B (3) OF NEW YORK STATE LAW. COPYRIGHT KAREEM GARMENT & DESIGN ARCHITECTS & ENGINEERS, PC. ALL RIGHTS RESERVED.