

NEW COMMUNITY SCHOOL 35 AT ST DENIS SITE

YONKERS JOINT SCHOOL CONSTRUCTION BOARD

121 McLean Avenue,
Yonkers, NY 10705



KG+D . ARCHITECTS PC
285 MAIN STREET MOUNT KISCO, NEW YORK, 10549
P:914.668.5900 KGDARCHITECTS.COM



83 Wooster Heights Road | Suite 200
Lisef Farm Corporate Park | Danbury, CT 06810
(203) 490-4140 | www.dsleg.com

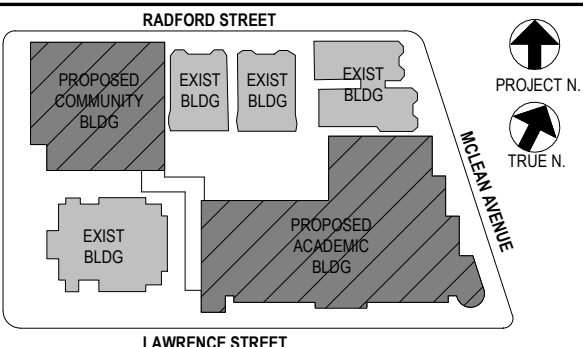
NY SED PROJECT CONTROL NO.
66-23-00-01-0-346-001

CONSTRUCTION DOCUMENTS

OWNERSHIP, USE AND ALTERATION OF DOCUMENTS:

The Client acknowledges that the documents, drawings, specifications including electronic media files are instruments of the Di Salvo Engineering Group's services and shall remain the property of The Di Salvo Engineering Group. The Client or any person or entity that acquires or obtains the drawings and specifications from or through The Client shall not use them on any other project, shall not modify, alter or change the drawings and specifications without written authorization from The Di Salvo Engineering Group. Furthermore, The Client agrees to the fullest extent permitted by law to indemnify and hold harmless The Di Salvo Engineering Group, its officers, directors and employees from any and all claims, suits, liability, demands or costs, including attorney fees arising out of or resulting therefrom.

SCOPE OF WORK RELATED TO SECTIONS AND DETAILS:
Work shown as "Typical Details" apply throughout the project as required.
Work shown as "Sections" shall be considered to apply for the same and similar conditions in the building.



NOTE: ALL DESIGN, SPECIAL ARRANGEMENTS AND PLANS INDICATED OR REPRESENTED BY THIS DRAWING ARE OWNED BY AND ARE THE PROPERTY OF ARCHITECTS AND ENGINEERS. NO PART OF THIS DRAWING OR ANY INFORMATION CONTAINED HEREIN SHALL BE REPRODUCED OR TRANSMITTED IN ANY FORM OR BY ANY MEANS, ELECTRONIC OR MECHANICAL, INCLUDING PHOTOCOPYING, RECORDING, OR BY ANY INFORMATION STORAGE AND RETRIEVAL SYSTEM, WITHOUT THE WRITTEN PERMISSION OF ARCHITECTS AND ENGINEERS.

WRITTEN DIMENSIONS ON THIS DRAWING SHALL HAVE PRECEDENCE OVER SCALE DIMENSIONS. CONTRACTORS SHALL VERIFY ALL ACTUAL DIMENSIONS AND CONDITIONS ON THE JOB AND THE ARCHITECT MUST BE NOTIFIED OF ANY VARIATIONS FROM DIMENSIONS AND CONDITIONS SHOWN. SHOP DRAWINGS MUST BE SUBMITTED TO THIS OFFICE FOR APPROVAL BEFORE PROCEEDING WITH FABRICATION.

ALTERATIONS BY ANY PERSON IN ANY WAY OF ANY ITEM CONTAINED ON THIS DOCUMENT, UNLESS ACTING UNDER THE DIRECTION OF THE LICENSED ARCHITECT WHOSE PROFESSIONAL SEAL IS AFFIXED HERETO, IS A VIOLATION OF TITLE 16, SECT. 89-B (3) OF NEW YORK STATE LAW. COPYRIGHT 2020, ARCHITECTS AND ENGINEERS, PC. ALL RIGHTS RESERVED.

Professional Seal

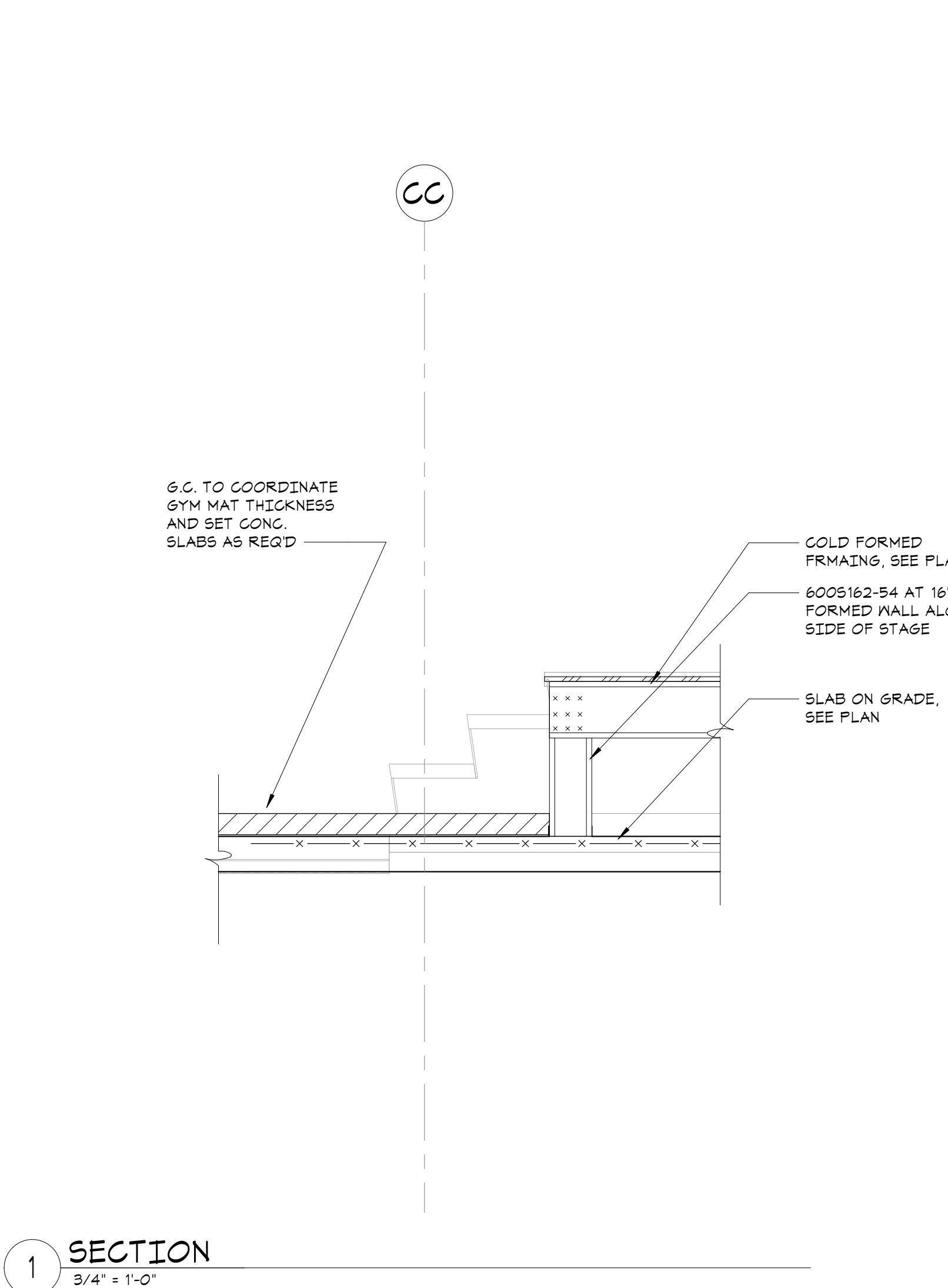
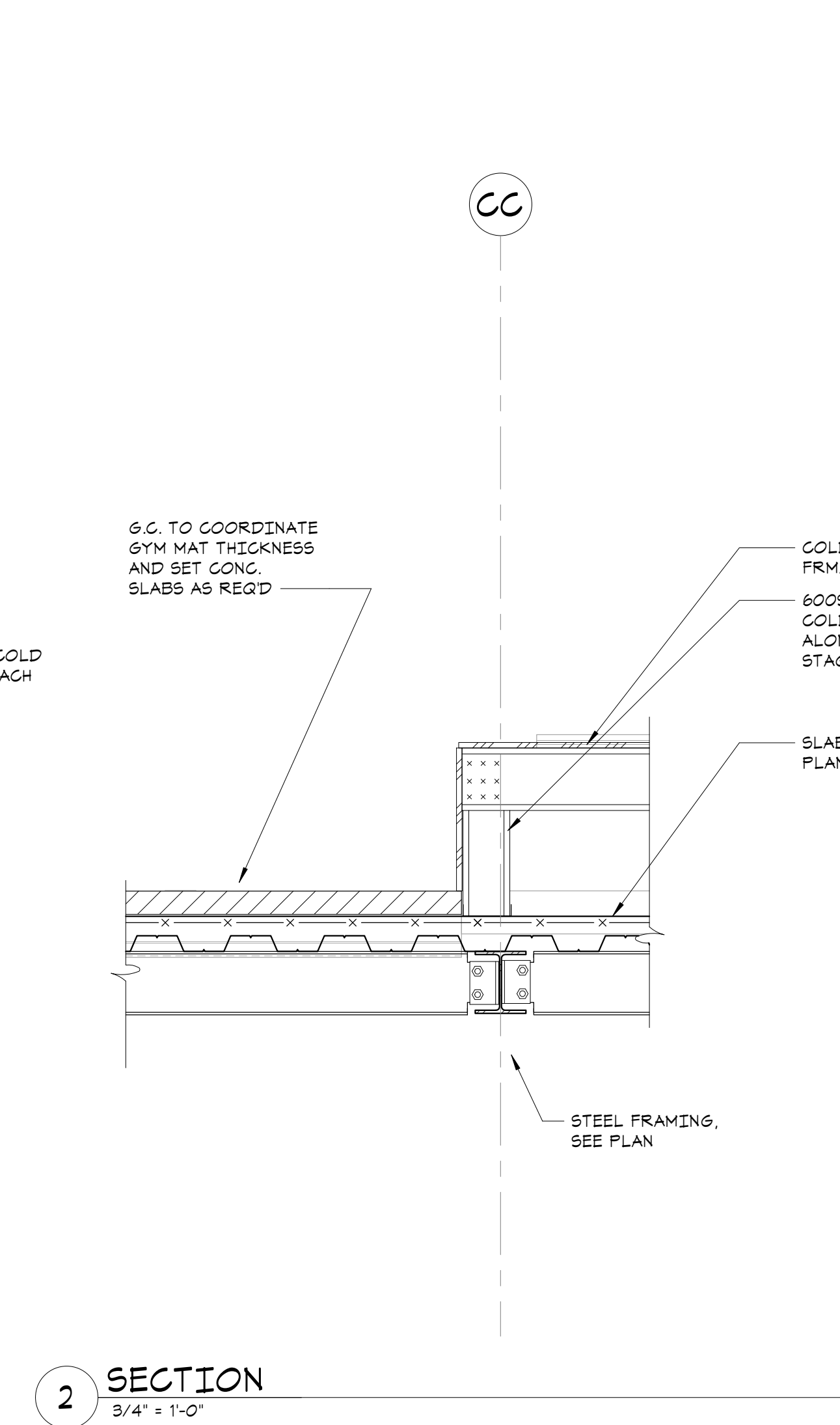
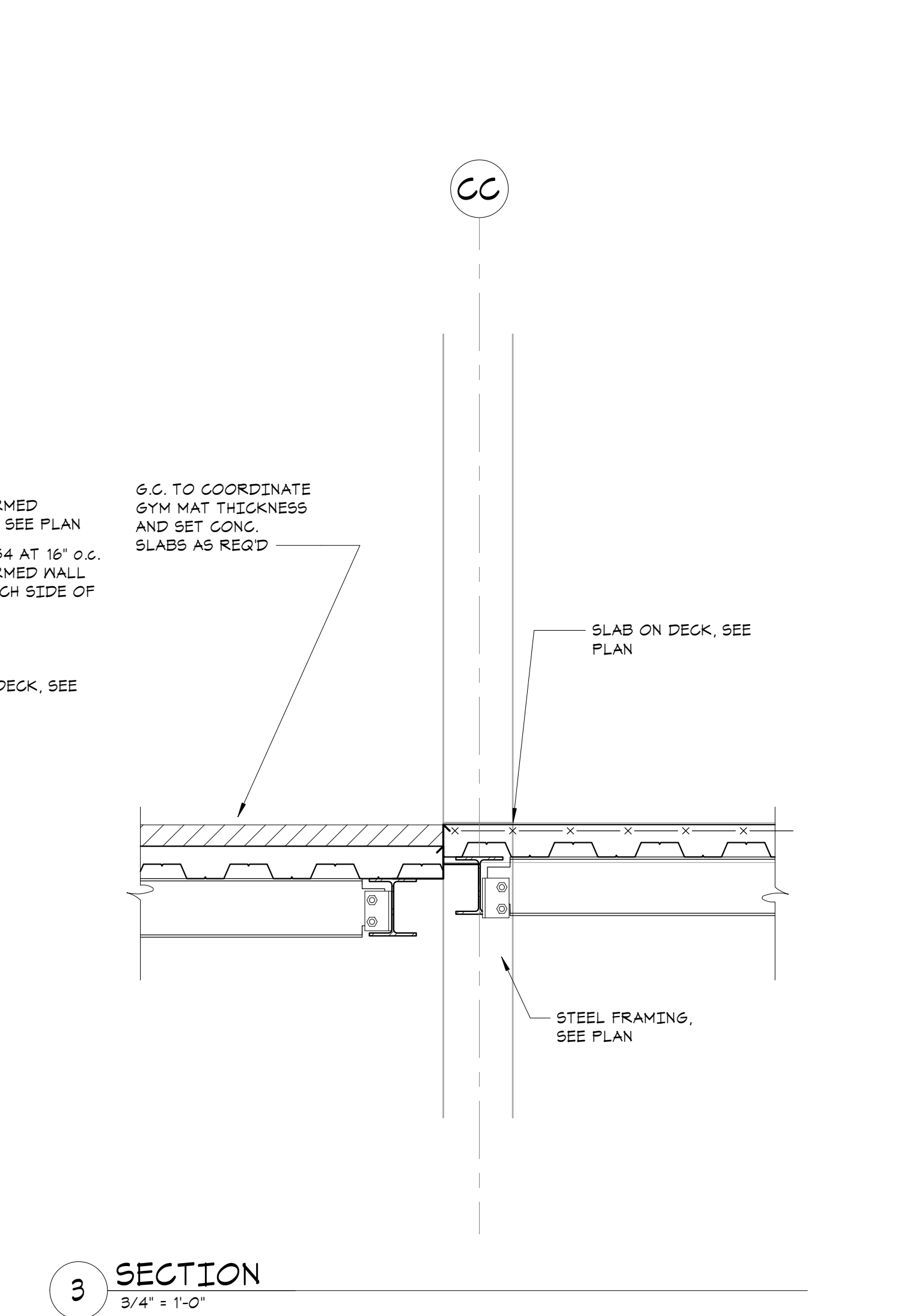
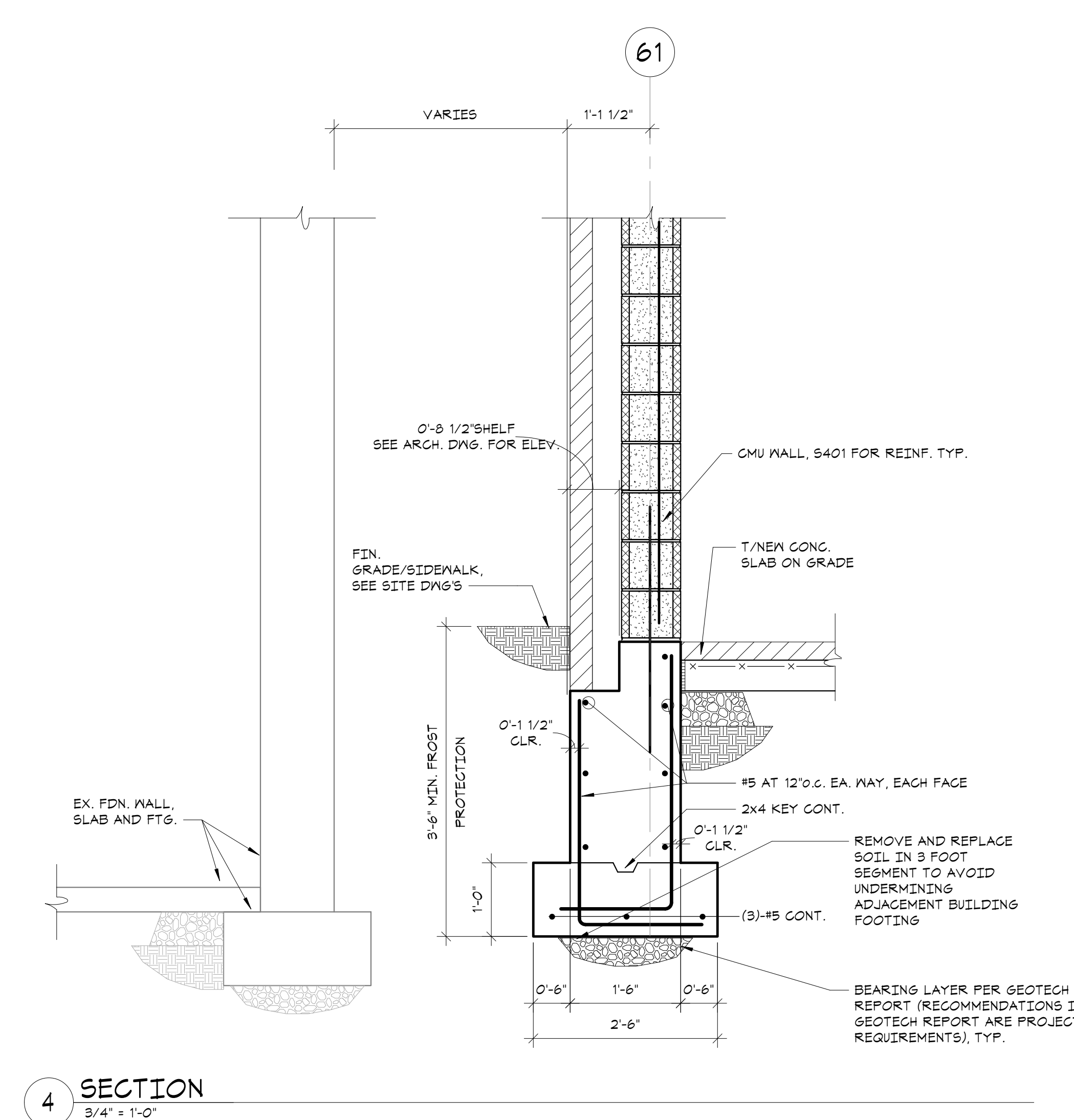
4	11/01/21	ISSUE FOR BID
3	07/14/21	CONSTRUCTION DOCS - NYSED
2	12/15/20	DESIGN DEVELOPMENT
1	08/31/20	SCHEMATIC DESIGN

No. 1 Date Issue

Sheet Title

FOUNDATION SECTIONS

Job No.	20142.00	Date	10/30/2020
Scale	AS NOTED	Engineer / Checked	Author / Checker
Sheet Number	S212		

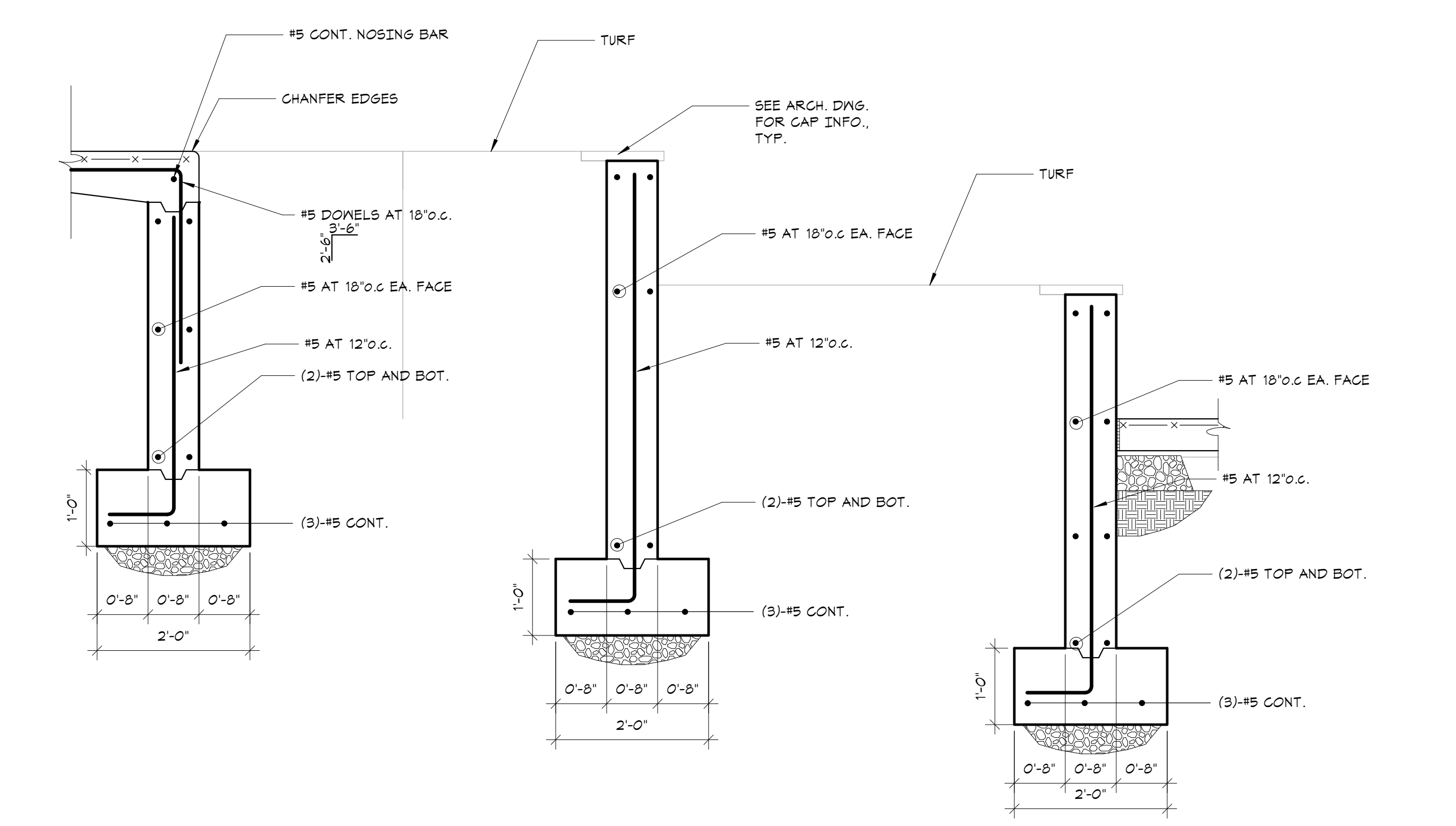


1 SECTION
3/4" = 1'-0"

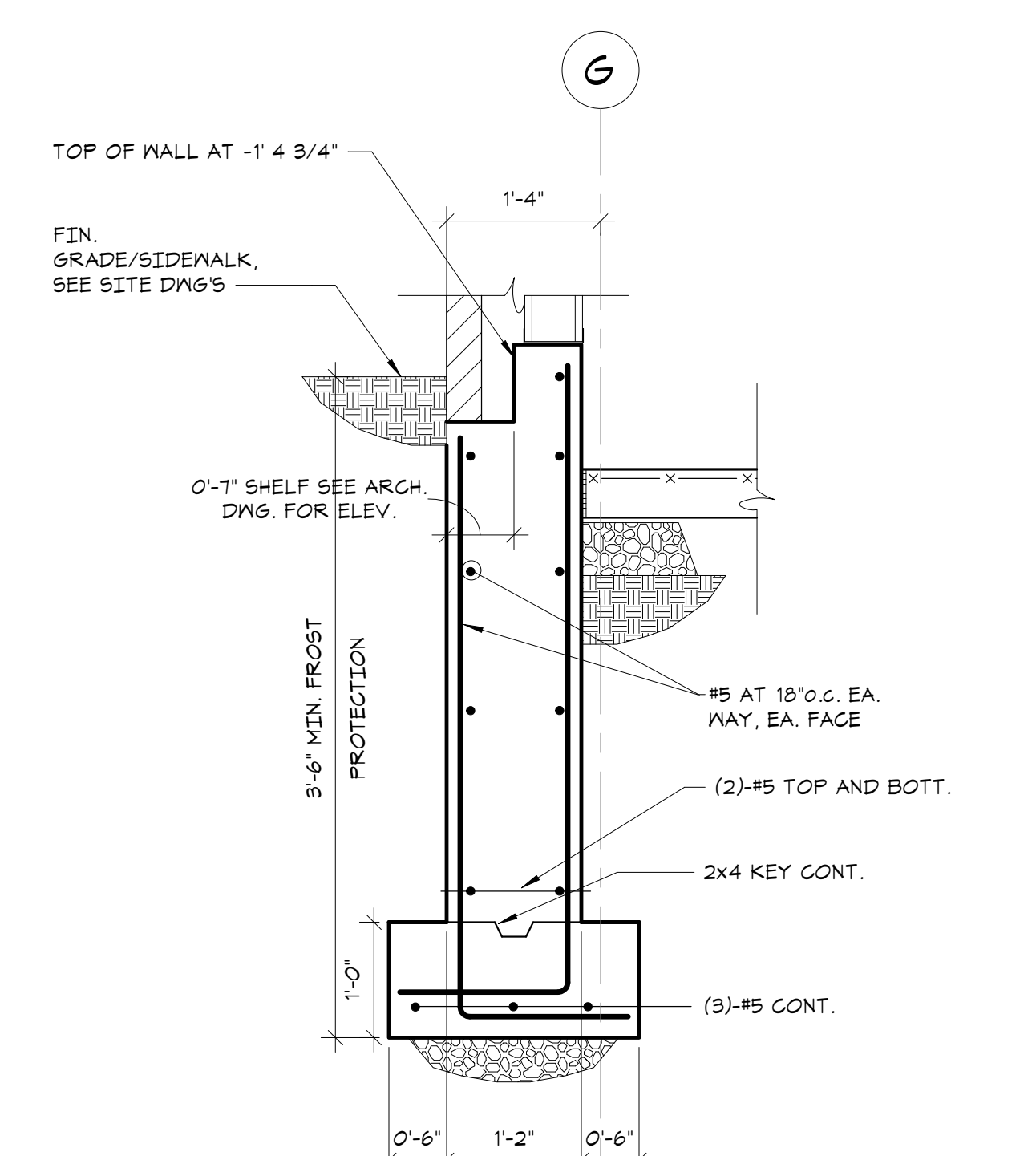
2 SECTION
3/4" = 1'-0"

3 SECTION
3/4" = 1'-0"

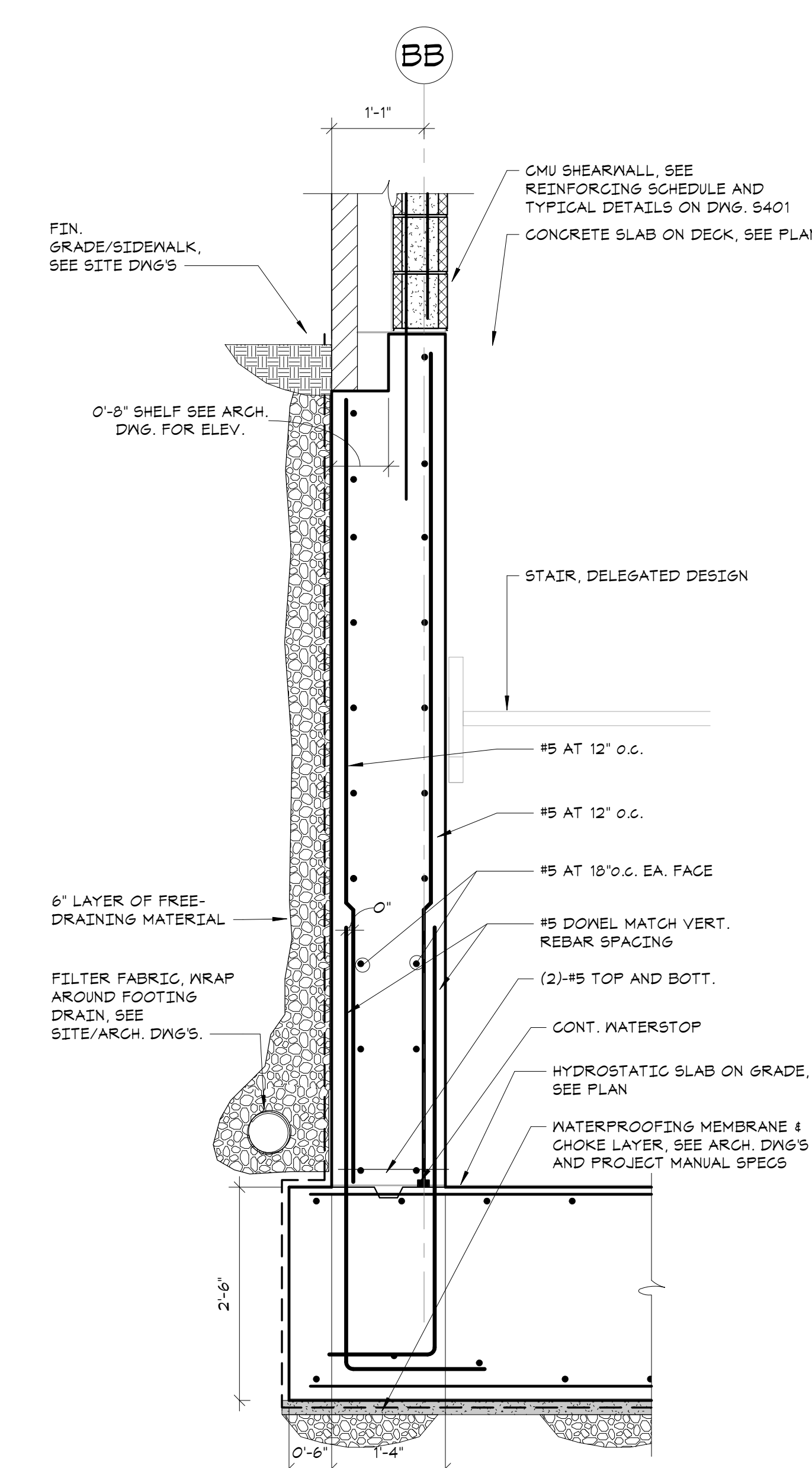
4 SECTION
3/4" = 1'-0"



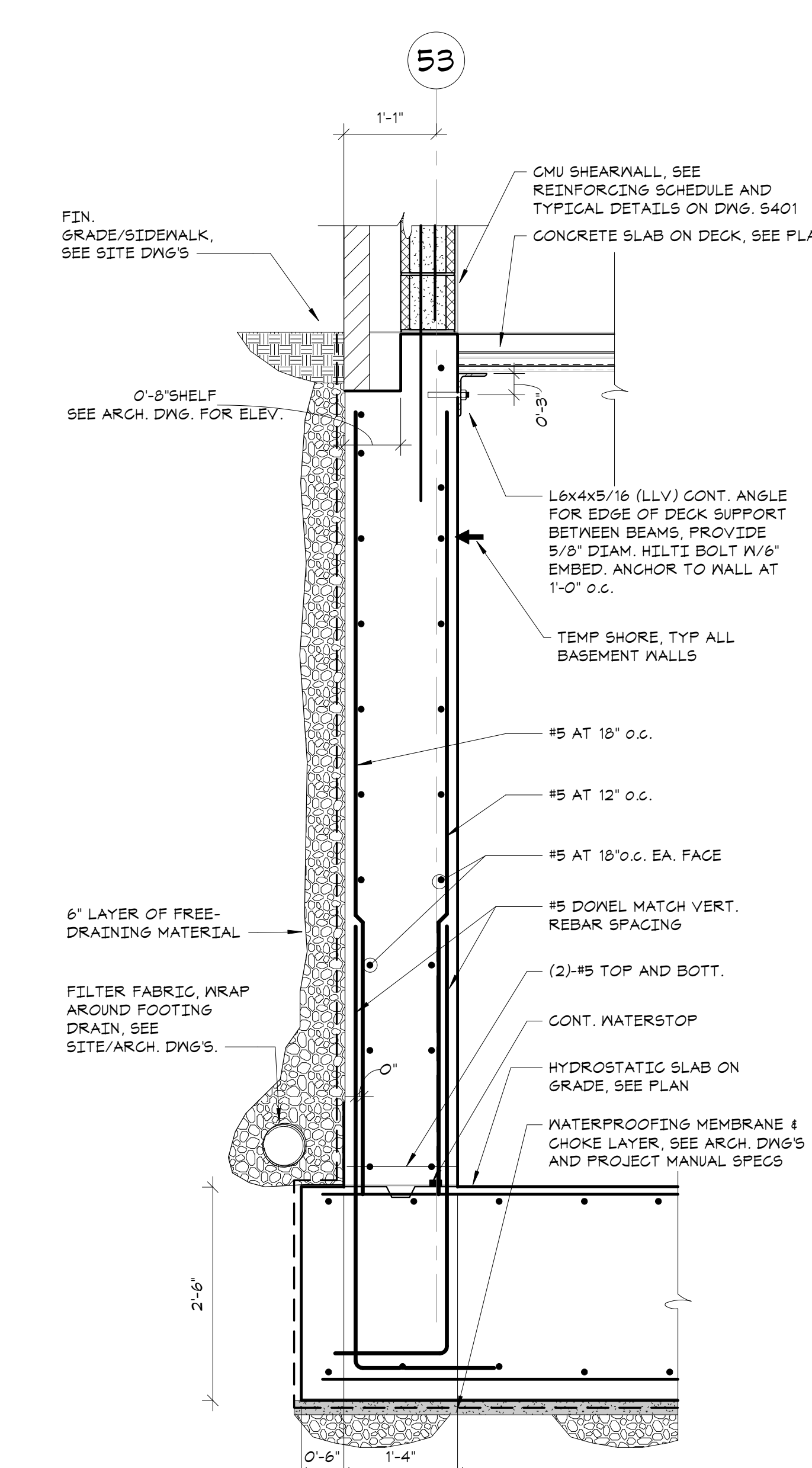
8 SECTION
3/4" = 1'-0"



7 SECTION
3/4" = 1'-0"



6 SECTION
3/4" = 1'-0"



5 SECTION
3/4" = 1'-0"