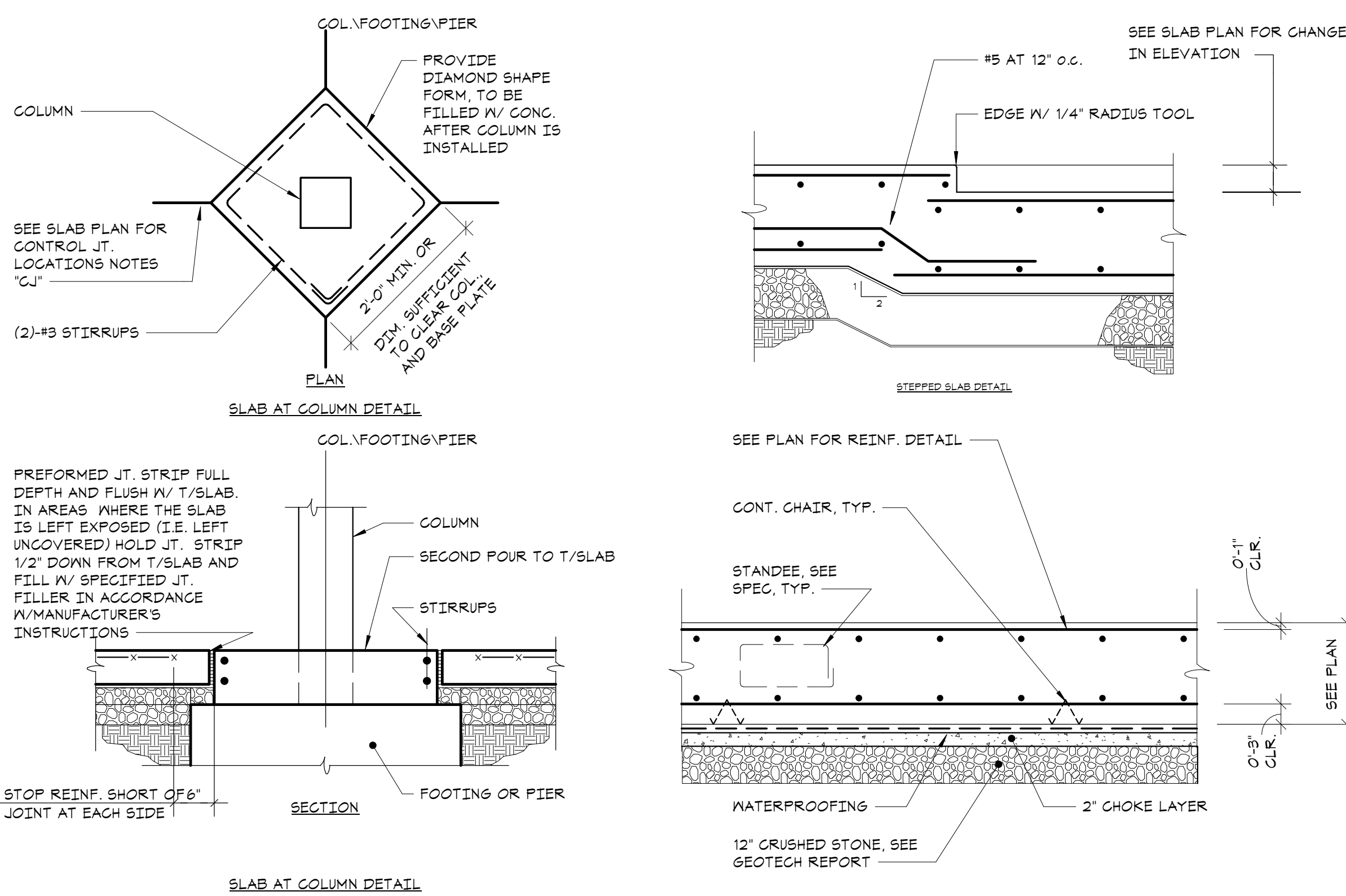
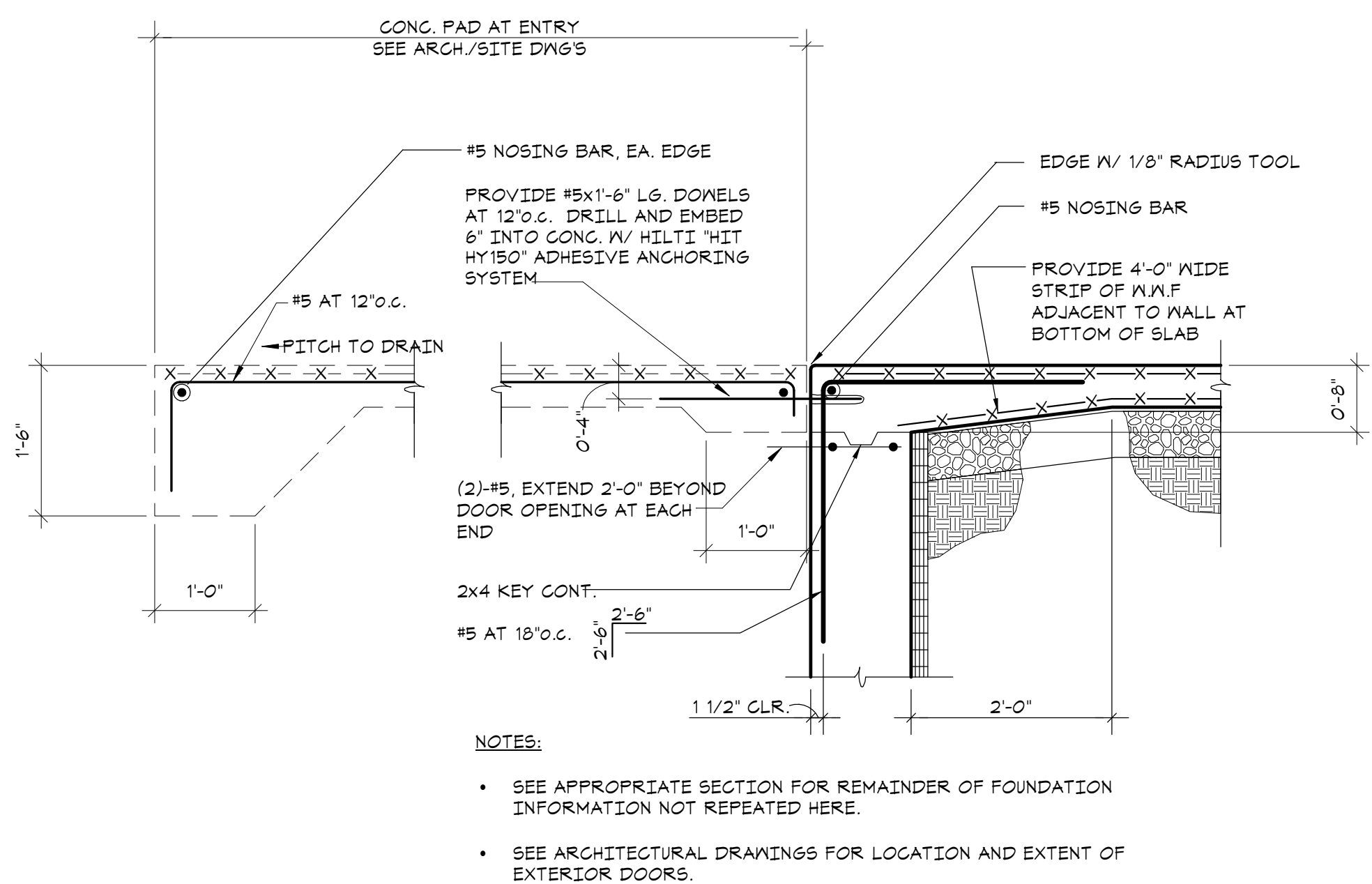


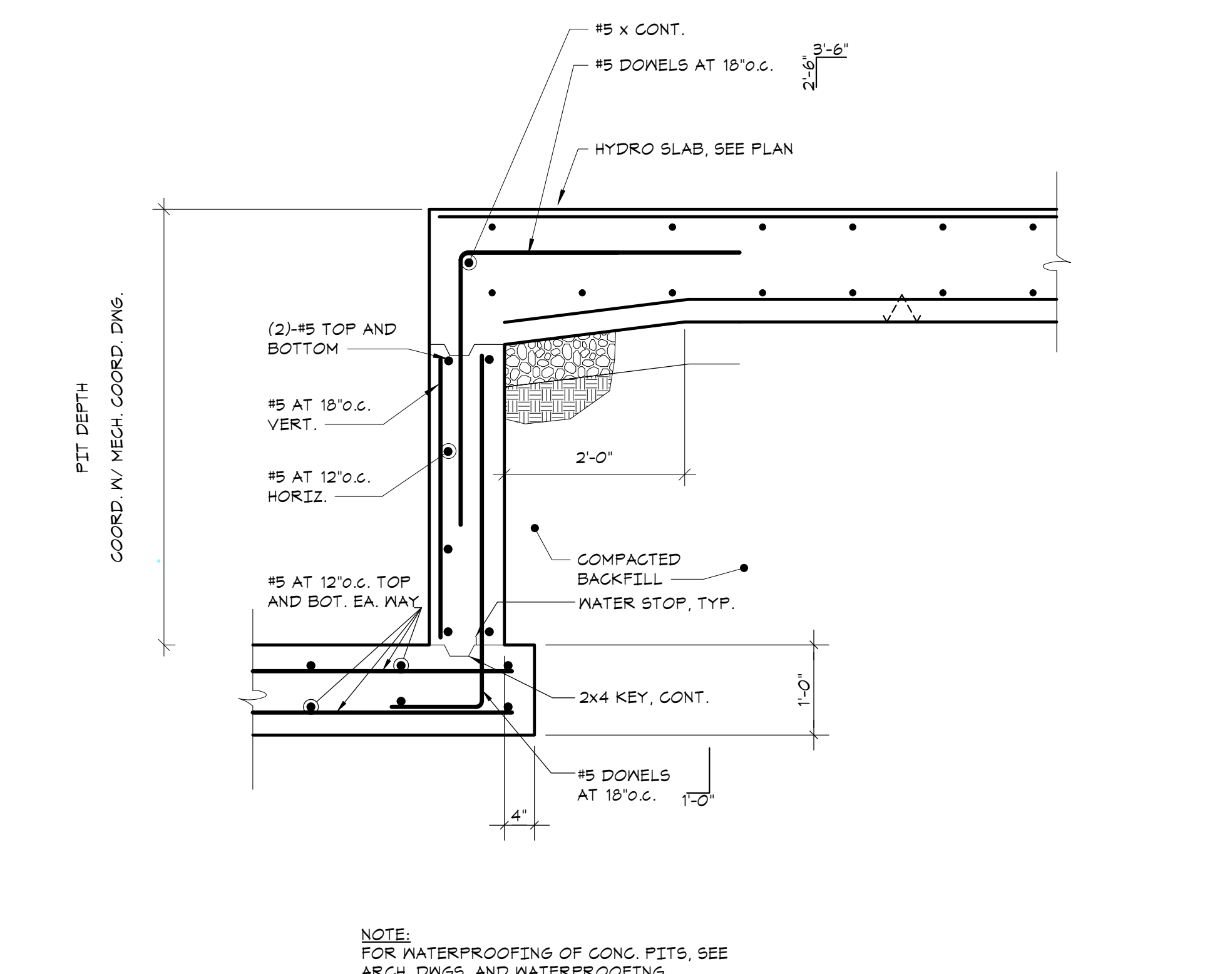
1 TYPICAL SLAB ON GRADE DETAILS  
NO SCALE



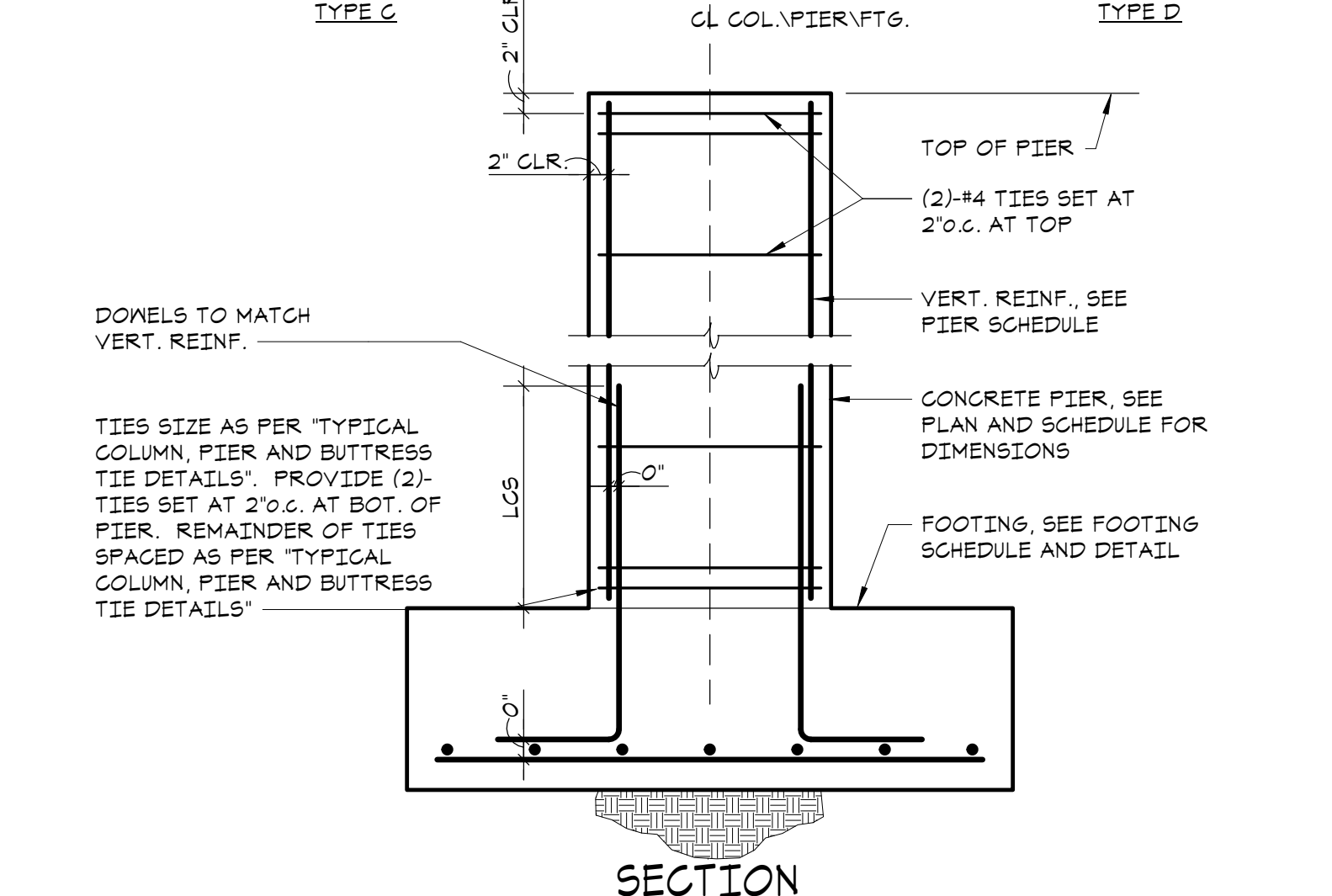
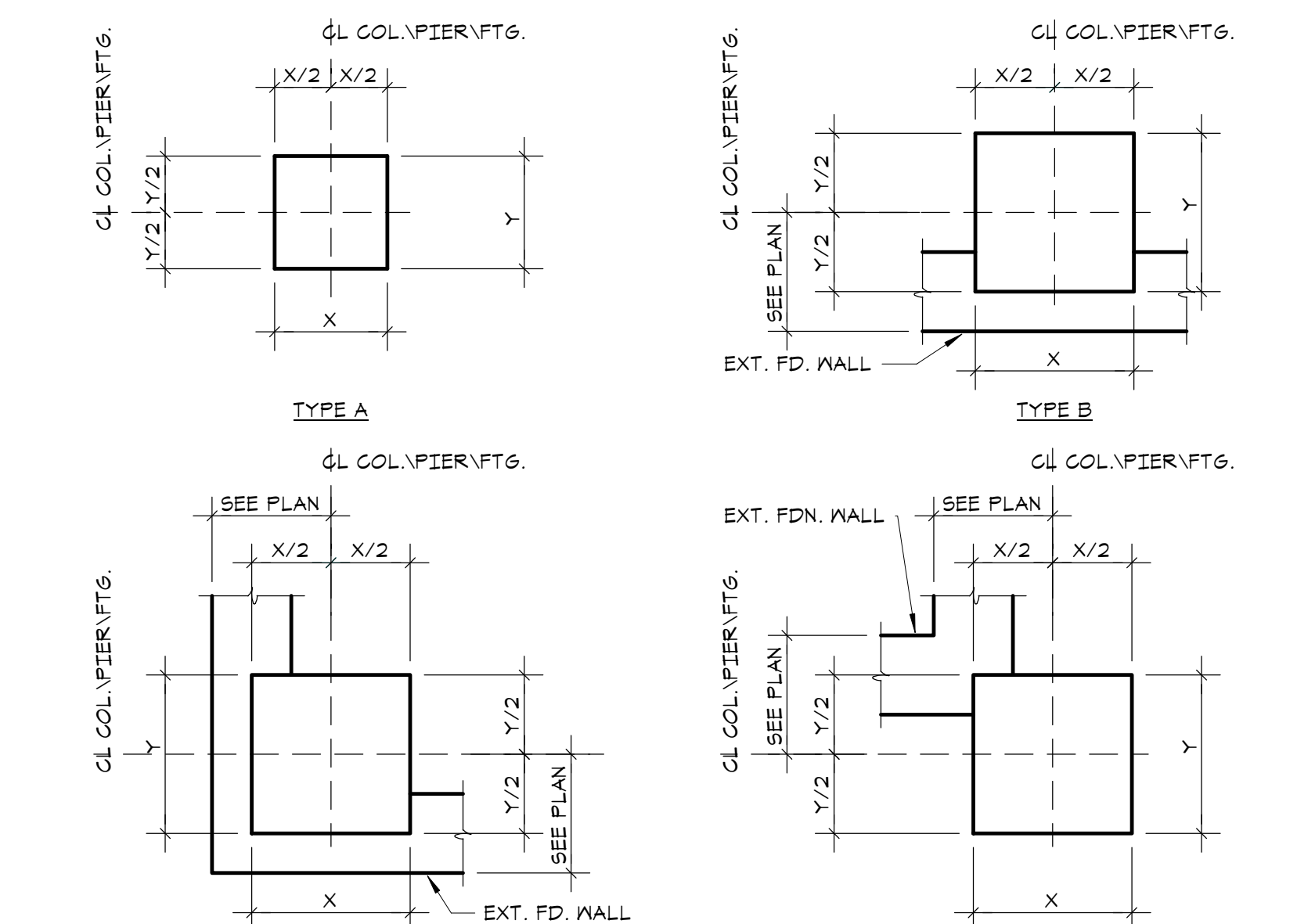
2 TYPICAL FOUNDATION WALL DETAIL AT EXTERIOR DOORS  
NO SCALE



3 TYPICAL PIER SCHEDULE AND PIER DETAILS  
NO SCALE



6 TYPICAL 42" SUMP PUMP PIT DETAIL  
NO SCALE



**PIER SCHEDULE**

MARK	TYPE	X' E-W DIR.	Y' N-S DIR.	VERTICAL REINF.	REMARKS
P-1	B	24'	2'-0"	(8)-#6	
P-2	B	24'	1'-8"	(8)-#6	

3 TYPICAL PIER SCHEDULE AND PIER DETAILS  
NO SCALE

**TYPICAL TIE ARRANGEMENT**  
\*\* INDICATES WHEN 6' OR LESS OMIT INTERIOR TIE.

**MAXIMUM SPACING OF TIES**

VERTICAL BAR SIZE	SIZE AND SPACING OF TIES		
	#3	#4	#5
#3	10'	-	-
#4	12'	-	-
#5	14'	-	-
#6	16'	16'	-
#8	18'	18'	-
#10	18'	20'	-
#11	†	22'	22'
#14	†	24'	27'
#18	†	24'	30'

† INDICATES #3 TIES NOT PERMITTED.

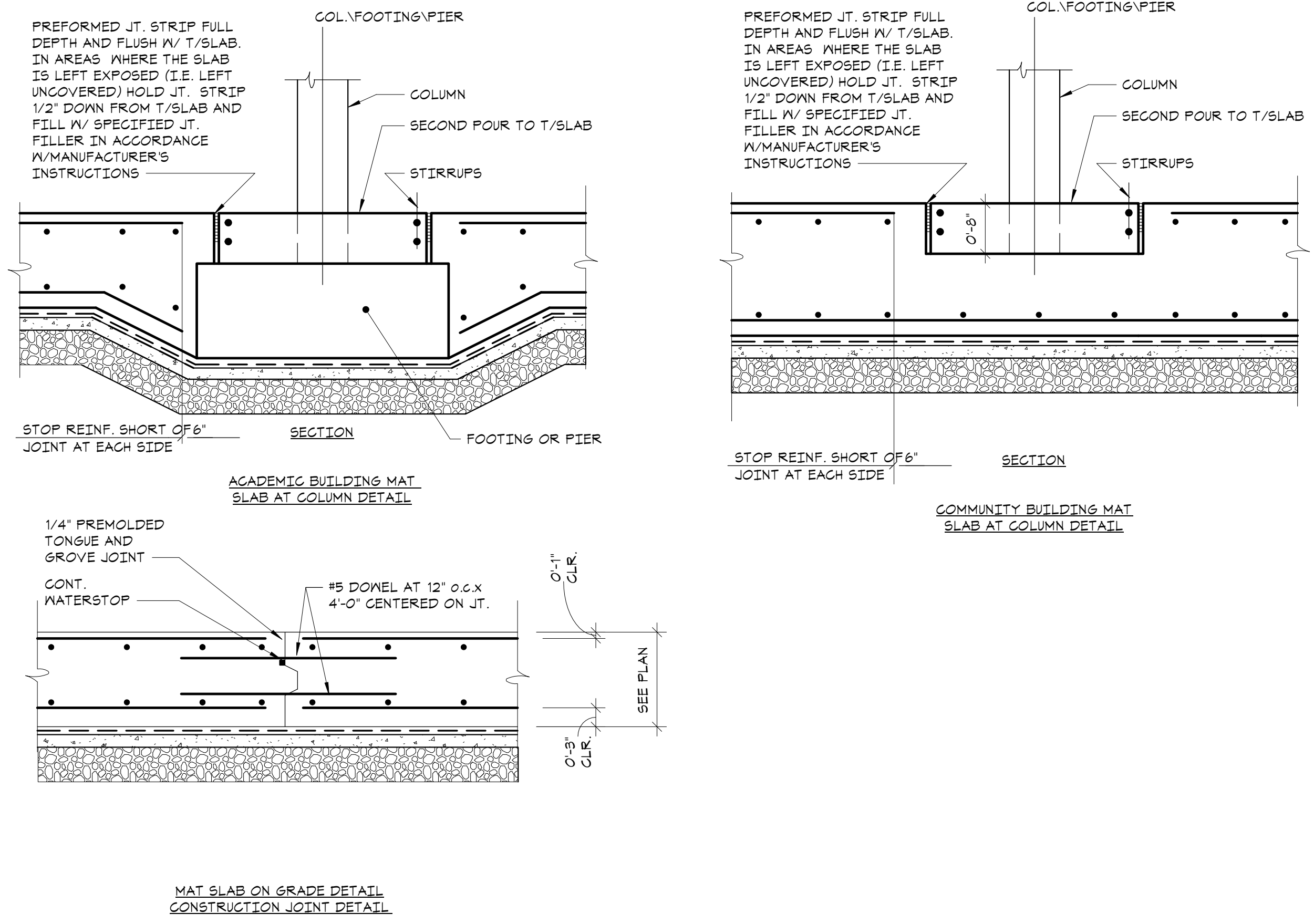
\*\* INDICATES MAX. SPACING NOT TO EXCEED LEAST DIMENSION OF COMPRESSION MEMBER.

**NOTES:**

- THE VERTICAL BARS SHALL BE SPACED AROUND THE PERIMETER SO AS TO ACHIEVE APPROXIMATELY EQUAL SPACING.
- SEE ARCHITECTURAL DRAWINGS FOR LOCATION AND EXTENT OF EXTERIOR DOORS.
- TIES SHALL BE ARRANGED SUCH THAT EVERY CORNER AND ALTERNATE VERTICAL BAR SHALL HAVE LATERAL SUPPORT PROVIDED BY THE CORNER OF A TIE WITH AN ENCLOSED ANGLE OF NOT MORE THAN 135 DEGREES AND NO BAR SHALL BE FURTHER THAN 6" CLEAR ON EACH SIDE ALONG THE TIE FROM SUCH A LATERALLY SUPPORTED BAR.
- TIES SHALL BE LOCATED VERTICALLY NOT MORE THAN ONE-HALF A TIE SPACING ABOVE THE TOP OF FOOTING OR SLAB IN ANY STORY, AND SHALL BE SPACED AS PROVIDED HEREIN TO NOT MORE THAN ONE-HALF A TIE SPACING BELOW THE LOWEST HORIZONTAL REINFORCEMENT IN SLAB OR DROP PANEL ABOVE.
- WHERE BEAMS OR BRACKETS FRAME FROM FOUR DIRECTIONS INTO A COLUMN, PIER OR BUTTRESS, TERMINATION OF TIES NOT MORE THAN 3" BELOW REINFORCEMENT IN SHALLOWNESS OF SUCH BEAMS OR BRACKETS SHALL NOT BE PERMITTED.
- SEE THE GENERAL NOTES ON DRAWING S1 FOR THE MINIMUM CONCRETE COVER REQUIREMENTS FOR REINFORCEMENT.

1. WHERE PIERS ARE ADJACENT TO FOUNDATION WALLS, PIERS ARE TO BE POURED MONOLITHICALLY WITH WALLS. PIER REINFORCING SHALL EXTEND WITHIN 2" OF OPPOSITE FACE WALL.

4 TYPICAL COLUMN, PIER AND BUTTRESS TIE DETAILS  
NO SCALE



**FOOTING SCHEDULE**  
(ALLOWABLE BEARING PRESSURE: 4000 PSF)

MARK	PLAN SIZE		THICKNESS	BOTTOM REINF.		REMARKS
	N-S	E-W		N-S	E-W	
F-3.0	9'-0"	3'-0"	1'-4"	(4)-#5	(4)-#5	
F-4.0	4'-0"	4'-0"	1'-4"	(5)-#5	(5)-#5	
F-5.0	5'-0"	5'-0"	1'-6"	(7)-#5	(7)-#5	
F-6.0	6'-0"	6'-0"	1'-6"	(8)-#5	(8)-#5	
F-7.0	7'-0"	7'-0"	2'-0"	(7)-#7	(7)-#7	
F-8.0	8'-0"	8'-0"	2'-0"	(7)-#7	(7)-#7	
F-9.0	9'-0"	9'-0"	2'-6"	(10)-#7	(10)-#7	
F-10.0	10'-0"	10'-0"	2'-6"	(11)-#7	(11)-#7	
F-11.0	11'-0"	11'-0"	2'-6"	(12)-#7	(12)-#7	
F-12.0	12'-0"	12'-0"	3'-0"	(16)-#7	(16)-#7	
F-13.0	13'-0"	13'-0"	3'-0"	(11)-#7	(17)-#7	
F-14.0	14'-0"	14'-0"	3'-0"	(12)-#8	(12)-#8	

**NOTES:**

- REFER TO FOOTING DETAILS AND FOUNDATION NOTES IN USING THIS SCHEDULE.
- \*\* PROVIDE TOP REINFORCING IN ADDITION TO BOTTOM REINFORCING. TOP REINFORCING SHALL BE PLACED 2" CLEAR FROM TOP OF FOOTING AND SHALL BE EQUAL TO SIZE AND SPACING OF BOTTOM REINFORCING.
- SHEAR WALL FOOTINGS AND COMBINED FOOTINGS ARE DESIGNED AS F-11H.
- CENTERLINE OF SHEAR WALL FOOTINGS SHALL BE LOCATED ON CENTERLINE OF SHEAR WALL AND 1'-0" IN FROM END OF SHEAR WALL. PROVIDE DONNELLS FROM FOOTINGS INTO SHEAR WALL CHU OR CONCRETE FOUNDATION WALLS.
- WHERE SHEAR WALL FOOTINGS OVERLAP WITH COLUMN FOOTINGS, COMBINE THE TWO FOOTINGS INCLUDING THE FULL AMOUNT OF REINFORCEMENT. ALIGN TOPS OF FOOTINGS.

5 FOOTING SCHEDULE AND DETAIL  
NO SCALE

**NEW COMMUNITY SCHOOL 35 AT ST DENIS SITE**  
YONKERS JOINT SCHOOL CONSTRUCTION BOARD  
121 McLean Avenue, Yonkers, NY 10705

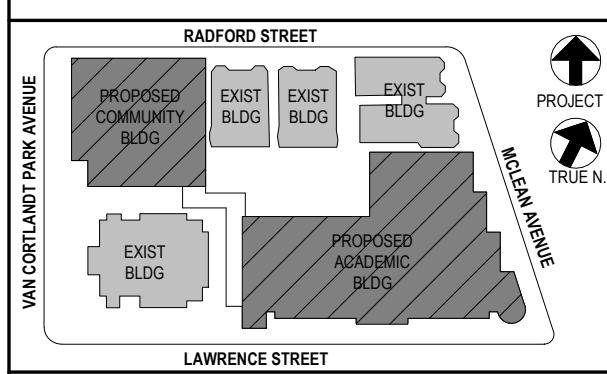
**KG+D** listen imagine build  
KG+D . ARCHITECTS PC  
285 MAIN STREET MOUNT KISCO, NEW YORK, 10549  
P:914.668.5900 KGDARCHITECTS.COM

**The Di Salvo Engineering Group**  
Structural Engineers  
83 Wooster Heights Road | Suite 200  
Lisle Farm Corporate Park | Danbury, CT 06810  
(203) 490-4140 | www.dsleg.com

NY SED PROJECT CONTROL NO.  
**66-23-00-01-0-346-001**  
CONSTRUCTION DOCUMENTS

**OWNERSHIP, USE AND ALTERATION OF DOCUMENTS:**  
The Client acknowledges that the documents, drawings, specifications including electronic files are instruments of the Di Salvo Engineering Group's services and shall remain the property of the Di Salvo Engineering Group. The Client or any person or entity that acquires or obtains the drawings and specifications from or through the Client shall not use them on any other project, shall not modify, alter or change the drawings and specifications without written authorization from the Di Salvo Engineering Group. Furthermore, the Client agrees to the fullest extent permitted by law to indemnify and hold harmless the Di Salvo Engineering Group, its officers, directors and employees from any and all claims, suits, liability, demands or costs, including attorney fees arising out of or resulting therefrom.

**SCOPE OF WORK RELATED TO SECTIONS AND DETAILS:**  
Work shown as "Typical Details" apply throughout the project as required. Work shown as "Sections" shall be considered to apply for the same and similar conditions in the building.



**NOTE:** ALL LEGAL RECORDS, ARRANGEMENTS AND PLANS INDICATED OR REFERRED TO IN THIS DRAWING ARE OWNED BY AND ARE THE PROPERTY OF ARCHITECTS AND ENGINEERS. NO PART OF THIS DRAWING OR ANY INFORMATION CONTAINED HEREIN SHALL BE REPRODUCED OR TRANSMITTED IN ANY FORM OR BY ANY MEANS, ELECTRONIC OR MECHANICAL, INCLUDING PHOTOCOPYING, RECORDING, OR BY ANY INFORMATION STORAGE AND RETRIEVAL SYSTEM, WITHOUT THE WRITTEN PERMISSION OF KG+D.

ALL DIMENSIONS ON THIS DRAWING SHALL HAVE PRECEDENCE OVER SCALE DIMENSIONS. CONTRACTOR SHALL VERIFY ALL ACTUAL DIMENSIONS AND CONDITIONS ON THE JOB AND THE ARCHITECT MUST BE NOTIFIED OF ANY VARIATIONS FROM DIMENSIONS AND CONDITIONS SHOWN. PROFILES MUST BE SUBMITTED TO THIS OFFICE FOR APPROVAL BEFORE PROCEEDING WITH FABRICATION.

ALTERATIONS BY ANY PERSON IN ANY WAY OF ANY ITEM CONTAINED ON THIS DOCUMENT, UNLESS ACTING UNDER THE DIRECTION OF THE LICENSED ARCHITECT OR PROFESSIONAL SEAL, IS A VIOLATION OF TITLE 16, SECTION 8-3.0 OF NEW YORK STATE LAW. COPYRIGHT 2020, KG+D ARCHITECTS & ENGINEERS, PC. ALL RIGHTS RESERVED.

Professional Seal

No.	Date	Issue
4	11/01/21	ISSUE FOR BIDS
3	07/14/21	CONSTRUCTION DOCS - NYSED
2	12/15/20	DESIGN DEVELOPMENT
1	08/31/20	SCHEMATIC DESIGN

Job No. 20142.00 Date 10/30/2020  
Scale AS NOTED Engr'n / Checked TM / JEM  
Sheet Number

**FOUNDATION SCHEDULES AND TYPICAL DETAILS**

**S201**