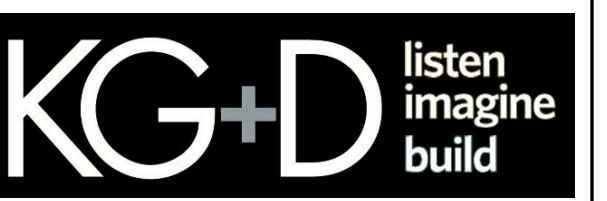


NEW COMMUNITY SCHOOL 35 AT ST DENIS SITE

YONKERS JOINT SCHOOL CONSTRUCTION BOARD

121 McLean Avenue,
Yonkers, NY 10705



KG+D . ARCHITECTS PC
285 MAIN STREET MOUNT KISCO, NEW YORK, 10549
P:914.666.5900 KGDARCHITECTS.COM



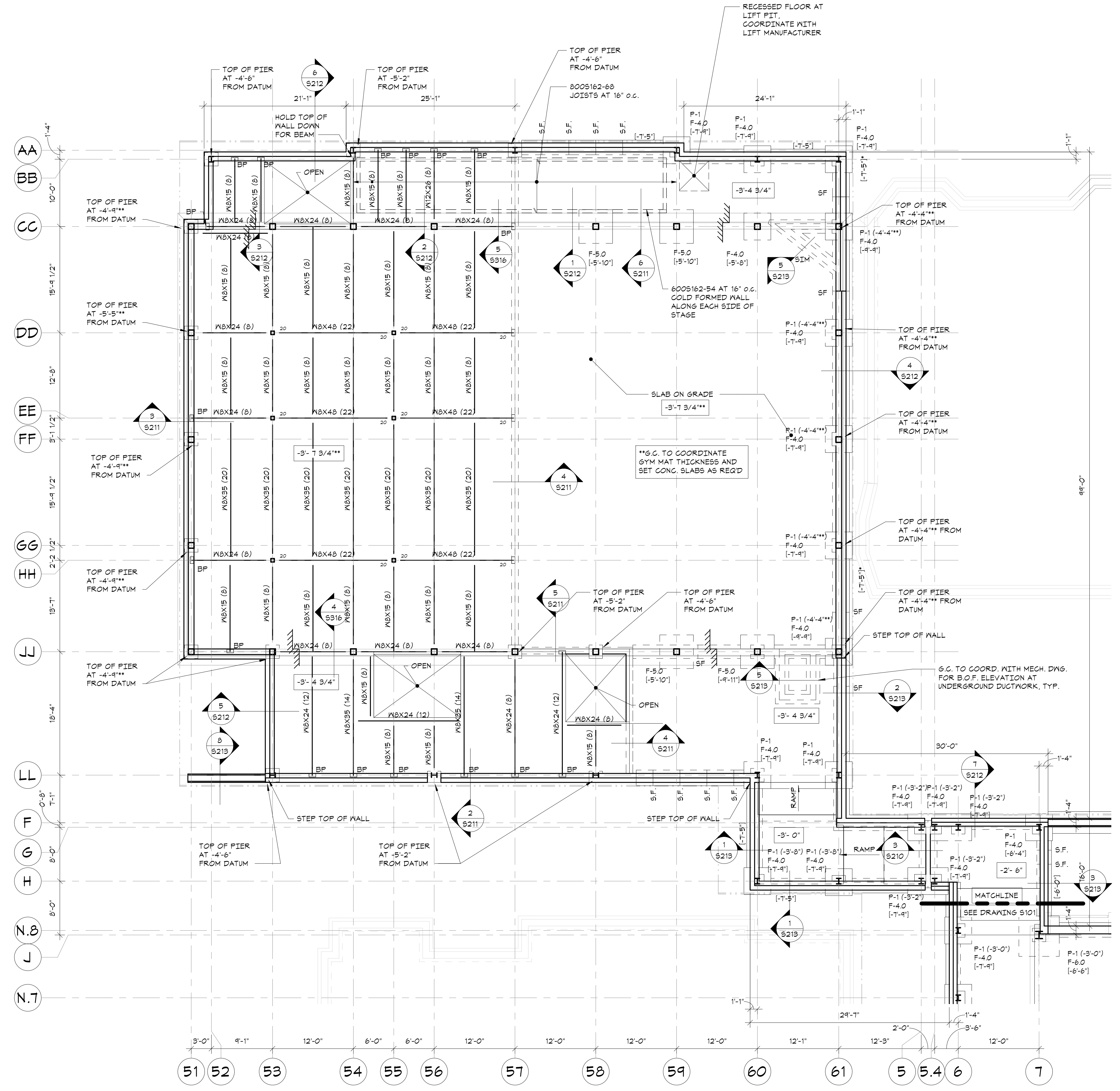
83 Wooster Heights Road | Suite 200
Lisle Farm Corporate Park | Danbury, CT 06810
(203) 490-1140 | www.dseng.com

NY SED PROJECT CONTROL NO.
66-23-00-01-0-346-001

CONSTRUCTION DOCUMENTS

OWNERSHIP, USE AND ALTERATION OF DOCUMENTS:

The Client acknowledges that the documents, drawings, specifications including electronic media files are instruments of The Di Salvo Engineering Group's services and shall remain the property of The Di Salvo Engineering Group. The Client or any person or entity that acquires or obtains the drawings and specifications from or through The Client shall not use them on any other project, shall not modify, alter or change the drawings and specifications without written authorization from The Di Salvo Engineering Group. Furthermore, The Client agrees to the fullest extent permitted by law to indemnify and hold harmless The Di Salvo Engineering Group, its officers, directors and employees from any and all claims, suits, liability, demands or costs, including attorney fees arising out of or resulting therefrom.

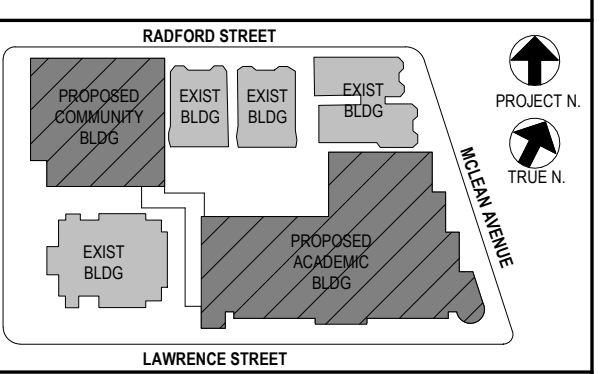


**COMMUNITY WING PART.
FOUNDATION AND
GROUND FLOOR SLAB-ON-
GRADE/FRAMING PLAN**

- 1/8"=1'-0"
- TOP OF GROUND FLOOR CONCRETE SLAB ON GRADE ELEVATION = -3'-4 3/4" FROM DATUM ELEVATION.
 - SLAB ON DECK CONSTRUCTION: 4 1/2" COMPOSITE CONCRETE SLAB + 2 1/2" NORMAL WEIGHT CONCRETE ON 2" COMPOSITE DECK REINFORCED WITH 6x6-M14xN14 W/F AS PER TYPICAL COMPOSITE BEAM FLOOR CONSTRUCTION DETAIL AND GENERAL NOTES.
 - SLAB ON GRADE CONSTRUCTION: 8" CONCRETE SLAB ON GRADE, REINFORCED WITH 6x6 -M14xN14 WELDED WIRE FABRIC, UNLESS OTHERWISE NOTED. FOR DETAILS, SEE "TYPICAL SLAB ON GRADE DETAILS".
 - FOR FOUNDATION CONDITION AT EXTERIOR DOORS, SEE "TYPICAL DETAIL AT EXTERIOR DOORS".
 - COORDINATE ALL PITS, TRENCHES, POCKETS, BRICK SHELVES, SLEEVES, PENETRATIONS AND INSERTS IN CONCRETE WALLS AND SLABS WITH ARCHITECTURAL AND MECHANICAL DRAWINGS.
 - ALL EXPOSED CONCRETE SHALL RECEIVE SMOOTH ARCH. FINISH.
 - SEE GENERAL NOTES, FOR ADDITIONAL INFORMATION.

LEGEND:

- [1/-] INDICATES BOTTOM OF FOOTING ELEVATION FROM TOP OF FIRST FLOOR CONCRETE SLAB DATUM ELEVATION.
- [1/.....] INDICATES TOP OF CONCRETE SLAB ELEVATION FROM TOP OF FIRST FLOOR CONCRETE SLAB DATUM ELEVATION. MAINTAIN FULL SLAB THICKNESS AT SLOPED AND DEPRESSED AREAS. SEE ARCHITECTURAL DRAWINGS FOR LOCATION AND EXTENT.
- [1/-] INDICATES TOP OF PIER ELEVATION FROM TOP OF DATUM ELEVATION.
- "SF" INDICATES APPROXIMATE LOCATION OF STEPS IN FOOTINGS ON PLAN. COORDINATE LOCATION AND ELEVATION WITH SITE GRADINGS AND MECHANICAL, ELECTRICAL AND PLUMBING DRAWINGS. FOR DETAILS, SEE "TYPICAL STEPPED FOOTING DETAIL".
- "CJ" INDICATES APPROXIMATE LOCATION OF CONTROL/CONSTRUCTION JOINTS IN SLABS ON GRADE. FOR DETAILS, SEE "TYPICAL SLAB ON GRADE DETAILS".
- F-# INDICATES FOOTING TYPE. SEE "FOOTING SCHEDULE AND FOOTING DETAIL".
- P-# INDICATES PIER TYPE. SEE "PIER SCHEDULE AND PIER DETAILS".
- "BP" INDICATES BEARING POCKET. SEE S402 FOR TYPICAL BEARING POCKET DETAIL.



NOTE: ALL IDEAS, DESIGN ARRANGEMENTS AND PLANS INDICATED OR REPRESENTED BY THIS DRAWING ARE OWNED BY AND ARE THE PROPERTY OF KGD+D ARCHITECTS PC. NO PART OF THIS DRAWING OR ANY INFORMATION CONTAINED HEREIN SHALL BE REPRODUCED OR TRANSMITTED IN ANY FORM OR BY ANY MEANS, WITHOUT THE WRITTEN PERMISSION OF KGD+D.

WRITTEN DIMENSIONS ON THIS DRAWING SHALL HAVE PRECEDENCE OVER SCALE DIMENSIONS. CONTRACTOR SHALL VERIFY ALL ACTUAL DIMENSIONS AND CONDITIONS ON THE JOB AND THE ARCHITECT MUST BE NOTIFIED OF ANY VARIATIONS FROM DIMENSIONS AND CONDITIONS SHOWN. SCHEDULES MUST BE SUBMITTED TO THIS OFFICE FOR APPROVAL, BEFORE PROCEEDING WITH FABRICATION.

ALTERATIONS BY ANY PERSON IN ANY WAY OF ANY ITEM CONTAINED ON THIS DOCUMENT, UNLESS ACTING UNDER THE DIRECTION OF THE LICENSED ARCHITECT WHOSE PROFESSIONAL SEAL IS ATTACHED HERETO, IS A VIOLATION OF TITLE 16, SECTION 26-3.0 OF NEW YORK STATE LAW. COPYRIGHT 2020, KGD+D ARCHITECTS & ENGINEERS, PC. ALL RIGHTS RESERVED.

Professional Seal

No.	Date	Issue
4	11/01/21	ISSUE FOR BID
3	07/14/21	CONSTRUCTION DOCS - NYSED
2	12/15/20	DESIGN DEVELOPMENT
1	08/31/20	SCHEMATIC DESIGN

Job No.		Date	
20142.00		10/30/2020	
Scale		Engr'n / Checked	
AS NOTED		TM / EM	
Sheet Number			
S111			

