

**NEW COMMUNITY SCHOOL 35 AT ST DENIS SITE**

YONKERS JOINT SCHOOL CONSTRUCTION BOARD

121 McLean Avenue,  
Yonkers, NY 10705



**KG+D . ARCHITECTS PC**  
285 MAIN STREET MOUNT KISCO, NEW YORK, 10549  
P:914.666.5900 KGDARCHITECTS.COM



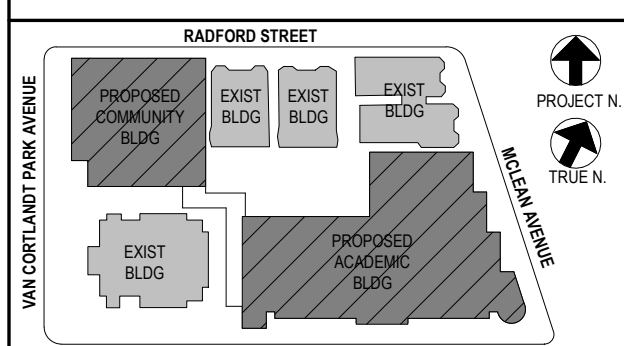
83 Wooster Heights Road | Suite 200  
Lisle Farm Corporate Park | Danbury, CT 06810  
(203) 490-1140 | www.dsleg.com

NY SED PROJECT CONTROL NO.  
**66-23-00-01-0-346-001**

CONSTRUCTION DOCUMENTS

**OWNERSHIP, USE AND ALTERATION OF DOCUMENTS:**

The Client acknowledges that the documents, drawings, specifications including electronic media files are instruments of The DiSalvo Engineering Group's services and shall remain the property of The DiSalvo Engineering Group. The Client or any person or entity that acquires or obtains the drawings and specifications from or through The Client shall not use them on any other project, shall not modify, alter or change the drawings and specifications without written authorization from The DiSalvo Engineering Group. Furthermore, The Client agrees to the fullest extent permitted by law to indemnify and hold harmless The DiSalvo Engineering Group, its officers, directors and employees from any and all claims, suits, liability, demands or costs, including attorney fees arising out of or resulting therefrom.



NOTE: ALL LEGAL, RECORD, ARRANGEMENTS AND PLANS INDICATED OR REPRESENTED BY THIS DRAWING ARE OWNED BY AND ARE THE PROPERTY OF KIMBERLY GARNETT & ASSOCIATES ARCHITECTS PC (KGA), AND WHEN CREATED FOR USE ON THIS PROJECT, NONE OF SUCH LEGAL, RECORD, ARRANGEMENTS OR PLANS SHALL BE USED BY OR DISCLOSED TO ANY PURPOSE WHATSOEVER WITHOUT THE WRITTEN PERMISSION OF KGA.

WRITTEN DIMENSIONS ON THIS DRAWING SHALL HAVE PRECEDENCE OVER SCALED DIMENSIONS. CONTRACTOR SHALL VERIFY ALL ACTUAL DIMENSIONS AND CONDITIONS ON THE JOB AND THE ARCHITECT MUST BE NOTIFIED OF ANY VARIATIONS FROM DIMENSIONS AND CONDITIONS SHOWN. DIMENSIONAL TOLERANCES SHALL BE SUBMITTED TO THIS OFFICE FOR APPROVAL BEFORE PROCEEDING WITH FABRICATION.

ALTERATIONS BY ANY PERSON IN ANY WAY OF ANY ITEM CONTAINED ON THIS DOCUMENT, UNLESS ACTING UNDER THE DIRECTION OF THE LICENSED ARCHITECT WHOSE PROFESSIONAL SEAL IS AFFIXED HERETO, IS A VIOLATION OF TITLE 16, SECT. 89-3 (a) OF NEW YORK STATE LAW. COPYRIGHT 2021, KIMBERLY GARNETT & ASSOCIATES ARCHITECTS & ENGINEERS, PC. ALL RIGHTS RESERVED.

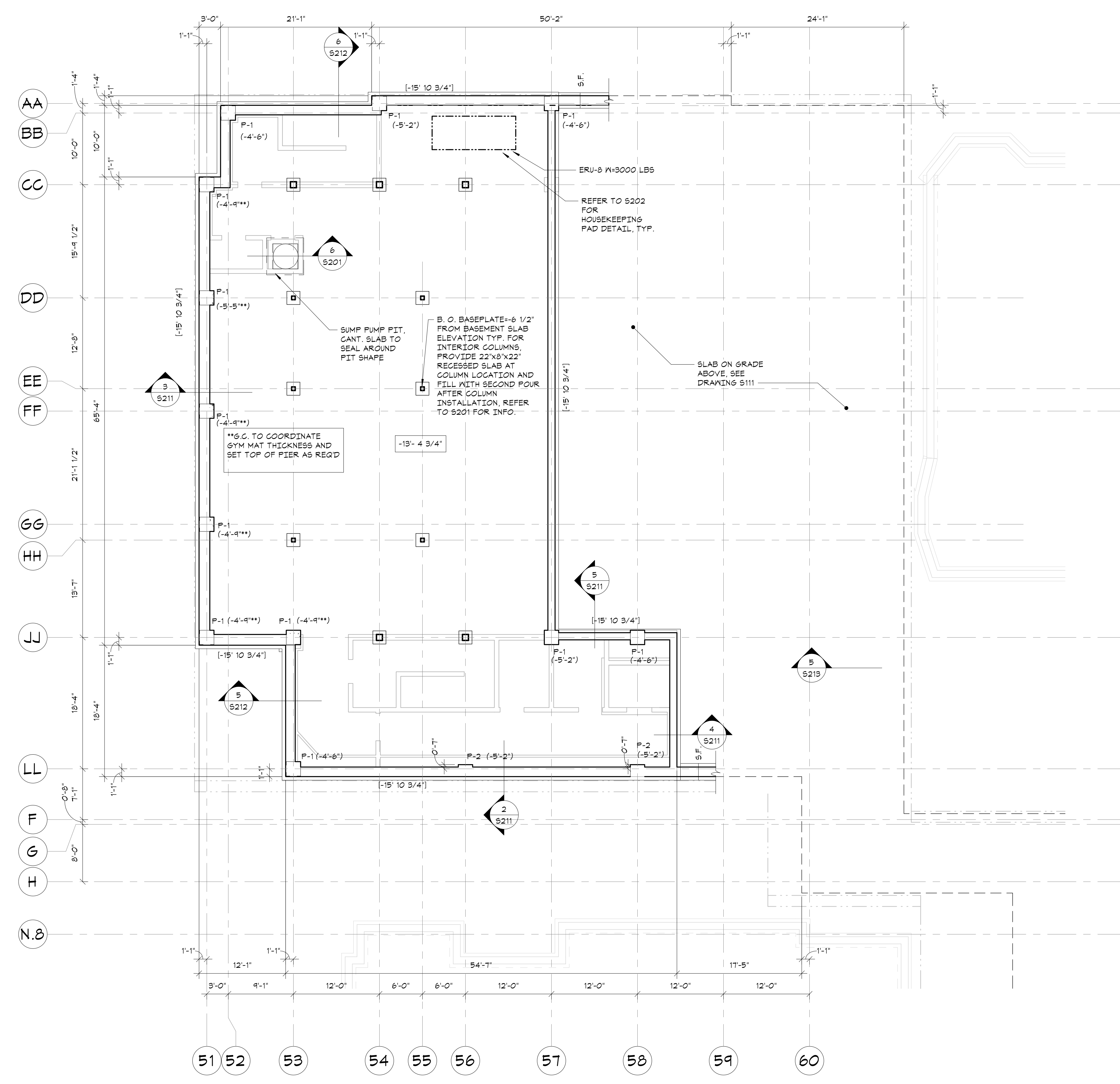
Professional Seal

No.	Date	Issue
4	11/01/21	ISSUE FOR BID
3	07/14/21	CONSTRUCTION DOCS - NYSED
2	12/15/20	DESIGN DEVELOPMENT
1	08/31/20	SCHEMATIC DESIGN

**COMMUNITY WING PART. FOUNDATION AND LOWER LEVEL SLAB ON GRADE PLAN**

Job No. 20142.00 Date 10/30/2020  
Scale AS NOTED Eng'n'r / Checked TM / EM

Sheet Number **S110**



**COMMUNITY WING PART. FOUNDATION AND LOWER LEVEL SLAB ON GRADE PLAN**  
1/8"=1'-0"

- TOP OF BASEMENT FLOOR CONCRETE SLAB ON GRADE ELEVATION = -13'-4 3/4" FROM DATUM ELEVATION.
- FLOOR CONSTRUCTION: 30" CONCRETE SLAB ON GRADE, REINFORCED WITH #6 AT 12" O.C. TOP AND BOTTOM, UNLESS OTHERWISE NOTED. FOR DETAILS, SEE "TYPICAL SLAB ON GRADE DETAILS".
- FOR FOUNDATION CONDITION AT EXTERIOR DOORS, SEE "TYPICAL DETAIL AT EXTERIOR DOORS".
- COORDINATE ALL PITS, TRENCHES, POCKETS, BRICK SHELVES, SLEEVES, PENETRATIONS AND INSERTS IN CONCRETE WALLS AND SLABS WITH ARCHITECTURAL AND MECHANICAL DRAWINGS.
- ALL EXPOSED CONCRETE SHALL RECEIVE SMOOTH ARCH. FINISH.
- SEE GENERAL NOTES, FOR ADDITIONAL INFORMATION.

**LEGEND:**

- [1'-0" ...] INDICATES BOTTOM OF FOOTING ELEVATION FROM TOP OF FIRST FLOOR CONCRETE SLAB DATUM ELEVATION.
- [1'-0" ...] INDICATES TOP OF CONCRETE SLAB ELEVATION FROM TOP OF FIRST FLOOR CONCRETE SLAB DATUM ELEVATION. MAINTAIN FULL SLAB THICKNESS AT SLOPED AND DEPRESSED AREAS. SEE ARCHITECTURAL DRAWINGS FOR LOCATION AND EXTENT.
- [1'-0" ...] INDICATES TOP OF PIER ELEVATION FROM TOP OF DATUM ELEVATION.
- 'S#'' INDICATES APPROXIMATE LOCATION OF STEPS IN FOOTINGS ON PLAN. COORDINATE LOCATION AND ELEVATION WITH SITE GRADING AND MECHANICAL, ELECTRICAL AND PLUMBING DRAWINGS. FOR DETAILS, SEE "TYPICAL STEPPED FOOTING DETAIL".
- 'C#'' INDICATES APPROXIMATE LOCATION OF CONTROL/CONSTRUCTION JOINTS IN SLABS ON GRADE. FOR DETAILS, SEE "TYPICAL SLAB ON GRADE DETAILS".
- 'F-#'' INDICATES FOOTING TYPE. SEE "FOOTINGS SCHEDULE AND FOOTING DETAIL".
- 'P-#'' INDICATES PIER TYPE. SEE "PIER SCHEDULE AND PIER DETAILS".
- 'BP'' INDICATES BEARING POCKET. SEE 5402 FOR TYPICAL BEARING POCKET DETAIL.