

NEW COMMUNITY SCHOOL 35 AT ST DENIS SITE

YONKERS JOINT SCHOOL CONSTRUCTION BOARD

121 McLean Avenue,
Yonkers, NY 10705



KG+D . ARCHITECTS PC
285 MAIN STREET MOUNT KISCO, NEW YORK, 10549
P:914.668.5900 KGDARCHITECTS.COM



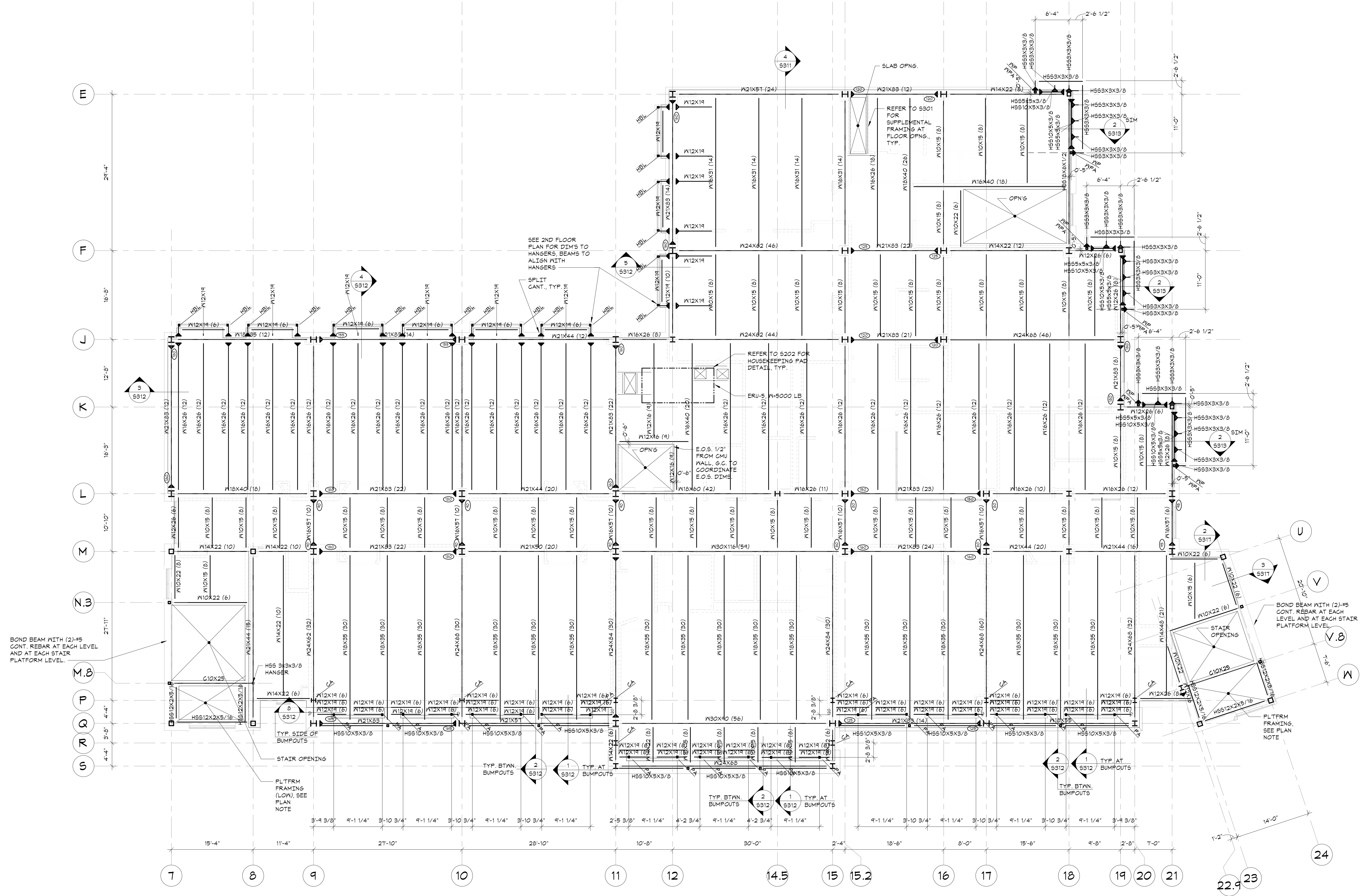
83 Wooster Heights Road | Suite 200
Leff Farm Corporate Park | Danbury, CT 06810
(203) 490-1140 | www.dsleg.com

NY SED PROJECT CONTROL NO.
66-23-00-01-0-346-001

CONSTRUCTION DOCUMENTS

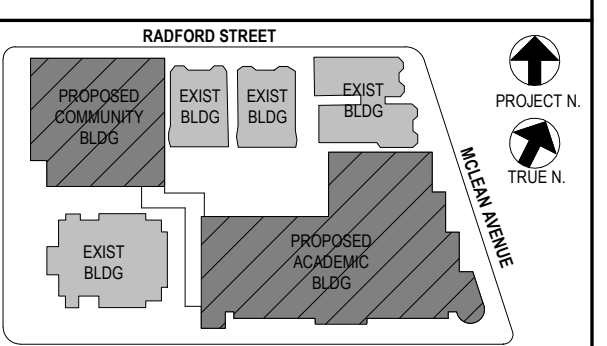
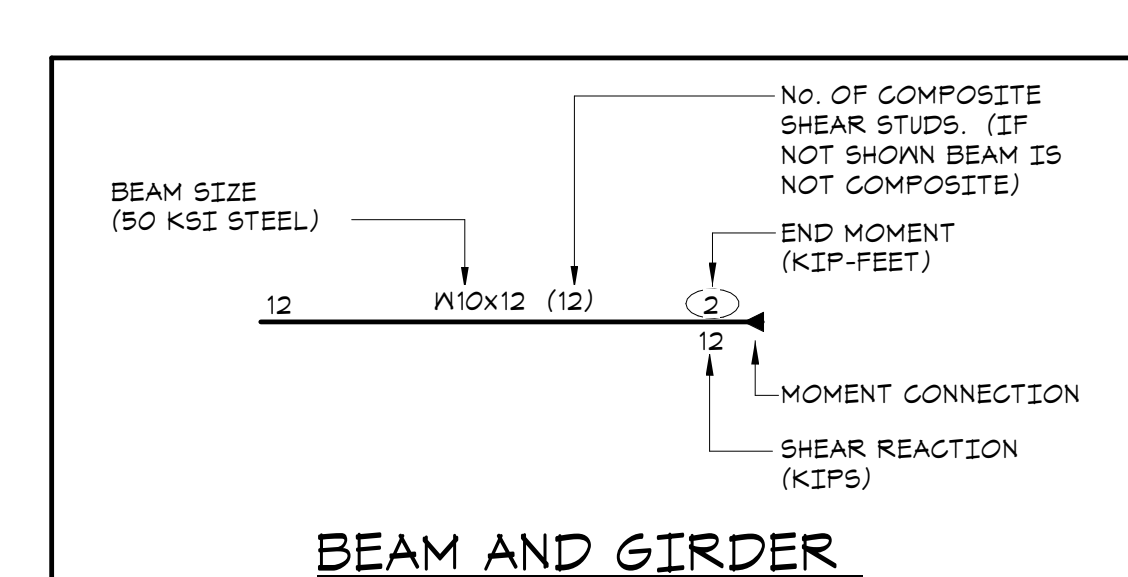
OWNERSHIP, USE AND ALTERATION OF DOCUMENTS:

The Client acknowledges that the documents, drawings, specifications including electronic master files are instruments of The DiSalvo Engineering Group's services and shall remain the property of The DiSalvo Engineering Group. The Client or any person or entity that acquires or obtains the drawings and specifications from or through The Client shall not use them on any other project, shall not modify, alter or change the drawings and specifications without written authorization from The DiSalvo Engineering Group. Furthermore, The Client agrees to the fullest extent permitted by law to indemnify and hold harmless The DiSalvo Engineering Group, its officers, directors and employees from any and all claims, suits, liability, demands or costs, including attorney fees arising out of or resulting therefrom.



THIRD FLOOR FRAMING PLAN
1/8"=1'-0"

- TOP OF THIRD FLOOR ELEVATION: 26'-8" ABOVE DATUM.
- TOP OF STEEL (UNDERSIDE OF DECK) ELEVATION: 26'-2 1/2" UNLESS OTHERWISE NOTED THUS [1'-X'-XX"] FROM ELEVATION 26'-2 1/2".
- FLOOR CONSTRUCTION: 5 1/2" COMPOSITE CONCRETE SLAB + 3 1/2" NORMAL WEIGHT CONCRETE ON 2" COMPOSITE DECK REINFORCED WITH 6x6-1/4x1/4 WVF AS PER "TYPICAL COMPOSITE BEAM FLOOR CONSTRUCTION DETAIL" AND GENERAL NOTES.
- ROOF CONSTRUCTION: METAL ROOF DECK, SEE GENERAL NOTES.
- PLATFORM FRAMING FOR STAIR A & B IS TO BE INSTALLED WITH STRUCTURAL STEEL. THE PLATFORM PROVIDES STABILITY FOR THE BUILDING COLUMNS.
- STEEL FRAMING TO BE COATED WITH FIRE RESISTIVE MATERIAL, REFER TO PROJECT SPECIFICATIONS.
- ALL FRAMING SHALL BE EQUALLY SPACED BETWEEN COLUMN LINES, UNLESS OTHERWISE INDICATED.
- COORDINATE SIZE AND LOCATION OF ALL FLOOR PENETRATIONS WITH ARCHITECTURAL, MECHANICAL, AND ELECTRICAL DRAWINGS. ALL FLOOR PENETRATIONS SHALL BE REVIEWED BY THE ENGINEER PRIOR TO FABRICATION AND INSTALLATION OF PENETRATION FRAMING ELEMENTS. PROVIDE FRAMING AS INDICATED IN "TYPICAL ROOF/FLOOR OPENING DETAIL". DO NOT SCALE OPENINGS.
- "WPA" INDICATES HSS 4x4x3/8 WIND POST ABOVE.
- "PA" INDICATES HSS 4x3x3/8 POST ABOVE.
- "HBL" INDICATES HSS HANGER BELOW.
- SLAB SHALL BE FULLY COMPOSITE BEFORE INSTALLING VENEER.
- SEE GENERAL NOTES FOR ADDITIONAL INFORMATION.



NOTE: ALL LOCAL, REGIONAL, STATEMENTS AND PLANS INDICATED OR REPRESENTED BY THIS DRAWING ARE OWNED BY AND ARE THE PROPERTY OF ARCHITECTS AND ENGINEERS. ANY REUSE OR MODIFICATION OF THIS DRAWING FOR USE ON THIS PROJECT, OR ANY OTHER PROJECT, WITHOUT THE WRITTEN PERMISSION OF THE ARCHITECTS AND ENGINEERS IS STRICTLY PROHIBITED.

WRITTEN DIMENSIONS ON THIS DRAWING SHALL HAVE PRECEDENCE OVER SCALED DIMENSIONS. CONTRACTOR SHALL VERIFY ALL ACTUAL DIMENSIONS AND CONDITIONS ON THE JOB AND THE ARCHITECT MUST BE NOTIFIED OF ANY VARIATIONS FROM DIMENSIONS AND CONDITIONS SHOWN. DIMENSIONS MUST BE SUBMITTED TO THIS OFFICE FOR APPROVAL BEFORE PROCEEDING WITH FABRICATION.

ALTERATIONS BY ANY PERSON IN ANY WAY OF ANY ITEM CONTAINED ON THIS DOCUMENT, UNLESS ACTING UNDER THE DIRECTION OF THE LICENSED ARCHITECT OR ENGINEER, SHALL BE AT THE USER'S RISK AND IN VIOLATION OF TITLE 16, SECTION 26-3.1 OF THE NEW YORK STATE LAW. COPYRIGHT 2020, KG+D ARCHITECTS & ENGINEERS, PC. ALL RIGHTS RESERVED.

No.	Date	Issue
4	11/01/21	ISSUE FOR BID
3	07/14/21	CONSTRUCTION DOCS - NYSED
2	12/15/20	DESIGN DEVELOPMENT
1	08/31/20	SCHEMATIC DESIGN

Job No.	20142.00	Date	10/30/2020
Scale	AS NOTED	Eng'n'r / Checked	TM / EM
Sheet Number	S103		