

**NEW COMMUNITY SCHOOL 35 AT ST DENIS SITE**

YONKERS JOINT SCHOOL CONSTRUCTION BOARD

121 McLean Avenue,  
Yonkers, NY 10705



KG+D . ARCHITECTS PC  
285 MAIN STREET MOUNT KISCO, NEW YORK, 10589  
P:914.666.5900 KGDARCHITECTS.COM



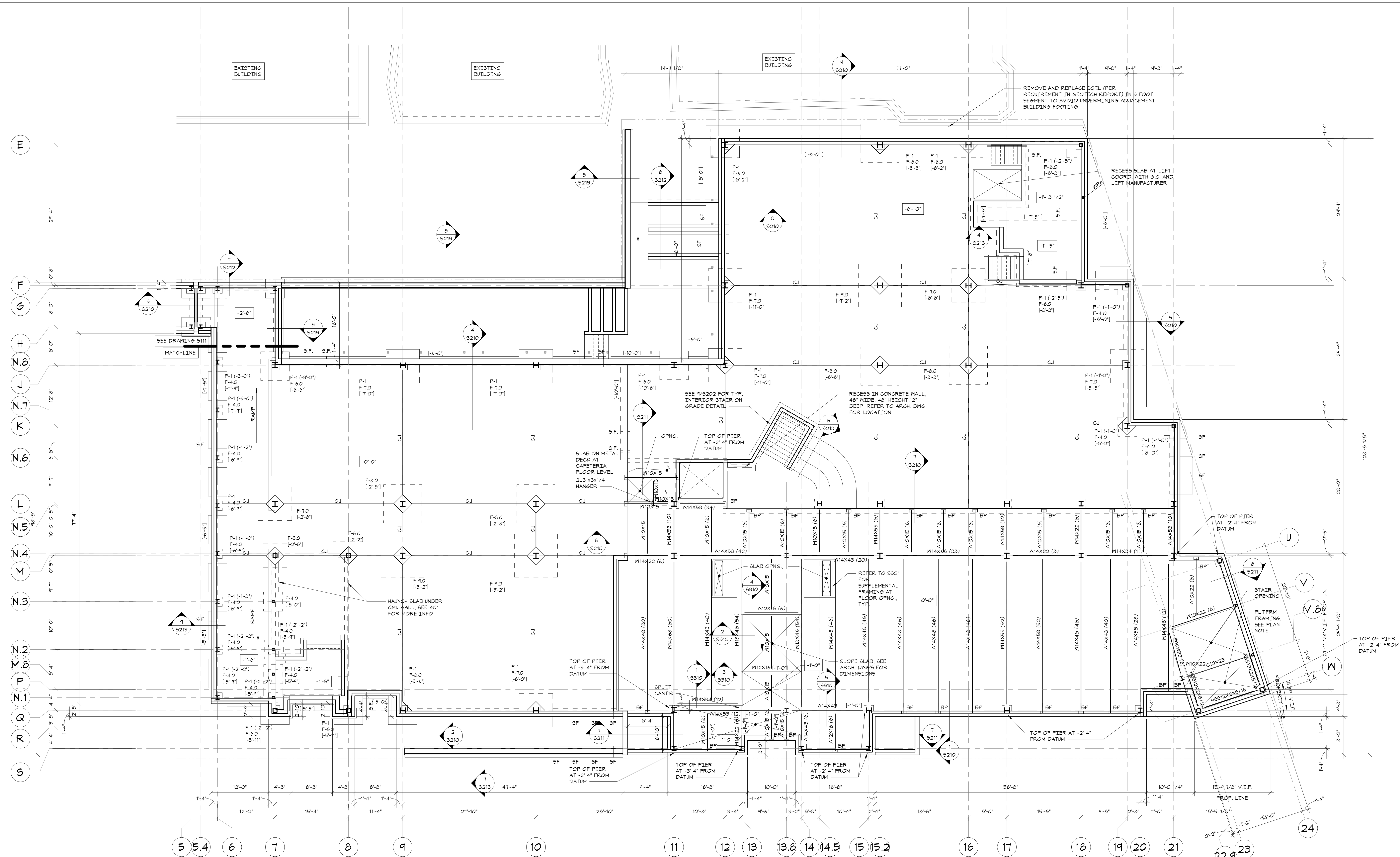
83 Wooster Heights Road | Suite 200  
Leaf Farm Corporate Park | Danbury, CT 06810  
(203) 490-1140 | www.dsleg.com

NY SED PROJECT CONTROL NO.  
**66-23-00-01-0-346-001**

**CONSTRUCTION DOCUMENTS**

**OWNERSHIP, USE AND ALTERATION OF DOCUMENTS:**

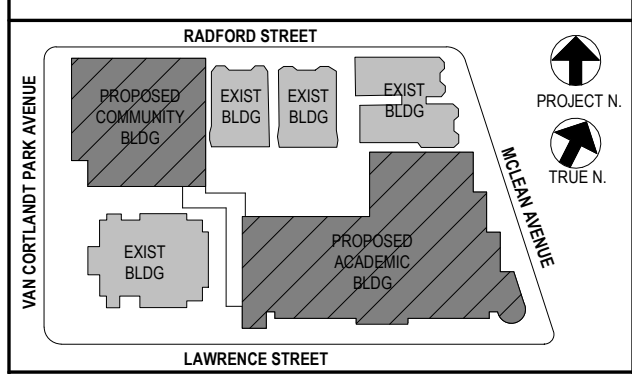
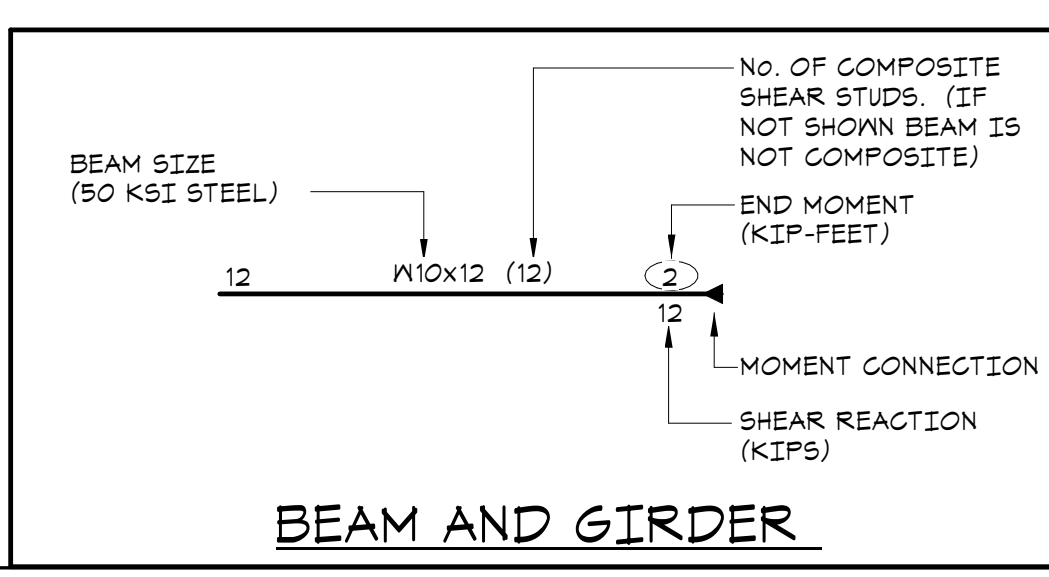
The Client acknowledges that the documents, drawings, specifications including electronic media files are instruments of the Di Salvo Engineering Group's services and shall remain the property of the Di Salvo Engineering Group. The Client or any person or entity that acquires or obtains the drawings and specifications from or through the Client shall not use them on any other project, shall not modify, alter or change the drawings and specifications without written authorization from the Di Salvo Engineering Group. Furthermore, the Client agrees to the fullest extent permitted by law to indemnify and hold harmless the Di Salvo Engineering Group, its officers, directors and employees from any and all claims, suits, liability, demands or costs, including attorney fees arising out of or resulting therefrom.



**PART. FOUNDATION AND FIRST FLOOR SLAB-ON-GRADE PLAN**

- TOP OF FIRST FLOOR ELEVATION = DATUM ELEVATION 0'-0" = TOPOGRAPHICAL ELEVATION = 82.2'
- TOP OF CAFETERIA FLOOR ELEVATION -6'-0" FROM DATUM ELEV.
- SLAB ON GRADE CONSTRUCTION: 5" CONCRETE SLAB ON GRADE REINFORCED WITH #6 - W14X14 WELDED WIRE FABRIC, UNLESS OTHERWISE NOTED. FOR DETAILS, SEE "TYPICAL SLAB ON GRADE DETAILS".
- SLAB ON METAL DECK CONSTRUCTION: 5 1/2" COMPOSITE CONCRETE SLAB = 3 1/2" LIGHT WEIGHT CONCRETE ON 2" COMPOSITE DECK REINFORCED WITH #6-W14X14 WWF AS PER "TYPICAL COMPOSITE BEAM FLOOR CONSTRUCTION DETAIL" AND GENERAL NOTES.
- PLATFORM FRAMING FOR STAIR A 4 B IS TO BE INSTALLED WITH STRUCTURAL STEEL. THE PLATFORM PROVIDES STABILITY FOR THE BUILDING COLUMNS.
- STEEL FRAMING TO BE COATED WITH FIRE RESISTIVE MATERIAL, REFER TO PROJECT SPECIFICATIONS.
- FOR FOUNDATION CONDITION AT EXTERIOR DOORS, SEE "TYPICAL DETAIL AT EXTERIOR DOORS".
- COORDINATE ALL PITS, TRENCHES, POCKETS, BRICK SHELVES, SLEEVES, PENETRATIONS AND INSERTS IN CONCRETE WALLS AND SLABS WITH ARCHITECTURAL AND MECHANICAL DRAWINGS.
- ALL EXPOSED CONCRETE SHALL RECEIVE SMOOTH ARCH. FINISH.
- SEE GENERAL NOTES, FOR ADDITIONAL INFORMATION.

- LEGEND:**
- (1'-...') INDICATES BOTTOM OF FOOTING ELEVATION FROM TOP OF FIRST FLOOR CONCRETE SLAB DATUM ELEVATION.
  - (1'-...') INDICATES TOP OF CONCRETE SLAB ELEVATION FROM TOP OF FIRST FLOOR CONCRETE SLAB DATUM ELEVATION. MAINTAIN FULL SLAB THICKNESS AT SLOPED AND DEPRESSED AREAS. SEE ARCHITECTURAL DRAWINGS FOR LOCATION AND EXTENT.
  - (1'-...') INDICATES TOP OF PIER ELEVATION FROM TOP OF DATUM ELEVATION.
  - "SF" INDICATES APPROXIMATE LOCATION OF STEPS IN FOOTINGS ON PLAN. COORDINATE LOCATION AND ELEVATION WITH SITE GRADING AND MECHANICAL, ELECTRICAL AND PLUMBING DRAWINGS. FOR DETAILS, SEE "TYPICAL STEPPED FOOTING DETAIL".
  - "CJ" INDICATES APPROXIMATE LOCATION OF CONTROL/CONSTRUCTION JOINTS IN SLABS ON GRADE. FOR DETAILS, SEE "TYPICAL SLAB ON GRADE DETAILS".
  - "F-##" INDICATES FOOTING TYPE. SEE "FOOTING SCHEDULE AND FOOTING DETAIL".
  - "P-#" INDICATES PIER TYPE. SEE "PIER SCHEDULE AND PIER DETAILS".
  - "BP" INDICATES BEARING POCKET. SEE 5402 FOR TYPICAL BEARING POCKET DETAIL.



NOTE: ALL IDEAS, SPECIAL ARRANGEMENTS AND PLANS INDICATED OR REPRESENTED BY THIS DRAWING ARE OWNED BY AND ARE THE PROPERTY OF ARCHITECTS AND ENGINEERS ARCHITECTS PC (A/E/C) AND WILL BE USED FOR USE ON THIS PROJECT. NONE OF SUCH IDEAS, SPECIAL ARRANGEMENTS OR PLANS SHALL BE USED BY OR DISCLOSED TO ANY PERSON WHATSOEVER WITHOUT THE WRITTEN PERMISSION OF A/E/C.

WRITTEN DIMENSIONS ON THIS DRAWING SHALL HAVE PRECEDENCE OVER SCALE DIMENSIONS. CONTRACTOR SHALL VERIFY ALL ACTUAL DIMENSIONS AND CONDITIONS ON THE JOB AND THE ARCHITECT MUST BE NOTIFIED OF ANY VARIATIONS FROM DIMENSIONS AND CONDITIONS BEFORE PROCEEDING WITH FABRICATION.

ALTERATIONS BY ANY PERSON IN ANY WAY OF ANY ITEM CONTAINED ON THIS DOCUMENT, UNLESS ACTING UNDER THE DIRECTION OF THE LICENSED ARCHITECT OR ENGINEER, SHALL BE AT THE USER'S RISK AND IN VIOLATION OF TITLE 16, SECTION 8-01 OF NEW YORK STATE LAW. COPYRIGHT 2020, ARCHITECTS AND ENGINEERS ARCHITECTS PC. ALL RIGHTS RESERVED.

Professional Seal

No.	Date	Issue
4	11/01/21	ISSUE FOR BID
3	07/14/21	CONSTRUCTION DOCS - NYSED
2	12/15/20	DESIGN DEVELOPMENT
1	08/31/20	SCHEMATIC DESIGN

FIRST FLOOR FOUNDATION AND SLAB-ON-GRADE PLAN	
Job No.	20142.00
Date	10/30/2020
Scale	AS NOTED
Engr'n / Checked	TM / EM
Sheet Number	<b>S101</b>