

NOTE: ALL IDEAS, DESIGN ARRANGEMENTS AND PLAN REVISIONS OR REPRESENTED BY THIS DRAWING ARE OWNED BY AND ARE THE PROPERTY OF ARCHITECTS / ENGINEERS / DESIGNERS / CONSULTANTS / ARCHITECTS / ENGINEERS / DESIGNERS / CONSULTANTS / ARCHITECTS / ENGINEERS / DESIGNERS / CONSULTANTS. ANY REVISIONS MUST BE NOTIFIED OF ANY VARIATIONS FROM ORIGINALS AND CONDITIONS SHOWN BY THESE DRAWINGS. SHOP DETAILS MUST BE SUBMITTED TO THE ARCHITECT FOR REVIEW AND APPROVAL BEFORE PROCEEDING WITH FABRICATION.

Professional Seal

No.	Date	Issue
5	11/01/2021	ISSUE FOR BID
4	08/24/2021	NYSED ADDENDUM 1
3	07/14/2021	CONST. DOCS - FOR NYSED
2	12/15/2020	DESIGN DEVELOPMENT
1	08/31/2020	SCHEMATIC DESIGN

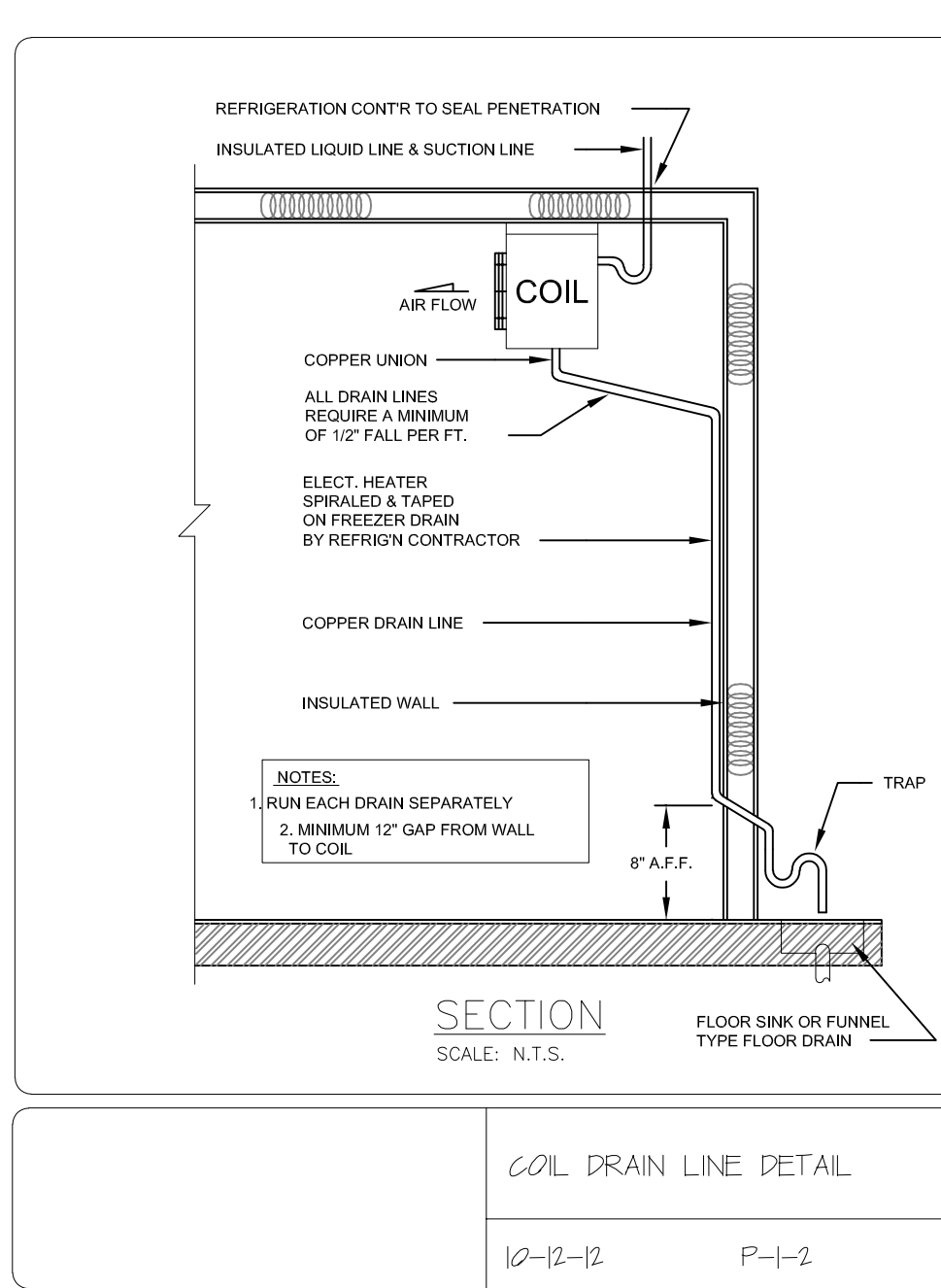
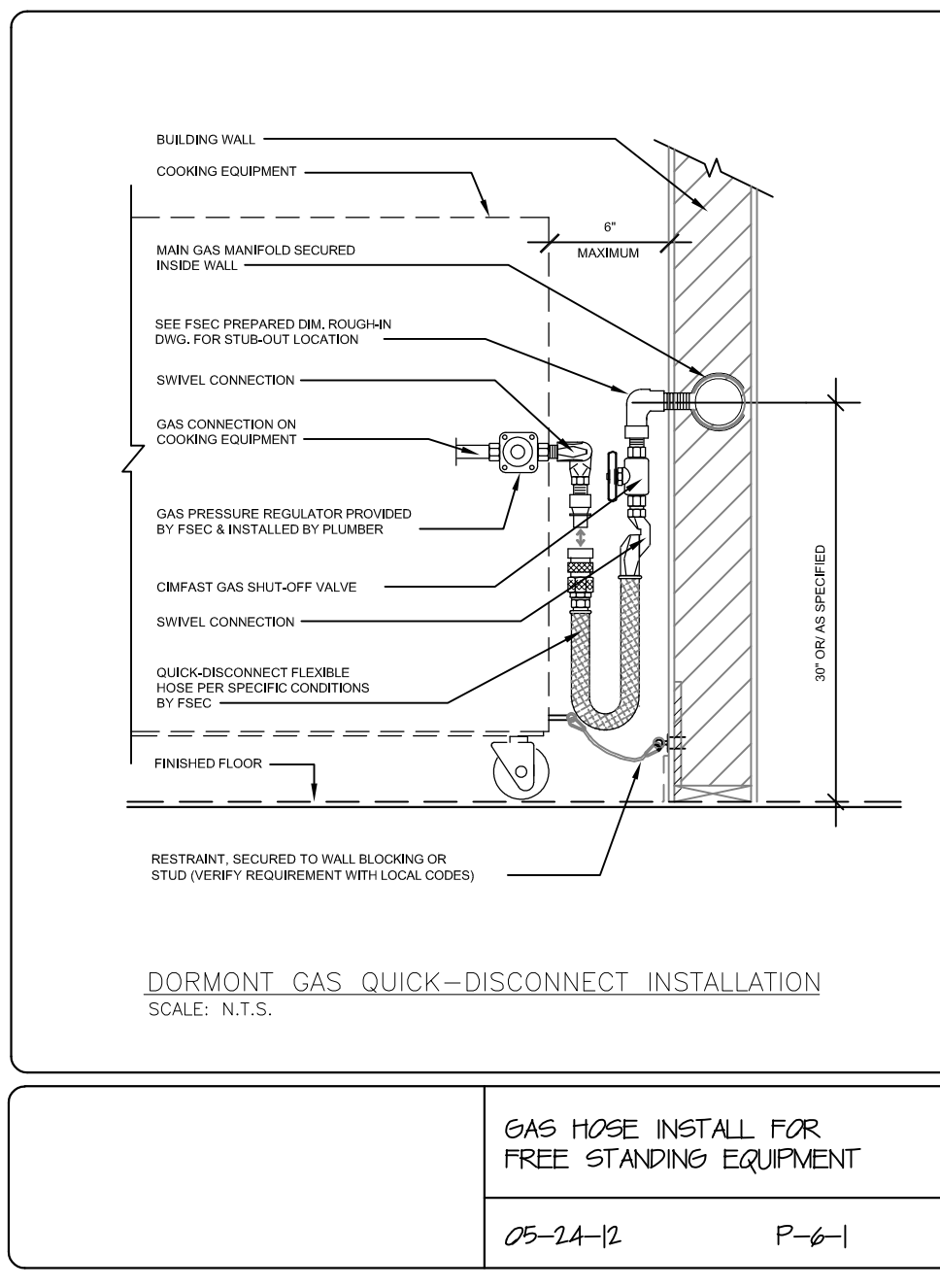
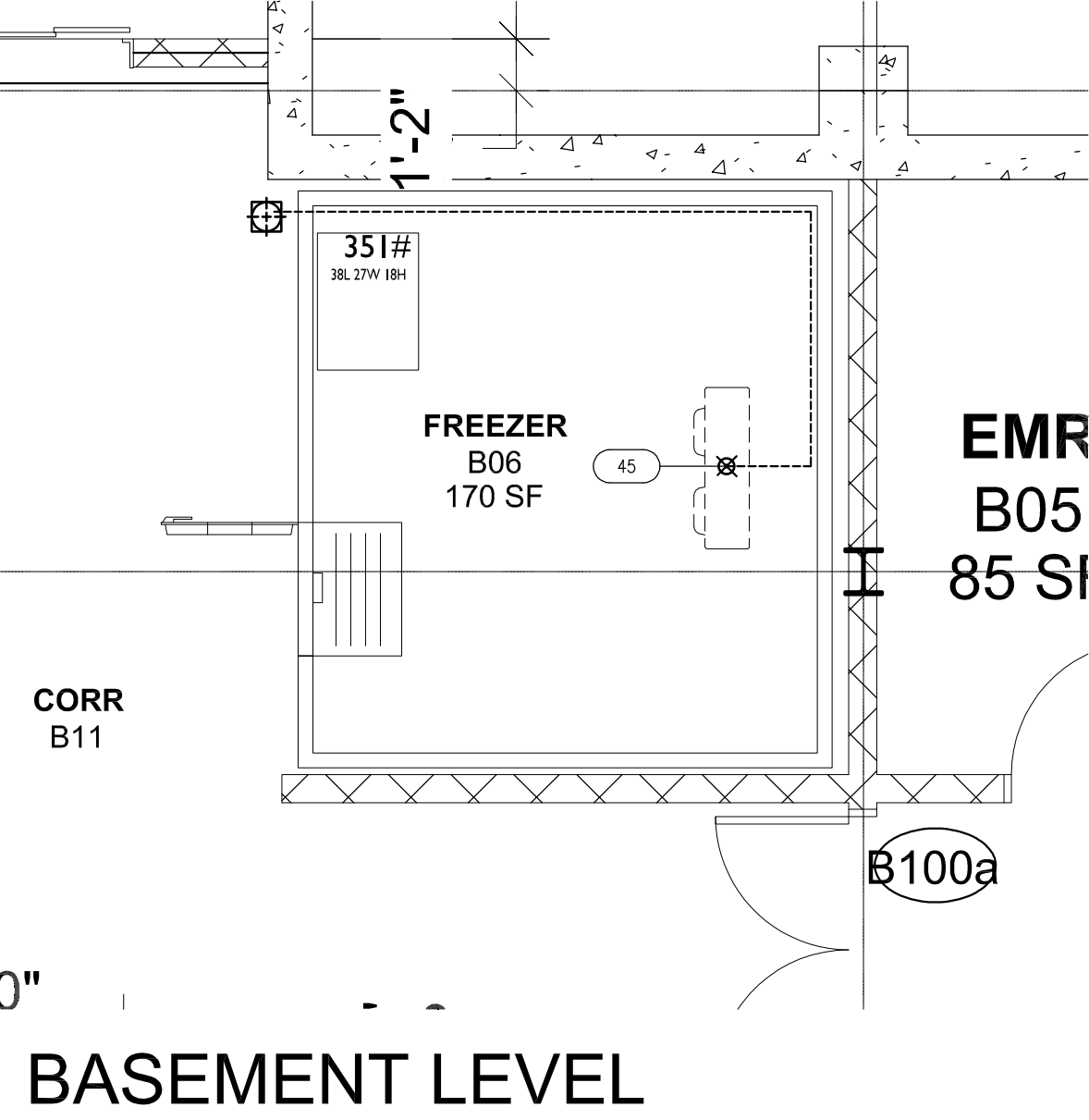
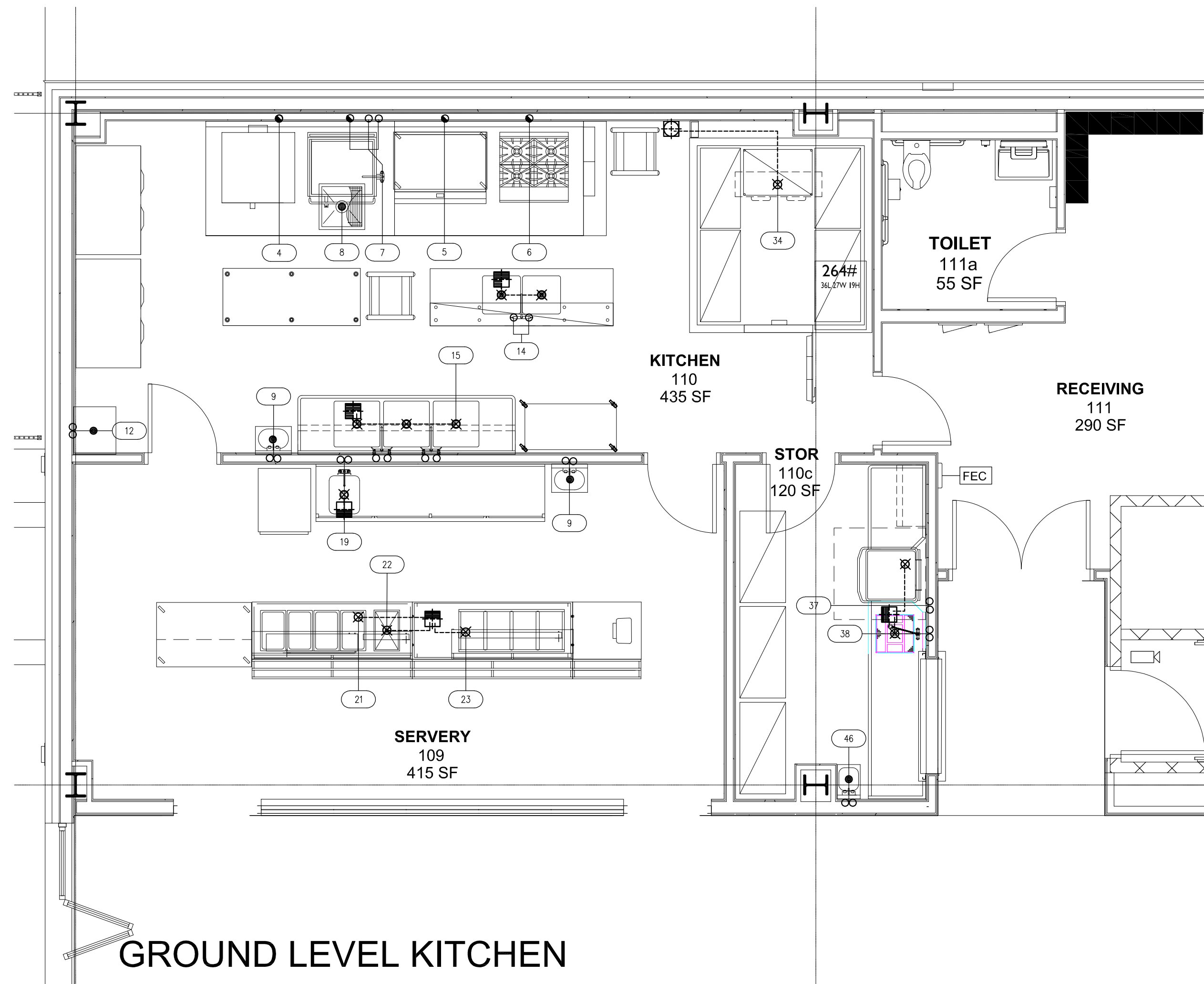
Sheet Title

KITCHEN PLUMBING PLAN

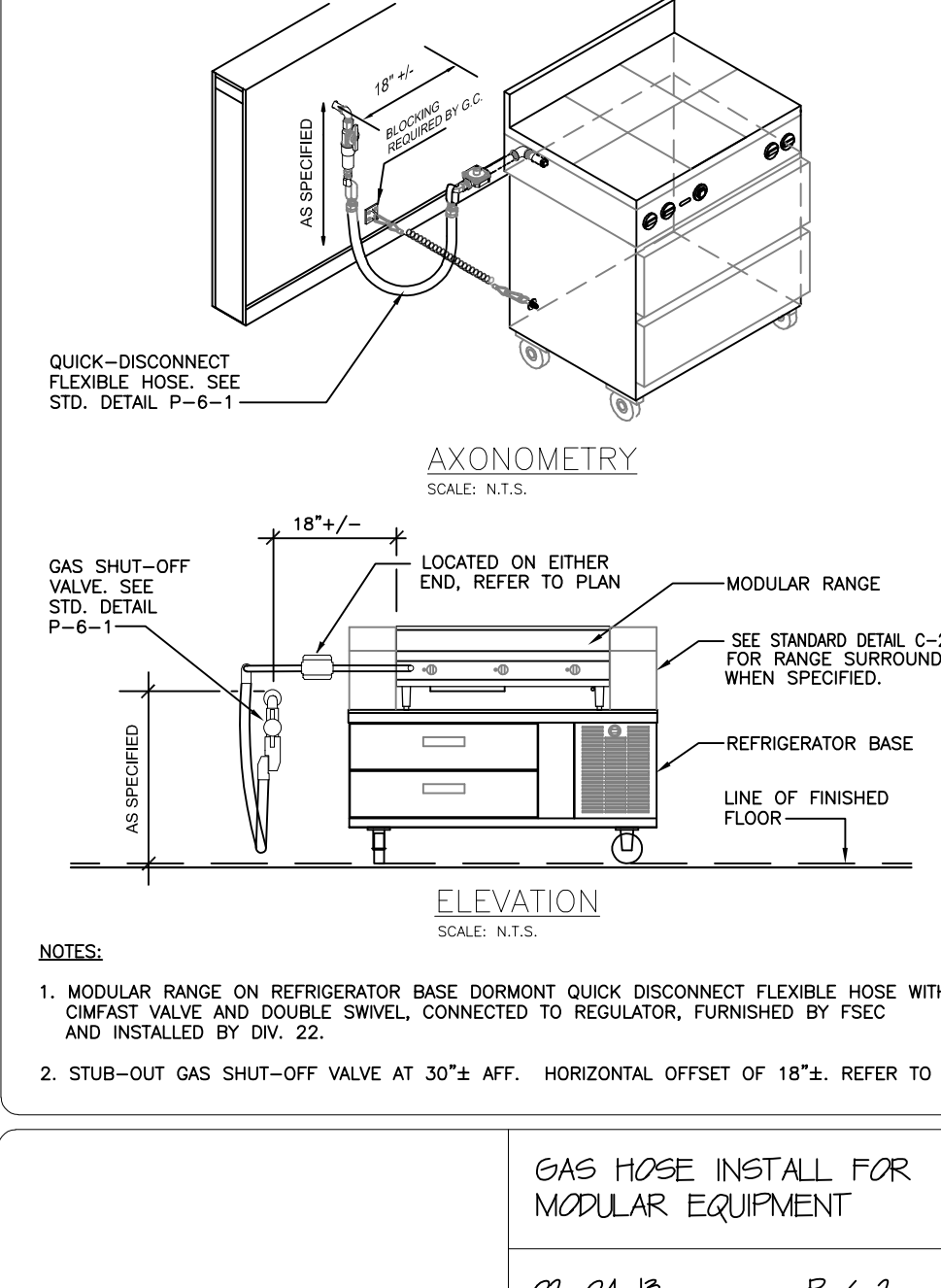
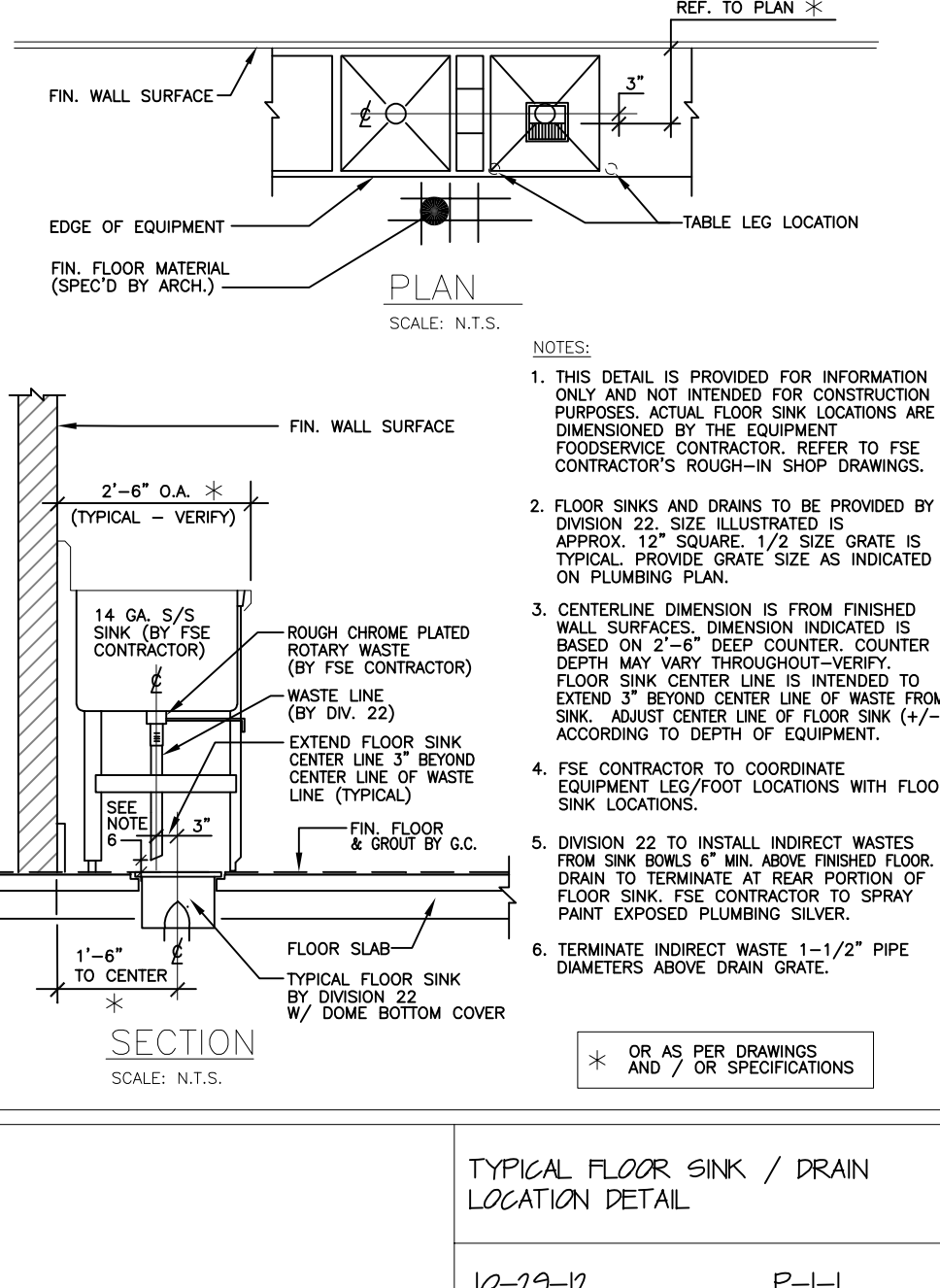
Job No. 2019-1026 Date 06-24-21
 Scale: 1/4" = 1'-0" Drawn / Checked --

Sheet No. KA-2

ITEM NO	QTY	ITEM NAME	CW	CW AFF	HW	HW AFF	110' (GPH)	140' (GPH)	SINK SIZE	IV	DW	DIRECT WASTE CONN. HEIGHT(N)	FW	GAS MBTU	GAS	GAS AFF	REMARKS	ITEM NO	
4	1	CONVECTION OVEN, DOUBLE, GAS												55.0	3/4"	30"	P9	4	
5	1	GAS COUNTERTOP GRIDDLE												55.0	3/4"	30"	P9	5	
6	1	RANGE, 4 OPEN BURNERS												190.0	1"	30"	P9	6	
7	1	TILTING SKILLET BRAISING PAN, GAS	1/2"	24"	1/2"	24"								91.0	3/4"	30"	P9, P10	7	
8	1	FLOOR TROUGH															P13	8	
9	2	HAND SINK	1/2"		1/2"		5 EA	14X16X8		1-1/2"		4"							9
12	1	MOP SINK CABINET	1/2"		1/2"			16X20X8				2"							12
14	1	TABLE W/SINKS	1/2"		1/2"			20 EA 2X20X20X12	1-1/2"										14
15	1	THREE (3) COMPARTMENT SINK	1/2"	14"	1/2"	14"		30 EA (3) 24X24X14	(3) 2"										15
19	1	WORK TABLE W/SINK	1/2"		1/2"			20 16X20X10	2"										19
21	1	SERVING COUNTER, HOT FOOD, ELECTRIC																	21
22	1	COLD FOOD WELL UNIT, DROP-IN, REFRIGERATED																	22
23	1	SERVING COUNTER, COLD FOOD																	23
34	1	REFRIGERATION COIL, MED TEMP																	34
37	1	DISHWASHER, DOOR TYPE (FUTURE)	1/2"		3/4"			43		1-1/2"									37
38	1	SOLED DISHTABLE (FUTURE)	1/2"		1/2"			20 20X20X7	2"										38
45	1	EVAPORATOR COIL, LOW TEMPERATURE																	45
46	1	HAND SINK	1/2"	18"	1/2"	18"	1/2"	18"	9X13X6	3/4"	1-1/2"	24"							46



- PLUMBING NOTES**
- PLUMBING PLAN SHOWS ROUGH-IN AND CONNECTION LOCATIONS WITH CAPACITIES - SEE ROUGH-IN DRAWINGS FURNISHED BY THE FOOD SERVICE EQUIPMENT CONTRACTOR FOR ACTUAL ROUGH-IN LOCATIONS
 - ROUGH-INS FOR WATER, WASTE, FUEL, GAS AND STEAM SERVICES SHALL EXTEND 4" (102 MM) BEYOND SCHEDULE WALLS AND ABOVE FINISH FLOORS OR EQUIPMENT FLOORS - ALL FLOOR PENETRATIONS SHALL BE SEALED WATER TIGHT
 - WATER PRESSURE IN FOOD, SERVICE AND BEVERAGE AREAS SHOULD BE 50 PSIG (344.750N/M²) MAXIMUM - WATER PRESSURE AT DISHWASHERS, BOOSTER HEATERS, GLASS AND UTENSIL WASHERS TO BE 20 PSIG (137.90N/M²)
 - STEAM PRESSURE FOR FOOD SERVICE EQUIPMENT TO BE N/A UNLESS INDICATED OTHERWISE ON PLAN
 - DIVISION 22 SHALL FURNISH AND INSTALL ALL NECESSARY VALVES, TRAPS, TAIL PIECES, LINE STRAINERS, PRESSURE REDUCING VALVES AND VACUUM BREAKERS AND CONNECT ALL WATER, FUEL GAS, STEAM AND WASTE LINES TO FOOD SERVICE EQUIPMENT
 - DIVISION 22 TO PROVIDE GAS SERVICES AT EQUIPMENT TO MAINTAIN AN 8" WATER COLUMN, FOOD SERVICE EQUIPMENT CONTRACTOR TO PROVIDE GAS PRESSURE REGULATORS AS REQUIRED BY CODE AND A.G.A. FOR INSTALLATION BY DIVISION 22 IN LINE BETWEEN BUILDING SERVICES AND EQUIPMENT
 - DIVISION 22 SHALL INSTALL & CONNECT ALL FAUCETS AND DRAINS FURNISHED WITH FOOD SERVICE AND BEVERAGE EQUIPMENT
 - DIVISION 22 SHALL FURNISH & INSTALL ALL INDIRECT WASTE LINES FROM FOOD SERVICE AND BEVERAGE EQUIPMENT (EXCEPT EVAPORATOR COILS IN COLD STORAGE ROOMS) TO FLOOR SINKS AND INSULATE WASTE LINES FROM ICE SINKS, EVAPORATORS AND BATH MARIES
 - FOOD SERVICE EQUIPMENT CONTRACTOR SHALL FURNISH & INSTALL FIRE SUPPRESSION SYSTEM, FIRE CONTRACTOR SHALL FURNISH & DIVISION 22 SHALL INSTALL, NORMALLY OPEN, MECHANICALLY ACTIVATED OR ELECTRICAL SOLENOID GAS SHUT-OFF VALVE ABOVE SUSPENDED CEILING TILE
 - WHERE PERMITTED BY LOCAL CODE, FLOOR SINKS SHALL BE INSTALLED FLUSH WITH FINISH FLOOR WITH GRATE COVER AS INDICATED
 - THIS PLUMBING PLAN IS INTENDED TO SHOW DRAINAGE REQUIREMENTS FOR FOODSERVICE EQUIPMENT ONLY; IT IS THE PLUMBING ENGINEER'S RESPONSIBILITY TO CONFIRM DRAIN TYPE, CAPACITY & ELEVATION TO SATISFY LOCAL CODE REQUIREMENTS
 - SEWAGE AND LIQUID WASTES (ROOF DRAINS) ARE TO BE CARRIED TO THE SEWER IN A MANNER THAT PROTECTS THE PRECESSES, THE PERSONS AND CONTENTS WITHIN THE ESTABLISHMENT FROM CONTAMINATION, THE PLUMBING ENGINEER IS TO DESIGN WASTE PIPING SYSTEMS THAT CONFORM TO LOCAL HEALTH CODE REQUIREMENTS, PARTICULAR ATTENTION NEEDS TO BE GIVEN TO ANY LOCAL REQUIREMENTS PREVENTING WASTE PIPING (EXPOSED OR CONCEALED) FROM BEING ROUTED OVERHEAD IN AREAS USED FOR FOOD STORAGE, PREPARATION, SERVICE, WASHING AND TRANSPORTATION
 - GENERAL PURPOSE AREA DRAINS SHALL BE LOCATED AND SPECIFIED BY THE PLUMBING ENGINEER TO PREVENT STANDING WATER ON THE FLOOR, THIS IS OF PARTICULAR IMPORTANCE WHEN LOCAL CODES REQUIRE THAT DRAINS ACCEPTING INDIRECT WASTE BE SET ABOVE THE FINISHED FLOOR
 - DIVISION 22 TO RUN WASTES TO GREASE INTERCEPTOR PER LOCAL CODES; GREASE INTERCEPTOR, IF REQUIRED, IS TO BE SIZED AND LOCATED BY THE PLUMBING ENGINEER, WASTE ROUGH-IN FOR DISCHARGE PIPING FROM A SURFACE MOUNTED GREASE INTERCEPTOR IS TO BE DIMENSIONED BY THE PLUMBING ENGINEER
 - DIVISION 22 SHALL INSTALL WATER FILTER SYSTEMS PROVIDED BY THE FOOD SERVICE EQUIPMENT CONTRACTOR TO SERVICE ICE MAKERS, COFFEE MAKERS/GRINDERS, SOAK SYSTEMS, STEAMERS, ETC.
 - FOOD SERVICE EQUIPMENT CONTRACTOR TO PROVIDE, DIVISION 22 TO INSTALL, FLEXIBLE CONNECTORS FOR FOOD SERVICE & BEVERAGE EQUIPMENT REQUIRING GAS, WATER & STEAM CONNECTIONS, REFER TO PLUMBING SCHEDULE AND CONTRACT DOCUMENTS



- PLUMBING REMARKS LEGEND**
- NOTE: THESE REMARKS ARE APPLICABLE WHEN NOTED IN THE PLUMBING REMARKS COLUMN ON THE PLUMBING SCHEDULE.
- P1 CONNECT TO CENTRAL WATER FILTER.
 - P2 CONNECT TO INDIVIDUAL WATER FILTER FURNISHED BY F.S.E.C. AND INSTALLED BY PLUMBING DIVISION.
 - P3 PLUMBING DIVISION TO INSTALL NECESSARY PIPING, VALVES, ETC. TO ENABLE THE OPERATOR TO BY-PASS THE FILTER SYSTEM TEMPORARILY WHEN WATER FLOW TO FIXTURES IS RESTRICTED BY CLOGGED FILTERS.
 - P4 ROUTE INDIRECT WASTE FROM WATER FILTER PER DETAIL P-8-1.
 - P5 CONCEAL WATER FILTER IN BASE CABINET, COORDINATE LOCATION AND ACCESS FOR PLUMBING DIVISION.
 - P6 F.S.E.C. TO FURNISH AND INSTALL ELECTRIC HEAT WRAP TAP ON FREEZER EVAPORATOR COIL DRAIN LINE. ELECTRICAL DIVISION TO MAKE FINAL CONNECTIONS.
 - P7 F.S.E.C. TO EXTEND DRAIN LINE FROM INDIRECT WASTE CONNECTION AT EVAPORATOR COIL TO FLOOR DRAIN PER DETAIL P-2-1.
 - P8 CONDENSER WATER TEMPERATURE TO BE MAINTAINED AT 45° & 85° FAHRENHEIT.
 - P9 FLEXIBLE DISCONNECT(S) FURNISHED BY F.S.E.C. PER SPECIFIC CONDITIONS & INSTALLED BY PLUMBING DIVISION.
 - P10 WATER SWIVEL FLEXIBLE DISCONNECT(S) FURNISHED BY F.S.E.C. PER SPECIFIC CONDITIONS & INSTALLED BY PLUMBING DIVISION.
 - P11 F.S.E.C. TO FURNISH FLEXIBLE DISCONNECT(S) FOR EQUIPMENT UNITS PROVIDED BY OTHERS.
 - P12 F.S.E.C. TO CONFIRM PLUMBING REQUIREMENTS WITH OWNER OR OPERATOR FOR EQUIPMENT NOT IN CONTRACT.
 - P13 PLUMBING ENGINEER TO SIZE AND SPECIFY GREASE INTERCEPTOR PER LOCAL CODE. PLUMBING ENGINEER TO LOCATE FLOOR PENETRATION FOR WASTE LINE/RAIN GUT DRAIN FROM INTERCEPTOR TO SEWER SYSTEM.
 - P14 F.S.E.C. TO PROVIDE AND PLUMBING DIVISION TO INSTALL GAS SHUT OFF VALVE FOR FIRE SUPPRESSION SYSTEM. REFER TO DETAIL C-22-6.
 - P15 PLUMBING DIVISION TO PROVIDE & INSTALL INTERCONNECTING PIPING FOR A COMPLETE AND OPERABLE SYSTEM. INDIRECT WASTE TO RUN HOSE WALL PER DETAIL P-4-1. EXTEND WASTE TO GREASE TRAP PER LOCAL CODES. CHROME PLATED PIPING WHERE APPLICABLE.
 - P16 INTERLAMB CONTROL PANEL THROUGH VACUUM BREAKER & CHECK VALVE W/ EXHAUST THROUGHOUT TO END OF TROUGH, INCLUDING GUSHER HEADS.
 - P17 EXTEND DRAIN LINE FROM PRESSURE RELIEF VALVE ON BOOSTER HEATER TO FLOOR SINK.
 - P18 FURNISH & INTERLAMB RECIRCULATING WATER LINES W/ GATE VALVES FROM COLLECTOR/ TROUGH/HEATER TO END OF TROUGH, INCLUDING GUSHER HEADS.
 - P19 FURNISH & INTERLAMB RECIRCULATING WATER LINE W/ BALL VALVE FROM SYSTEM TO INLET AT END OF TROUGH.
 - P20 STUB UP INSIDE UTILITY CHASE AND BTC
 - P21 DOWN FROM ABOVE INSIDE UTILITY CHASE AND BTC

