

**DOOR CAPACITY CALCULATIONS (GENERAL)**  
 AT 36" WIDE SINGLE DOORS, 33" CLEAR EGRESS WIDTH SHALL BE PROVIDED  
 33" / 0.15' PER OCCUPANT = 220 OCCUPANT CAPACITY  
 AT 72" WIDE DOUBLE DOORS, 66" CLEAR EGRESS WIDTH SHALL BE PROVIDED  
 66" / 0.15' PER OCCUPANT = 453 OCCUPANT CAPACITY

**DOOR CAPACITY CALCULATIONS (CAFETERIA)**  
 REQUIRED: 243 OCCUPANTS X 0.15' PER OCCUPANT = 37'  
 PROVIDED: 142'

**DOOR CAPACITY CALCULATIONS (GYMNASIUM)**  
 REQUIRED: 1188 OCCUPANTS X 0.15' PER OCCUPANT = 179'  
 PROVIDED: 340'

**STAIR CAPACITY CALCULATIONS (PER LOADING SHOWN IN CC PLANS)**

**STAIR A**  
 REQUIRED: 248 OCCUPANTS X 0.2' PER OCCUPANT = 50'  
 PROVIDED: 70' (0.2' PER OCCUPANT = 350 OCCUPANT CAPACITY)

**STAIR B**  
 REQUIRED: 193 OCCUPANTS X 0.2' PER OCCUPANT = 39'  
 PROVIDED: 70' (0.2' PER OCCUPANT = 350 OCCUPANT CAPACITY)

**STAIR C**  
 REQUIRED: 175 OCCUPANTS X 0.2' PER OCCUPANT = 35'  
 PROVIDED: 70' (0.2' PER OCCUPANT = 350 OCCUPANT CAPACITY)

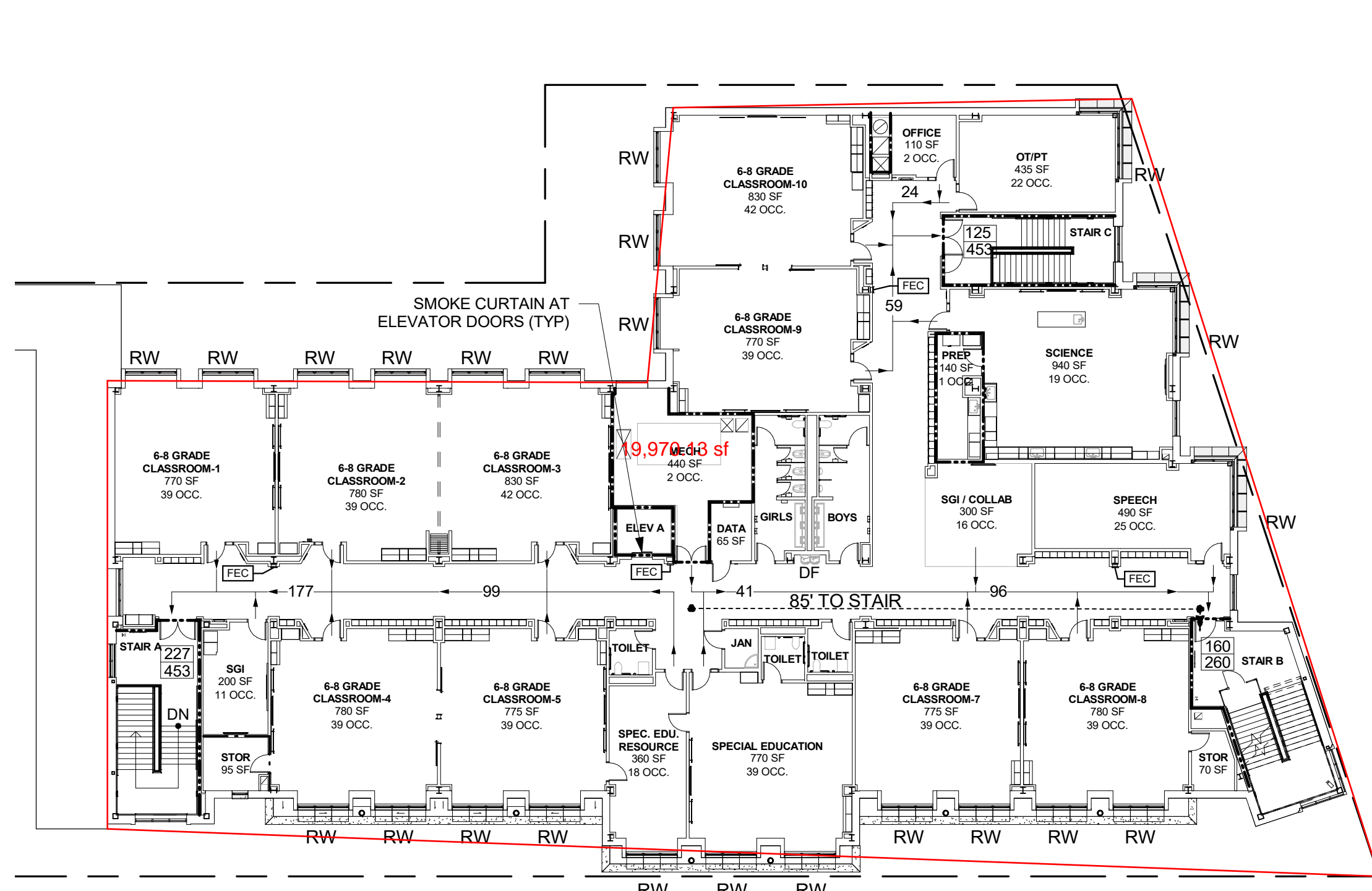
**STAIR D**  
 REQUIRED: 8 OCCUPANTS X 0.2' PER OCCUPANT = 44" (MIN ALLOWED)  
 PROVIDED: 54" (0.2' PER OCCUPANT = 270 OCCUPANT CAPACITY)

**STAIR E**  
 REQUIRED: 121 OCCUPANTS X 0.2' PER OCCUPANT = 44" (MIN ALLOWED)  
 PROVIDED: 44" (0.2' PER OCCUPANT = 220 OCCUPANT CAPACITY)

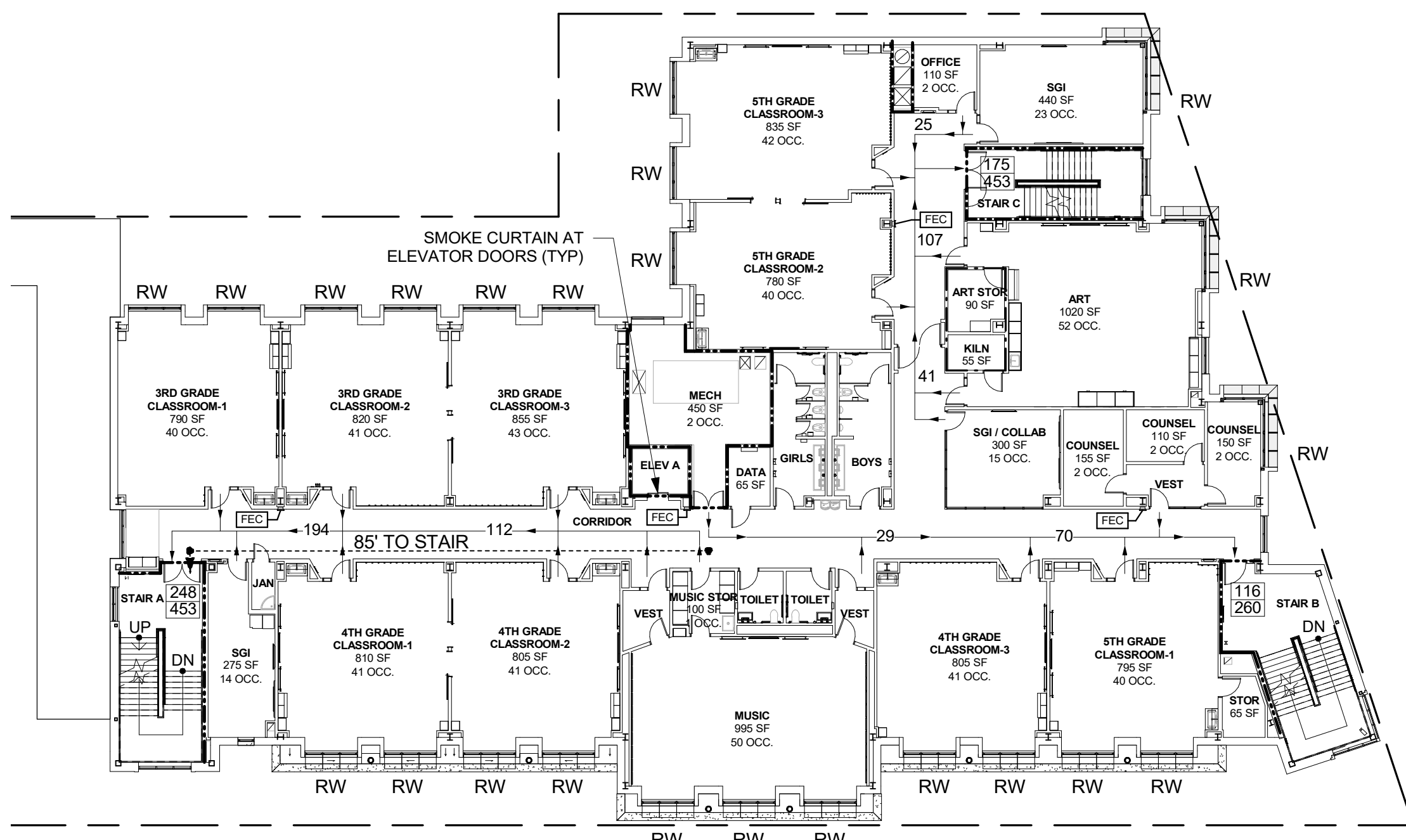
**STAIR F**  
 REQUIRED: 5 OCCUPANTS X 0.2' PER OCCUPANT = 44" (MIN ALLOWED)  
 PROVIDED: 44" (0.2' PER OCCUPANT = 220 OCCUPANT CAPACITY)

**STAIR G**  
 REQUIRED: 37 OCCUPANTS X 0.2' PER OCCUPANT = 44" (MIN ALLOWED)  
 PROVIDED: 44" (0.2' PER OCCUPANT = 220 OCCUPANT CAPACITY)

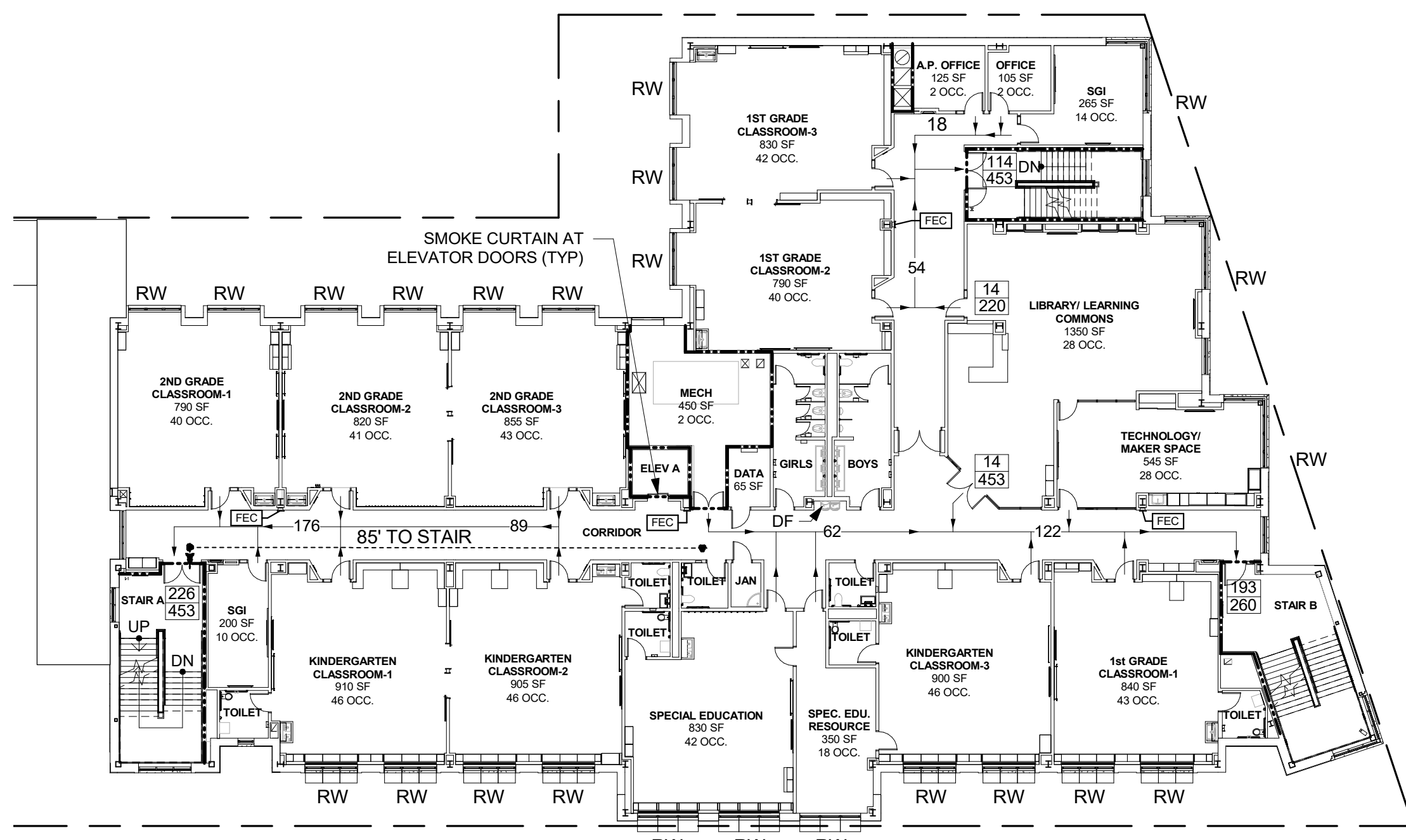
**STAIR H**  
 REQUIRED: 41 OCCUPANTS X 0.2' PER OCCUPANT = 44" (MIN ALLOWED)  
 PROVIDED: 44" (0.2' PER OCCUPANT = 220 OCCUPANT CAPACITY)



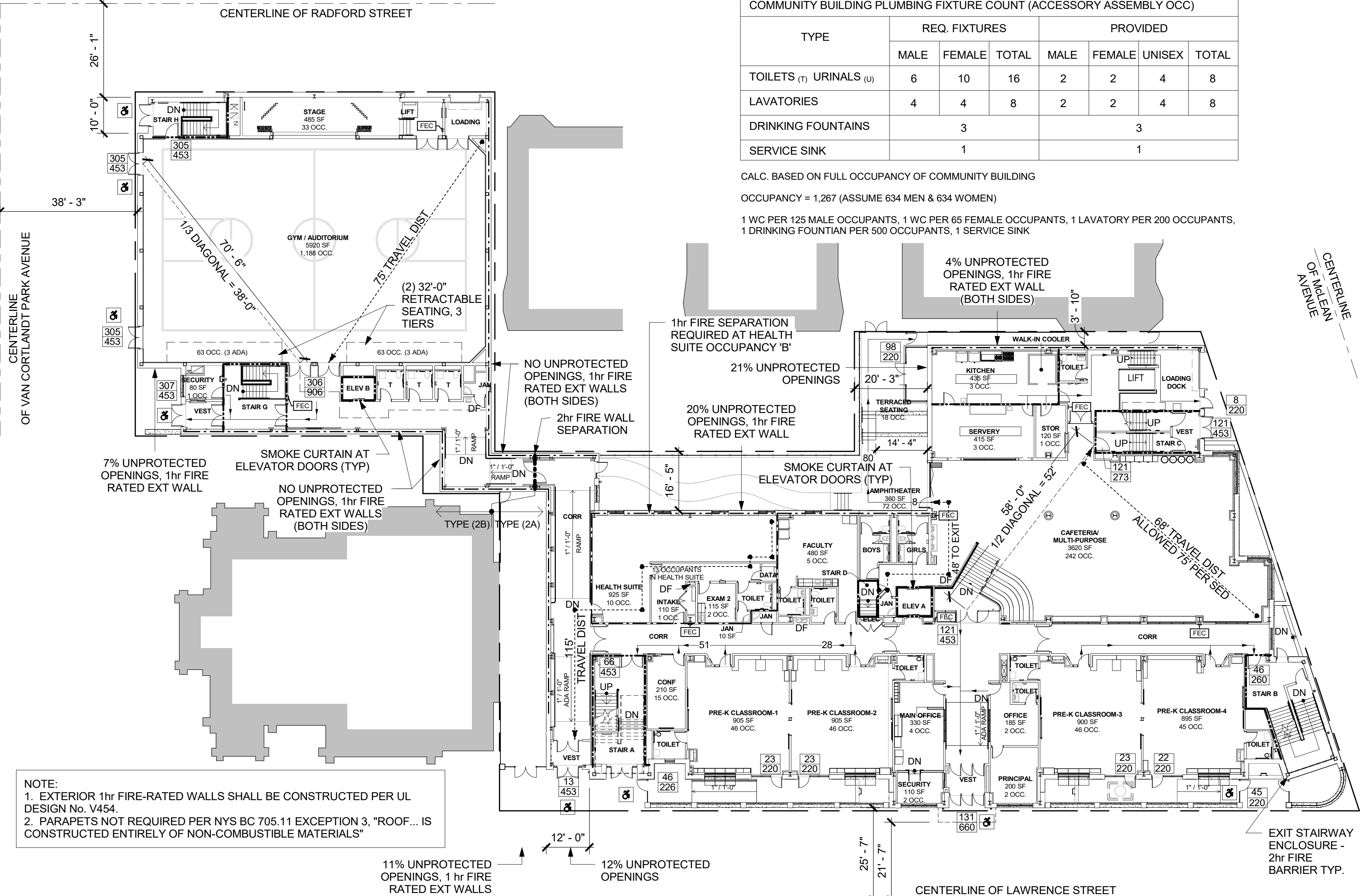
**4 CODE COMPLIANCE - 4th FLOOR PLAN**  
 1" = 20'-0"



**3 CODE COMPLIANCE - 3rd FLOOR PLAN**  
 1" = 20'-0"



**2 CODE COMPLIANCE - 2nd FLOOR PLAN**  
 1" = 20'-0"



**1 CODE COMPLIANCE - 1st FLOOR PLAN**  
 1" = 20'-0"

**HEALTH SUITE PLUMBING FIXTURE COUNT (BUSINESS OCCUPANCY)**

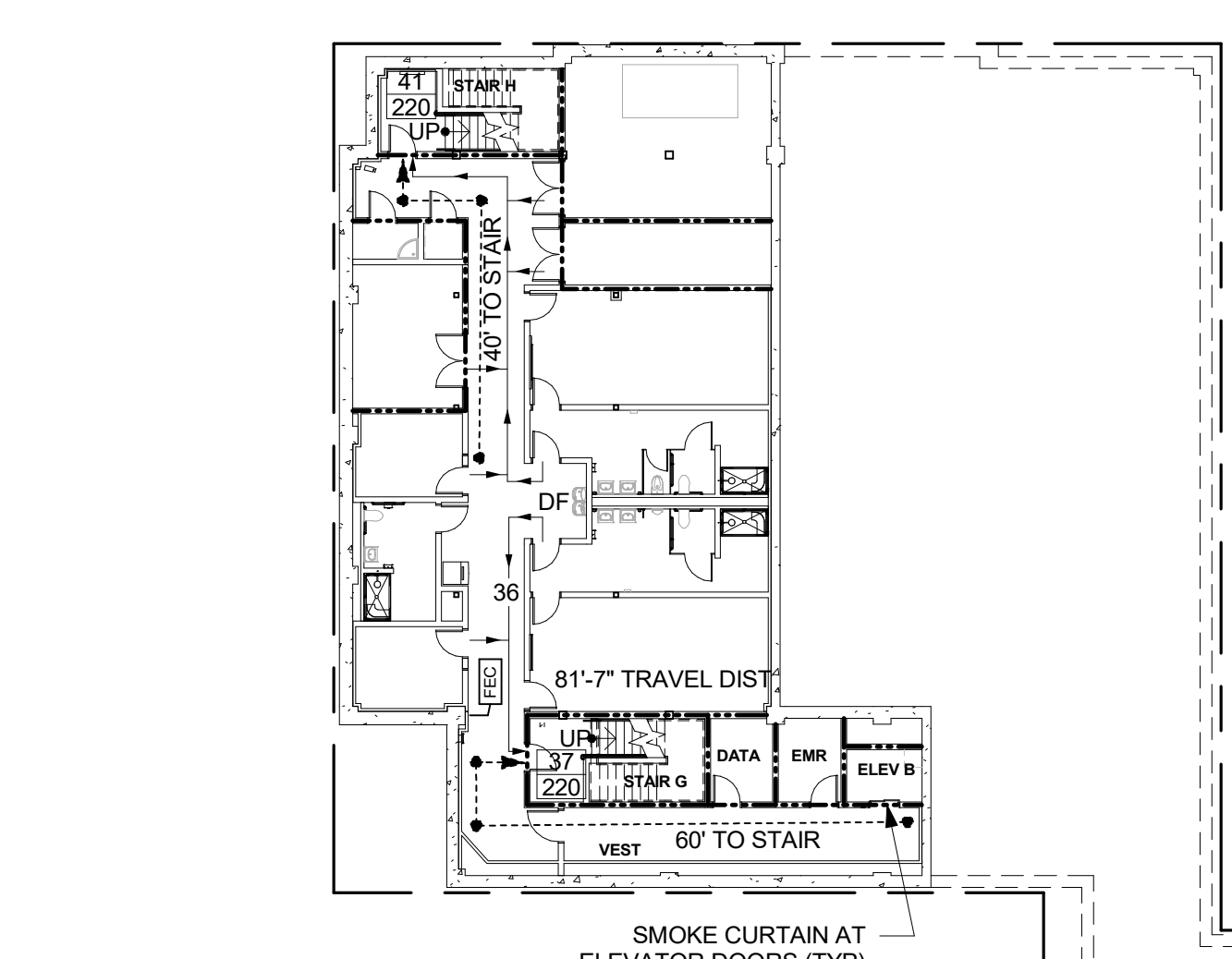
TYPE	REQ. FIXTURES			PROVIDED			
	MALE	FEMALE	TOTAL	MALE	FEMALE	UNISEX	TOTAL
TOILETS (T) URINALS (U)	-	-	1	-	-	1	1
LAVATORIES	-	-	1	-	-	1	1
DRINKING FOUNTAINS	1			1			
SERVICE SINK	1				2		2

CALC. BASED ON GROSS SQUARE FOOTAGE OF HEALTH SUITE  
 OCCUPANCY = 13 (ASSUME 7 MEN & 7 WOMEN)  
 1 WC PER 25 OCCUPANTS & 1 LAVATORY PER 40 OCCUPANTS, 1 DRINKING FOUNTAIN PER 100 OCCUPANTS, 1 SERVICE SINK

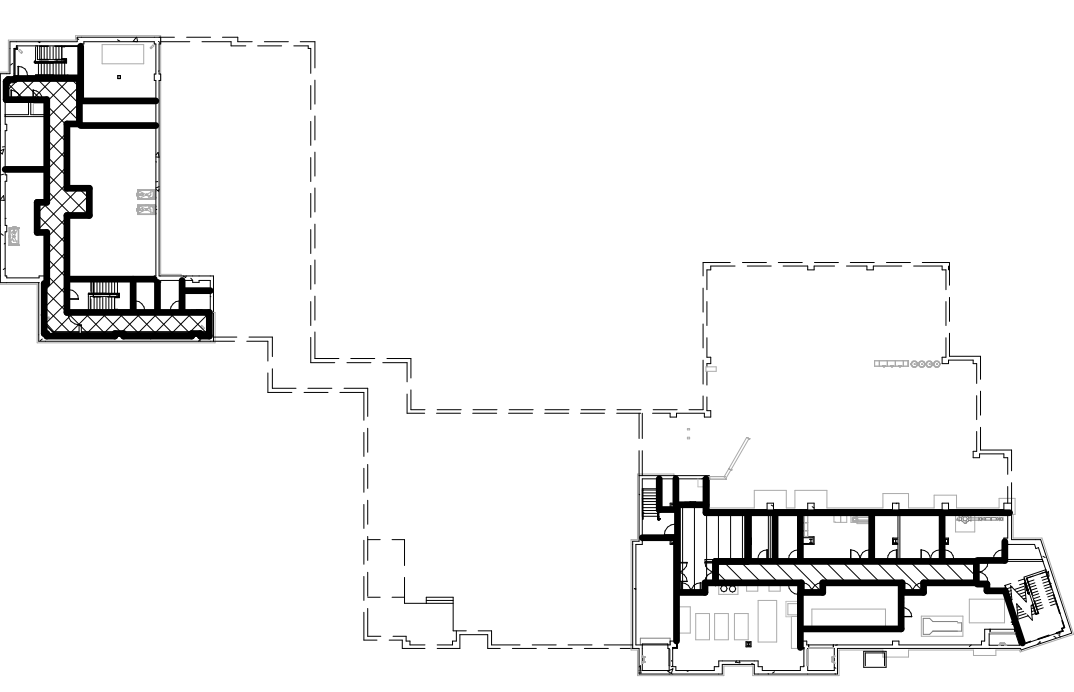
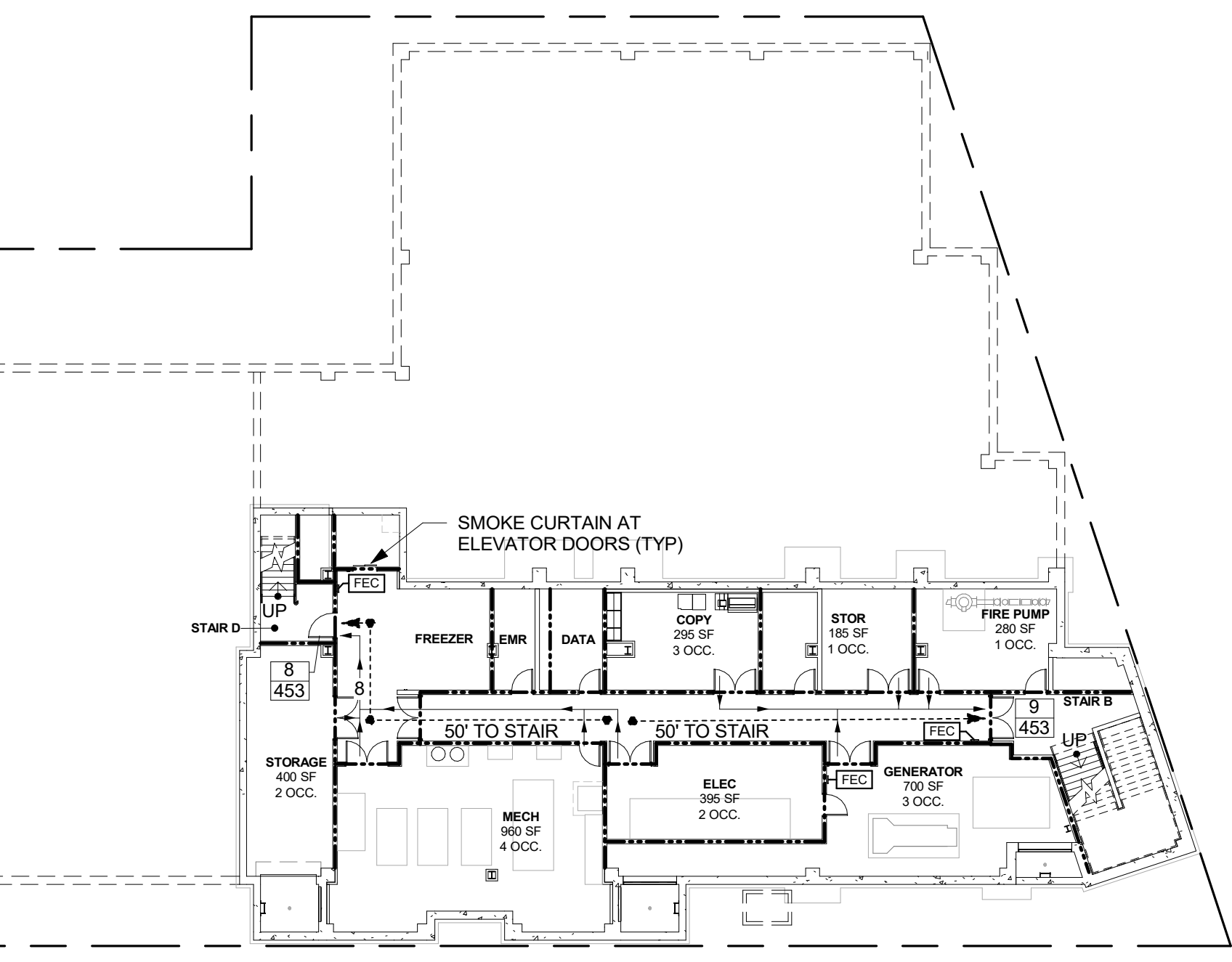
**ACADEMIC BUILDING PLUMBING FIXTURE COUNT**

TYPE	REQ. FIXTURES			PROVIDED			
	MALE	FEMALE	TOTAL	MALE	FEMALE	UNISEX	TOTAL
TOILETS (T) URINALS (U)	18	18	36	8(T)	8(U)	14	20
LAVATORIES	18	18	36	11	11	20	42
DRINKING FOUNTAINS	18						42
SERVICE SINK	1						41

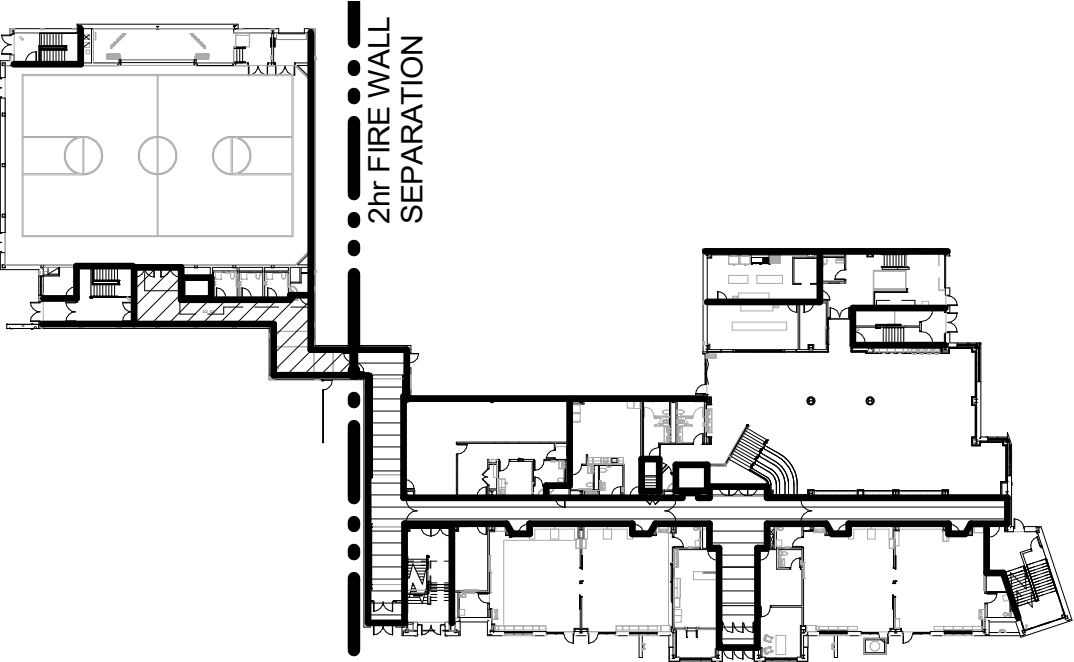
CALC. BASED ON FULL TIME OCCUPANCY OF ALL ROOMS MINUS THE CAFETERIA (ASSUME WHEN THIS SPACE IS OCCUPIED, OTHER SPACES ARE NOT)  
 OCCUPANCY = 1,731 (ASSUME 866 MEN & 866 WOMEN)  
 1 FIXTURE PER 50 OCCUPANTS, 1 DRINKING FOUNTAIN PER 100 OCCUPANTS, 1 SERVICE SINK



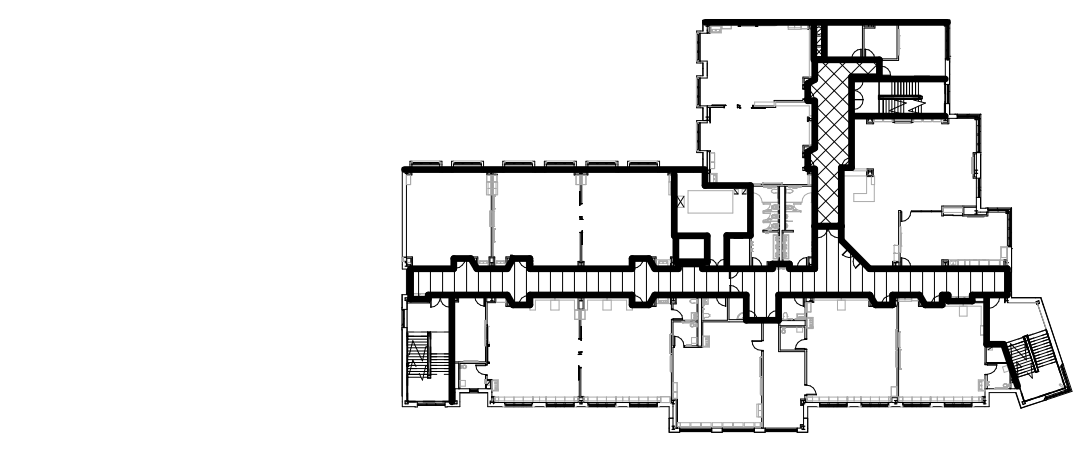
**0 CODE COMPLIANCE - LOCKER & BASEMENT LEVEL PLAN**  
 1" = 20'-0"



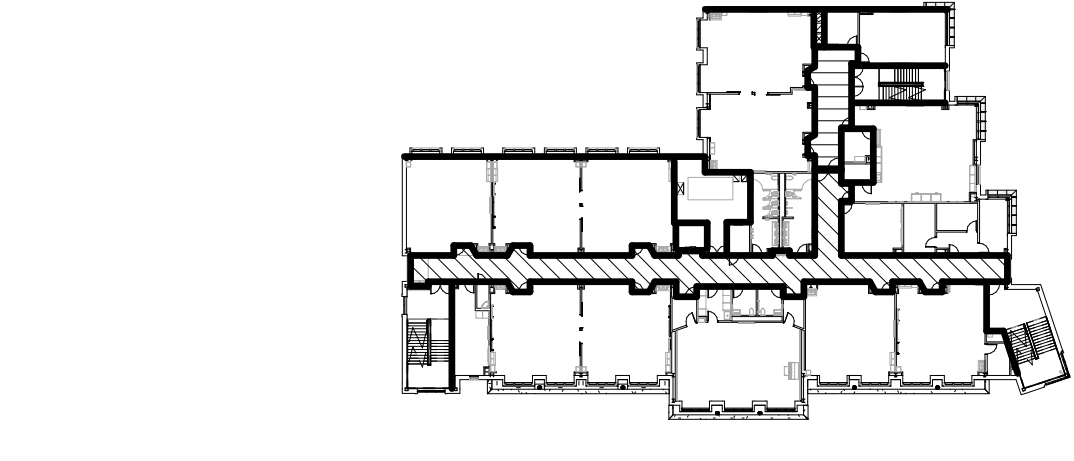
**S0 SMOKE ZONES - BASEMENT**  
 1" = 60'-0"



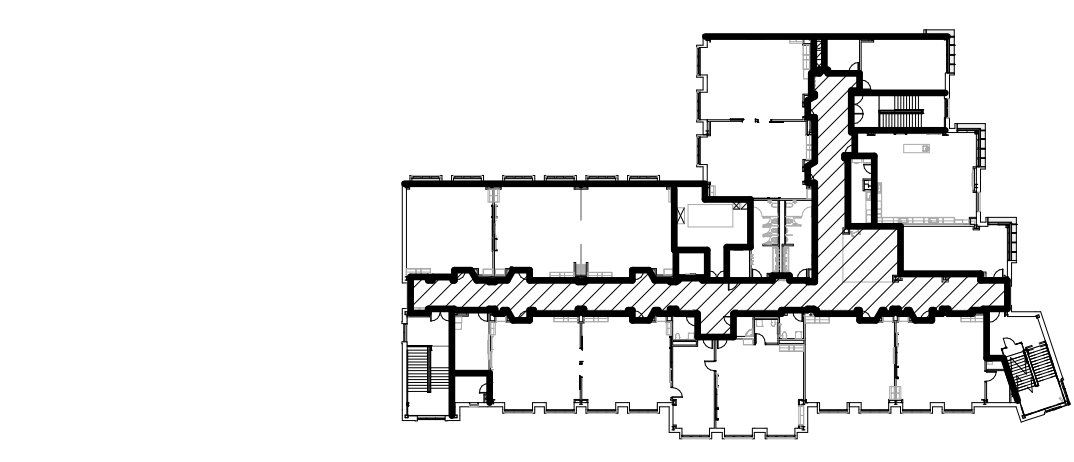
**S1 SMOKE ZONES - 1st FLOOR**  
 1" = 60'-0"



**S2 SMOKE ZONES - 2nd FLOOR**  
 1" = 60'-0"



**S3 SMOKE ZONES - 3rd FLOOR**  
 1" = 60'-0"



**S4 SMOKE ZONES - 4th FLOOR**  
 1" = 60'-0"

**NEW COMMUNITY SCHOOL 35 AT ST DENIS SITE**  
 YONKERS JOINT SCHOOLS CONSTRUCTION BOARD  
 121 McLean Avenue  
 Yonkers, NY 10705

**KG+D ARCHITECTS, PC**  
 265 MAIN STREET - MOUNT KISCO, NEW YORK 10549  
 P-914.666.9900

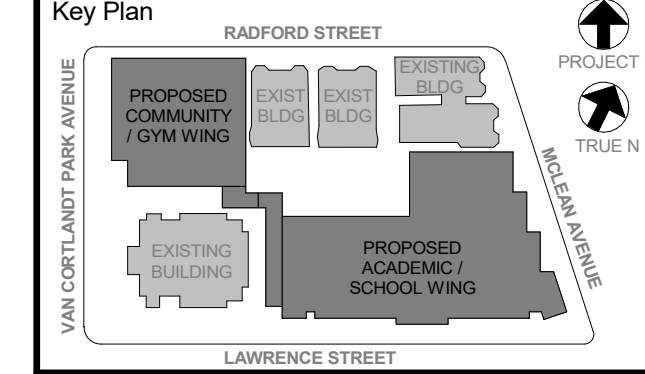
NYS SED PROJECT CONTROL NO.  
**66-23-00-01-0-346-001**

CONSTRUCTION DOCUMENTS

**LEGEND**

- 2hr FIRE BARRIER
- 1hr FIRE BARRIER
- 2hr FIRE WALL
- MAX TRAVEL DISTANCE
- 12 OCCUPANT LOAD ON PATH
- RW RESCUE WINDOW
- FEC FIRE EXTINGUISHER CABINET
- X OCCUPANCY LOAD
- Y MAXIMUM CAPACITY
- ADA ACCESSIBLE EXIT
- FEC FIRE EXTINGUISHER CABINET

**NOTE: BUILDING IS FULLY SPRINKLERED**



**NOTE: ALL LOCAL LEGAL REQUIREMENTS ARE NOTED AND INDICATED OR REPRESENTED BY THIS DRAWING AND ARE THE PROPERTY OF THE ARCHITECT. ANY CHANGES TO THESE REQUIREMENTS SHALL BE THE RESPONSIBILITY OF THE ARCHITECT. ANY CHANGES TO THESE REQUIREMENTS SHALL BE THE RESPONSIBILITY OF THE ARCHITECT. ANY CHANGES TO THESE REQUIREMENTS SHALL BE THE RESPONSIBILITY OF THE ARCHITECT.**

**Professional Seal**

**Revision Log**

No.	Date	Issue
5	11/01/2021	ISSUE FOR BID
4	08/24/2021	NYS ED ADDENDUM 1
3	07/14/2021	CONSTRUCTION DOCS - NYS ED
2	12/15/2020	DESIGN DEVELOPMENT

**CODE COMPLIANCE**

**Job No.** 2019-1026 **Date** 12/15/2020  
**Scale** AS NOTED **Drawn / Checked** --

**Sheet Number** CC002