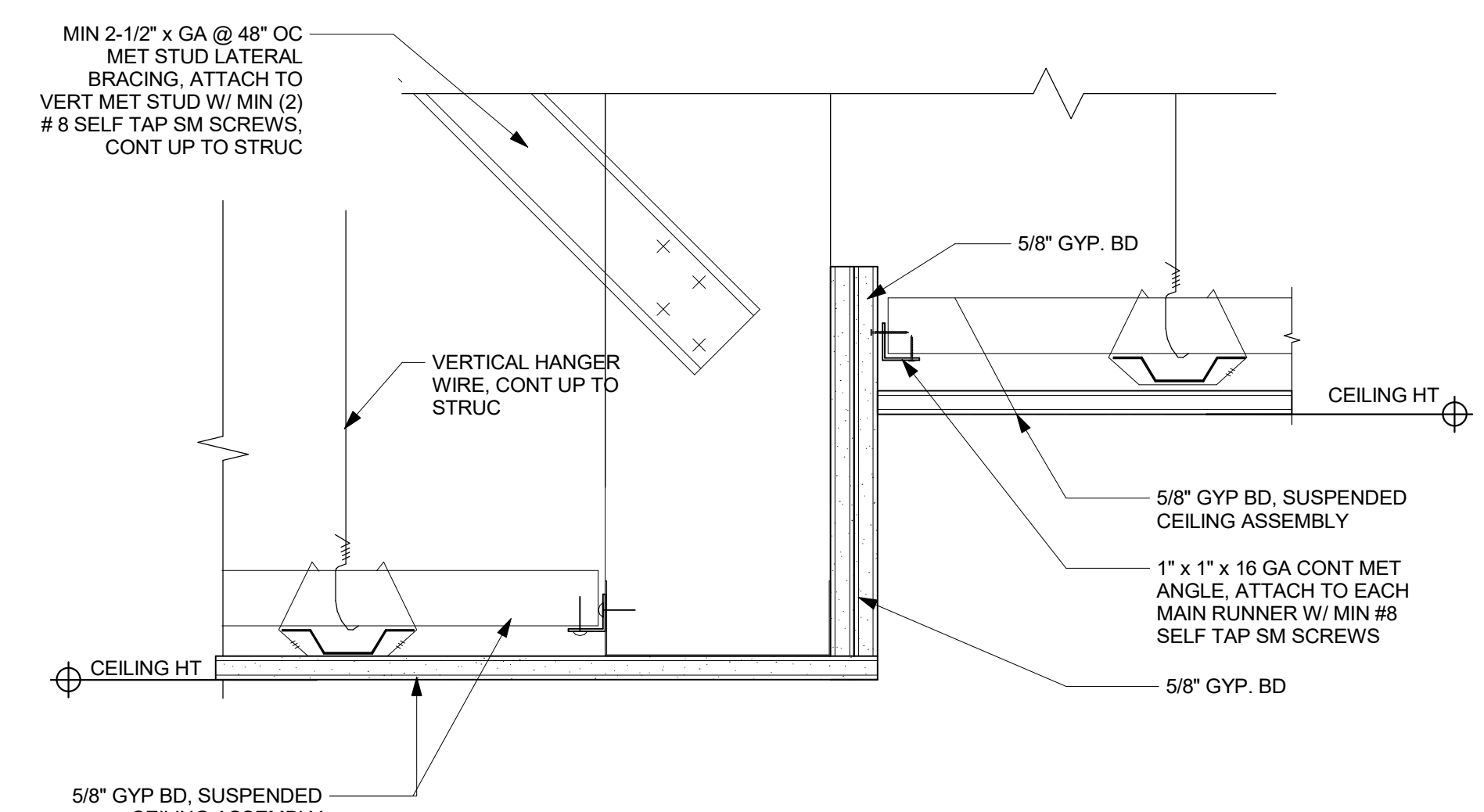
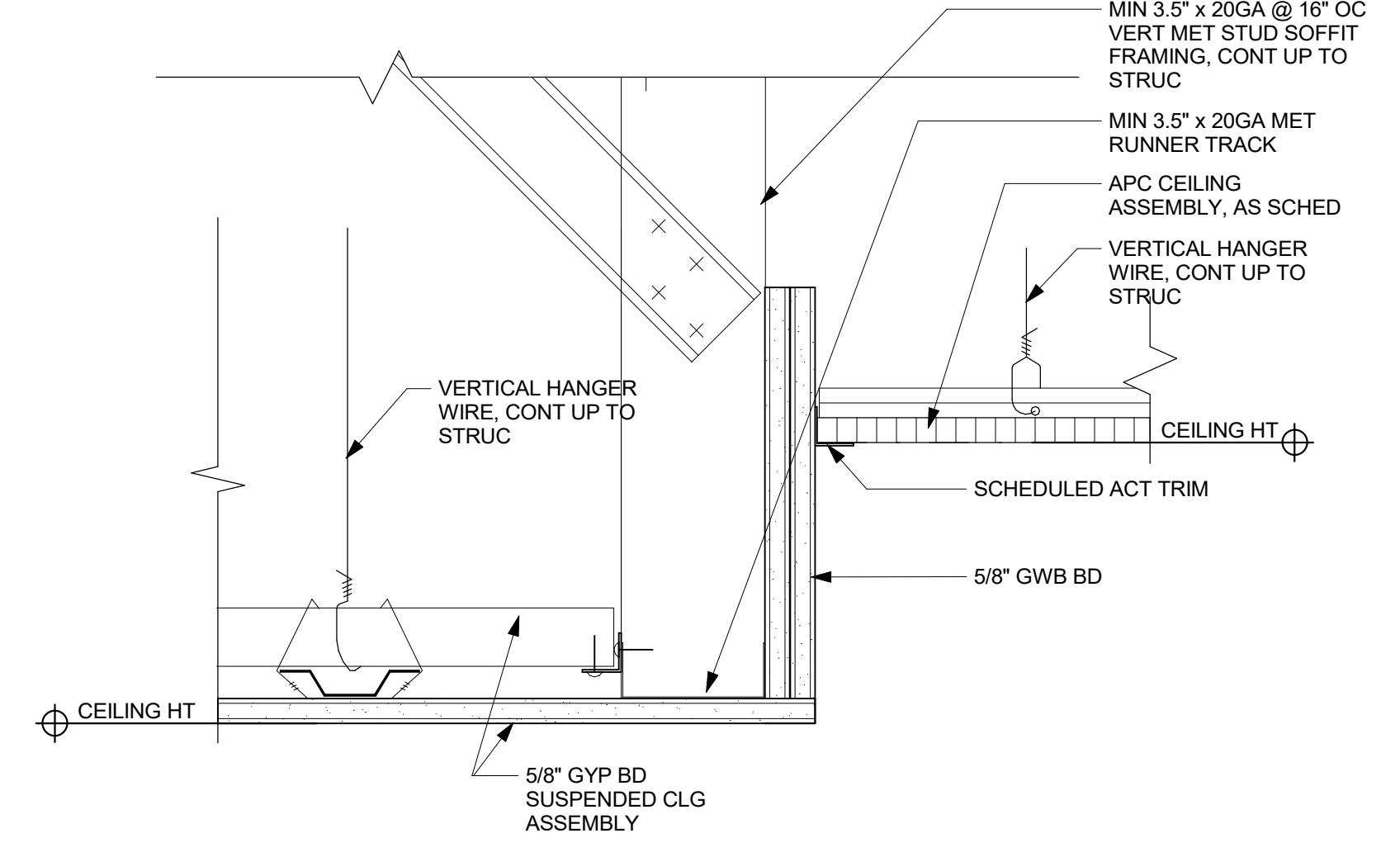


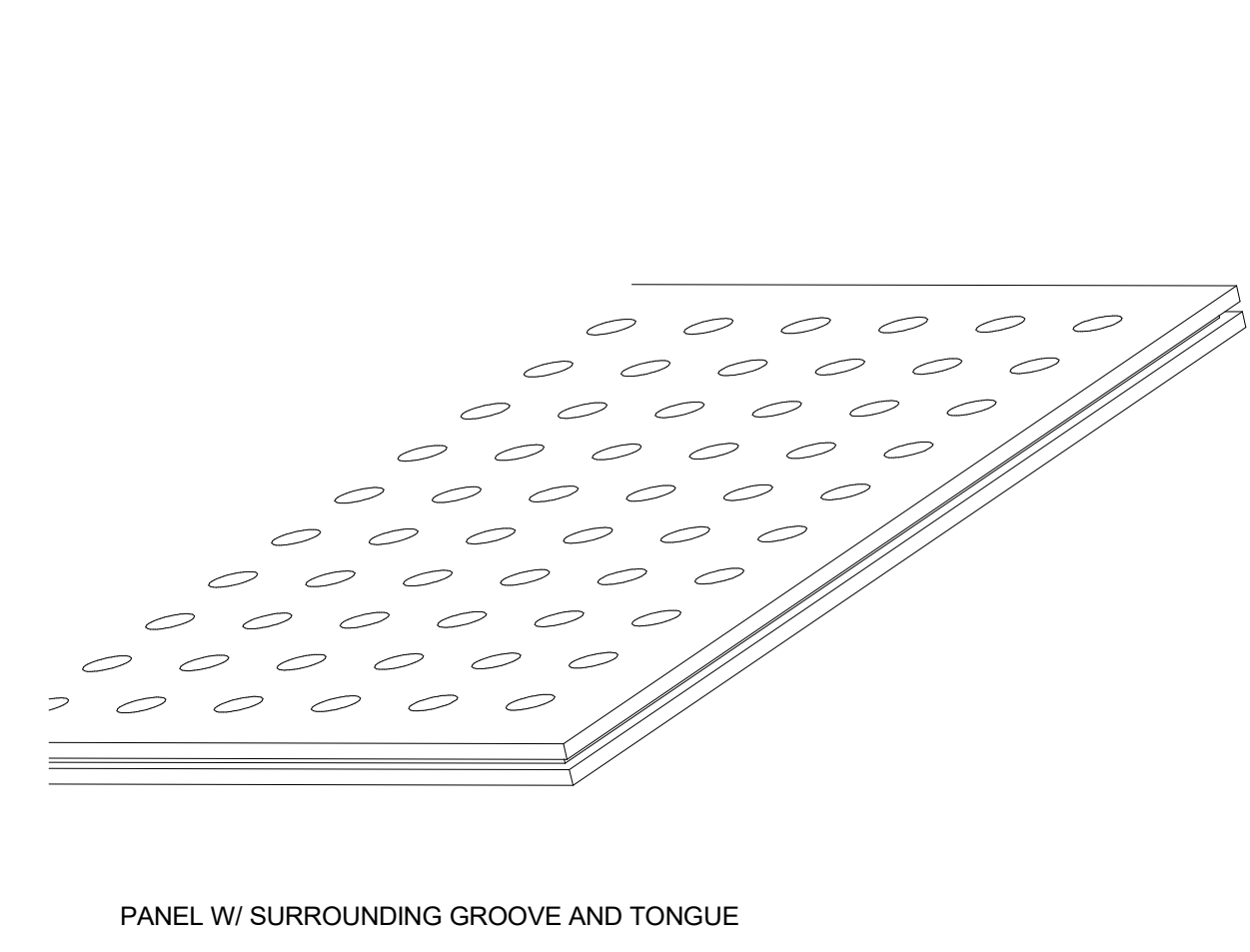
3 TYPICAL CEILING DETAIL AT CORRIDOR BULKHEAD
3" = 1'-0"



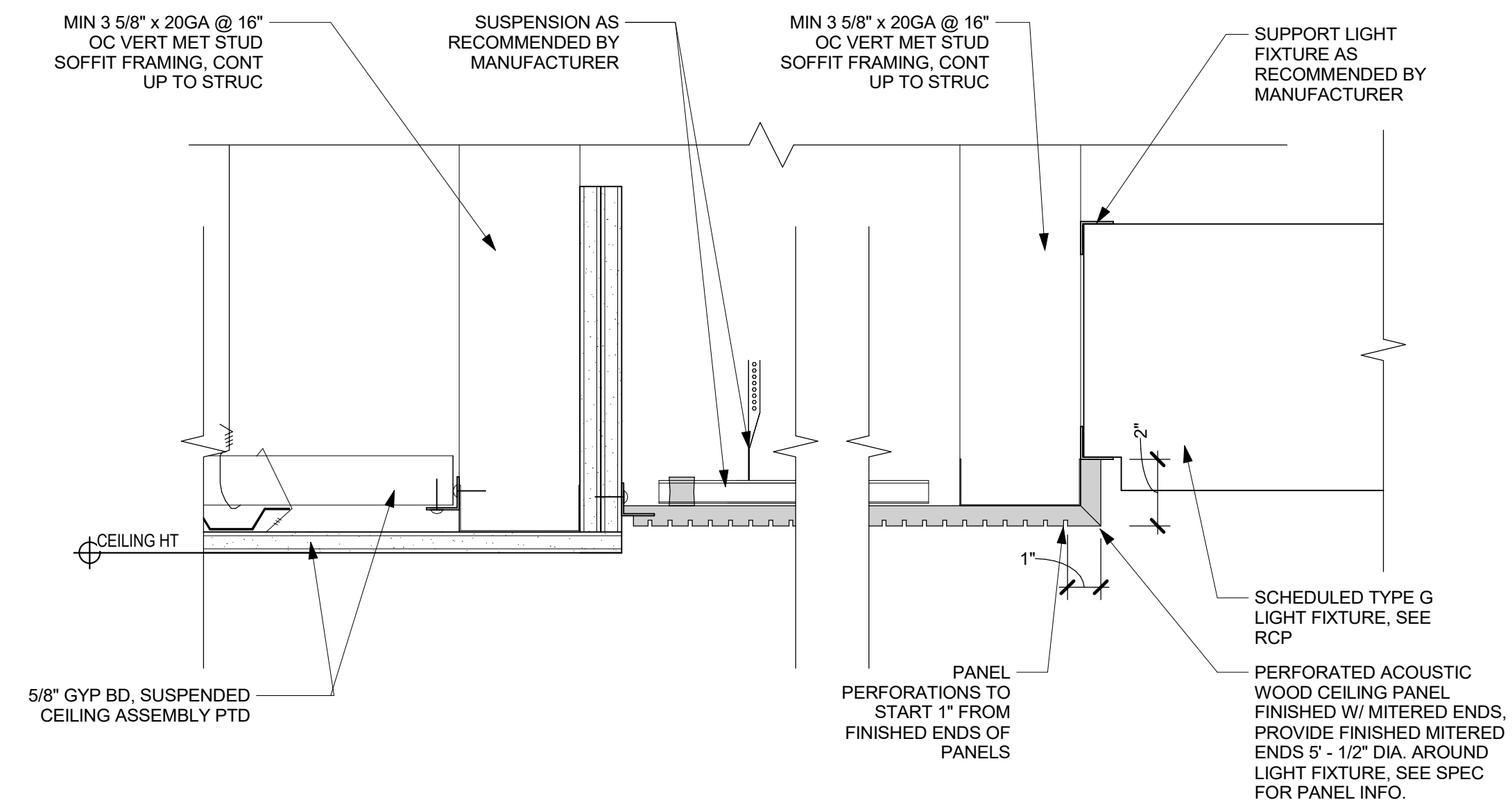
2 TYPICAL CEILING DETAIL GYP-GYP
3" = 1'-0"



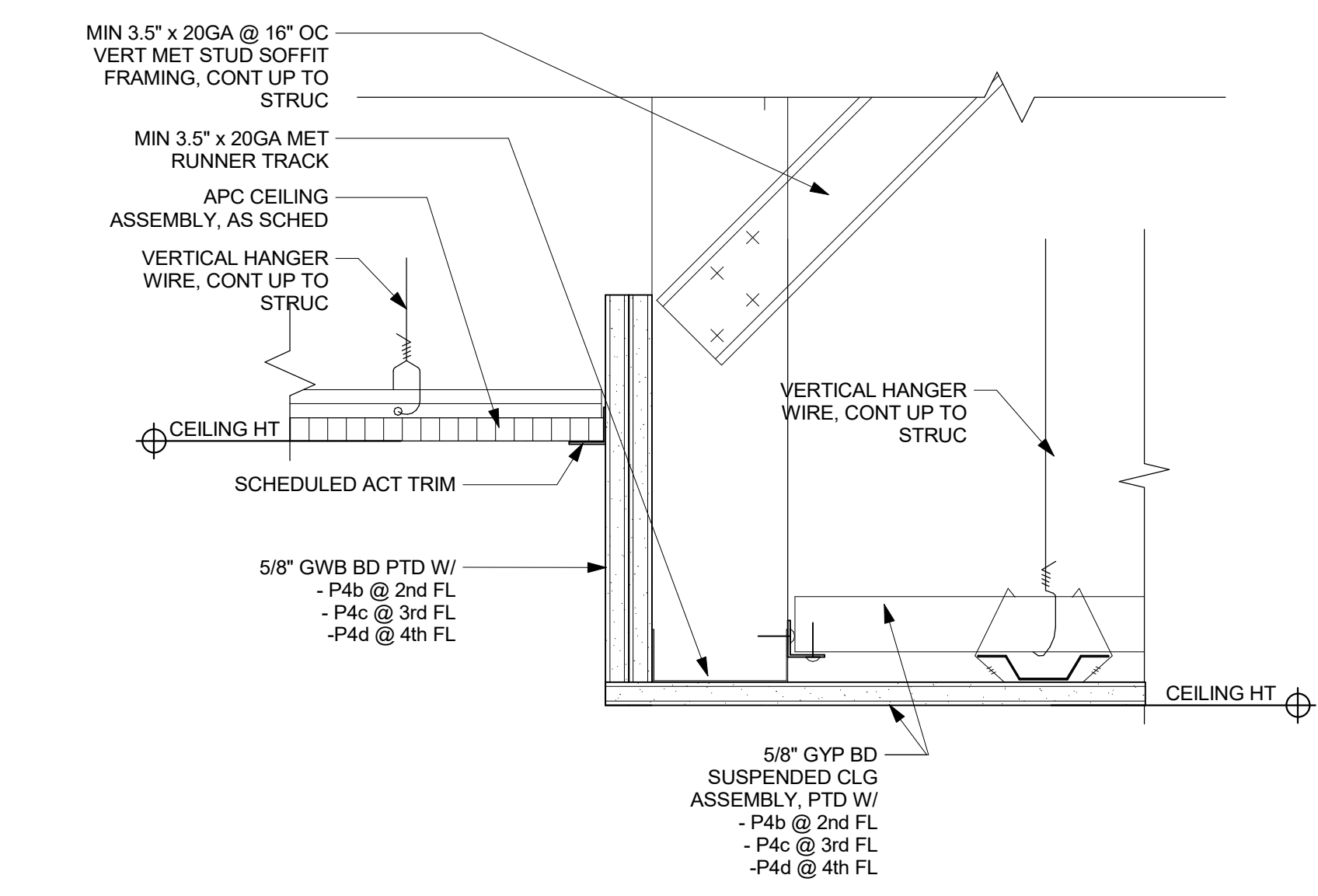
1 TYPICAL CEILING DETAIL GYP-ACT
3" = 1'-0"



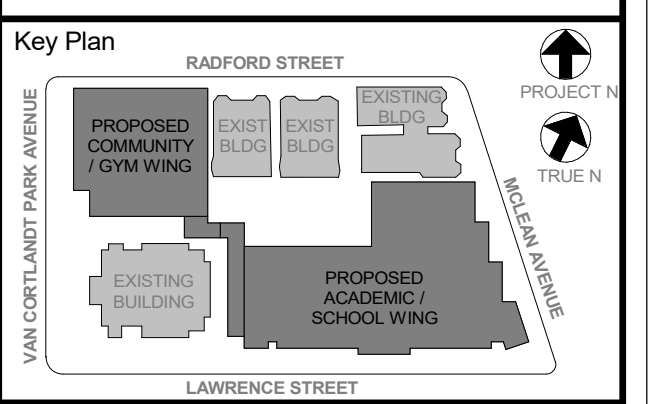
6 ACOUSTIC WOOD PANEL AXON
3" = 1'-0"



5 WOOD CEILING DETAIL AT LOBBY
3" = 1'-0"



4 CEILING DETAIL AT CORR. NOOK SOFFIT
3" = 1'-0"



NOTE: ALL LOCAL LEGAL REQUIREMENTS ARE PLANNED AND INDICATED OR REPRESENTED BY THIS DRAWING AND ARE THE PROPERTY OF HOKER GARRETT & LINDSEY ARCHITECTS, PC (HGL) AND HAVE BEEN CREATED FOR USE ON THIS PROJECT. NONE OF SUCH LEGAL DESIGNS, ARRANGEMENTS OR PLANS SHALL BE USED BY OR DISCLOSED TO ANY PURPOSE WHATSOEVER WITHOUT THE WRITTEN PERMISSION OF HGL.

WRITTEN DIMENSIONS ON THIS DRAWING SHALL HAVE PRECEDENCE OVER UNLabeled DIMENSIONS CONTRACTOR SHALL VERIFY ALL ACTUAL DIMENSIONS AND CONDITIONS ON THE JOB AND THE ARCHITECT MUST BE NOTIFIED OF ANY VARIATIONS FROM DIMENSIONS AND CONDITIONS SHOWN. SHOP DETAILS MUST BE SUBMITTED TO THIS OFFICE FOR APPROVAL BEFORE PROCEEDING WITH FABRICATION.

ALTERATIONS BY ANY PERSON, IN ANY WAY, OF ANY ITEM CONTAINED ON THIS DOCUMENT, UNLESS ACTING UNDER THE DIRECTION OF THE LICENSED ARCHITECT, ENGINEER, PROFESSIONAL DESIGNER OR ARCHITECT, IS A VIOLATION OF COPYRIGHT AND TRADE SECRET LAWS AND IS PROHIBITED.

Professional Seal

No.	Date	Issue
5	11/01/2021	ISSUE FOR BID

CEILING DETAILS	
Job No. 2019-1026	Date 11/01/2021
Scale AS NOTED	Drawn / Checked --
Sheet Number A907	