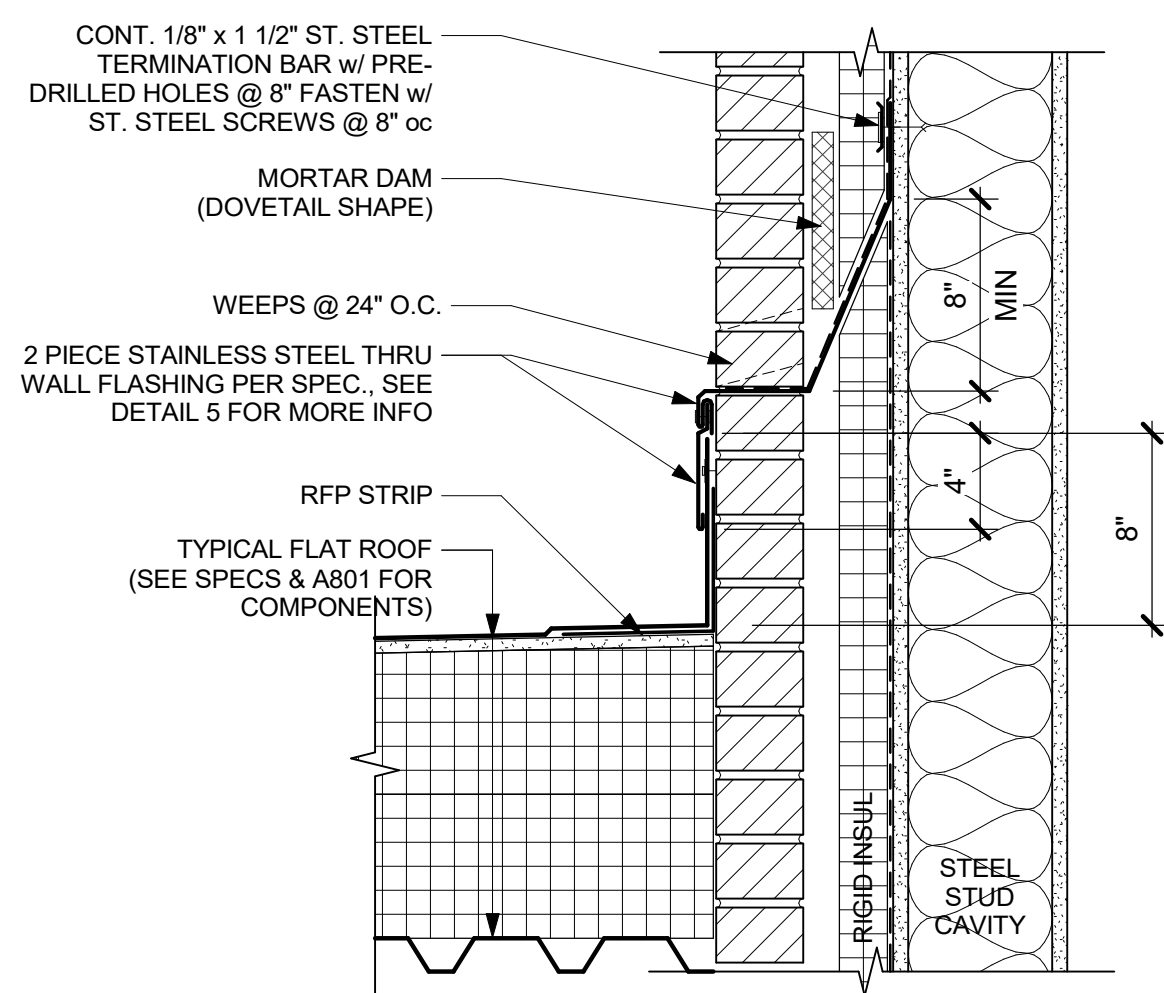
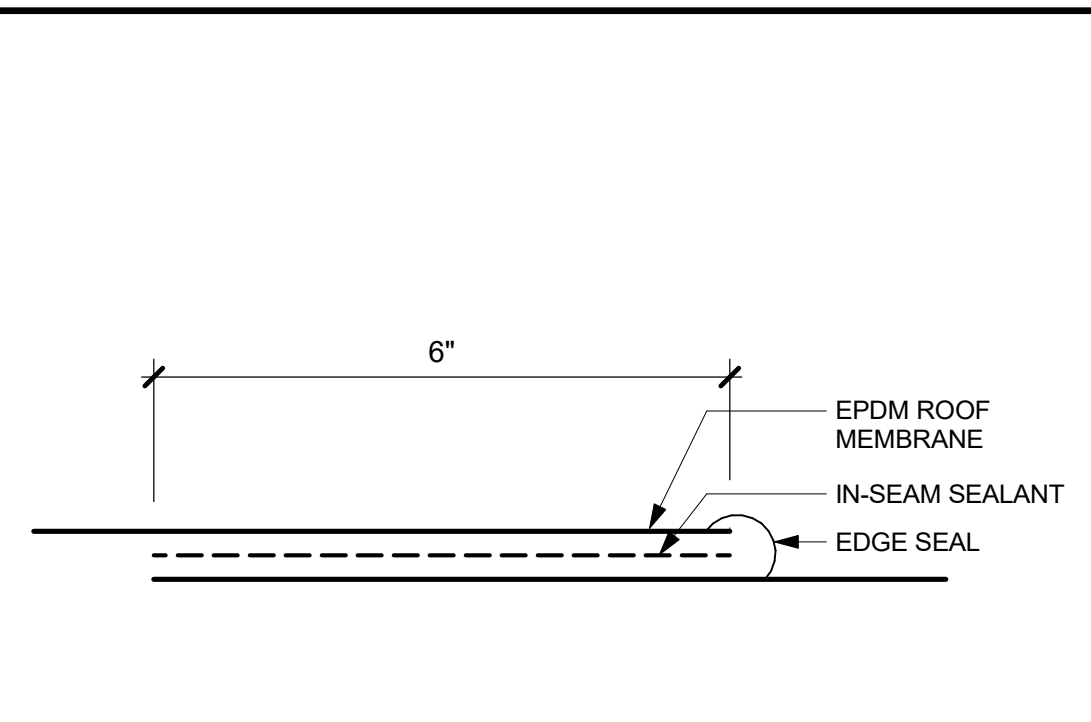


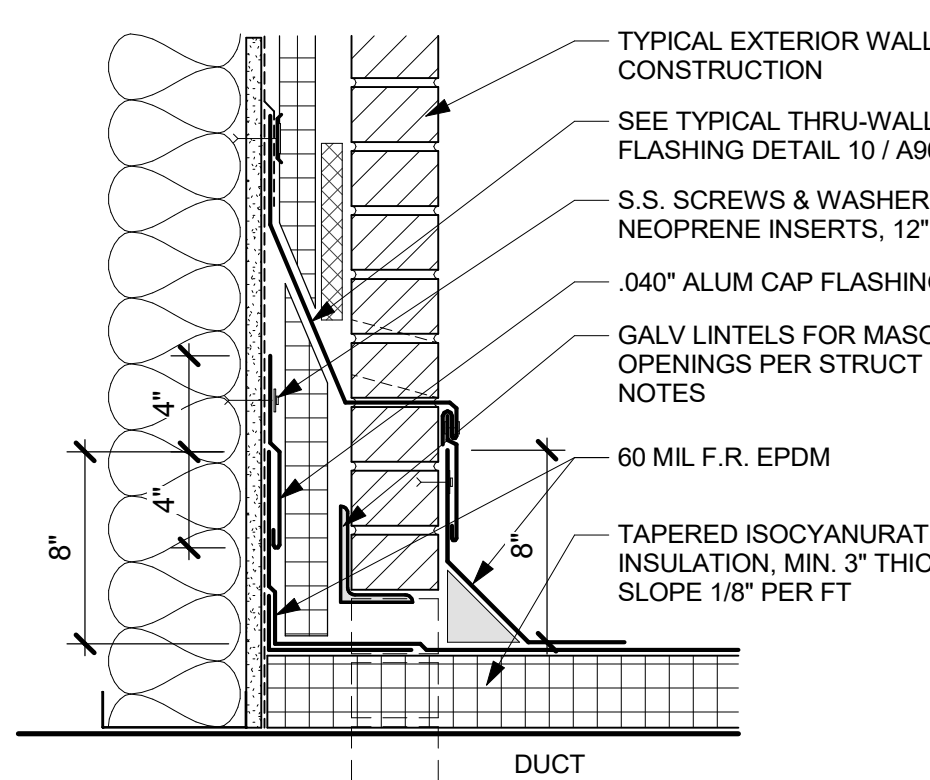
5 THRU-WALL FLASHING DETAIL - TYPICAL
 3\"/>



10 TYPICAL THRU-WALL FLASHING DETAIL -- (SHOWN AT ROOFS & SIMILAR AT AIRSPACE TERMINATIONS)
 1 1/2\"/>

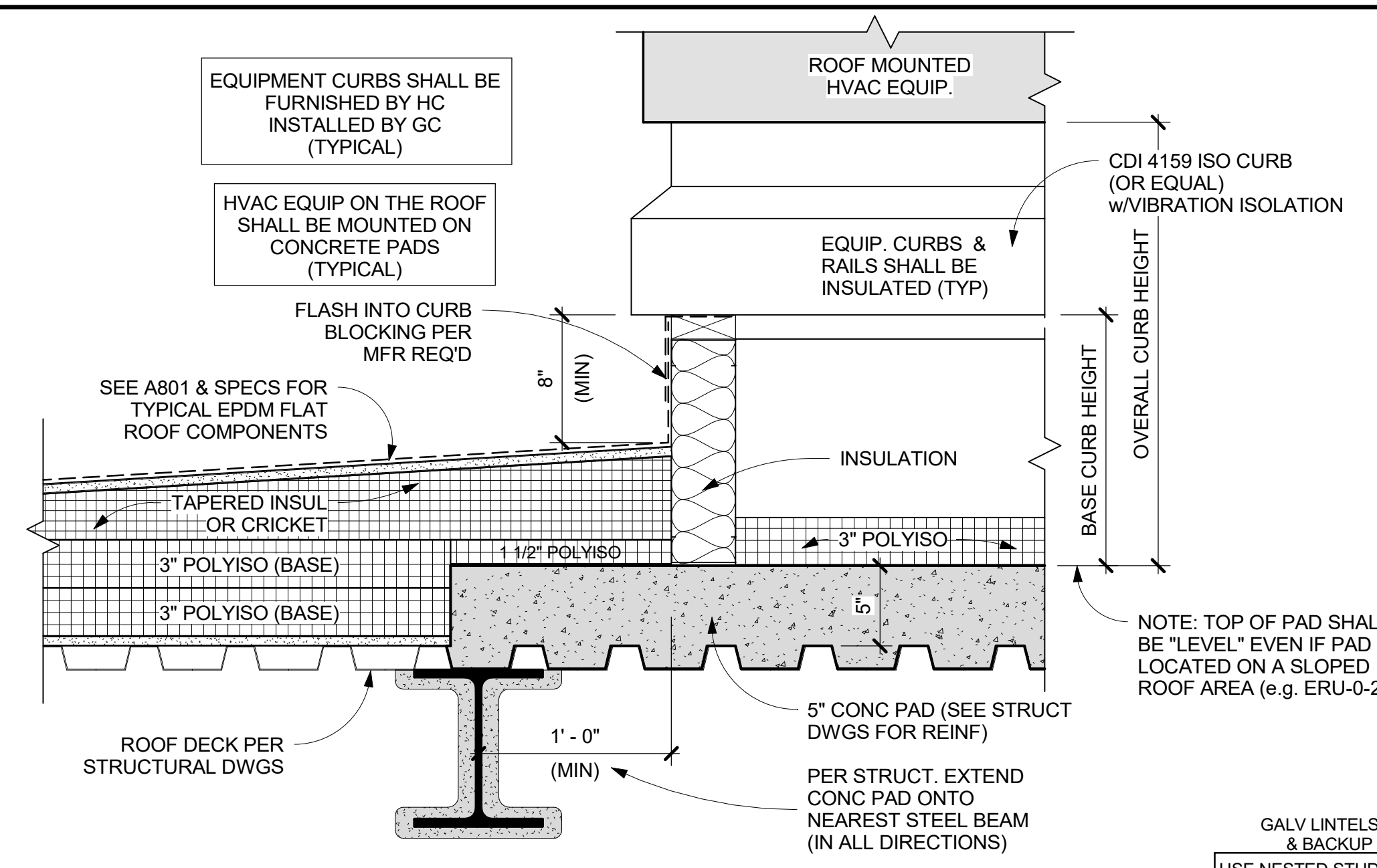


4 TYPICAL EPDM LAP DETAIL
 6\"/>

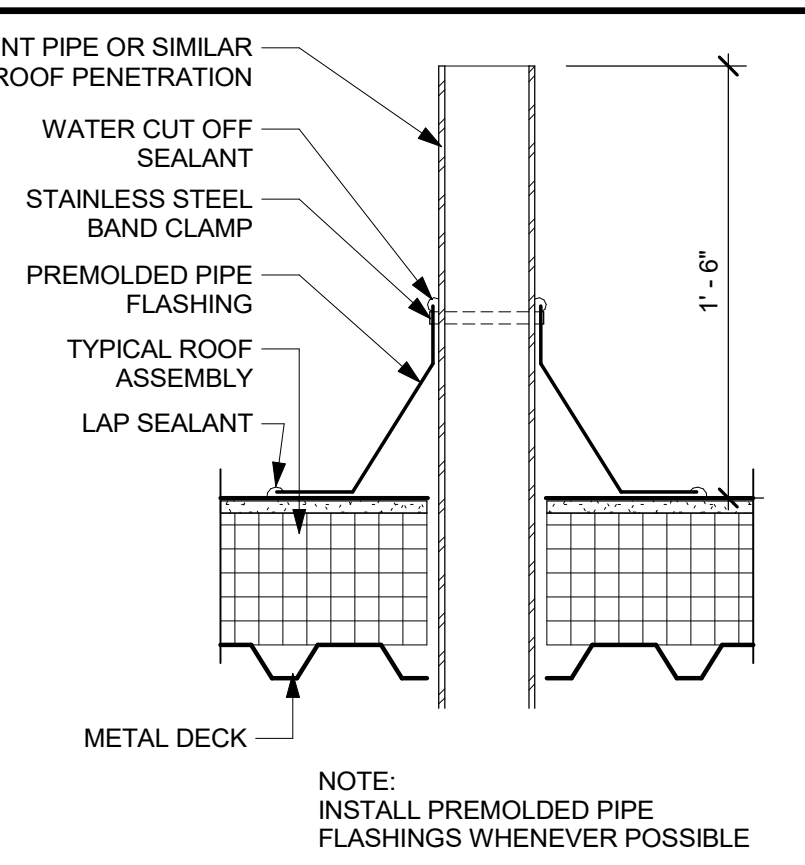


NOTES:
 1. SEE MECHANICAL DRAWINGS FOR ROOFTOP DUCTWORK. COVER SEAMS IN THE DUCT WITH EPDM STRIPPING TO ASSURE THEY ARE NOT LEAKING ANY AIR. INSTALL NEW 3\"/>

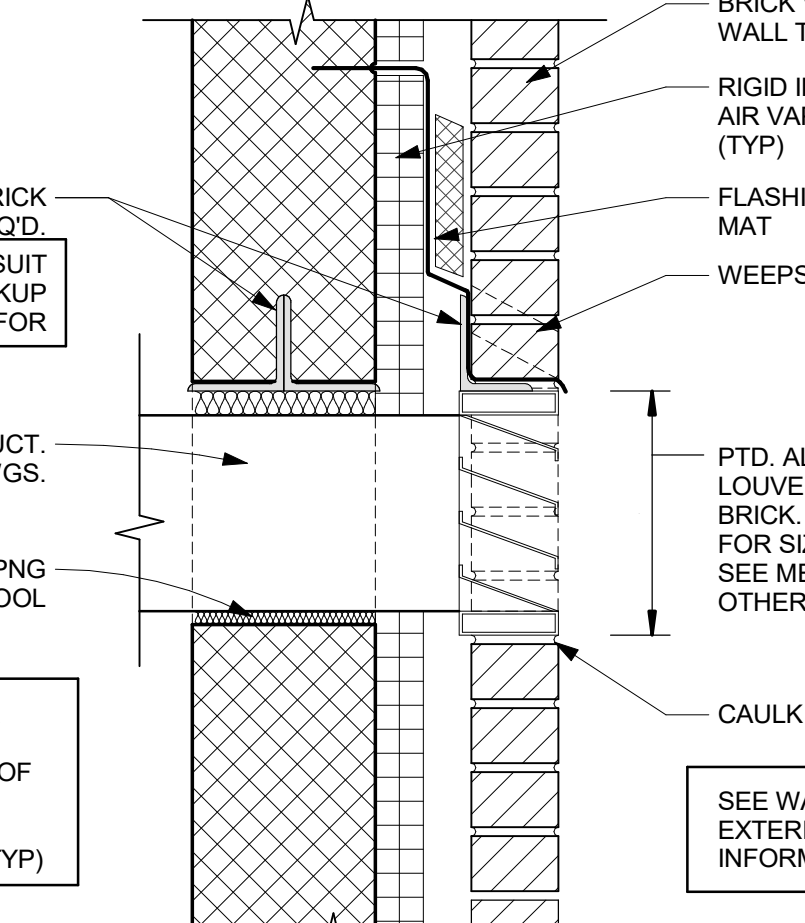
8 DUCT WATERPROOFING
 1 1/2\"/>



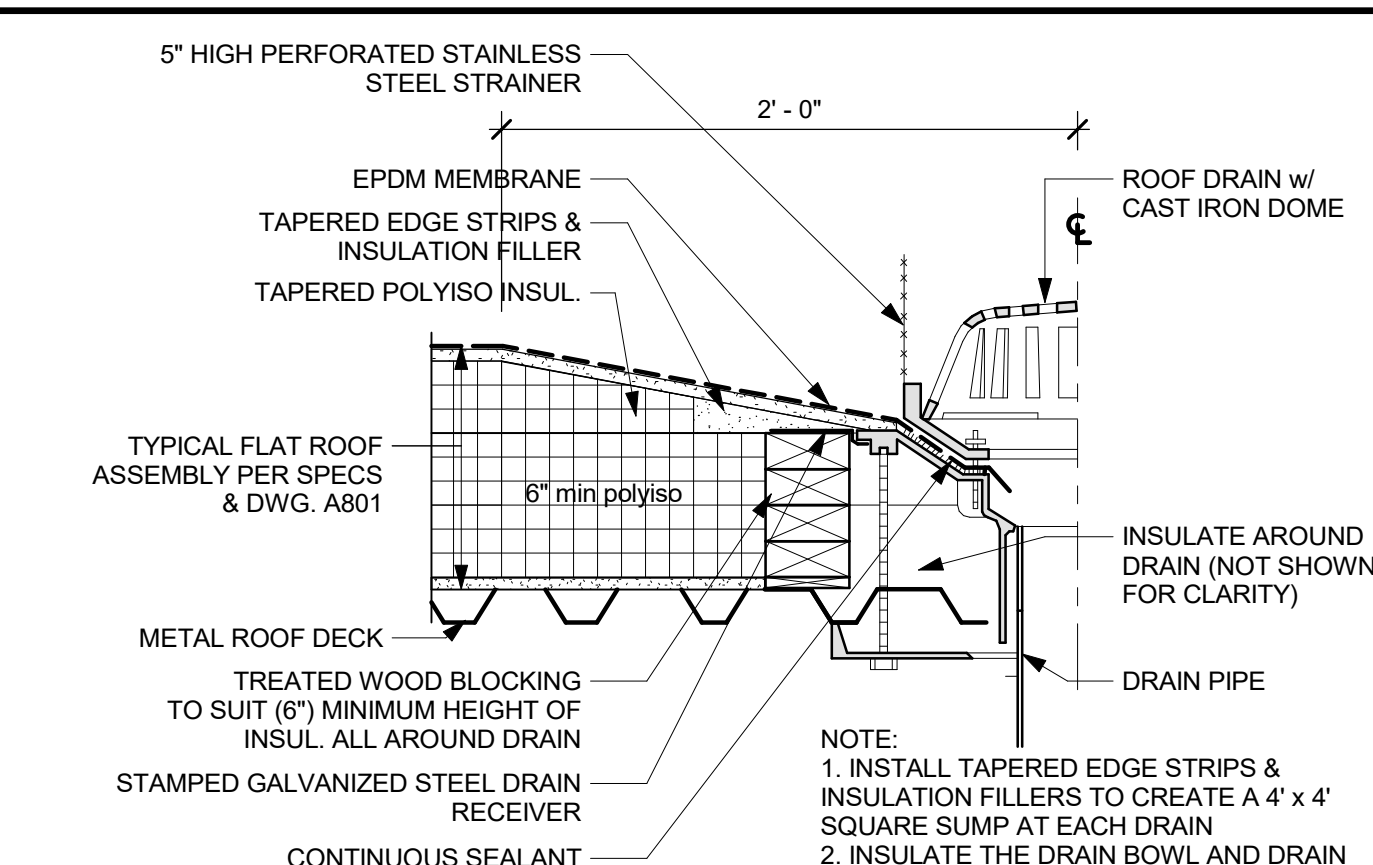
3 ROOF CONC PAD DETAIL
 1 1/2\"/>



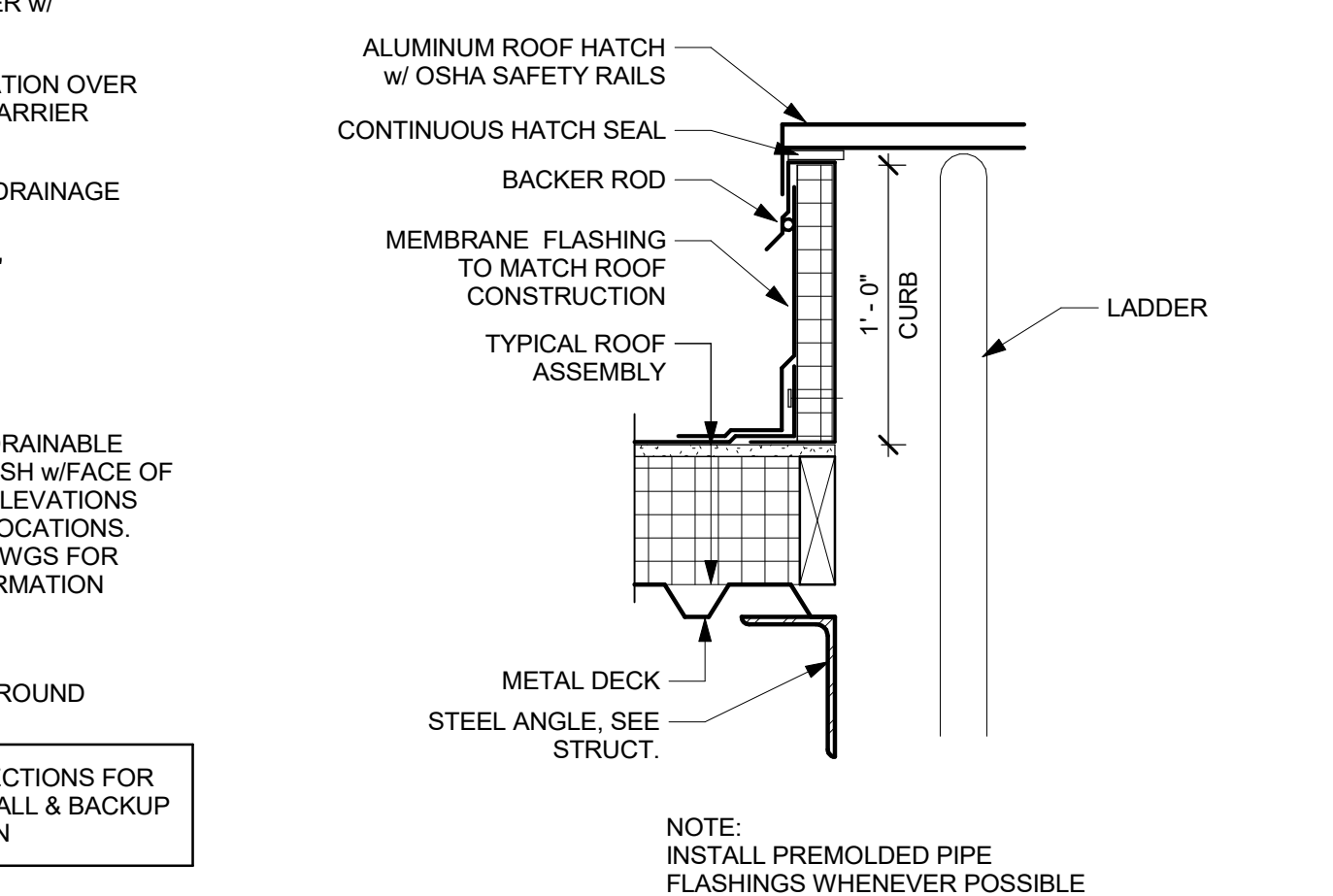
2 TYPICAL VENT PIPE
 1 1/2\"/>



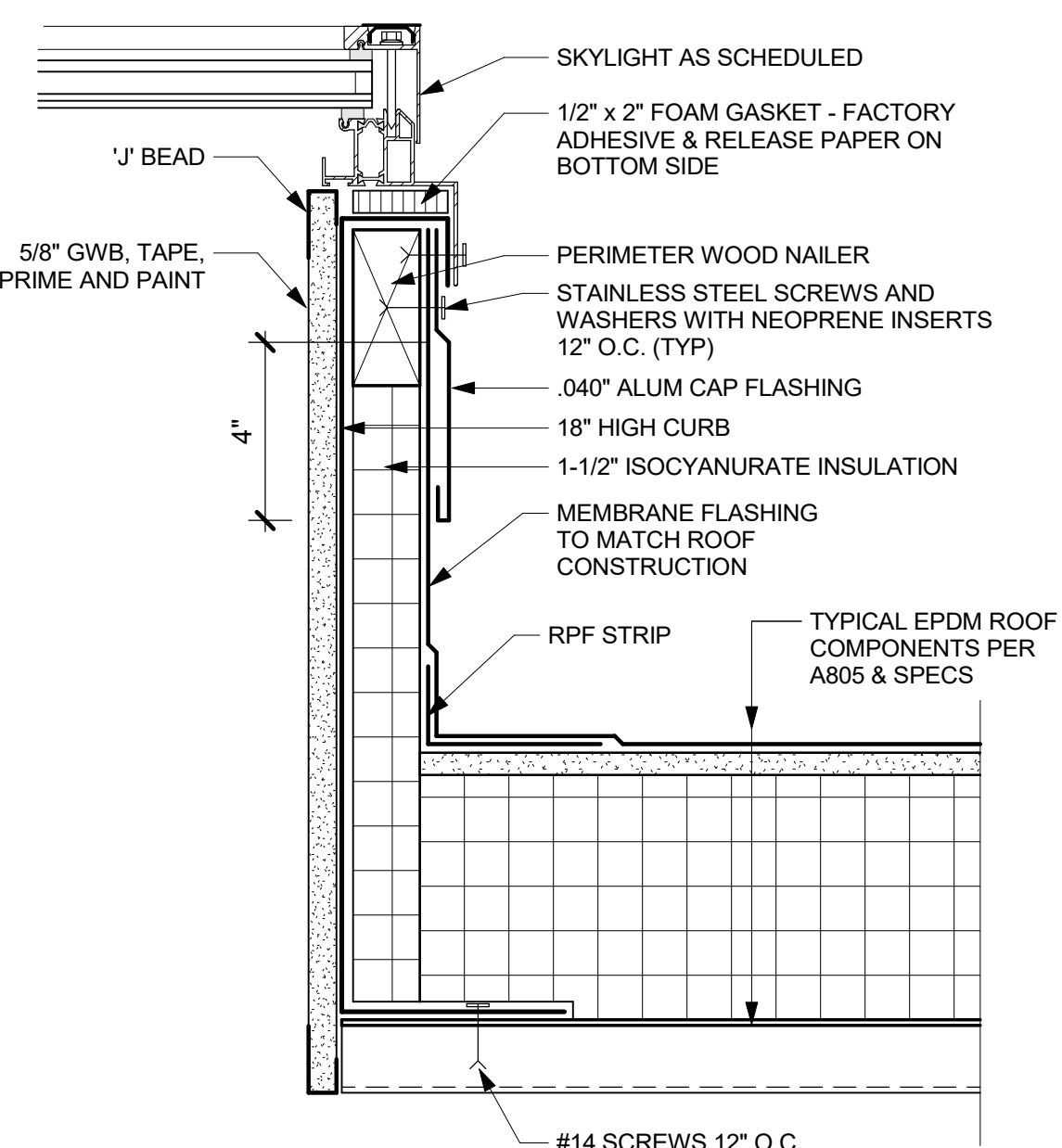
7 TYPICAL LOUVER DETAIL (U.N.O.)
 1 1/2\"/>



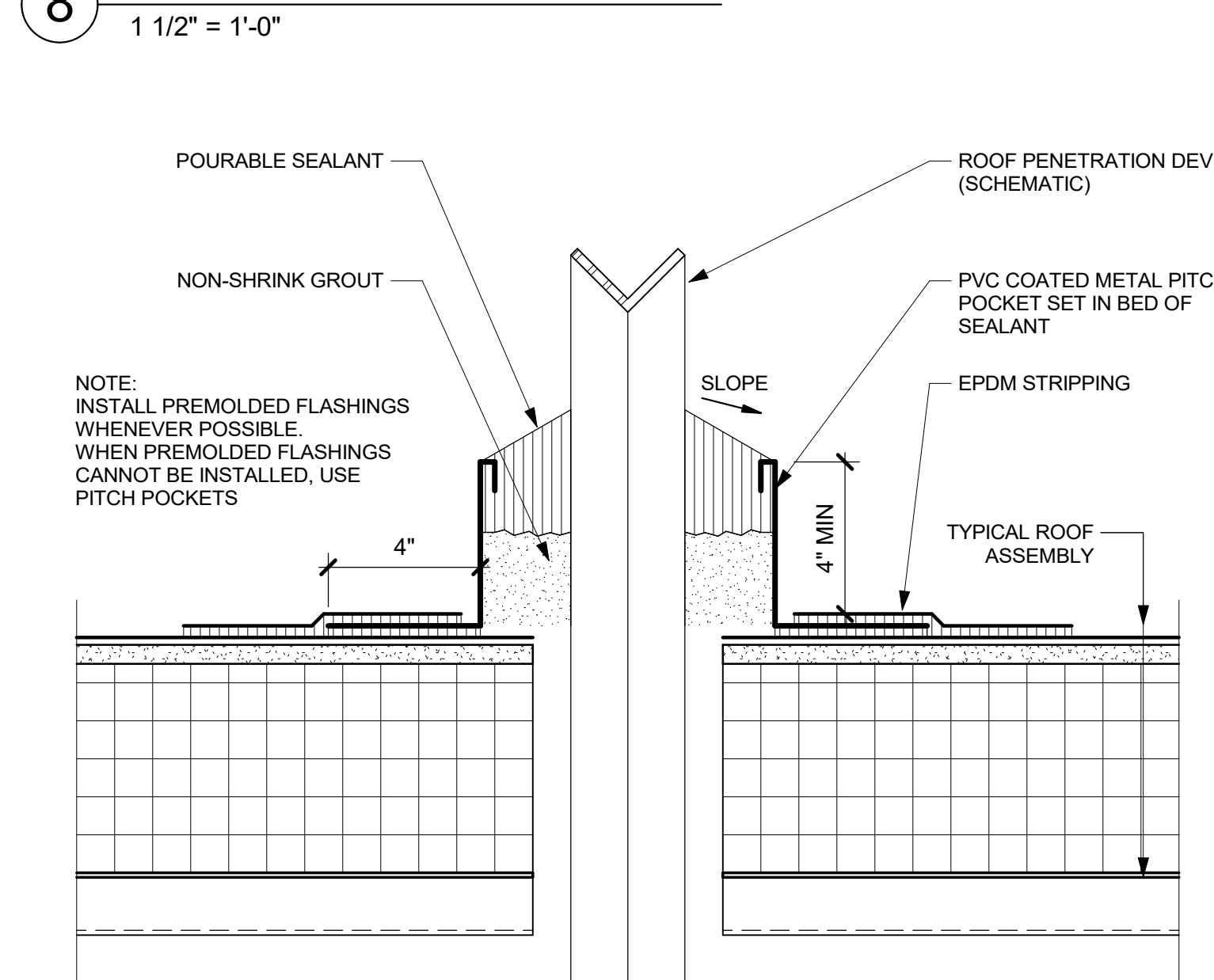
1 TYPICAL ROOF DRAIN
 1 1/2\"/>



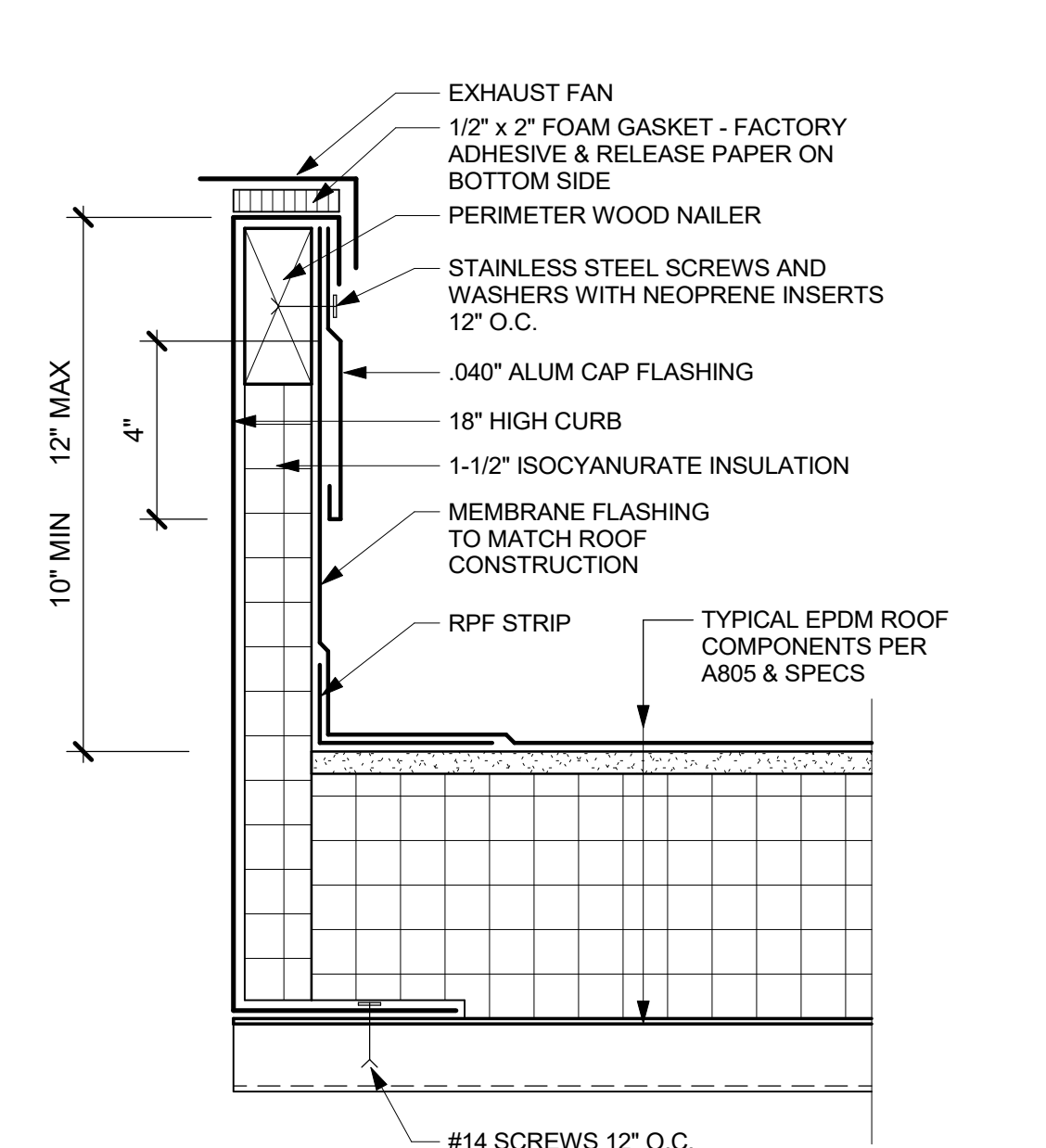
6 TYPICAL ROOF HATCH
 1 1/2\"/>



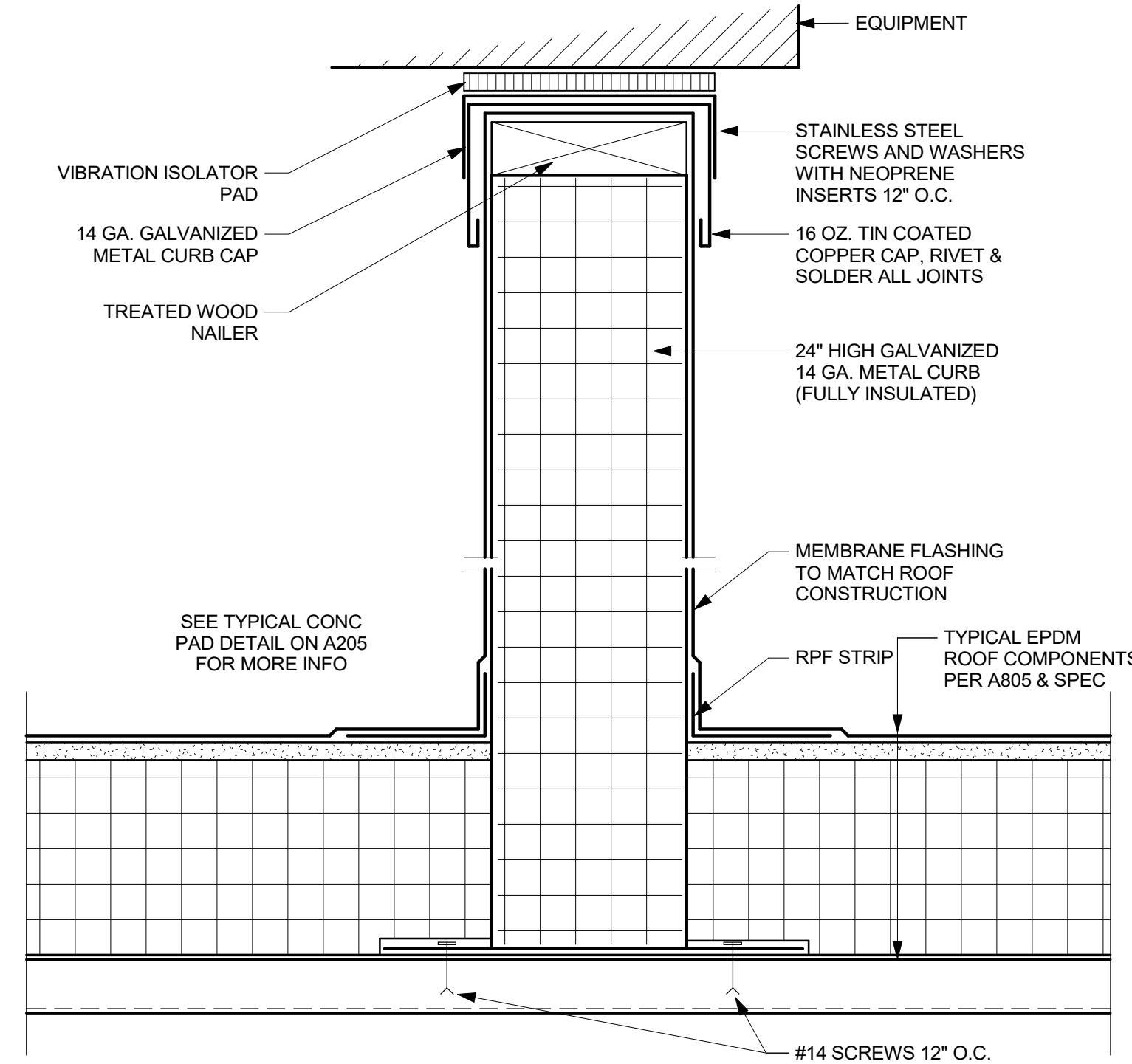
15 TYPICAL SKYLIGHT SUPPORT CURB
 3\"/>



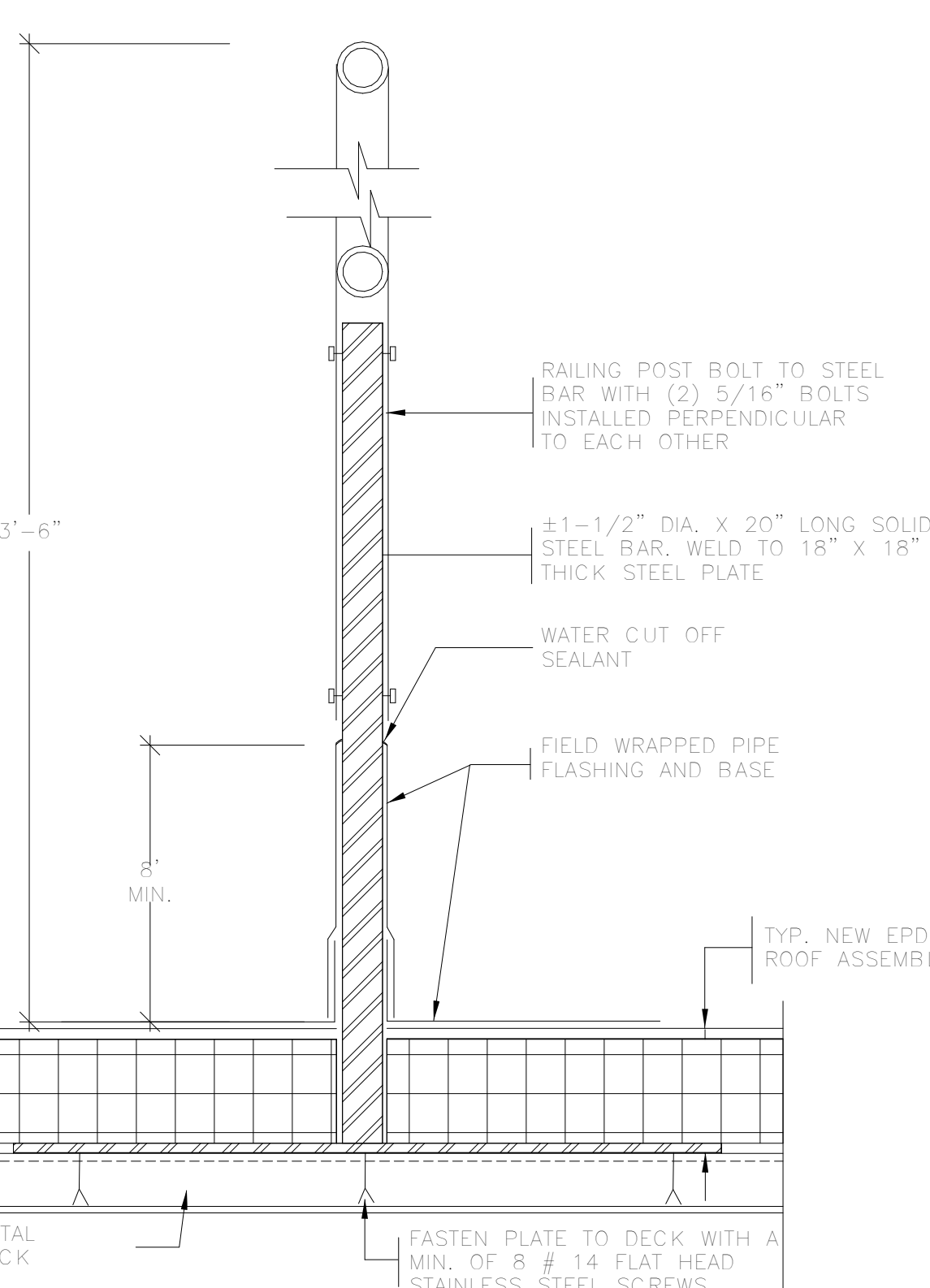
14 TYPICAL PITCH POCKET
 3\"/>



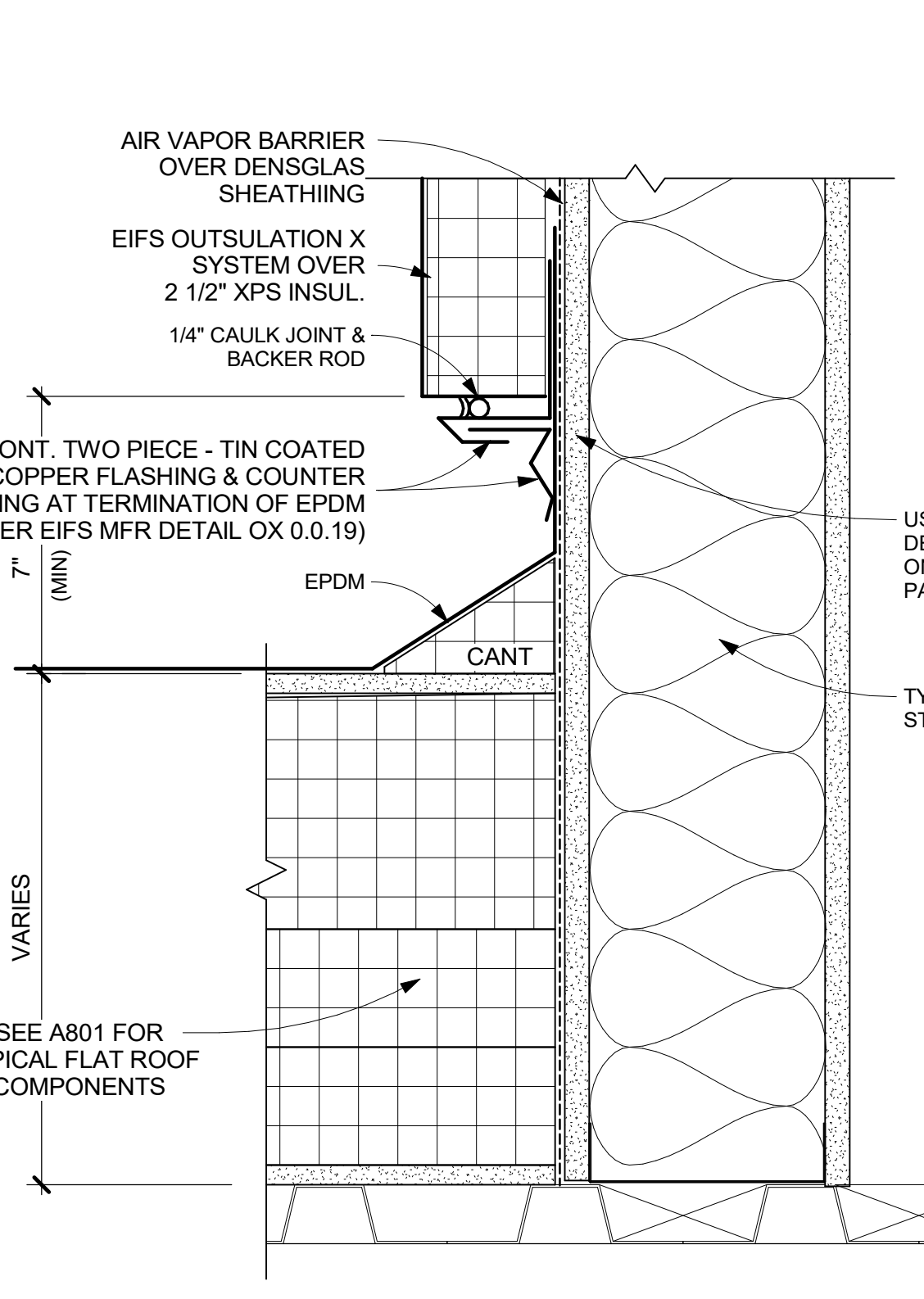
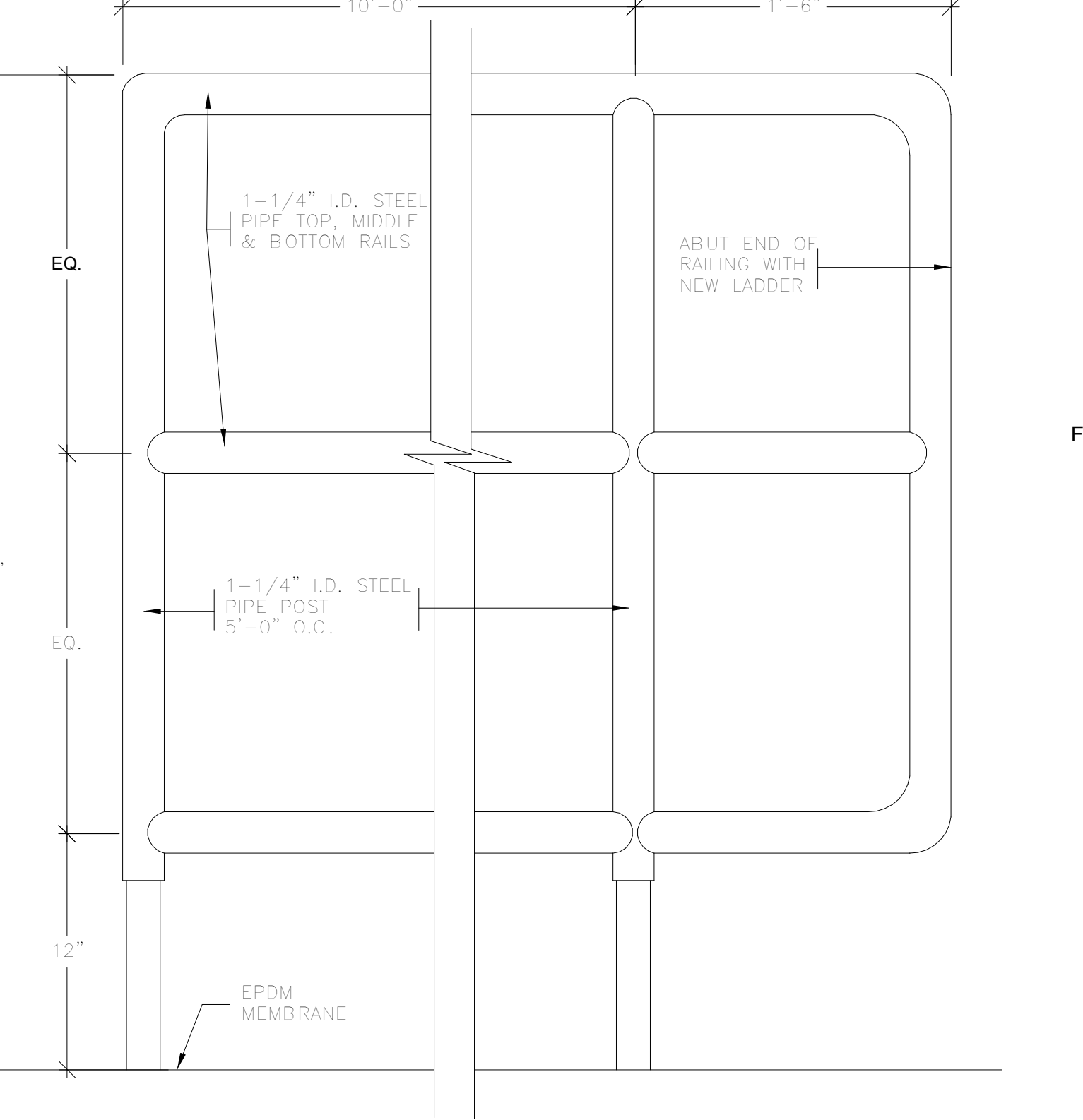
13 TYPICAL EXHAUST FAN SUPPORT CURB
 3\"/>



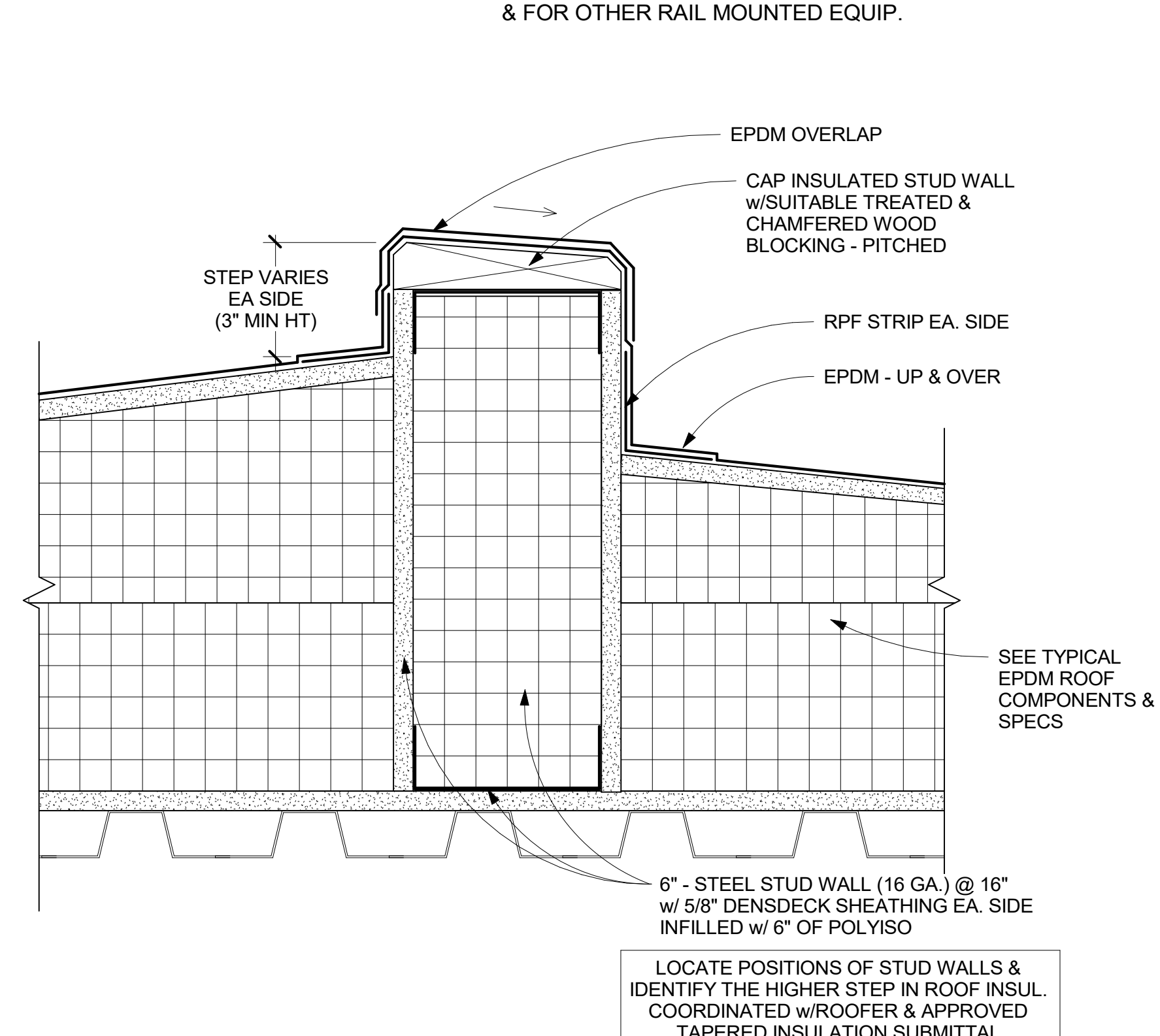
11 TYPICAL RAIL SUPPORT CURB
 3\"/>



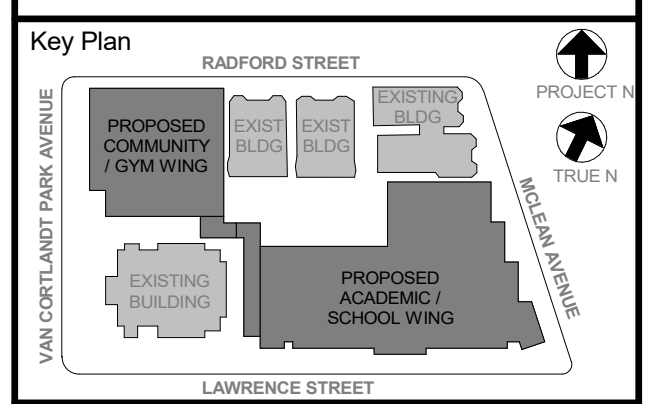
19 TYPICAL DECK MOUNTED ROOF RAILING
 3\"/>



18 TYPICAL EPDM TO EIFS FLASHING DETAIL
 3\"/>



16 TYPICAL STEP IN ROOF INSUL DETAIL
 3\"/>



NOTE: ALL LOCAL LEGAL REQUIREMENTS ARE PLANNED AND INDICATED OR REPRESENTED BY THIS DRAWING AND ARE THE PROPERTY OF THE ARCHITECT. ANY CHANGES TO THIS DRAWING SHALL BE THE PROPERTY OF THE ARCHITECT. ANY CHANGES TO THIS DRAWING SHALL BE THE PROPERTY OF THE ARCHITECT. ANY CHANGES TO THIS DRAWING SHALL BE THE PROPERTY OF THE ARCHITECT.

No.	Date	Issue
5	11/01/2021	ISSUE FOR BID
3	07/14/2021	CONSTRUCTION DOCS - NYSED

Job No.	Date
2019-1026	07/14/2021

Scale	Drawn / Checked
AS NOTED	--