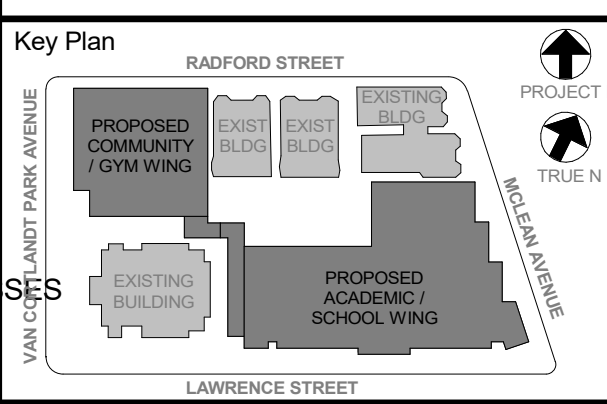


- GENERAL NOTES**
- IT IS A REQUIREMENT OF THIS PROJECT THAT ALL WINDOW, DOOR, LOUVER AND ALL OTHER OPENINGS, PENETRATIONS INCLUDING DECK FLUTES IN THE BUILDING EXTERIOR SHALL HAVE THE SURROUNDING GAPS FOR SHIMS & LEVELING FILLED WITH BATT INSULATION STRIPS TO FORM A COMPLETE AIR INFILTRATION BARRIER. IN MANY CASES SMALL BITS & PIECES OF INSULATION WILL REQUIRE BEING FITTED INTO THESE GAPS AT HEAD, JAMBS & SILLS.
  - PRIOR TO CLOSURE OF SURROUNDING CONSTRUCTION THE G.C. SHALL PROVIDE THE ARCHITECT WITH ADEQUATE NOTICE FOR REVIEW OF ALL SUCH CONDITIONS.
  - NON-EXPANDING SPRAY FOAM FILLER MAY BE PERMISSIBLE FOR SEALING THE BUILDING PERIMETER, IF APPROVED BY THE ARCHITECT.
  - ACP (ALUMINUM COMPOSITE PANEL) SYSTEM SHALL INCLUDE MFR APPROVED ALUM. EXTRUDED ATTACHMENT SYSTEM, INCLUDING FIRE TREATED BLOCKING OR OTHER APPROVED SUBSTRATE SHALL BE PROVIDED WHERE NEEDED (EVEN IF NOT SHOWN), AS PART OF THE SYSTEM.
  - ZINC "REVEAL PANEL" SYSTEM AND ZINC "FLAT-LOCK TILE" SYSTEM SHALL INCLUDE THE ATTACHMENTS TO BACKUP WALL, COMPOSED OF GALV. METAL DECK & WELDED PLATE PER DETAILS. PROVIDE MFR APPROVED ST. STEEL ATTACHMENT SYSTEM OF ZOLIPS, FASTENERS & THE LIKE.
  - ZINC CLADDING SYSTEMS SHALL INCLUDE WINDOW - HEAD, JAMB, TRIM, CLOSURE & SILL FLASHINGS w/DRIP PER MFR. SEE SPECS FOR FINISH & OTHER REQUIREMENTS.
  - PRIOR TO INSTALLATION OF ANY ZINC CLADDING SYSTEM THE MASONRY, STONE OR CAST STONE ADJACENT OR NEAR MUST BE FULLY WASHED DOWN.
  - HOLLOW STRUCTURAL STEEL MEMBERS & NESTED STEEL STUDS (CFMF) CONTAINED WITHIN THE EXTERIOR BACKUP WALL SHALL BE INTERNALLY INSULATED (PRIOR TO ERECTION) TO MAINTAIN CONTINUITY OF THE BUILDING ENVELOPE INSULATION.
  - PROVIDE SILL NOSE FOR ALL CMU WALLS WITH EXPOSED OUTSIDE CORNERS. REFER TO DETAIL 3C / A803 (EVEN IF NOT SHOWN IN DETAILS).



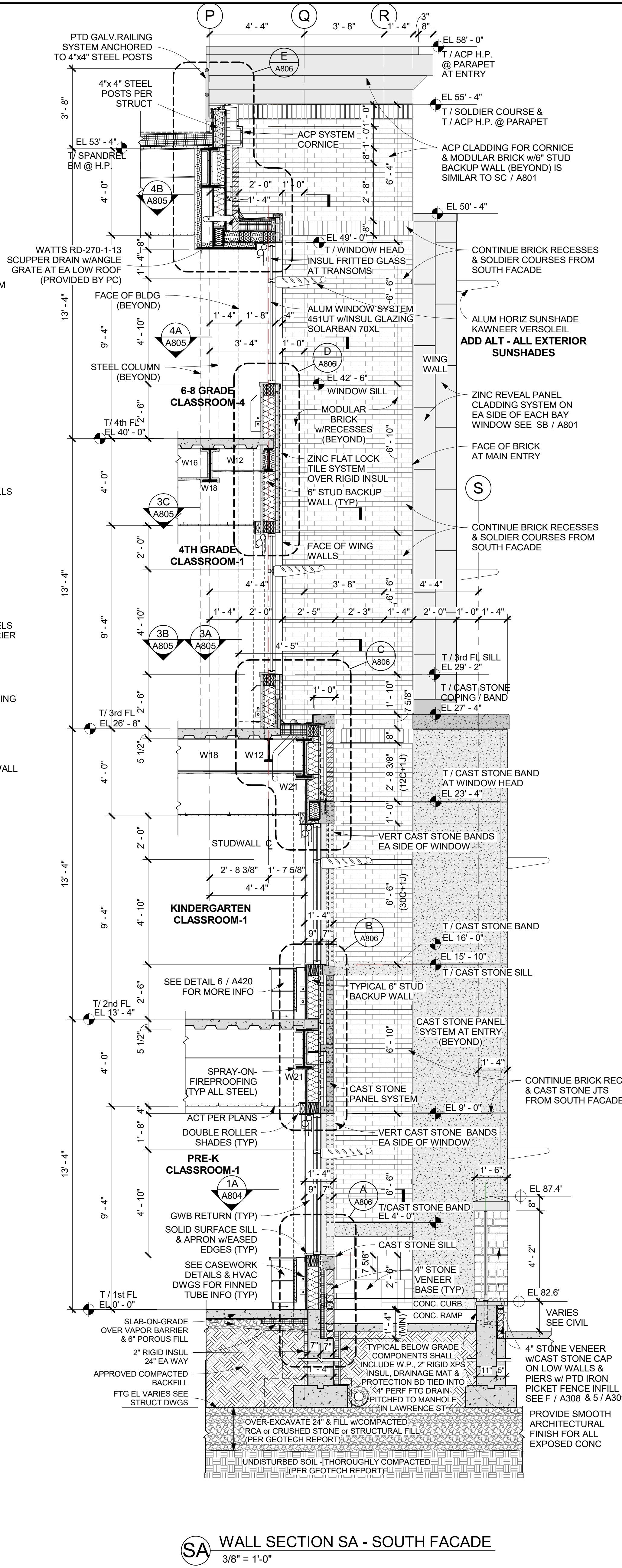
ALL LEGAL DESIGN, COPYRIGHT AND TRADEMARK NOTICES AND NOTICES OF PROPRIETARY RIGHTS ARE OWNED BY AND ARE THE PROPERTY OF KG+D ARCHITECTS, PC. NO PART OF THIS DRAWING OR ANY INFORMATION CONTAINED HEREIN IS TO BE REPRODUCED OR TRANSMITTED IN ANY FORM OR BY ANY MEANS, ELECTRONIC OR MECHANICAL, INCLUDING PHOTOCOPYING, RECORDING, OR BY ANY INFORMATION STORAGE AND RETRIEVAL SYSTEM, WITHOUT THE WRITTEN PERMISSION OF KG+D ARCHITECTS, PC.

WRITTEN PERMISSION ON THIS DRAWING SHALL HAVE PRECEDENCE OVER ANY ORAL STATEMENTS OR ACTIONS BY ANY PERSONS. THE ARCHITECT'S LIABILITY IS LIMITED TO THE PROFESSIONAL SERVICES PROVIDED BY THE ARCHITECT AND DOES NOT INCLUDE THE DESIGN OF STRUCTURAL, MECHANICAL, ELECTRICAL, OR OTHER SPECIALTY SYSTEMS, UNLESS SPECIFICALLY NOTED OTHERWISE ON THIS DRAWING.

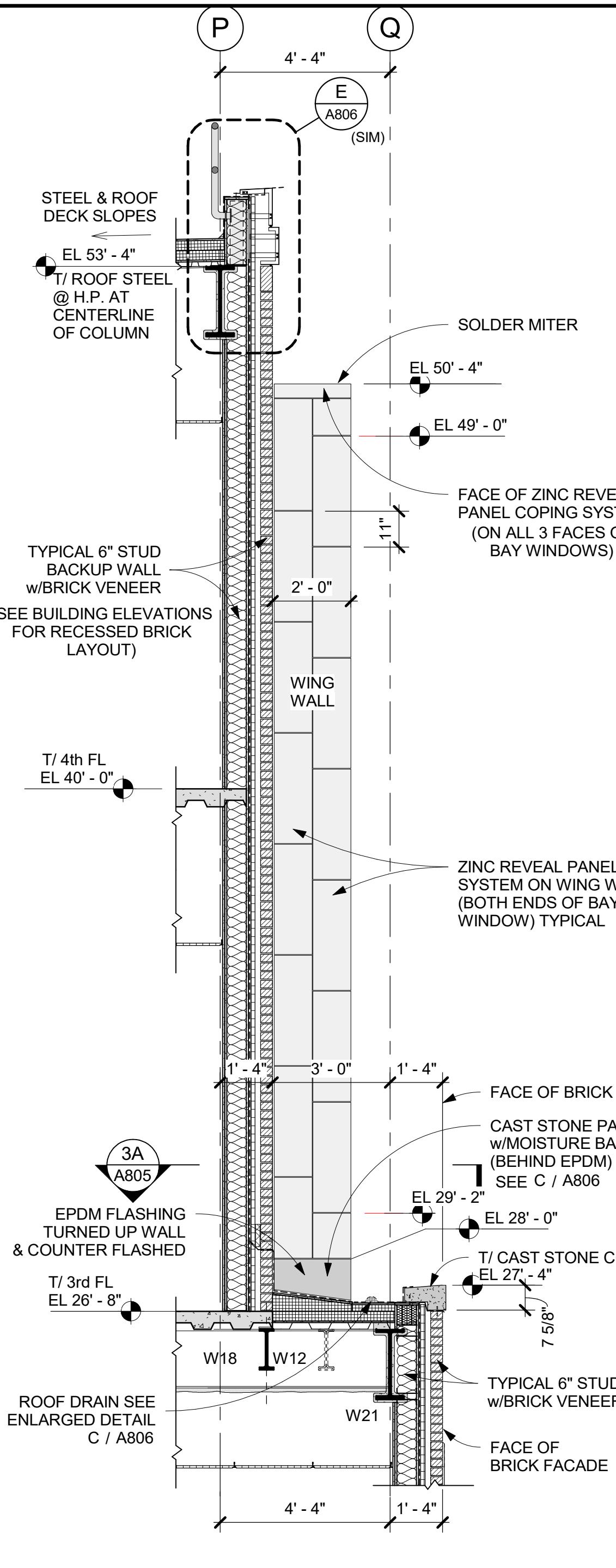
Professional Seal

No.	Date	Issue
1	11/01/2021	ISSUE FOR BID
2	07/14/2021	CONSTRUCTION DOCS - NYSED
3	12/15/2020	DESIGN DEVELOPMENT

Scale: AS NOTED  
 Drawn / Checked: --  
 Sheet Number: A801



**SA WALL SECTION SA - SOUTH FACADE**  
 3/8" = 1'-0"



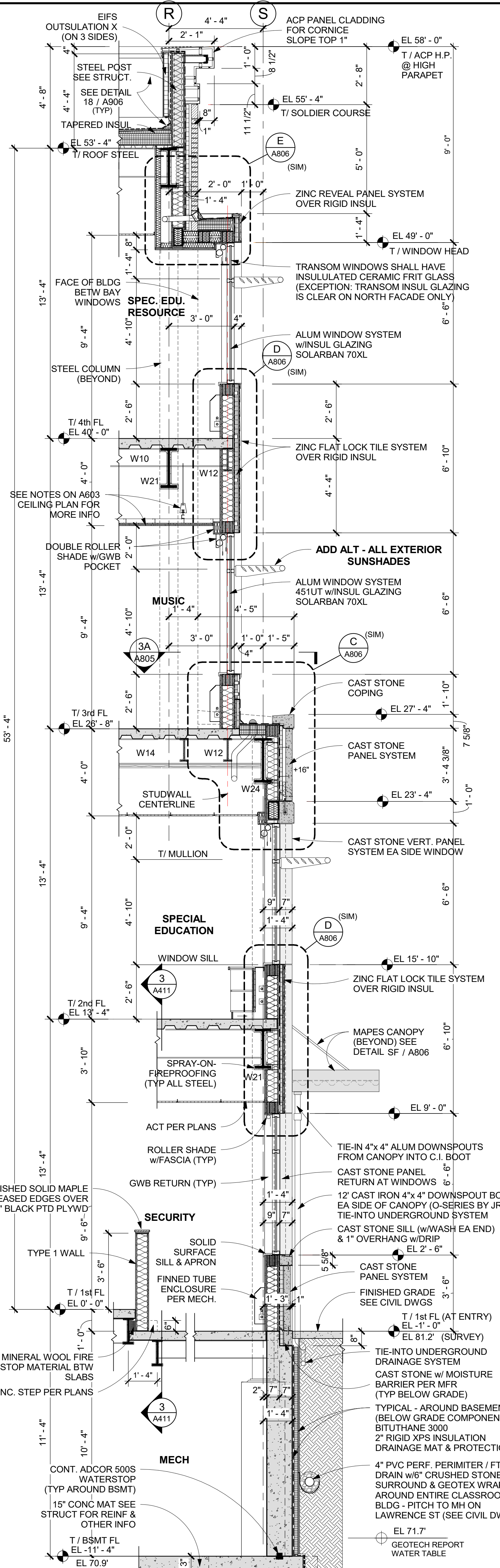
**SB WALL SECTION SB @ 3rd FL LOW ROOF**  
 3/8" = 1'-0"

- TYPICAL ROOF COMPONENTS:**
- EPDM MEMBRANE ROOFING (PER SPECS)
  - (EXTEND UP & OVER ALL ROOF PARAPETS &/OR BACKUP WALLS - USE 5" x 9" RPT STRIPS AT PERIMETER)
  - OVER 1/2" DENSDECK PRIME PROTECTION BOARD OVER TAPERED INSULATION - WHERE INDICATED (PITCHED TO DRAINS) 1/4" PER FT PITCH (MIN)
  - 1/2" PER FT PITCH (MIN) AT CRICKETS
  - OVER 6" RIGID POLYISO INSULATION - BASE MINIMUM (USE 2 LAYERS OF 3" INSUL)
  - OVER 1/2" DENSDECK PRIME SHEATHING OVER AIR VAPOR BARRIER PER SPEC
  - OVER METAL DECK PER STRUCTURAL DWGS (ALSO SEE A205)
- TYPICAL STUD BACKUP WALL COMPONENTS:**
- ENGINEERED (DELEGATED DESIGN BY THE GENERAL CONTRACTOR) 6" STUD (20 GA MIN) BACKUP WALL (U.N.O.)
  - USE 5/8" TYPE "X" DENSGLASS GOLD SHEATHING (O.F.)
  - PROVIDE AIRBLOC 31MR (AIR VAPOR BARRIER) OVER SHEATHING TO THICKNESS REQ'D BY MFR (SEE SPECS FOR BRICK TIE SYSTEM)
  - (SEE SPECS FOR CLADDING SYSTEMS)
  - PROVIDE 5 1/2" BATT INSUL. R21 MINERAL WOOL IN 6" METAL STUD CAVITY
  - USE 1 LAYER - 5/8" TYPE "X" SHEETROCK ON (I.F.) OF STUDS ALSO - USE 1 LAYER - 5/8" TYPE "X" ABUSE RESISTANT SHEETROCK ON THE (I.F.) INNER-MOST FACE
  - USE 2 1/2" XPS (O) RIGID INSULATION IN AIRSPACE (U.N.O.)
  - SEE EXTERIOR ELEVATIONS & DETAILS FOR BUILDING CLADDING SYSTEMS

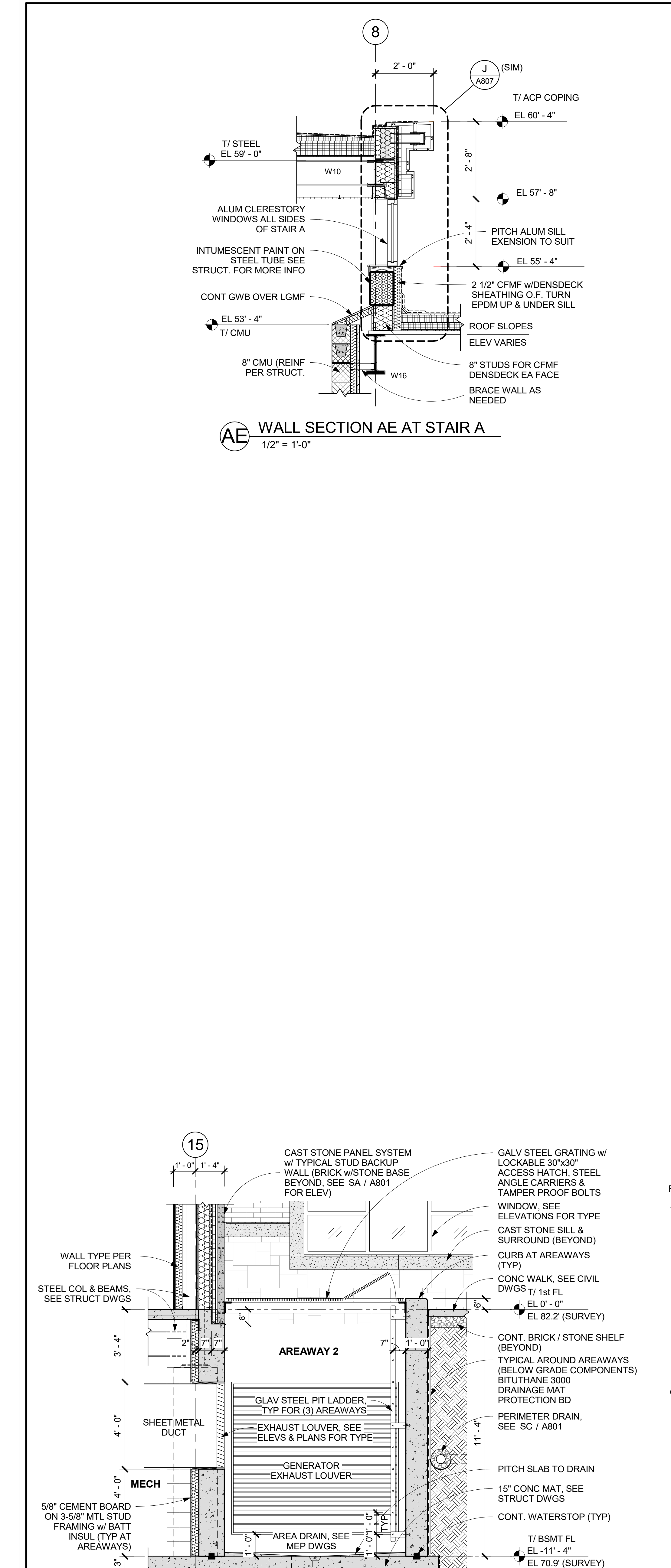
AT ALL BRICK AIR SPACE TERMINATIONS & BELOW ALL CAST STONE SILLS OR WHERE SHOWN PROVIDE CONT. THRU-WALL FLASHING & CAP FLASHING AS REQ'D & BELOW CAST STONE SILLS (SEE SPECS FOR MORE INFO)

USE WEEPS @ 24" o.c. w/ CONT. CAVITY MATE MORTAR DAM & 3/8" PITCH TO MH ON LAWRENCE ST (SEE CIVIL DWGS)

FLASHING INFO & ENLARGED TYPICAL DETAILS & SPECS



**SC WALL SECTION SC - SOUTH FACADE AT ENTRY**  
 3/8" = 1'-0"



**SD WALL SECTION SD - SOUTH FACADE AT AREAWAY**  
 3/8" = 1'-0"