

NOTE: ALL LOCAL LEGAL REQUIREMENTS ARE PLANNED AND INDICATED OR REPRESENTED BY THIS DRAWING AND ARE OWNED BY AND ARE THE PROPERTY OF THE CLIENT. ANY CHANGES TO THESE REQUIREMENTS SHALL BE THE RESPONSIBILITY OF THE CLIENT. THE ARCHITECT SHALL BE NOTIFIED OF ANY CHANGES TO THESE REQUIREMENTS AND CONDITIONS BEFORE PROCEEDING WITH FABRICATION. WRITTEN DIMENSIONS ON THIS DRAWING SHALL PRECEDE OVER SCALED DIMENSIONS. CONTRACTOR SHALL VERIFY ALL ACTUAL DIMENSIONS AND CONDITIONS ON THE JOB AND THE ARCHITECT MUST BE NOTIFIED OF ANY VARIATIONS FROM DIMENSIONS AND CONDITIONS SHOWN. SHOP DETAILS MUST BE SUBMITTED TO THIS OFFICE FOR APPROVAL BEFORE PROCEEDING WITH FABRICATION. ALTERATIONS BY ANY PERSON IN ANY WAY OF ANY ITEM CONTAINED ON THIS DOCUMENT, UNLESS ACTING UNDER THE DIRECTION OF THE LICENSED PROFESSIONAL ENGINEER, SHALL BE VOID. THIS DRAWING IS A REGULATORY DOCUMENT AND SHALL BE USED IN ACCORDANCE WITH THE NEW YORK STATE ENGINEERING AND SURVEYING LAW AND THE NEW YORK STATE ARCHITECTURE AND PROFESSIONAL DESIGNERS LAW. COPYRIGHT © 2021 KG+D ARCHITECTS, PC ALL RIGHTS RESERVED.

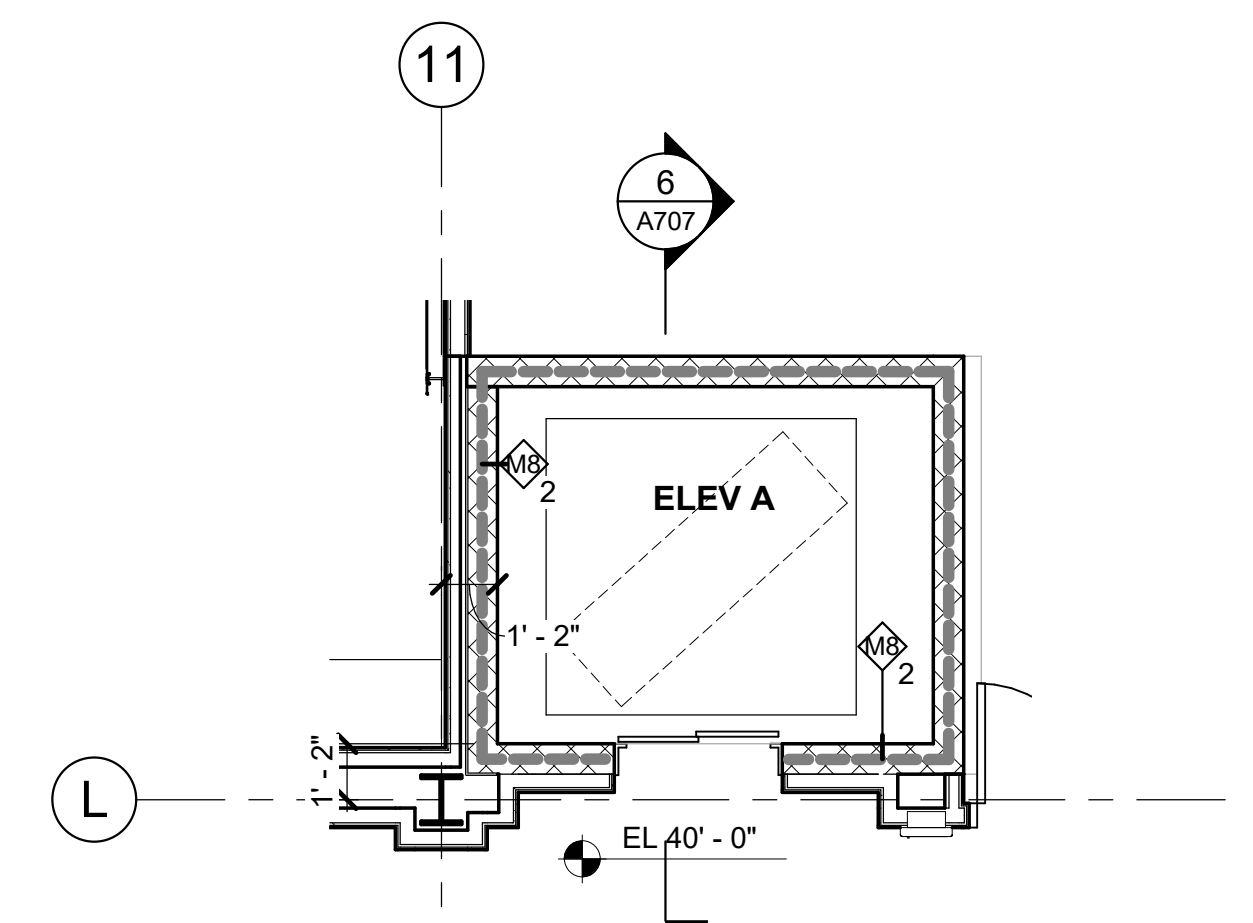
Professional Seal

No.	Date	Issue
5	11/01/2021	ISSUE FOR BID
3	07/14/2021	CONSTRUCTION DOCS - NYSED

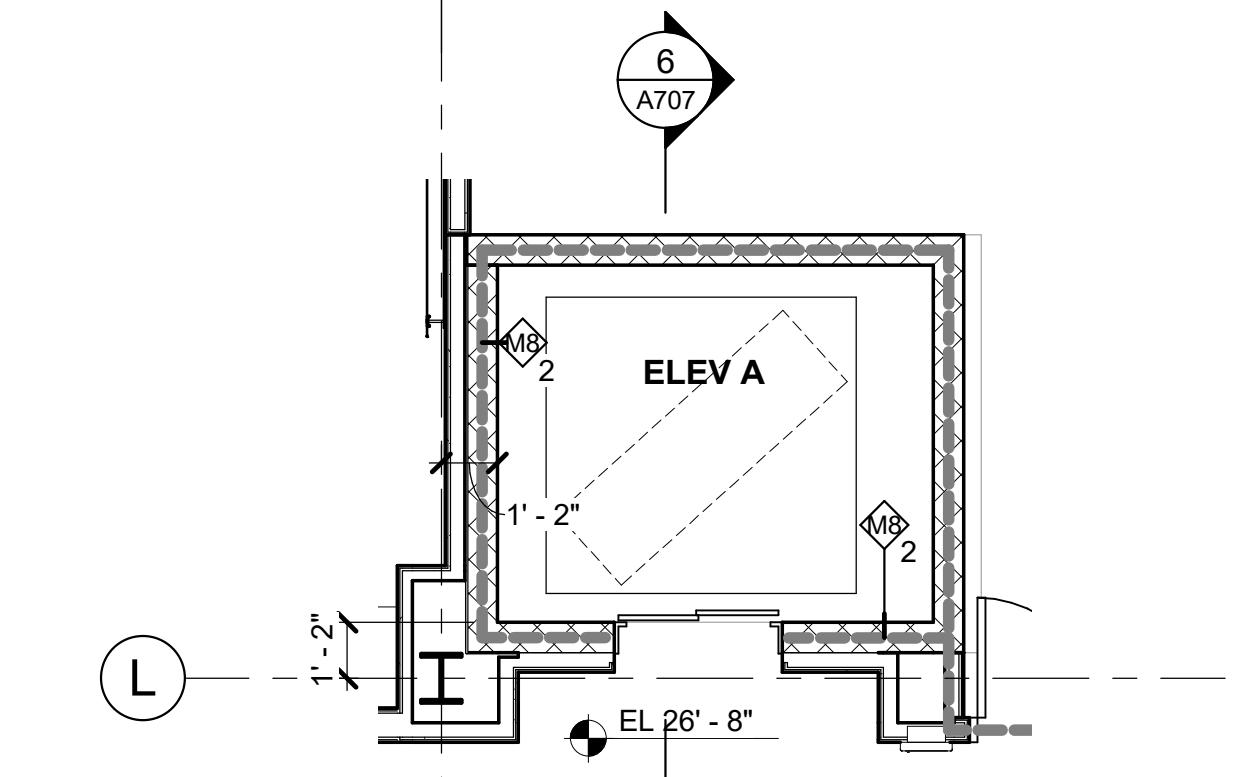
ELEVATOR PLANS & SECTIONS

Job No.	2019-1026	Date	07/14/2021
Scale	AS NOTED	Drawn / Checked	- / -

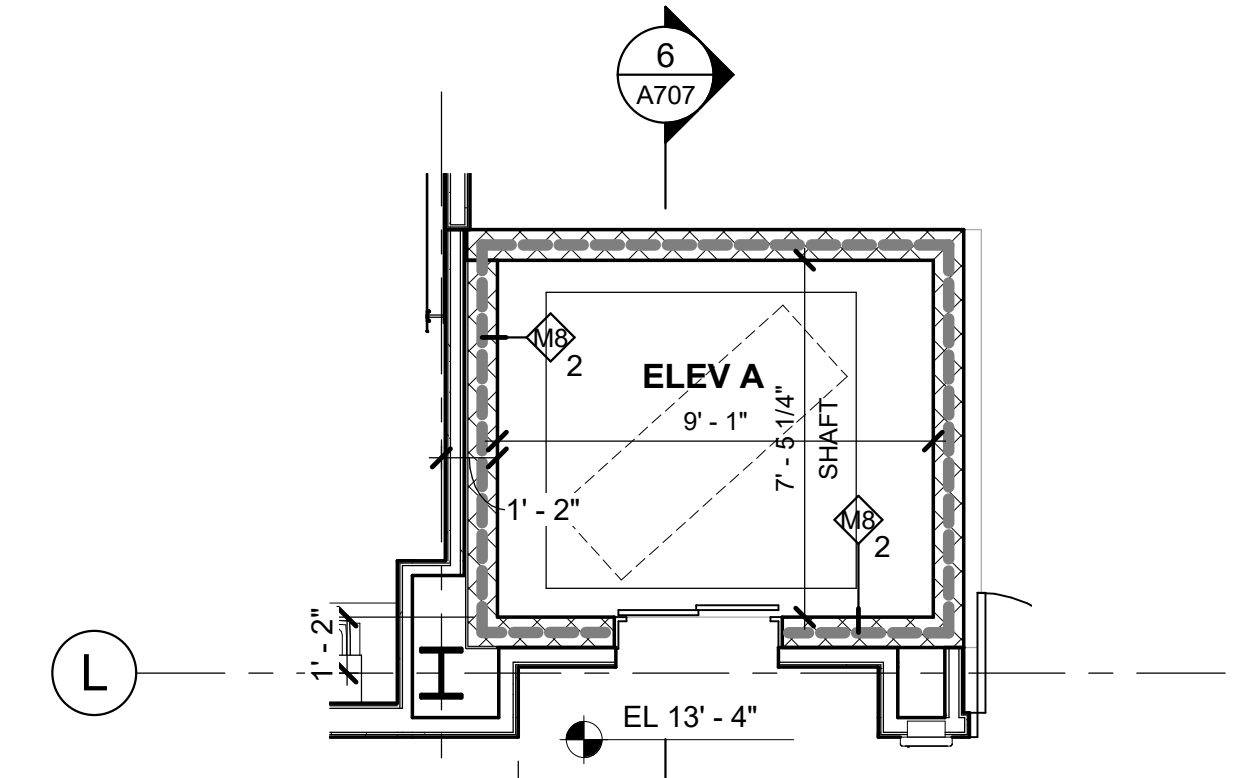
Sheet Number
A707



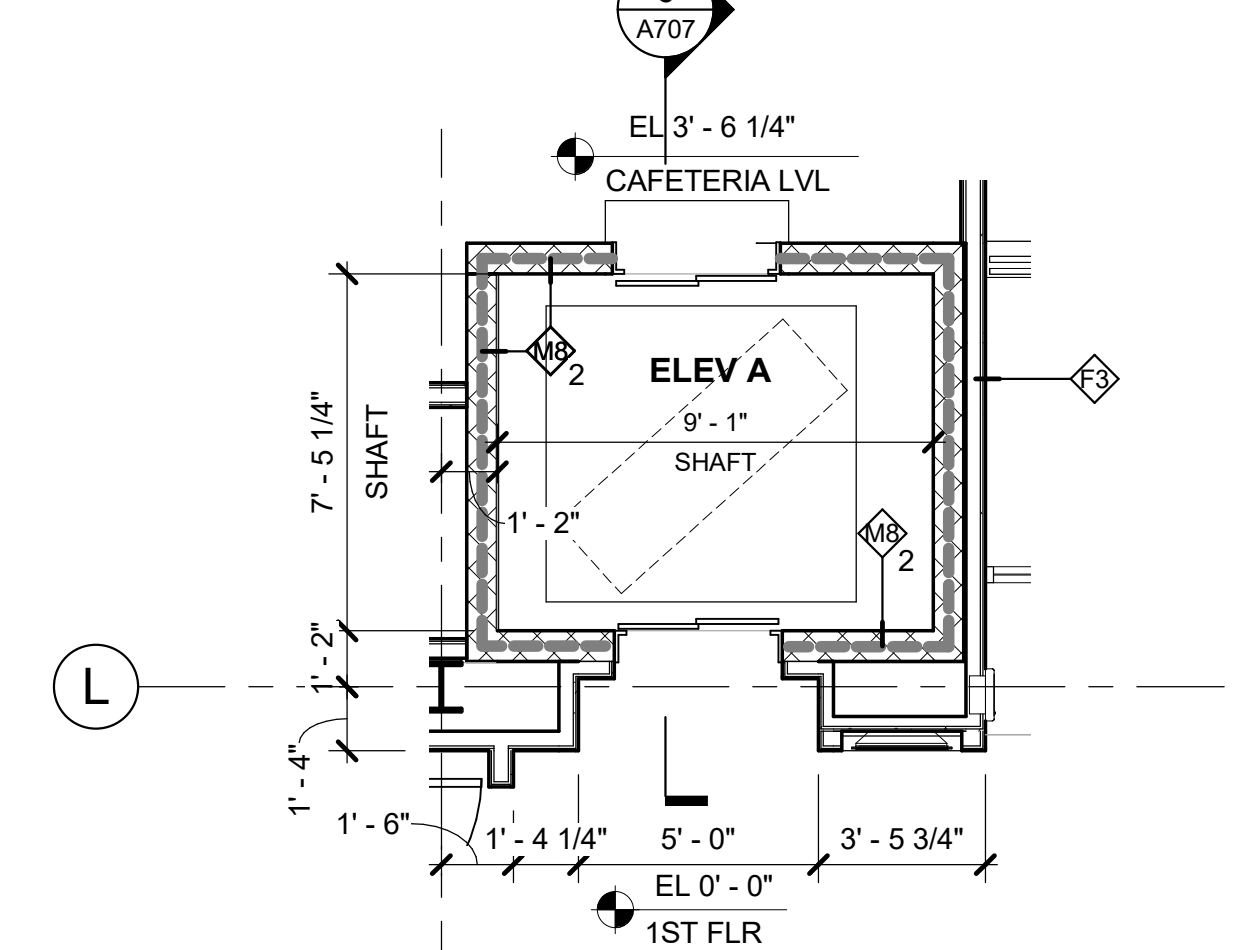
5 4th FL ELEVATOR (A) PLAN
 1/4" = 1'-0"



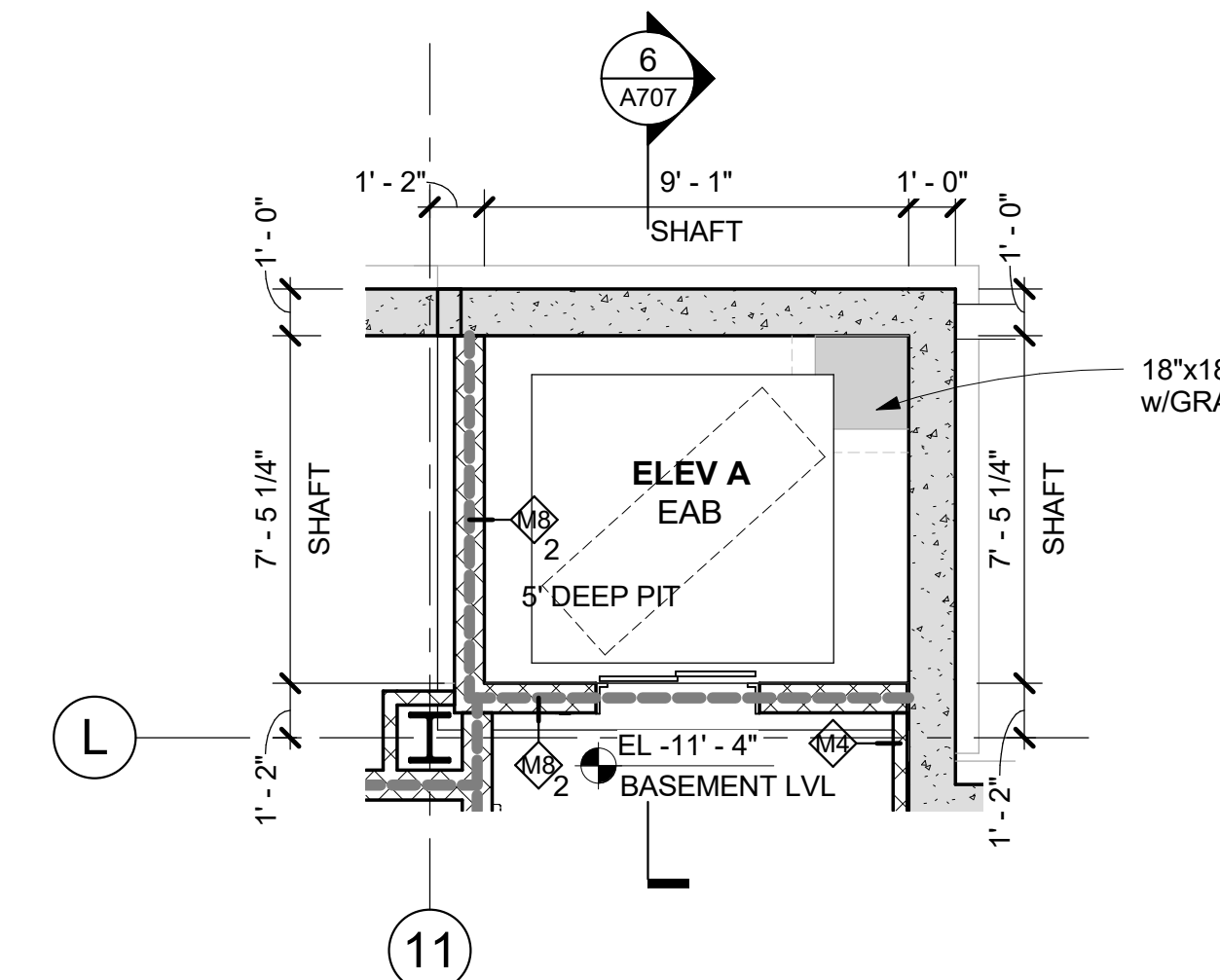
4 3rd FL ELEVATOR (A) PLAN
 1/4" = 1'-0"



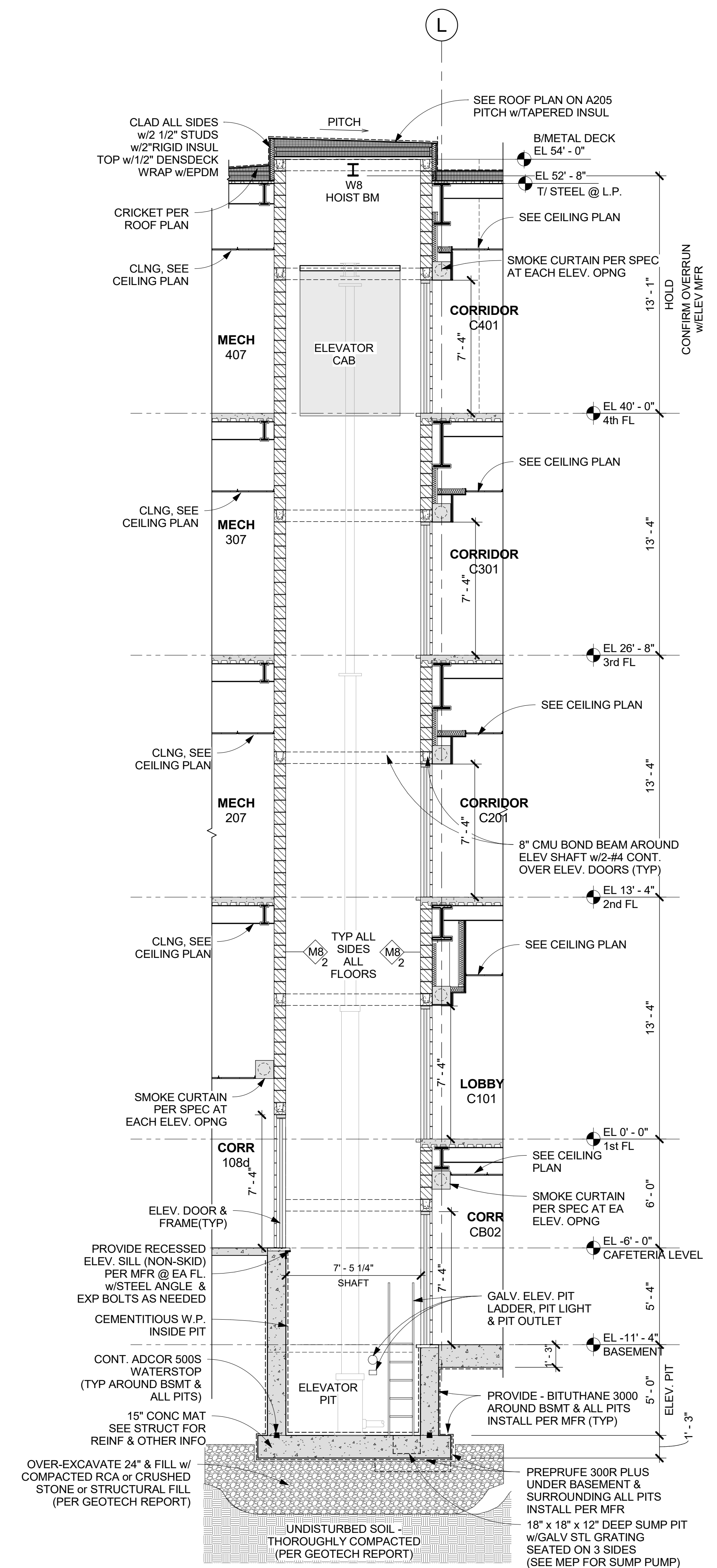
3 2nd FL ELEVATOR (A) PLAN
 1/4" = 1'-0"



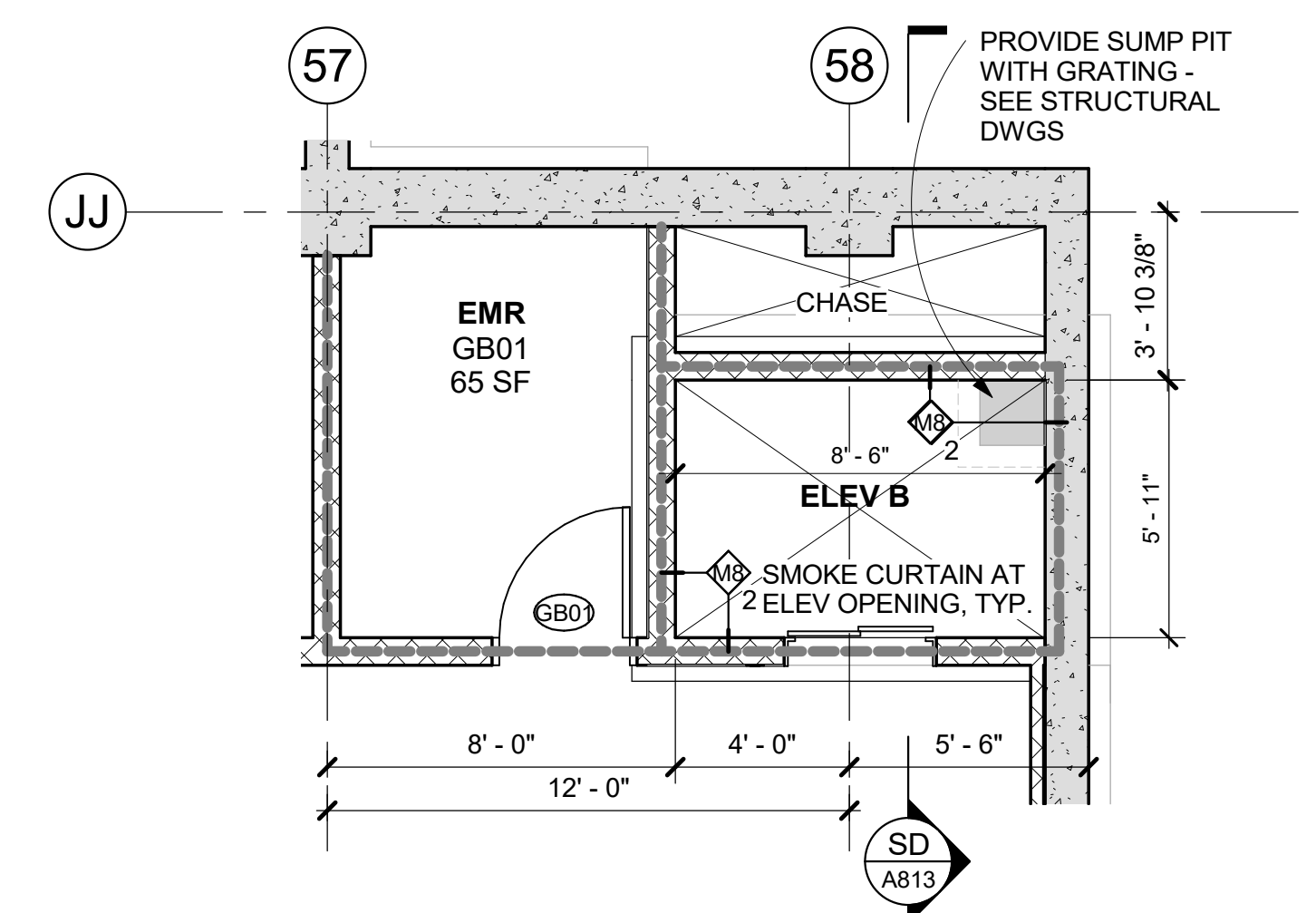
2 1st FL ELEVATOR (A) PLAN
 1/4" = 1'-0"



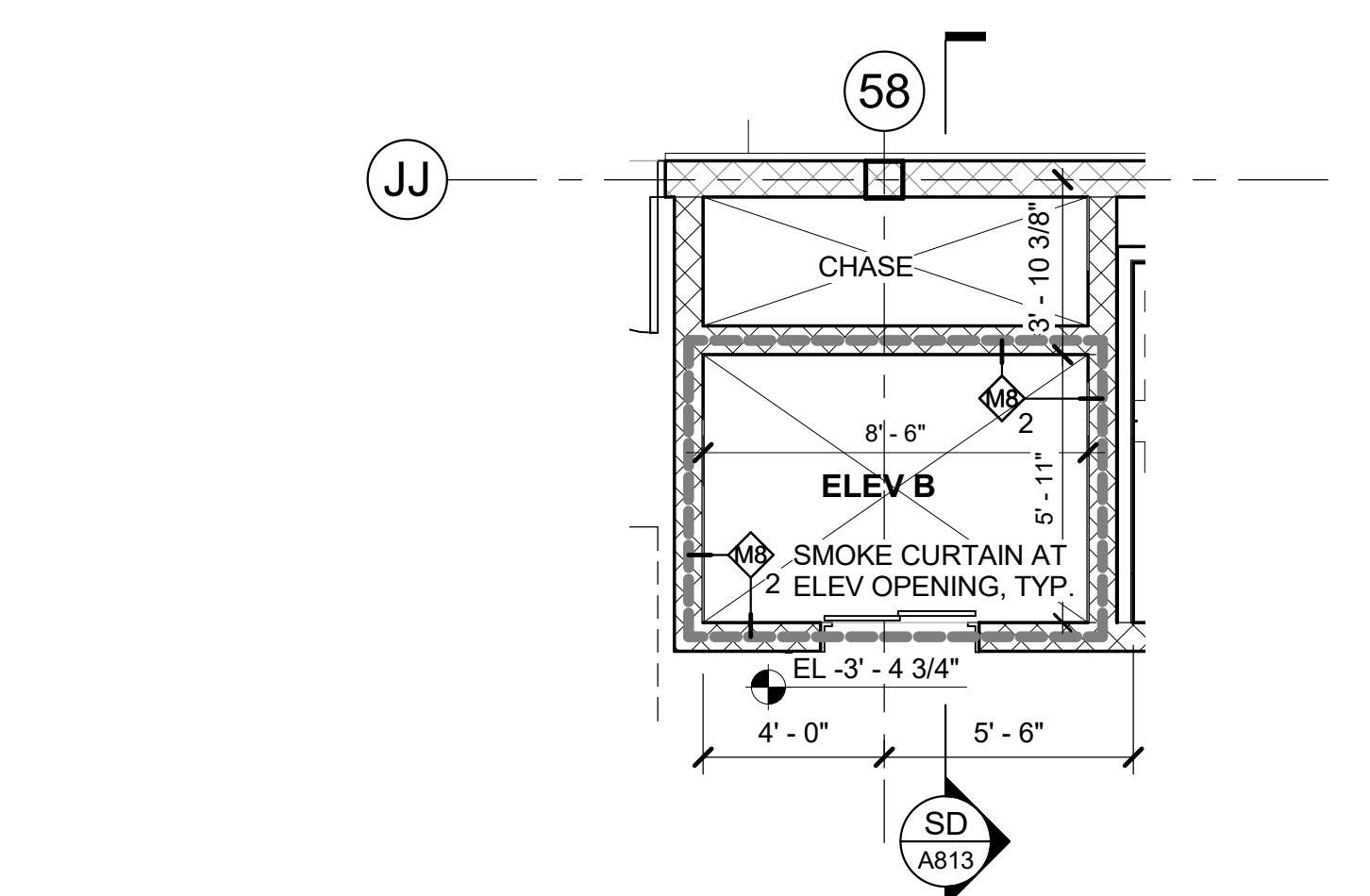
1 BASEMENT ELEVATOR (A) PLAN
 1/4" = 1'-0"



6 SECTION @ ACADEMIC BUILDING ELEVATOR (A)
 1/4" = 1'-0"



8 COMMUNITY BLDG - BASEMENT ELEVATOR (B) PLAN
 1/4" = 1'-0"



9 COMMUNITY BLDG - 1st FL ELEVATOR (B) PLAN
 1/4" = 1'-0"