

NEW COMMUNITY SCHOOL 35 AT ST DENIS SITE

YONKERS JOINT SCHOOLS
CONSTRUCTION BOARD
121 McLean Avenue
Yonkers, NY 10705

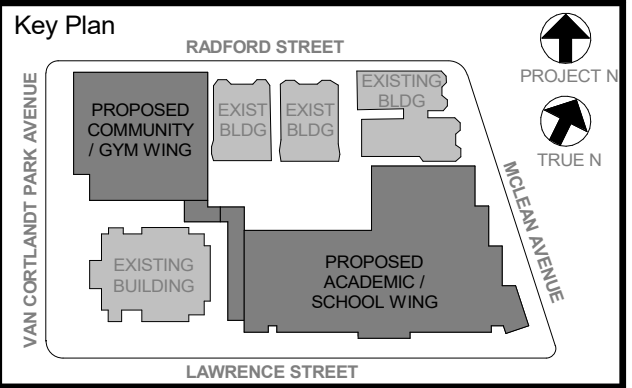
KG+D listen imagine build
ARCHITECTS, PC
285 MAIN STREET - MOUNT KISCO, NEW YORK 10549
P:914.666.5900 KGARCHITECTS.COM

NY SED PROJECT CONTROL NO.
66-23-00-01-0-346-001

CONSTRUCTION DOCUMENTS

CLNG GENERAL NOTES

- CEILING GRIDS SHALL BE CENTERED WITHIN THE ROOM OR SPACE
- CEILING MOUNTED ELEMENTS (I.E. LIGHT FIXTURES, EXIT SIGNS, HVAC REGISTERS, SPRINKLER HEADS, SPEAKERS, WIRELESS ACCESS POINTS, ETC) SHALL BE CENTERED IN CEILING TILES
- SEE E601 FOR LIGHT FIXTURE SCHEDULE
- CEILING HEIGHTS SHOWN IN PLANS, SECTIONS, & DETAILS SHALL TAKE PRECEDENCE OVER HEIGHTS INDICATED ON SCHEDULES
- EXACT LOCATION & ELEVATION OF CEILING MOUNTED ELEMENTS IN SUPPORT SPACES (I.E. MECHANICAL, ELECTRIC, DATA ROOMS, ETC) SHALL BE COORDINATED WITH ARCHITECT & RESPECTIVE CONTRACTORS/OWNER
- LIGHT FIXTURE CENTERED IN ROOM/CEILING
 COORDINATE W/ EC
 LIGHT FIXTURE TAG
- SEE MEP DRAWINGS FOR:
 - CEILING SUPPLY REGISTER
 - CEILING RETURN REGISTER
 - WALL MOUNTED SUPPLY REGISTER
 - WALL MOUNTED RETURN REGISTER
 - VRF DUCTLESS HEAT RECOVERY INDOOR UNIT
 - INDOOR DUCTLESS AIR HANDLING UNIT
 - CABINET HEATER
 - SPRINKLER HEAD
 - SECURITY CAMERA (BY OWNER, NIC)
 - CEILING / WALL MOUNTED EXIT SIGN



NOTE: ALL LEGAL DESIGN ARRANGEMENTS ARE PLANNED AND INDICATED OR REPRESENTED BY THIS DRAWING ARE OWNED BY AND ARE THE PROPERTY OF YONKERS JOINT SCHOOLS ARCHITECTS, PC AND ARE HEREBY GRANTED FOR USE ON THIS PROJECT. NONE OF SUCH LEGAL DESIGNS, ARRANGEMENTS OR PLANS SHALL BE USED BY OR DECIDED TO ANY PURPOSE WHATSOEVER WITHOUT THE WRITTEN PERMISSION OF JGSD.

WRITTEN DIMENSIONS ON THIS DRAWING SHALL HAVE PRECEDENCE OVER UNLabeled DIMENSIONS CONTRACTOR SHALL VERIFY ALL ACTUAL DIMENSIONS AND CONDITIONS ON THE JOB AND THE ARCHITECT MUST BE NOTIFIED OF ANY VARIATIONS FROM DIMENSIONS AND CONDITIONS SHOWN. SHOP DETAILS MUST BE SUBMITTED TO THIS OFFICE FOR APPROVAL BEFORE PROCEEDING WITH FABRICATION.

ALTERATIONS BY ANY PERSON IN ANY WAY OF ANY ITEM CONTAINED ON THIS DOCUMENT, UNLESS ACTING UNDER THE DIRECTION OF THE LICENSED PROFESSIONAL ENGINEER, ARCHITECT, OR PROFESSIONAL DESIGNER, IS A VIOLATION OF COMPROMISES GOVERNMENT & YONKERS ARCHITECTS, PC.

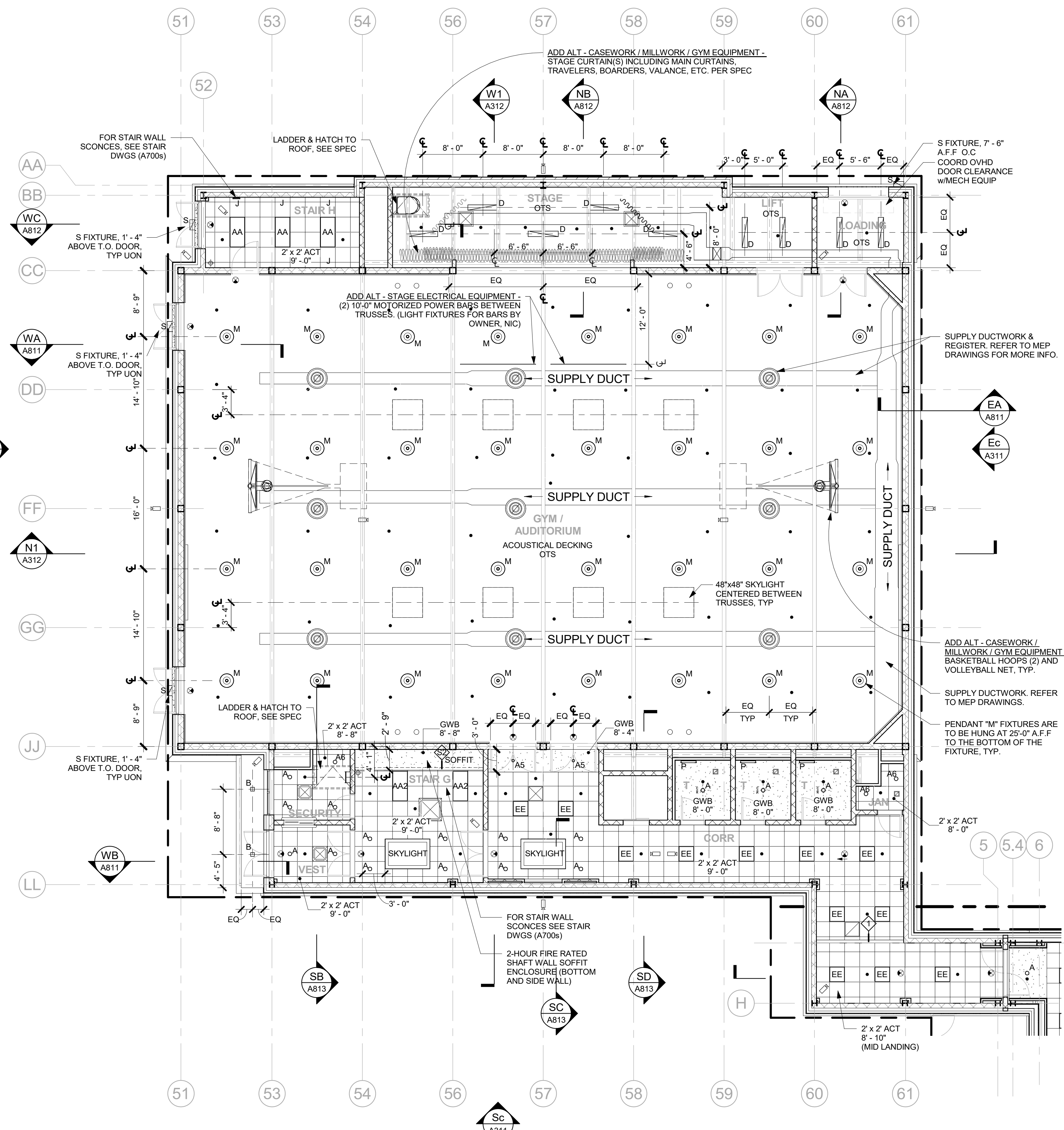
Professional Seal

| | | |
|-----|------------|---------------------------|
| No. | Date | Issue |
| 5 | 11/01/2021 | ISSUE FOR BID |
| 3 | 07/14/2021 | CONSTRUCTION DOCS - NYSED |
| 2 | 12/15/2020 | DESIGN DEVELOPMENT |

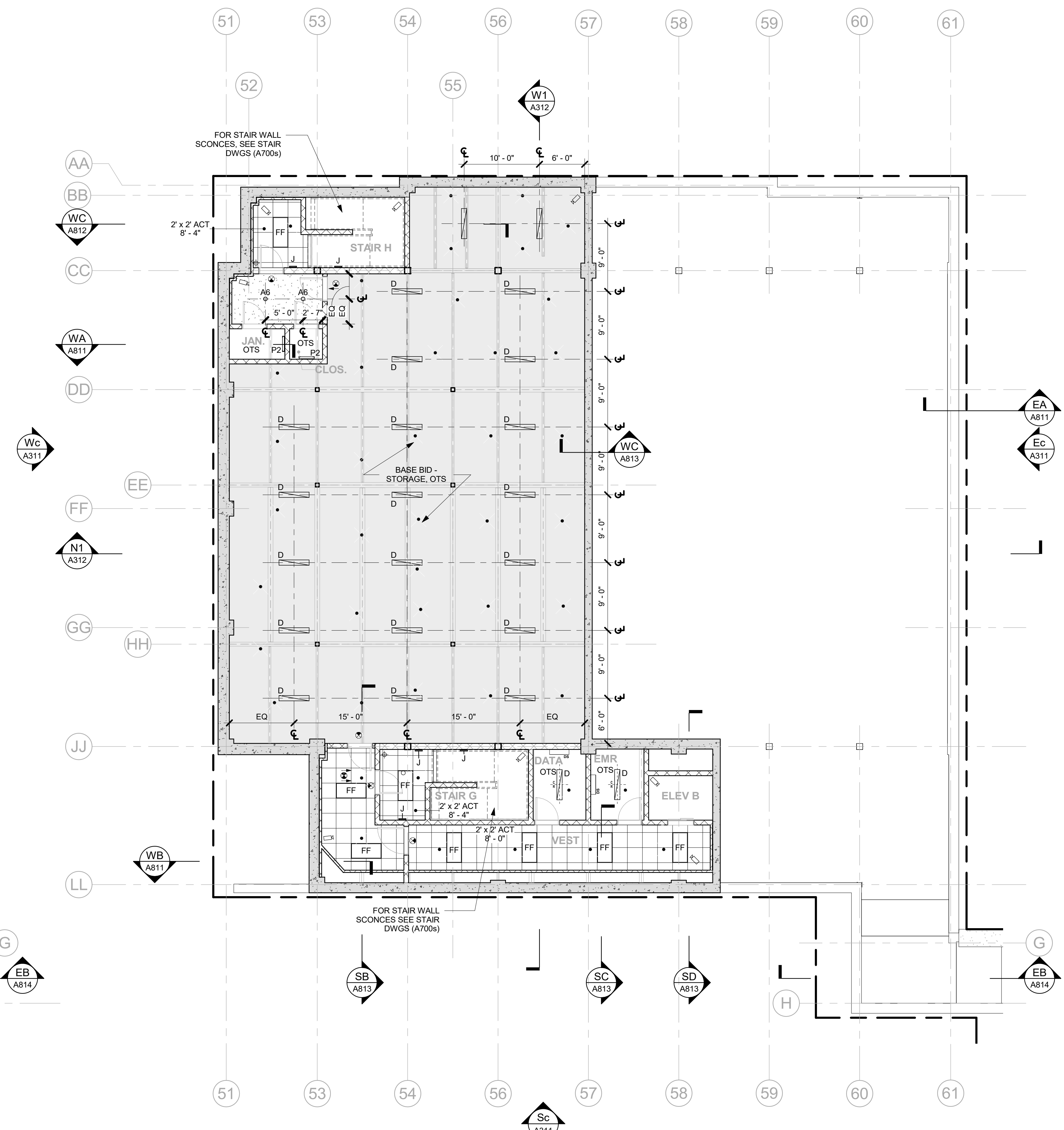
COMMUNITY WING BASEMENT & 1st FLOOR REFLECTED CEILING PLANS

Job No. 2019-1026 Date 12/15/2020
Scale AS NOTED Drawn / Checked --

Sheet Number **A611**



1 COMMUNITY WING - 1st FLOOR CEILING PLAN
1/8" = 1'-0"



B COMMUNITY WING - BASEMENT CEILING PLAN
1/8" = 1'-0"