

**NEW COMMUNITY SCHOOL 35 AT ST DENIS SITE**

YONKERS JOINT SCHOOLS  
CONSTRUCTION BOARD  
121 McLean Avenue  
Yonkers, NY 10705



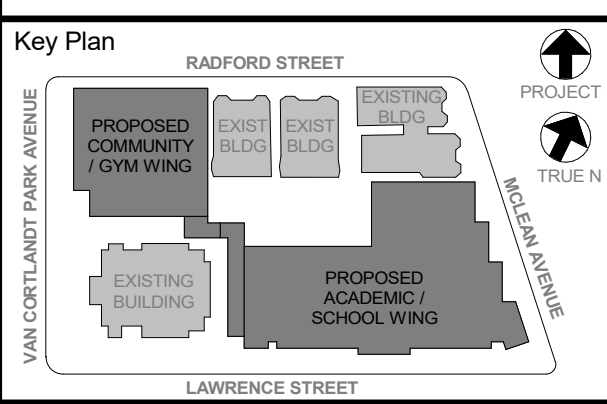
KG+D ARCHITECTS, PC  
265 MAIN STREET - MOUNT KISCO, NEW YORK 10549  
P:914.666.5900 KGDARCHITECTS.COM

NY SED PROJECT CONTROL NO.  
**66-23-00-01-0-346-001**

**CONSTRUCTION DOCUMENTS**

**CLNG GENERAL NOTES**

- CEILING GRIDS SHALL BE CENTERED WITHIN THE ROOM OR SPACE
- CEILING MOUNTED ELEMENTS (I.E. LIGHT FIXTURES, EXIT SIGNS, HVAC REGISTERS, SPRINKLER HEADS, SPEAKERS, WIRELESS ACCESS POINTS, ETC) SHALL BE CENTERED IN CEILING TILES
- SEE E601 FOR LIGHT FIXTURE SCHEDULE
- CEILING HEIGHTS SHOWN IN PLANS, SECTIONS, & DETAILS SHALL TAKE PRECEDENCE OVER HEIGHTS INDICATED ON SCHEDULES
- EXACT LOCATION & ELEVATION OF CEILING MOUNTED ELEMENTS IN SUPPORT SPACES (I.E. MECHANICAL, ELECTRIC, DATA ROOMS, ETC) SHALL BE COORDINATED WITH ARCHITECT & RESPECTIVE CONTRACTORS/OWNER
- LIGHT FIXTURE CENTERED IN ROOM/CEILING
  - COORDINATE W/ EC
  - LIGHT FIXTURE TAG
- SEE MEP DRAWINGS FOR:
  - ☒ CEILING SUPPLY REGISTER
  - ☒ CEILING RETURN REGISTER
  - ☒ WALL MOUNTED SUPPLY REGISTER
  - ☒ WALL MOUNTED RETURN REGISTER
  - ☒ VRF DUCTLESS HEAT RECOVERY INDOOR UNIT
  - ☒ INDOOR DUCTLESS AIR HANDLING UNIT
  - ☒ CABINET HEATER
  - SPRINKLER HEAD
  - ☒ SECURITY CAMERA (BY OWNER, NIC)
  - ☒ CEILING / WALL MOUNTED EXIT SIGN



NOTE: ALL LOCAL, STATE, FEDERAL AND NATIONAL CODES AND REGULATIONS OR REPRESENTED BY THIS DRAWING ARE OWNED BY AND ARE THE PROPERTY OF THE CLIENT. ANY REVISIONS, ADDITIONS, DELETIONS, OR MODIFICATIONS TO THIS DRAWING SHALL BE THE RESPONSIBILITY OF THE ARCHITECT. ANY REVISIONS OR CHANGES SHALL BE INDICATED BY A REVISION CIRCLE AND SHALL BE SUBMITTED TO THE CLIENT FOR APPROVAL BEFORE PROCEEDING WITH FABRICATION.

ALTERATIONS BY ANY PERSON, IN ANY WAY, OF ANY ITEM CONTAINED ON THIS DOCUMENT, UNLESS ACTING UNDER THE DIRECTION OF THE LICENSED ARCHITECT, ENGINEER, PROFESSIONAL DESIGNER, OR PROFESSIONAL CONSULTANT, SHALL BE PROHIBITED. ANY SUCH ALTERATIONS SHALL BE THE RESPONSIBILITY OF THE PERSON MAKING SUCH ALTERATIONS.

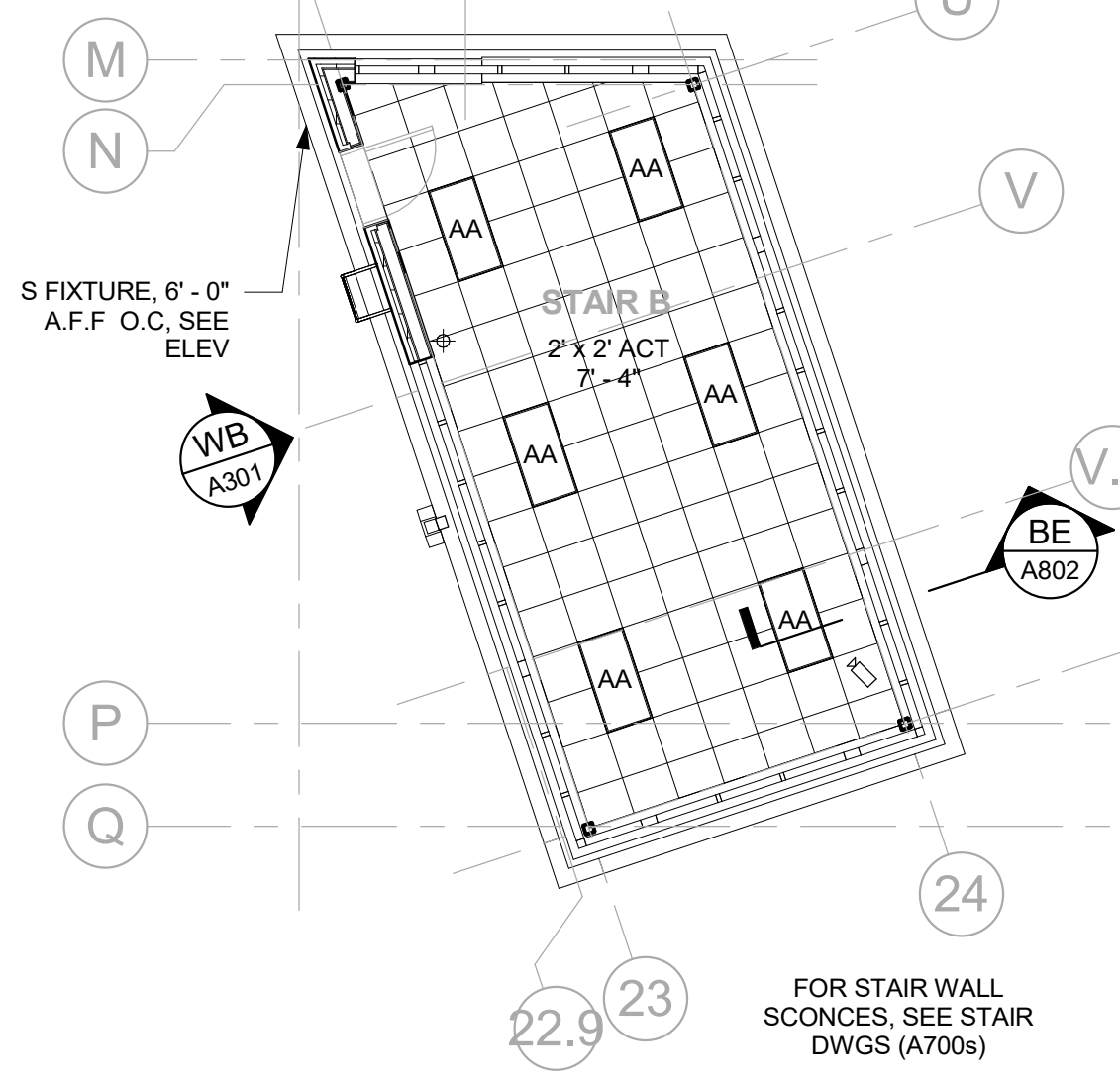
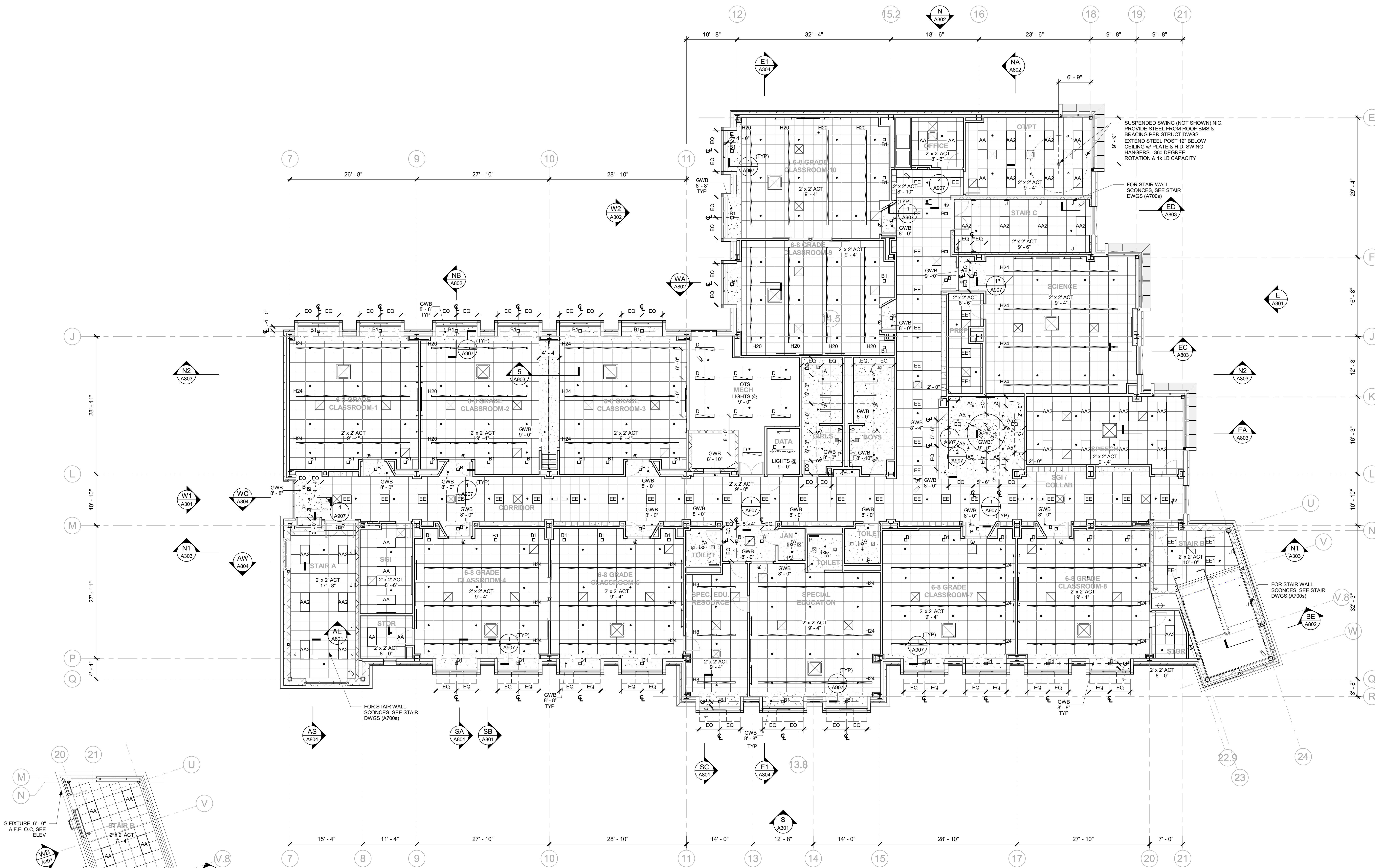
Professional Seal

No.	Date	Issue
5	11/01/2021	ISSUE FOR BID
3	07/14/2021	CONSTRUCTION DOCS - NYSED
2	12/15/2020	DESIGN DEVELOPMENT

**4th FLOOR CEILING PLAN**

Job No.	2019-1026	Date	12/15/2020
Scale	AS NOTED	Drawn / Checked	- / -

Sheet Number  
**A604**



5 STAIR B - STAIR CEILING PLAN  
1/8" = 1'-0"