

NEW COMMUNITY SCHOOL 35 AT ST DENIS SITE

YONKERS JOINT SCHOOLS
CONSTRUCTION BOARD
121 McLean Avenue
Yonkers, NY 10705

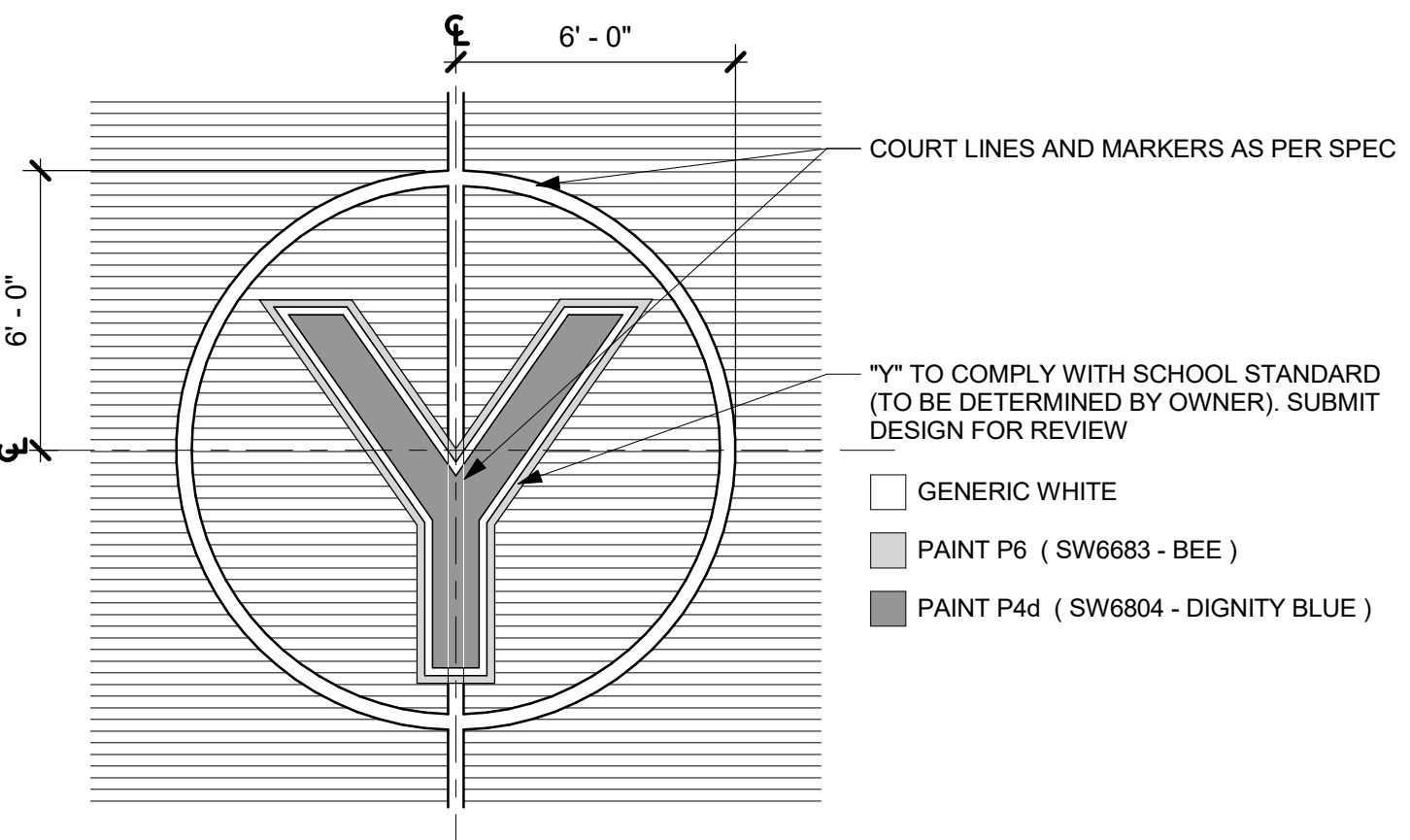


NY SED PROJECT CONTROL NO.
66-23-00-01-0-346-001

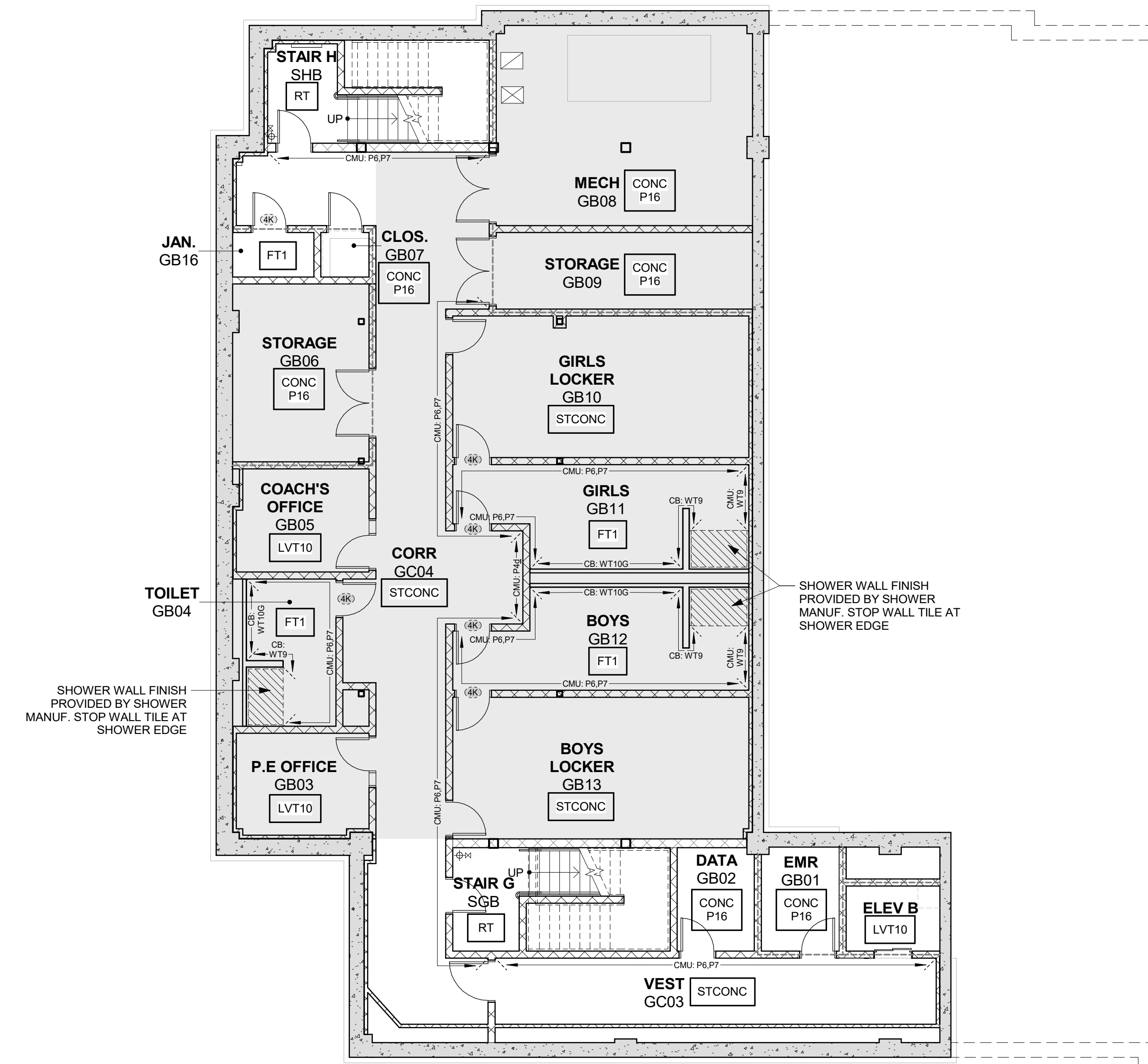
CONSTRUCTION DOCUMENTS

FINISH PLAN NOTES

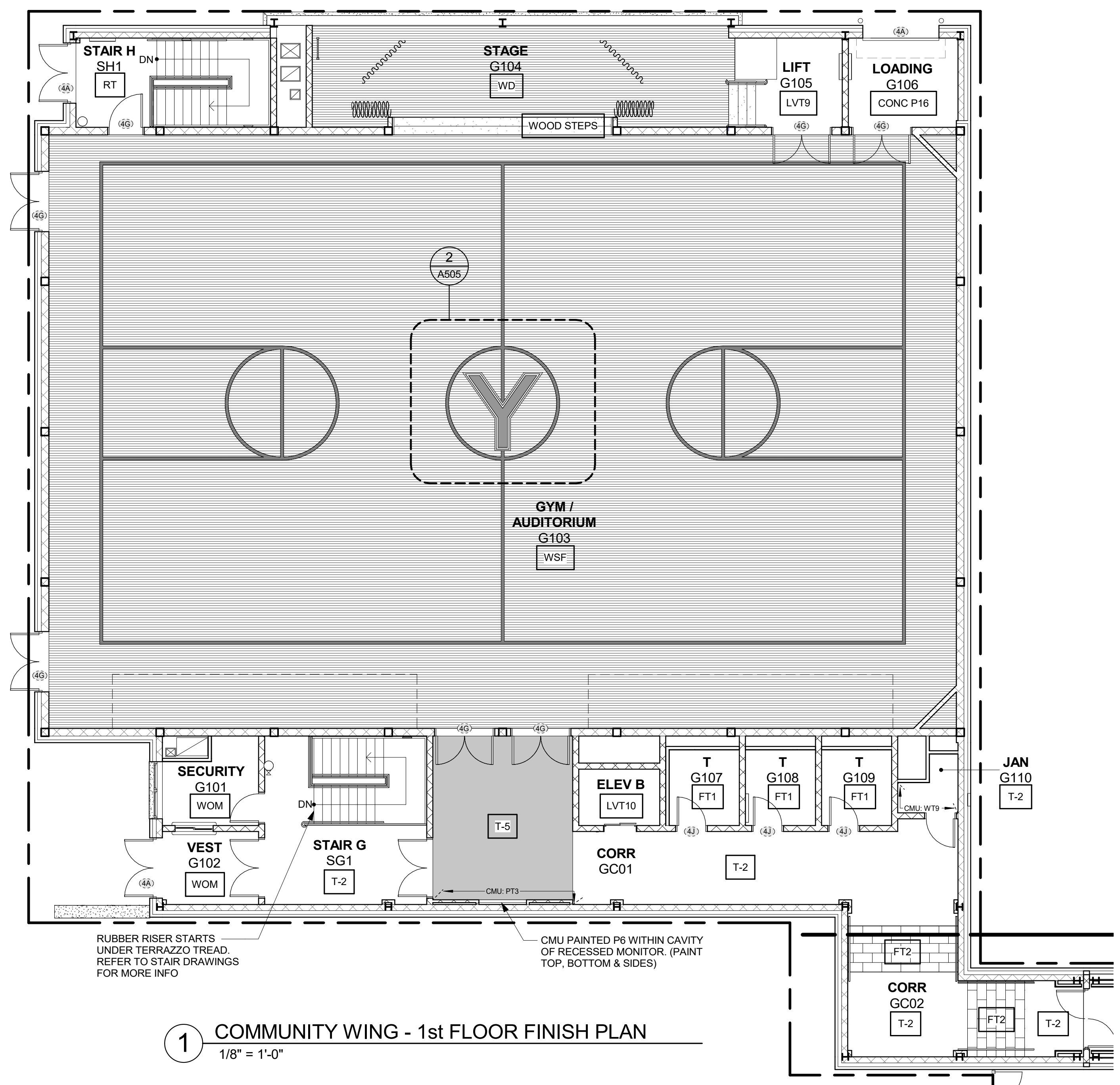
- REFER TO FINISH SCHEDULE AND SPEC FOR MORE INFORMATION.
- SEALANT REQUIRED ON FLOOR FINISH ITEMS PLACED ON SLAB-ON-GRADE. (THIS DOES NOT APPLY AT TERRAZZO FINISH LOCATIONS)
- ALL OUTSIDE CORNERS OF TILE TO HAVE SCHLUTER EDGES UNLESS OTHERWISE NOTED. SEE SPEC FOR MORE INFO.
- LVT11** TAG INDICATES FLOOR FINISH TYPE.
- ACCENT WALL LOCATIONS
TERMINATE ACCENT WALL AT CORNER
FINISH TYPE
WALL MATERIAL
- (44)** DENOTES SADDLE NUMBER SEE 44803 FOR INFORMATION ON DOOR SADDLE TYPES



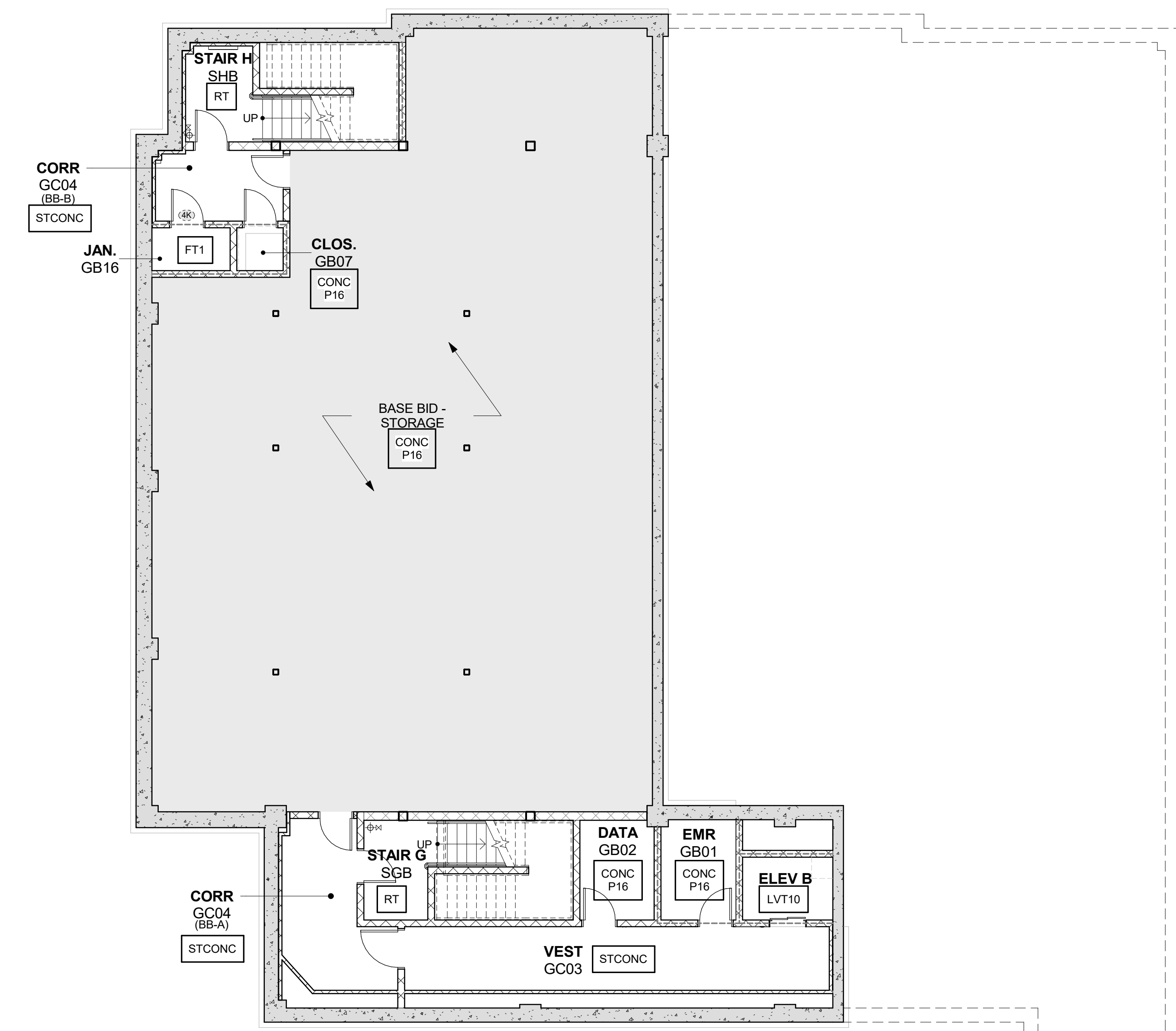
2 GYM FLOOR LOGO
1/4" = 1'-0"



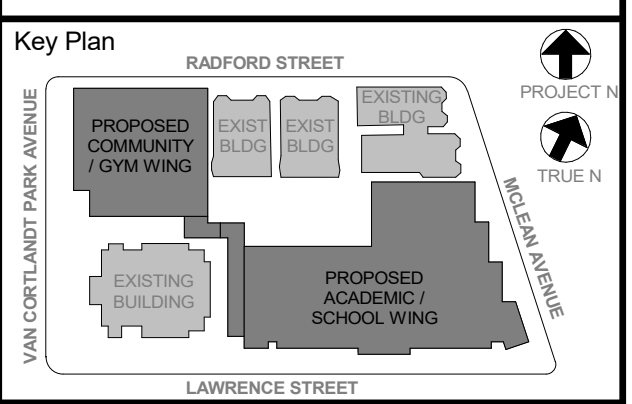
B2 COMMUNITY WING - BASEMENT ADD ALTERNATE PLAN
1/8" = 1'-0"



1 COMMUNITY WING - 1st FLOOR FINISH PLAN
1/8" = 1'-0"



B COMMUNITY WING - BASEMENT PLAN
1/8" = 1'-0"



NOTE: ALL LOCAL LEGAL REQUIREMENTS AND PLANS INDICATED OR REPRESENTED BY THIS DRAWING ARE OWNED BY AND ARE THE PROPERTY OF HOKER GARMENT & LINDSON ARCHITECTS, PC. HOKER AND HOKER CREATED FOR USE ON THIS PROJECT. NONE OF SUCH LEGAL DESIGNS, ARRANGEMENTS OR PLANS SHALL BE USED BY OR DECIDED TO ANY PURPOSE WHATSOEVER WITHOUT THE WRITTEN PERMISSION OF HOKER.

WRITTEN DIMENSIONS ON THIS DRAWING SHALL HAVE PRECEDENCE OVER UNLESS OTHERWISE NOTED. CONTRACTOR SHALL VERIFY ALL ACTUAL DIMENSIONS AND CONDITIONS ON THE JOB AND THE ARCHITECT MUST BE NOTIFIED OF ANY VARIATIONS FROM DIMENSIONS AND CONDITIONS SHOWN. SHOP DETAILS MUST BE SUBMITTED TO THIS OFFICE FOR APPROVAL BEFORE PROCEEDING WITH FABRICATION.

ALTERATIONS BY ANY PERSON, IN ANY WAY, OF ANY ITEM CONTAINED ON THIS DOCUMENT, UNLESS ACTING UNDER THE DIRECTION OF THE LICENSED ARCHITECT, ENGINEER, PROFESSIONAL DESIGNER OR ARCHITECT, SHALL BE A VIOLATION OF PROFESSIONAL ETHICS AND THE ARCHITECTURE, ENGINEERING AND PROFESSIONAL DESIGNERS' ACTS OF 2008, AS AMENDED BY CHAPTER 100 OF THE LAWS OF 2009, AND THE ARCHITECTURE, ENGINEERING AND PROFESSIONAL DESIGNERS' ACTS OF 2010, AS AMENDED BY CHAPTER 100 OF THE LAWS OF 2010.

Professional Seal

No.	Date	Issue
5	11/01/2021	ISSUE FOR BID

COMMUNITY WING BASEMENT & 1st FLOOR FINISH PLANS

Job No.	2019-1026	Date	11/01/2021
Scale	AS NOTED	Drawn / Checked	- / -

Sheet Number
A505