

NEW COMMUNITY SCHOOL 35 AT ST DENIS SITE

YONKERS JOINT SCHOOLS CONSTRUCTION BOARD
121 McLean Avenue
Yonkers, NY 10705

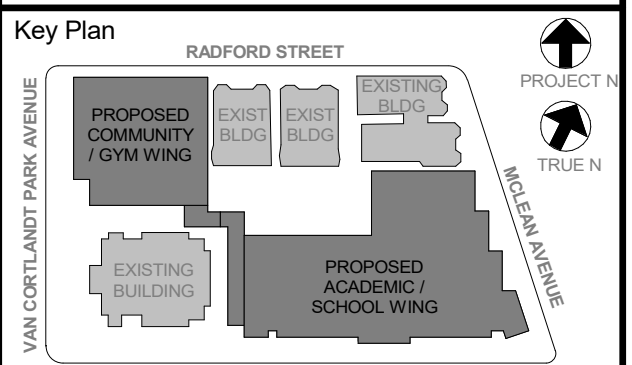


NY SED PROJECT CONTROL NO.
66-23-00-01-0-346-001

CONSTRUCTION DOCUMENTS

INTERIORS NOTES:

- NOTE ADD ALTERNATE, CASEWORK, MILLWORK, GYM EQUIPMENT ITEMS WITHIN THIS ADD ALTERNATE ARE NOT PART OF BASE BID. REVIEW FURTHER INFORMATION IN SPEC.
- MT DENOTES MONITOR, WALL-MOUNTED AV EQUIPMENT (DISPLAY MONITOR) BY OWNER. GC TO PROVIDE REQUIRED BLOCKING. COORDINATE FINAL LOCATION WITH OWNER'S AV VENDOR & ARCHITECT
- WB DENOTES WHITEBOARD
- TB DENOTES TACK BOARD, SEE SPEC SECTION 101100
- DB DENOTES DIVERSIBOARD PRODUCT, SEE SPEC SECTION 101100 FOR MORE INFO.
- DF DENOTES DRINKING FOUNTAIN
- ALL EXTERIOR CORNERS OF WALL TILE TO HAVE SCHLUTER EDGES.
- UNLESS OTHERWISE NOTED, ELECTRICAL OUTLETS & DATA OUTLETS ARE TO BE 18" (1'-6") ON CENTER A.F.F., TYPICAL. EXCEPTION: ALL OUTLETS AT COUNTERTOPS ARE TO BE 42" (3'-6") A.F.F. TO THE BOTTOM OF THE OUTLET PLATE, TYP. SEE ELECTRICAL FOR MORE INFORMATION.



NOTE: ALL IDEAS, DESIGN, ARRANGEMENTS AND/OR AREAS INDICATED OR REPRESENTED BY THIS DRAWING ARE OWNED BY AND ARE THE PROPERTY OF K&D ARCHITECTS, PC. K&D ARCHITECTS, PC HAS CREATED THIS DRAWING FOR THE PROJECT. NONE OF SUCH IDEAS, DESIGN, ARRANGEMENTS OR PLANS SHALL BE USED BY OR DISCLOSED TO ANY PURPOSE WHATSOEVER WITHOUT THE WRITTEN PERMISSION OF K&D.

WRITTEN DIMENSIONS ON THIS DRAWING SHALL HAVE PRECEDENCE OVER UNLabeled DIMENSIONS. CONTRACTOR SHALL VERIFY ALL ACTUAL DIMENSIONS AND CONDITIONS ON THE JOB AND THE ARCHITECT MUST BE NOTIFIED OF ANY VARIATIONS FROM DIMENSIONS AND CONDITIONS SHOWN. ANY DETAILS MUST BE SUBMITTED TO THIS OFFICE FOR APPROVAL BEFORE PROCEEDING WITH FABRICATION.

ALTERATIONS BY ANY PERSON, IN ANY WAY, OF ANY ITEM CONTAINED ON THIS DOCUMENT, UNLESS ACTING UNDER THE DIRECTION OF THE LICENSED ARCHITECT, IS STRICTLY PROHIBITED. SEE 2019 EDITIONS OF A REGULATION OR COPYRIGHT NOTICE, K&D ARCHITECTS, PC.

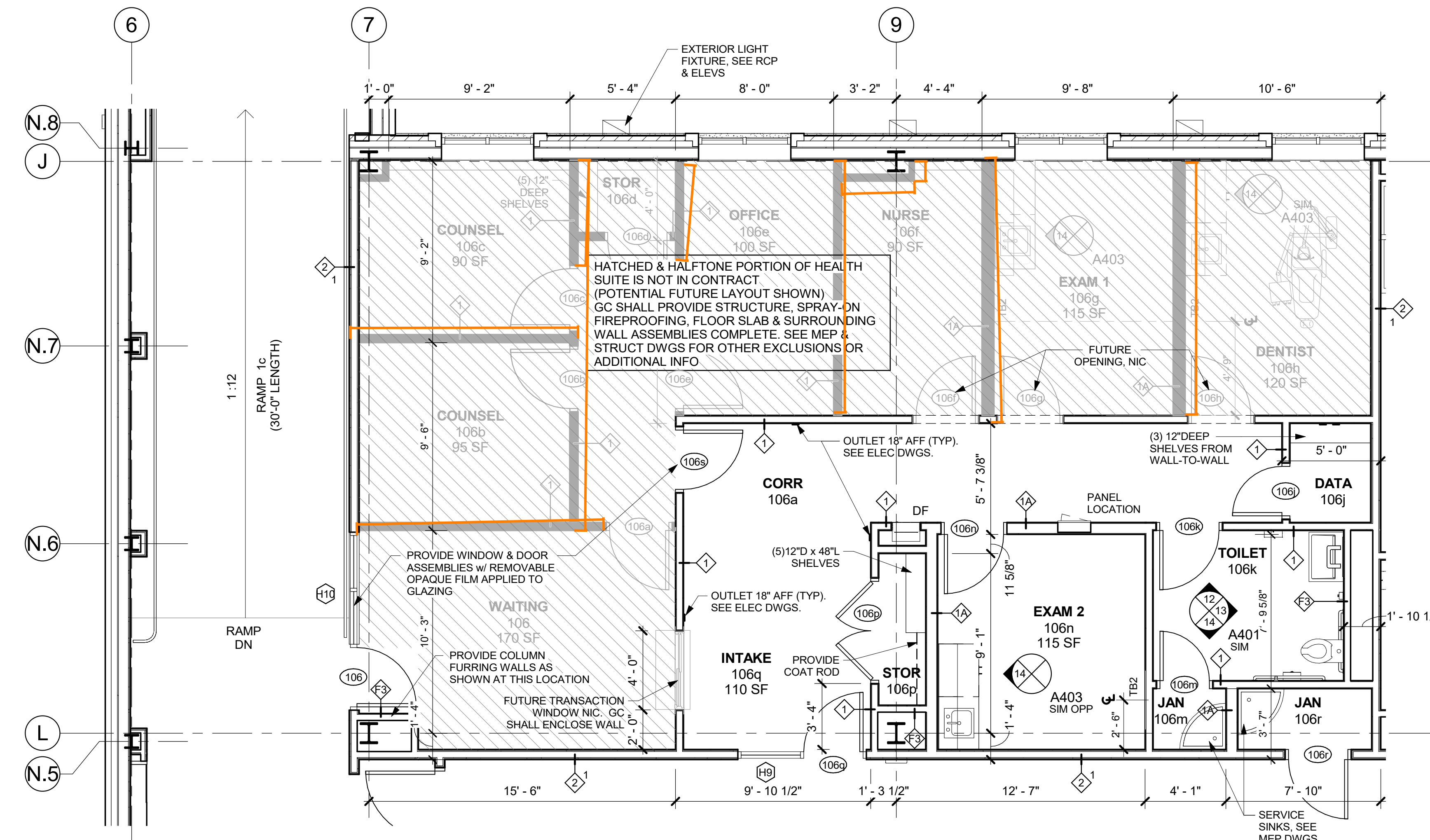
Professional Seal

No.	Date	Issue
5	11/01/2021	ISSUE FOR BID
3	07/14/2021	CONSTRUCTION DOCS - NYSED
2	12/15/2020	DESIGN DEVELOPMENT

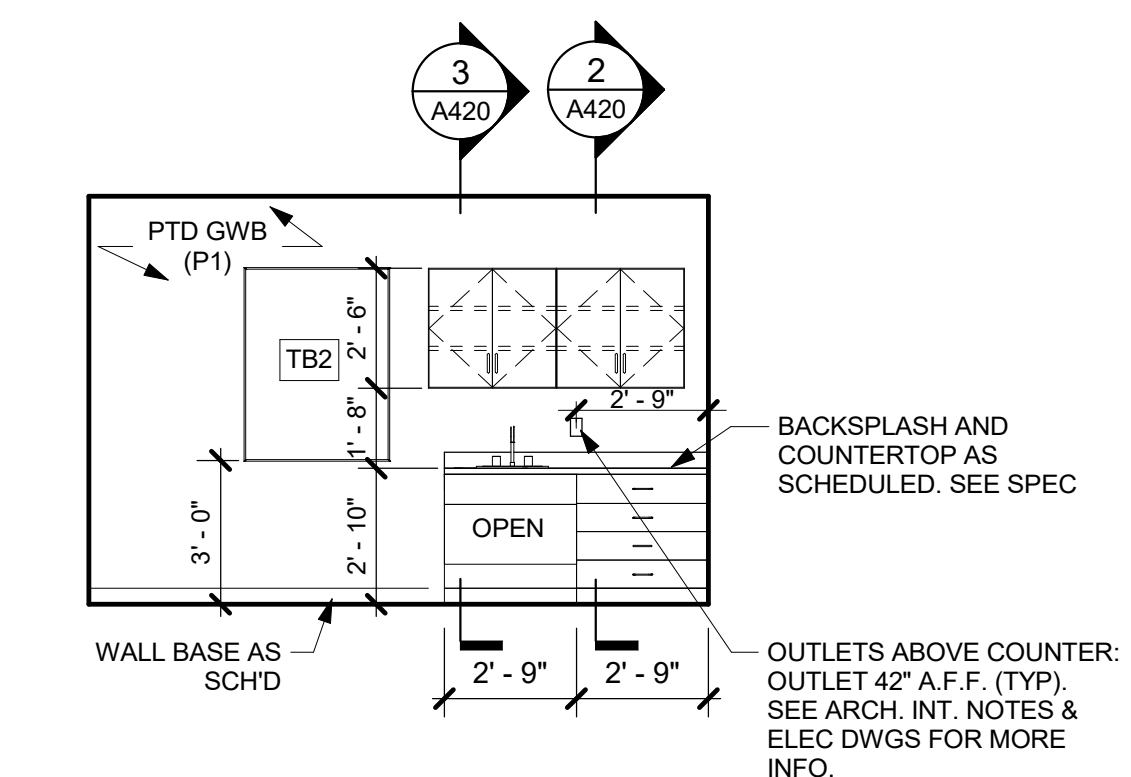
OFFICE & HEALTH SUITE ELEVATIONS

Job No. 2019-1026 Date 12/15/2020
Scale AS NOTED Drawn / Checked -
Sheet Number

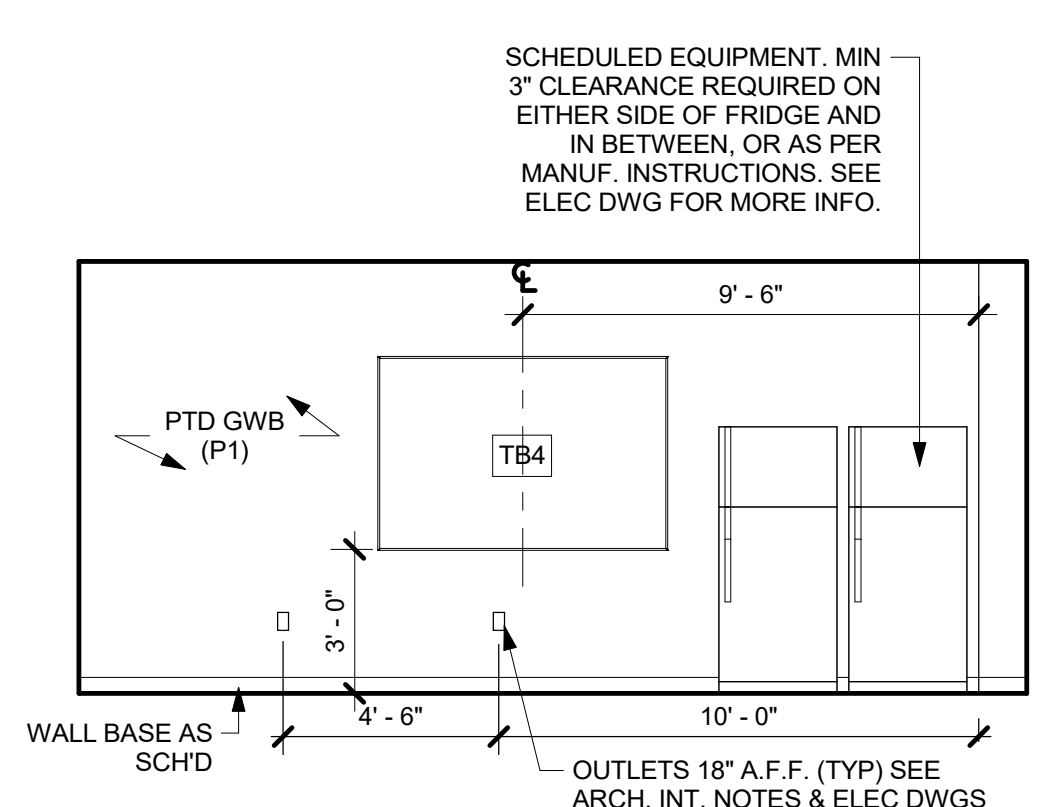
A403



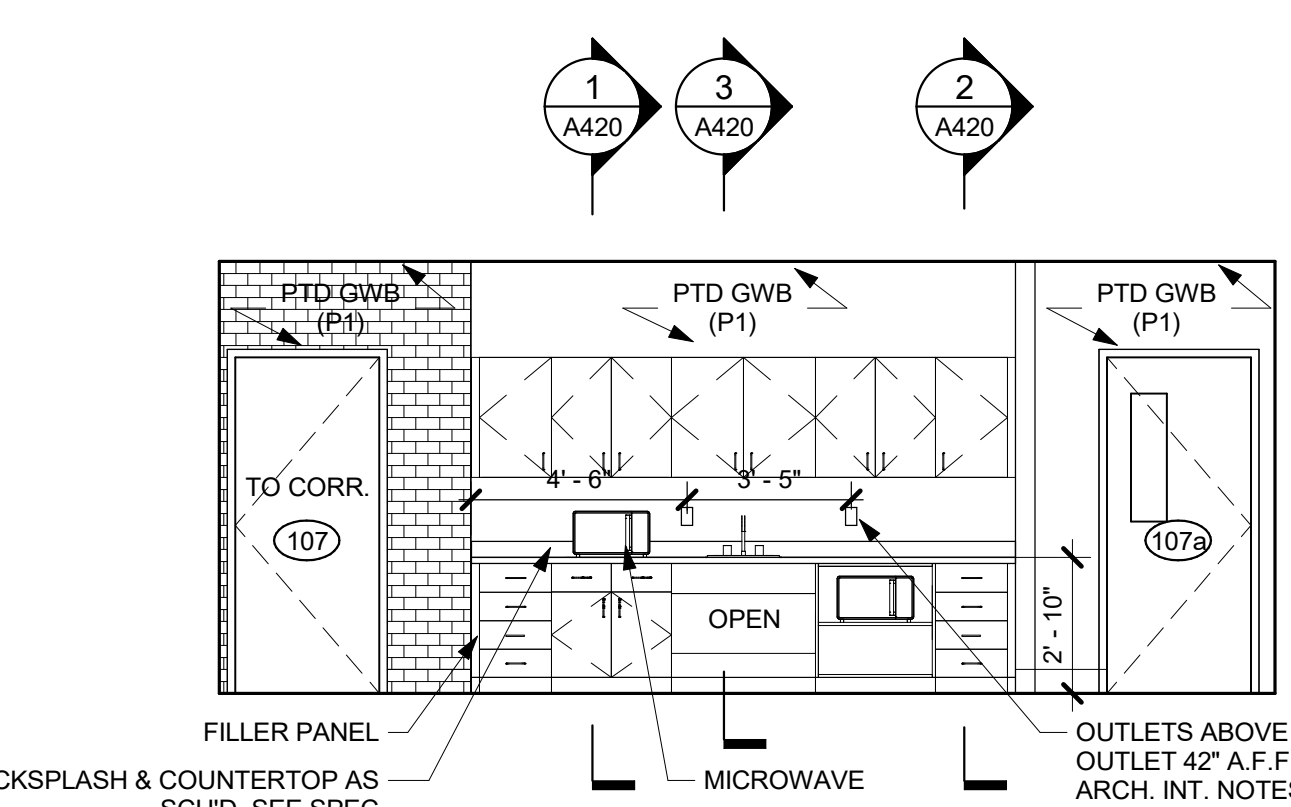
13 ENLARGED HEALTH SUITE PLAN
1/4" = 1'-0"



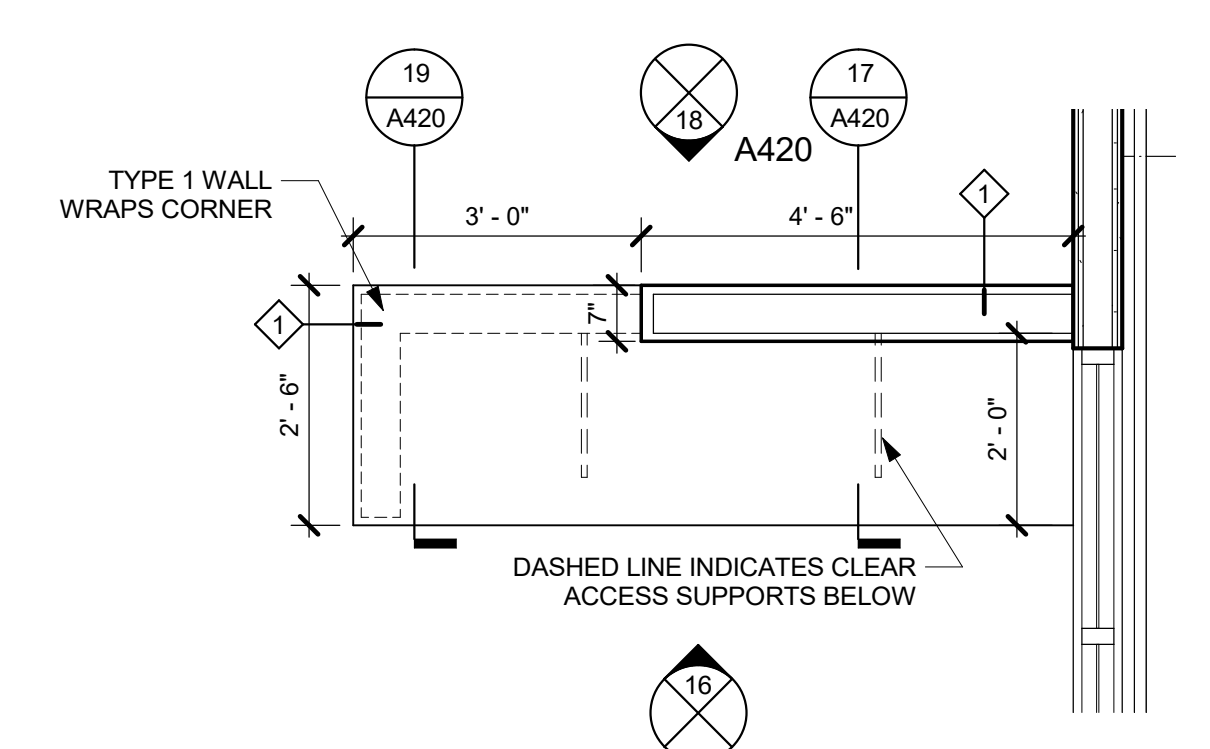
14 EXAM RM - WEST ELEV
1/4" = 1'-0"



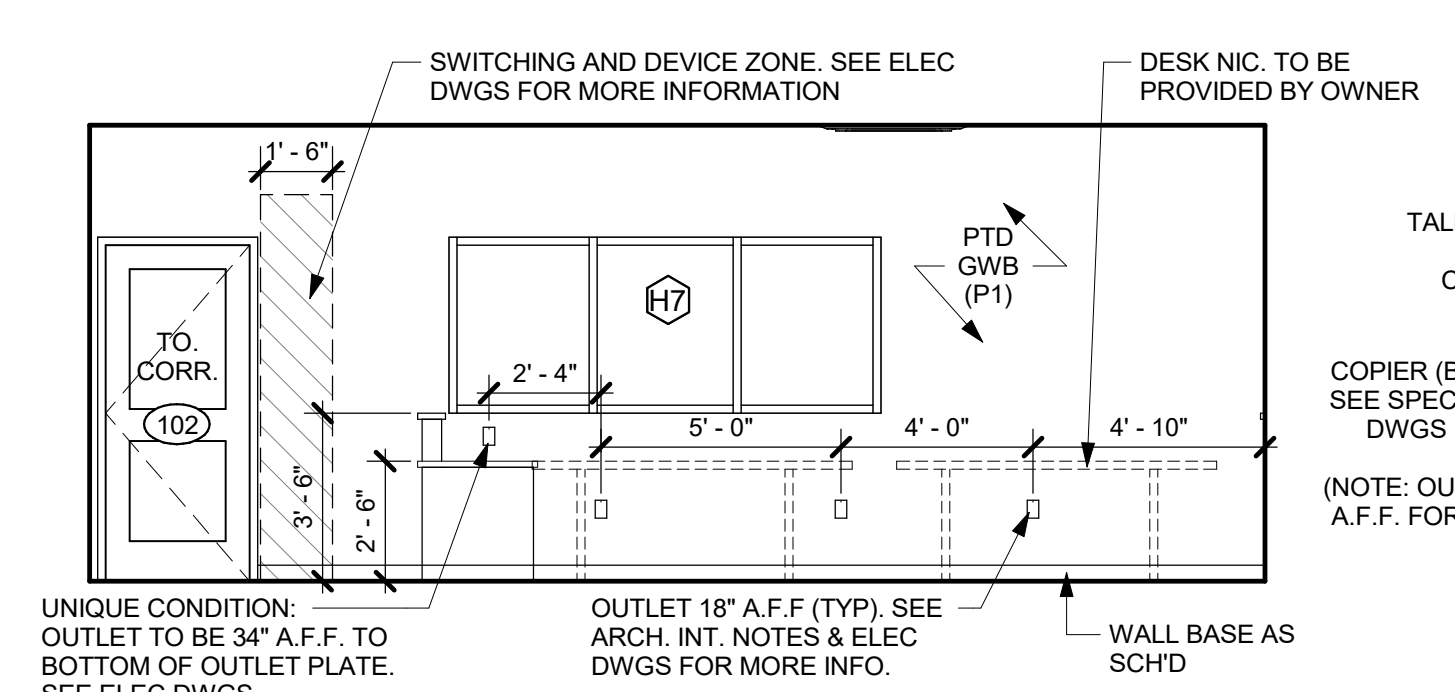
12 FACULTY 107 - WEST ELEV
1/4" = 1'-0"



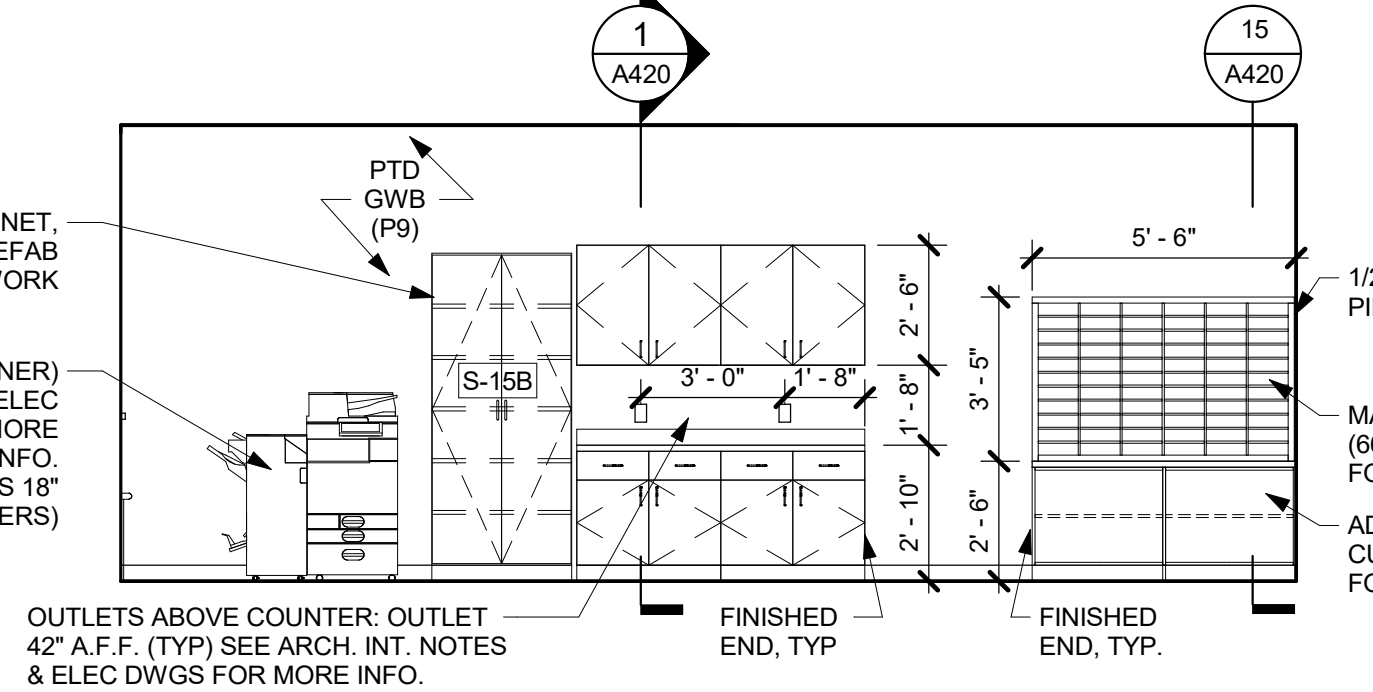
11 FACULTY 107 - SOUTH ELEV
1/4" = 1'-0"



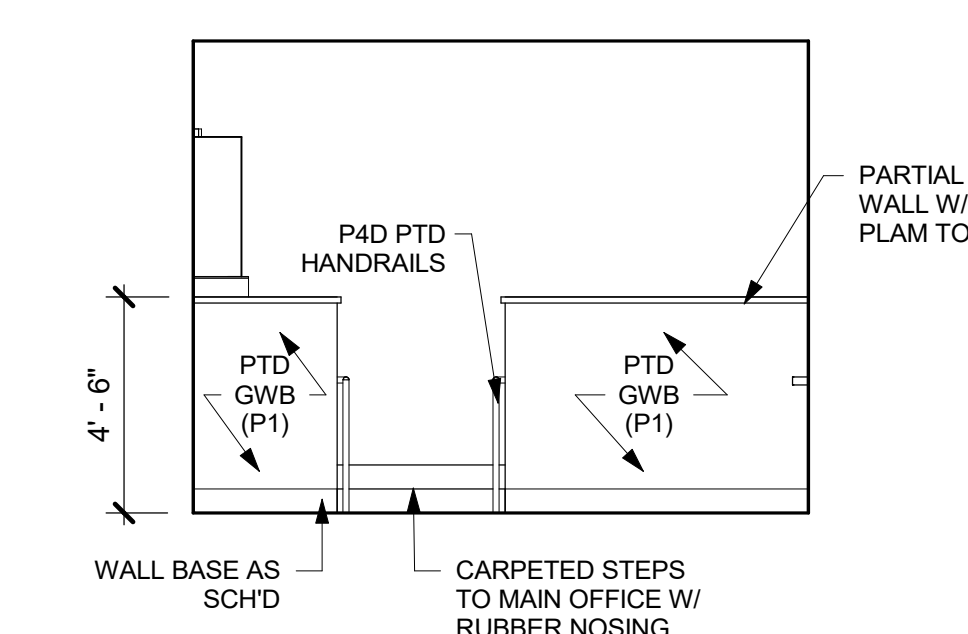
10 MAIN OFFICE DESK ENLARGED PLAN
1/2" = 1'-0"



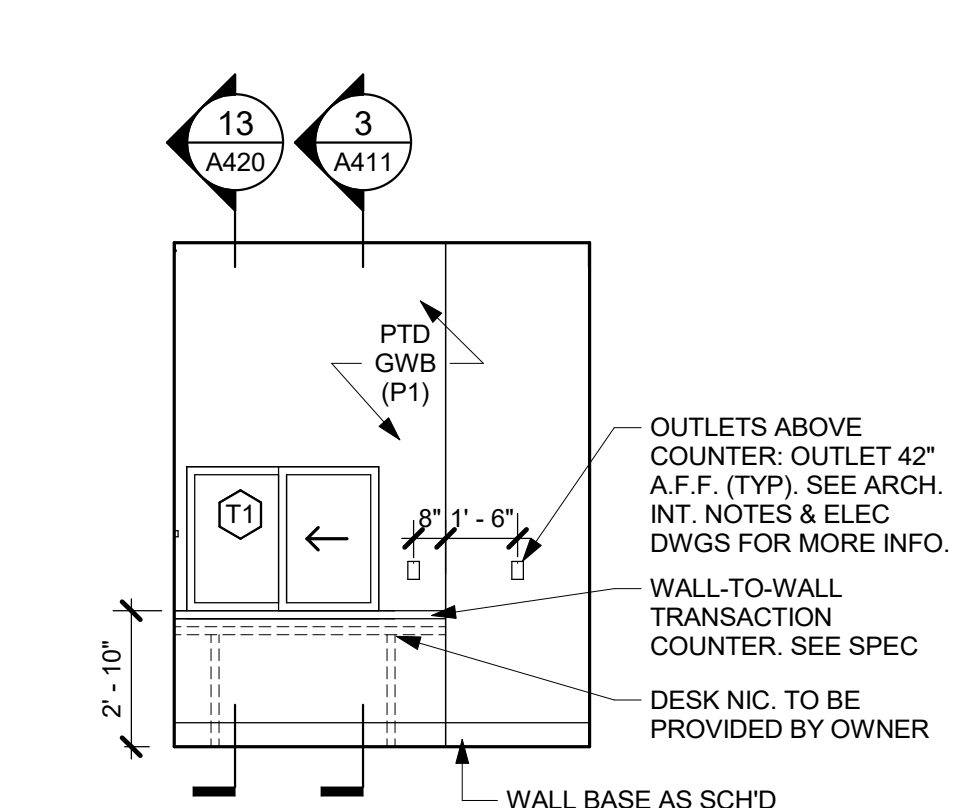
9 MAIN OFF. - EAST ELEV
1/4" = 1'-0"



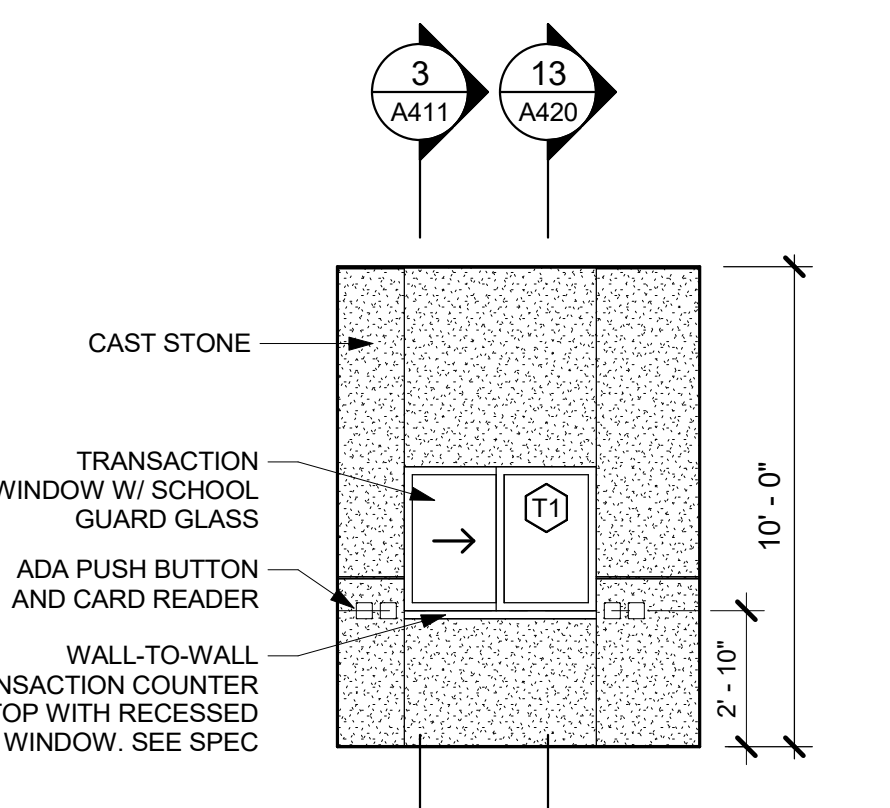
8 MAIN OFF. - WEST ELEV
1/4" = 1'-0"



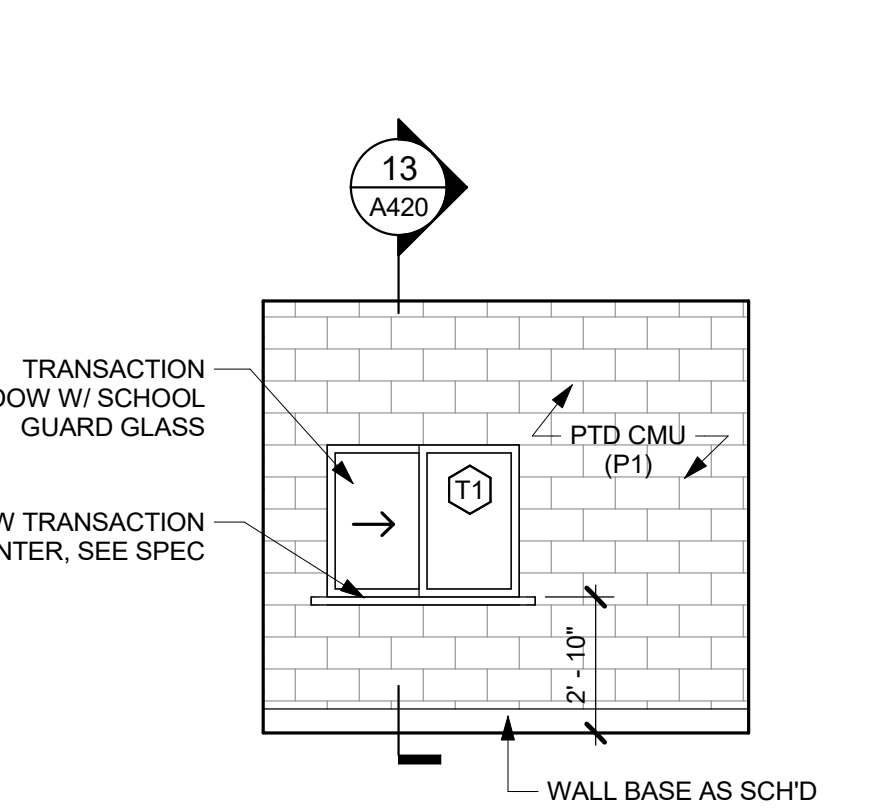
7 SEC 102a - NORTH ELEV
1/4" = 1'-0"



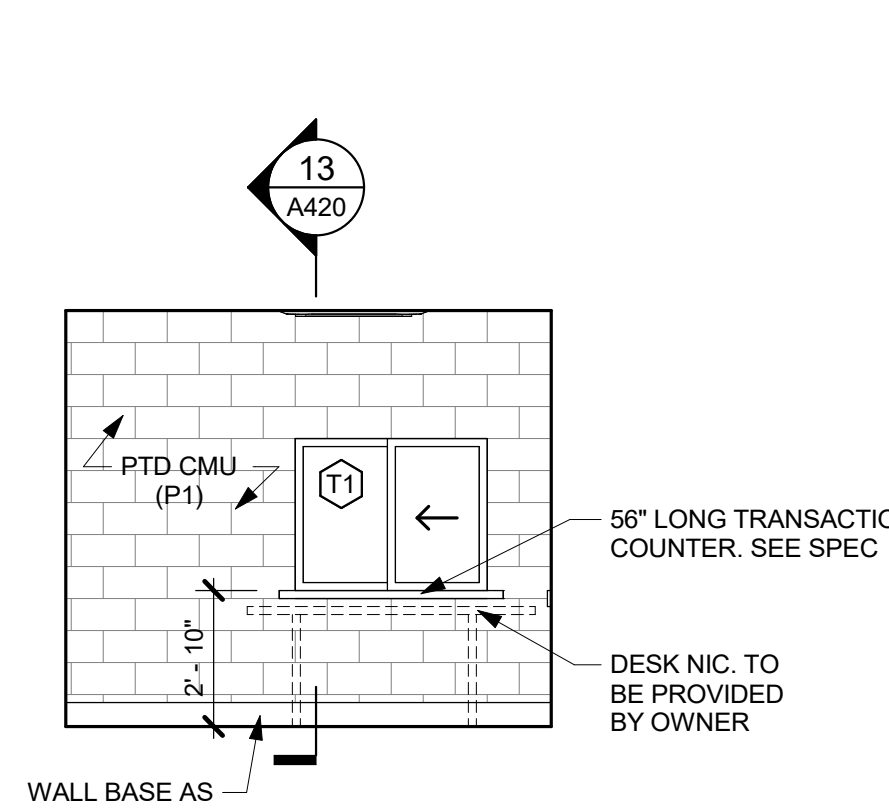
6 SEC 102a - EAST ELEV
1/4" = 1'-0"



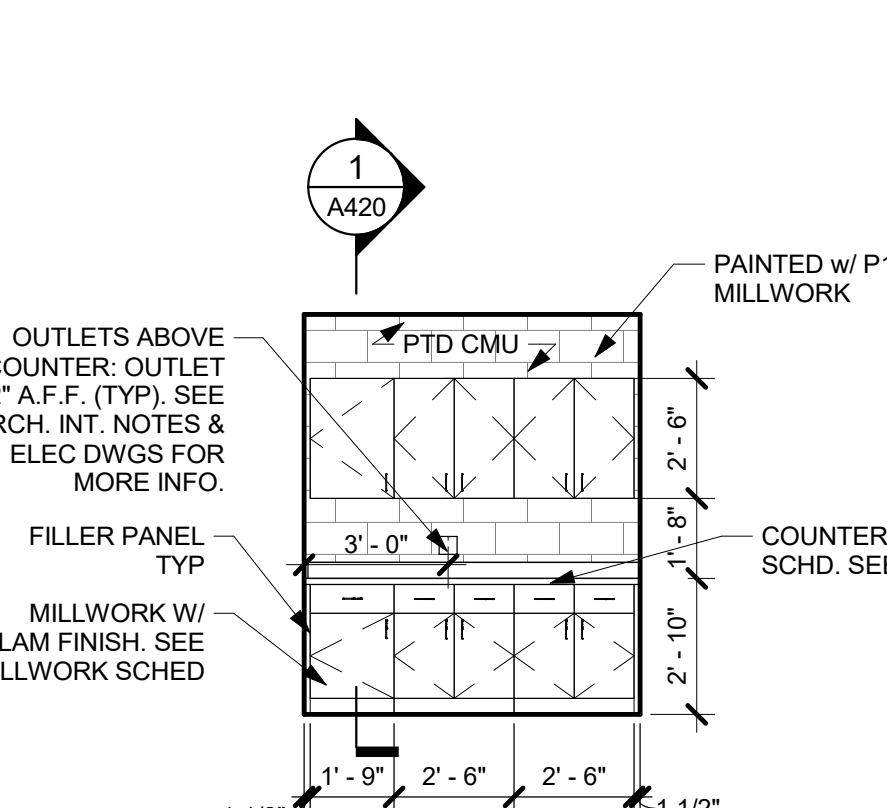
5 VEST 100 - WEST ELEV
1/4" = 1'-0"



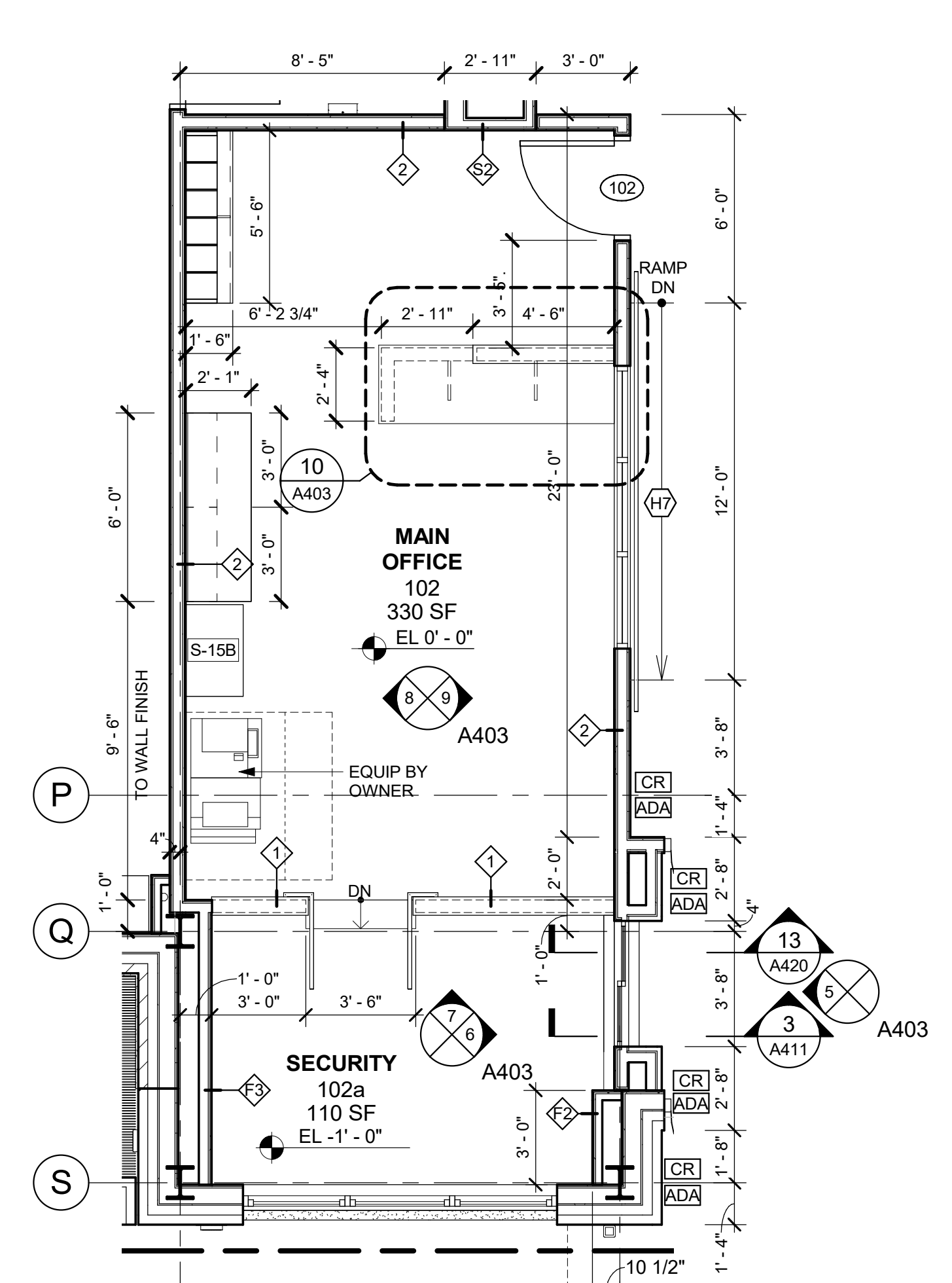
4 VEST G102 - NORTH ELEV
1/4" = 1'-0"



3 SEC G101 - SOUTH ELEV
1/4" = 1'-0"



2 COPY ROOM - WEST ELEV
1/4" = 1'-0"



1 MAIN OFFICE
1/4" = 1'-0"