

NEW COMMUNITY SCHOOL 35 AT ST DENIS SITE

YONKERS JOINT SCHOOLS
CONSTRUCTION BOARD
121 McLean Avenue
Yonkers, NY 10705

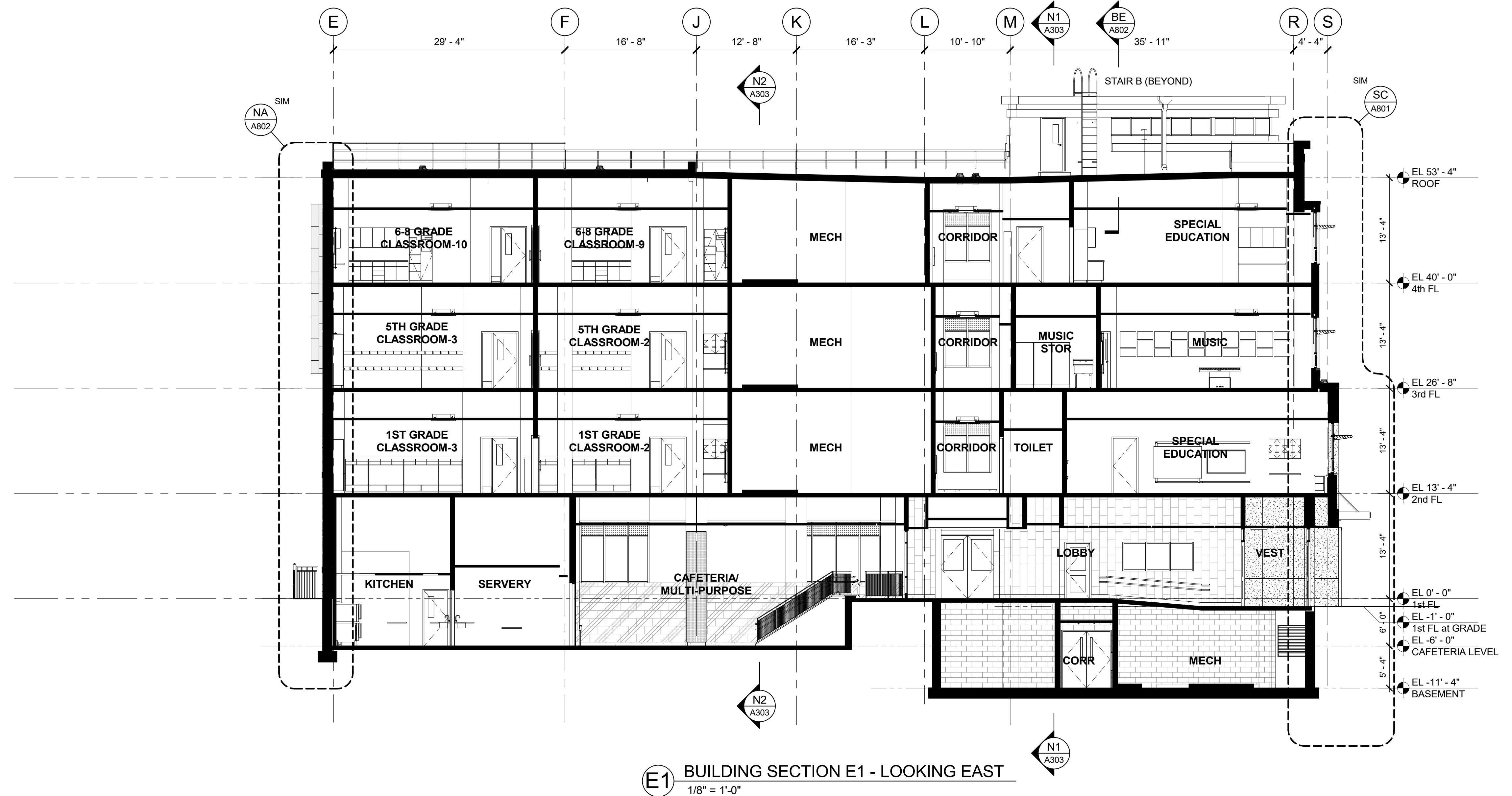
KG+D listen imagine build
ARCHITECTS, PC
285 MAIN STREET - MOUNT KISCO, NEW YORK 10549
P:914.666.5900 KGDARCHITECTS.COM

NY SED PROJECT CONTROL NO.
66-23-00-01-0-346-001

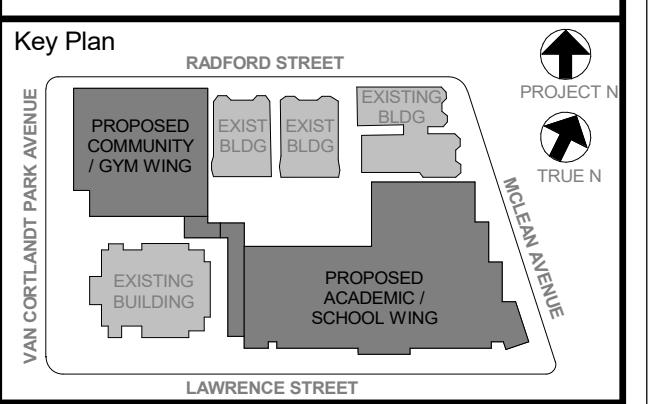
CONSTRUCTION DOCUMENTS

GENERAL NOTES

1 BUILDING SECTIONS ARE INTENDED FOR REFERENCE INFORMATION. REFER TO WALL SECTIONS & DETAILS FOR SPECIFIC CONSTRUCTION CONFIGURATIONS.



E1 BUILDING SECTION E1 - LOOKING EAST
1/8" = 1'-0"



NOTE: ALL SCALE, SECTION, VIEWPOINTS AND PLANS INDICATED OR REPRESENTED BY THIS DRAWING ARE OWNED BY AND ARE THE PROPERTY OF KIERKE GARDNER & ASSOCIATES, ARCHITECTS, PC (KGA) AND HEREIN CREDITED FOR USE ON THIS PROJECT. NONE OF SUCH IDEAS, DESIGNS, ARRANGEMENTS OR PLANS SHALL BE USED BY OR DISCLOSED TO ANY PARTY WHATSOEVER WITHOUT THE WRITTEN PERMISSION OF KGA.

WRITTEN DIMENSIONS ON THIS DRAWING SHALL HAVE PRECEDENCE OVER UNLabeled DIMENSIONS. CONTRACTOR SHALL VERIFY ALL ACTUAL DIMENSIONS AND CONDITIONS ON THE JOB AND THE ARCHITECT MUST BE NOTIFIED OF ANY VARIATIONS FROM DIMENSIONS AND CONDITIONS SHOWN. SHOP DETAILS MUST BE SUBMITTED TO THIS OFFICE FOR APPROVAL BEFORE PROCEEDING WITH FABRICATION.

ALTERATIONS BY ANY PERSON, IN ANY WAY, OF ANY ITEM CONTAINED ON THIS DOCUMENT, UNLESS ACTING UNDER THE DIRECTION OF THE LICENSED ARCHITECT, ENGINEER, PROFESSIONAL DESIGNER OR ARCHITECT, IS A VIOLATION OF COPYRIGHT AND THE GARDNER & ASSOCIATES, ARCHITECTS, PC AND KGA'S RIGHTS.

Professional Seal

No.	Date	Issue
5	11/01/2021	ISSUE FOR BID
3	07/14/2021	CONSTRUCTION DOCS - NYSED
2	12/15/2020	DESIGN DEVELOPMENT
1	08/31/2020	SCHEMATIC DESIGN

Sheet Title

CLASSROOM BUILDING SECTIONS

Job No. 2019-1026 Date 08/31/2020
Scale AS NOTED Drawn / Checked --

Sheet Number
A304