

NEW COMMUNITY SCHOOL 35 AT ST DENIS SITE

YONKERS JOINT SCHOOLS
CONSTRUCTION BOARD
121 McLean Avenue
Yonkers, NY 10705

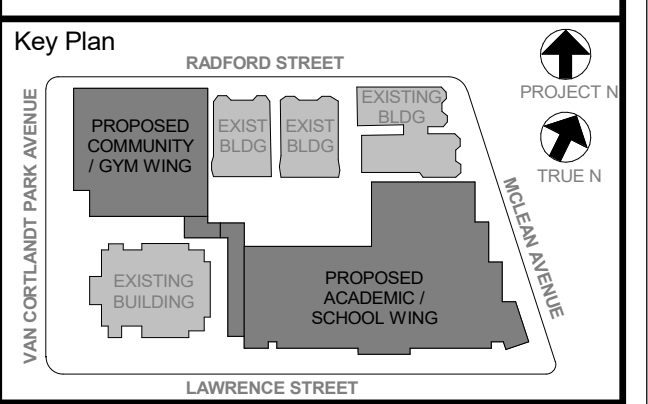


NY SED PROJECT CONTROL NO.
66-23-00-01-0-346-001

CONSTRUCTION DOCUMENTS

GENERAL NOTES

1 BUILDING SECTIONS ARE INTENDED FOR REFERENCE INFORMATION. REFER TO WALL SECTIONS & DETAILS FOR SPECIFIC CONSTRUCTION CONFIGURATIONS.



NOTE: ALL LOCAL, NATIONAL, STATE AND FEDERAL REGULATIONS AND ORDINANCES ARE INCORPORATED AND REPRESENTED BY THIS DRAWING AND ARE THE PROPERTY OF YONKERS JOINT SCHOOLS ARCHITECTS, PC. THESE ARE HEREBY CREATED FOR USE ON THIS PROJECT. NONE OF SUCH LOCAL, STATE, FEDERAL OR FEDERAL REGULATIONS AND ORDINANCES SHALL BE USED BY OR DISOBEYED TO ANY PURPOSE WHATSOEVER WITHOUT THE WRITTEN PERMISSION OF YONKERS JOINT SCHOOLS ARCHITECTS, PC.

WRITTEN DIMENSIONS ON THIS DRAWING SHALL TAKE PRECEDENCE OVER UNLabeled DIMENSIONS. CONTRACTOR SHALL VERIFY ALL ACTUAL DIMENSIONS AND CONDITIONS ON THE JOB AND THE ARCHITECT MUST BE NOTIFIED OF ANY DEVIATIONS FROM DIMENSIONS AND CONDITIONS SHOWN. SHOP DETAILS MUST BE SUBMITTED TO THIS OFFICE FOR APPROVAL BEFORE PROCEEDING WITH FABRICATION.

ALTERATIONS BY ANY PERSON, IN ANY WAY, OF ANY ITEM CONTAINED ON THIS DOCUMENT, UNLESS ACTING UNDER THE DIRECTION OF THE LICENSED ARCHITECT, ENGINEER, PROFESSIONAL DESIGNER OR ARCHITECT, IS A VIOLATION OF PROFESSIONAL ETHICS AND IS SUBJECT TO PENALTY UNDER NEW YORK STATE LAW.

NO. 1 DATE ISSUE

5 11/01/2021 ISSUE FOR BID
3 07/14/2021 CONSTRUCTION DOCS - NYSED
2 12/15/2020 DESIGN DEVELOPMENT
1 08/31/2020 SCHEMATIC DESIGN

Sheet Title

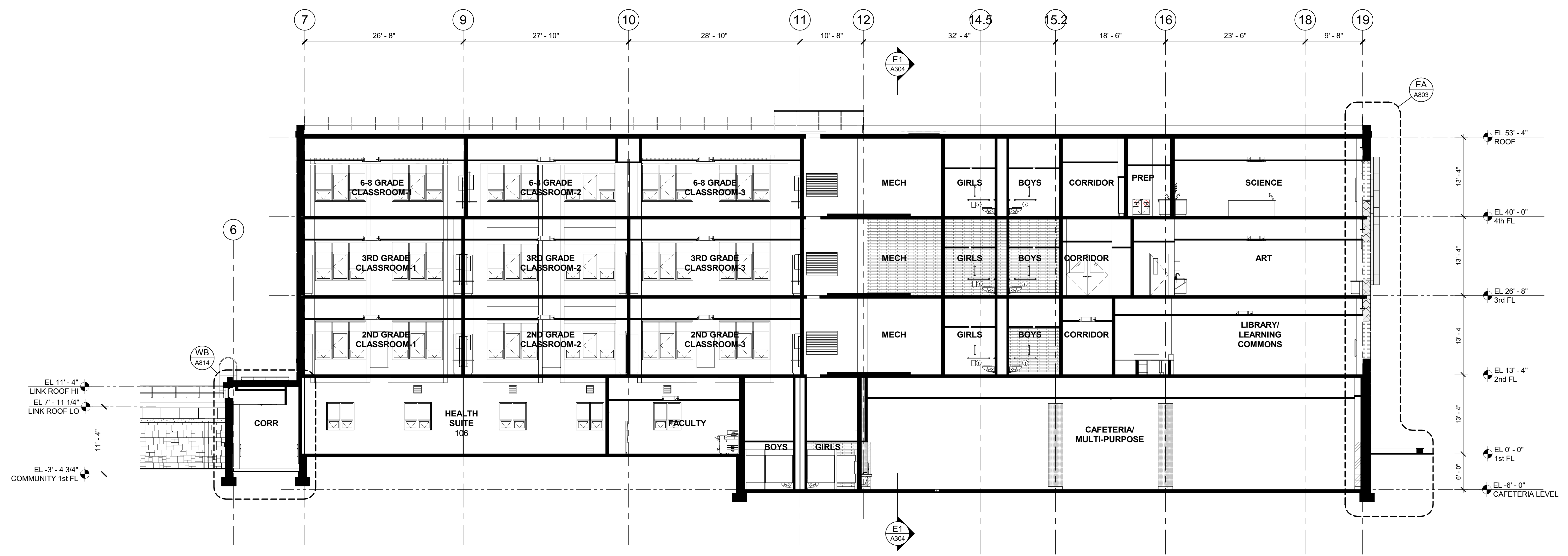
CLASSROOM BUILDING SECTIONS

Job No. 2019-1026 Date 08/31/2020
Scale AS NOTED Drawn / Checked - - -
Sheet Number

A303



N1 BUILDING SECTION N1 - LOOKING NORTH1
1/8" = 1'-0"



N2 BUILDING SECTION N2 - LOOKING NORTH
1/8" = 1'-0"