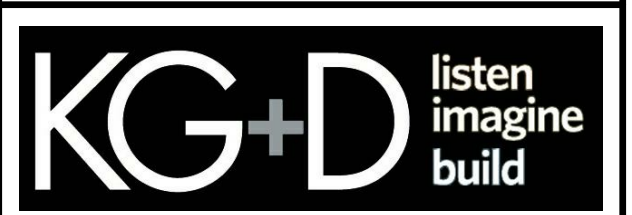


NEW COMMUNITY SCHOOL 35 AT ST DENIS SITE

YONKERS JOINT SCHOOLS CONSTRUCTION BOARD

121 McLean Avenue
Yonkers, NY 10705



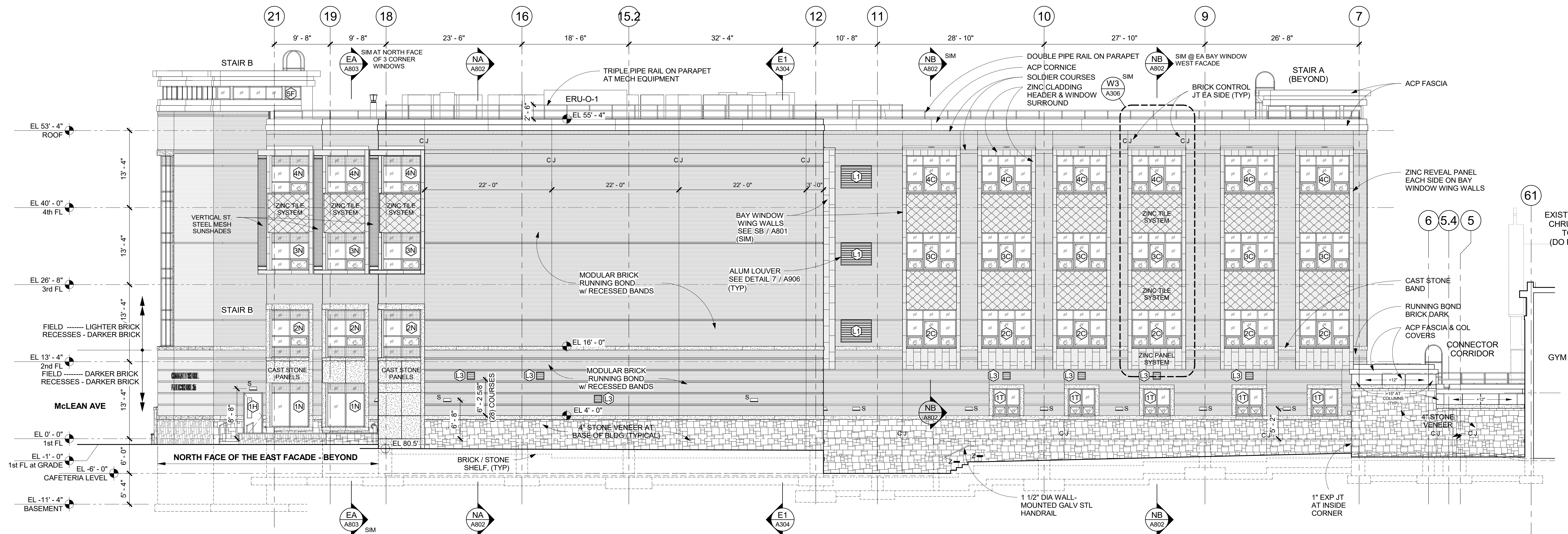
KG+D ARCHITECTS, PC
285 MAIN STREET - MOUNT KISCO, NEW YORK 10549
P:914.666.9900 KGDARCHITECTS.COM

NY SED PROJECT CONTROL NO.
66-23-00-01-0-346-001

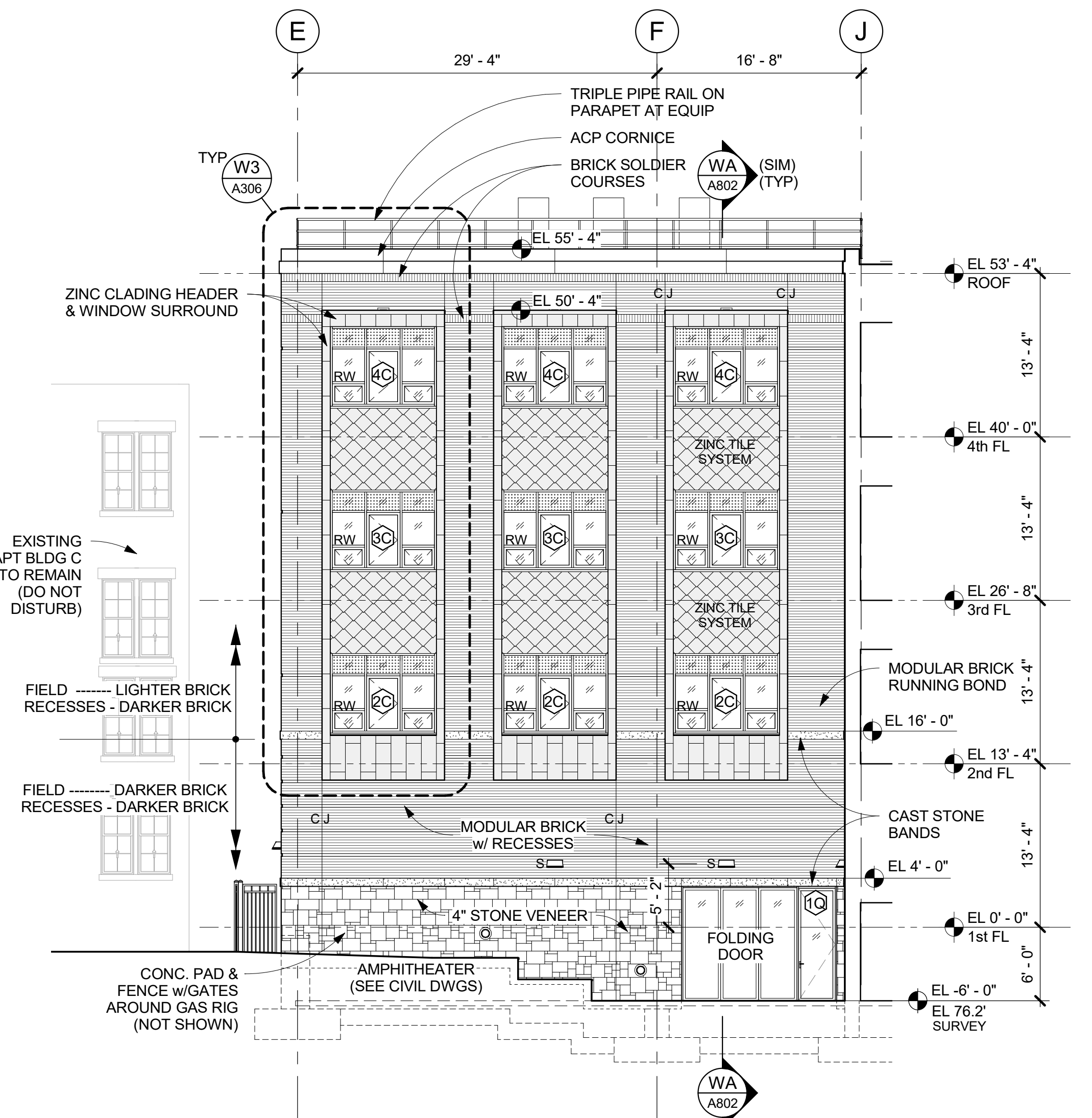
CONSTRUCTION DOCUMENTS

GENERAL NOTES

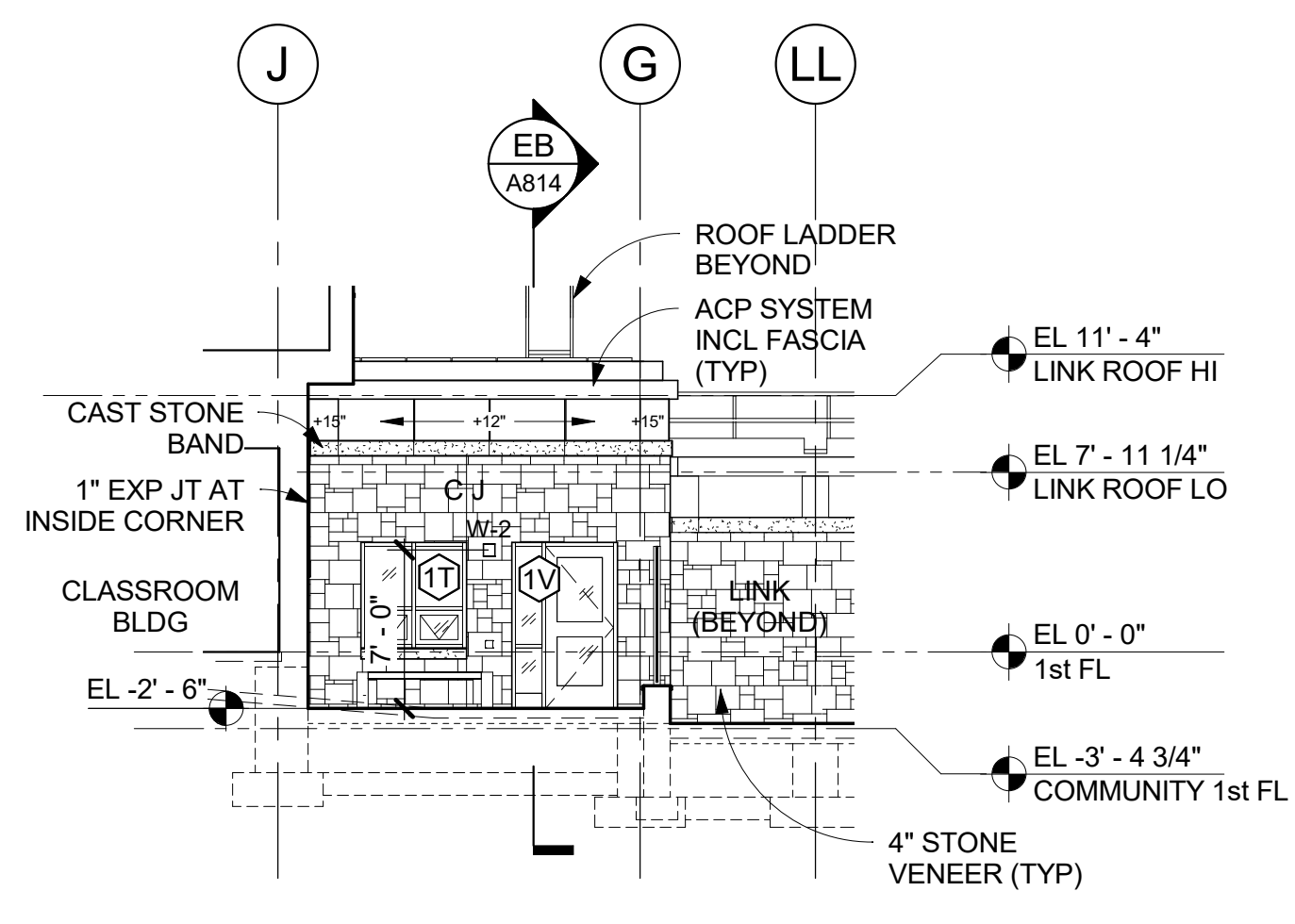
- 1 (1A) DENOTES WINDOW TYPE, SEE DWG A904 & A905
- 2 (101) DENOTES DOOR NUMBER, SEE DOOR SCHEDULE ON A902
- 3 C/J CONTROL JOINT
- 4 RW DENOTES RESCUE WINDOW SEE A904 & SPECS FOR MORE INFO
- 5 ALL EXTERIOR LOUVERS SHALL BE 4" DEEP, ALUM. HORIZ. BLADE, STORMPROOF, DRAINABLE w/50% FREE AREA (MIN) FINISHED IN PREM. (KYNARI) METALLIC COLOR AS SELECTED BY ARCHITECT w/BIRD SCREEN, (SIM OR EQUAL TO RUSKIN ELF37524)
- 6 G.C. SHALL PROVIDE LOUVERS & COORDINATE FREE AREA REQUIREMENTS w/MECHANICAL CONTRACTOR
- 7 GLAZING IN DOORS, SIDELIGHTS & WITHIN 18" OF GRADE, FLOORS, & STAIR LANDINGS SHALL BE TEMPERED GLASS - SEE SPECS FOR MORE INFO



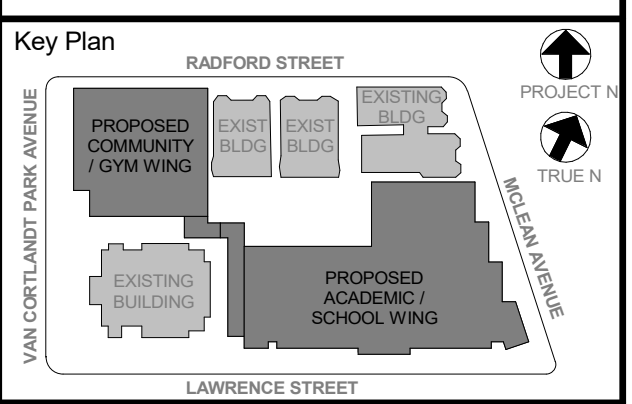
N NORTH FACADE ELEVATION
1/8" = 1'-0"



W2 WEST ELEVATION - 2
1/8" = 1'-0"



E2 EAST ELEVATION - COURTYARD
1/8" = 1'-0"



NOTE: ALL LOCAL DESIGN REQUIREMENTS ARE APPLIED AND INDICATED OR REPRESENTED BY THIS DRAWING. THESE ARE THE PROPERTY OF KGD ARCHITECTS, PC AND ARE NOT TO BE REPRODUCED OR USED FOR ANY OTHER PROJECT WITHOUT THE WRITTEN PERMISSION OF KGD ARCHITECTS, PC. ANY CHANGES TO THIS DRAWING SHALL BE NOTIFIED OF ANY CHANGES FROM DIMENSIONS AND CONDITIONS SHOWN. ANY DETAILS MUST BE SUBMITTED TO THIS OFFICE FOR APPROVAL, BEFORE PROCEEDING WITH FABRICATION.

ALL DIMENSIONS ON THIS DRAWING SHALL HAVE PRECEDENCE OVER SCALED DIMENSIONS. CONTRACTOR SHALL VERIFY ALL ACTUAL DIMENSIONS AND CONDITIONS ON THE JOB AND THE ARCHITECT MUST BE NOTIFIED OF ANY VARIATIONS FROM DIMENSIONS AND CONDITIONS SHOWN. ANY DETAILS MUST BE SUBMITTED TO THIS OFFICE FOR APPROVAL, BEFORE PROCEEDING WITH FABRICATION.

ALL REVISIONS BY ANY PERSON, IN ANY WAY, OF ANY ITEM CONTAINED ON THIS DOCUMENT, UNLESS ACTING UNDER THE DIRECTION OF THE LICENSED ARCHITECT, ENGINEER, PROFESSIONAL DESIGNER, OR ARCHITECT, SHALL BE THE PROPERTY OF KGD ARCHITECTS, PC AND SHALL BE SUBJECT TO THE ARCHITECT'S WRITTEN PERMISSION.

Professional Seal

| | | |
|-----|------------|---------------------------|
| 5 | 11/01/2021 | ISSUE FOR BID |
| 3 | 07/14/2021 | CONSTRUCTION DOCS - NYSED |
| 2 | 12/15/2020 | DESIGN DEVELOPMENT |
| 1 | 08/31/2020 | SCHEMATIC DESIGN |
| No. | Date | Issue |

CLASSROOM BUILDING ELEVATIONS

Job No. 2019-1026 Date 08/31/2020
Scale AS NOTED Drawn / Checked

Sheet Number
A302