

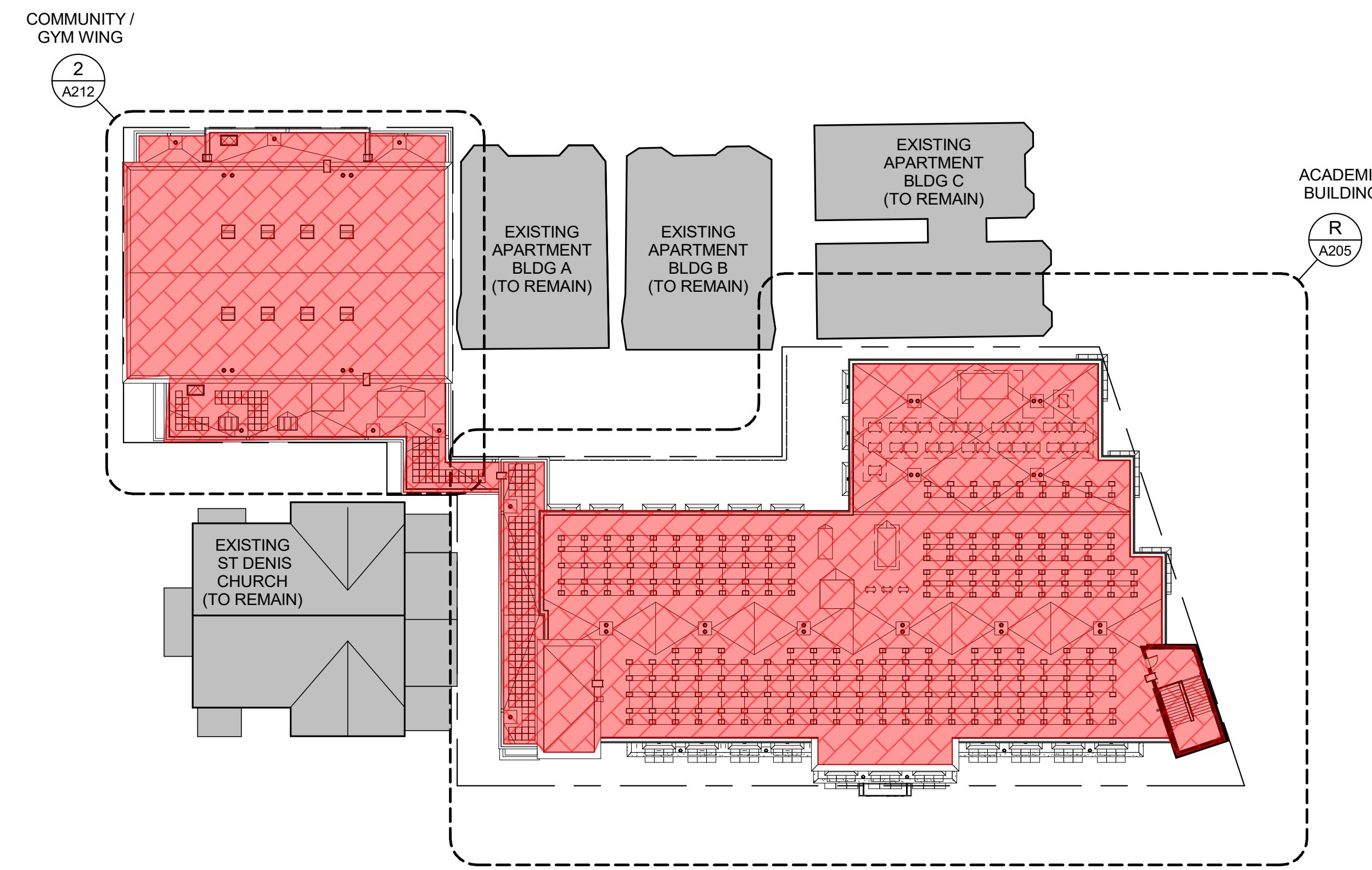
**NEW COMMUNITY SCHOOL 35 AT ST DENIS SITE**

YONKERS JOINT SCHOOLS CONSTRUCTION BOARD  
121 McLean Avenue  
Yonkers, NY 10705

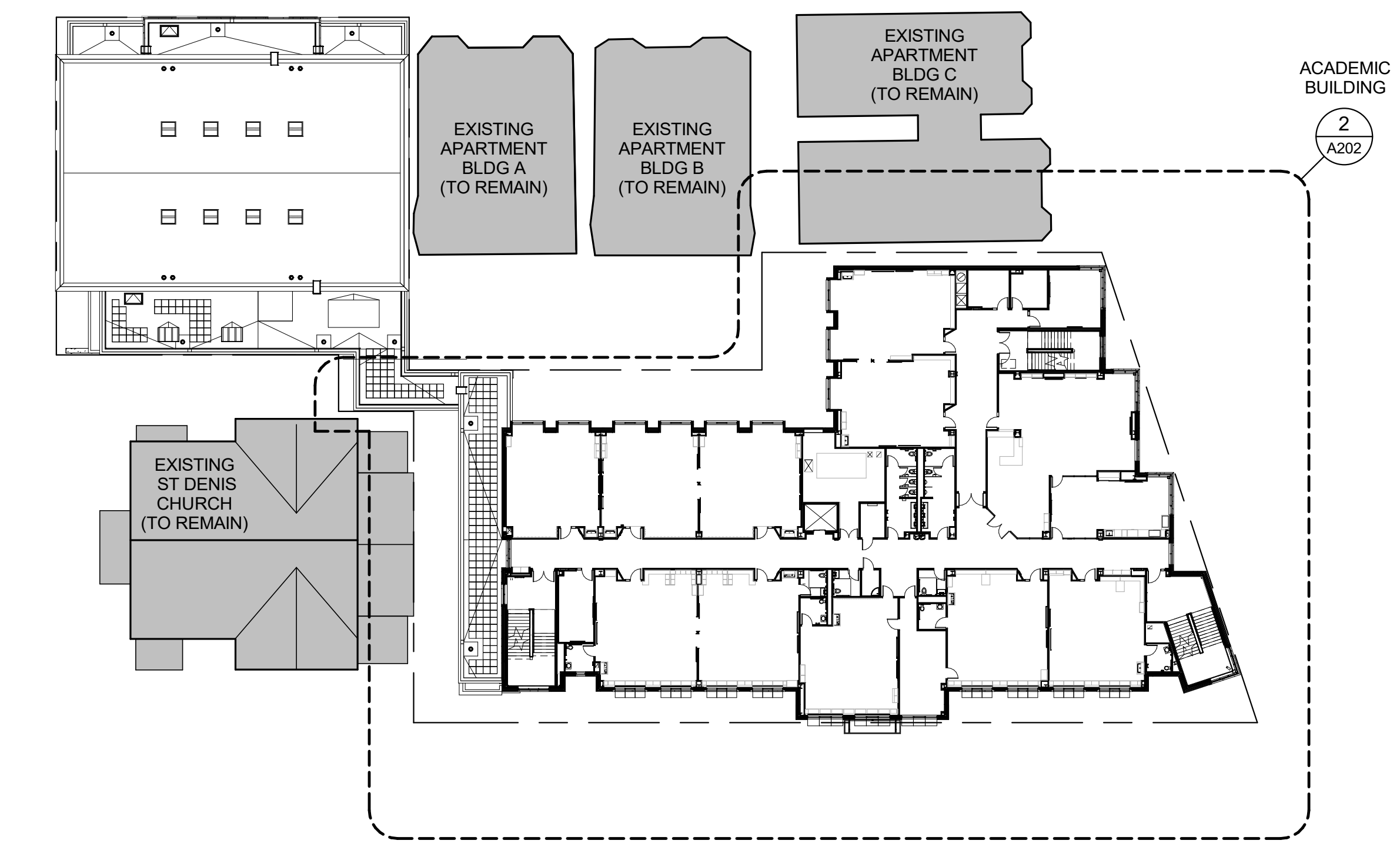
**KG+D** listen imagine build  
KG+D ARCHITECTS, PC  
285 MAIN STREET • MOUNT KISCO, NEW YORK 10549  
P:914.666.5900  
KGDARCHITECTS.COM

NY SED PROJECT CONTROL NO.  
66-23-00-01-0-346-001

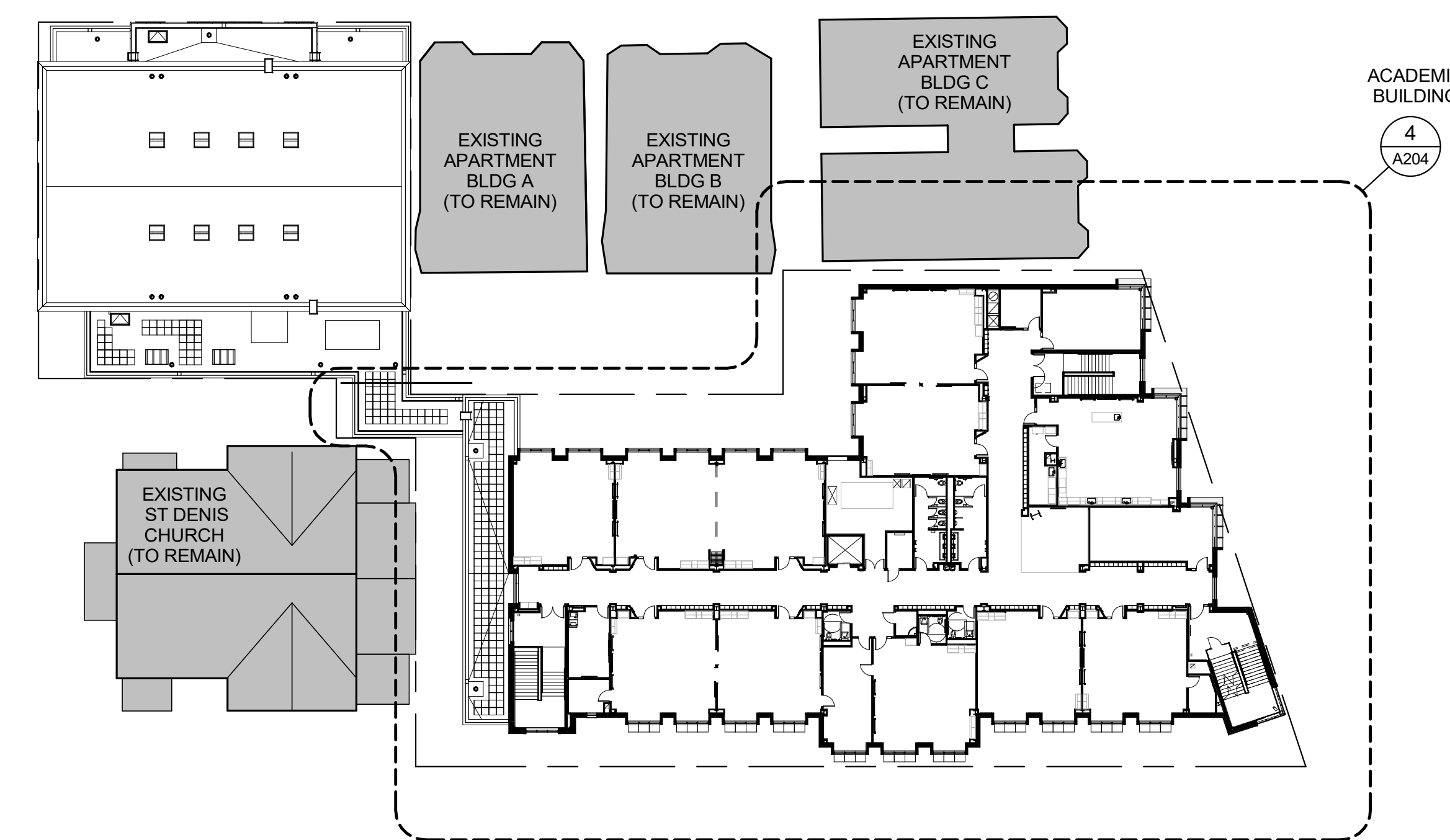
CONSTRUCTION DOCUMENTS



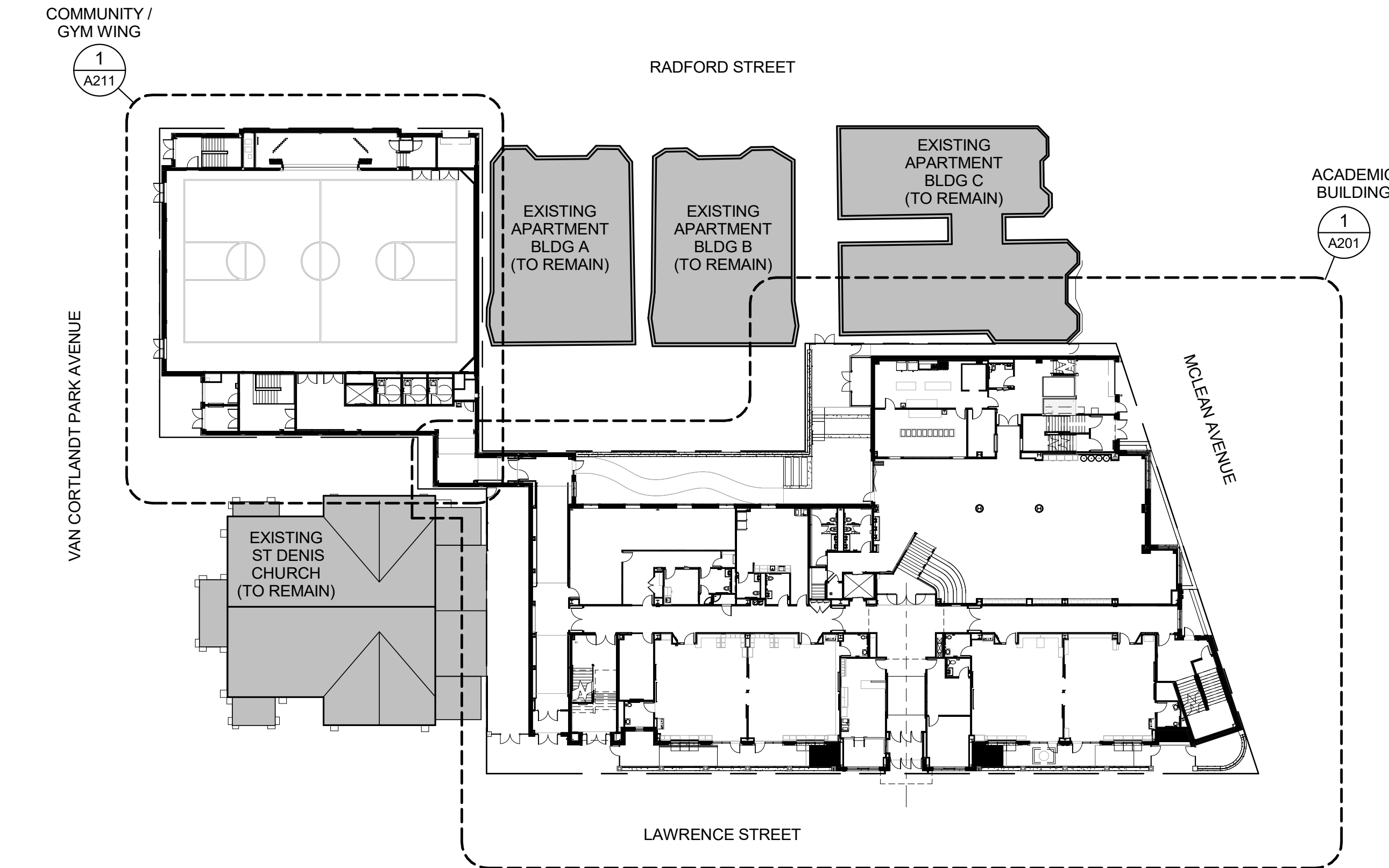
**5 OVERALL ROOF**  
1/32" = 1'-0"



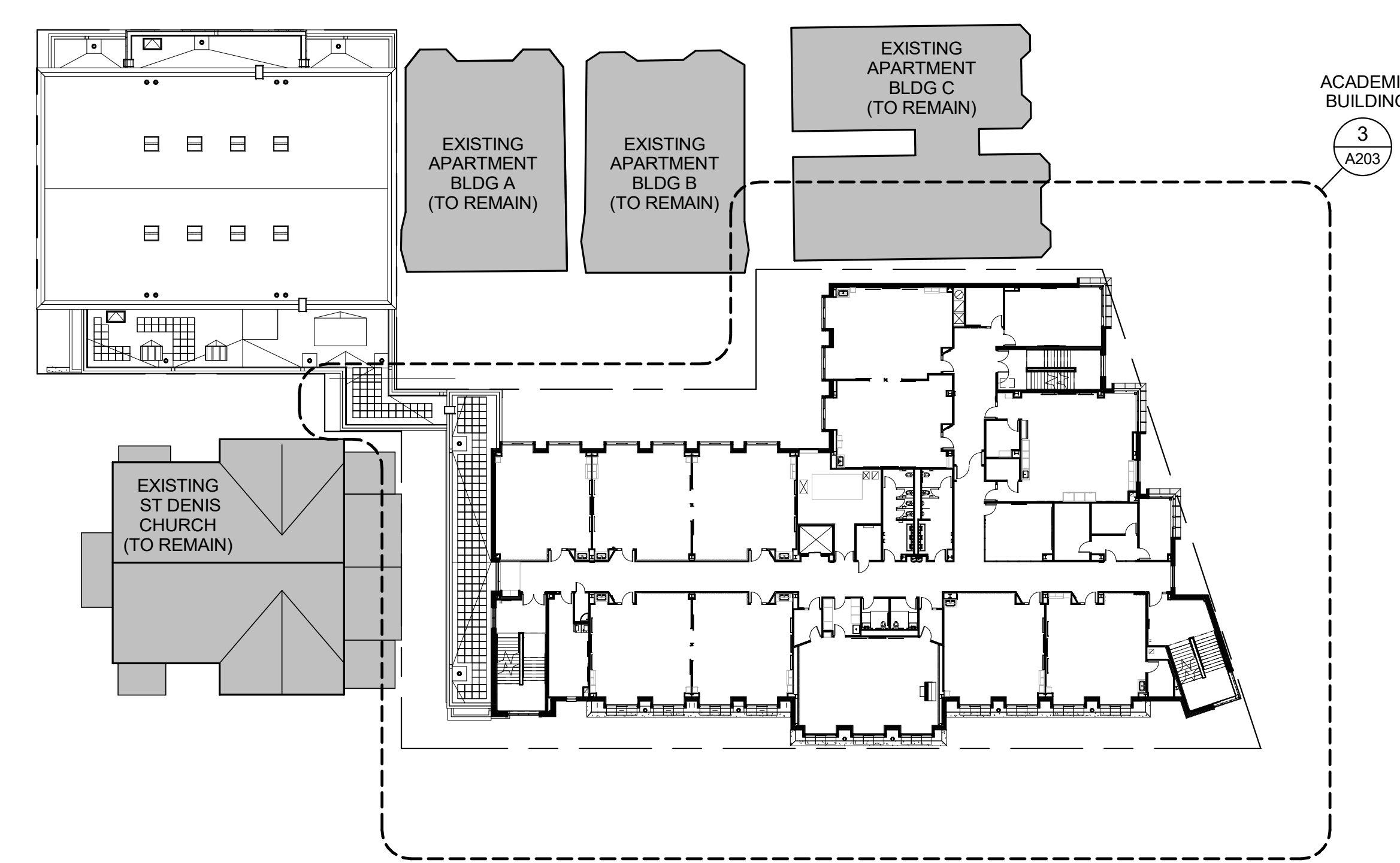
**2 OVERALL 2nd FLOOR**  
1/32" = 1'-0"



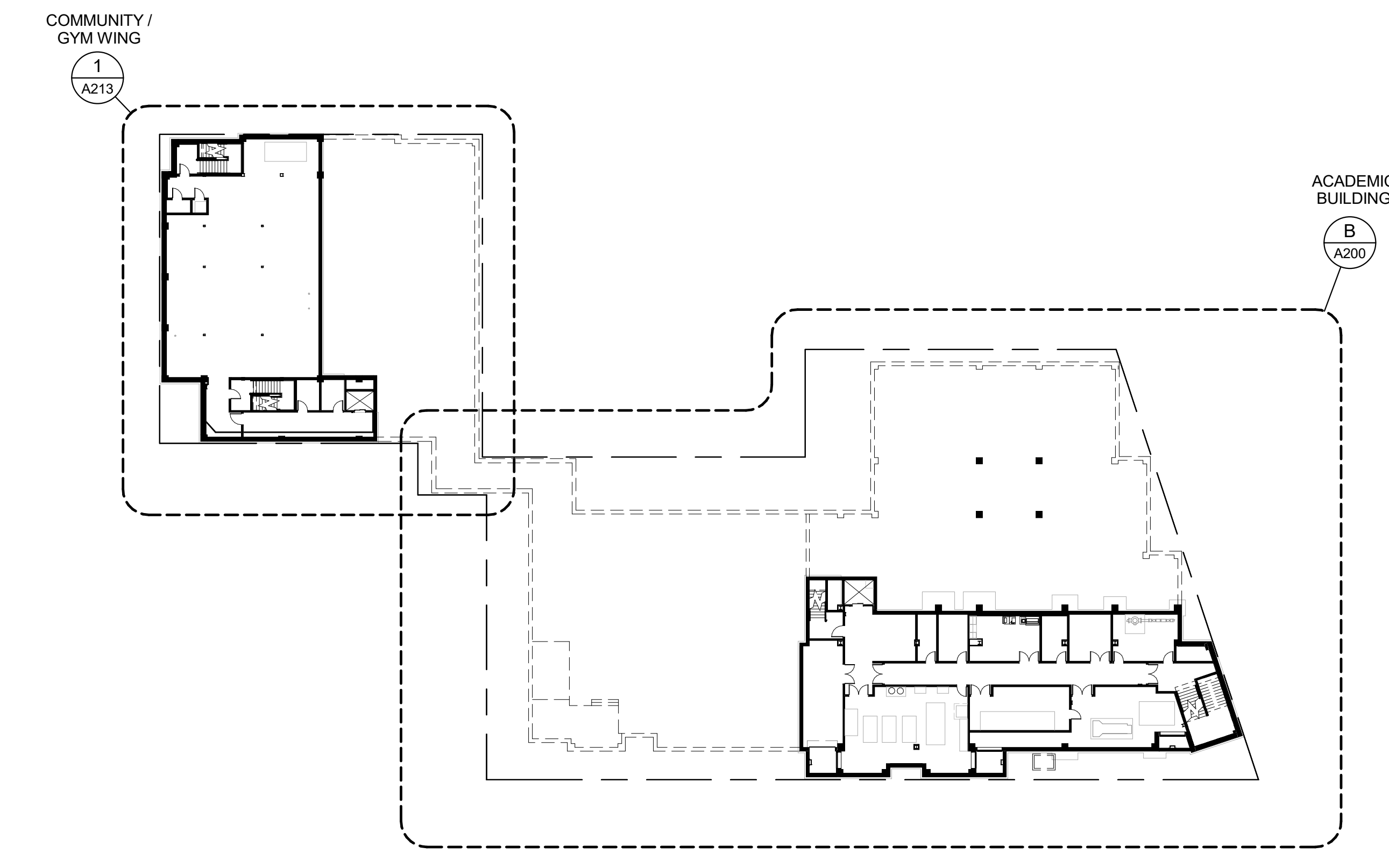
**4 OVERALL 4th FLOOR**  
1/32" = 1'-0"



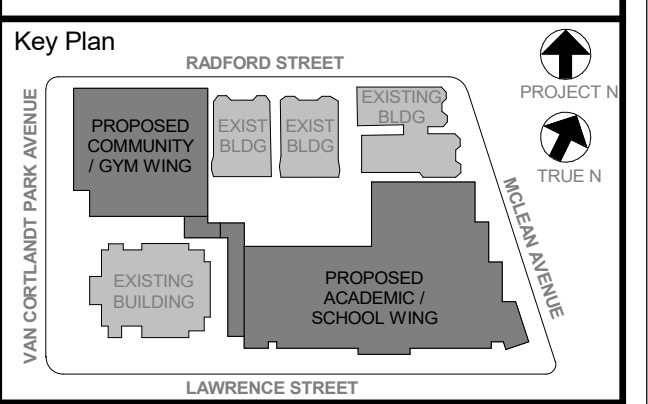
**1 OVERALL 1st FLOOR**  
1/32" = 1'-0"



**3 OVERALL 3rd FLOOR**  
1/32" = 1'-0"



**B OVERALL BASEMENT**  
1/32" = 1'-0"



NOTE: ALL LEGAL DESIGN, PERMITS, AND REGULATORY REQUIREMENTS ARE THE RESPONSIBILITY OF THE CLIENT. THE ARCHITECTS AND ENGINEERS ARE NOT RESPONSIBLE FOR OBTAINING SUCH PERMITS AND REGULATORY REQUIREMENTS. THE ARCHITECTS AND ENGINEERS ARE NOT RESPONSIBLE FOR OBTAINING SUCH PERMITS AND REGULATORY REQUIREMENTS. THE ARCHITECTS AND ENGINEERS ARE NOT RESPONSIBLE FOR OBTAINING SUCH PERMITS AND REGULATORY REQUIREMENTS.

Professional Seal

No.	Date	Issue
5	11/01/2021	ISSUE FOR BID
4	08/24/2021	NYSED ADDENDUM 1
3	07/14/2021	CONSTRUCTION DOCS - NYSED
2	12/15/2020	DESIGN DEVELOPMENT
1	08/31/2020	SCHEMATIC DESIGN

**KEY PLANS**

Job No. 2019-1026 Date 08/31/2020  
Scale AS NOTED Drawn / Checked --

Sheet Number  
**A101**