

BID ADDENDUM NO. 1

7/17/2024

Pocantico Hills Central School District
Pocantico Hills CSD – Capital Improvements Project 2
3288.008

Central School SED #: 66-08-02-04-0-001-040

Pavilion SED #: 66-08-02-04-7-007-001

The following Addendum items shall be considered a part of the contract documents prepared by HUNT ENGINEERS, ARCHITECTS, LAND SURVEYORS & LANDSCAPE ARCHITECT, DPC.
Bid Document date of June 24, 2024.

Clarifications issued by this Addendum:

N/A

Project Manual Sections issued by this Addendum:

N/A

Drawings issued by this Addendum:

AD1-L1 – STAGING SLAB PLAN
AD1-S1 – CONCRETE SLAB CONSTRUCTION DETAILS
AD1-S2 – CONCRETE SLAB CONSTRUCTION DETAILS
AD1-A1 – PRE-K REFLECTED CEILING PLAN
AD1-H1 – KITCHEN HVAC MODIFICATIONS
AD1-E1 - FITNESS CENTER EXERIOR LIGHTING
AD1-E2 - PARTIAL FIRST FLOOR - AREA B PRE-K B101

Revisions to Project Manual issued by this Addendum:

ITEM AD1-1 Refer to 01 50 00 – Temporary Facilities and Controls

AMEND subparagraph 1.15, A, 1 to read:

“A. Contractor's Field Office

1. Owner will provide space in maintenance building for temporary field office for all contractors.”

ITEM AD1-2 Refer to Section 23 74 13 – Packaged Outdoor Central-Station Air-Handling Units

AMEND subparagraph 2.3, G, 1 to read:

“ 1. Standard Terminal Block

a. Unit shall be provided with a terminal block for field installation of controls.”

Revisions to Drawings issued by this Addendum:

ITEM AD1-3 Refer to H3.1 – SCHEDULES & DETAILS

AMEND Note #4 on DOAS UNIT SCHEDULE to read, “PROVIDE FACTORY CONTROLS WITH BACKNET INTERFACE”, issued with this addendum.

ITEM AD1-4 Refer to H3.1 – SCHEDULES & DETAILS

AMEND Note #4 on ROOFTOP UNIT SCHEDULE to read, “PROVIDE FACTORY CONTROLS WITH BACKNET INTERFACE”, issued with this addendum.

ITEM AD1-5 Refer to A2.2 – PARTIAL SECOND FLOOR REFLECTED CEILING PLAN – AREA B

AMEND SECOND FLOOR REFLECTED CEILING PLAN – AREA B to remove Note #3 from Plans in ART B216 Room, as issued with this addendum.

ITEM AD1-6 Refer to A9.1 – INTERIOR FINISH & SIGN SCHEDULES

AMEND FINISH KEY to remove RT-2 and other associated data, as issued with this addendum.

ITEM AD1-7 Refer to E0.4 – SECOND FLOOR DEMOLITION PLAN – AREA B

DELETE refer to detail 1, remove demolition note D1 and D2 from room Art B216.

ITEM AD1-8 Refer to E0.4 – SECOND FLOOR DEMOLITION PLAN – AREA B

ADD refer to detail 1, add note to room Art B216 reading as follows: “REMOVE ALL WALL RECEPTACLES AND ELECTRICAL DEVICES. EXISTING HOMERUN CIRCUITS TO BE SECURED AND REUSED. REFER TO POWER PLANS FOR NEW WORK.

ITEM AD1-9 Refer to E2.1 – FIRST FLOOR LIGHTING & FA PLAN - AREA A

AMEND E2.1 – FIRST FLOOR LIGHTING & FA PLAN - AREA A with AD1-E1 - FITNESS CENTER EXTERIOR LIGHTING, as issued with this addendum.

ITEM AD1-10 Refer to E2.2 – FIRST FLOOR LIGHTING & FA PLAN - AREA B

AMEND E2.2 – FIRST FLOOR LIGHTING & FA PLAN - AREA B with AD1-E2 - PARTIAL FIRST FLOOR - AREA B PRE-K B101, as issued with this addendum.

ITEM AD1-11 Refer to E2.3 – SECOND FLOOR LIGHTING & FA PLAN - AREA B

DELETE refer to detail 1, remove any lighting, controls, and ceiling work in room Art B216..

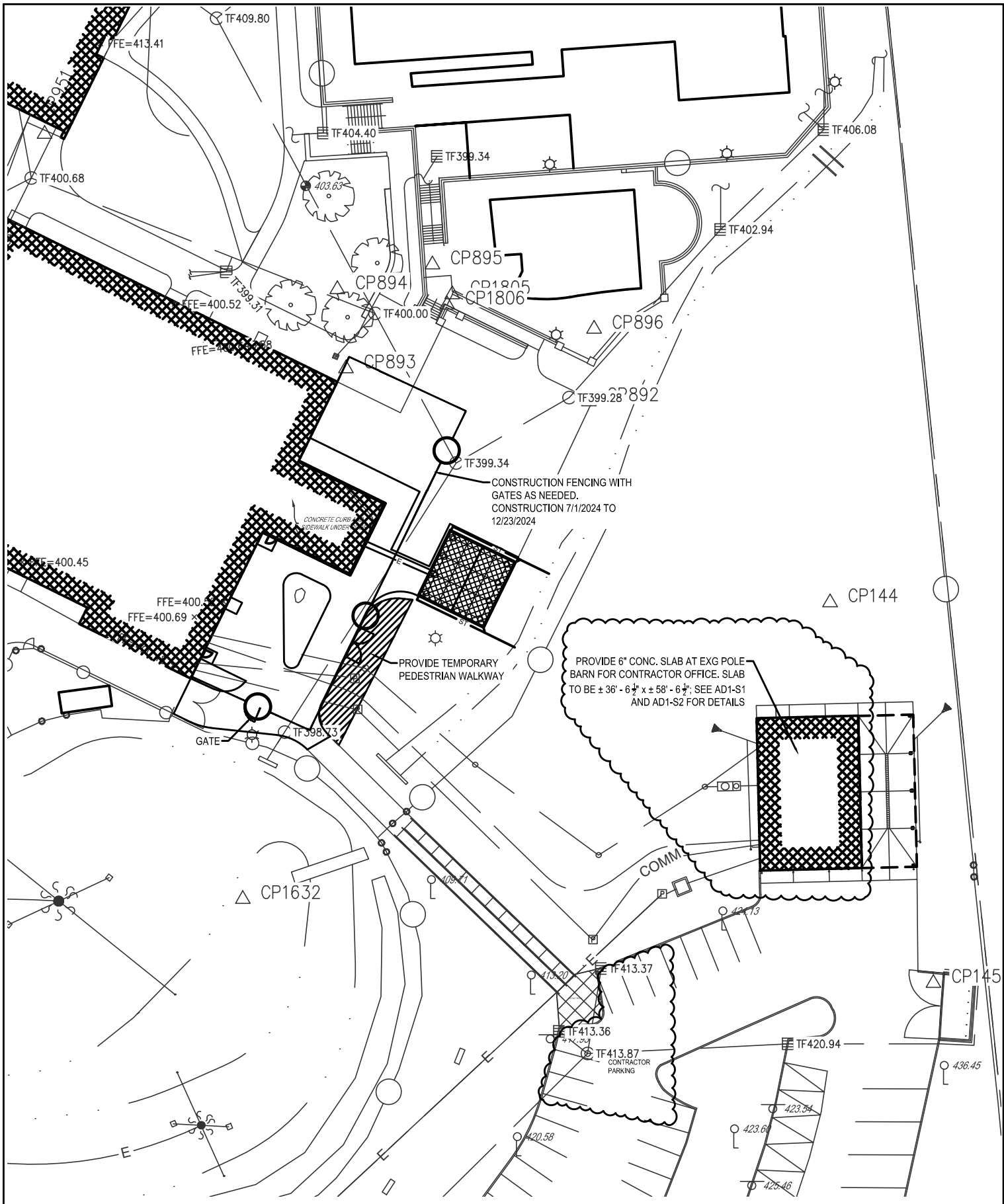
ITEM AD1-12 Refer to E3.1 – MECH UNIT & LIGHTING FIXTURE SCHEDULES & DETAILS

ADD refer to Light Fixture Schedule, add new fixture Type: D Description: 8” CAN Size: 8” D Mounting: RECESSED Voltage: UNV Lumens: 1871 LED Color Temp: 3500 Load EA. (Watts): 17 Manufacturer/Catalog No.: TGS# FL-8-8”-L-3500K-U-D-90CRI-FL-8 Finish: WHITE Remarks: PROVIDE MUD KIT Notes: -.

ITEM AD1-13 Refer to E3.1 – MECH UNIT & LIGHTING FIXTURE SCHEDULES & DETAILS

ADD refer to Light Fixture Schedule, add new fixture Type: W Description: EXTERIOR WALLPACK Size: 16”x8” Mounting: SURFACE Voltage: UNV Lumens: 5899 LED Color Temp: 3000 Load EA. (Watts): 55 Manufacturer/Catalog No.: GARDCO # 101L-16L-1000-WW-G2-3-EBPC-UNV-PCB-BK Finish: BLACK Remarks: - Notes: -.

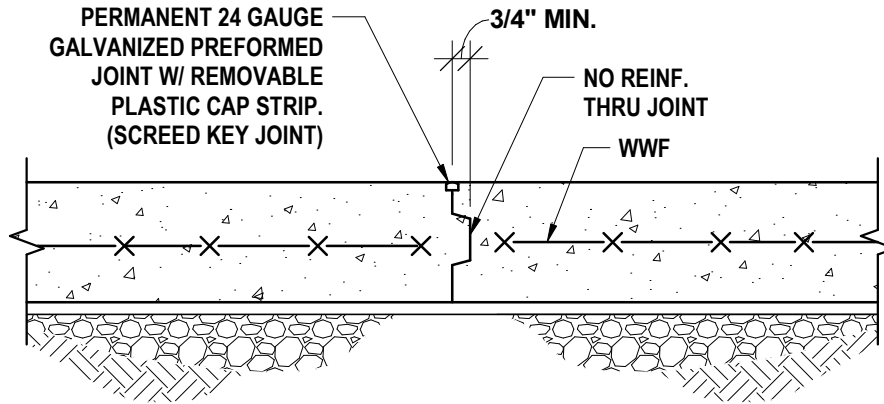
End of Addendum #1



STAGING SLAB PLAN
CAPITAL IMPROVEMENTS PROJECT 2
POCANTICO HILLS CENTRAL SCHOOL DISTRICT
 599 BEDFORD RD, SLEEPY HALLOW, NY 10591

HUNT ENGINEERS | ARCHITECTS | SURVEYORS
 HORSEHEADS, NY 607 - 358 - 1000 ROCHESTER, NY 585 - 327 - 7950
 TOWANDA, PA 570 - 265 - 4868 BINGHAMTON, NY 607 - 798 - 8081
 ALBANY, NY 607 - 798 - 8081 WWW.HUNT-EAS.COM
 NY CERTIFICATE NO. 0018220 PA CERTIFICATE NO. TSC2203131464-1

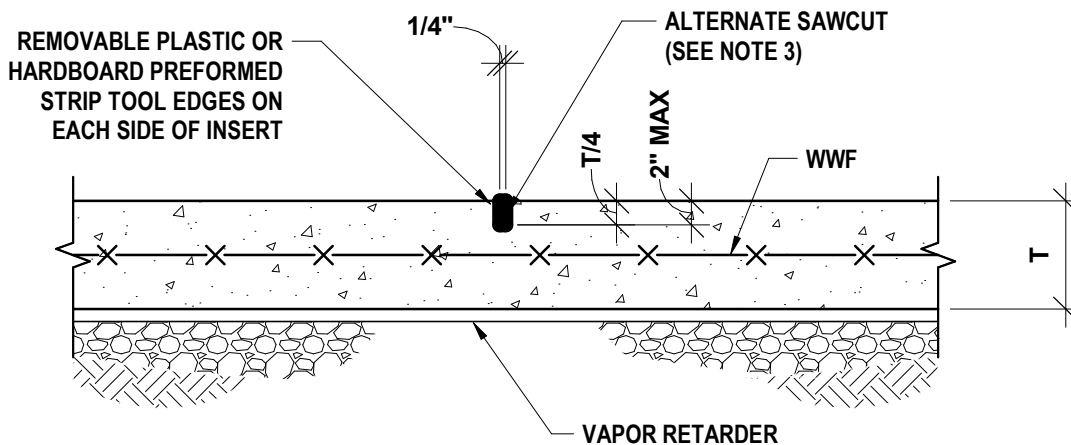
AD1-L1
 DATE:
 07/17/2024+
 PROJECT NO:
 3288.008



NOTES:

1. CONSTRUCTION JOINT MAY REPLACE CONTROL JOINT, OMIT REMOVABLE CAP STRIP.
2. REFER TO ARCHITECTURAL DETAILS FOR JOINT FILLER WHERE REQUIRED.

2 SLAB ON GRADE CONSTRUCTION JOINT
 1 1/2" = 1'-0"



NOTES:

1. FILL JOINT WITH SEALANT AFTER SLAB HAS BEEN CURED.
2. CONSTRUCTION JOINT MAY REPLACE CONTROL JOINT.
3. SAWCUT JOINTS ARE PERMITTED USING A "SOFF-CUT" MACHINE OR EQUAL IMMEDIATELY AFTER FINISHING SLAB.

1 SLAB ON GRADE CONTROL JOINT
 1 1/2" = 1'-0"

CONCRETE SLAB CONSTRUCTION DETAILS

PHASE 1A - CAPITAL IMPROVEMENTS

POCANTICO HILLS CSD

599 BEDFORD RD, SLEEPY HOLLOW, NY 10591

Copyright © 2024

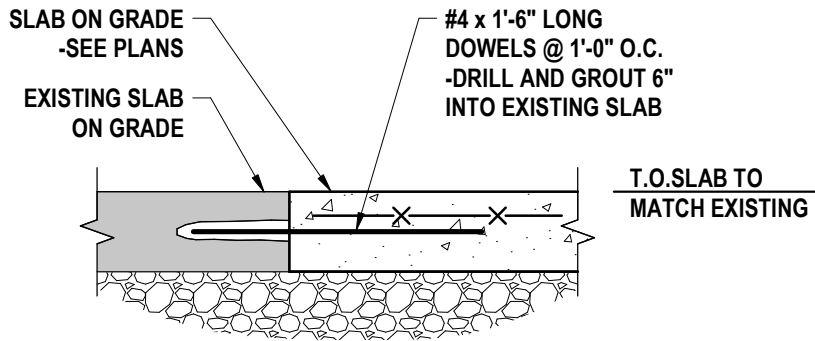
HUNT ENGINEERS | ARCHITECTS | SURVEYORS

HORSEHEADS, NY 607 - 358 - 1000 ROCHESTER, NY 585 - 327 - 7950
 TOWANDA, PA 570 - 265 - 4868 BINGHAMTON, NY 607 - 798 - 8081
 ALBANY, NY 607 - 798 - 8081 WWW.HUNT-EAS.COM
 NY CERTIFICATE NO. 0018220 PA CERTIFICATE NO. TSC2203131464-1

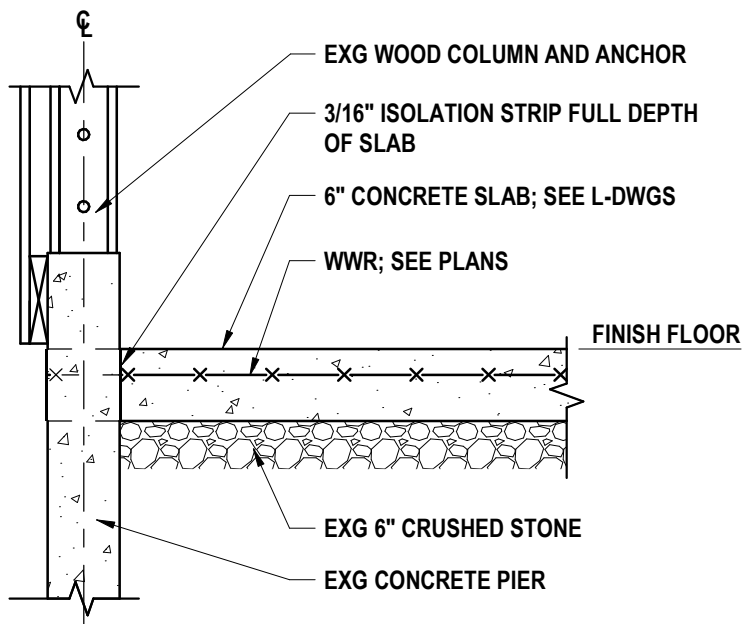
AD1-S1

DATE:
07/16/24

PROJECT NO:
3288.004



2 DOWEL AT EXISTING SLAB
 1" = 1'-0"



1 SLAB AT EXISTING PIER
 3/4" = 1'-0"

CONCRETE SLAB CONSTRUCTION DETAILS
PHASE 1A - CAPITAL IMPROVEMENTS
POCANTICO HILLS CSD

599 BEDFORD RD, SLEEPY HOLLOW, NY 10591

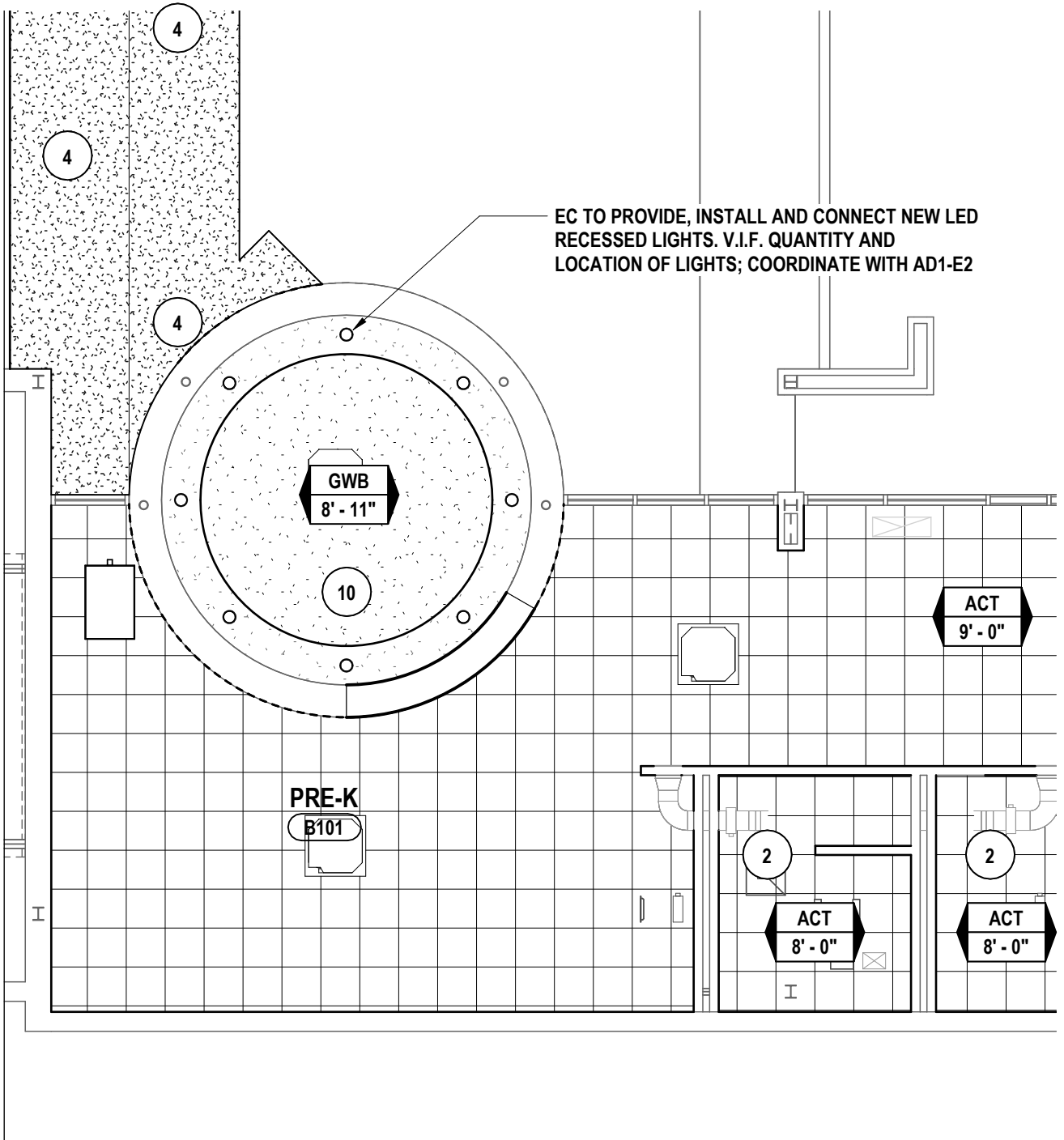
Copyright © 2024

HUNT ENGINEERS | ARCHITECTS | SURVEYORS
 HORSEHEADS, NY 607 - 358 - 1000 ROCHESTER, NY 585 - 327 - 7950
 TOWANDA, PA 570 - 265 - 4868 BINGHAMTON, NY 607 - 798 - 8081
 ALBANY, NY 607 - 798 - 8081 WWW.HUNT-EAS.COM
 NY CERTIFICATE NO. 0018220 PA CERTIFICATE NO. TSC2203131464-1

AD1-S2

DATE:
07/16/24

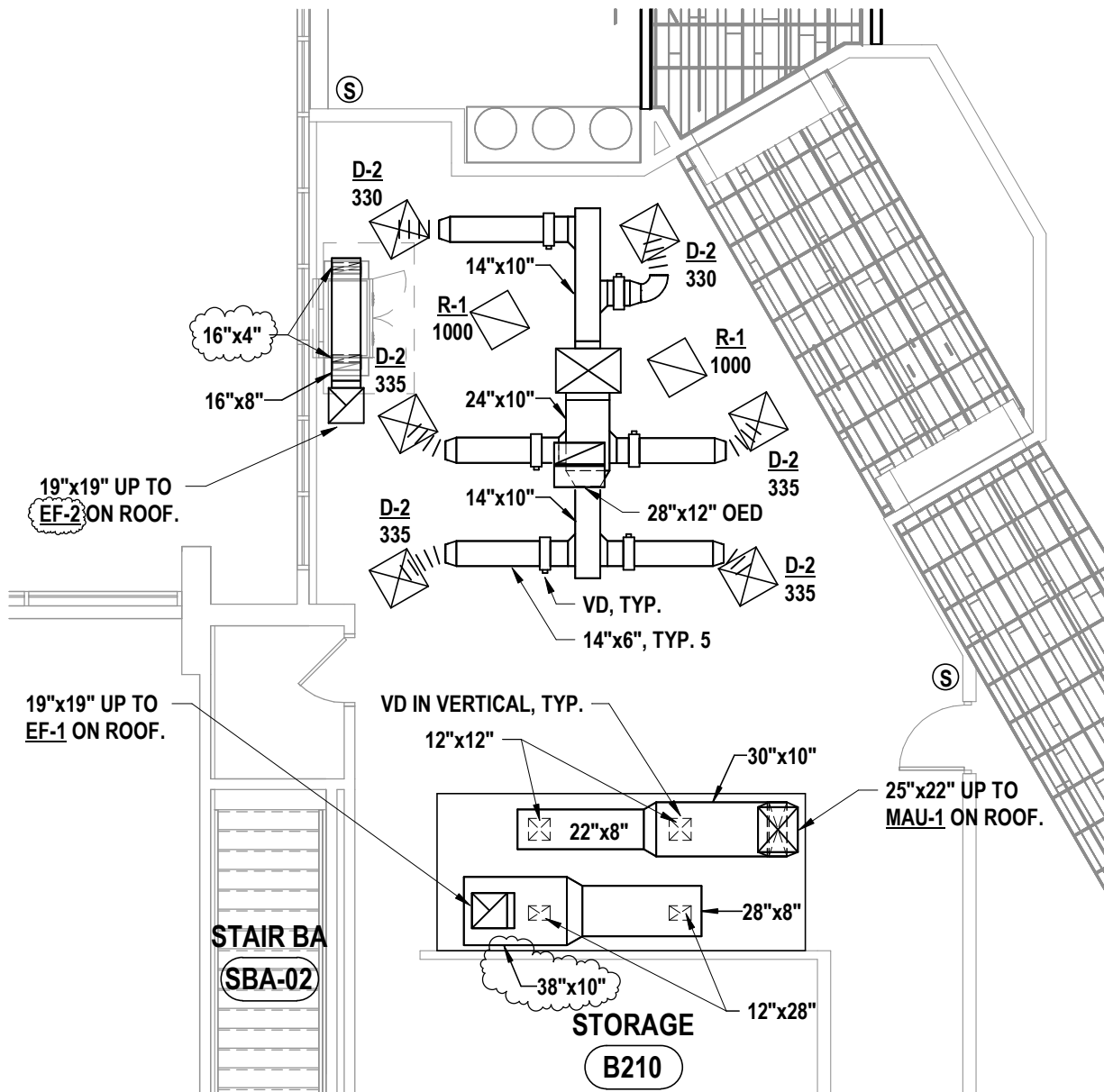
PROJECT NO:
3288.004



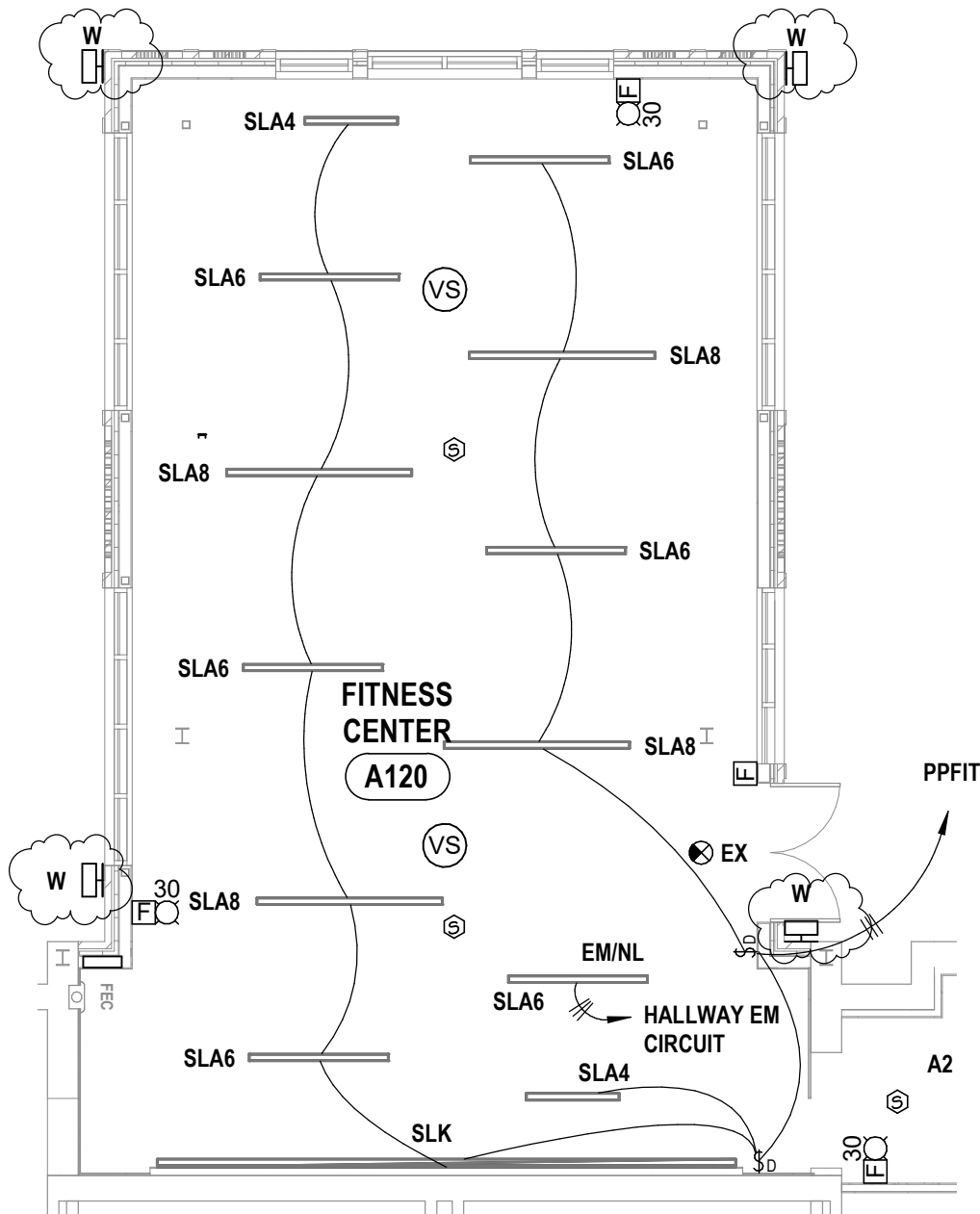
EC TO PROVIDE, INSTALL AND CONNECT NEW LED RECESSED LIGHTS. V.I.F. QUANTITY AND LOCATION OF LIGHTS; COORDINATE WITH AD1-E2

1 FIRST FLOOR PARTIAL RCP - PRE-K
1/8" = 1'-0"

<p>PRE-K REFLECTED CEILING PLAN CAPITAL IMPROVEMENTS PHASE 2 POCANTICO HILLS CSD 599 BEDFORD RD, SLEEPY HOLLOW, NY 10591</p>	<p>HUNT ENGINEERS ARCHITECTS SURVEYORS HORSEHEADS, NY 607 - 358 - 1000 ROCHESTER, NY 585 - 327 - 7950 TOWANDA, PA 570 - 265 - 4868 BINGHAMTON, NY 607 - 798 - 8081 ALBANY, NY 607 - 798 - 8081 WWW.HUNT-EAS.COM NY CERTIFICATE NO. 0018220 PA CERTIFICATE NO. TSC2203131464-1</p>	<p>AD1-A1</p> <p>DATE: 07/17/2024</p> <p>PROJECT NO: 3288.008</p>
--	--	--

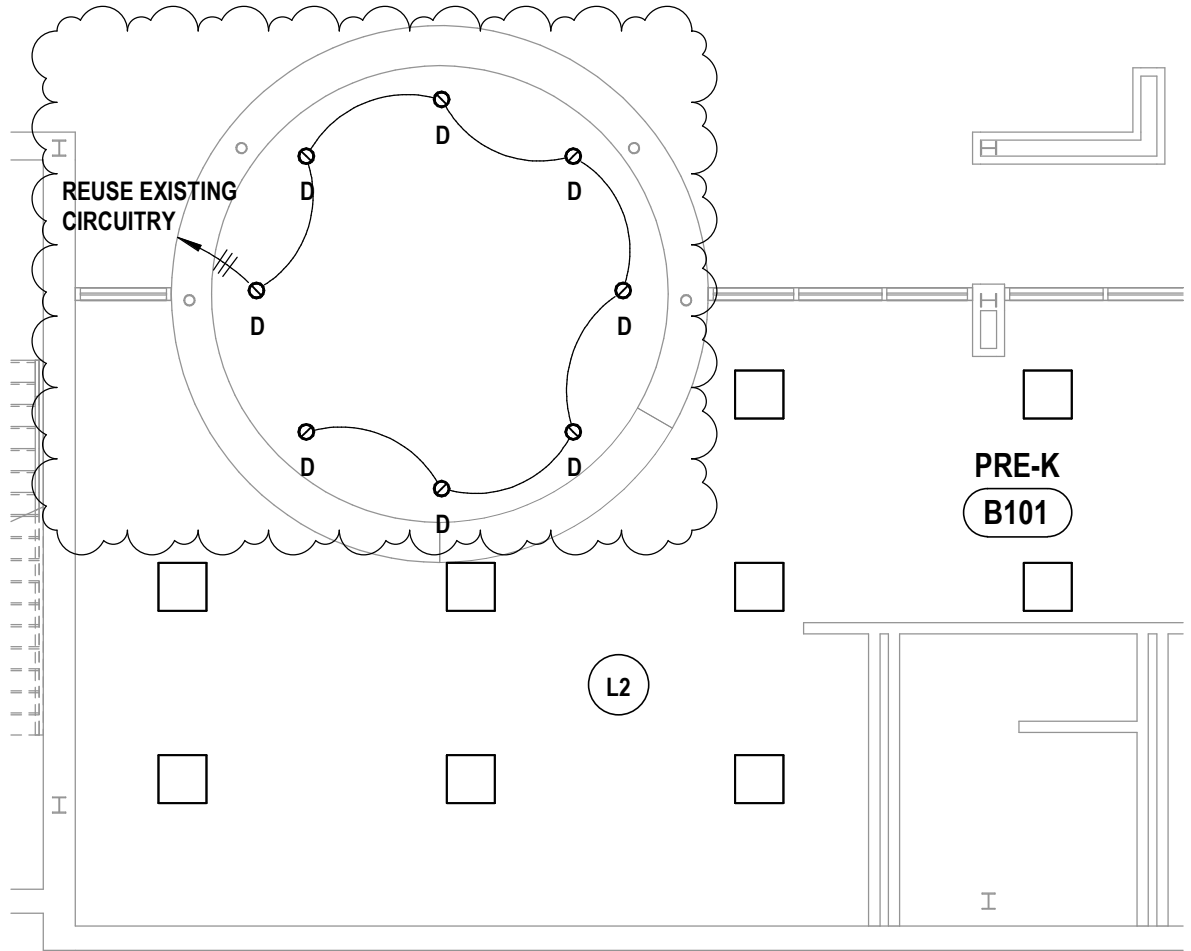


1 SECOND FLOOR NEW WORK PLAN - AREA B MODIFICATIONS
 1/8" = 1'-0"




1 **FITNESS CENTER EXTERIOR LIGHTING**
 1/8" = 1'-0"

<p>FITNESS CENTER EXTERIOR LIGHTING PHASE 2 CAPITAL IMPROVEMENTS POCANTICO HILLS CSD 599 BEDFORD ROAD, SLEEPY HOLLOW, NY 10591</p>	<p style="writing-mode: vertical-rl; transform: rotate(180deg);">COPYRIGHT © 2021</p> <p>HUNT ENGINEERS ARCHITECTS SURVEYORS HORSEHEADS, NY 607 - 358 - 1000 ROCHESTER, NY 585 - 327 - 7949 TOWANDA, PA 570 - 265 - 4868</p>	<p>AD1-E1</p> <p>DATE: 07/16/24</p> <p>PROJECT NO: 3288-008</p>
--	---	--



1 PRE-K B101 MODIFIED LIGHTING
 1/8" = 1'-0"

PARTIAL FIRST FLOOR - AREA B PRE-K B101	 HUNT ENGINEERS ARCHITECTS SURVEYORS HORSEHEADS, NY 607 - 358 - 1000 ROCHESTER, NY 585 - 327 - 7949 TOWANDA, PA 570 - 265 - 4868	AD1-E2
PHASE 2 CAPITAL IMPROVEMENTS		
POCANTICO HILLS CSD 599 BEDFORD ROAD, SLEEPY HOLLOW, NY 10591		PROJECT NO: 3288-008

COPYRIGHT © 2021