

BULLETIN # 0 6



DATE: January 5, 2024

TO: Laura Li Industries, LLC
Attn: Vincent Sessano

FROM: Brian Dunn, AIA
KG+D Architects, PC

PROJECT: Harrison Recreation & Community Center – PHASE 1
Harrison, NY

RE: Additional Electrical Conduit- Reference ASK-06R1

Message:

Due to the increased electrical service required for Phase 2, please provide pricing to add an additional 4” diameter conduit to Conduit Type 4 and an additional 4” diameter conduit to Conduit Type 6 as shown on attached ASK-06R1.

Cc: Town of Harrison Engineering Department
File

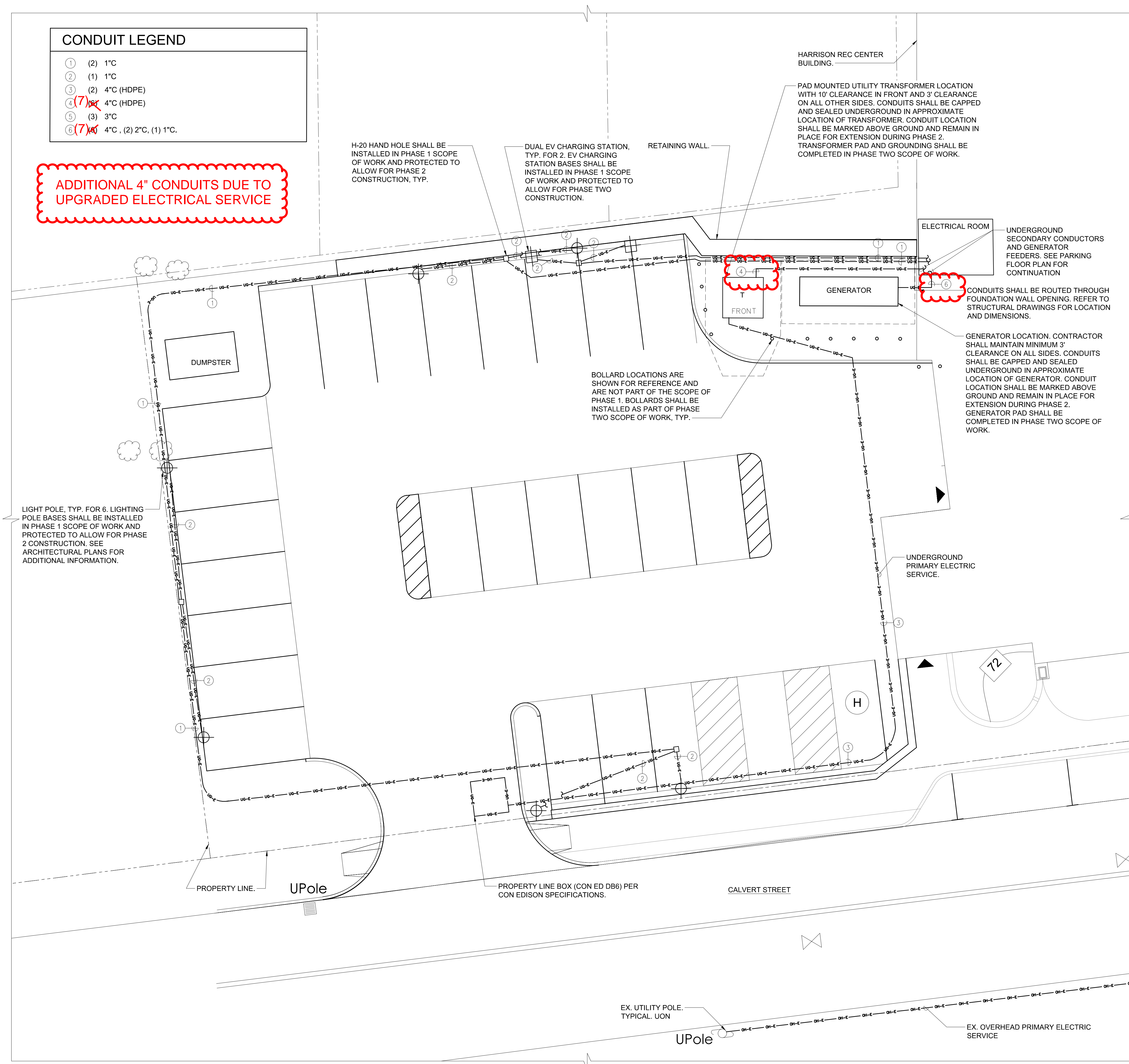
Encl: ASK-06R1

KG+D Architects, PC

285 Main Street, Mount Kisco, New York 10549
914.666.5900 kgdarchitects.com

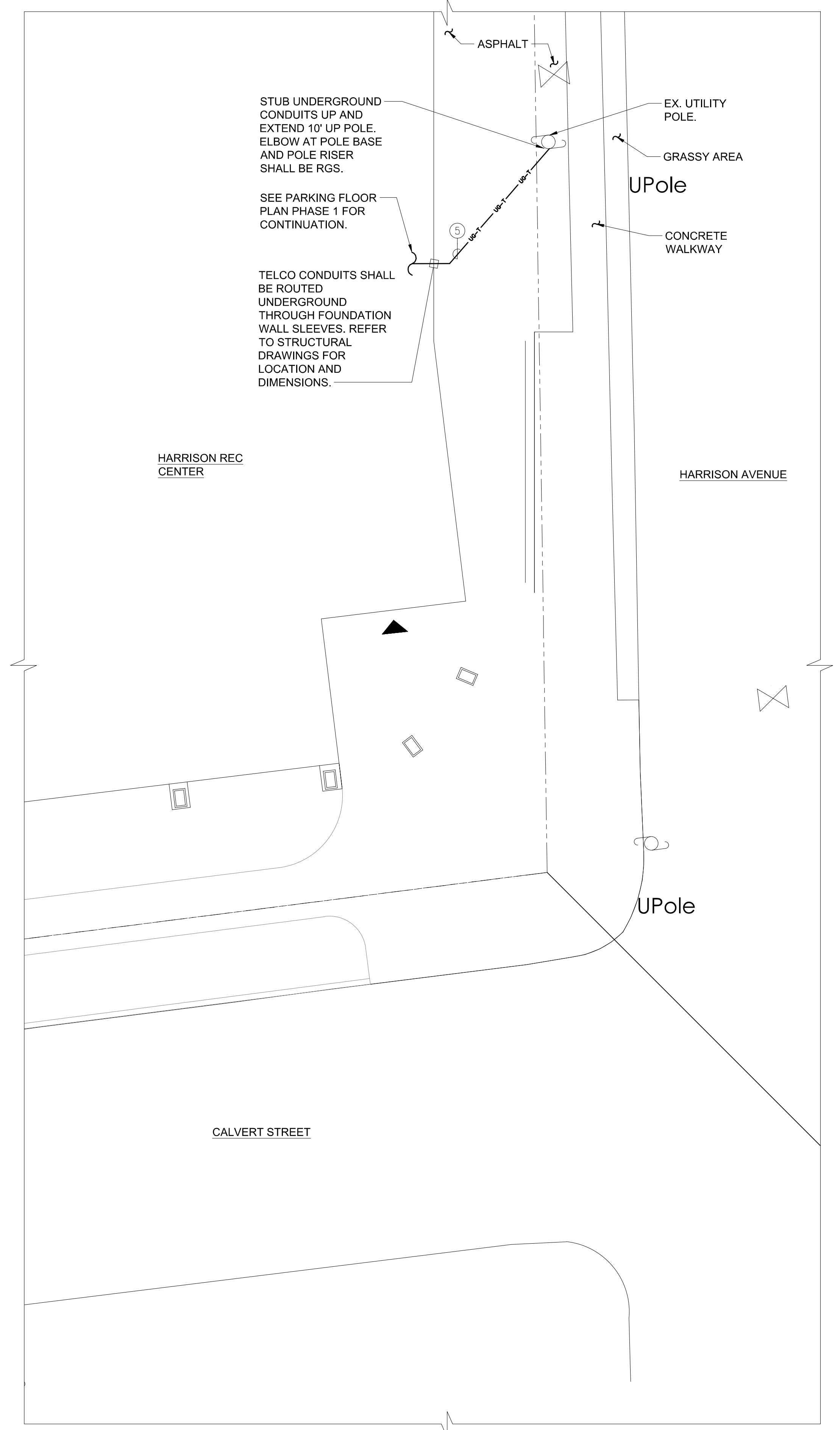
CONDUIT LEGEND	
①	(2) 1" C
②	(1) 1" C
③	(2) 4" C (HDPE)
④	(7) 4" C (HDPE)
⑤	(3) 3" C
⑥	(7) 4" C, (2) 2" C, (1) 1" C.

ADDITIONAL 4" CONDUITS DUE TO UPGRADED ELECTRICAL SERVICE

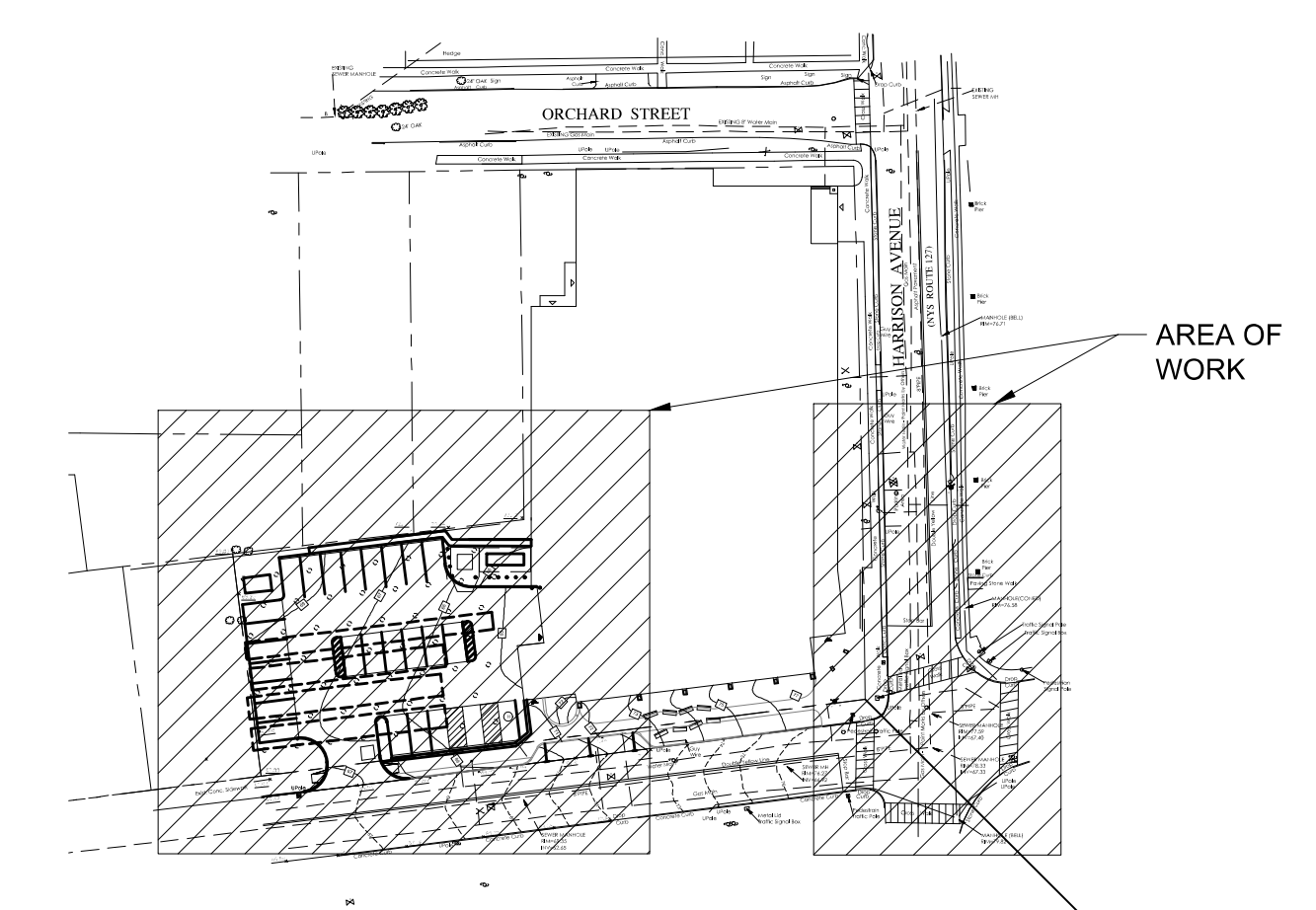


3 ELECTRICAL SITE PLAN
SCALE: 1/8" = 1'-0"

- NOTES:
- 1.) ALL ELECTRICAL CONDUITS ARE ROUTED UNDERGROUND, UON.
 - 2.) ALL ELECTRICAL CONDUITS SHALL BE PROVIDED WITH DRAGLINES.
 - 3.) ALL CONDUITS SHALL BE SCHEDULE 40 PVC, UON.



2 ELECTRICAL SITE PLAN
SCALE: 1/8" = 1'-0"



1 KEY PLAN
SCALE: NONE

ASK-06R1
01/05/24

HARRISON RECREATION & COMMUNITY CENTER
New Construction - Phase 1
Town / Village of Harrison
270 Harrison Avenue
Harrison, NY 10528

KG+D listen imagine build
KG+D ARCHITECTS, PC
285 MAIN STREET - MOUNT KISCO, NEW YORK 10549
P:914.666.5900 KGDARCHITECTS.COM

OLA Consulting Engineers
50 Broadway,
Hawthorne, NY 10532
914.747.2800
8 West 38th Street,
Suite 501
New York, NY 10018
646.849.4110
olace.com

CONSTRUCTION DOCUMENTS

NOTE: ALL DESIGN, MATERIAL ARRANGEMENTS AND PLANS PREPARED OR REPRESENTED BY THIS DRAWING ARE OWNED BY AND ARE THE PROPERTY OF KG+D ARCHITECTS, PC. NO PART OF THIS DRAWING OR ANY INFORMATION CONTAINED HEREIN SHALL BE REPRODUCED OR TRANSMITTED IN ANY FORM OR BY ANY MEANS, ELECTRONIC OR MECHANICAL, INCLUDING PHOTOCOPYING, RECORDING, OR BY ANY INFORMATION STORAGE AND RETRIEVAL SYSTEM, WITHOUT THE WRITTEN PERMISSION OF KG+D.

WRITTEN DIMENSIONS ON THIS DRAWING SHALL HAVE PRECEDENCE OVER SCALE DIMENSIONS. CONTRACTOR SHALL VERIFY ALL ACTUAL DIMENSIONS AND CONDITIONS ON THE JOB AND THE ARCHITECT MUST BE NOTIFIED OF ANY VARIATION FROM DIMENSIONS AND CONDITIONS SHOWN. SHOP DETAILS MUST BE SUBMITTED TO THIS OFFICE FOR APPROVAL, BEFORE PROCEEDING WITH FABRICATION.

ALTERATIONS BY ANY PERSON IN ANY WAY OF ANY ITEM CONTAINED ON THIS DOCUMENT UNLESS ACTING UNDER THE DIRECTION OF THE LICENSED ARCHITECT WHOSE PROFESSIONAL SEAL IS AFFIXED HERETO, IS A VIOLATION OF TITLE 16, SECTION 2601.1 OF THE NEW YORK STATE LAW.

© COPYRIGHT KG+D ARCHITECTS, PC. ALL RIGHTS RESERVED.

Professional Seal

3 07/12/2023 ISSUE FOR BID - PHASE 1

ELECTRICAL SITE PLAN

Job No.	Date
NKGD0207.00	06/29/2023
Scale	Drawn / Checked
AS NOTED	HM / RC
Sheet Number	VB / ML / DS

M-202