

# B I D A D D E N D U M 0 4

The attention of bidders submitting proposals for the subject project noted above is called to the following Addendum to the Contract Forms and Specifications.

The items set forth herein, whether of omission, addition, substitution or clarification, are to be included in and form a part of the proposal submitted.

THE NUMBER OF THIS ADDENDUM MUST BE ENTERED IN THE SPACE PROVIDED ON THE BID PROPOSAL FORM.

This Addendum consists of the following information:

Part 1	Division #0, Bidding and Contract Requirements.....	NOT USED
<b>Part 2</b>	<b>Technical Changes, Architectural, Structural and Civil</b>	
Part 3	Technical Changes, Mechanical, Electrical and Plumbing .....	NOT USED
<b>Part 4</b>	<b>Drawing Changes, Architectural and Civil</b>	
Part 5	Drawing Changes, Structural.....	NOT USED
Part 6	Drawing Changes, Mechanical, Electrical and Plumbing.....	NOT USED
<b>Part 7</b>	<b>Clarifications</b>	
<b>Part 8</b>	<b>New Issues</b>	

## **Part 2 Technical Changes, Architectural, Structural and Civil**

---

1. Delete Section 085110 Aluminum Windows

## **Part 4 Drawing Changes, Architectural and Civil**

---

1. Revised Sheet A204 Roof Plan
2. Revision to Drawing E-302, Electrical First Floor Plan: CONTRACTOR SHALL PROVIDE A DUPLEX RECEPTACLE ON THE SOUTHEAST WALL OF THE FITNESS 123 IN FRONT ENTRY DESK FOR POWER LOCKER CHARGING STATION CONNECTION. WIRING SHALL BE 2-#12 AND 1-#12 GND IN 3/4"C. PROVIDE (1) 1P-20A CIRCUIT BREAKER IN PANELBOARD PN1A UTILIZE SPACE #29.

## **Part 7 Clarifications**

---

1. **Section 064020 – Part 2 Products 2.1 Millwork Schedule**  
Item B - Note there are three (3) transactions counters-located in Room 100, 101, 103. Locker Room benches – Change from Hardwood to Phenolic and integrate into locker system.
2. **Section 105110 – Metal Lockers**
  - a. Part 1 General. Item 1.2 – There are no multitier steel lockers. The scope of metal lockers only includes Digilock Juice Bar lockers.
  - b. Part 2 Products, 2.1G – Update locking to be Versa Electronic lock.

3. **Section 105113 – Phenolic Lockers**
- a. 1.2 Description of Work – Add – A1. Phenolic Lockers – 5-tier, sloped top and 6”h base
- Part 2 Products**
- b. 2.1 H. The Z shaped lockers are in the locker rooms. Format: 15”w x 15”d x 68”/71”h with an attached continuous Phenolic bench supported by brackets and legs. Product to be similar or equal to Foreman locker systems Signature Phenolic lockers. The multitier 5 high lockers are located in the Hallway, Style: Traditional Plus Series, Format: 15” x 15” x 5h.
- c. 2.2 E – Omit reference to comply to UMass design guidelines.
4. Q: Doors 212A, 212B; & 212C are called out to receive frame Type 03. There is no frame 03. Please advise which frames these openings receive.  
A: Doors 212A, B & C are to receive Frame Type H2.
5. Q: Spec 075300, 2.7 Electric Leak Detection (ELD). Specs state to install an ELD at locations where overburden will be installed on the roof system. However, specified manufacturers of the ELD have stated that a black EPDM membrane system cannot be effectively tested via ELD. A Infrared Scan is suggested or a non-conductive roof membrane to be specified. Sheet A204 notes Greengrid Roof System. Please advise if an ELD or IR Scan is required at areas where overburden will be installed over the roof system.  
A: ELD is not required at the vegetated roof due to the EPDM. Provide infrared scan and analysis.
6. Q: Provide Drawings C-400, C-401, C402, & C-403  
A: Phase 1 sheets C400, C401, C402 & C403 provided for reference.
7. Q: Please advise what type of window is shown on drawing A410/11 Pantry 206.  
A: Elevation 11/A410 incorrectly indicates glazing in the opening. The opening is a servery into the space from the Pantry and has a wood coiling door as shown in detail 3/A441.
8. Q: Please provide size of Overhead Coiling Garage Door. It is not included in the Door schedule. Please advise the location of 1R HM Frame. Will updated Door Schedule Dr. 911 be provided reflecting a lot of changes in Addendum 2? Please be more specific: exterior 1<sup>st</sup> & 2<sup>nd</sup> floor glazing 1A-1G & 2A-2H dr. A913 by spec. 084410 or 084110?  
A: For bidding purposes, the size of the OH Garage door is 19’-8”x8’-0” high. Window Type 1R and 1P are in Recreation Room 106. 1A-1G and 2A-2H are storefront types, see specification section 084410.
9. Q: Provide manufacturer and part numbers for speakers and the video projector.  
A: Speakers, projectors, etc. are not provided in the contract. Infrastructure to support and connect the equipment such as conduit, wiring, etc. is to be provided under this contract.
10. Q: The speakers only have a backbox specified. Is that the extent of our work? Regarding the main switchboard, can we furnish the standalone ATS and cable connect to the switchboard, instead of a built in ATS?  
A: The backbox is included in Phase 2. Speakers, projectors, etc. are not provided in the contract. Infrastructure to support and connect the equipment such as conduit, wiring, etc. is to be provided under this contract.

11. Q: The security drawings have been prepared by ITG Larsen and are part of the project bid package. ITG Larsen says it has no pricing or responsibility for security equipment for this project and is not contracted or supplying security equipment. As the EC bidding this project, how are we handling the security portion question: A. Are we just providing the cabling without any installation or terminations? B. Or are we buying and installing security equipment and hiring an approved vendor for parts and smarts? C. And if so, is ITG Larsen the approved vendor for parts and smarts for this project?  
A: The Contractor is to provide the infrastructure; conduits, supports, etc. The “parts and smarts” are not in the contract.
12. Q: Is Division 27: Communications supply by Owner? Is Division 27: Communications installed by Electrical Contractor?  
A: The Contractor is to provide the infrastructure; conduits, supports, etc. The “parts and smarts” are not in the contract.
13. Q: Is AVV System supplied by Owner? Is AVV System installed by Electrical Contractor?  
A: The Contractor is to provide the infrastructure; conduits, supports, etc. The “parts and smarts” are not in the contract.
14. Q: Confirm that all ductwork material will be G90 Galvanized with factory or shop applied antimicrobial coating as per specification section 233133-2.4-G.  
A: All the ductwork will be G90 Galvanized with factory or shop applied antimicrobial coating per 233133-2.4-G.
15. Q: Door type FG1 is not on the door schedule. Does this door exist on the floor plan?  
Door FNG is not on the door schedule. Does this door exist on the floor plan?  
Door tag 115 notes hardware set 1.1 on the door schedule. Hardware set 1.1 is not in the specification section 087100. Hardware set 1.0 is specified for door 115 on specification section 087100-19, but that is for a single door. Which hardware set applies to door 115?  
Door tag 122 specifies door type F, but elevation N on A301 is shown as a door type with glass. Which door type applies to door 122?  
A: Door Type FG1 is not in the project currently. Door Type FNG is not in the project currently. Door 115 Hardware is intended as the same components as Hardware Set 1.0 except for a door pair not a single. Door 122 is Door Type F. The North Elevation on A301 incorrectly shows glazing.
16. Q: It appears that Inpro materials (tags VWC-1 and VWC-2) are referenced, but the documentation includes only a room finish schedule and lacks a material legend. Consequently, we are unable to determine the allocation of materials, such as color variations, to their respective locations.  
A: VWC1 – Wolf Gordon, Rampart, Impact resistant Wallcovering, 100% vinyl, 35 oz. 52-54”w Class A, Cal 01350 compliant for air quality Style: Grain, Color: GAI 5103 White Oak  
VWC2 – Omit. Wall to be painted an accent color.
17. Q: In sections 074646-5 & 074646-6, both Design 1 & Design 2 for Fiber Cement Panels are mentioned. Does this imply that both designs are acceptable, or are they intended for use in separate locations?  
A: The intent is that both are acceptable.

18. Q: Please provide us with the complete specifications for the green roof.  
A: Green Roof specifications – See Addendum #2.
19. Q: Provide specifications on the Granite Curb (Item 609.0201) to be provided along Harrison Ave., Drawings C101, C104.  
A: All granite curbing is to be per NYSDOT standard specification.
20. Q: Section 083513, Identify the location of the Glazed Folding Doors.  
A: Spec Section 083513 “Glazed Folding Doors” refers to the glazed section between column lines B.6 and C.6 on the second floor between Viewing 200 and the Gym.
21. Q: Section 116640, calls for a “Field House Scoreboard”, but it does not seem to be shown on the bid docs. Provide location(s) and details.  
A: The Field House Scoreboard is not in the project. The scoreboard is the Basis of Design Daktronics BB-2125 and as shown on A403.
22. Q: The Glycol System requires 20% Propylene Glycol Fill:  
A. Is the Phase 2 contractor responsible for Furnish and Fill of both the Phase 1 Pipe (& well pipe) & Phase 2 Pipe?  
B. If Yes and Phase 2 contractor is to furnish & fill Phase 1 & Phase 2 Pipe, provide Phase 1 pipe size & footages or total gallons for Phase 1 Pipe.  
A: Phase 2 Contractor is responsible for furnishing and installing Glycol in both Phase 1 and Phase 2 piping. Phase 1 piping is currently pressurized with air and capped. Piping is 2” diameter at Phase 1. Overall footage length may be determined from the as-built location of the wells. Each well is 495 feet deep.
23. Q: Generator is not indicated on Mechanical Drawings (Other than M-401 Site Plan) or in Mechanical spec. Spec. 263213 indicates Diesel Generators. Is there any work associated with Emergency Generator for the Mechanical contractor? (Other than some BMS/DDC Monitoring/Control)  
A: The Generator is provided by the Contractor. Mechanical work outside of the BMS/DDC portion of the installation is not expected.
24. Q: Will fuel oil systems and generator exhaust be required for the Diesel Generators.  
A: Fuel Oil and exhaust are required for the Generator.
25. Q: Will Orchard be completely off limits or only for ongoing deliveries, day-to-day activities etc? If needed, will we be able to bring a crane on site via road access off Orchard? Advise as to specific limitations.  
A: Orchard Street will remain off limits for daily access. Limited access for a crane/lift will be granted with adequate notification to the Owner and Architect.
26. Q: Advise if epoxy grout is required at tiled floors. If so, please provide specific tile floor locations.  
A: Provide epoxy grout in accordance with the schedule in 093000-3.5-1A to 1D.

27. Q: Advise as to the extent of work that has been completed under the Phase 1 contract for the site mechanical geothermal system. Provide the exact demarcation point. Who is responsible for final placement of equipment in mechanical room, connections, testing, commissioning etc. (M-401)
- A: The geothermal system from Phase 1 consists of the placement of the wells, headers and piping which are currently pressurized with air and capped in the location of the mechanical room. The Phase 2 Contractor is responsible for the balance of the system including but not limited to, the placement of the equipment, connections, testing, commissioning, etc.
28. Q: Confirm all work shown on Drawing E-011 is the responsibility of the Phase 2 Contractor and no work has been previously installed under Phase 1.
- A: The work shown on E-011 was not installed in Phase 1. The Phase 2 Contractor will provide the conduit, wiring, fixtures, etc.
29. Q: Spec. Sec. 071100 Bituminous damp proofing is given, but related work is not shown on drawings. Please clarify where this work is applicable.
- A: Bituminous damp proofing was applied to the foundations. It is not required currently for Phase 2.
30. Q: Spec. Sec. 072100 calls for rigid insulation under slab on grade while detail 1/S201 does not show any insulation under slab on grade. Please clarify.
- A: Provide insulation below slab on grade at 24" wide for the perimeter of the SOG. Not required in unconditioned spaces, for example the Parking Garage, see EF/A803, ED/A803.
31. Q: Refer to drawing A932, detail # 2 shows walkway pads at roof. However, on drawing A204 walkway pads are not shown anywhere on roof plan. Please provide quantity/ extent for bidding purpose
- A: Walkway pads to be installed at all ladders as shown in detail on A932. Walkway pads will also be required on paths to all the roof top mechanical equipment and at the center of the gym roof to the ladder at the low roof on the north side.
32. Q: Refer to finish schedule at A504, floor finish for rooms (B01-B04 & B06-B08) is concrete. Please clarify if there is any finish on concrete surface?
- A: Concrete floors at B01-04 and B06-08 are to receive sealer per spec section 033000-2.5.
33. Q: Refer to dwg. A901 partition Type "2A, C, 1C, 2C, 2M, P, 1S, 2S" are given but not marked on plans. Please clarify where these types are applicable?
- A: Partition Type Schedule on A901 includes wall types that are not included in the project. Please refer to the floor plans for partition types.
34. Q: What is the bid opening time?
- A: The bid opening time is 3:00pm on July 22, 2024.
35. Q: Specification section for toilet accessories do not include all items requested to be included with in the toilet rooms. Please provide information in these other requested items. (baby changing stations, hand dryers, etc.)
- A: Toilet Accessories to be by manufacturers listed. Standard models to be priced.
36. Q: Please provide the lock requirements or the lockers in specification section 105110.
- A: The locks for the lockers are to be integrated mechanical combination locks.

37. Q: The door schedule indicates a fire rating is required for door #SA1A & its frame. The door schedule also indicates that the frame type for this door is 01m. This is incorrect as exterior elevations show this door # in frame type 1Y which is a curtain wall. Please confirm that a fire rating for door #SA1A is required & understand that if a fire rating is required for the door, the entire curtain wall frame measuring 3'-4" x 29'-9" will need to be fire rated. If a fire rating is required, please also issue a fire rated curtain wall spec.
- A: Door SA1A is not required to be fire rated.
38. Q: The door schedule says that door #'s 114A, 114B, 114C, 114D are aluminum doors with aluminum frames and indicates the frame type as H3. Frame type H3 is a hollow metal frame according to sheet A912. Please clarify if the previously mentioned door numbers should be aluminum doors with aluminum frames or hollow metal doors with hollow metal frames. Please also clarify fire rating requirements for these doors per the note on A202.
- A: Doors 114A-D are all aluminum. 114C and 114D are 1 hour rated. The operable partition on the 5.7 line is glazed. The basis of design in the Nanawall product.
39. Q: Division 8: Please advise on the frame types for doors 113A and 113B.
- A: Doors 113 and 113B are to receive Frame Type 02M and 01M.
40. Q: Please clarify frame type for frame 1R & 1P. These frames were assumed to be hollow metal like the other interior glazed frames they are located next to, but they are incorrectly included in the first floor *exterior* glazing section of the frame elevations on sheet A913. Frames 1R & 1P are interior glazing. Please clarify if the frames are hollow metal or aluminum.
- A: The frames for 1R and 1 P are hollow metal.
41. Q: Division 8: Please refer to drawing A203 in viewing room 200. There appears to be unlabeled storefront; advise.
- A: The "unlabeled storefront" in Viewing Room 200 is a pivoting wall system, basis of design is Nanawall.
42. Q: Please clarify where window type 1B shown on sheet A913 occurs on the project. It does not appear to be shown on the exterior building elevations.
- A: Window type 1B is shown on E/A301. It is located in the north east corner of the Fitness Room 123.
43. Q: Division 09: Please confirm the scale of the drawings on A502.
- A: The scale of the drawing on Sheet A502 is 1/8"=1'0".
44. Q: The door schedule on sheet A-911 does not indicate a required fire rating for door #'s 114C 114D & it's frame, but the floor plan on A-202 has a note pointing towards these doors that says 'fire rated glass required @ this door'. Please clarify if these doors and frame are required to be fire rated aluminum system. If it is to be fire rated aluminum please indicate a duration to be included and provide a spec section.
- A: Doors 114C and 114DE and their frames are to be 1 hour fire rated.

45. Q: Division 21 & 22: Drawing P-201 indicates that we are to connect to the existing 3" CW line and the 6" Fire Water Service line just after the control valve, yet on the walk through the control valves were not present. Are these control valves part of Phase 1?  
A: The control valves shown on P-201 are Phase 1 scope.
46. Q: Division 26: Drawing E-401 – Indicates a rectangular box with 'BSD', please clarify what the symbol represents.  
A: The 'BSD' tag at Stair D on Sheet E-401 is a room/space label. For example, "Building Stair D".
47. Q: Division 26: Drawing E-401 – Indicates an oval symbol with a 'WM', please clarify this symbol.  
A: The 'WM' symbol on E-401 indicates "Water Main".
48. Q: Division 26: Drawing E-402 – Indicates a square symbol and circle with a 'B' inside the square outside Vestibule #100, please clarify this symbol.  
A: The "B: symbol outside the main entry on E-402 is a Public Adress Bell, see E-001.
49. Q: Division 26: Drawing E-402 – Indicates a square symbol with a 'DH' inside the square at both ends of East Corridor Room #114, please clarify this symbol.  
A: The 'DH' symbol on Doors 114A-114D is held open.
50. Q: Division 26: Drawing E-501 indicates a square box with 'PV', please clarify this symbol.  
A: The 'PV' symbol on E-501 indicates Photovoltaic.
51. Q: Drawing L-100 – Four (4) benches are indicated on the Calvert Street side on the drawing, yet there is no specification, please clarify.  
A: The four (4) benches are
52. Q: Specification section 015000, paragraph 1.7.A.2 indicates that the energy will be supplied, and paid for by the Owner, yet the last sentence states it is borne by the General Contractor, please advise.  
A: The energy referred to in spec section 015000-1.7.A.2 is to be by the Contractor. There is no current service to the site.
53. Q: Division 04: Specifications indicate, on page 5 paragraph 2.1.D.7 acoustical DMU: Sound Seal; Soundbox RSC/RF, yet it is unclear on the drawings where this condition occurs, please clarify.  
A: The acoustical block is located on the second floor of the Gym, see A304.
54. Q: Division 21 & 22: Drawing P-201 indicates that we are to connect to the existing 3" CW line and the 6" Fire Water Service line just after the control valve, yet on the walk through the control valves were not present. Are these control valves part of Phase 1?  
A: The control valves shown on P-201 are Phase 1 scope.
55. Q: Division 32: Drawing L100 indicates steel edging between Lawn Mix #1 and the Mulch Bed on the Harrison Ave. side of the building, please clarify type and size.  
A: The product size is 3/16"x4"x16" length, with interlocking joints. Steel stakes: 15" long (2 stakes at each joint) as manufactured by Sure-Loc Corporation, Holland, MI., or approved equal.

56. Q: Division 05: (Ref. Elevation E/A301, Section EC/A803 and Section 7/A803): The Terrace guardrail is noted as three different materials in the noted Elevation and Sections; stainless steel, powder-coated galvanized steel and painted galvanized steel. Please clarify the required material for this railing.  
A: The Terrace guardrail is to be powder coated galvanized steel.
57. Q: Division 07: (Ref. Specification 074646): The Fiber Cement specifications calls for two different Basis of Design; Rieder Oko Skin and a Nichiha Illumination Dimension Series, respectively. Are both the Reider and Nichiha systems required? If so, please advise where each system is required on the building.  
A: The Basis of Design for the Fiber Cement panels is Reider Oko Skin. Only one system is required.
58. Q: Division 08: (Ref. Section 3/A441): The coiling door at Pantry Room 206 calls for a coiling wood door, but there is no specification for a coiling wood door. Please provide a coiling wood door specification or advise if a coiling steel door is required.  
A: The coiling door at Pantry Room 206 is wood.
59. Q: Division 09: (Ref. Dwg A901) Wall partition types M, P, C, C1, C2, 2M, P, 2M, 1S, 1C, 2S, 2C, 2A are noted on the Partition Types but not shown on the floor plans. Please confirm these noted Partition Types are either not required, or advise where these are located on plan.  
A: Partition Types that are shown on the schedule but not shown on the plans are not required.
60. Q: Division 09: (Ref Dwgs A804 and A922): Various wall sections and wall details call out abuse board on A804 and A922 but there are no partition types labeled on the floor plan drawings that reflect this. Please advise where the ABR is required.  
A: The abuse resistant board is in the Gym.
61. Q: Division 07: The details regarding intumescent fireproofing within the Gymnasium are unclear. The specifications are along Column Line "A," but no other sections mention intumescent fireproofing. The notes state: "ROOF FRAMING PERPENDICULAR TO THE WALL TO BE 1HR RATED ENTIRE LENGTH. STEEL TO BE PAINTED WITH INTUMESCENT PAINT." and "ROOF FRAMING PARALLEL TO WALL TO BE 1HR RATED WITHIN 10' OF WALL. STEEL TO BE PAINTED WITH INTUMESCENT PAINT." Does this imply that the parallel beams along Column Line "A" and the perpendicular beams intersecting the beams along Column Line 'A' up to the first connection point, i.e., the Roof Truss, need to be treated with intumescent paint?  
A: The intumescent paint at the Gym roof structure is to be applied within 10 feet of Column Line A and includes the members on Column Line A. The intent of the note is not to change paint systems on any single member. The intumescent paint may exceed the 10' minimum from the A line.
62. Q: Spec section 08513 says the glazed folding doors are required to be thermally broken, but the glazed folding doors elevation is on the interior of the building. Please confirm that thermally broken construction & insulated glass are not required for the glazed folding doors.  
A: Glazed Folding Doors are not required to be thermally broken.

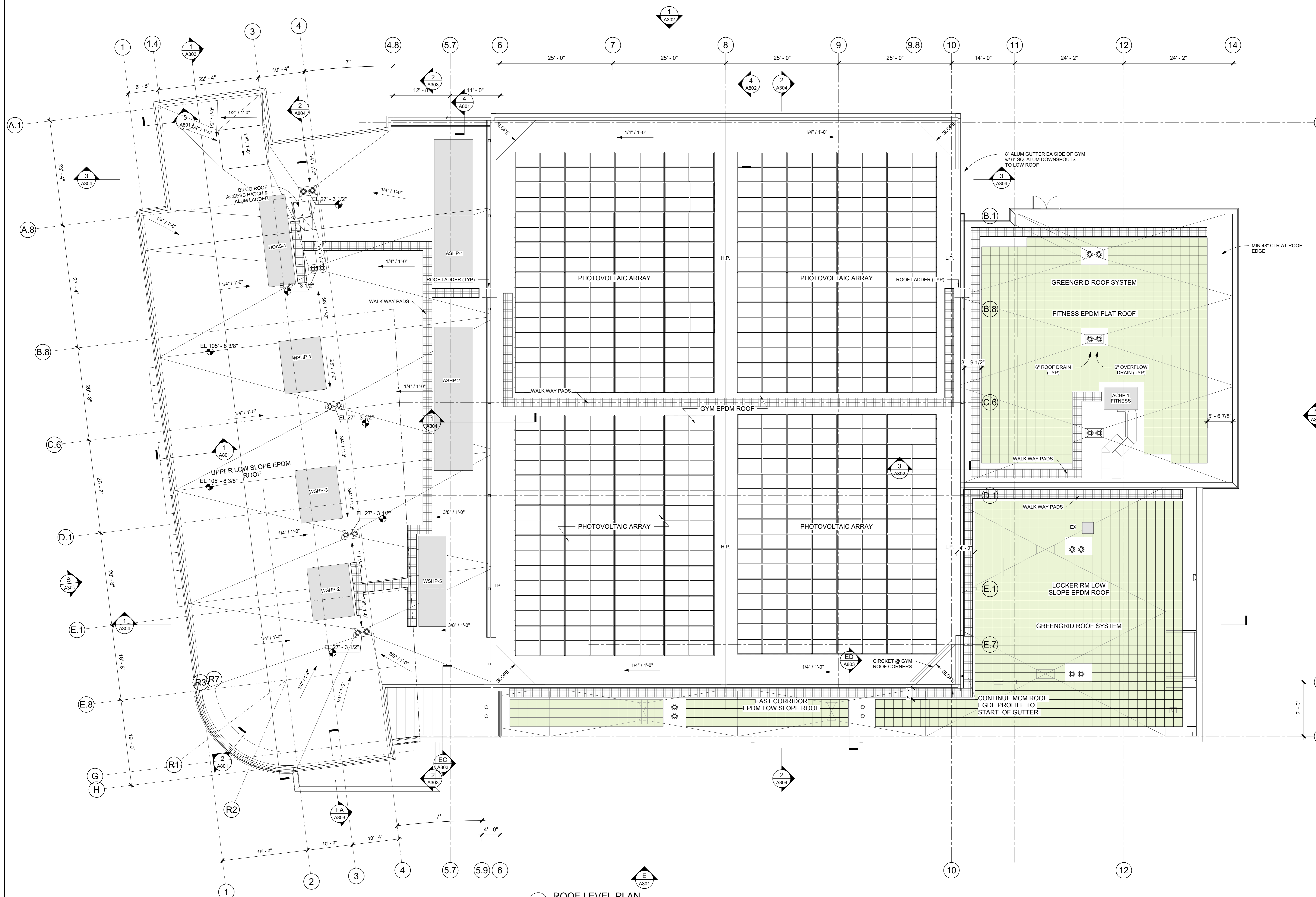


63. Q: Sheets A-912 & A-913 include a glazing legend. Both clear exterior glass types have the same key or indicator according to the glazing legend, so it is impossible to decipher which locations get the sg-4 school guard security glass & which locations get the standard IGU's. Is the intent for all first floor glazing to be the SG-4 school guard glass, with all other exterior glazing being the standard IGU's? Please clarify.  
A: SG-4 glazing to be provided at first floor entry locations only. All other glazing to be standard IGU.
64. Q: Spec section 084410 says that insulated spandrel panels within the curtain walls should be 1" thick aluminum faced insulated metal panels. The drawings & spec section 088000 say spandrel panels should be insulated glass with custom color ceramic frit. Please clarify which should be included.  
A: Spandrel panels in the curtain walls are to be glazed as shown on the elevations.
65. Q: Please clarify if low iron glass is required for any glass scope items on the project. Spec section 088000 mentions low iron glass but the drawings, including the glazing legend on A-912 & A-913, do not. Please clarify.  
A: Low Iron Glass is not required.

#### **Part 8 New Issues**

---

1. Phase 1 Civil Drawings C-400, C-401, C402, C-403 for reference only.



**1** ROOF LEVEL PLAN  
1/8" = 1'-0"

NOTE: ALL DESIGN, CONSTRUCTION AND PLANS INDICATED OR REPRESENTED BY THIS DRAWING ARE OWNED BY AND ARE THE PROPERTY OF KG+D ARCHITECTS, PC. NO PART OF THIS DRAWING SHALL BE REPRODUCED OR TRANSMITTED IN ANY FORM OR BY ANY MEANS, ELECTRONIC OR MECHANICAL, INCLUDING PHOTOCOPYING, RECORDING, OR BY ANY INFORMATION STORAGE AND RETRIEVAL SYSTEM, WITHOUT THE WRITTEN PERMISSION OF KG+D ARCHITECTS, PC.

UNLESS OTHERWISE SPECIFIED, ALL DIMENSIONS SHALL BE IN FEET AND INCHES. DIMENSIONS SHALL BE GIVEN TO THE CENTERLINE UNLESS OTHERWISE SPECIFIED. DIMENSIONS SHALL BE GIVEN TO THE FACE UNLESS OTHERWISE SPECIFIED. DIMENSIONS SHALL BE GIVEN TO THE CENTERLINE UNLESS OTHERWISE SPECIFIED. DIMENSIONS SHALL BE GIVEN TO THE FACE UNLESS OTHERWISE SPECIFIED.

ALTERATIONS BY ANY PERSON IN ANY WAY OF ANY ITEM CONTAINED ON THIS DOCUMENT UNLESS ACTING UNDER THE DIRECTION OF THE LICENSED ARCHITECT WHOSE PROFESSIONAL SEAL IS AFFIXED HERETO, IS A VIOLATION OF TITLE 16, SECTION 17-03 OF THE NEW YORK STATE LAW OF PROFESSIONAL ARCHITECTURE. ALL RIGHTS RESERVED.

Professional Seal

No.	Date	Issue
6	07/18/2024	BID ADDENDUM #4
4	06/05/2024	ISSUED FOR BID
3	01/16/2024	ISSUED FOR PERMIT
2	06/01/2020	DESIGN DEVELOPMENT
1	03/31/2020	50% DESIGN DEVELOPMENT

Sheet Title

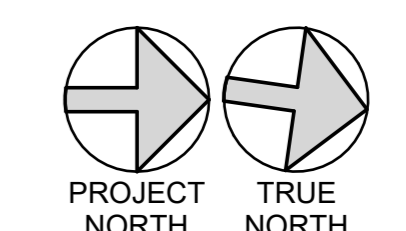
**ROOF LEVEL PLAN**

Job No.	Date
2020-1005	03/31/2020

Scale	Drawn / Checked
AS NOTED	- - -

Sheet Number

**A204**

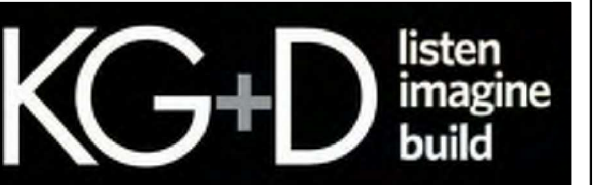


**HARRISON RECREATION & COMMUNITY CENTER**

New Construction - Phase 1

Town / Village of Harrison

270 Harrison Avenue  
Harrison, NY 10528

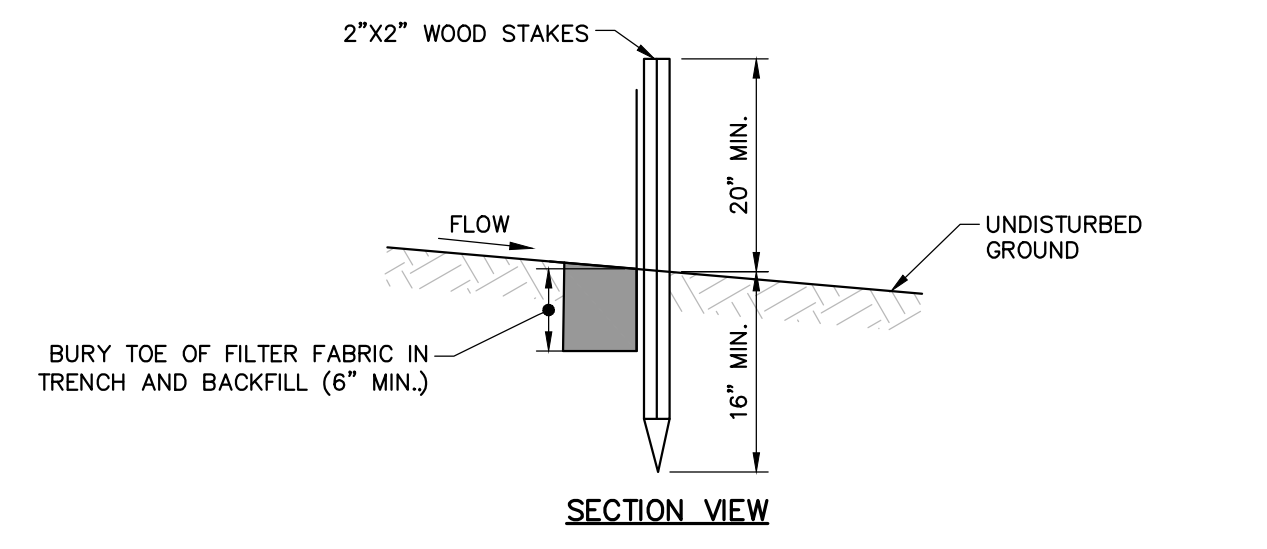


**KG+D ARCHITECTS, PC**  
285 MAIN STREET • MOUNT KISCO, NEW YORK 10549  
P-914.666.9900 KGDARCHITECTS.COM

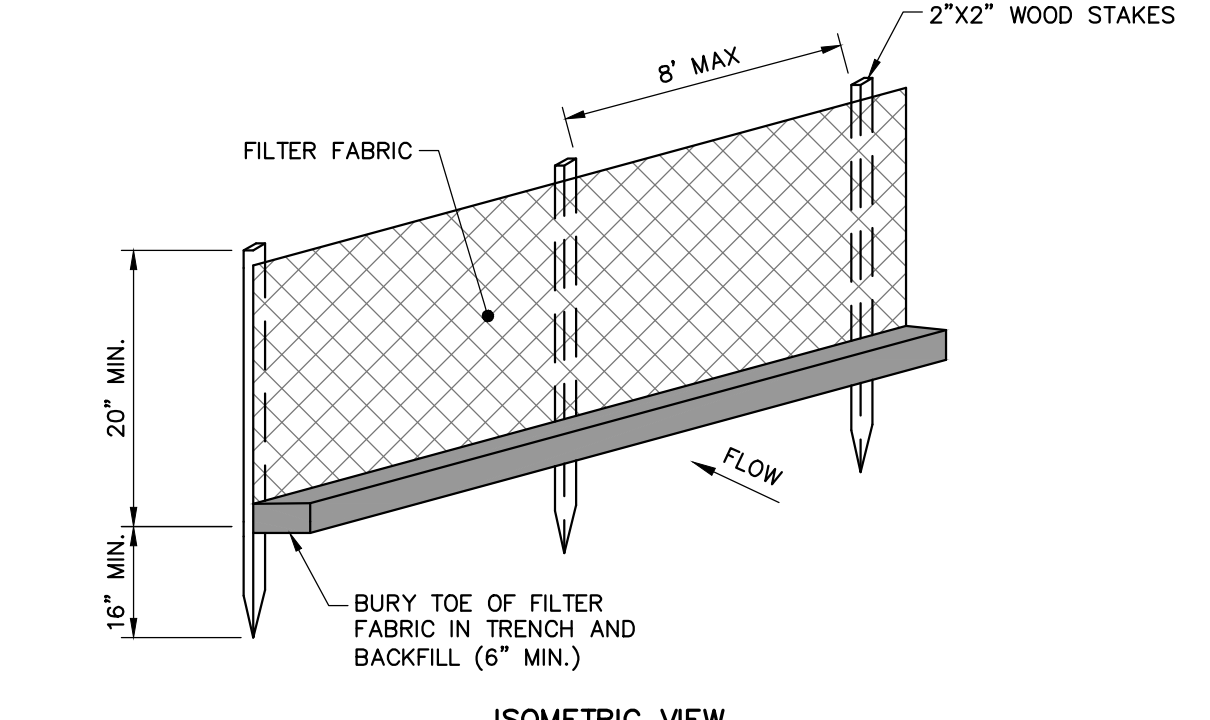


**Woodard & Curran**  
Woodard & Curran Engineering & Construction Services, Inc.  
100 Westchester Avenue, Suite 1007  
East Nyack, New York 10952  
914.887.4991 www.woodardcurran.com

**CONSTRUCTION DOCUMENTS**



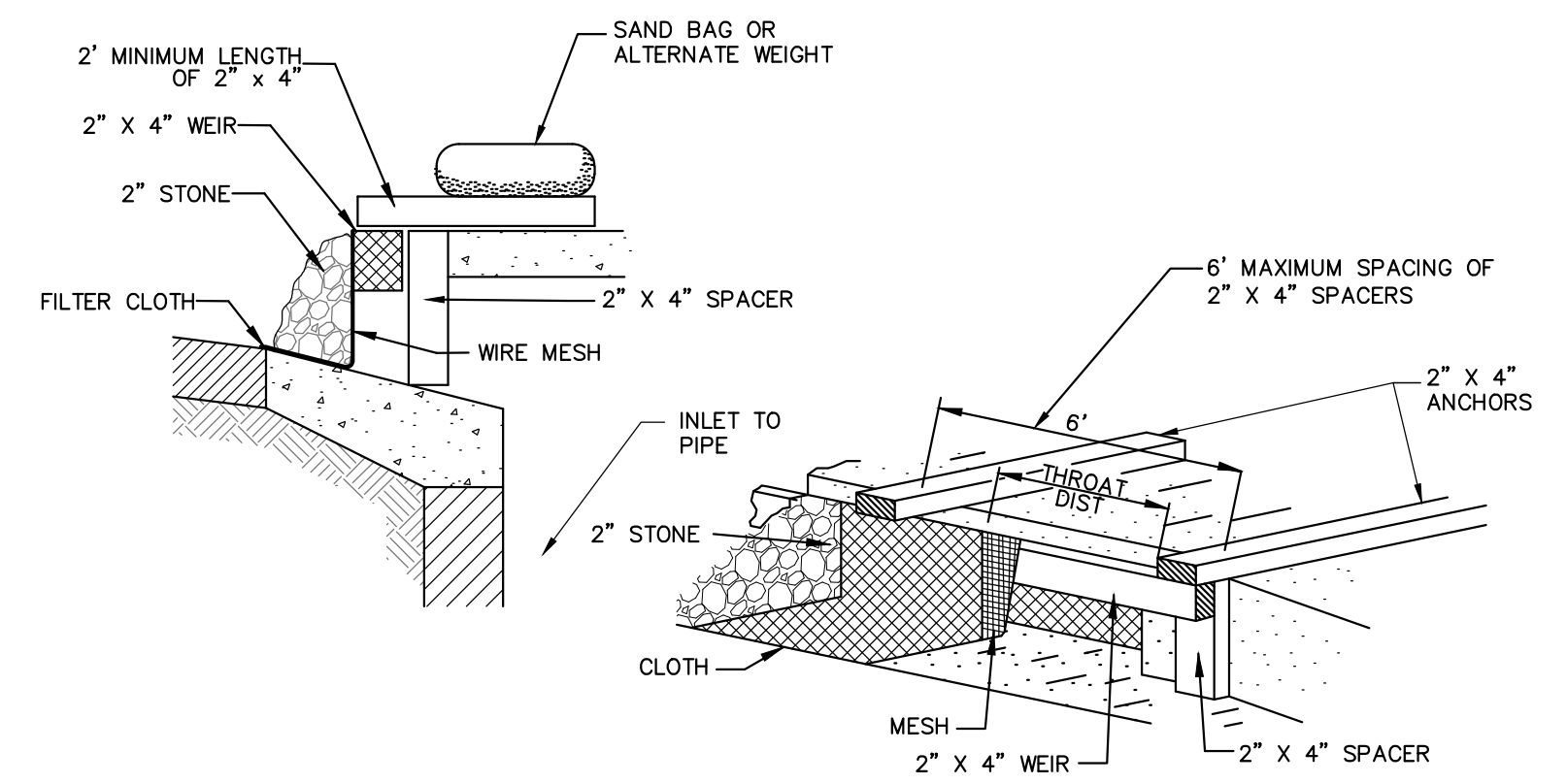
**SECTION VIEW**



**ISOMETRIC VIEW**

- NOTES:**
- INSTALL FABRIC ON UPHILL SIDE OF WOOD STAKES.
  - SPACING BETWEEN WOOD STAKES PER MANUFACTURER'S RECOMMENDATION.
  - SILT FENCE WILL NOT BE USED IN DRAINAGEWAYS.
  - MAINTENANCE: INSPECT FOR TEARS IN THE FABRIC OR DAMAGE TO SUPPORTS. REPAIR AS NECESSARY. REMOVE ACCUMULATED SEDIMENT WHEN IT REACHES A DEPTH OF SIX-INCHES OR MORE.
  - REMOVAL: WHEN UPSLOPE AREAS ARE STABILIZED, THE STRUCTURE AND ANY ACCUMULATED SEDIMENT WILL BE REMOVED.

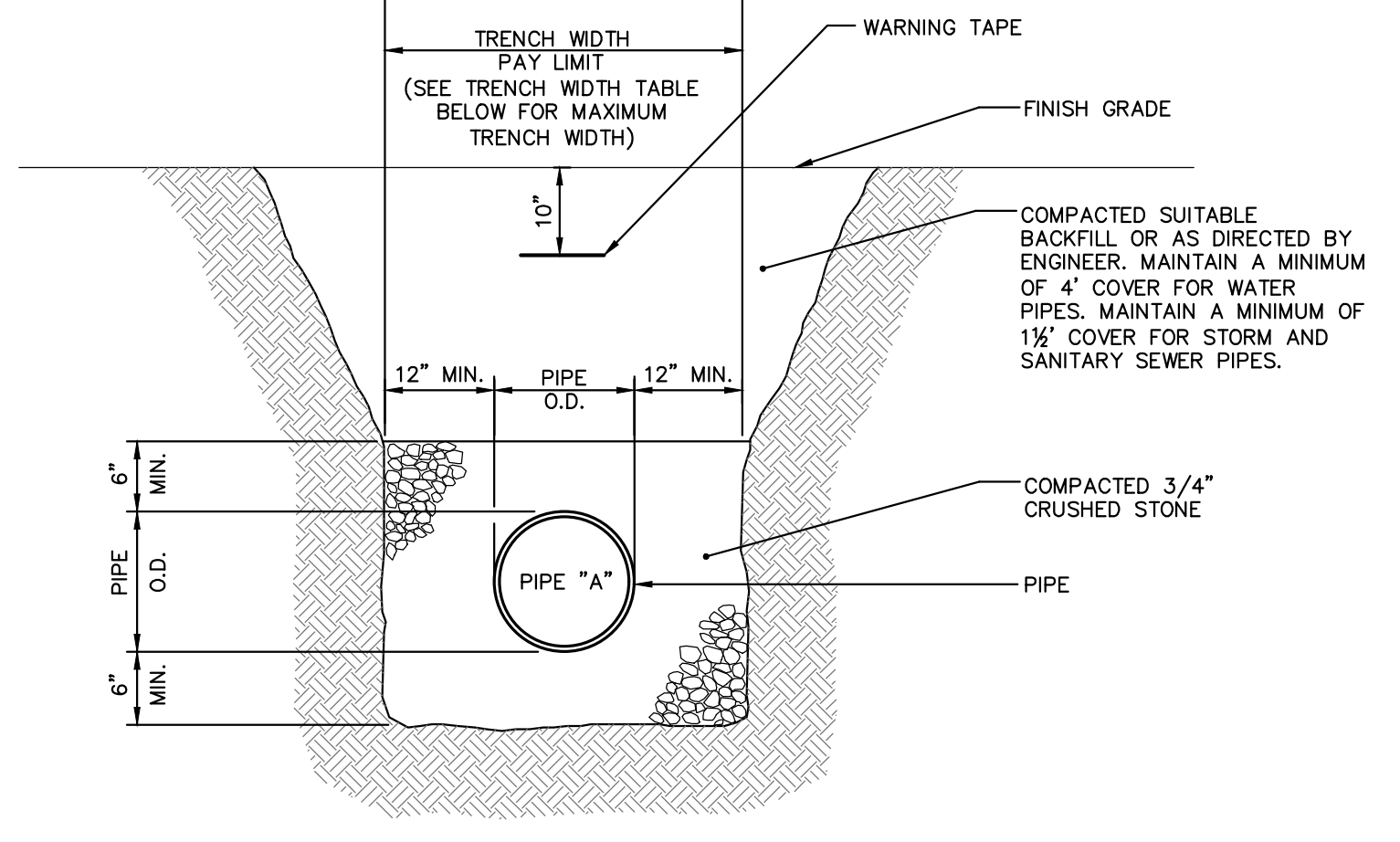
**4 SILT FENCE**  
NOT TO SCALE



**NOTES:**

- FILTER FABRIC SHALL HAVE AN AOS OF 40-85.
  - WOODEN FRAME SHALL BE CONSTRUCTED OF 2" X 4" CONSTRUCTION GRADE LUMBER.
  - WIRE MESH ACROSS THROAT SHALL BE A CONTINUOUS PIECE 30 INCH MINIMUM WIDTH WITH A LENGTH 4 FEET LONGER THAN THE THROAT. IT SHALL BE SHAPED AND SECURELY NAILED TO A 2" X 4" WEIR.
  - THE WEIR SHALL BE SECURELY NAILED TO 2" X 4" SPACERS 9 INCHES LONG SPACED NO MORE THAN 6 FEET APART.
  - THE ASSEMBLY SHALL BE PLACED AGAINST THE INLET AND SECURED BY 2" X 4" ANCHORS 2' LONG EXTENDING ACROSS THE TOP OF THE INLET AND HELD IN PLACE BY SANDBAGS OR ALTERNATE WEIGHTS.
- MAXIMUM DRAINAGE AREA 1 ACRE

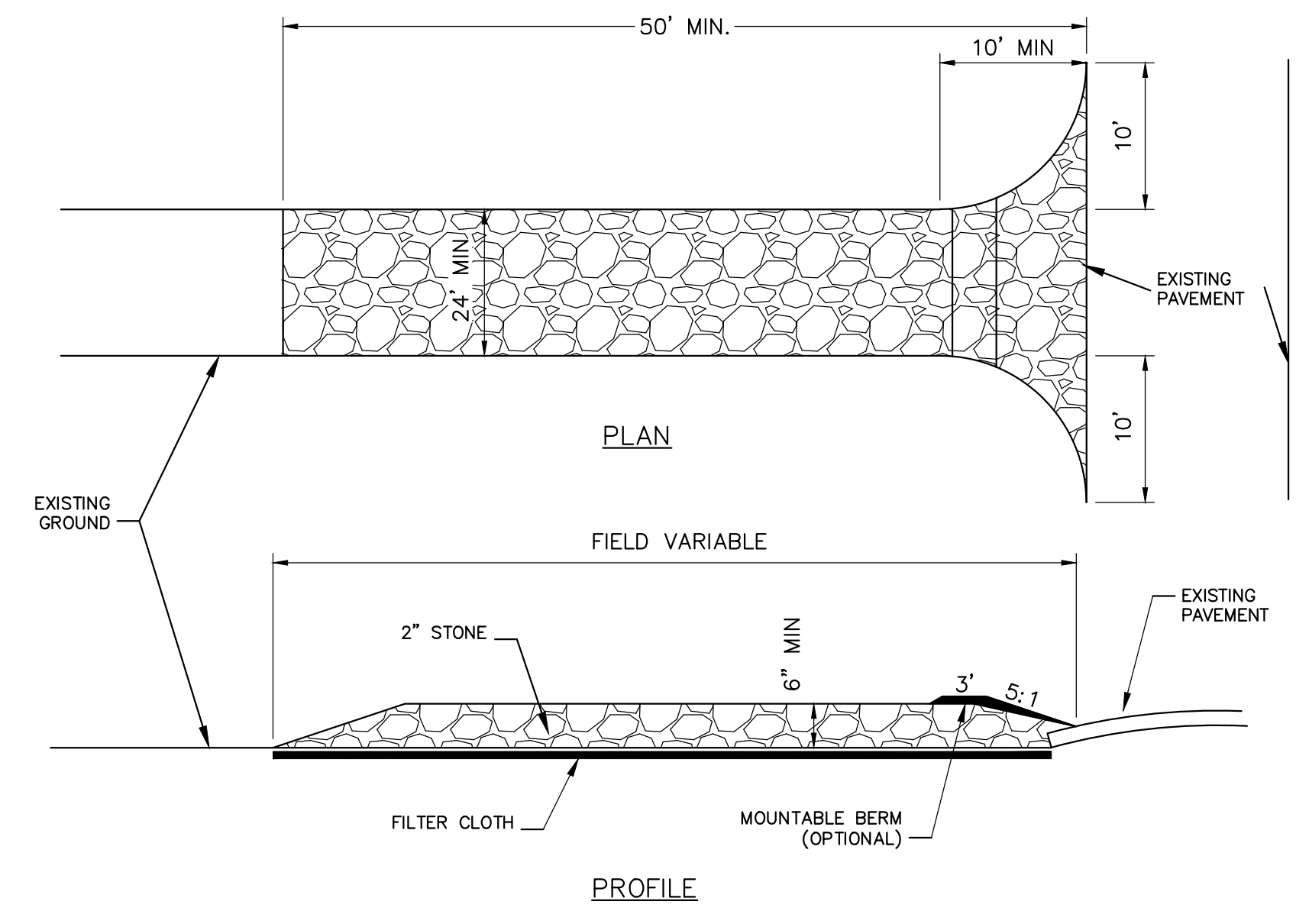
**3 CURB INLET PROTECTION**  
NOT TO SCALE



TRENCH WIDTHS (a)	
PIPE SIZE	MAX (ONE PIPE)(b)
15" OR LESS	4'-0"
18"	5'-0"
24"	5'-6"
30"	6'-0"
36"	6'-6"
42"	7'-0"
48"	7'-6"
MANHOLES	O.D. + 4'-0"

- NOTES:**
- MAINTAIN UNIFORM TRENCH WIDTH TO 6" OVER PIPE.
  - IF SHEETING IS REQUIRED TO REMAIN, CUT OFF TWO (2) FEET BELOW FINISH GRADE.
  - NO PAYMENT WILL BE MADE FOR SHEETING LEFT IN PLACE UNLESS DIRECTED BY ENGINEER.
  - IF GROUNDWATER IS ENCOUNTERED, WRAP STONE WITH MIRAFI 140N FILTER FABRIC OR APPROVED EQUAL.
  - SEE PAVEMENT REPAIR DETAILS FOR ROAD WORK AREAS.
  - PROVIDE 6" MIN. BEDDING FOR AREAS OF EXCAVATION IN ROCK.

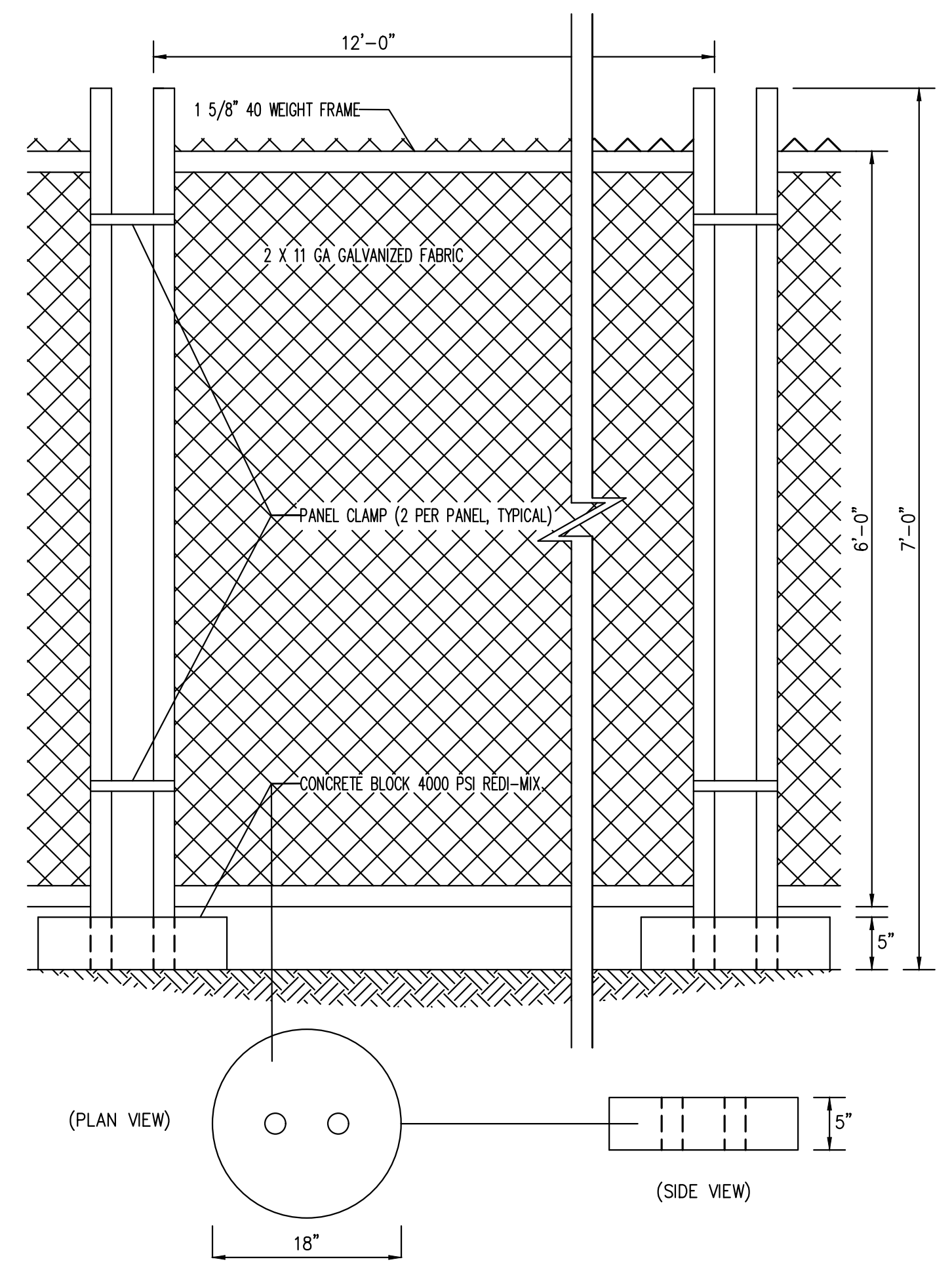
**7 TYPICAL PIPE TRENCH**  
NOT TO SCALE



**PROFILE**

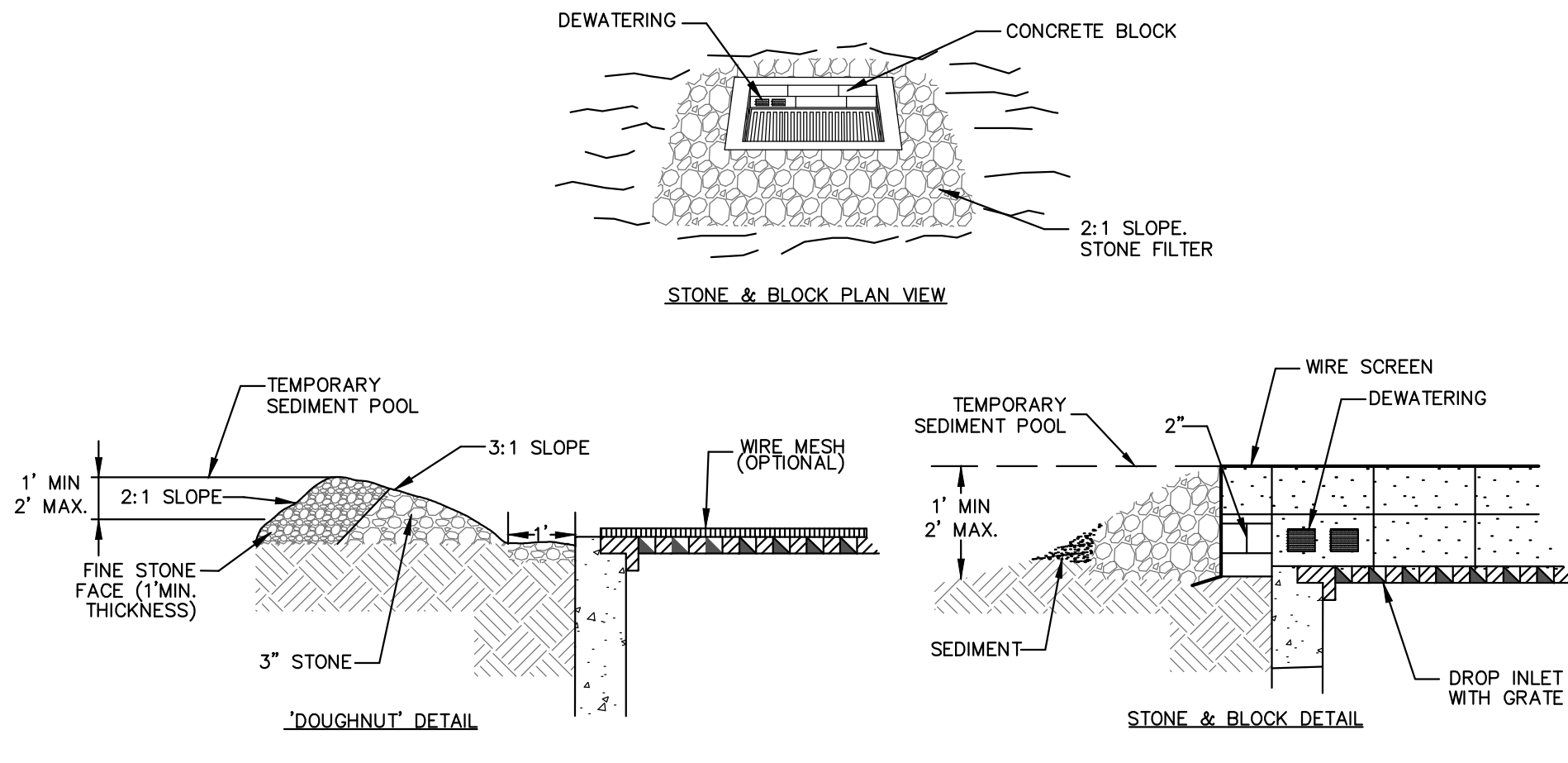
- CONSTRUCTION SPECIFICATIONS:**
- USE 2" DIAMETER STONE OR RECLAIMED/RECYCLED CONCRETE EQUIVALENT.
  - RECOMMENDED LENGTH GREATER THAN 50 FEET WHERE PRACTICAL.
  - THICKNESS NOT LESS THAN 6 INCHES.
  - 24 FOOT MINIMUM WIDTH, BUT NOT LESS THAN FULL WIDTH AT POINTS WHERE INGRESS AND EGRESS OCCUR. CONTRACTOR SHALL PROVIDE 24" WIDTH WHEREVER POSSIBLE (WITHOUT DISTURBING EXISTING STRUCTURES OR EXISTING TREES TO REMAIN).
  - FILTER CLOTH SHALL BE PLACED OVER THE ENTIRE AREA PRIOR TO PLACING OF STONE.
- CONSTRUCTION SPECIFICATIONS:**
- ALL SURFACE WATER FLOWING OR DIVERTED TOWARD CONSTRUCTION ENTRANCES SHALL BE PIPED ACROSS THE ENTRANCE. IF PIPING IS IMPRACTICAL, A MOUNTABLE BERM WILL BE PERMITTED.
  - ENTRANCE SHALL BE MAINTAINED IN A CONDITION THAT WILL PREVENT TRACKING OR FLOWING OF SEDIMENT ONTO PUBLIC RIGHTS-OF-WAY. THIS MAY REQUIRE PERIODIC TOP DRESSING WITH ADDITIONAL STONE AS CONDITIONS DEMAND, AND REPAIR AND/OR CLEANOUT OF ANY MEASURES USED TO TRAP SEDIMENT. ALL SEDIMENT SPILLED, DROPPED, WASHED, OR TRACKED ONTO PUBLIC RIGHTS-OF-WAY MUST BE REMOVED IMMEDIATELY.
  - PERIODIC INSPECTION AND REQUIRED MAINTENANCE SHALL BE PROVIDED BY THE CONTRACTOR.
  - REMOVE STABILIZED CONSTRUCTION ENTRANCE PRIOR TO PLACEMENT OF BITUMINOUS CONCRETE PAVEMENT.

**2 STABILIZED CONSTRUCTION ACCESS**  
NOT TO SCALE



- NOTES:**
- CONTRACTOR SHALL PROVIDE PERIODIC INSPECTION AND MAINTENANCE OF FENCE INCLUDING REPAIRS AS NECESSARY AND REQUIRED.
  - PROVIDE PRIVACY SCREEN WHERE SHOWN ON PLAN.

**6 TEMPORARY CHAIN LINK CONSTRUCTION FENCE**  
NOT TO SCALE

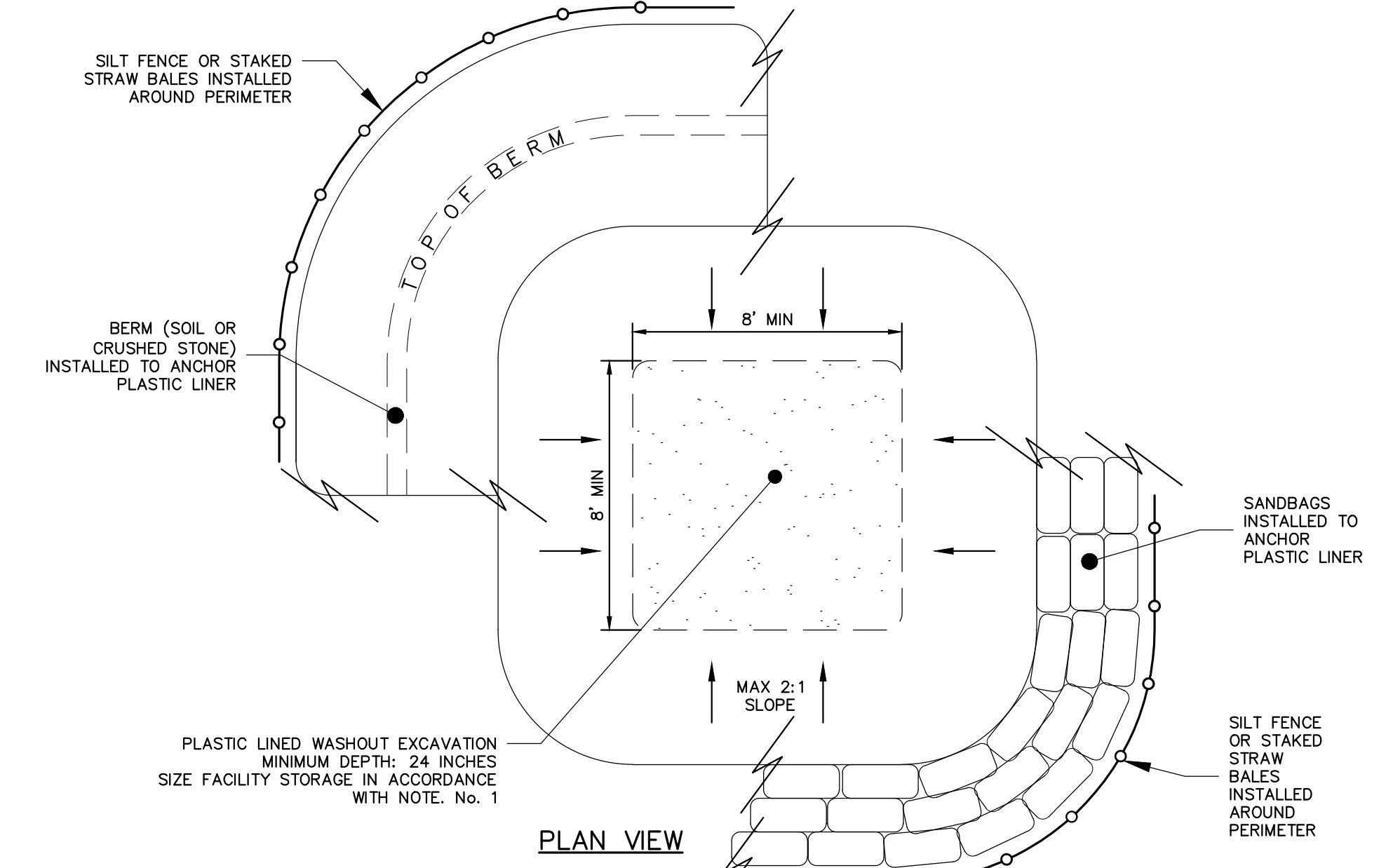


**STONE & BLOCK PLAN VIEW**

**STONE & BLOCK DETAIL**

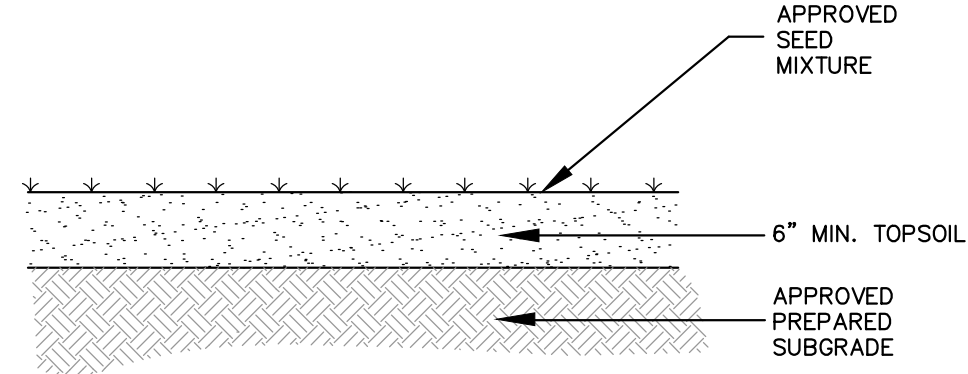
- NOTES:**
- LAY ONE BLOCK ON EACH SIDE OF THE STRUCTURE ON ITS SIDE FOR DEWATERING. FOUNDATION SHALL BE 2 INCHES MINIMUM BELOW REST OF INLET AND BLOCKS SHALL BE PLACED AGAINST INLET FOR SUPPORT.
  - HARDWARE CLOTH OR 1/2" WIRE MESH SHALL BE PLACED OVER BLOCK OPENINGS TO SUPPORT STONE.
  - USE CLEAN STONE OR GRAVEL 1/2 TO 3/4 INCH IN DIAMETER PLACED 2 INCHES BELOW TOP OF THE BLOCK ON A 2:1 SLOPE OR FLATTER.
  - FOR STONE STRUCTURES ONLY: A 1 FOOT THICK LAYER OF THE FILTER STONE WILL BE PLACED AGAINST THE 3 INCH STONE AS SHOWN ON THE DRAWINGS.
- MAXIMUM DRAINAGE AREA 1 ACRE

**1 STONE AND BLOCK DROP INLET PROTECTION**  
NOT TO SCALE



- NOTES:**
- SIZE WASHOUT FACILITY TO PROVIDE REQUIRED CAPACITY TO ALLOW FOR PLANNED CONCRETE POUR ACTIVITIES BETWEEN FACILITY MAINTENANCE AS DESCRIBED IN NOTE 9. THE FOLLOWING RELATIONSHIPS CAN BE USED TO ESTIMATE REQUIRED CAPACITY. MINIMUM FACILITY DIMENSIONS SHALL BE CONSTRUCTED AS NOTED ON DETAIL.
  - CONCRETE WASHOUT FACILITY SHALL BE CONSTRUCTED, INSPECTED AND MAINTAINED IN ACCORDANCE WITH THE NYSDEC NEW YORK STANDARDS & SPECIFICATIONS FOR EROSION AND SEDIMENT CONTROL, LATEST EDITION.
  - LOCATE WASHOUT FACILITY MINIMUM OF 100 FEET AWAY FROM DRAINAGE SWALES, STORM DRAIN INLETS, WETLANDS, STREAMS AND OTHER SURFACE WATERS.
  - WASHOUT FACILITY SHALL BE LINED WITH MINIMUM 10 MIL THICKNESS PLASTIC SHEETING OR EQUIVALENT WATER TIGHT BARRIER APPROVED BY THE ENGINEER.
  - LINER SHALL BE MAINTAINED FREE OF TEARS AND PUNCTURES AT ALL TIMES.
  - ANCHOR LINER AT TOP OF EXCAVATION WITH EARTHEN BERM, SANDBAGS OR STONE AS SHOWN ON THE DETAIL.
  - SURROUND WASHOUT FACILITY WITH SILT FENCE OR STAKED STRAW BALES.
  - ALL WASHOUT FACILITIES SHALL BE INSPECTED DAILY.
  - ACCUMULATED HARDENED MATERIAL SHALL BE REMOVED WHEN 75 PERCENT OF THE STORAGE CAPACITY OF THE STRUCTURE IS FILLED. ANY EXCESS WASH WATER SHALL BE PUMPED INTO AN ACCEPTABLE CONTAINMENT VESSEL AND DISPOSED OFFSITE IN ACCORDANCE WITH LOCAL REGULATIONS.
  - PLASTIC LINER SHALL BE REPLACED WITH REMOVAL OF ACCUMULATED HARDENED MATERIAL.
  - LOCATION TO BE APPROVED BY ENGINEER.

**5 CONCRETE WASHOUT AREA**  
NOT TO SCALE



**9 LAWN RESTORATION**  
NOT TO SCALE

NOTE: ALL DESIGN, DESIGN ARRANGEMENTS AND PLANS INDICATED OR REPRESENTED BY THIS DRAWING ARE OWNED BY AND ARE THE PROPERTY OF KG+D ARCHITECTS, PC AND ARE TO BE USED ONLY FOR THE PROJECT, NONE OF WHICH KEYS, DESIGN ARRANGEMENTS OR PLANS SHALL BE REPRODUCED OR DISCLOSED TO ANY PARTY WHATSOEVER WITHOUT THE WRITTEN PERMISSION OF KG+D.

WRITTEN PERMISSION ON THE DRAWING SHALL HAVE PRECEDENCE OVER SCALED DIMENSIONS. CONTRACTOR SHALL VERIFY ALL ACTUAL DIMENSIONS AND CONDITIONS ON THE JOB AND THE ARCHITECT MUST BE NOTIFIED OF ANY DISCREPANCIES FROM DRAWINGS AND CONDITIONS SHOWN. SHOP DETAILS MUST BE SUBMITTED TO THE OFFICE FOR APPROVAL BEFORE PROCEEDING WITH FABRICATION.

ALTERATIONS BY ANY PERSON IN ANY WAY OF ANY ITEM CONTAINED ON THIS DOCUMENT UNLESS ACTING UNDER THE DIRECTION OF THE LICENSED ARCHITECT WHOSE PROFESSIONAL SEAL IS AFFIXED HERETO, IS A VIOLATION OF TITLE 16, SECTION 1603-B OF NEW YORK STATE LAW.

© COPYRIGHT KG+D ARCHITECTS, PC. ALL RIGHTS RESERVED.

No.	Date	Issue
4	07/12/2023	ISSUE FOR BID - PHASE 1
3	06/09/2023	ISSUE FOR PERMIT - PHASE 1
2	06/01/2020	DESIGN DEVELOPMENT
1	03/31/2020	50% DESIGN DEVELOPMENT

**CONSTRUCTION DETAILS**

Job No.	2020-1005	Date	06/29/2023
Scale	AS NOTED	Drawn / Checked	CJL/JLMT
Sheet Number			

**HARRISON RECREATION & COMMUNITY CENTER**

New Construction - Phase 1

Town / Village of Harrison

270 Harrison Avenue  
Harrison, NY 10528



**KG+D ARCHITECTS, PC**

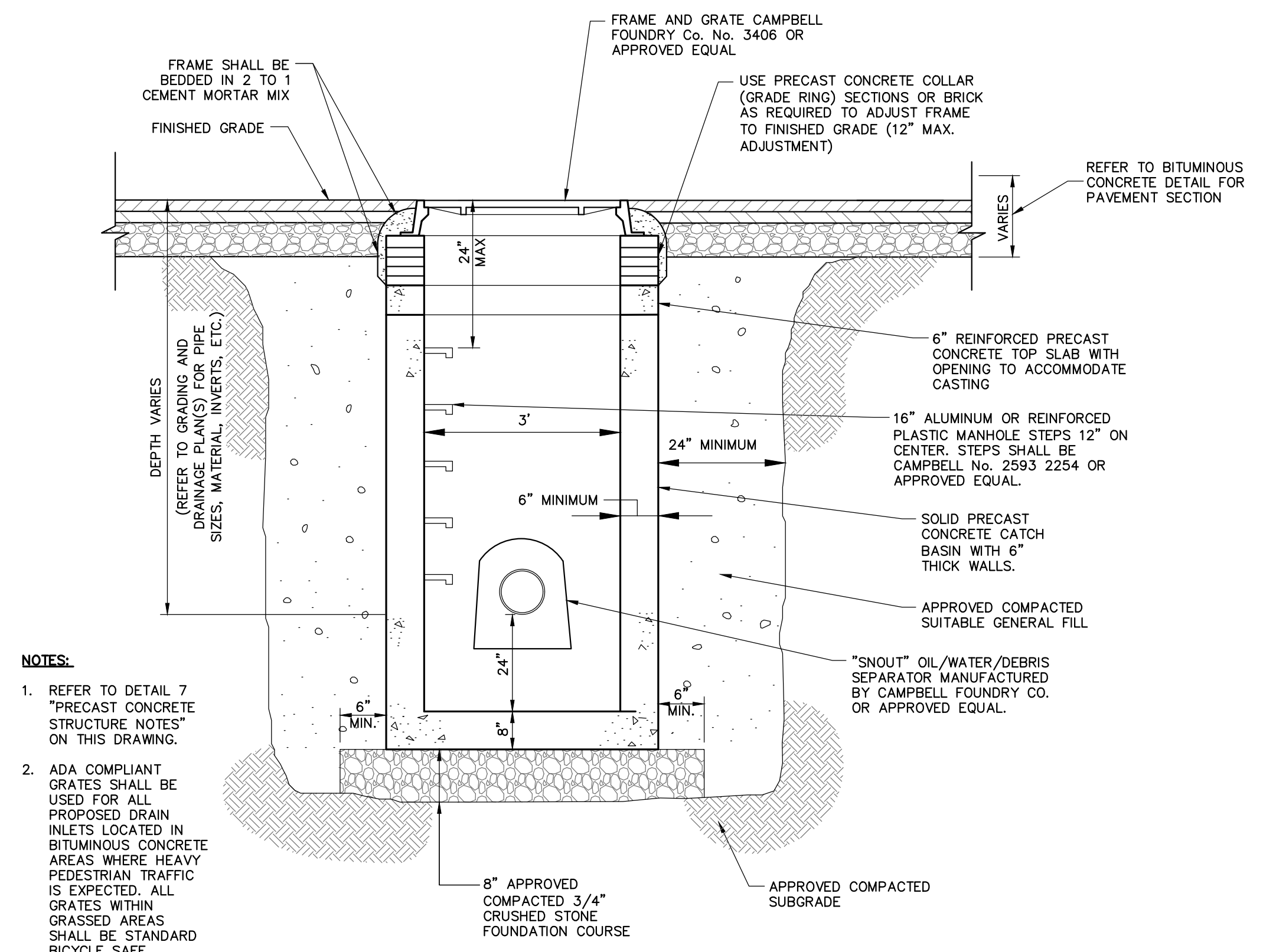
285 MAIN STREET - MOUNT KISCO, NEW YORK 10549  
P-914.666.9900 KGDARCHITECTS.COM



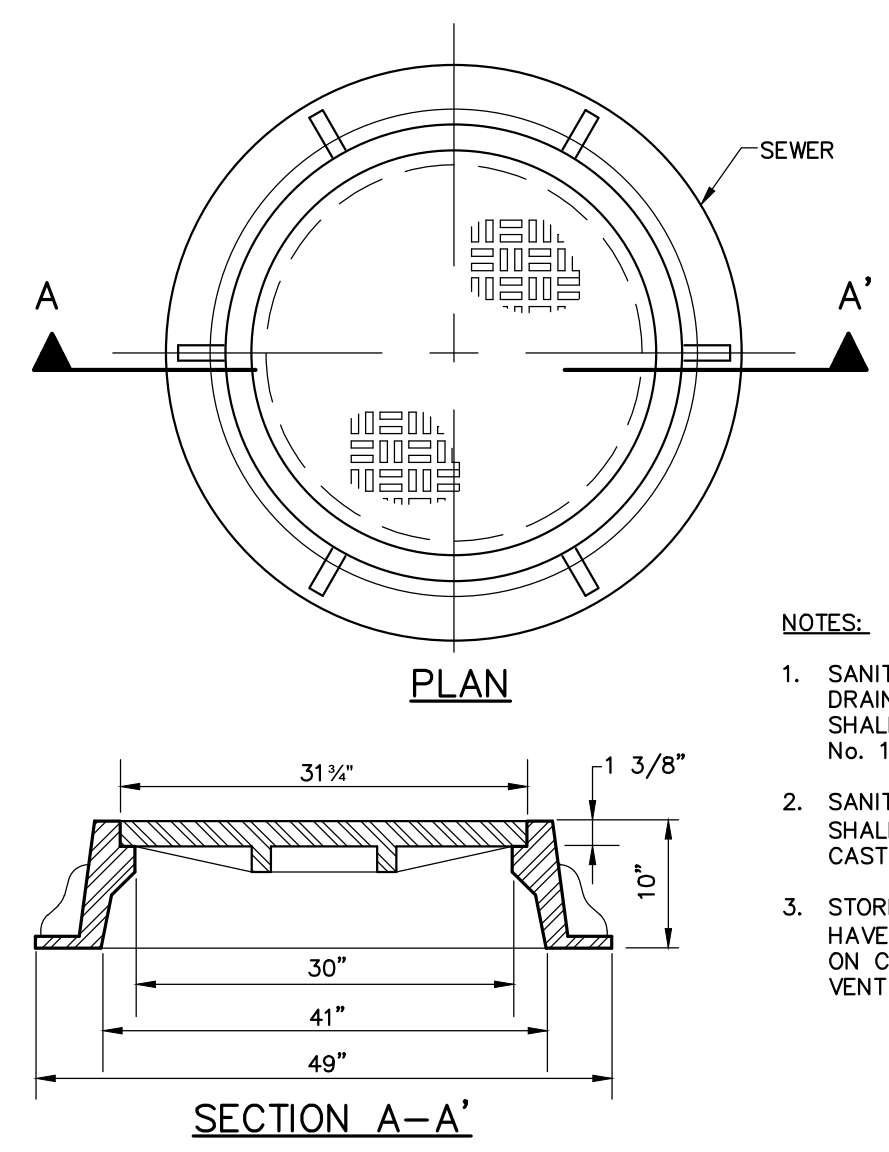
**Woodard & Curran**

Woodard & Curran Engineering & Construction Services, Inc.  
800 Westchester Avenue, Suite 1007  
East Nyack, New York 10924  
914.887.4581 www.woodardcurran.com

CONSTRUCTION DOCUMENTS

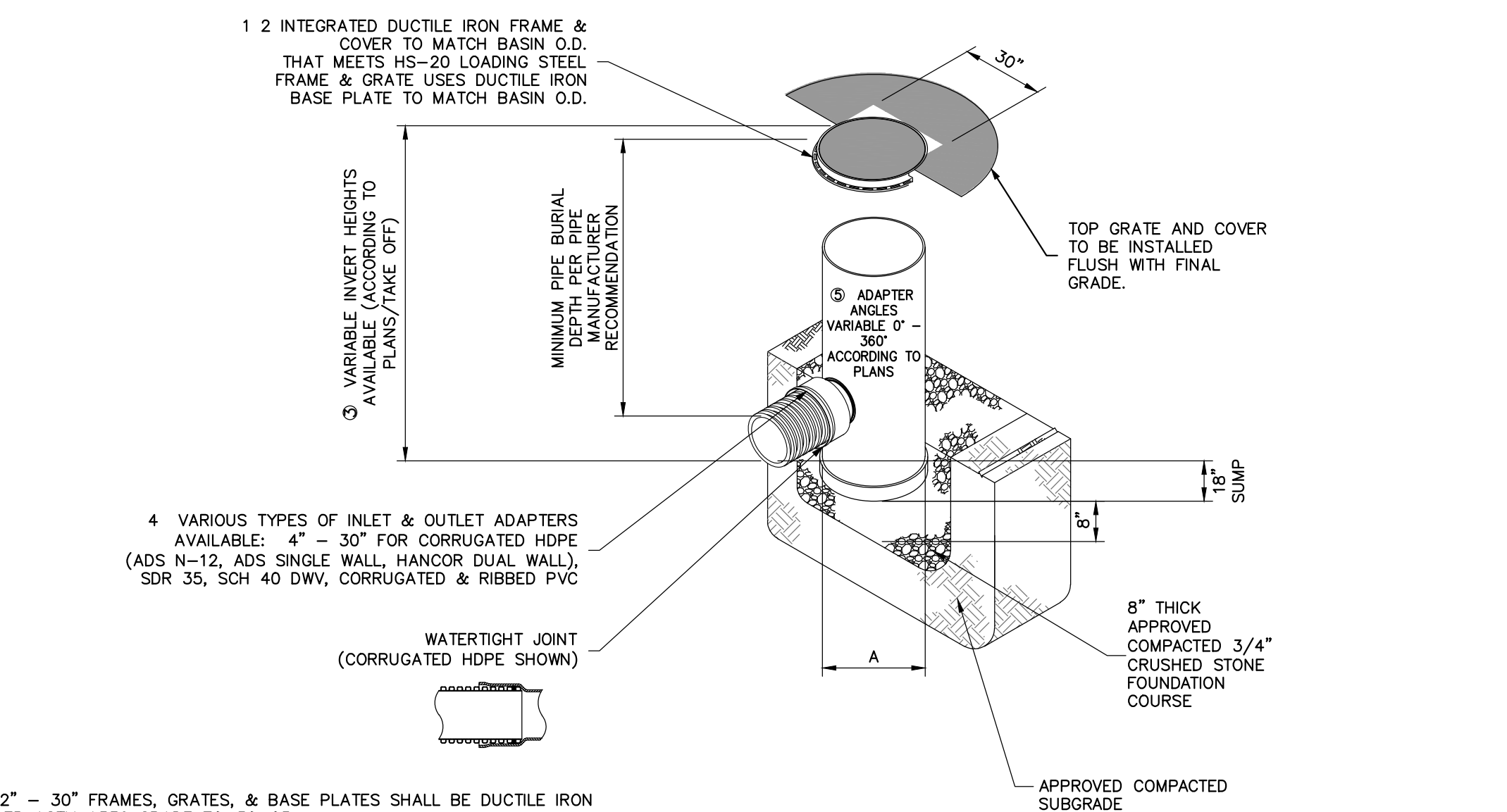


**1 DRAIN INLET (CATCH BASIN)**  
C-401 NOT TO SCALE



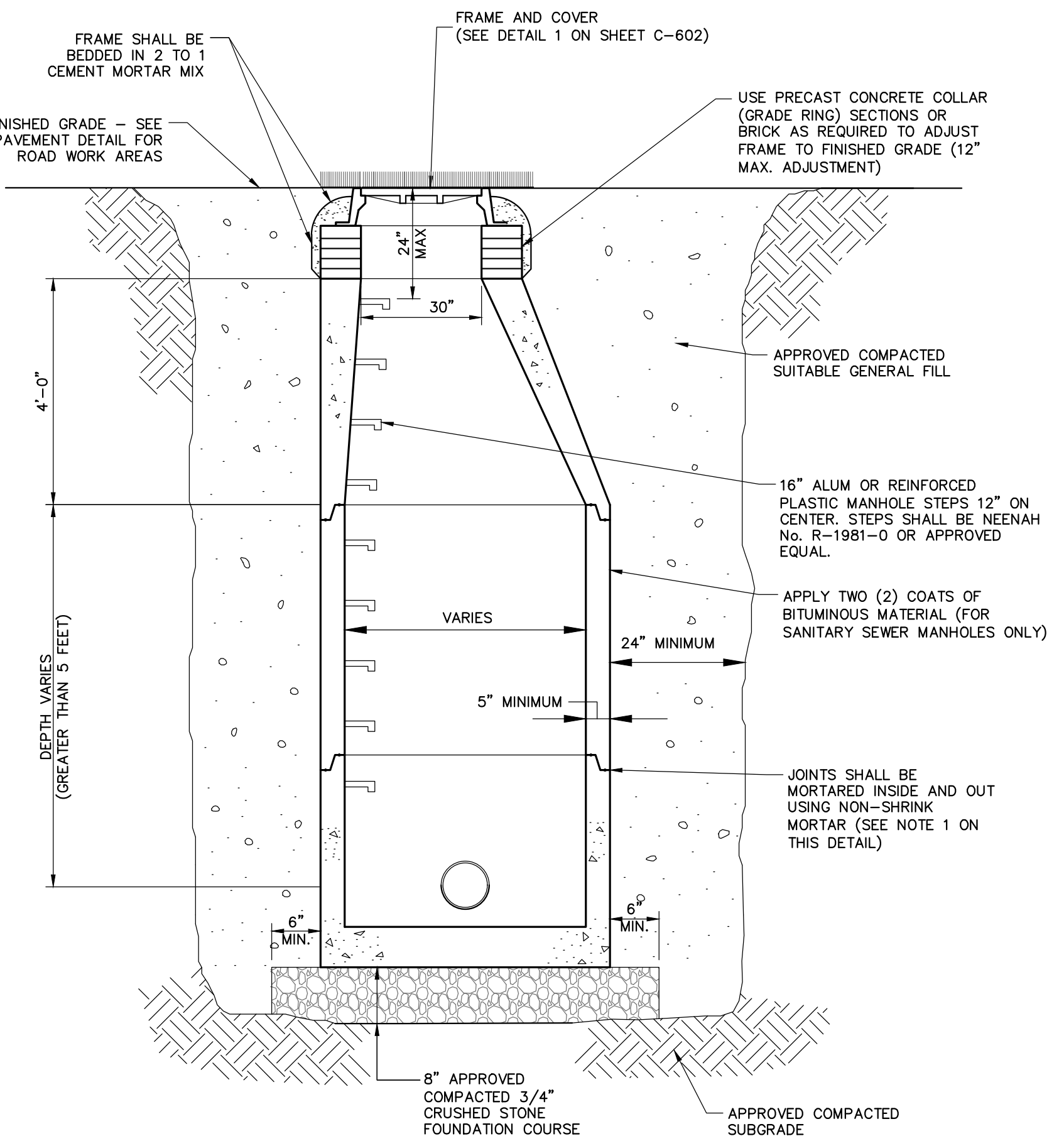
**2 MANHOLE FRAME & COVER**  
C-401 NOT TO SCALE

- NOTES:**
- SANITARY SEWER AND STORM DRAIN MANHOLE FRAMES COVERS SHALL BE CAMPBELL FOUNDRY No. 1008 OR APPROVED EQUAL.
  - SANITARY SEWER MANHOLES SHALL HAVE THE WORD 'SEWER' CAST ON COVER. COVER SHALL HAVE VENT HOLES.
  - STORM SEWER MANHOLES SHALL HAVE THE WORD 'DRAIN' CAST ON COVER. COVER SHALL HAVE VENT HOLES.



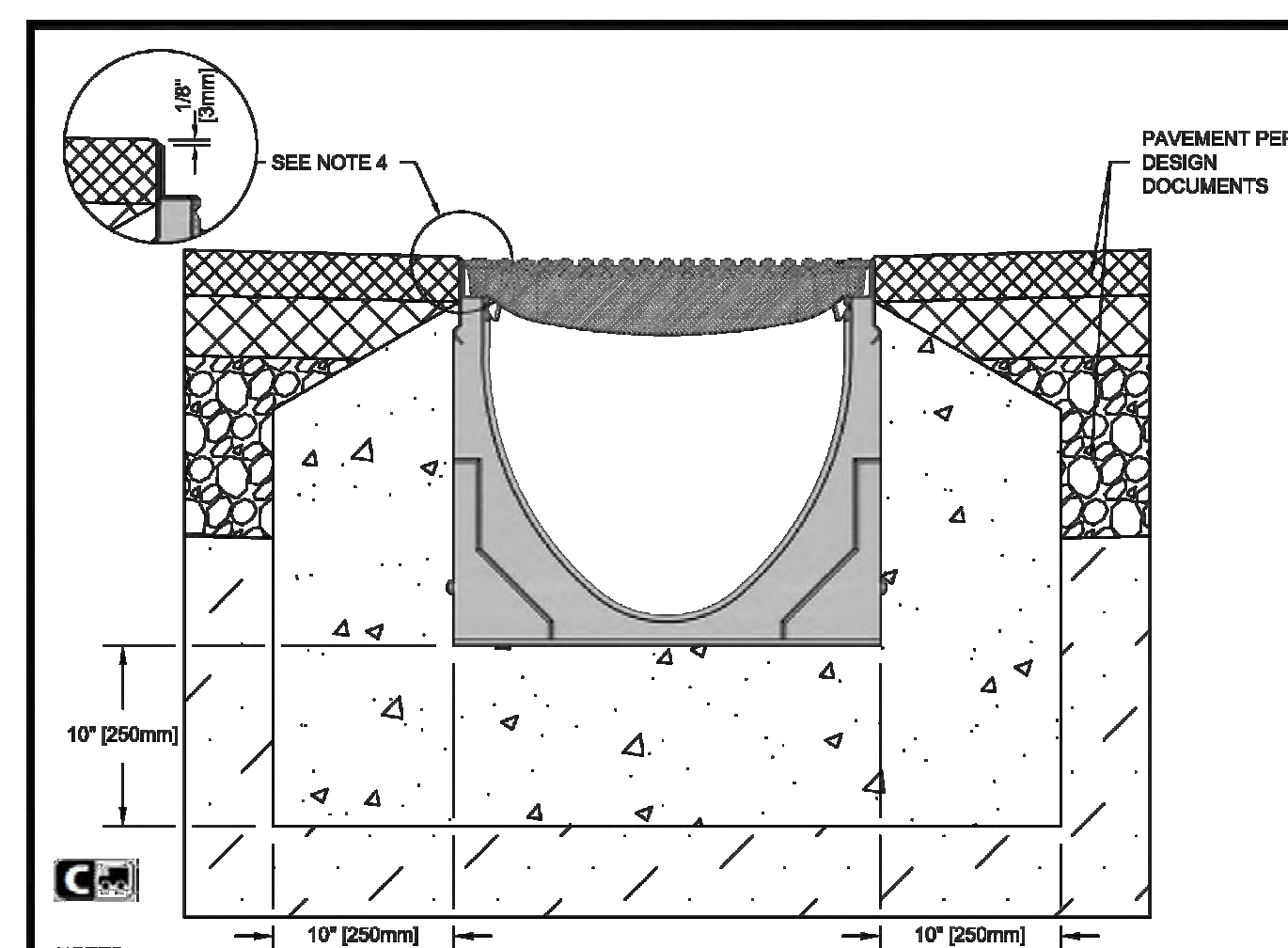
**5 AREA DRAIN**  
C-401 NOT TO SCALE

- NOTES:**
- 12" - 30" FRAMES, GRATES, & BASE PLATES SHALL BE DUCTILE IRON PER ASTM A536 GRADE 70-50-05.
  - 12" - 30" FRAMES & GRATES SHALL BE STEEL PER ASTM A36.
  - DRAIN BASIN TO BE CUSTOM MANUFACTURED ACCORDING TO PLAN DETAILS.
  - DRAINAGE CONNECTION STUB JOINT TIGHTNESS SHALL CONFORM TO ASTM D3212 FOR CORRUGATED HDPE (ADS & HANCOR DUAL WALL) & SDR 35 PVC.
  - ADAPTERS CAN BE MOUNTED ON ANY ANGLE 0° TO 360° TO DETERMINE MINIMUM ANGLE BETWEEN ADAPTERS SEE DRAWING NO. 7001-110-012, 7001-110-013, & 7001-110-014.
  - ALL OPTIONS SHALL MEET HS-20 LOAD RATING.



**11 TRENCH DRAIN**  
C-401 SCALE: N.T.S.

- NOTES:**
- THE WIDTH OF THE MANHOLE WILL BE A MINIMUM OF 4' EXCEPT WHERE A NEW MANHOLE WITH A DROP CONNECTION IS SHOWN. THEN THE MINIMUM WIDTH OF THE MANHOLE IS 5'.
  - PRECAST CONCRETE STRUCTURES AND CASTINGS SHALL BE SUITABLE FOR HS-20 LOADINGS.
  - PRECAST CONCRETE STRUCTURES SHALL BE MANUFACTURED IN ACCORDANCE WITH ASTM C-478.
  - ALTERNATE TOP SLAB MAY BE USED AS DICTATED BY DESIGN AND/OR FIELD CONDITIONS.
  - MANHOLE FRAME AND GRATE(S) SHALL MEET MUNICIPAL AND STATE SPECIFICATIONS WHEN APPLICABLE.
  - REFER TO PROJECT SPECIFICATIONS FOR MORE DRAINAGE MANHOLE INFORMATION.
  - JOINT SEALANT BETWEEN SECTIONS SHALL BE BUTYL RUBBER.
  - PROVIDE ANTI-FLOTATION SLAB EXTENSION AS REQUIRED TO SATISFY ANTI-FLOTATION REQUIREMENTS.



**SPECIFICATION CLAUSE**

**K300 KLASSIKDRAIN™ DRAINLOK™ LOAD CLASS C**

GENERAL: THE SURFACE DRAINAGE SYSTEM SHALL BE POLYMER CONCRETE K300 CHANNEL SYSTEM WITH GALVANIZED STEEL EDGE RAILS AS MANUFACTURED BY ACO POLYMER PRODUCTS, INC.

MATERIALS SHALL BE MANUFACTURED FROM POLYESTER RESIN POLYMER CONCRETE WITH AN INTEGRALLY CAST GALVANIZED STEEL EDGE RAIL. MINIMUM PROPERTIES OF POLYMER CONCRETE WILL BE AS FOLLOWS:

COMPRESSIVE STRENGTH:	14,000 PSI
FLEXURAL STRENGTH:	4,000 PSI
TENSILE STRENGTH:	1,500 PSI
WATER ABSORPTION:	0.07%
FROST PROOF:	YES
DILUTE ACID AND ALKALI RESISTANT:	YES
9117 SALT SPRAY TEST COMPLIANT:	YES

THE SYSTEM SHALL BE 12" (300mm) NOMINAL INTERNAL WIDTH WITH A 14.2" (360mm) OVERALL WIDTH AND A BUILT-IN SLOPE OF 0.5%. CHANNEL INVERT SHALL HAVE DEVELOPED "M" SHAPE. ALL CHANNELS SHALL BE INTERLOCKING WITH A MALE/FEMALE JOINT.

THE COMPLETE DRAINAGE SYSTEM SHALL BE BY ACO POLYMER PRODUCTS, INC. ANY DEVIATION OR PARTIAL SYSTEM DESIGN AND/OR IMPROPER INSTALLATION WILL VOID ANY AND ALL WARRANTIES PROVIDED BY ACO POLYMER PRODUCTS, INC.

**NOTES:**

- IT IS NECESSARY TO ENSURE MINIMUM DIMENSIONS SHOWN ARE SUITABLE FOR EXISTING GROUND CONDITIONS. ENGINEERING ADVICE MAY BE REQUIRED.
- MINIMUM CONCRETE STRENGTH OF 4,000 PSI IS RECOMMENDED. CONCRETE SHOULD BE VIBRATED TO ELIMINATE AIR POCKETS.
- EXPANSION AND CONTRACTION CONTROL JOINTS AND REINFORCEMENT ARE RECOMMENDED TO PROTECT CHANNEL AND CONCRETE SURROUND. ENGINEERING ADVICE MAY BE REQUIRED.
- THE FINISHED LEVEL OF THE CONCRETE SURROUND MUST BE APPROX. 1/8" (3mm) ABOVE THE TOP OF THE CHANNEL EDGE.
- CONCRETE BASE THICKNESS SHOULD MATCH SLAB THICKNESS. ENGINEERING ADVICE MAY BE REQUIRED TO DETERMINE PROPER LOAD CLASS.
- REFER TO ACO'S LATEST INSTALLATION INSTRUCTIONS FOR FURTHER DETAILS.

**K300 - KLASSIKDRAIN - LOAD CLASS: C**  
Haunched Asphalt Pavement

**INSTALLATION DRAWING - ACO DRAIN**

ACO Polymer Products, Inc.  
825 W. Beachfront Dr.  
Casa Grande, AZ 85122  
Tel: 520-421-6888  
Fax: 520-421-6888

9470 Phoenix Dr.  
Merritt, OH 44860  
Tel: 440-639-7200  
Fax: 440-639-7235

4211 Pleasant Rd.  
Port Hill, DC 20708  
Tel: 464-639-7200  
Fax: 803-402-0083

Arizona Tel: 888-490-9552 e-mail: sales@acousa.com Ohio Tel: 800-543-4764 www.acousa.com South Carolina Tel: 800-543-4764

**8 TYPICAL WATER SERVICE CONNECTION**  
C-401 SCALE: N.T.S.

**9 TYPICAL SEWER SERVICE CONNECTION**  
C-401 SCALE: N.T.S.

**10 DRAINAGE MANHOLE**  
C-401 NOT TO SCALE

NOTE: ALL DESIGN, DIMENSIONS AND PLANS INDICATED OR REPRESENTED BY THIS DRAWING ARE OWNED BY AND ARE THE PROPERTY OF ACO AND ARE NOT TO BE REPRODUCED OR USED FOR ANY OTHER PROJECT WITHOUT THE WRITTEN PERMISSION OF ACO.

WRITTEN PERMISSION ON THIS DRAWING SHALL HAVE PRECEDENCE OVER SCALED DIMENSIONS. CONTRACTOR SHALL VERIFY ALL ACTUAL DIMENSIONS AND CONDITIONS ON THE JOB AND THE ARCHITECT MUST BE NOTIFIED OF ANY VARIATIONS FROM DIMENSIONS AND CONDITIONS SHOWN. EACH DETAIL MUST BE SUBMITTED TO THE OFFICE FOR APPROVAL BEFORE PROCEEDING WITH CONSTRUCTION.

ALTERNATIONS BY ANY PERSON IN ANY WAY OF ANY ITEM CONTAINED ON THIS DOCUMENT UNLESS ACTING UNDER THE DIRECTION OF THE LICENSED ARCHITECT OR ENGINEER SHALL BE AT THE USER'S SOLE RISK AND AT THE USER'S SOLE RESPONSIBILITY. NO PART OF THIS DOCUMENT SHALL BE REPRODUCED OR TRANSMITTED IN ANY FORM OR BY ANY MEANS WITHOUT THE WRITTEN PERMISSION OF ACO.

No.	Date	Issue
1	03/31/2020	50% DESIGN DEVELOPMENT
2	06/01/2020	DESIGN DEVELOPMENT
3	06/09/2023	ISSUE FOR PERMIT - PHASE 1
4	07/12/2023	ISSUE FOR BID - PHASE 1

Job No.	Date
2020-1005	06/29/2023

Scale: AS NOTED  
Drawn / Checked: C.J./J.L.M.T.

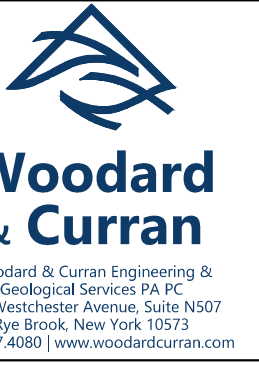
Sheet Number: **C-401**

**HARRISON  
RECREATION &  
COMMUNITY  
CENTER**

New Construction - Phase 1  
Town / Village of Harrison  
270 Harrison Avenue  
Harrison, NY 10528



285 MAIN STREET - MOUNT KISCO, NEW YORK 10549  
P:914.666.5900 KGDARCHITECTS.COM



CONSTRUCTION DOCUMENTS

**SCICLONEX DESIGN NOTES**

THE STANDARD SCX-04 CONFIGURATION IS SHOWN.

**PLAN VIEW**  
TOP SLAB NOT SHOWN

**SECTION A-A**

**SCICLONEX**  
www.Sciclonex.com

**SCX-04  
SCICLONEX  
STANDARD DETAIL**

**SITE SPECIFIC DATA REQUIREMENTS**

PIPE DATA	INVERT	MATERIAL	DIAMETER
INLET PIPE #1			
INLET PIPE #2			
OUTLET PIPE			

**GENERAL NOTES**

- CONTECH TO PROVIDE ALL MATERIALS UNLESS NOTED OTHERWISE.
- FOR SITE SPECIFIC DRAWINGS WITH DETAILED STRUCTURE DIMENSIONS AND WEIGHT, PLEASE CONTACT YOUR CONTECH ENGINEERED SOLUTIONS LLC REPRESENTATIVE. www.contechllc.com
- SCICLONEX WATER QUALITY STRUCTURE SHALL BE IN ACCORDANCE WITH ALL DESIGN DATA AND INFORMATION CONTAINED IN THIS DRAWING. CONTRACTOR TO CONFIRM STRUCTURE MEETS REQUIREMENTS OF PROJECT.
- SCICLONEX STRUCTURE SHALL MEET ASHSTO H800 LOAD RATING, ASSUMING EARTH COVER OF 2'-2" H<sub>2</sub>O AND GROUNDWATER ELEVATION AT OR BELOW THE OUTLET PIPE INVERT ELEVATION. ENGINEER OF RECORD TO CONFIRM ACTUAL GROUNDWATER ELEVATION. CASTINGS SHALL MEET ASHSTO M500 AND BE CAST WITH THE CONTECH LOGO.
- SCICLONEX STRUCTURE SHALL BE PRECAST CONCRETE CONFORMING TO ASTM C478 AND ASHSTO LOAD FACTOR DESIGN METHOD.
- ALTERNATE UNITS ARE SHOWN IN MILLIMETERS [mm].

**INSTALLATION NOTES**

- ANY SUBBASE, BACKFILL DEPTH, AND/OR ANTI-FLOTATION PROVISIONS ARE SITE-SPECIFIC DESIGN CONSIDERATIONS AND SHALL BE SPECIFIED BY ENGINEER OF RECORD.
- CONTRACTOR TO PROVIDE EQUIPMENT WITH SUFFICIENT LIFTING AND REACH CAPACITY TO LIFT AND SET THE SCICLONEX MANHOLE STRUCTURE.
- CONTRACTOR TO INSTALL JOINT SEALANT BETWEEN ALL STRUCTURE SECTIONS AND ASSEMBLY STRUCTURE.
- CONTRACTOR TO PROVIDE, INSTALL, AND GROUT INLET AND OUTLET PIPES. MATCH PIPE INVERTS WITH ELEVATIONS SHOWN. ALL PIPE CENTERLINES TO MATCH PIPE OPENING CENTERLINES.
- CONTRACTOR TO TAKE APPROPRIATE MEASURES TO ASSURE UNIT IS WATER TIGHT, HOLDING WATER TO FLOWLINE INVERT MINIMUM. IT IS SUGGESTED THAT ALL JOINTS BELOW PIPE INVERTS ARE GROUTED.

**JELLYFISH DESIGN NOTES**

JELLYFISH TREATMENT CAPACITY IS A FUNCTION OF THE CARTRIDGE SELECTION AND THE NUMBER OF CARTRIDGES. THE STANDARD MANHOLE STYLE IS SHOWN. 873" MANHOLE JELLYFISH PEAK TREATMENT CAPACITY IS 1.18 CFS. IF THE SITE CONDITIONS EXCEED 1.16 CFS AN UPSTREAM BYPASS STRUCTURE IS REQUIRED.

CARTRIDGE SELECTION	54"	40"	29"	16"
CARTRIDGE DEPTH	6'-0"	6'-0"	4'-2"	3'-2"
OUTLET INVERT TO STRUCTURE INVERT (ft)	0.16 / 0.09	0.13 / 0.065	0.06 / 0.045	0.06 / 0.026
MAX. CARTR. HIGH-FLOW / DRAINDOWN	6 / 1			

**PLAN VIEW**

**SECTION A-A**

**JELLYFISH JF6  
STANDARD DETAIL  
OFFLINE CONFIGURATION**

**SITE SPECIFIC DATA REQUIREMENTS**

STRUCTURE ID	FLOW RATE (CFS)	PEAK FLOW RATE (CFS)	RETURN PERIOD OF PEAK FLOW (hrs)	# OF CARTRIDGES REQUIRED (F#7 / D5)	CARTRIDGE SIZE

**PIPE DATA**

PIPE #	INVERT	MATERIAL	DIAMETER
INLET PIPE #1			
INLET PIPE #2			
OUTLET PIPE			

**GENERAL NOTES**

- CONTECH TO PROVIDE ALL MATERIALS UNLESS NOTED OTHERWISE.
- FOR SITE SPECIFIC DRAWINGS WITH DETAILED STRUCTURE DIMENSIONS AND WEIGHT, PLEASE CONTACT YOUR CONTECH ENGINEERED SOLUTIONS REPRESENTATIVE. www.contechllc.com
- JELLYFISH WATER QUALITY STRUCTURE SHALL BE IN ACCORDANCE WITH ALL DESIGN DATA AND INFORMATION CONTAINED IN THIS DRAWING. CONTRACTOR TO CONFIRM STRUCTURE MEETS REQUIREMENTS OF PROJECT.
- STRUCTURE SHALL MEET ASHSTO H800 OR PER APPROVED JURISDICTION REQUIREMENTS, WHICHEVER IS MORE STRINGENT, ASSUMING BATH COVER OF 2'-2" AND GROUNDWATER ELEVATION AT OR BELOW THE OUTLET PIPE INVERT ELEVATION. ENGINEER OF RECORD TO CONFIRM ACTUAL GROUNDWATER ELEVATION. CASTINGS SHALL MEET ASHSTO M500 LOAD RATING AND BE CAST WITH THE CONTECH LOGO.
- STRUCTURE SHALL BE PRECAST CONCRETE CONFORMING TO ASTM C478 AND ASHSTO LOAD FACTOR DESIGN METHOD.
- NO PRODUCT SUBSTITUTION SHALL BE ACCEPTED UNLESS SUBMITTED TO SAVE PRIOR TO PROJECT BID DATE OR AS DIRECTED BY THE ENGINEER OF RECORD.

**INSTALLATION NOTES**

- ANY SUBBASE, BACKFILL DEPTH, AND/OR ANTI-FLOTATION PROVISIONS ARE SITE-SPECIFIC DESIGN CONSIDERATIONS AND SHALL BE SPECIFIED BY ENGINEER OF RECORD.
- CONTRACTOR TO PROVIDE EQUIPMENT WITH SUFFICIENT LIFTING AND REACH CAPACITY TO LIFT AND SET THE STRUCTURE (LIFTING CLUTCHES PROVIDED).
- CONTRACTOR WILL INSTALL AND LEVEL THE STRUCTURE, SEALING THE JOINTS, LINE ENTRY AND EXIT POINTS (NON-SHRINK GROUT WITH APPROVED WATERSTOP OR FLEXIBLE BOOT).
- CONTRACTOR TO TAKE APPROPRIATE MEASURES TO PROTECT CARTRIDGES FROM CONSTRUCTION-RELATED EROSION RUNOFF.
- CARTRIDGE INSTALLATION, BY CONTECH, SHALL OCCUR ONLY AFTER SITE HAS BEEN STABILIZED AND THE JELLYFISH UNIT IS CLEAN AND FREE OF DEBRIS. CONTACT CONTECH TO COORDINATE CARTRIDGE INSTALLATION WITH SITE STABILIZATION AT (800) 740-2516.

**1 HYDRODYNAMIC SEPARATOR TREATMENT STRUCTURE (HDS-1, HDS-2)**  
NOT TO SCALE

**2 STORMWATER FILTER STRUCTURE (FS-1)**  
NOT TO SCALE

**PLAN VIEW**

**SECTION A-A**

**WEIR DATA TABLE**

STAGE	ELEVATION (FT)
SUMP	62.70
WEIR	63.64

**GENERAL**

- FOUNDATION COURSE FOR PRECAST CONCRETE STRUCTURES SHALL BE PLACED ON A COMPACTED LAYER OF APPROVED CRUSHED STONE HAVING A MINIMUM COMPACTED THICKNESS OF EIGHT (8) INCHES.
- ALL PRECAST CONCRETE STRUCTURES SHALL BE DESIGNED TO ACCOMMODATE AN HS-20 DESIGN LOAD.
- IT SHALL BE THE CONTRACTOR'S RESPONSIBILITY TO FURNISH AND CONSTRUCT THE PROPER SIZE STRUCTURE INCLUDING THE NECESSARY OPENINGS TO ACCOMMODATE THE WORK AS SHOWN ON THE DRAWINGS OR AS ORDERED BY THE ENGINEER (AOR), AT NO ADDITIONAL COST TO THE OWNER.
- ALL REQUIRED PATCHING FOR DRAINAGE STRUCTURES SHALL BE COMPLETED WITH NON-SHRINKING CEMENT MORTAR GROUT WITH MINIMUM 1,000 PSI COMPRESSIVE STRENGTH IN (1) DAY AND 5,000 PSI COMPRESSIVE STRENGTH IN (28) DAYS AS TESTED PER ASTM C109 AND ASTM C-707. PATCHING PRODUCTS INCLUDE "BURAGROUT" BY L & M CONST. CHEMICAL CO., "FIVE STAR GROUT" BY U.S. GROUT COMPANY OR APPROVED EQUAL.
- REFER TO PROJECT SPECIFICATIONS FOR DRAINAGE AND SANITARY PIPE CONNECTIONS INTO PRECAST CONCRETE STRUCTURES.
- PIPES SHALL BE CUT FLUSH WITH THE INSIDE WALL OF THE STRUCTURE.
- MINIMUM COMPRESSIVE STRENGTH OF CLASS 'A' CONCRETE (4,000 PSI).
- PRECAST CONCRETE STRUCTURE LIFT HOLES SHALL BE PLUGGED AND MORTARED.
- STRUCTURES SHALL CONFORM TO CURRENT ASTM AND OSHA REQUIREMENTS.
- PRECAST CONCRETE STRUCTURE JOINTS SHALL CONFORM TO THE CURRENT ASTM DESIGNATION C-443.
- PRECAST CONCRETE STRUCTURES SHALL COMPLY WITH ASTM STANDARD C-478. MANHOLE JOINTS SHALL COMPLY WITH ASTM STANDARD C-443.

**MANHOLES**

- FOR PRECAST CONCRETE MANHOLES FIVE (5) FEET OR LESS IN HEIGHT, TOP CONE SECTION SHALL BE REPLACED WITH PRECAST REINFORCED CONCRETE SLAB (6" MIN. THICKNESS) WITH OPENING OF SUFFICIENT SIZE TO ACCOMMODATE MANHOLE CASTING.
- FOR MANHOLES 10 FEET OR MORE IN DEPTH, MANHOLE DIAMETER SHALL BE FIVE (5) FEET.
- TERMINAL MANHOLE FLOORS SHALL BE SLOPED TOWARD OUTFALL PIPE.

**PLAN VIEW**

**SECTION A-A**

**WEIR DATA TABLE**

STAGE	ELEVATION (FT)
SUMP	62.70
WEIR	63.64

**GENERAL**

- FOUNDATION COURSE FOR PRECAST CONCRETE STRUCTURES SHALL BE PLACED ON A COMPACTED LAYER OF APPROVED CRUSHED STONE HAVING A MINIMUM COMPACTED THICKNESS OF EIGHT (8) INCHES.
- ALL PRECAST CONCRETE STRUCTURES SHALL BE DESIGNED TO ACCOMMODATE AN HS-20 DESIGN LOAD.
- IT SHALL BE THE CONTRACTOR'S RESPONSIBILITY TO FURNISH AND CONSTRUCT THE PROPER SIZE STRUCTURE INCLUDING THE NECESSARY OPENINGS TO ACCOMMODATE THE WORK AS SHOWN ON THE DRAWINGS OR AS ORDERED BY THE ENGINEER (AOR), AT NO ADDITIONAL COST TO THE OWNER.
- ALL REQUIRED PATCHING FOR DRAINAGE STRUCTURES SHALL BE COMPLETED WITH NON-SHRINKING CEMENT MORTAR GROUT WITH MINIMUM 1,000 PSI COMPRESSIVE STRENGTH IN (1) DAY AND 5,000 PSI COMPRESSIVE STRENGTH IN (28) DAYS AS TESTED PER ASTM C109 AND ASTM C-707. PATCHING PRODUCTS INCLUDE "BURAGROUT" BY L & M CONST. CHEMICAL CO., "FIVE STAR GROUT" BY U.S. GROUT COMPANY OR APPROVED EQUAL.
- REFER TO PROJECT SPECIFICATIONS FOR DRAINAGE AND SANITARY PIPE CONNECTIONS INTO PRECAST CONCRETE STRUCTURES.
- PIPES SHALL BE CUT FLUSH WITH THE INSIDE WALL OF THE STRUCTURE.
- MINIMUM COMPRESSIVE STRENGTH OF CLASS 'A' CONCRETE (4,000 PSI).
- PRECAST CONCRETE STRUCTURE LIFT HOLES SHALL BE PLUGGED AND MORTARED.
- STRUCTURES SHALL CONFORM TO CURRENT ASTM AND OSHA REQUIREMENTS.
- PRECAST CONCRETE STRUCTURE JOINTS SHALL CONFORM TO THE CURRENT ASTM DESIGNATION C-443.
- PRECAST CONCRETE STRUCTURES SHALL COMPLY WITH ASTM STANDARD C-478. MANHOLE JOINTS SHALL COMPLY WITH ASTM STANDARD C-443.

**MANHOLES**

- FOR PRECAST CONCRETE MANHOLES FIVE (5) FEET OR LESS IN HEIGHT, TOP CONE SECTION SHALL BE REPLACED WITH PRECAST REINFORCED CONCRETE SLAB (6" MIN. THICKNESS) WITH OPENING OF SUFFICIENT SIZE TO ACCOMMODATE MANHOLE CASTING.
- FOR MANHOLES 10 FEET OR MORE IN DEPTH, MANHOLE DIAMETER SHALL BE FIVE (5) FEET.
- TERMINAL MANHOLE FLOORS SHALL BE SLOPED TOWARD OUTFALL PIPE.

**3 OUTLET CONTROL STRUCTURE**  
NOT TO SCALE

NOTE: ALL IDEAL, REVISION, AMENDMENTS AND PLANS DEVELOPED OR REPRESENTED BY THIS DRAWING ARE OWNED BY AND ARE THE PROPERTY OF KG+D ARCHITECTS, PC AND NO PARTS HEREOF SHOULD BE REPRODUCED OR USED IN ANY PROJECT WITHOUT THE WRITTEN PERMISSION OF KG+D.

WRITTEN DIMENSIONS ON THIS DRAWING SHALL HAVE PRECEDENCE OVER SCALE DIMENSIONS. CONTRACTOR SHALL VERIFY ALL ACTUAL DIMENSIONS AND CONDITIONS ON THE JOB AND THE ARCHITECT MUST BE NOTIFIED OF ANY VARIATIONS FROM DIMENSIONS AND CONDITIONS SHOWN. DISCREPANCIES MUST BE SUBMITTED TO THIS OFFICE FOR APPROVAL BEFORE PROCEEDING WITH FABRICATION.

ALTERATIONS BY ANY PERSON IN ANY WAY, OF ANY ITEM CONTAINED ON THIS DOCUMENT, UNLESS ACTING UNDER THE DIRECTION OF THE LICENSED ARCHITECT WHOSE PROFESSIONAL SEAL IS ATTACHED HERETO, IS A VIOLATION OF TITLE 18, SECTION 18.0.1 (a) (3) OF NEW YORK STATE LAW.

© COPYRIGHT KG+D ARCHITECTS, PC. ALL RIGHTS RESERVED.

No.	Date	Issue
4	07/12/2023	ISSUE FOR BID - PHASE 1
3	06/09/2023	ISSUE FOR PERMIT - PHASE 1
2	06/01/2020	DESIGN DEVELOPMENT
1	03/31/2020	50% DESIGN DEVELOPMENT

**CONSTRUCTION  
DETAILS**

Job No. 2020-1005 Date 06/29/2023  
Scale AS NOTED Drawn / Checked CJU/JLMT  
Sheet Number

# HARRISON RECREATION & COMMUNITY CENTER

New Construction - Phase 1  
Town / Village of Harrison  
270 Harrison Avenue  
Harrison, NY 10528

**KG+D** listen imagine build  
KG+D ARCHITECTS, PC  
285 MAIN STREET - MOUNT KISCO, NEW YORK 10549  
P914.666.5900 KGDARCHITECTS.COM

**Woodard & Curran**  
Woodard & Curran Engineering & Architecture  
600 Westchester Avenue, Suite 1007  
New York, New York 10571  
800.801.4280 | www.woodardcurran.com

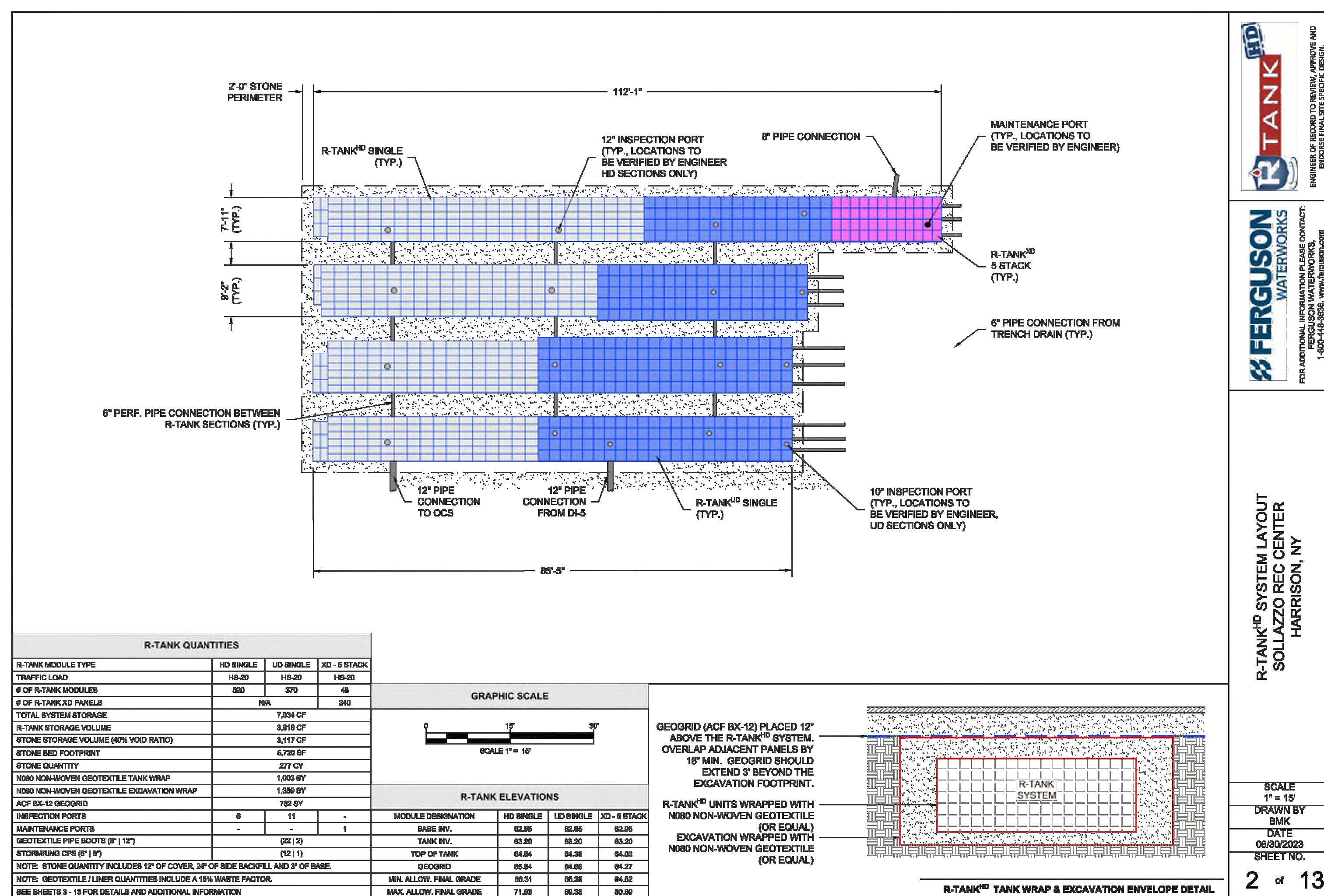
CONSTRUCTION DOCUMENTS



**R-TANK**  
FERGUSON WATERWORKS  
FOR ADDITIONAL INFORMATION PLEASE CONTACT:  
1-800-343-3333 WWW.FERGUSONWATERWORKS.COM

R-TANK® SYSTEM OVERLAY  
SOLLAZZO REC CENTER  
HARRISON, NY

SCALE 1" = 10'  
DRAWN BY: BMK  
DATE: 06/09/2023  
SHEET NO.: 1 of 13



R-TANK QUANTITIES			
R-TANK MODULE TYPE	HD SINGLE	LD SINGLE	XD - 3 STACK
TRAFFIC LOAD	HS-20	HS-20	HS-20
# OF R-TANK MODULES	502	279	48
# OF R-TANK XD PANELS	N/A	279	48
TOTAL SYSTEM STORAGE	7,294 CF		
R-TANK STORAGE VOLUME	3,974 CF		
STONE STORAGE VOLUME (80% VOID RATE)	3,117 CF		
STONE BED FOOTPRINT	8,725 SF		
STONE QUANTITY	277 CY		
NON-WOVEN GEOTEXTILE TANK WRAP	1,083 SF		
ACF BX-12 GEOTEXTILE	182 SF		
INSPECTION PORTS	8	11	
MAINTENANCE PORTS			1
GEOTEXTILE PIPE BOOT (8" 1/2")	282 (3)		
STORMING CPS (8" 1/2")			121 (1)

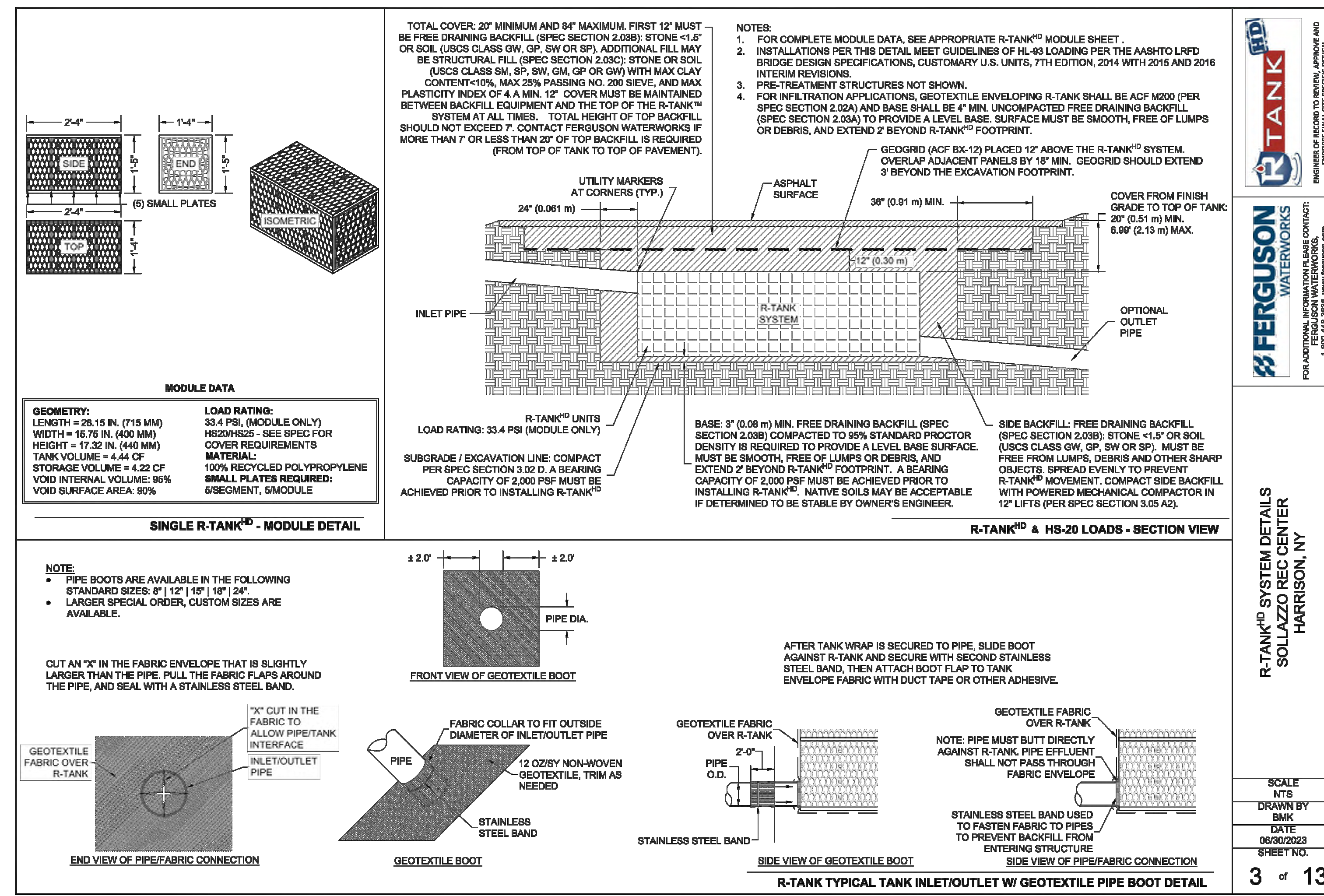
  

R-TANK ELEVATIONS			
MODULE DESIGNATION	HD SINGLE	LD SINGLE	XD - 3 STACK
BASE INV.	62.20	62.20	62.20
TANK INV.	62.20	62.20	62.20
TOP OF TANK	64.64	64.38	64.02
NOTE: STONE QUANTITY INCLUDES 12" OF COVER, 2" OF SIDE BACKFILL, AND 2" OF BASE			
MIN. ALLOW. FINAL GRADE	64.31	64.38	64.02
MAX. ALLOW. FINAL GRADE	71.82	68.38	65.08

**R-TANK**  
FERGUSON WATERWORKS  
FOR ADDITIONAL INFORMATION PLEASE CONTACT:  
1-800-343-3333 WWW.FERGUSONWATERWORKS.COM

R-TANK® SYSTEM LAYOUT  
SOLLAZZO REC CENTER  
HARRISON, NY

SCALE 1" = 10'  
DRAWN BY: BMK  
DATE: 06/09/2023  
SHEET NO.: 2 of 13

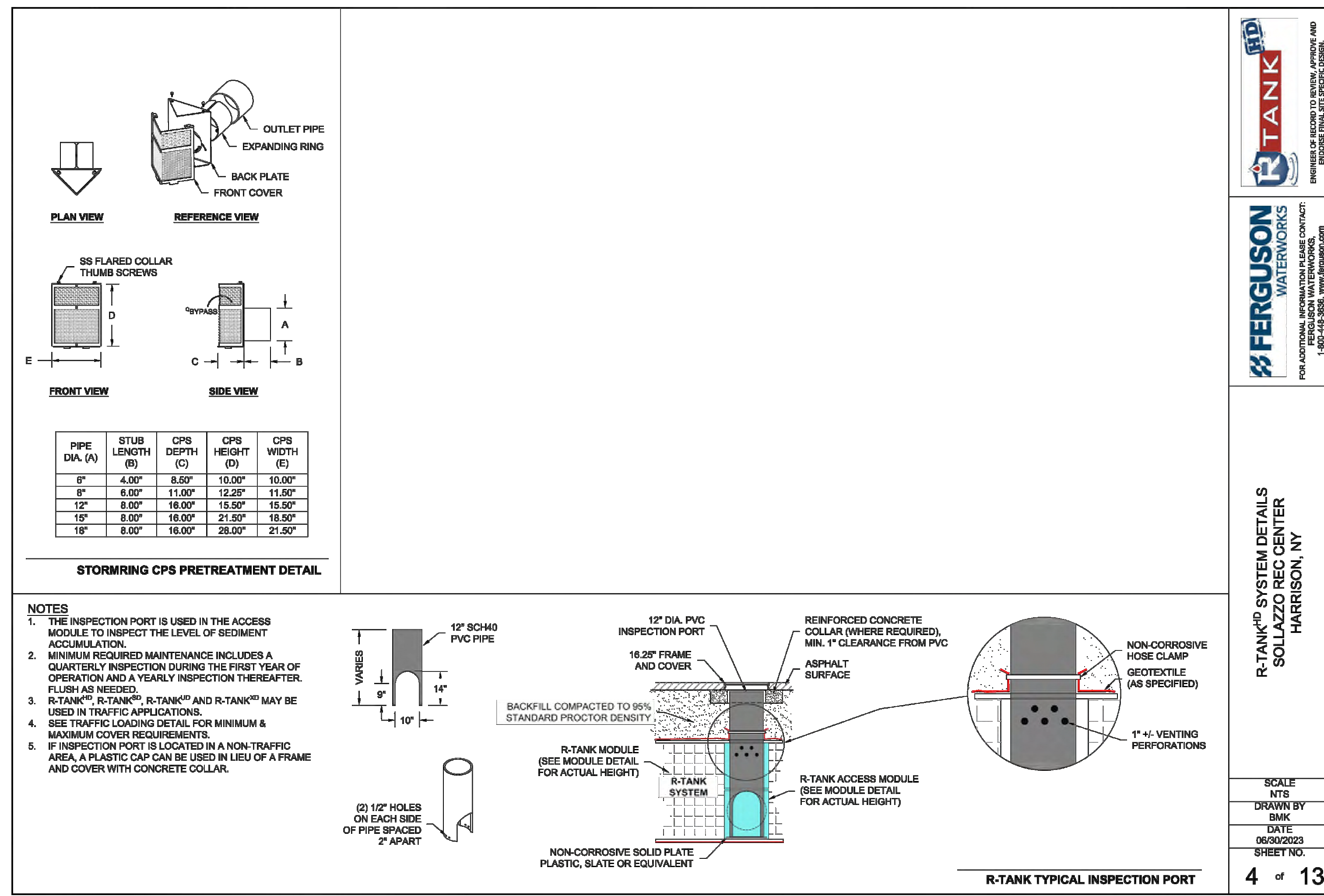


MODULE DATA	
<b>GEOMETRY:</b>	<b>LOAD RATING:</b>
LENGTH = 28.15 IN. (716 MM)	33.4 PSF (MODULE ONLY)
WIDTH = 16.75 IN. (426 MM)	HS20/HS25 - SEE SPEC FOR COVER REQUIREMENTS
HEIGHT = 17.22 IN. (437 MM)	TANK VOLUME = 4.44 CF
STORAGE VOLUME = 4.22 CF	100% RECYCLED POLYPROPYLENE
VOID INTERNAL VOLUME: 96%	SMALL PLATES REQUIRED
VOID SURFACE AREA: 90%	5 SEGMENT, 5 MODULE

**R-TANK**  
FERGUSON WATERWORKS  
FOR ADDITIONAL INFORMATION PLEASE CONTACT:  
1-800-343-3333 WWW.FERGUSONWATERWORKS.COM

R-TANK® SYSTEM DETAILS  
SOLLAZZO REC CENTER  
HARRISON, NY

SCALE 1" = 10'  
DRAWN BY: BMK  
DATE: 06/09/2023  
SHEET NO.: 3 of 13



PIPE DIA. (A)	STUB LENGTH (B)	CPS DEPTH (C)	CPS HEIGHT (D)	CPS WIDTH (E)
6"	4.00"	8.50"	10.00"	10.00"
8"	6.00"	11.00"	12.25"	11.50"
12"	8.00"	16.00"	18.50"	15.50"
16"	8.00"	18.00"	21.25"	18.50"
18"	8.00"	18.00"	28.00"	21.50"

**R-TANK**  
FERGUSON WATERWORKS  
FOR ADDITIONAL INFORMATION PLEASE CONTACT:  
1-800-343-3333 WWW.FERGUSONWATERWORKS.COM

R-TANK® SYSTEM DETAILS  
SOLLAZZO REC CENTER  
HARRISON, NY

SCALE 1" = 10'  
DRAWN BY: BMK  
DATE: 06/09/2023  
SHEET NO.: 4 of 13

NOTE: ALL EXIST. UTILITY ARRANGEMENTS AND PLANS INDICATED OR REPRESENTED BY THIS DRAWING ARE OWNED BY AND ARE THE PROPERTY OF KG+D ARCHITECTS, PC AND, WHERE APPLICABLE, FOR USE ON THE PROJECT. NONE OF SUCH EXIST. UTILITY ARRANGEMENTS OR PLANS SHALL BE USED BY ANY CONTRACTOR OR OTHER PARTY WITHOUT THE WRITTEN PERMISSION OF KG+D.

WRITTEN DIMENSIONS ON THIS DRAWING SHALL HAVE PRECEDENCE OVER SCALED DIMENSIONS. CONTRACTOR SHALL VERIFY ALL ACTUAL DIMENSIONS AND CONDITIONS ON THE JOB AND THE ARCHITECT MUST BE NOTIFIED OF ANY VARIATIONS FROM DIMENSIONS AND CONDITIONS BEFORE PROCEEDING WITH FABRICATION.

ALTERATIONS BY ANY PERSON IN ANY WAY, OF ANY ITEM CONTAINED ON THIS DOCUMENT, UNLESS ACTING UNDER THE DIRECTION OF THE LICENSED ARCHITECT WHOSE PROFESSIONAL SEAL IS AFFIXED HERETO, IS A VIOLATION OF TITLE 16, SECT. 86.03 OF NEW YORK STATE LAW.

© COPYRIGHT 2023 BY KG+D ARCHITECTS, PC. ALL RIGHTS RESERVED.

No.	Date	Issue
4	07/12/2023	ISSUE FOR BID - PHASE 1
3	06/09/2023	ISSUE FOR PERMIT - PHASE 1
2	06/01/2020	DESIGN DEVELOPMENT
1	03/31/2020	50% DESIGN DEVELOPMENT

## CONSTRUCTION DETAILS

Job No. 2020-1005 Date 06/29/2023  
Scale AS NOTED Drawn / Checked CJU/JLMT  
Sheet Number

C-403