

BULLETIN # 3 4

DATE: April 28, 2026

TO: Piazza Inc.
Attn: John Piazza

CC: Chaker Maghak, Hill Intl.

FROM: Brian Dunn, AIA
KG+D Architects, PC

PROJECT: Harrison Recreation & Community Center – PHASE 2
Harrison, NY

RE: Remove AV Components at Room 106B



On the north wall of Room 106B remove the AV components installed in the wall that are projecting out past the face of the drywall to allow for the installation of the casework as shown on the attached mark up.

Encl:

KG+D Architects, PC

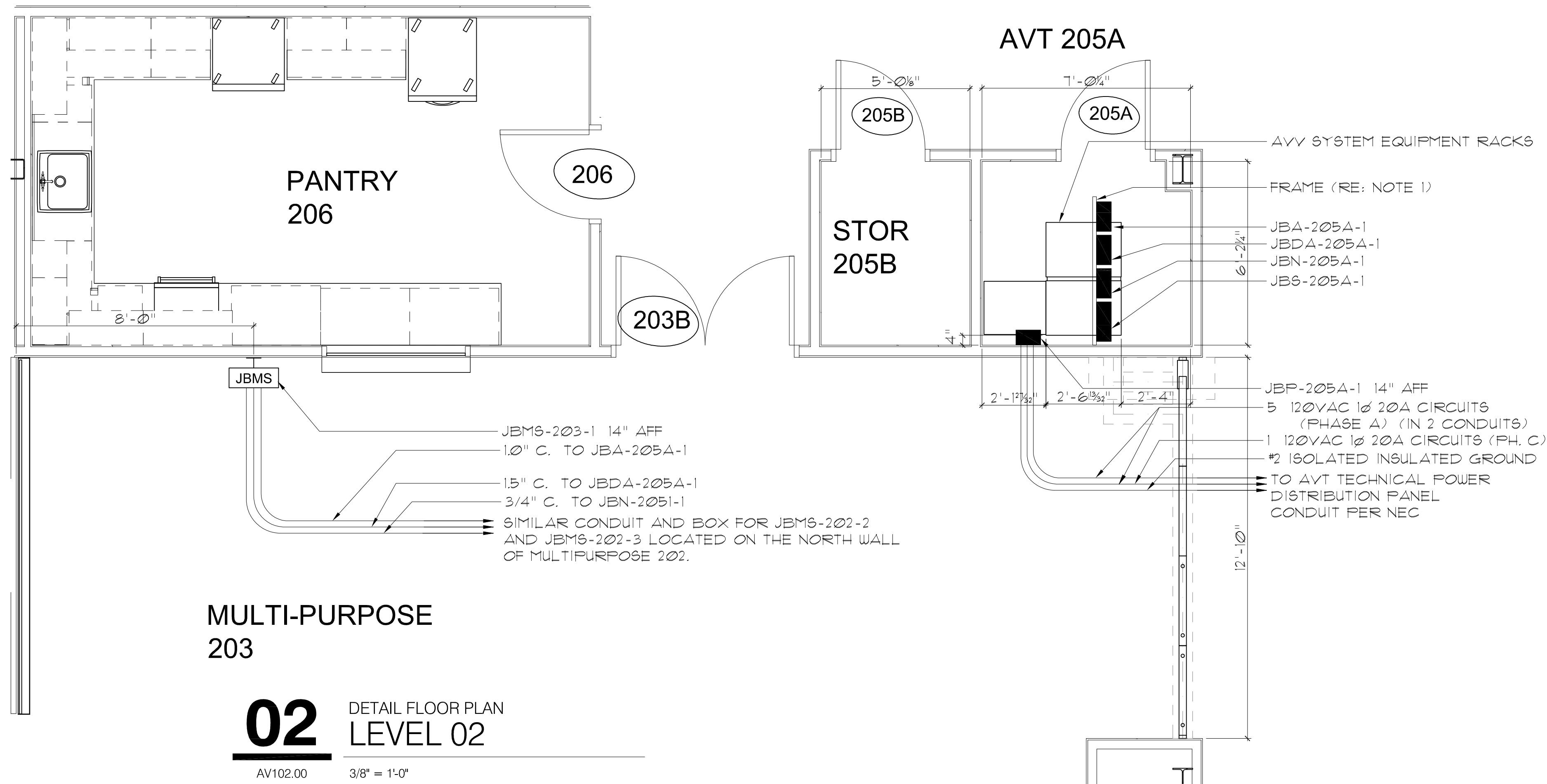
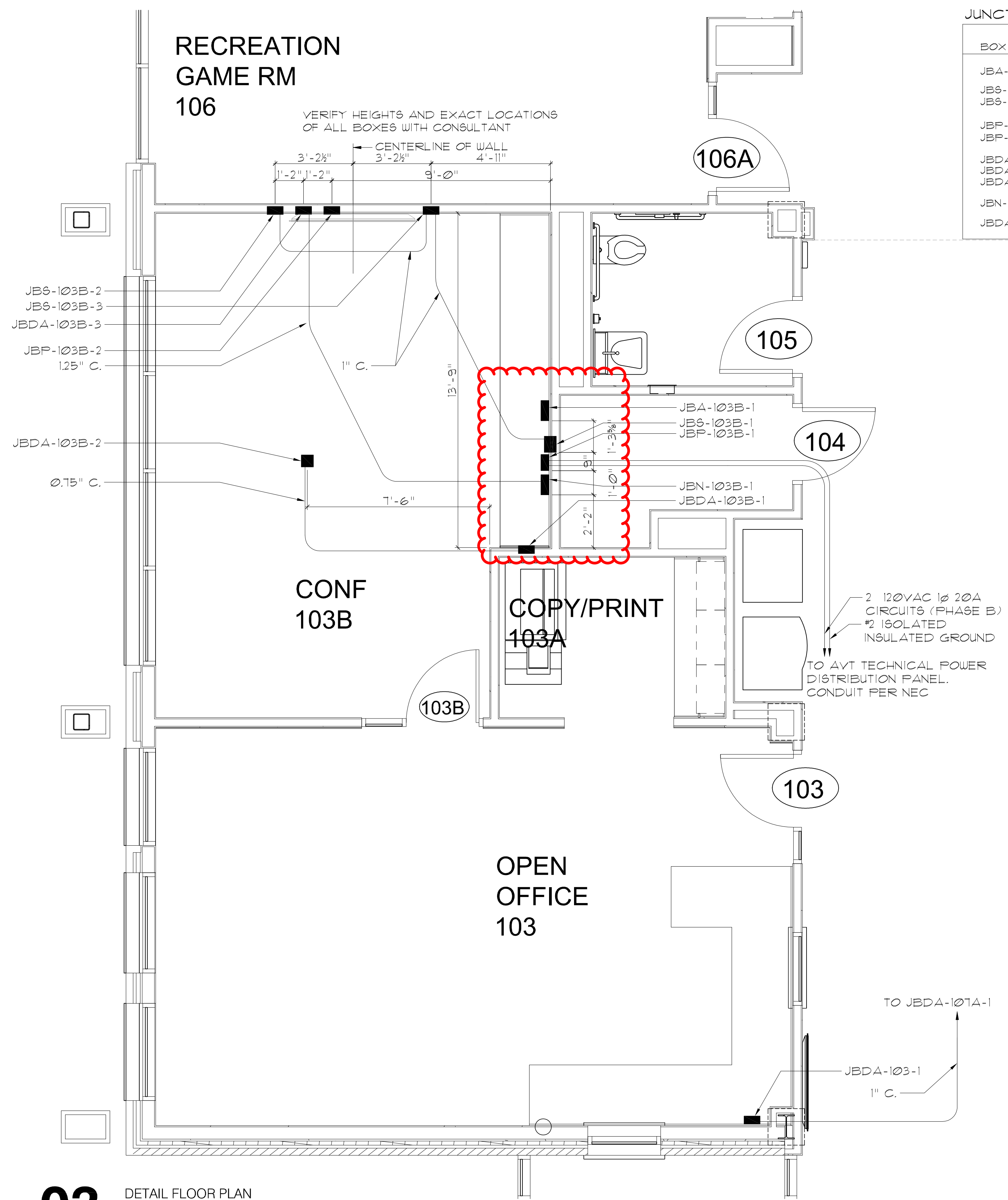
285 Main Street, Mount Kisco, New York 10549
914.666.5900 kgdarchitects.com

JUNCTION BOX SCHEDULE - CONFERENCE ROOM

BOX	WIDTH, IN.	HEIGHT, IN.	DEPTH, IN.	MTG HGT	MTG STYLE	MFR	MODEL	NOTES
JBA-103B-1	10"	10"	4"	14"	SURFACE	HOFFMAN	A-1010SC	
JBS-103B-1	8"	10"	6"	14"	SEMI-RECESSED FLUSH	HOFFMAN RACO	A-10086SC 696	
JBS-103B-2, 3	2 GANG	-	-	6'-6"	-	-	-	
JBP-103B-1	8"	10"	4"	10"	SEMI-RECESSED FLUSH	HOFFMAN RACO	A-10086SC 696	VERIFY LOCATION
JBP-103B-2	2 GANG	-	-	6'-6"	-	-	-	
JBDA-103B-1	8"	10"	6"	14"	SEMI-RECESSED FLUSH	HOFFMAN RACO	A-10086SC 696	
JBDA-103B-2	2 GANG	-	-	ABOVE CLG	-	-	-	
JBDA-103B-3	2 GANG	-	-	14"	-	-	-	
JBN-103B-1	10"	10"	4"	14"	SURFACE	HOFFMAN	A-1010SC	
JBDA-103-1	3 GANG	-	3.75"	14"	FLUSH	RACO	69T	

JUNCTION BOX SCHEDULE AV205A

BOX	WIDTH, IN.	HEIGHT, IN.	DEPTH, IN.	(BOT AFF) MTG HGT	MTG STYLE	MFR	MODEL	NOTES
JBP-205A-1	10"	10"	6"	14"	SURFACE	HOFFMAN	A-1010SC	
JBA-205A-1	12"	16"	6"	7'-8"	FRAME	HOFFMAN	C-SD16166	NOTE 1. DOOR FACES NORTH
JBDA-205A-1	12"	16"	6"	7'-8"	FRAME	HOFFMAN	C-SD16126	NOTE 1. DOOR FACES NORTH
JBN-205A-1	12"	16"	6"	7'-8"	FRAME	HOFFMAN	C-SD16166	NOTE 1. DOOR FACES NORTH
JBS-205A-1	16"	16"	6"	7'-8"	FRAME	HOFFMAN	C-SD16166	NOTE 1. DOOR FACES NORTH



03 DETAIL FLOOR PLAN LEVEL 01
 AV102.00 3/8" = 1'-0"

NOTES - GENERAL

- INSTALL WOOD OR TREX INSULATING BASE UNDER AUDIO/VIDEO/TELEVISION AND NETWORK EQUIPMENT RACKS, EXCEPT FOR THOSE IN MILLWORK SUCH AS CONF 103B. REFER TO SPECIFICATIONS.
- IF ANY WALL MOUNTED BACKBOARDS ARE SHOWN, FURNISH BIRCH VENEER HARDWOOD PLYWOOD, FIRE RATED, PRIMED AND PAINTED TWO COATS FLAT GREY ENAMEL PAINT. INSTALL USING STAINLESS STEEL HARDWARE.
- ALL HARDWARE IN THE AV/T SYSTEM EMPLOYED FOR ANY PURPOSE SHALL BE STAINLESS STEEL.
- VERIFY WITH AND OBTAIN THE APPROVAL OF THE CONSULTANT FOR ALL CONDUIT ROUTING.
- JUNCTION BOX MOUNTING HEIGHTS ARE TO THE BOTTOM OF THE BOX, UNLESS OTHERWISE NOTED.

NOTES - JUNCTION BOXES

- INSTALL BOX ON FRAME OF UNISTRUT OR KINDORF CONSTRUCTION CHANNEL SUPPORTED TO STRUCTURE, FASTENED TO SIDES AND BACK OF BOX ONLY. LEAVE TOP AND BOTTOM OF BOX CLEAR FOR BUILDING CONDUIT ENTRY AND WATERTIGHT FLEXIBLE CONDUIT TO RACKS, RESPECTIVELY. IN SOME CASES, SUCH AS AC POWER BOXES, CONDUITS COME INTO THE SIDE OF THE BOX AS WELL.
- INSTALL BOX ON FRAME OF UNISTRUT OR KINDORF CONSTRUCTION CHANNEL.
- CUSTOM BOX WITH THREE FULLY ENCLOSED SECTIONS.
- SIZE ALL AC POWER CONDUIT SHOWN ON THIS DRAWING ACCORDING TO THE NEC AND THE ELECTRICAL SPECIFICATIONS, WITH SPARE CAPACITY IN ADDITION. PROPOSE SIZES FOR REVIEW ON THE SUBMITTAL DRAWINGS.
- VERIFY WITH ARCHITECT.
- VERIFY WITH CONSULTANT.
- SEE AVV 104 FOR LEGENDS AND NOTES PERTAINING TO TELEVISION DISTRIBUTION SYSTEM

JUNCTION BOX SCHEDULE AV107A

BOX	WIDTH, IN.	HEIGHT, IN.	DEPTH, IN.	(BOT AFF) MTG HGT	MTG STYLE	MFR	MODEL	NOTES
JBP-107A-1	10"	10"	6"	14"	SURFACE	HOFFMAN	A-1010SC	
JBA-107A-1	12"	16"	6"	7'-8"	FRAME	HOFFMAN	C-SD16166	NOTE 1. DOOR FACES NORTH
JBDA-107A-1	12"	16"	6"	7'-8"	FRAME	HOFFMAN	C-SD16126	NOTE 1. DOOR FACES NORTH
JBN-107A-1	12"	16"	6"	7'-8"	FRAME	HOFFMAN	C-SD16166	NOTE 1. DOOR FACES NORTH
JBS-107A-1	16"	16"	6"	7'-8"	FRAME	HOFFMAN	C-SD16166	NOTE 1. DOOR FACES NORTH
JBDA-107-1	16"	10"	6"	14"	SURFACE IN CABINET	HOFFMAN	C-SD16106	NOTE 1. DOOR FACES WEST

02 DETAIL FLOOR PLAN LEVEL 02
 AV102.00 3/8" = 1'-0"

01 DETAIL FLOOR PLAN LEVEL 01
 AV102.00 3/8" = 1'-0"

NOTE: ALL IDEAS, DESIGNS, ARRANGEMENTS AND AREAS INDICATED OR REFERENCED BY THIS DRAWING ARE OWNED BY AND ARE THE PROPERTY OF KG+D ARCHITECTS, PC AND SHALL BE KEPT CONFIDENTIAL AND NOT BE REPRODUCED OR TRANSMITTED IN ANY FORM OR BY ANY MEANS, ELECTRONIC OR MECHANICAL, INCLUDING PHOTOCOPYING, RECORDING, OR BY ANY INFORMATION STORAGE AND RETRIEVAL SYSTEM, WITHOUT THE WRITTEN PERMISSION OF KG+D.

WRITTEN DIMENSIONS ON THIS DRAWING SHALL HAVE PRECEDENCE OVER SCALED DIMENSIONS. CONTRACTOR SHALL VERIFY ALL ACTUAL DIMENSIONS AND CONDITIONS ON THE JOB AND THE ARCHITECT SHALL BE NOTIFIED OF ANY VARIATIONS FROM DIMENSIONS AND CONDITIONS SHOWN. SHOP DETAILS MUST BE SUBMITTED TO THE OFFICE FOR APPROVAL BEFORE PROCEEDING WITH FABRICATION.

ALTERATIONS BY ANY PERSON IN ANY WAY OF ANY ITEM CONTAINED ON THIS DOCUMENT, UNLESS AUTHORIZED UNDER THE DIRECTION OF THE REGISTERED ARCHITECT OR PROFESSIONAL SEAL, IS A VIOLATION OF TITLE 16, SECTION 16-05 OF THE NEW YORK STATE LAW.

Professional Seal



No.	Date	Issue
8	10/09/2024	FOR CONSTRUCTION
2	08/05/2024	Issued for Bid
1	02/14/2024	Progress

AVT System Conduit System Plan Details

Job No.	Date
2020-1005	02/06/24

Scale	Drawn / Checked	Author / Checker
AS NOTED		

Sheet Number
AVV102