

# BULLETIN # 26



**DATE:** March 3, 2026

**TO:** Piazza Inc.  
Attn: John Piazza

**CC:** Chaker Maghak, Hill Intl.

**FROM:** Brian Dunn, AIA  
KG+D Architects, PC

**PROJECT:** Harrison Recreation & Community Center – PHASE 2  
Harrison, NY

**RE:** Wall Covering vs Paint Accents

As discussed with the client, the attached sketch demonstrates the appropriate vinyl wall covering in the project. The sketch indicates locations of installation (wall vs folding partitions).

- The all vinyl wall covering in the project to be Lentex, Luminous – *Bobbin Weave*.

Note that some previous vinyl wall covering locations are to now be painted with an accent color. See the sketch to confirm which locations.

Examine the attachment and provide pricing for review. Also, please include information on any schedule impact for this work. If there are questions or require more information, please reach out to the Design Team.

Encl: *Bulletin #26: A502 & A503 markup*

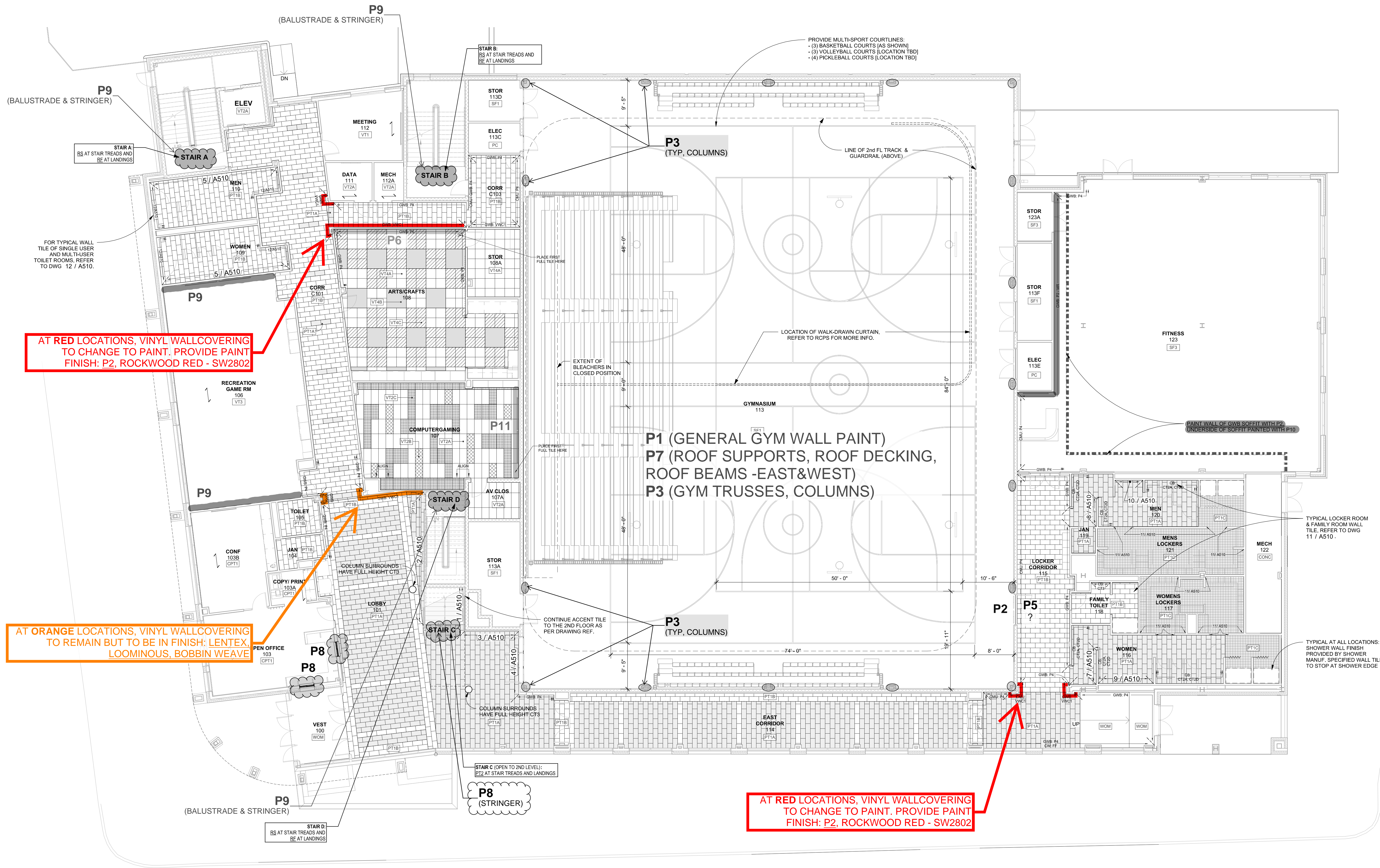
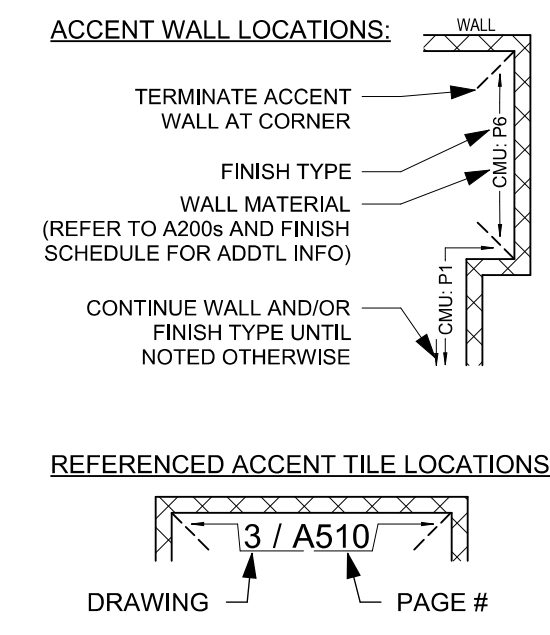
**CONSTRUCTION DOCUMENTS**

**FLOOR PATTERN LEGEND FOR VINYL TILE:**

- VT4A
- VT4B
- VT4C
- VT2A
- VT2B
- VT2C

**FINISH PLAN LEGEND**

- LV1 TAG INDICATES FLOOR FINISH TYPE.
  - FLOOR FINISH ORIENTATION (LENGTH TO FOLLOW ARROW)
- NOTE: MORE FINISHES ARE NOTED THROUGHOUT THE DRAWINGS AS WELL AS ON THE FINISH SCHEDULE AND IN THE SPECIFICATIONS.



AT RED LOCATIONS, VINYL WALLCOVERING TO CHANGE TO PAINT. PROVIDE PAINT FINISH: P2, ROCKWOOD RED - SW2802

AT ORANGE LOCATIONS, VINYL WALLCOVERING TO REMAIN BUT TO BE IN FINISH: LENTEX LOOMINOUS, BOBBIN WEAWE

AT RED LOCATIONS, VINYL WALLCOVERING TO CHANGE TO PAINT. PROVIDE PAINT FINISH: P2, ROCKWOOD RED - SW2802

- P4 (GENERAL WALL PAINT)
- P10 (GENERAL CEILING/GYP PAINT)
- P5 (HM FRAMES)
- P8 (HM DOOR PANELS)

NOTE: ALL DESIGN, DESIGN, ARRANGEMENTS AND PLANS INDICATED OR REPRESENTED BY THIS DRAWING ARE OWNED BY AND ARE THE PROPERTY OF KG+D ARCHITECTS, PC. NO PART OF THIS DRAWING SHALL BE REPRODUCED OR TRANSMITTED IN ANY FORM OR BY ANY MEANS, ELECTRONIC OR MECHANICAL, INCLUDING PHOTOCOPYING, RECORDING, OR BY ANY INFORMATION STORAGE AND RETRIEVAL SYSTEM, WITHOUT THE WRITTEN PERMISSION OF KG+D ARCHITECTS, PC.

WRITTEN DIMENSIONS ON THIS DRAWING SHALL TAKE PRECEDENCE OVER SCALE DIMENSIONS. CONTRACTOR SHALL VERIFY ALL ACTUAL DIMENSIONS AND CONDITIONS ON THE JOB AND THE ARCHITECT MUST BE NOTIFIED OF ANY VARIATIONS FROM DIMENSIONS AND CONDITIONS SHOWN. SHOP DETAILS MUST BE SUBMITTED TO THIS OFFICE FOR APPROVAL BEFORE PROCEEDING WITH FABRICATION.

ALTERATIONS BY ANY PERSON IN ANY WAY OF ANY ITEM CONTAINED ON THIS DOCUMENT, UNLESS ACTING UNDER THE DIRECTION OF THE LICENSED ARCHITECT WHOSE PROFESSIONAL SEAL IS APPLIED HERETO, IS A VIOLATION OF TITLE 16, SECTION 17-03.0 OF NEW YORK STATE LAW. COPYRIGHT © 2024 KG+D ARCHITECTS, PC. ALL RIGHTS RESERVED.

Professional Seal

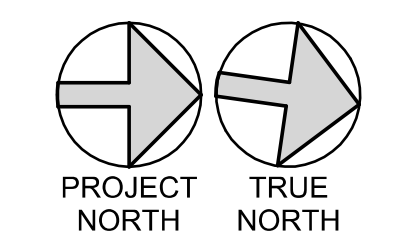
12/10/2023	SUBMITTAL 0929000-004
4 06/05/2024	ISSUED FOR BID
3 01/16/2024	ISSUED FOR PERMIT
2 06/01/2020	DESIGN DEVELOPMENT
1 03/31/2020	50% DESIGN DEVELOPMENT

Sheet Title

**1st FLOOR PLAN FINISH PLAN**

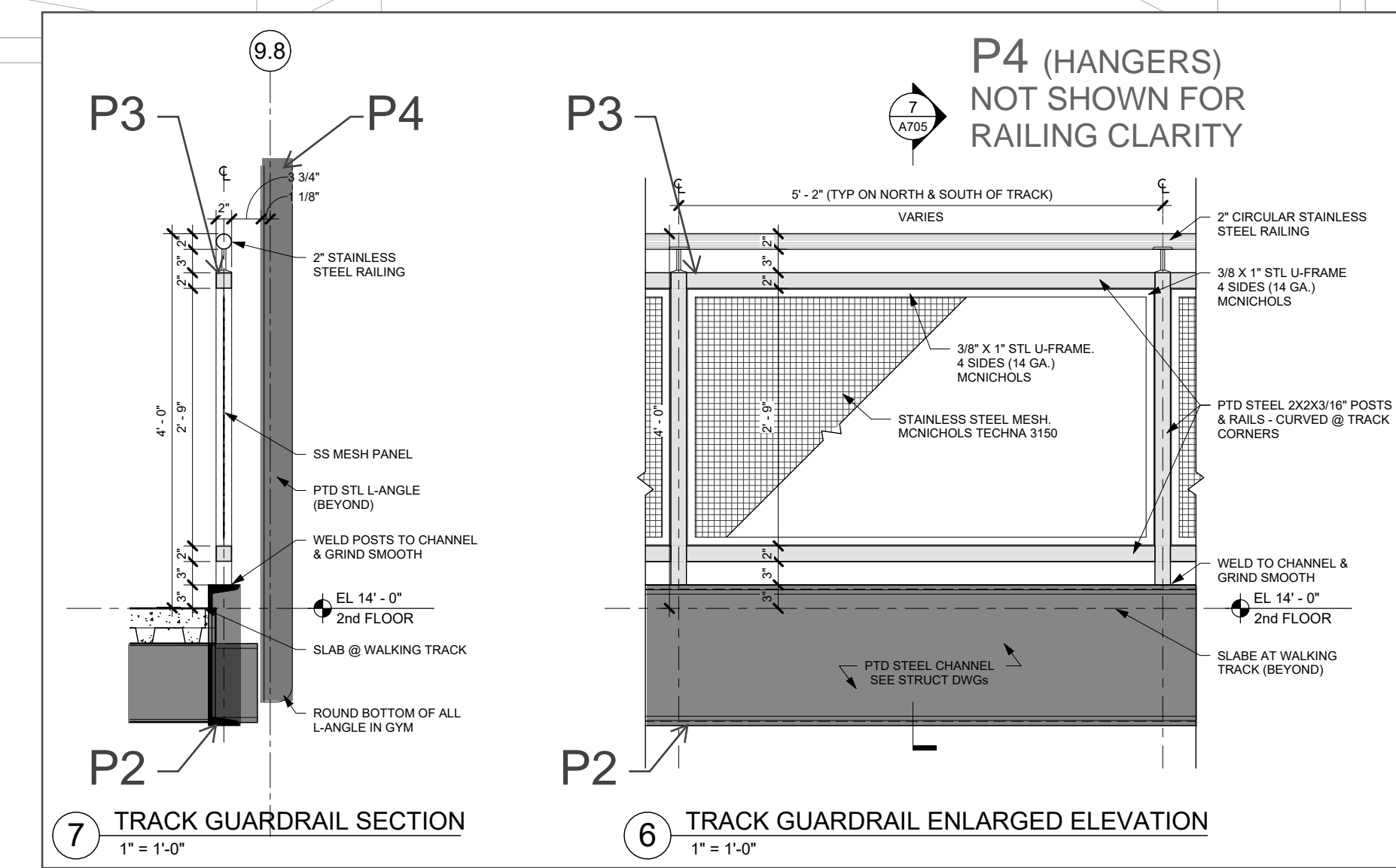
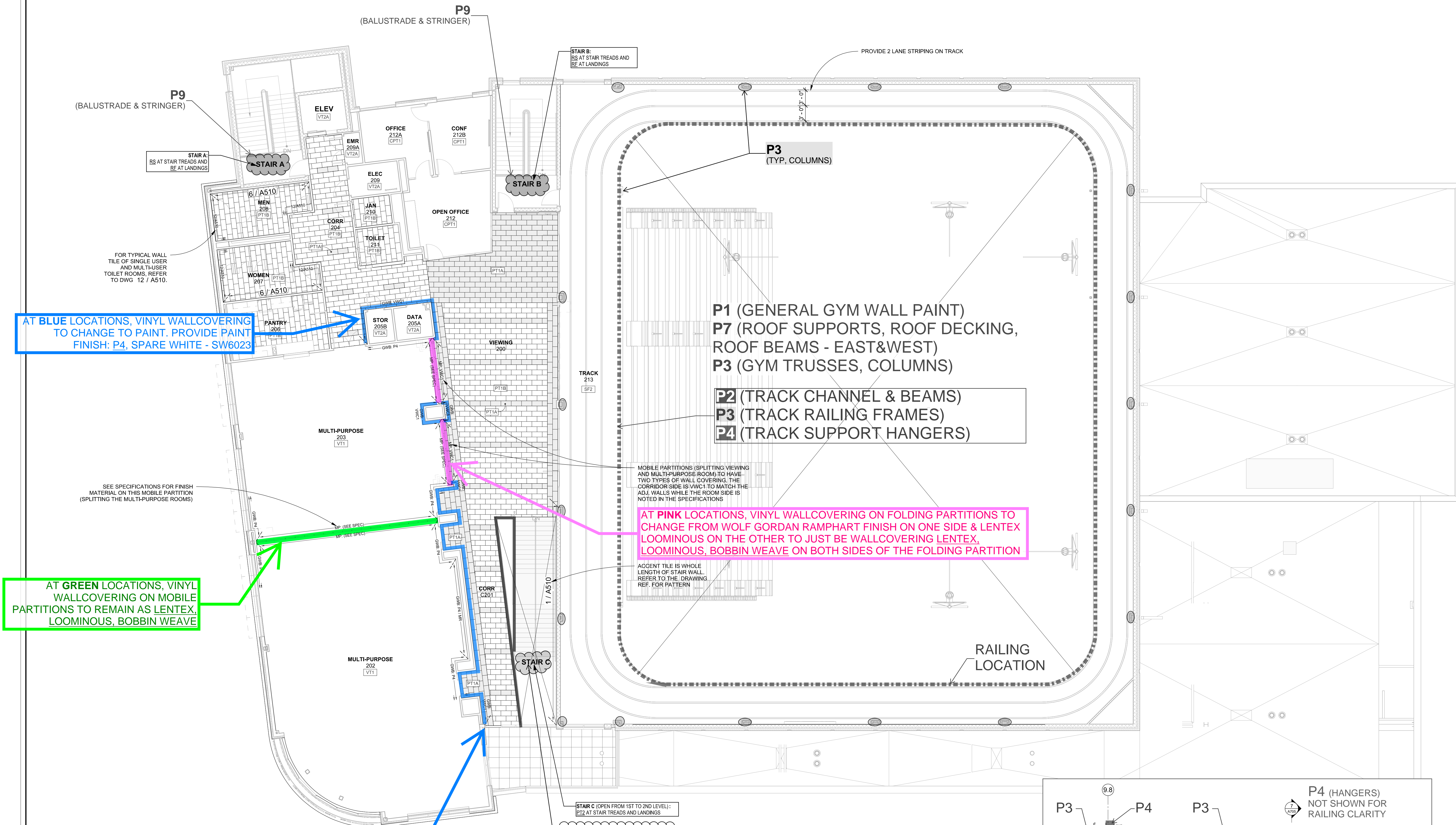
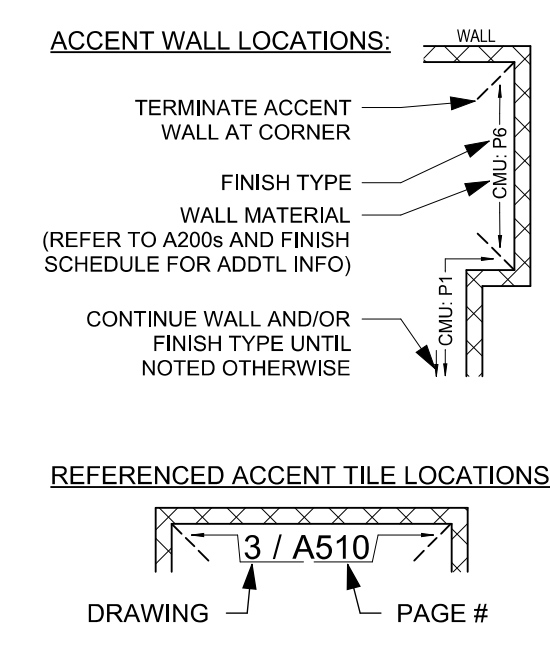
Job No. 2020-1005	Date 12/27/23
Scale AS NOTED	Drawn / Checked
Sheet Number	

**A502**



**FINISH PLAN LEGEND**

**LVT1** TAG INDICATES FLOOR FINISH TYPE.  
 FLOOR FINISH ORIENTATION (LENGTH TO FOLLOW ARROW)  
 NOTE: MORE FINISHES ARE NOTED THROUGHOUT THE DRAWINGS AS WELL AS ON THE FINISH SCHEDULE AND IN THE SPECIFICATIONS.



NOTE: ALL DESIGN, DESIGN ARRANGEMENTS AND PLANS INDICATED OR REPRESENTED BY THIS DRAWING ARE OWNED BY AND ARE THE PROPERTY OF KG+D ARCHITECTS, PC AND ARE NOT TO BE REPRODUCED OR USED FOR ANY PROJECT, NONE OF SUCH IDEAS, DESIGN, ARRANGEMENTS OR PLANS SHALL BE USED BY OR FOR ANY OTHER PROJECT WITHOUT THE WRITTEN PERMISSION OF KG+D ARCHITECTS, PC.

WRITTEN DIMENSIONS ON THIS DRAWING SHALL HAVE PRECEDENCE OVER SCALE DIMENSIONS. CONTRACTOR SHALL VERIFY ALL ACTUAL DIMENSIONS AND CONDITIONS ON THE JOB AND THE ARCHITECT MUST BE NOTIFIED OF ANY VARIATIONS FROM DIMENSIONS AND CONDITIONS SHOWN. SHOP DETAILS MUST BE SUBMITTED TO THIS OFFICE FOR APPROVAL BEFORE PROCEEDING WITH FABRICATION.

ALTERATIONS BY ANY PERSON IN ANY WAY OF ANY ITEM CONTAINED ON THIS DOCUMENT UNLESS ACTING UNDER THE DIRECTION OF THE LICENSED ARCHITECT WHOSE PROFESSIONAL SEAL IS AFFIXED HERETO IS A VIOLATION OF TITLE 18, SECTION 20.3(b) OF NEW YORK STATE LAW.  
 © COPYRIGHT KG+D ARCHITECTS, PC  
 ALL RIGHTS RESERVED.

Professional Seal

12/10/2023	SUBMITTAL 092000-004
4 06/05/2024	ISSUED FOR BID
3 01/16/2024	ISSUED FOR PERMIT
2 06/01/2020	DESIGN DEVELOPMENT
1 03/31/2020	50% DESIGN DEVELOPMENT

No. Date Issue

Sheet Title

**2nd FLOOR PLAN FINISH PLAN**

Job No. 2020-1005 Date 12/27/23  
 Scale AS NOTED Drawn / Checked --

Sheet Number

**A503**

