



**Highland Falls-Fort Montgomery Central School District
Additions & Alterations to Fort Montgomery Elementary School
SED Control No. 44-09-01-04-0-005-008
BCA Project No. 2022-138 PH1**

**Addendum No. 2
July 12, 2024**

This addendum is hereby made part of the Contract Documents as though it were originally included therein. It modifies the following documents:

Original Project Manual and Drawings dated 6/21/2024.
Addendum No. 1 dated 7/1/2024.

All Bidders must acknowledge receipt of this Addendum in the space provided on the Form of Proposal.

GENERAL CLARIFICATIONS:

1. Spec 275120-3.02, A - Are remote antennas required, if so, where should they be located?
ANSWER: Yes, Locate next to the clock.
2. Spec 275120-3.02, E - There is no DSP shown in the equipment list, only a mixer, is a DSP required? If so, what model?
ANSWER: No DSP Required.
2. Plan ES E202 Note P45 - What type of hardware is required? It is not mentioned in the spec.
ANSWER: This is for an HDMI connection from the wall to the sound system rack location for future projector connection to sound system.
3. Plan ES E202 Note P46 - What is to be installed in this box? The equipment list includes a Tascam receiver with built in blue tooth. Is additional hardware required?
ANSWER: This will end up being an empty box with conduit to Storage 102-2.
4. Plan ES E203 Note P38 - Where are these speakers to be mounted/aimed? Are the locations shown on the plan accurate? Should these be center mounted and directed outward?
ANSWER: Provide the Mb200 installation kit at a 40-degree angle to the floor. You are correct, the speakers should be in center cluster aimed outwards.
5. Is an ALS system required?
ANSWER: No ALS System.

NEW SPECIFICATION SECTIONS TO THE PROJECT MANUAL:

- A. **ADD** Specification Section 10 1400 *Signage*.

REVISIONS TO THE CONTRACT DRAWINGS:

- A. Refer to Drawing M400 *Controls Schematics*; **DELETE** in its entirety Detail No. 3 Kiln Hood Exhaust.
- B. Refer to Drawing M102 *Second Floor Ductwork Plan – Area C*; for note “32"x14" SA AND 32"x14" RA DUCT RISERS TO RTU-3 ON ROOF ABOVE”, **REPLACE** “RTU-3” to be “RTU-4”. Should read “32"x14" SA AND 32"x14" RA DUCT RISERS TO RTU-4 ON ROOF ABOVE”
- C. Refer to Drawing M400 *Control Schematics*; in Detail #2 “EXHAUST FAN – CONSTANT SPEED” and Detail #7 “KITCHEN EXHAUST HOOD & SUPPLY FAN SCHEMATIC,” **DELETE** “WIRE TO FAN MOTOR” note.
- D. Refer to Drawing M500 *Mechanical Details*; **REPLACE** Detail #4 with updated powered roof exhaust detail showing vertical-style motorized damper.
- E. Refer to Drawing M600 *Mechanical Equipment Schedules*; in “EXHAUST FAN SCHEDULE”, **ADD** note #7 to include motorized damper language (PRE-2,3,4,5,6).

NEW CONTRACT DRAWINGS:

- A. **ADD** Drawing A920 *SIGNAGE PLAN TYPES/LOCATIONS 1ST FL. AREA A, 2ND FL. AREA A & C*. (This drawing is to be added to the Cover Sheet Drawing Index).
- B. **ADD** Drawing A921 *SIGNAGE PLAN TYPES/LOCATIONS 1ST FL. AREA B*. (This drawing is to be added to the Cover Sheet Drawing Index).
- C. **ADD** Drawing A922 *Signage Types*. (This drawing is to be added to the Cover Sheet Drawing Index).

END OF ADDENDUM

Please do not hesitate to contact me with any questions on this addendum, thank you.

Respectfully Submitted,
BCA ARCHITECTS & ENGINEERS



John A. Sokol, RA
 Principal

SECTION 10 1400 SIGNAGE

PART 1 GENERAL

1.01 SECTION INCLUDES

- A. Room and door signs.
- B. Interior directional and informational signs.
- C. Emergency evacuation maps.
- D. Stair identification signs.
- E. Building identification signs.

1.02 REFERENCE STANDARDS

- A. The New York State Uniform Fire Prevention and Building Code 2020.
- B. The New York State Education Department Manual of Planning Standards for Educational Facilities, 2022.
- C. 36 CFR 1191 - Americans with Disabilities Act (ADA) Accessibility Guidelines for Buildings and Facilities; Architectural Barriers Act (ABA) Accessibility Guidelines; current edition.
- D. ADA Standards - 2010 ADA Standards for Accessible Design; 2010.
- E. ICC A117.1 - Accessible and Usable Buildings and Facilities; 2017.

1.03 SUBMITTALS

- A. See Section 01 3000 - Administrative Requirements, for submittal procedures.
- B. Product Data: Manufacturer's printed product literature for each type of sign, indicating sign styles, font, foreground and background colors, locations, overall dimensions of each sign.
- C. Signage Schedule: Provide information sufficient to completely define each sign for fabrication, including room number, room name, other text to be applied, pictograms, window inserts, copy position, graphic process, mounting location, mounting method, sign and letter sizes, fonts, and colors. Segregate signage schedule by building, floor, wing and area.
 - 1. When room numbers to appear on signs differ from those on drawings, include the drawing room number on schedule.
 - 2. When content of signs is indicated to be determined later, request such information from Owner through Architect at least 2 months prior to start of fabrication; upon request, submit preliminary schedule.
 - 3. Submit for approval by Owner through Architect prior to fabrication.
- D. Samples: Submit one sample of each type of sign, of size similar to that required for project, illustrating sign style, font, and method of attachment.
- E. Selection Samples: Where colors are not specified, submit two sets of color selection charts or chips.
- F. Verification Samples: Submit samples showing colors specified.
- G. Manufacturer's Installation Instructions: Include installation templates and attachment devices.
- H. Manufacturer's Qualification Statement.

1.04 QUALITY ASSURANCE

- A. Manufacturer Qualifications: Company specializing in manufacturing the products specified in this section with minimum five years of documented experience.

1.05 DELIVERY, STORAGE, AND HANDLING

- A. Package signs as required to prevent damage before installation.
- B. Package room and door signs in sequential order of installation, labeled by floor or building.
- C. Store tape adhesive at normal room temperature.

1.06 FIELD CONDITIONS

- A. Do not install the sign units until all other finishing operations, including painting, have been completed unless otherwise directed.
- B. Do not install tape adhesive when ambient temperature is lower than recommended by manufacturer.
- C. Maintain this minimum temperature during and after installation of signs.

PART 2 PRODUCTS

2.01 MANUFACTURERS

- A. Flat Signs:
 - 1. Basis of Design: Mohawk Sign Systems, Inc; Series 200A, Sand-carved: www.mohawksign.com/#sle.
 - 2. Substitutions: See Section 01 6000 - Product Requirements.
- B. Dimensional Letter Signs:
 - 1. Basis of Design: Gemini; Flat Cut Metal Letters.
 - 2. Substitutions: See Section 01 6000 - Product Requirements.

2.02 SIGNAGE APPLICATIONS

- A. Accessibility Compliance: Signs are required to comply with ADA Standards and ICC A117.1 2017, unless otherwise indicated; in the event of conflicting requirements, comply with the most comprehensive and specific requirements.
- B. Room and Door Signs: Provide a sign for each doorway in the new building or area of renovation as indicated on drawings.
 - 1. Sign Type: Flat signs with engraved panel media as specified with window inserts by Owner.
 - 2. Sign Size: as noted on Sheet A922.
 - 3. Provide "tactile" signage, with letters raised minimum 1/32 inch and Grade II braille.
 - a. Tactile characters shall be raised 1/32 inches from the sign face.
 - b. Glue-on letter or etched backgrounds are not acceptable.
 - c. Refer to signage types on drawings.
 - 4. Character Height: 1 inch.
 - 5. Classroom Signs:
 - a. Sign Size: 8 inches x 8 inches with single window insert.
 - b. Owner to provide window inserts.
 - 6. Office Doors: Identify with room numbers to be determined later, not the numbers indicated on drawings; in addition, provide "window" section for replaceable occupant name.
 - a. Sign Size: 8" x 8".
 - 7. Service Rooms: Identify with room names and numbers to be determined later, not those indicated on drawings.
 - a. Doors into electrical control panel rooms shall have signs stating: ELECTRICAL ROOM or similar approved wording.
 - 8. Stair Doors: Identify sign stating: "STAIR" and include a stair pictogram. Include unique stair identifiers when provided to differentiate the stairs.
 - a. Sign Size: as shown on drawings.
 - 9. Rest Rooms: Identify with pictograms, room numbers to be determined later, and braille.
 - a. Restroom and Locker room Sign Dimensions: Minimum 8" x 8" with New York State 4" accessibility symbol, gender symbol and verbal description. Grade 2 braille to follow directly below the text.
 - 1) Gender Neutral Single Occupancy Toilet Room Signage: provide gender neutral single-occupancy toilet room signage in accordance with New York State Education Law Section 409-m.

- 2) Gender Neutral signage to comply with the New York State Building Code 2020, Section 2902.4 Signage and ANSI A117.1 Standards.
 - 3) Gender Neutral signage location to be coordinated during shop drawing phase.
- C. Interior Directional and Informational Signs:
1. Sign Type: Same as room and door signs.
 2. Provide directional signs at inaccessible drinking fountains for persons using wheelchairs and drinking fountains for standing persons are not located adjacent to each other as indicated on the Signage Plan.
 3. Provide directional signs at inaccessible restrooms and bathing facilities as indicated on the Signage Plan.
 4. Provide directional signs at elevators not serving an accessible route as indicated on the Signage Plan.
 5. Provide directional signs at exits serving required accessible spaces that do not have approved accessible means of egress as indicated on the Signage Plan.
- D. Emergency Evacuation Maps:
1. Allow for one map per elevator lobby floor.
 2. Map content to be provided by Owner indicating building floor plan, exit routes (primary and secondary), accessible egress routes (areas of refuge and exterior areas of assisted rescue), manual pull stations, portable fire extinguishers, fire extinguisher cabinets, occupant-use hose stations, fire alarm annunciators and controls, and current location (you are here).
 3. Comply with the New York State Building Code 2020, Section 3008.1.3 Fire Safety and Evacuation Plan and Fire Code 2020, Section 404.2.2 Fire Safety Plans item 4.
 4. Sign Type: Use clear plastic panel silk-screened on reverse, in brushed aluminum frame, screw-mounted.
 5. Sign Size: 12 inches x 12 inches.
- E. Building Identification Signs:
1. Use individual metal letters.
 2. Mount on outside wall in location indicated on drawings.
- F. Room Occupancy Signs:
1. Room Occupancy signs shall state: MAXIMUM OCCUPANCY # PERMITTED and the number (#) of occupants permitted within the space.
 - a. Comply with The State Education Department, Educational Facilities Manual of Planning Standards.
 - b. Comply with the New York State Building Code 2020, Section 1004.9.
 - c. Place sign near the main exit or exit access doorway from the room or space and as directed by the Owner & Architect.
 - d. Sign Type: Same as room and door signs.
 - e. Sign Size: 12 inches x 7 inches.
 - f. Coordinate with Owner & Architect during shop drawing phase.
- G. Stairway Identification Signs:
1. Provide signs at each floor landing in an interior stairway and ramp connecting more than three stories designating the floor level, the terminus of the top and bottom of the interior exit stairway and ramp and the identification of the stairway or ramp. The signage shall state the story of and the direction to the exit discharge, and the availability of roof access from the interior exit stairway and ramp for the fire department.
 2. In addition to the stairway identification signs, a floor-level sign in visual characters, raised characters and braille shall be located at each floor-level landing adjacent to the door leading from the interior exit stairway and ramp into the corridor to identify the floor level.
 - a. Sign Type: Same as room and door signs.
 - b. Sign Size: 8 inches x 3 inches.
 3. Comply with the New York State Building Code 2020, Section 1023.9.

- H. Exit Door Signs:
 - 1. Provide tactile signs at exit passageway doors, exit discharge doors, exit doors leading directly to the exterior, horizontal exits, exit stairways and exit ramp doors.
 - 2. Comply with ADA 216.4.1 Exit Doors and ANSI 117.1 section 504.9.
 - 3. Sign Type: Same as room and door signs.
 - 4. Sign Size: 6 inches x 6 inches.
- I. Area of Refuge Signs:
 - 1. Provide Area of Refuge signs at each door providing access to an area of refuge from an adjacent floor area by sign stating: AREA OF REFUGE. Include NYS Symbol of Accessibility pictogram as indicated on the Signage Plan.
 - 2. Instructions: Provide Area of Refuge and Exterior Area for Assisted Rescue instructions at each call box/station. Comply with the New York State Building Code 2020, Section 1009.11 and as indicated on the Signage Plan.
 - 3. Sign Size: Area of Rescue - 6 inches x 9 inches.
 - 4. Sign Size: Exterior Area for Assisted Rescue - 6 inches x 12 inches.
 - 5. Comply with the New York State Building Code 2020, Section 1009.9.
- J. Accessible Entrance Signs:
 - 1. Provide signs with NYS Symbol of Accessibility at accessible entrances where not all entrances are accessible as indicated on the Signage Plan.
 - 2. Provide directional signs with NYS Symbol of Accessibility indicating the route to the nearest accessible building entrance at all non accessible building entrance as indicated on the Signage Plan.
 - 3. Provide directional signs with NYS Symbol of Accessibility indicating the route to the accessible exit as indicated on the Signage Plan.
 - 4. Sign Type: Same as room and door signs.
 - 5. Sign Size: 6 inches x 8 inches.
 - 6. Comply with the New York State Building Code 2020, Section 1111.1.
- K. Delayed Egress Locking System Signs:
 - 1. Provide signs to be placed on the doors with delayed egress locking systems and shall be located above and within 12 inches of the door exit hardware as indicated on the Signage Plan.
 - 2. Comply with the New York State Building Code 2020, Section 1010.1.9.8.1 (6).
 - 3. For doors that swing in the direction of egress, the sign shall read: PUSH UNTIL ALARM SOUNDS. DOOR CAN BE OPENED IN 15 SECONDS.
 - 4. For doors that swing in the opposite direction of egress, the sign shall read: PULL UNTIL ALARM SOUNDS. DOOR CAN BE OPENED IN 15 SECONDS.
 - 5. Sign Type: Permanent, non-fading vinyl sticker or decal.
- L. Electrical Room Signs:
 - 1. Provide signs to electrical rooms.
 - 2. Comply with the New York State Fire Code 2020, Section 604.3.1.
 - 3. Sign Type: Same as room and door signs
- M. Truss Identification Signs:
 - 1. Provide truss identification signs at newly constructed buildings or existing building additions that utilize truss type construction as defined in the New York State Building Code 2020, Section 102.2.1 (3), 19 NYCRR Part 1264 Identification of Buildings Utilizing Truss Type Construction.
 - 2. Signs Application:
 - a. Signs applied to doors or sidelights: Permanent non-fading sticker or decal.
 - b. Signs not directly applied to doors or sidelights: Sturdy, non-fading, aluminum.
 - 3. Locate signs in accordance with 19 NYCRR Part 1264, Table I-1264:

- a. Exterior building entrance doors, exterior exit discharge doors, exterior roof access doors to stairways. Attach sign to the door, or attached to a sidelight or the face of the building, not more than 12 inches horizontally from the latch side of the door jamb, and not less than 42 inches nor more than 60 inches above the adjoining walking surface.
 - b. Multiple contiguous exterior building entrance or exit discharge doors. Attach sign at each end of row of doors and at a maximum horizontal distance of 12 feet between signs, and not less than 42 inches or more than 60 inches above the adjoining walking surface.
- N. Fire Extinguisher Signs: Provide required sign at each fire extinguisher location in the building.
- O. Rescue Window signs: Provide stickers at window locations shown on plans.

2.03 SIGN TYPES

- A. Flat Signs: Signage media without frame.
- 1. Edges: Square.
 - 2. Corners: Radiused.
 - 3. Clear Cover: For customer produced sign media, provide clear cover of polycarbonate plastic, glossy on back, non-glare on front.
 - 4. Wall Mounting of One-Sided Signs: Concealed screws at exterior signage and vinyl tape at interior signs.
- B. Color and Font: Unless otherwise indicated:
- 1. Character Font: Helvetica, Arial, or other sans serif font.
 - 2. Character Case: Upper case only.
 - 3. Background Color: as selected by Architect.
 - 4. Character Color: Contrasting color.

2.04 TACTILE SIGNAGE MEDIA

- A. Engraved Panels: Laminated colored plastic; engraved through face to expose core as background color:
- 1. Total Thickness: 1/8 inch.
 - 2. Material: Plaque material shall be melamine plastic laminate with contrasting core color.
 - a. The melamine shall be non-static, fire-retardant and self-extinguishing.
 - 1) Flame Spread: Less than 25.
 - 2) Smoke Developed Values: 95-120
 - 3) Auto Ignition Temperature: Greater than 450 degrees F.
 - b. The plastic laminate is to be impervious to most acids, alkalies, alcohol, solvents, abrasives and boiling water.

2.05 NON-TACTILE SIGNAGE MEDIA

- A. Silk Screened Plastic Panels: Letters and graphics silk screened onto reverse side of plastic surface:
- 1. Sign Color: Clear.
 - 2. Total Thickness: 1/8 inch.

2.06 DIMENSIONAL LETTERS

- A. Metal Letters:
- 1. Metal: Aluminum sheet, flat.
 - 2. Metal Thickness: 1/4 inch minimum.
 - 3. Letter Height: 8 inches.
 - 4. Text and Typeface: "CAFENASIUM". Location above double doors to be verified in field.
 - a. Character Font: Helvetica, Arial, or other sans serif font.
 - b. Character Case: Upper case only.
 - 5. Finish: Clear anodized.
 - 6. Product: Basis of Design: Gemini Flat Cut Metal Letters.

7. Mounting: Concealed screws.

2.07 ACCESSORIES

- A. Concealed Screws: Stainless steel, galvanized steel, chrome plated, or other non-corroding metal.
- B. Tape Adhesive: Double sided tape, permanent adhesive.

PART 3 EXECUTION

3.01 EXAMINATION

- A. Verify that substrate surfaces are ready to receive work.

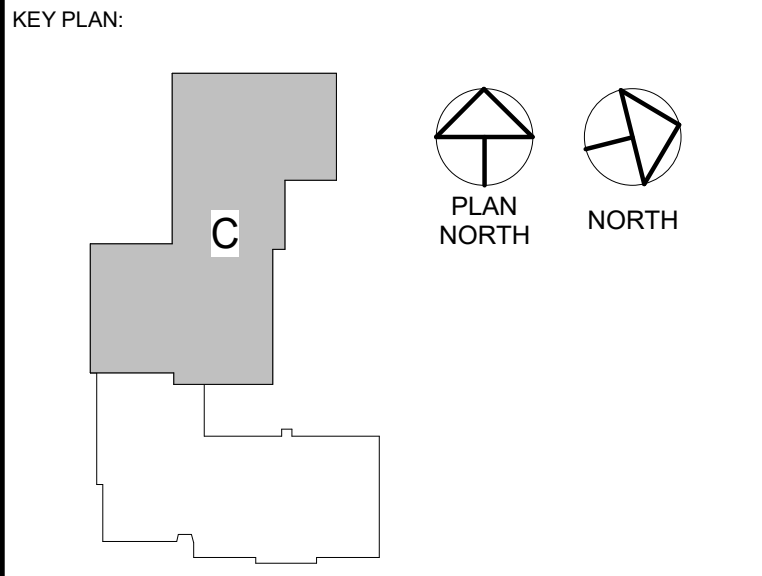
3.02 INSTALLATION

- A. Install in accordance with manufacturer's instructions.
- B. Install neatly, with horizontal edges level.
- C. Locate signs and mount at heights indicated on drawings and in accordance with ADA Standards and ICC A117.1.
- D. Protect from damage until Date of Substantial Completion; repair or replace damaged items.

END OF SECTION

GENERAL NOTES:
 1. SEE DRAWING MS000 FOR GENERAL NOTES, ABBREVIATIONS, SYMBOLS AND LEGENDS

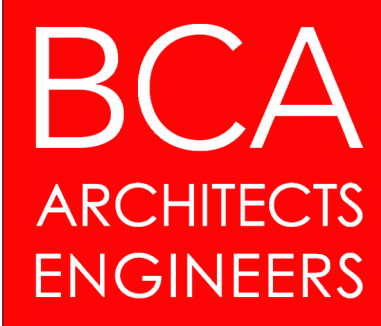
- KEYNOTE LEGEND**
1. PROVIDE VRF CEILING CASSETTE, REFRIGERATION PIPING, CONTROLS, AND ALL ASSOCIATED ACCESSORIES. PROVIDE REMOTE TEMPERATURE CONTROLLER BY MANUFACTURER AND SPACE TEMPERATURE SENSOR TO MONITOR ROOM TEMPERATURE. COORDINATE WITH EC TO PROVIDE POWER. INSTALL PER MANUFACTURER'S RECOMMENDATIONS.
 2. PROVIDE WALL MOUNTED ELECTRIC UNIT HEATER, CONTROLS, AND ALL ASSOCIATED ACCESSORIES. PROVIDE SUPPORTS TO MOUNT UNIT TO WALL. COORDINATE WITH EC TO PROVIDE POWER. INSTALL PER MANUFACTURER'S RECOMMENDATIONS.
 3. PROVIDE WALL MOUNTED COOLING ONLY UNIT, REFRIGERATION PIPING, CONTROLS, AND ALL ASSOCIATED ACCESSORIES. PROVIDE SUPPORTS TO MOUNT UNIT TO WALL. COORDINATE WITH EC TO PROVIDE POWER. INSTALL PER MANUFACTURER'S RECOMMENDATIONS.
 4. PROVIDE DUCT MOUNTED ELECTRIC COIL, CONTROLS, AND ALL ASSOCIATED ACCESSORIES. COORDINATE WITH EC TO PROVIDE POWER. INSTALL PER MANUFACTURER'S RECOMMENDATIONS.



THIS SHEET INCORPORATES COLOR GRAPHICS WHICH INDICATE IMPORTANT INFORMATION AND SHALL BE PRINTED IN COLOR IF REPRODUCED BY A CONTRACTOR.

BCA Architects & Engineers
 Watertown | Ithaca | Saratoga Springs | Rochester
 WWW.THEBCAGROUP.COM

COPYRIGHT © 2022, BCA ARCHITECTS & ENGINEERS. WARNING - IT IS A VIOLATION OF THE NEW YORK STATE EDUCATION LAW FOR ANY UNAUTHORIZED ALTERATIONS TO THIS DOCUMENT AS PER ARTICLE 145 AND 147.

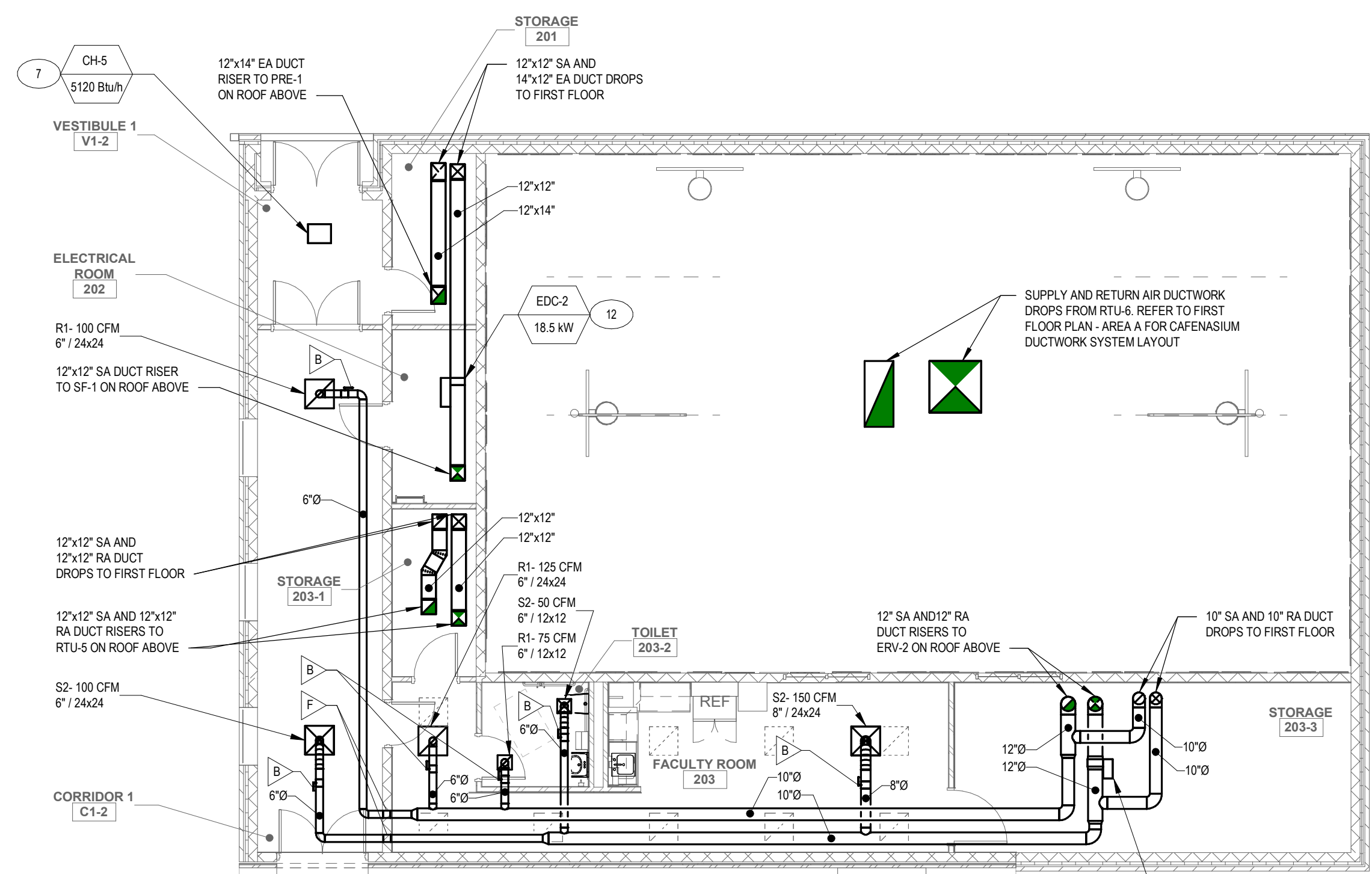


HIGHLAND FALLS-FORT MONTGOMERY CSD
 ALTERATIONS AND ADDITIONS TO:
 FORT MONTGOMERY ELEMENTARY SCHOOL
 HIGHLAND FALLS - ORANGE COUNTY - NEW YORK

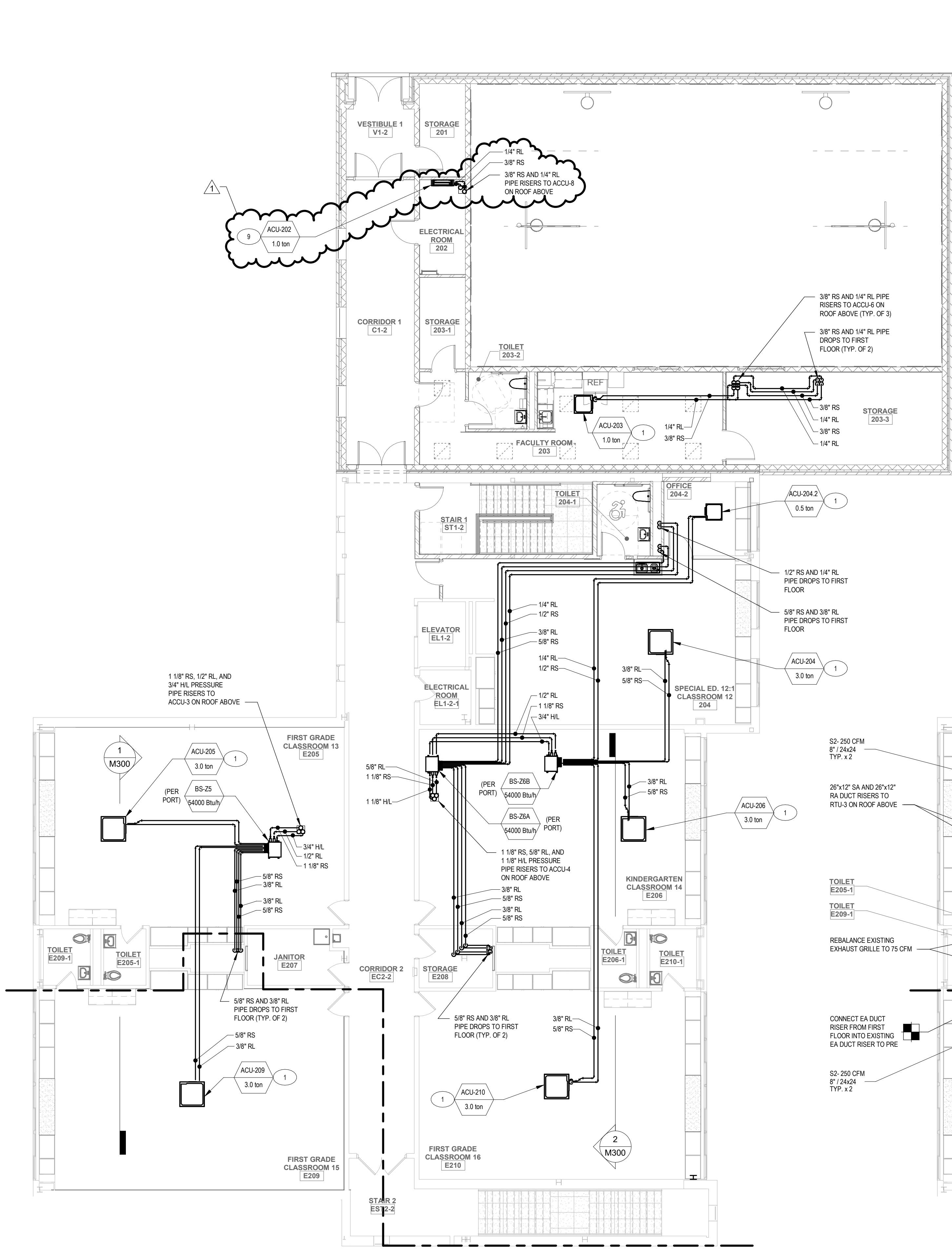
| | |
|------------|-----------------|
| REV DATE | DESCRIPTION |
| 07/11/2024 | BID ADDENDUM #2 |
| DRAWN BY | PROJECT NUMBER |
| JVG/DK | 2022-138 |
| CHECKED BY | DATE |
| JLM | 07/10/2024 |

SECOND FLOOR PLAN - AREA C

BUILDING NUMBER SHEET NUMBER
ES M102

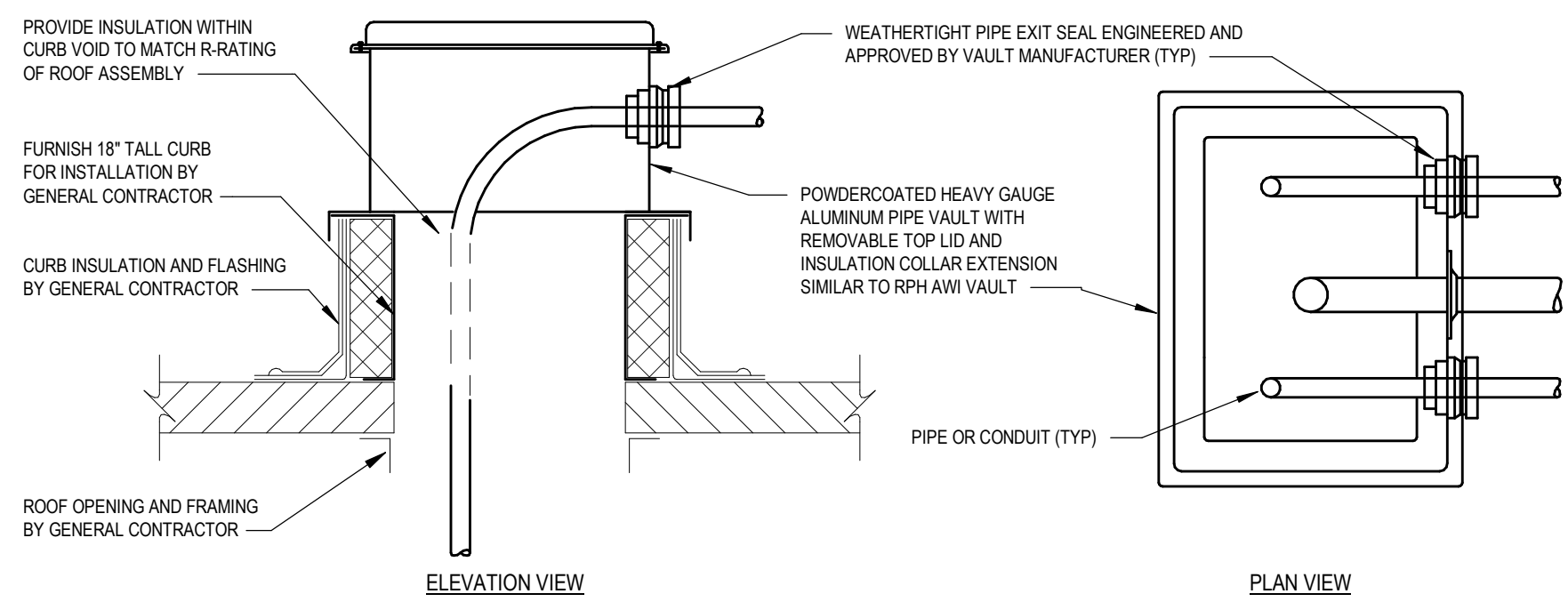


1 SECOND FLOOR DUCTWORK PLAN - AREA C
 SCALE: 1/8" = 1'-0"



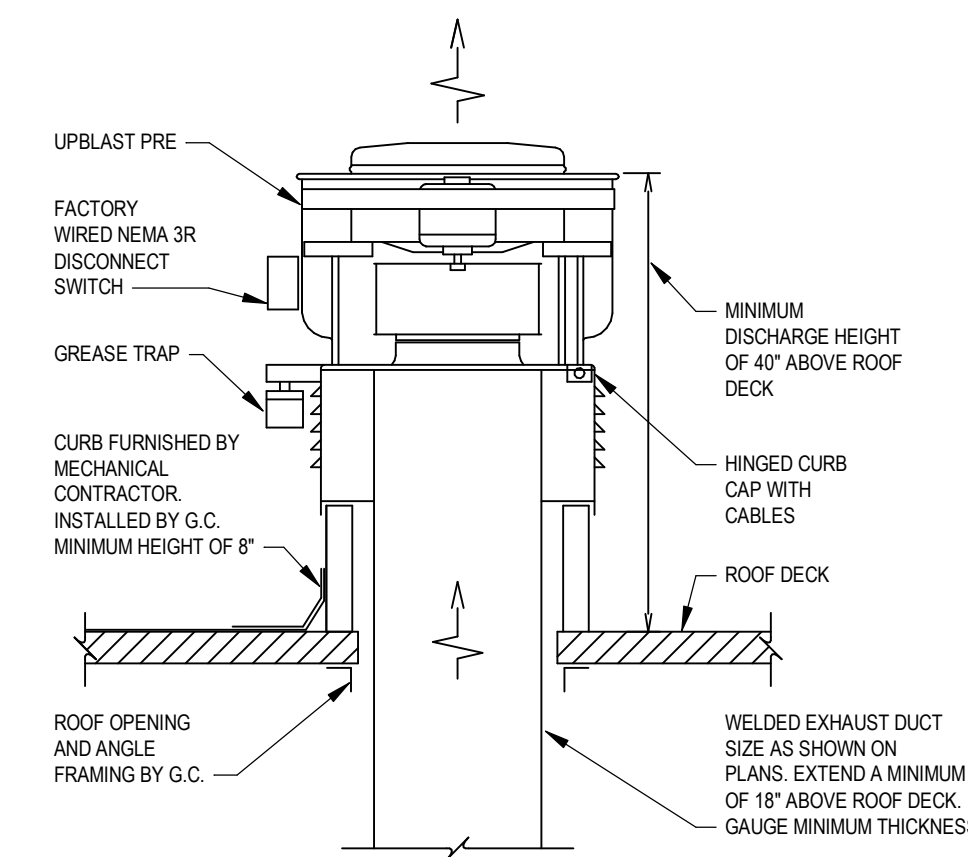
2 SECOND FLOOR PIPING PLAN - AREA C
 SCALE: 1/8" = 1'-0"

7/10/2024 9:18:35 AM

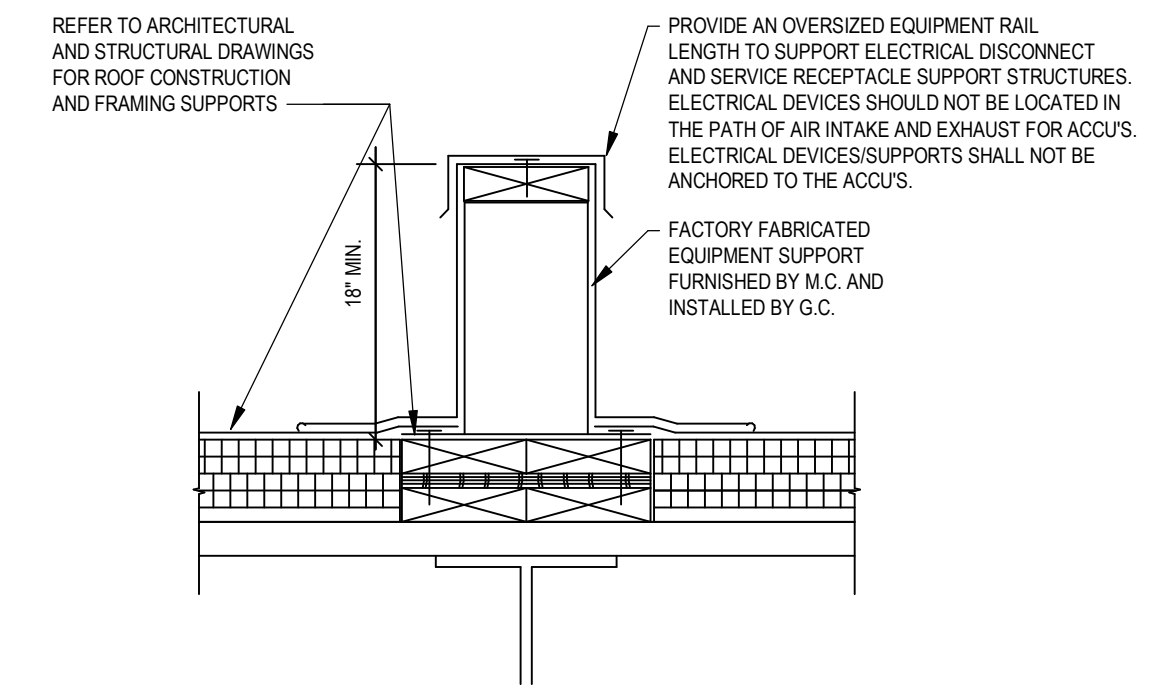


NOTES:
 1. MECHANICAL CONTRACTOR TO FURNISH CURB AND PIPE VAULT TO GENERAL CONTRACTOR FOR INSTALLATION AND FLASHING. INSTALLATION OF PIPE PENETRATIONS AND INTERNAL INSULATION BY MECHANICAL CONTRACTOR. SEE ARCHITECTURAL DRAWINGS FOR ADDITIONAL INFORMATION.
 2. COORDINATE REQUIRED QUANTITY OF PIPE AND CONDUIT PENETRATIONS WITH ASSOCIATED EQUIPMENT AND ELECTRICAL CONTRACTOR. PROVIDE VAULT AND CURB SIZED FOR, OR EXCEEDING THIS QUANTITY OF PENETRATIONS. COORDINATE REQUIRED SIZE AND INSTALL ASSOCIATED SEAL(S) FOR POWER AND CONTROL CONDUIT.

9 ROOF PIPE PENETRATION VAULT DETAIL
 SCALE: NOT TO SCALE

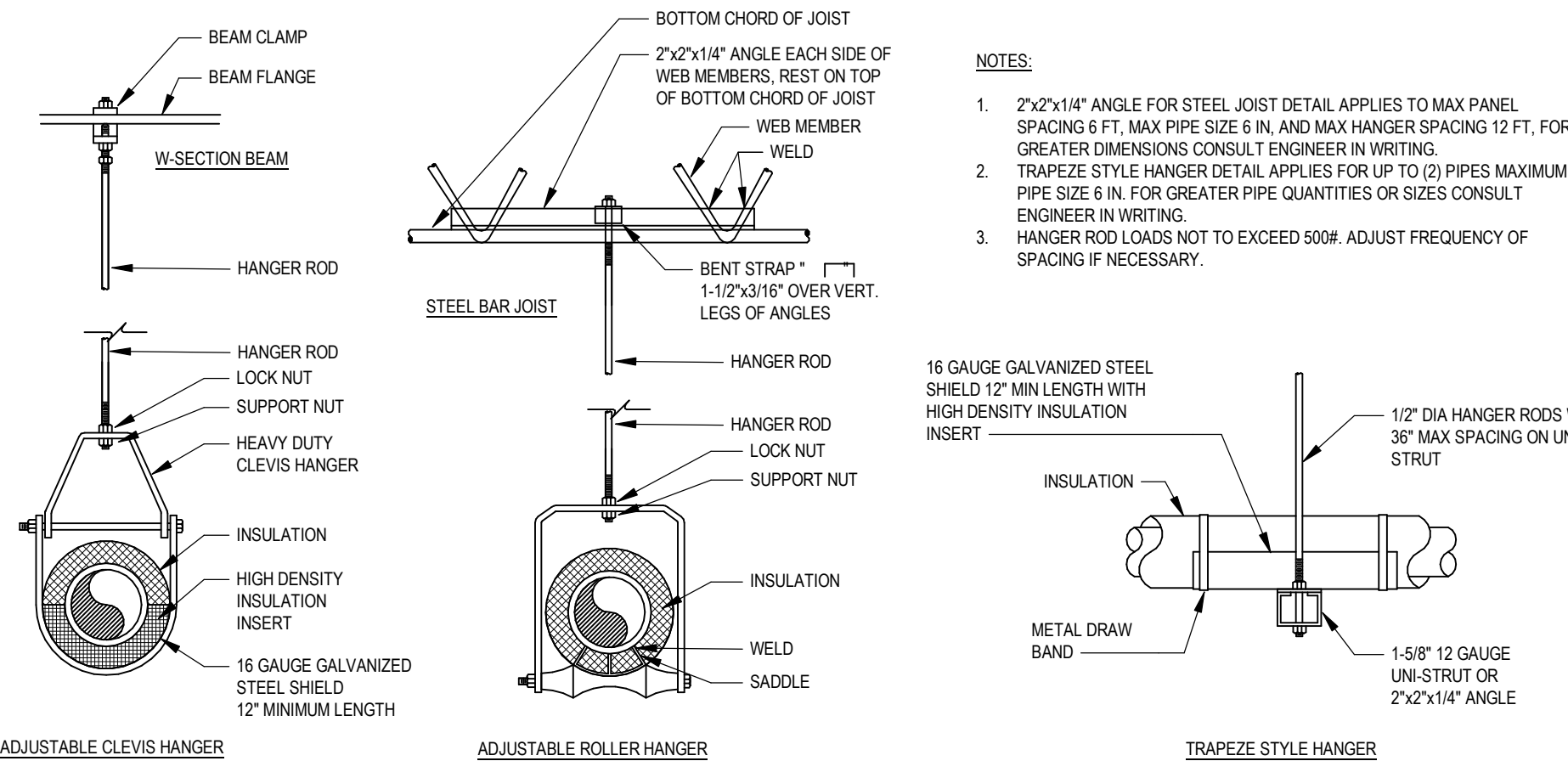


5 KITCHEN POWER ROOF EXHAUSTER DETAIL
 SCALE: NOT TO SCALE



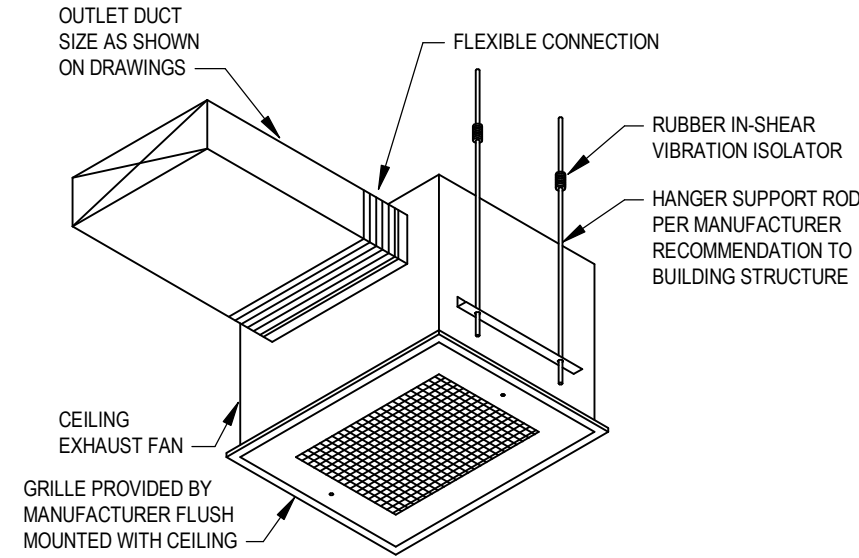
NOTES:
 1. COORDINATE LOCATION OF ROOF SUPPORTS WITH CONTRACTOR RESPONSIBLE FOR STRUCTURAL STEEL SUPPORTS.

1 ROOF EQUIPMENT SUPPORT DETAIL
 SCALE: NOT TO SCALE

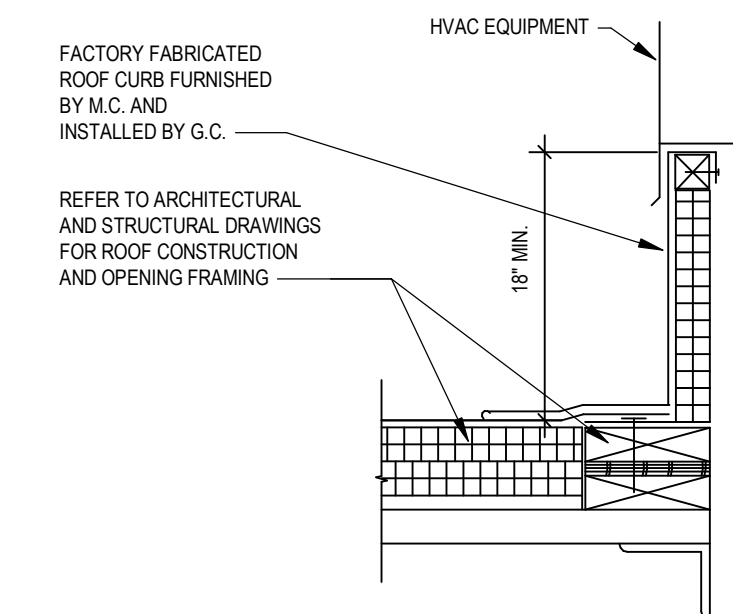


NOTES:
 1. 2"x2"x1/4\"/>

10 PIPE HANGER DETAILS
 SCALE: NOT TO SCALE

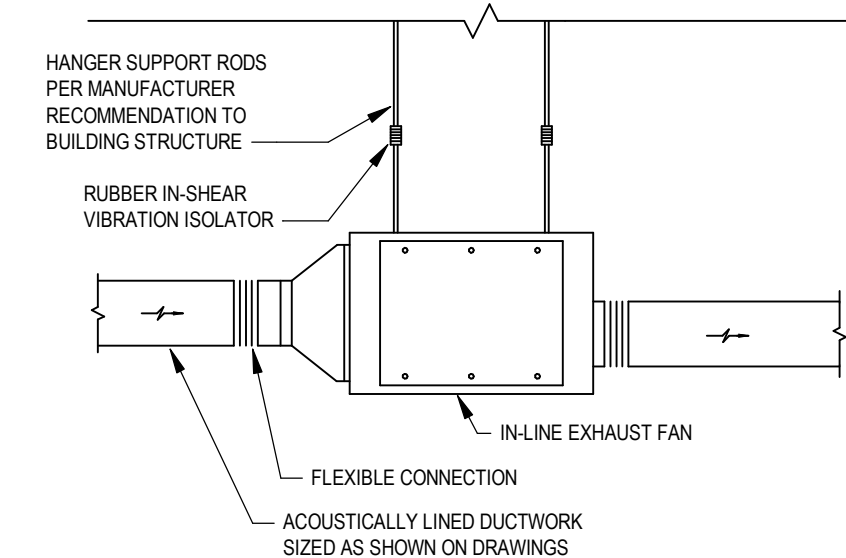


6 CEILING EXHAUST FAN DETAIL
 SCALE: NOT TO SCALE

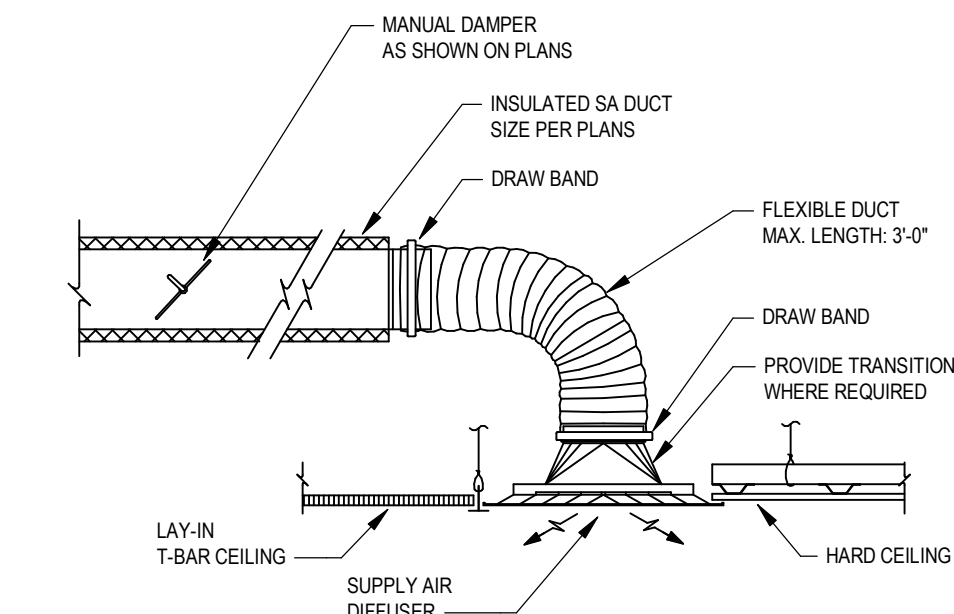


NOTE:
 1. COORDINATE ROOF OPENING LOCATION AND SIZE WITH CONTRACTOR RESPONSIBLE FOR ROOFING WORK AND FOR STRUCTURAL STEEL SUPPORTS.

2 ROOF CURB DETAIL
 SCALE: NOT TO SCALE

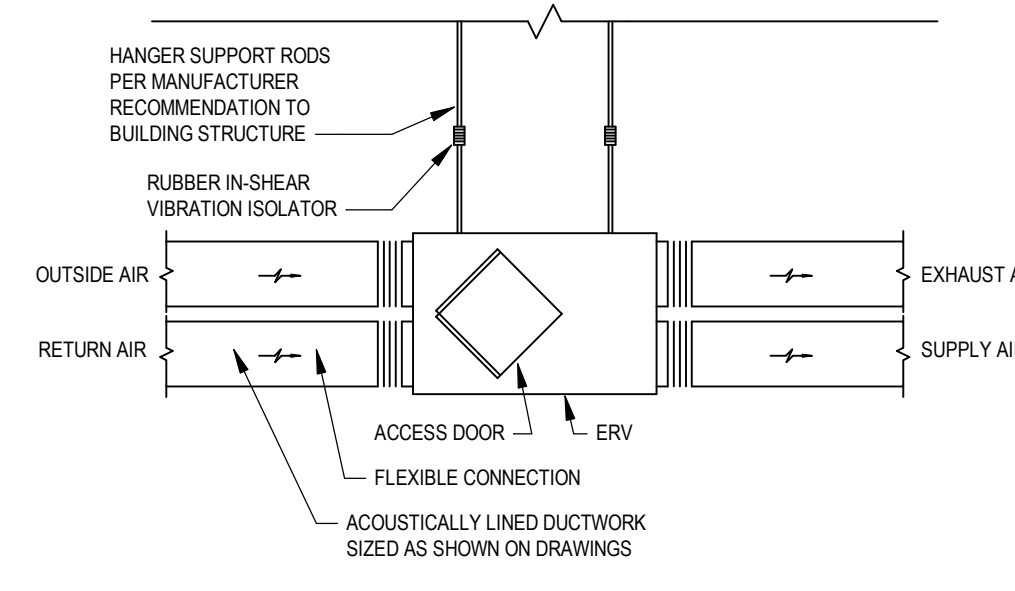


7 IN-LINE EXHAUST FAN DETAIL
 SCALE: NOT TO SCALE

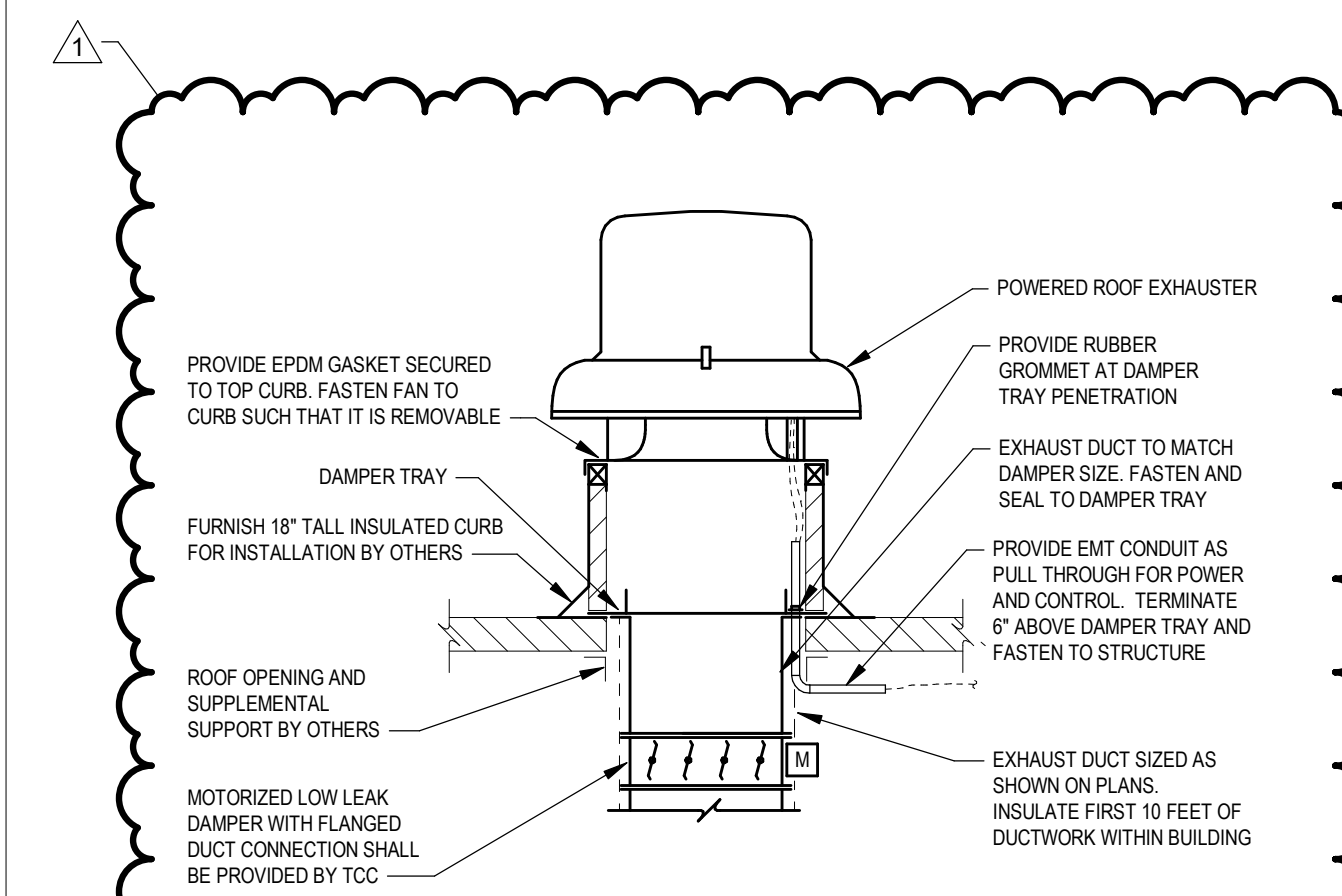


NOTE:
 1. PROVIDE DIFFUSER WITH APPROPRIATE BORDER CONFIGURATION TO ACCOMMODATE INSTALLATION IN CORRESPONDING CEILING TYPES.

3 CEILING DIFFUSER DETAIL
 SCALE: NOT TO SCALE



8 CEILING HUNG ERV DETAIL
 SCALE: NOT TO SCALE



4 POWER ROOF EXHAUSTER DETAIL
 SCALE: NOT TO SCALE

SED NO. 44-09-01-04-0-005-008
 THIS SHEET INCORPORATES COLOR GRAPHICS WHICH INDICATE IMPORTANT INFORMATION AND SHALL BE PRINTED IN COLOR IF REPRODUCED BY A CONTRACTOR.
BCA Architects & Engineers
 Watertown | Ithaca | Saratoga Springs | Rochester
 WWW.THEBCAGROUP.COM
 COPYRIGHT © 2022. BCA ARCHITECTS & ENGINEERS. WARNING - IT IS A VIOLATION OF THE NEW YORK STATE EDUCATION LAW FOR ANY UNAUTHORIZED ALTERATIONS TO THIS DOCUMENT AS PER ARTICLE 145 AND 147.



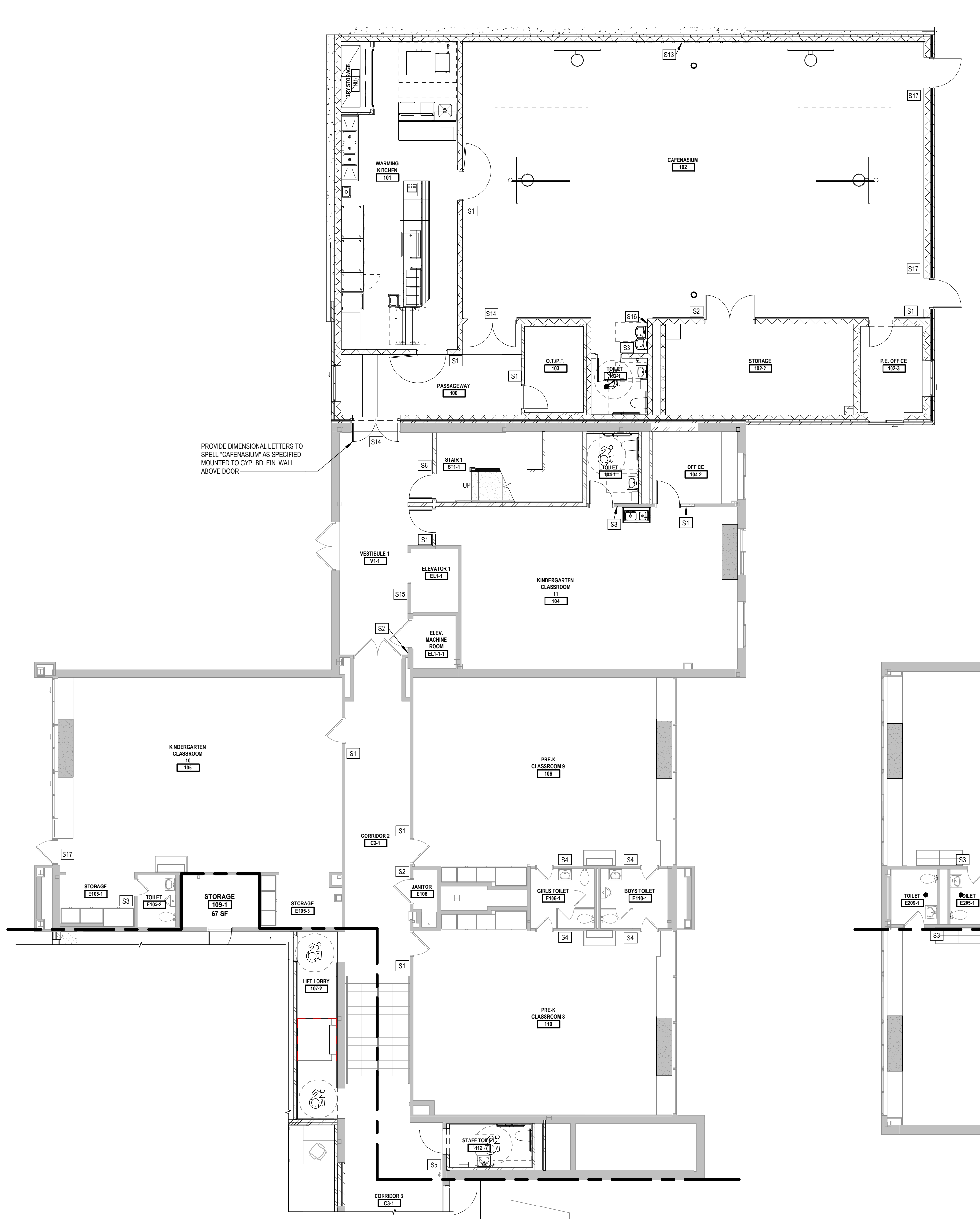
HIGHLAND FALLS-FORT MONTGOMERY CSD
 ALTERATIONS AND ADDITIONS TO:
 FORT MONTGOMERY ELEMENTARY SCHOOL
 HIGHLAND FALLS - ORANGE COUNTY - NEW YORK

| | |
|--------------------------------|--------------------------------|
| REV DATE 07/11/2024 | DESCRIPTION BID ADDENDUM #2 |
| DRAWN BY JVJ/DK 2022-138 | PROJECT NUMBER 2022-138 |
| CHECKED BY JLM | DATE 07/10/2024 |

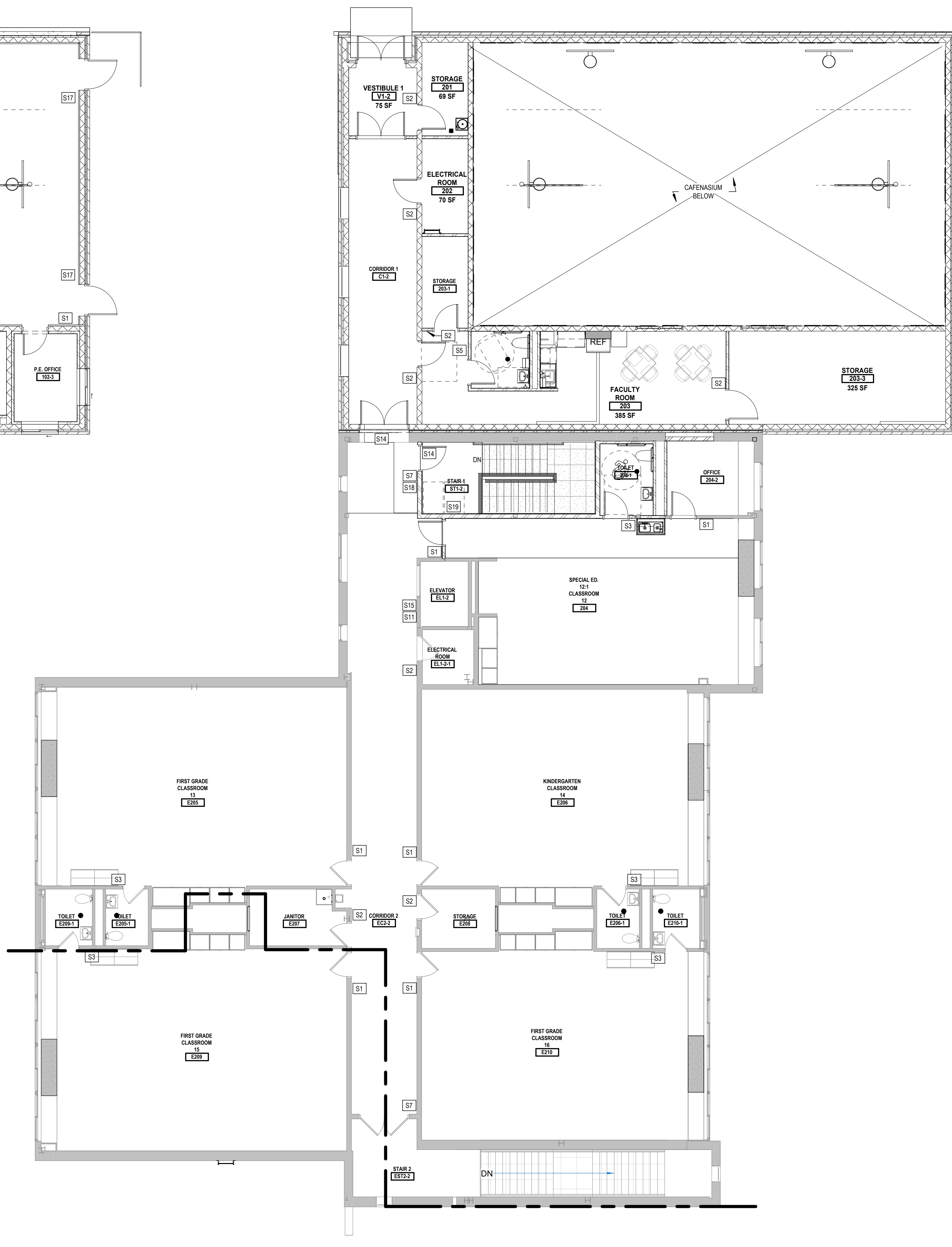
MECHANICAL DETAILS

BUILDING NUMBER SHEET NUMBER
ES M500

7/12/2024 10:23:14 AM



1 FIRST FLOOR SIGNAGE PLAN - AREA A
SCALE: 1/8" = 1'-0"

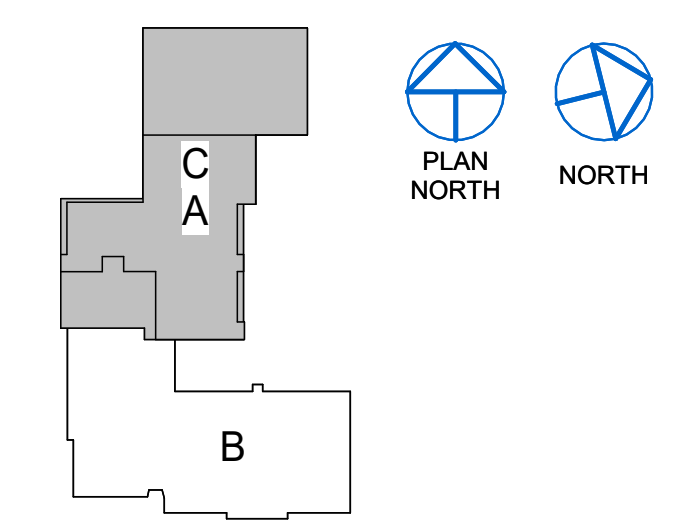


2 SECOND FLOOR SIGNAGE PLAN - AREA C
SCALE: 1/8" = 1'-0"

SIGN TYPES KEY

| TYPE | DESCRIPTION |
|------|--|
| S1 | TYPICAL CLASSROOM OR OFFICE |
| S2 | CLOSET, STORAGE, ELECTRICAL ROOM, ETC. |
| S3 | GENDER NEUTRAL RESTROOM |
| S4 | WOMEN'S, MENS, BOYS OR GIRLS |
| S5 | STAFF GENDER NEUTRAL RESTROOM |
| S6 | STAIRS |
| S7 | EXIT STAIR |
| S8 | ACCESSIBLE LIFT |
| S9 | ACCESSIBLE EXIT |
| S10 | ACCESSIBLE ENTRANCE |
| S11 | EMERGENCY EVACUATION ROUTE |
| S12 | SCHOOL VISITORS NOTICE |
| S13 | MAXIMUM OCCUPANCY |
| S14 | DOOR ALARM |
| S15 | DO NOT USE ELEVATOR IN CASE OF FIRE |
| S16 | DRINKING FOUNTAIN |
| S17 | EXIT |
| S18 | AREA OF REFUGE |
| S19 | PUSH FOR HELP |

KEY PLAN:

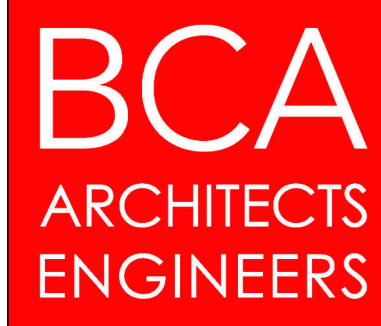


SED NO. 44-09-01-04-0-005-008

THIS SHEET INCORPORATES COLOR GRAPHICS WHICH INDICATE IMPORTANT INFORMATION AND SHALL BE PRINTED IN COLOR IF REPRODUCED BY A CONTRACTOR.

BCA Architects & Engineers
Watertown | Ithaca | Saratoga Springs | Rochester
WWW.THEBCAGROUP.COM

COPYRIGHT © 2022 - BCA ARCHITECTS & ENGINEERS. WARNING - IT IS A VIOLATION OF THE NEW YORK STATE EDUCATION LAW FOR ANY UNAUTHORIZED ALTERATIONS TO THIS DOCUMENT AS PER ARTICLE 145 AND 147.



HIGHLAND FALLS-FORT MONTGOMERY CSD
ALTERATIONS AND ADDITIONS TO:
FORT MONTGOMERY ELEMENTARY SCHOOL
HIGHLAND FALLS - ORANGE COUNTY - NEW YORK

| REV | DATE | DESCRIPTION |
|-----|------------|-----------------|
| 2 | 07/12/2024 | BID ADDENDUM #2 |

| DRAWN BY | PROJECT NUMBER |
|------------|----------------|
| LEW | 2022-138 PH1 |
| CHECKED BY | DATE |
| B.J.L. | 07/12/2024 |

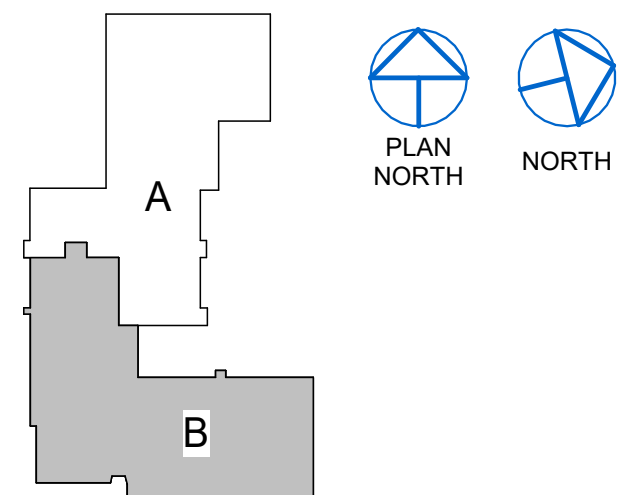
SIGNAGE PLAN TYPES/LOCATIONS
1ST FL. AREA A, 2ND FL. AREA A & C
BUILDING NUMBER SHEET NUMBER

ES A920

SIGN TYPES KEY

| TYPE | DESCRIPTION |
|------|--|
| S1 | TYPICAL CLASSROOM OR OFFICE |
| S2 | CLOSET, STORAGE, ELECTRICAL ROOM, ETC. |
| S3 | GENDER NEUTRAL RESTROOM |
| S4 | WOMEN'S, MENS, BOYS OR GIRLS |
| S5 | STAFF GENDER NEUTRAL RESTROOM |
| S6 | STAIRS |
| S7 | EXIT STAIR |
| S8 | ACCESSIBLE LIFT |
| S9 | ACCESSIBLE EXIT |
| S10 | ACCESSIBLE ENTRANCE |
| S11 | EMERGENCY EVACUATION ROUTE |
| S12 | SCHOOL VISITORS NOTICE |
| S13 | MAXIMUM OCCUPANCY |
| S14 | DOOR ALARM |
| S15 | DO NOT USE ELEVATOR IN CASE OF FIRE |
| S16 | DRINKING FOUNTAIN |
| S17 | EXIT |
| S18 | AREA OF REFUGE |
| S19 | PUSH FOR HELP |

KEY PLAN:



SED NO. 44-09-01-04-0-005-008

THIS SHEET INCORPORATES COLOR GRAPHICS WHICH INDICATE IMPORTANT INFORMATION AND SHALL BE PRINTED IN COLOR IF REPRODUCED BY A CONTRACTOR.

BCA Architects & Engineers
 Watertown | Ithaca | Saratoga Springs | Rochester
 WWW.THEBCGROUP.COM

COPYRIGHT © 2022 - BCA ARCHITECTS & ENGINEERS. WARNING - IT IS A VIOLATION OF THE NEW YORK STATE EDUCATION LAW FOR ANY UNAUTHORIZED ALTERATIONS TO THIS DOCUMENT AS PER ARTICLE 145 AND 147.

BCA
 ARCHITECTS
 ENGINEERS



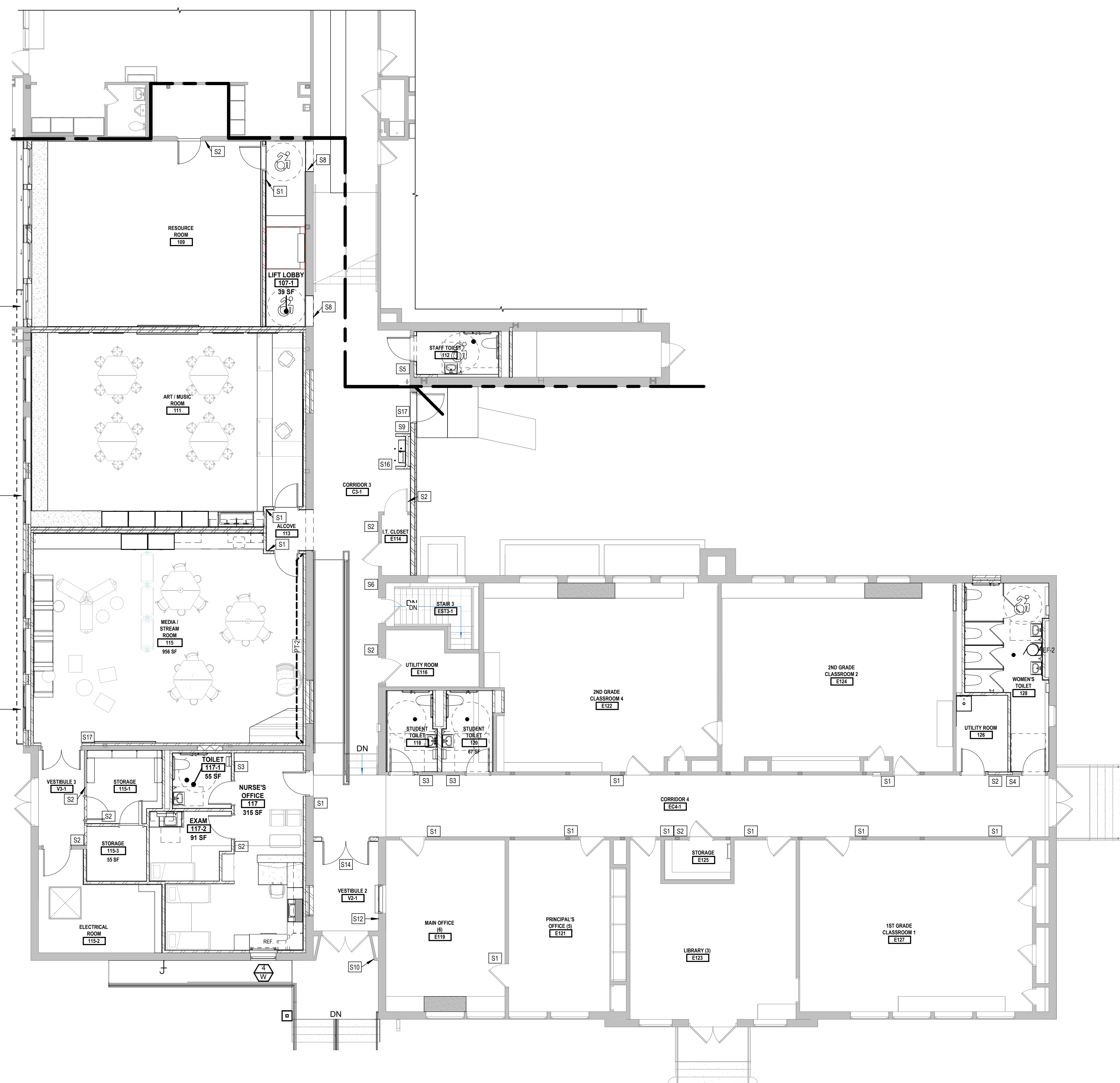
HIGHLAND FALLS-FORT MONTGOMERY CSD
 ALTERATIONS AND ADDITIONS TO:
 FORT MONTGOMERY ELEMENTARY SCHOOL
 HIGHLAND FALLS - ORANGE COUNTY - NEW YORK

| REV | DATE | DESCRIPTION |
|-----|------------|-----------------|
| 2 | 07/12/2024 | BID ADDENDUM #2 |

| | |
|-------------------|--------------------------------|
| DRAWN BY LEW | PROJECT NUMBER 2022-138 PH1 |
| CHECKED BY BJL | DATE 07/12/2024 |

SIGNAGE PLAN TYPES/LOCATIONS
 1ST FL. AREA B

| | |
|------------------------------|-----------------------------|
| BUILDING NUMBER ES | SHEET NUMBER A921 |
|------------------------------|-----------------------------|



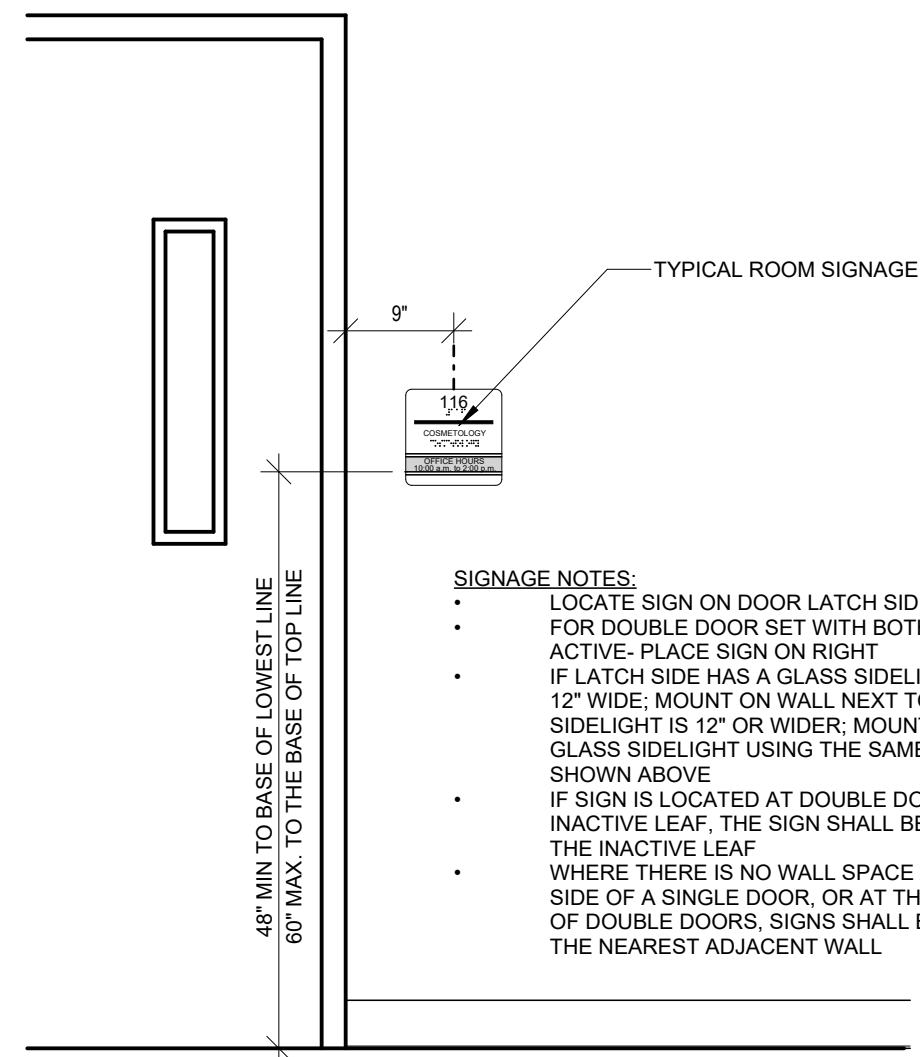
PROVIDE RESCUE WINDOW STICKERS ON EGRESS WINDOWS NOTED

RESCUE WINDOW

RESCUE WINDOW

RESCUE WINDOW

1 FIRST FLOOR SIGNAGE PLAN - AREA B
 SCALE: 1/8" = 1'-0"



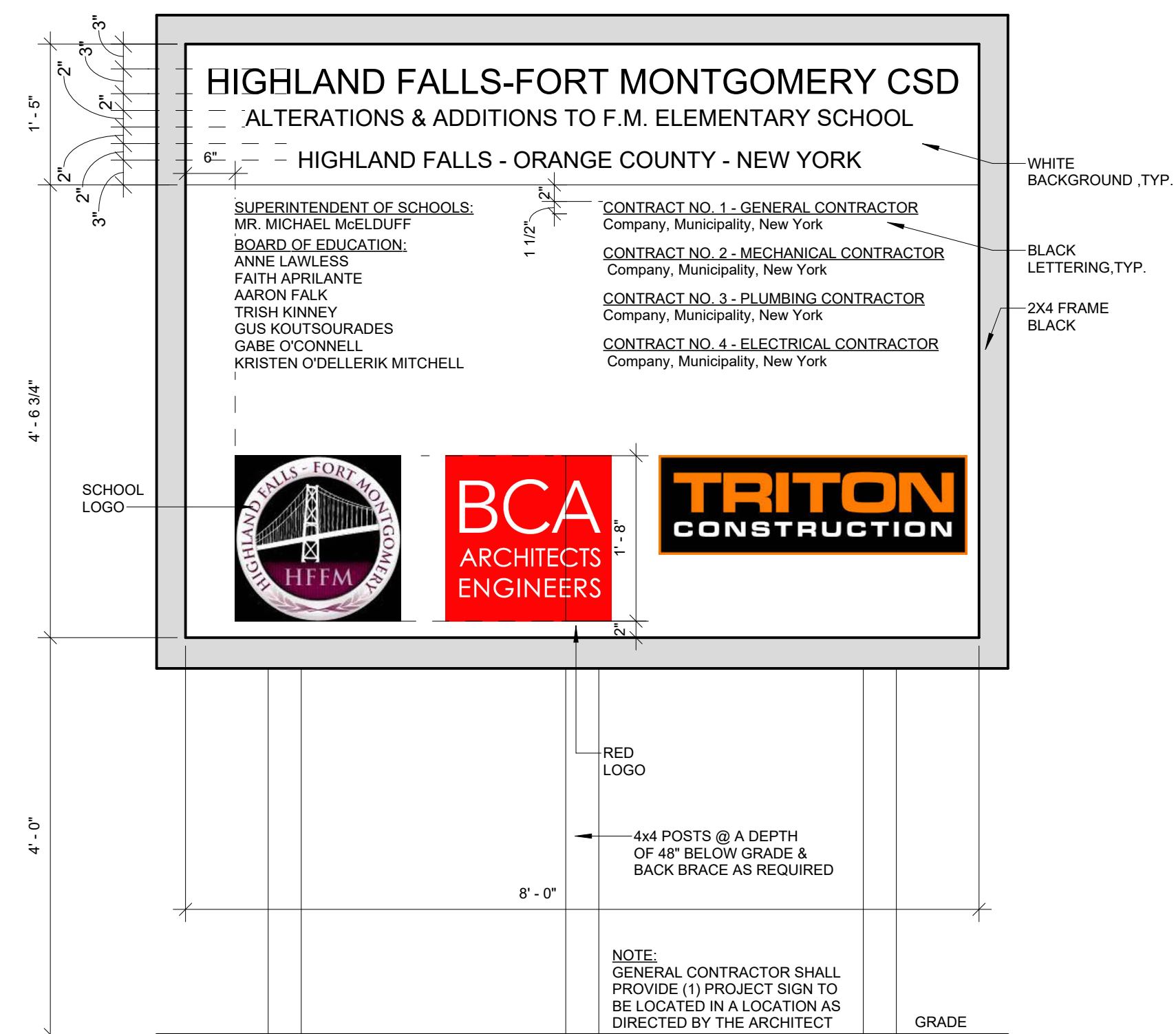
- SIGNAGE NOTES:**
- LOCATE SIGN ON DOOR LATCH SIDE FOR DOUBLE DOOR SET WITH BOTH LEAFS ACTIVE- PLACE SIGN ON RIGHT
 - IF LATCH SIDE HAS A GLASS SIDELIGHT LESS THAN 12" WIDE, MOUNT ON WALL NEXT TO SIDELIGHT. IF SIDELIGHT IS 12" OR WIDER, MOUNT ON THE GLASS SIDELIGHT USING THE SAME DIMENSIONS SHOWN ABOVE
 - IF SIGN IS LOCATED AT DOUBLE DOORS WITH AN INACTIVE LEAF, THE SIGN SHALL BE LOCATED ON THE INACTIVE LEAF
 - WHERE THERE IS NO WALL SPACE AT THE LATCH SIDE OF A SINGLE DOOR, OR AT THE RIGHT SIDE OF DOUBLE DOORS, SIGNS SHALL BE LOCATED ON THE NEAREST ADJACENT WALL

2 TYPICAL CORRIDOR/ROOM DOOR DETAIL
SCALE: 3/4" = 1'-0"

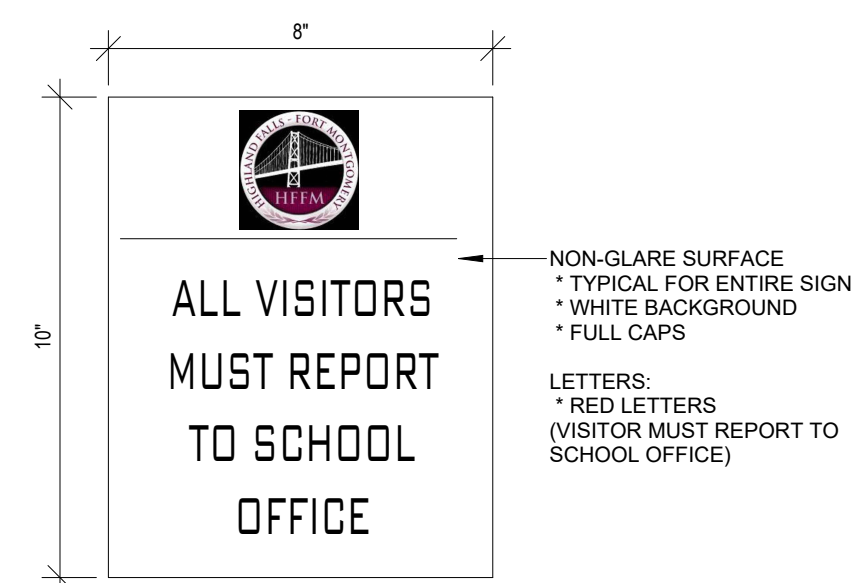
- NOTE:**
- G.C. TO PROVIDE SIGNS PERMANENTLY IDENTIFY (FIRE WALLS, FIRE BARRIERS, FIRE PARTITIONS, SMOKE BARRIERS) IN THE CONCEALED SPACE ABOVE THE CEILINGS WHERE WORK INCLUDES ACCESS ABOVE CEILINGS. SEE CODE COMPLIANCE PLAN FOR WALL TYPES. SEE SPECIFICATION SECTION 07353 FIRE AND SMOKE IDENTIFICATION SIGN SHALL BE LOCATED WITHIN 15 FT OF THE END OF EACH WALL NOT TO EXCEED 30' O.C. AND AT INTERVALS NOT EXCEEDING 30 FT MEASURED HORIZONTALLY. LETTERING SHALL NOT BE LESS THAN 3 INCHES IN HEIGHT WITH CONTRASTING COLORS.



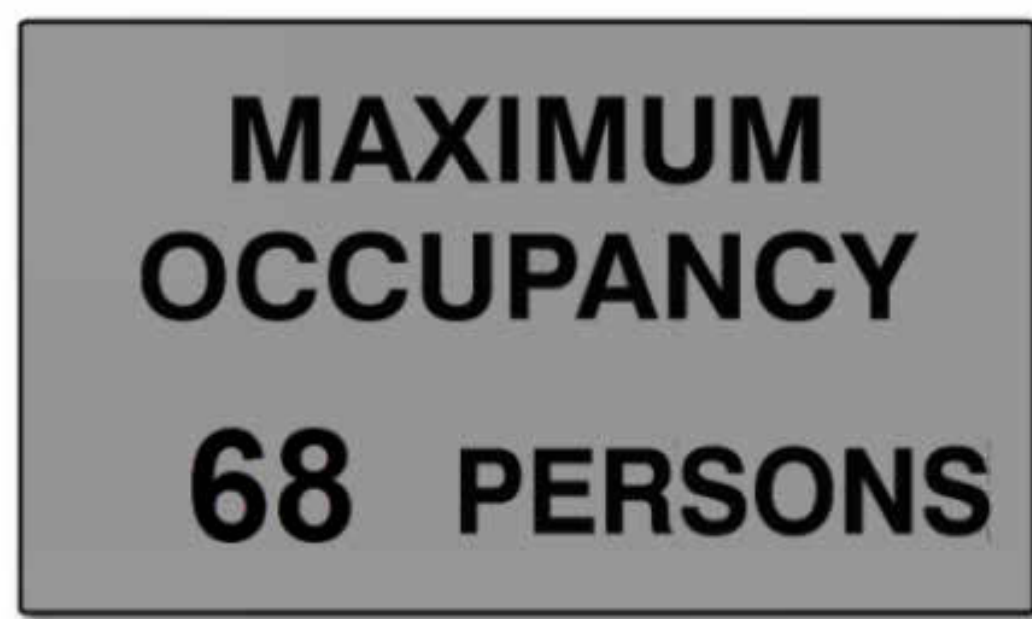
3 WALL RATING SIGN
SCALE: 1 1/2" = 1'-0"



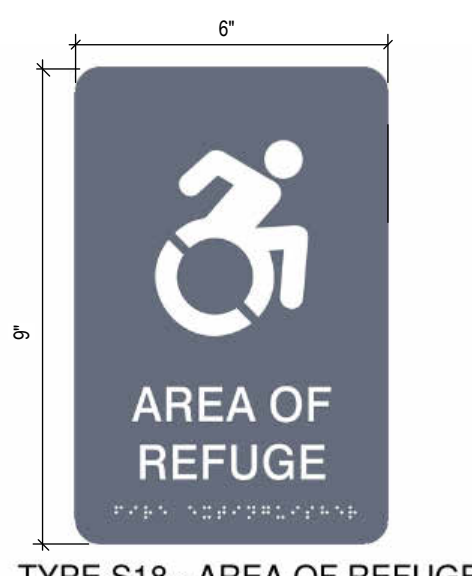
4 SIGNAGE - PROJECT SIGN
SCALE: 3/4" = 1'-0"



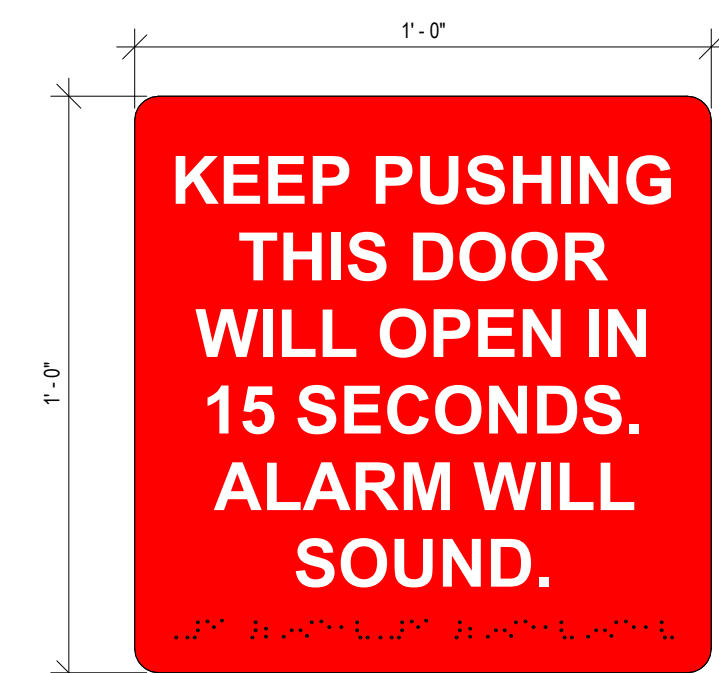
TYPE S12 - SCHOOL VISITORS



TYPE S13 - OCCUPANCY SIGN
Brushed aluminum - No Braille



TYPE S18 - AREA OF REFUGE



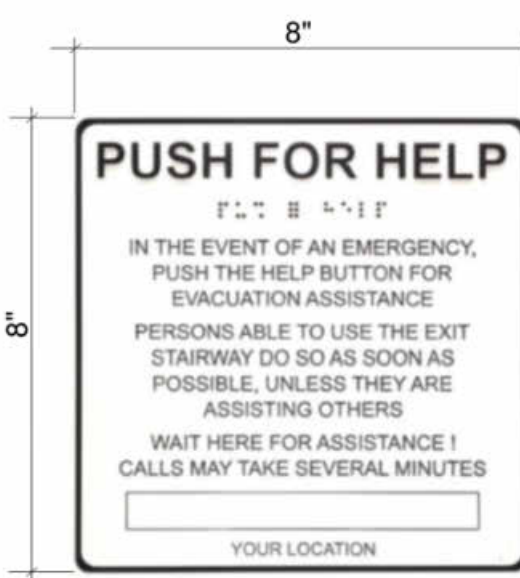
TYPE S14 - DOOR ALARM



TYPE S8 - ACCESSIBLE EXIT



TYPE S9 - ACCESSIBLE EXIT



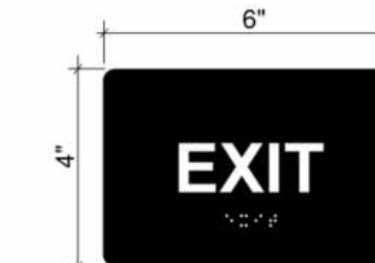
TYPE S19 - PUSH FOR HELP



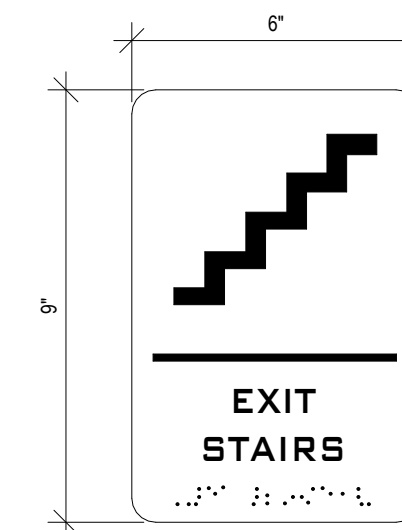
TYPE S15 - DO NOT USE ELEVATOR



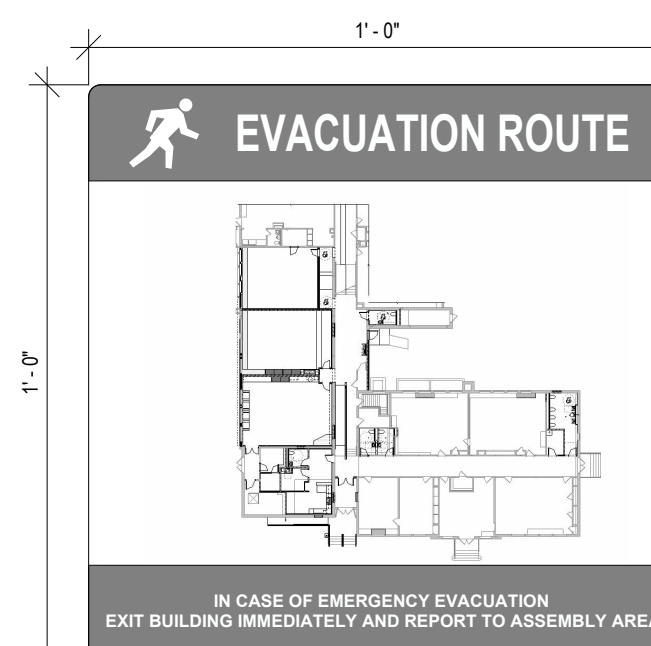
TYPE S16 - DRINKING FOUNTAIN



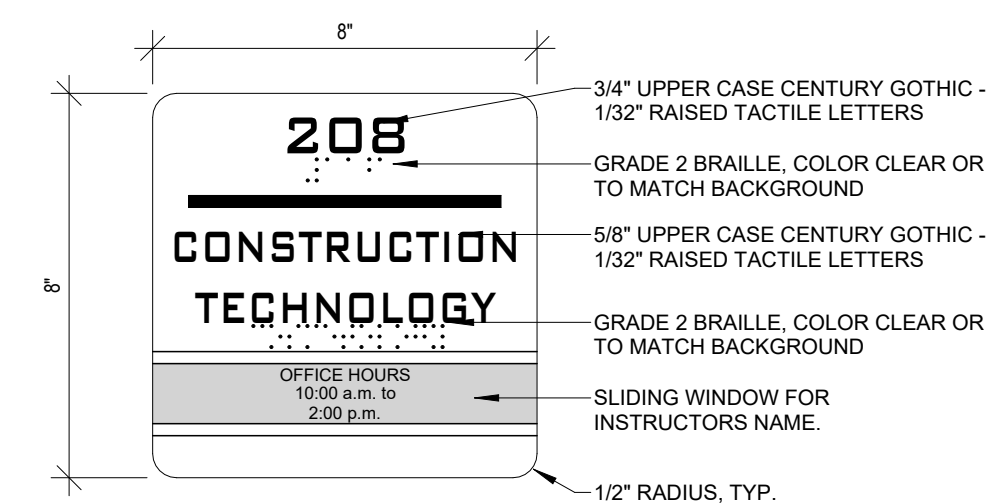
TYPE S17 - EXIT



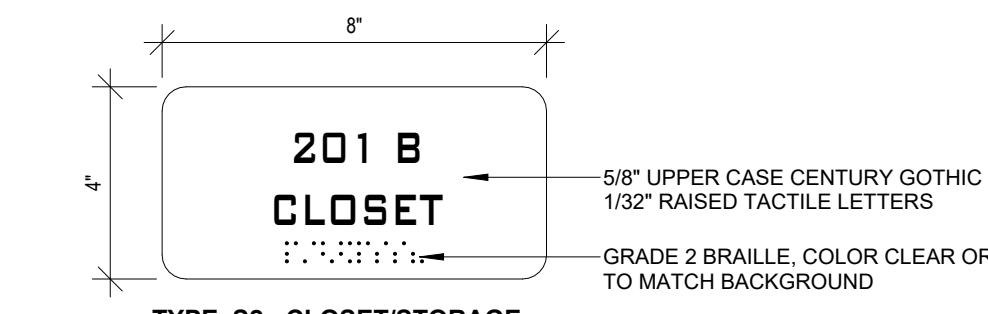
TYPE S7 - EXIT STAIR



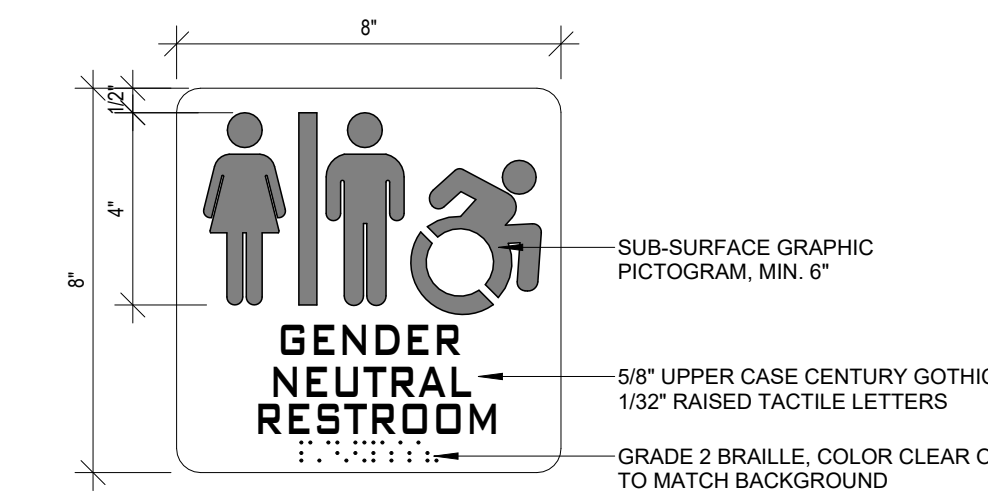
TYPE S11 - EMERGENCY EVACUATION ROUTE



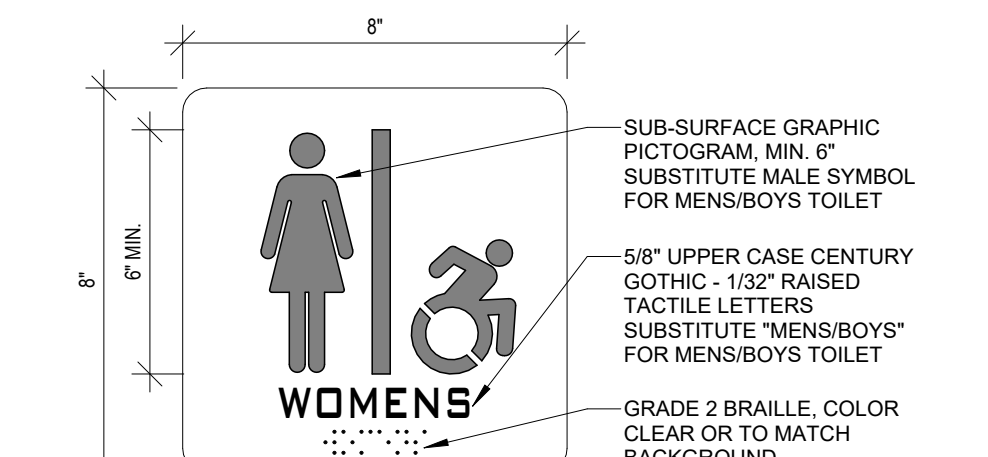
TYPE S1 - TYPICAL CLASSROOM OR OFFICE



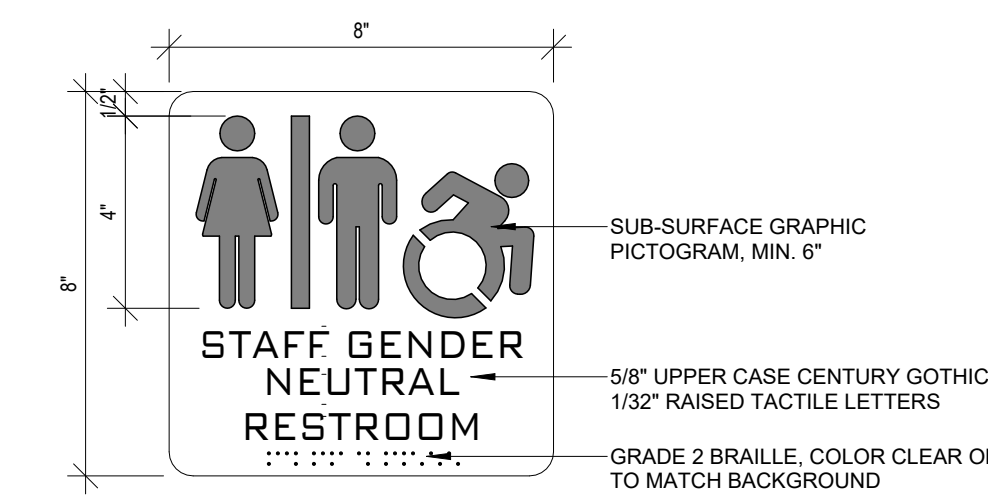
TYPE S2 - CLOSET/STORAGE



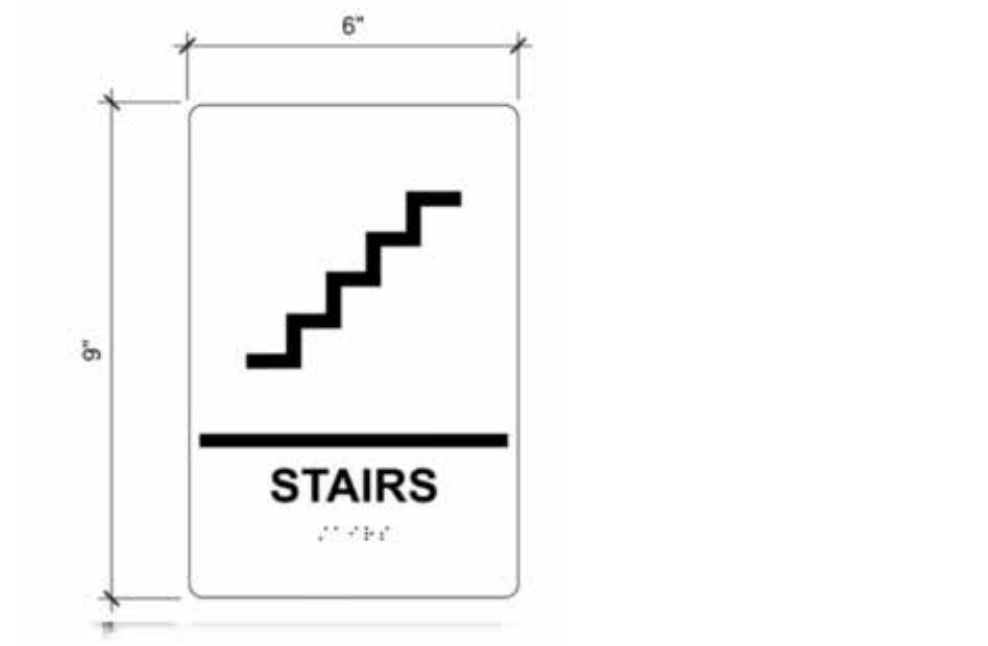
TYPE S3 - GENDER NEUTRAL RESTROOM



TYPE S4 - WOMENS, MENS, BOYS OR GIRLS TOILET



TYPE S5 - STAFF GENDER NEUTRAL RESTROOM



TYPE S6 - STAIRS

SIGN TYPES KEY

| TYPE | DESCRIPTION |
|------|--|
| S1 | TYPICAL CLASSROOM OR OFFICE |
| S2 | CLOSET, STORAGE, ELECTRICAL ROOM, ETC. |
| S3 | GENDER NEUTRAL RESTROOM |
| S4 | WOMENS, MENS, BOYS OR GIRLS |
| S5 | STAFF GENDER NEUTRAL RESTROOM |
| S6 | STAIRS |
| S7 | EXIT STAIR |
| S8 | ACCESSIBLE LIFT |
| S9 | ACCESSIBLE EXIT |
| S10 | ACCESSIBLE ENTRANCE |
| S11 | EMERGENCY EVACUATION ROUTE |
| S12 | SCHOOL VISITORS NOTICE |
| S13 | MAXIMUM OCCUPANCY |
| S14 | DOOR ALARM |
| S15 | DO NOT USE ELEVATOR IN CASE OF FIRE |
| S16 | DRINKING FOUNTAIN |
| S17 | EXIT |
| S18 | AREA OF REFUGE |
| S19 | PUSH FOR HELP |

KEY PLAN:

SED NO. 44-09-01-04-0-005-008

THIS SHEET INCORPORATES COLOR GRAPHICS WHICH INDICATE IMPORTANT INFORMATION AND SHALL BE PRINTED IN COLOR IF REPRODUCED BY A CONTRACTOR.

BCA Architects & Engineers
Watertown | Ithaca | Saratoga Springs | Rochester
WWW.THEBCGROUP.COM

COPYRIGHT © 2022 - BCA ARCHITECTS & ENGINEERS. WARNING - IT IS A VIOLATION OF THE NEW YORK STATE EDUCATION LAW FOR ANY UNAUTHORIZED ALTERATIONS TO THIS DOCUMENT AS PER ARTICLE 145 AND 147.



HIGHLAND FALLS-FORT MONTGOMERY CSD
ALTERATIONS AND ADDITIONS TO:
FORT MONTGOMERY ELEMENTARY SCHOOL
HIGHLAND FALLS - ORANGE COUNTY - NEW YORK

| REV | DATE | DESCRIPTION |
|-----|------------|-----------------|
| 2 | 07/12/2024 | BID ADDENDUM #2 |

DRAWN BY LEW PROJECT NUMBER 2022-138 PH1
CHECKED BY BJL DATE 07/12/2024

SIGNAGE TYPES

| BUILDING NUMBER | SHEET NUMBER |
|-----------------|--------------|
| ES | A922 |

