



FREDERICK W. SEEBA, PE, MANAGING PARTNER  
LAWRENCE SALVESEN, AIA, PARTNER  
KEVIN J. WALSH, AIA, PARTNER  
KENNETH G. SCHUPNER, AIA, PARTNER  
JOSEPH B. RETTIG, AIA, PARTNER  
GARY W. SCHIEDE, AIA, PARTNER  
ROGER P. SMITH, AIA, FOUNDING PRINCIPAL

March 29, 2025

### **BID CLARIFICATION No. 2**

Re: Bedford UFSD  
Phase 2 – Bond Improvements at  
Fox Lane High School, Fox Lane Middle  
School, Administration Building  
BBS File No. 23-131a-c

This clarification contains changes to the requirements of the contract drawings and/or project manual. Such changes shall be incorporated into the contract documents and shall apply to the work with the same meaning and force as if they had been included in the original documents. Wherever this clarification modifies a portion of a paragraph of project manual or any portion of the drawing, the remainder of the paragraph or drawing affected shall remain in force.

The conditions of the basic project manual shall govern all work described in this clarification. Wherever the conditions of work and the quality or quantity of materials or workmanship are not fully described in this clarification, the conditions of work, etc. included in the basic project manual for similar items of work shall apply to the work described in this clarification.

The "Conditions of the Contract" apply to all work described in this clarification.

The following changes shall be and are hereby made:

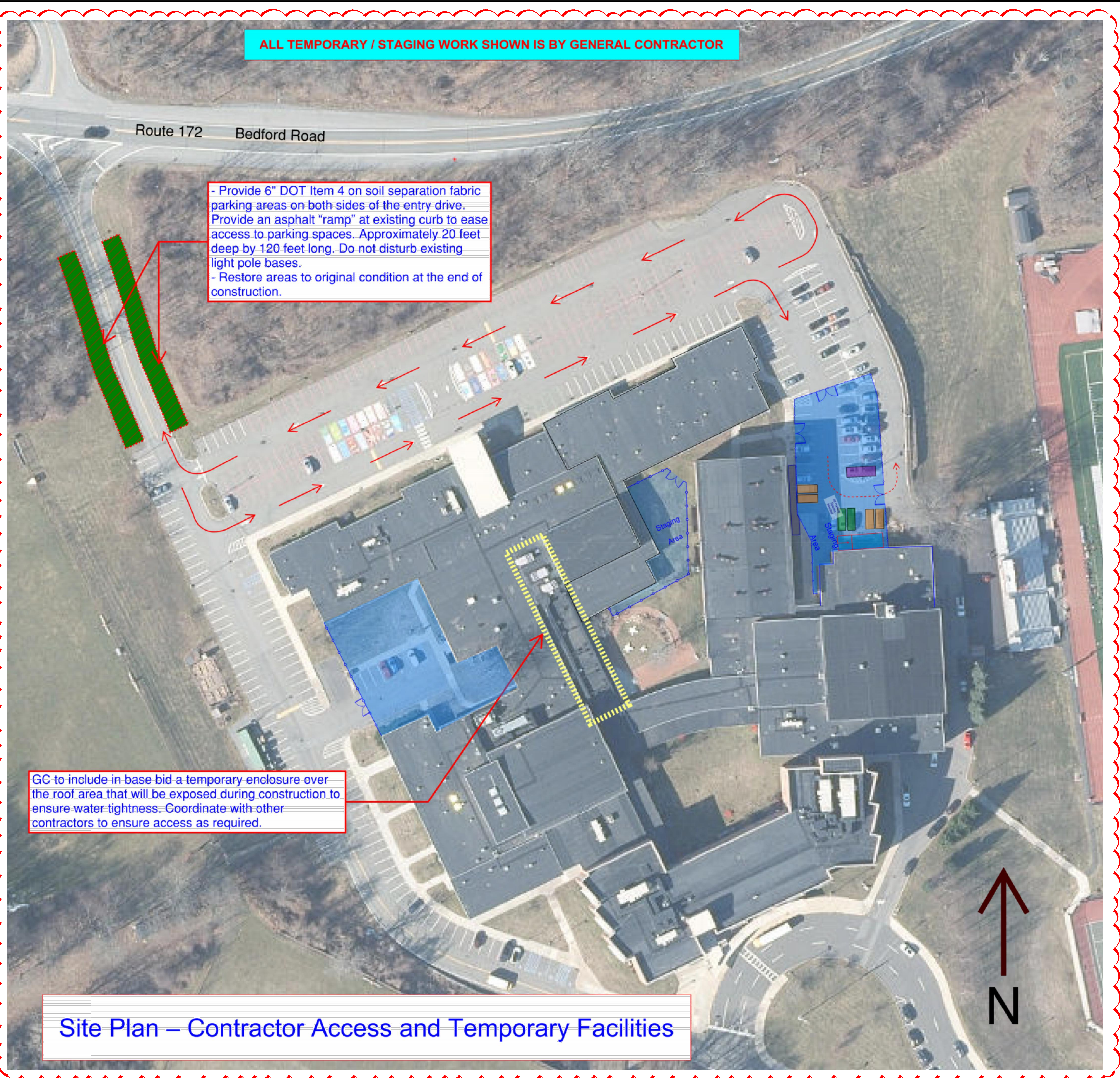
### **CONSTRUCTION DOCUMENT MODIFICATIONS**

#### **1. 23-131a, b, & c Construction Implementation Plans (CIPS)**

- a. The Construction Implementation Plans (CIPS) included in this clarification shall supercede the previously issued documents and all scope of work shown shall be included as part of the general contractor's base bid.

**END OF CLARIFICATION**





ALL TEMPORARY / STAGING WORK SHOWN IS BY GENERAL CONTRACTOR

- Provide 6" DOT Item 4 on soil separation fabric parking areas on both sides of the entry drive. Provide an asphalt "ramp" at existing curb to ease access to parking spaces. Approximately 20 feet deep by 120 feet long. Do not disturb existing light pole bases.  
- Restore areas to original condition at the end of construction.

GC to include in base bid a temporary enclosure over the roof area that will be exposed during construction to ensure water tightness. Coordinate with other contractors to ensure access as required.

Site Plan – Contractor Access and Temporary Facilities

REV.	DATE	ITEM
1	03/19/2025	BID ADDENDUM No. 4
2	03/29/2025	BID CLARIFICATION No. 2

NOTICE  
THESE DRAWINGS ARE BASED ON CONSTRUCTION DRAWINGS NOT PREPARED BY THE ARCHITECT. LANDSCAPE ARCHITECTS AND ENGINEERS, P.C. AND THEREFORE, MAY NOT REPRESENT THE CONDITIONS AS CONSTRUCTED AT THE TIME. ALL EXISTING INFORMATION SHOWN ARE REPRESENTED AS SUGGESTIVE INFORMATION AS THEY MAY NOT HAVE BEEN BUILT AND DETAIL FOR THE ORIGINAL DOCUMENTS OR PER THE OWNER'S INFORMATION.

KEY PLAN  
NOT TO SCALE

PROJECT  
BEDFORD CENTRAL SCHOOL DISTRICT  
PHASE 2 - BOND IMPROVEMENTS  
FOX LANE HIGH SCHOOL  
TOWN OF BEDFORD / WESTCHESTER COUNTY

DWG TITLE  
SITE PLAN - PREPARED BY ARRIS CONTRACTING COMPANY, INC.  
CONTRACTOR ACCESS and TEMPORARY FACILITIES

DRAWING BY:  
CHECK BY:

SED No. 66-01-02-06-0-003-024

DISTRICT BEDFORD CENTRAL SCHOOL DISTRICT

PROJECT PHASE 2 - BOND IMPROVEMENTS

DWG TITLE SITE PLAN - CONTRACTOR ACCESS and TEMPORARY FACILITIES

SCALE: AS NOTED

DATE: APRIL 2024

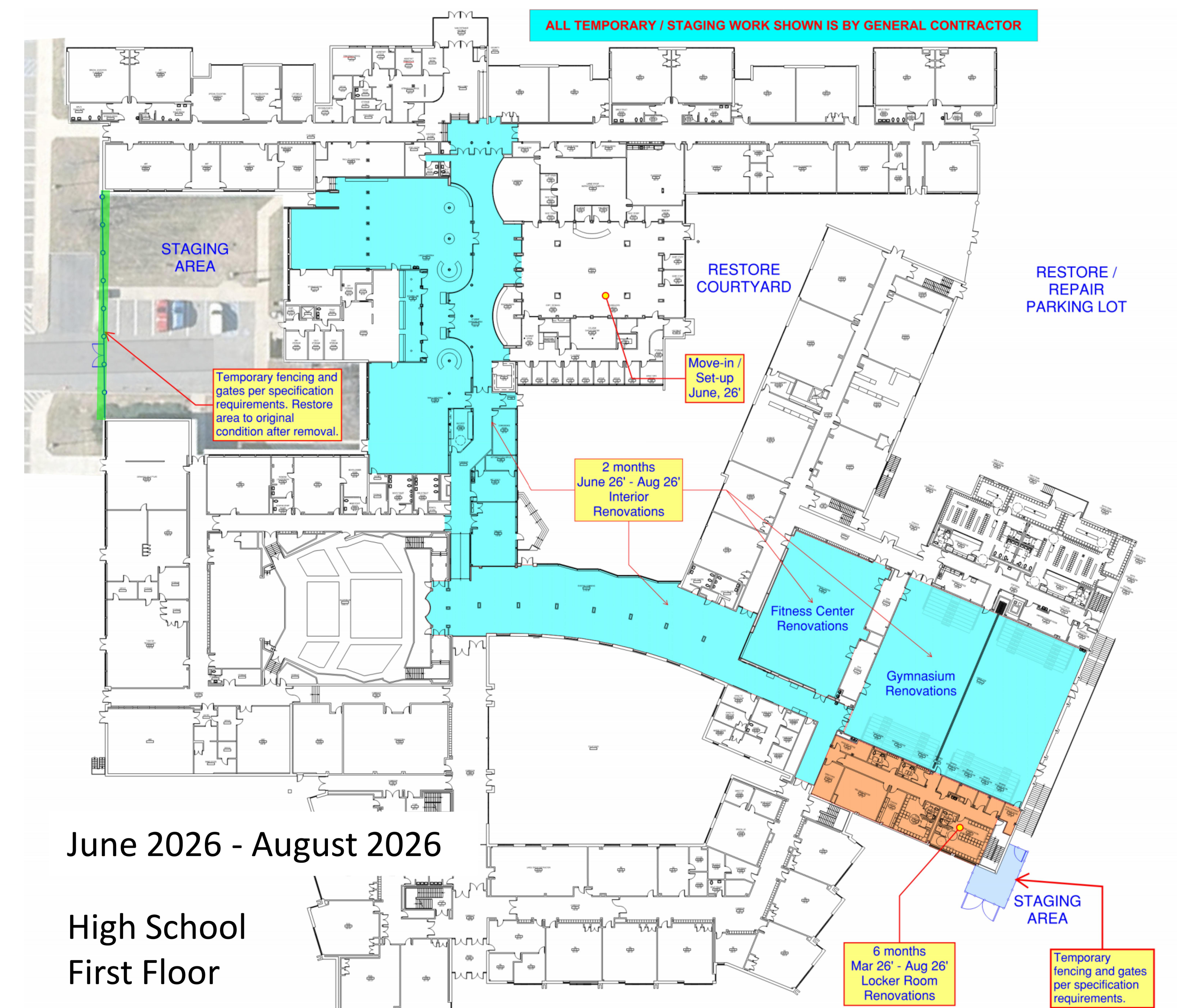
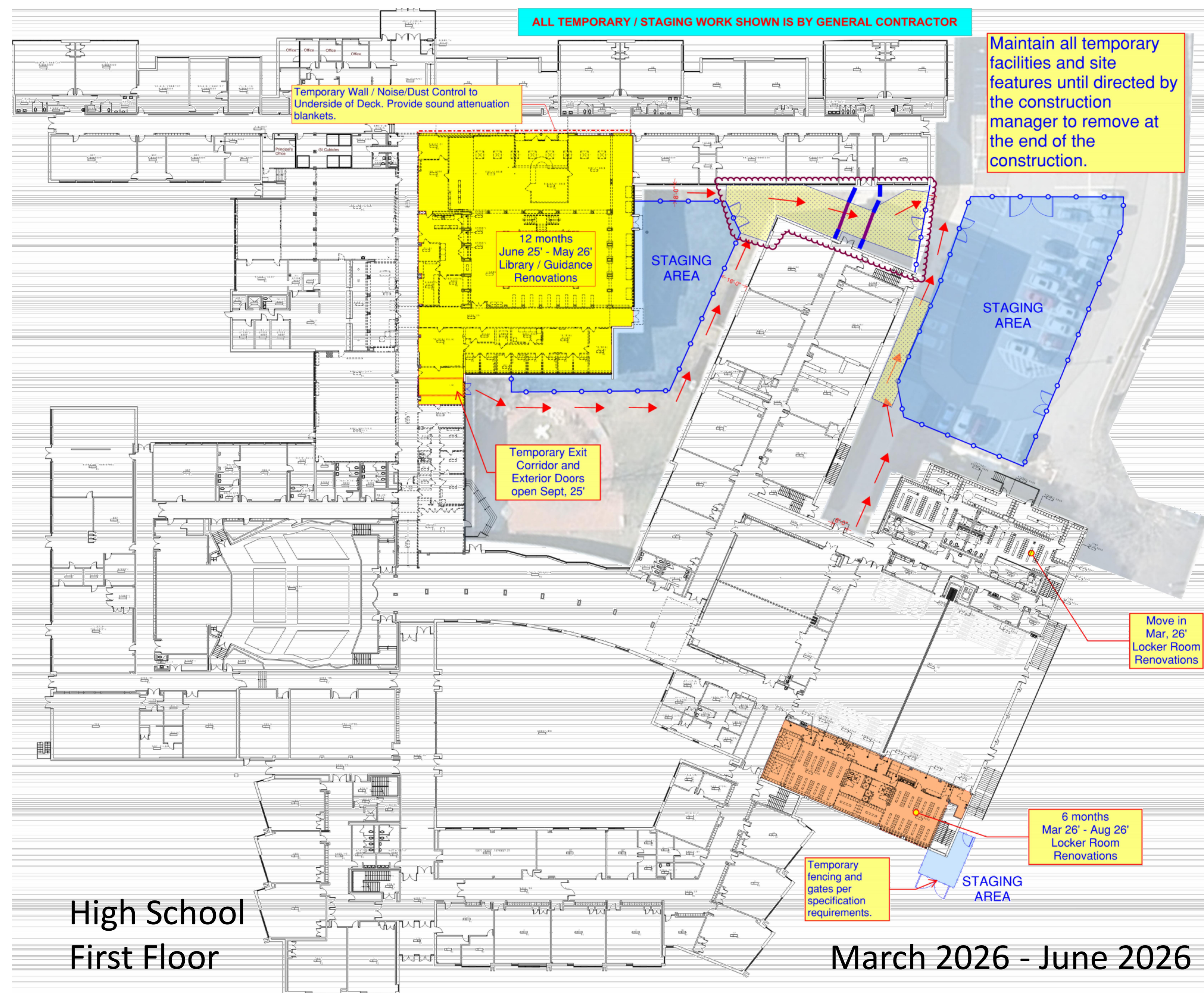
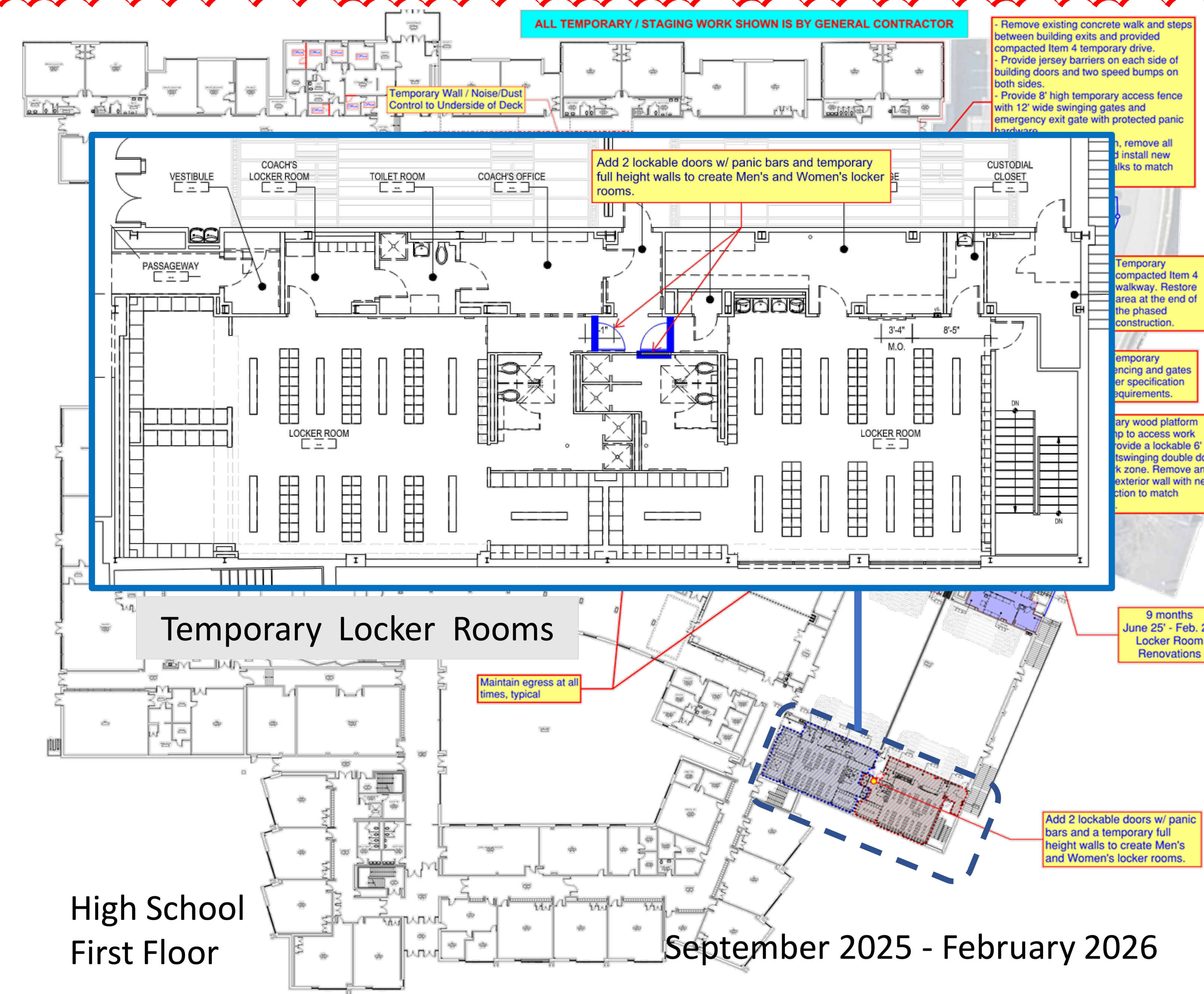
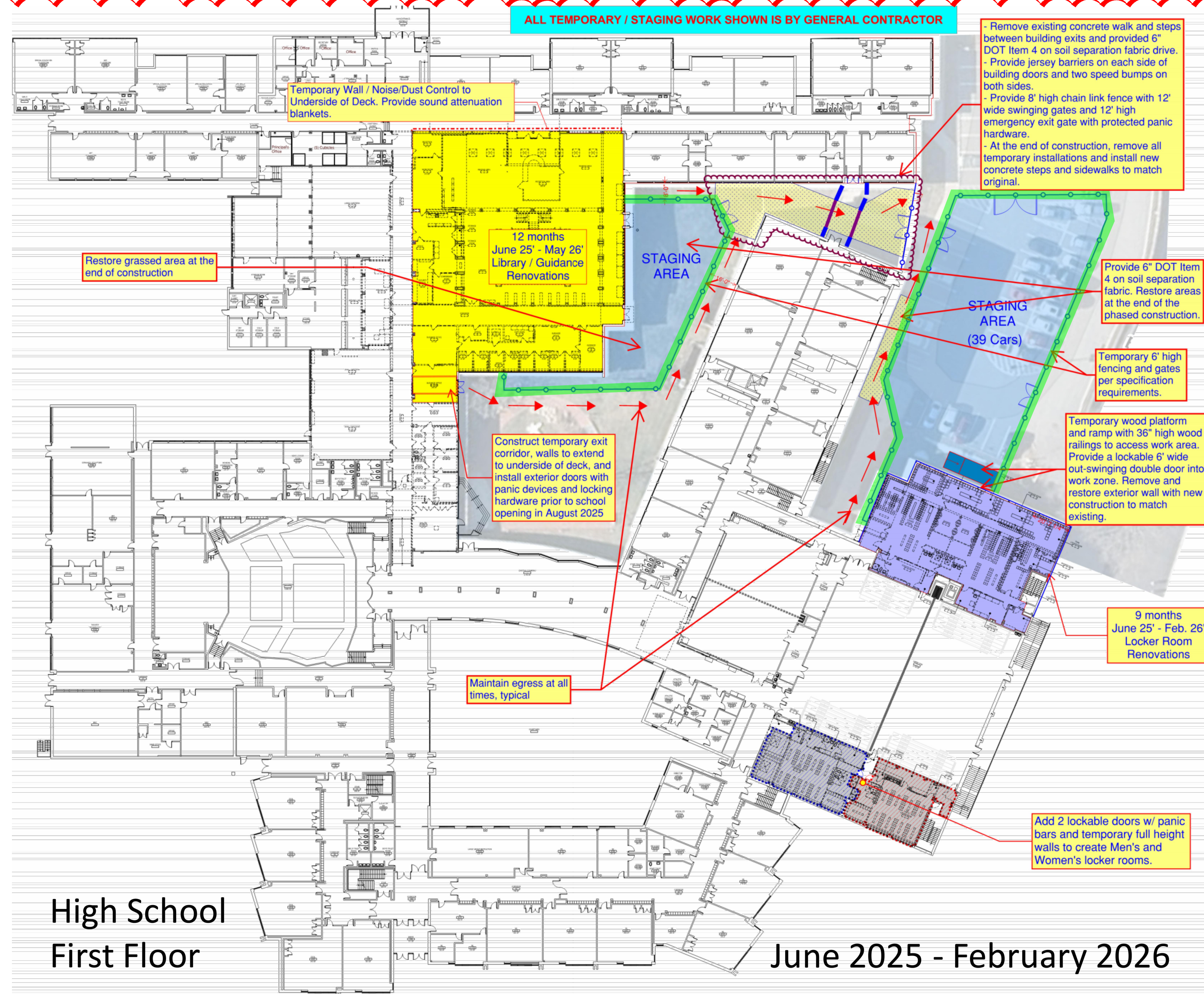
BID PICK-UP: FEBRUARY 24, 2025

FILE No. 23-131a FLHS

CIP0.01







REV.	DATE	ITEM
1	03/29/2025	BID CLARIFICATION No. 2

NOTICE

THESE DRAWINGS ARE BASED ON CONSTRUCTION DRAWINGS NOT PREPARED BY THIS ARCHITECT, LANDSCAPE ARCHITECT AND ENGINEERS, P.C. AND THEREFORE, MAY NOT REPRESENT THE CONDITIONS AS CONSTRUCTED AT THE TIME. ALL EXISTING CONDITIONS SHOWN ARE REPRESENTED AS SUGGESTIVE INFORMATION AS THEY MAY NOT HAVE BEEN BUILT AND DETAIL FOR THE ORIGINAL DOCUMENTS OR PER THE OWNER'S INFORMATION.

KEY PLAN

NOT TO SCALE

PROJECT

BEDFORD CENTRAL SCHOOL DISTRICT  
PHASE 2 - BOND IMPROVEMENTS  
FOX LAKE HIGH SCHOOL  
TOWN OF BEDFORD / WESTCHESTER COUNTY

DWG TITLE

FLOOR PLANS - PREPARED BY ARRIS CONTRACTING COMPANY, INC.  
CONSTRUCTION IMPLEMENTATION PLANS

DRAWING BY:

CHECK BY:

SED No: 66-01-02-06-0-003-024

DISTRICT: BEDFORD CENTRAL SCHOOL DISTRICT

PROJECT: PHASE 2 - BOND IMPROVEMENTS

DWG TITLE: CONSTRUCTION IMPLEMENTATION PLANS

SCALE: AS NOTED

DATE: APRIL 2024

BID PICK-UP: FEBRUARY 24, 2025

FILE No: 23-131a

FLHS

CIP0.02