

Addendum



Alterations to Administration Building Peekskill City School District APN 2226.2A

Building:	SED Control No:	SED Review No.
Administration Building	66-15-00-01-0-009-013	24-0754

ADDENDUM No. 02

June 9, 2025

Bidders shall acknowledge receipt of this addendum by notation on the bid sheets.

The following addition, changes or deletions shall be included in the preparation of proposals and are part of the contract work. This addendum shall take precedence over the drawings and specifications for the items mentioned. Any addition, change, deletions, etc., shall include all adjustments in other work as necessary and shall include the work of all trades involved.

Division 1 Specifications

1. Section 011000: ADD the following Paragraph F after 011000 item 1.8, E: "F. See also Section 011001 - Preliminary Construction Schedule"
2. ADD attached Section 011001 - PRELIMINARY CONSTRUCTION SCHEDULE

Technical Specifications

3. ADD attached Specification Section 076200 - SHEET METAL FLASHING AND TRIM.

Drawings

4. DELETE Sheet **G 702** and REPLACE with attached revised Sheet **G 702**.
5. DELETE Sheet **G 802** and REPLACE with attached revised Sheet **G 802**.

END OF ADDENDUM

Mosaic Associates Architects

The Fear Building, 2 Third Street, Suite 440, Troy, NY 12180 T 518.479.4000 1.877.479.3744 F 518.477.1356

ID	Task Name	Duration	Start	Finish	<div><div></div><div>Half 2, 2025</div><div></div><div>Half 1, 2026</div><div></div><div>Half 2</div></div>											
1	Peekskill CSD - Alterations to Administration Building	290 days	5/21/25	6/30/26												
2	Bidding and Contract Awards	30 days	5/21/25	7/1/25												
3	Bids Released	0 days	5/21/25	5/21/25												
4	Bid Walkthrough	0 days	5/29/25	5/29/25												
5	Pre-bid RFIs Due Date	0 days	6/9/25	6/9/25												
6	Bid Opening	0 days	6/18/25	6/18/25												
7	Contractor Interviews	0 days	6/23/25	6/23/25												
8	Contract Award	0 days	7/1/25	7/1/25												
9	Preconstruction	49 days	7/1/25	9/8/25												
10	Submittals and Shop Drawings	30 days	7/1/25	8/12/25												
11	Procurement	44 days	7/9/25	9/8/25												
12	Construction	204 days	8/1/25	5/13/26												
13	Mobilize, Staging and Temporary Logistics	5 days	8/1/25	8/7/25												
14	Abatement	8 days	8/8/25	8/19/25												
15	Demo Existing Masonry Walls & Existing Stairs	16 days	8/8/25	8/29/25												
16	Install Temporary Shoring	7 days	8/8/25	8/18/25												
17	Demo Existing Structural Floor Slab	12 days	9/1/25	9/16/25												
18	Demo Existing Finishes and MEPs	18 days	8/19/25	9/11/25												
19	Install New Steel for Floor and Stair (Occupied Building)	15 days	8/19/25	9/8/25												
20	Remove existing Windows/Provide Temporary Enclosure (Water-Tight)	7 days	9/5/25	9/15/25												
21	Infill Existing Pool System	8 days	9/16/25	9/25/25												
22	Pour New Slab and Steel Footings	12 days	9/26/25	10/13/25												
23	Install Structural Steel (Occupied Building)	9 days	10/14/25	10/24/25												
24	Frame Walls and Soffits	16 days	10/27/25	11/17/25												
25	MEP Rough-in	26 days	11/18/25	12/23/25												
26	Insulate, Sheetrock/Sand and Paint	32 days	12/24/25	2/5/26												
27	Install New Windows and Precast	16 days	3/6/26	3/27/26												
28	Temporary Enclosure, Temporary Heat	130 days	11/3/25	5/1/26												
29	Install Storefronts at Vestibule	8 days	3/27/26	4/7/26												
30	Doors, Frames and Hardware	9 days	3/6/26	3/18/26												
31	Install Stair & Railings	12 days	10/27/25	11/11/25												
32	Frame Ceiling	6 days	2/6/26	2/13/26												
33	MEP Finishes	24 days	2/16/26	3/19/26												
34	Floor Leveling/Preparation	6 days	2/6/26	2/13/26												
Project: Peekskill CSD_Admin Building_Bid Schedule_Bid Addendum #1					Project Summary											
Date: 6/3/2025					Milestone											
Released: Addendum #01					Summary											

ID	Task Name	Duration	Start	Finish	M	J	Half 2, 2025	A	S	O	N	D	Half 1, 2026	F	M	A	M	J	Half 2
35	Wall Preparation	8 days	2/16/26	2/25/26															
36	Install Wall Finishes	11 days	2/26/26	3/12/26															
37	Floor Finishes	7 days	3/13/26	3/23/26															
38	Install Operable Partitions	5 days	3/24/26	3/30/26															
39	"White-out" Ceilings	7 days	3/31/26	4/8/26															
40	Install Millwork	5 days	3/24/26	3/30/26															
41	Install Window Treatments	5 days	4/9/26	4/15/26															
42	MEP Tie-ins, Fire Alarm, Controls	8 days	4/9/26	4/20/26															
43	Testing and Balancing	2 days	4/21/26	4/22/26															
44	Grade Existing Site	16 days	3/30/26	4/20/26															
45	Mill, Pave Asphalt	11 days	3/30/26	4/13/26															
46	Form and Pour Concrete Stairs and Walkways	10 days	4/14/26	4/27/26															
47	Install Exterior Canopy	16 days	4/7/26	4/28/26															
48	Seed and Stabilize	12 days	4/28/26	5/13/26															
49	Life-Safety Signed Off / Architect Walkthrough	3 days	4/29/26	5/1/26															
50	Substantial Completion/ Owner Occupancy	0 days	5/1/26	5/1/26															
51	Demobilize	3 days	5/4/26	5/6/26															
52	Installation of FFE	5 days	4/21/26	4/27/26															
53	Punch List and Closeout	42 days	5/4/26	6/30/26															
54	Punch List (SECOND-SHIFT)	21 days	5/4/26	6/1/26															
55	Closeout	42 days	5/4/26	6/30/26															

Project: Peekskill CSD_Admin Building_Bid Schedule_Bid Addendum #2
Date: 6/3/2025
Released: Addendum #2

Task Split

Milestone Summary

Project Summary

Page 2

SECTION 076200 - SHEET METAL FLASHING AND TRIM

PART 1 - GENERAL

1.1 RELATED DOCUMENTS

- A. Drawings and general provisions of the Contract, including General and Supplementary Conditions and Division 01 Specification Sections, apply to this Section.

1.2 SUMMARY

- A. Section Includes:
 - 1. Formed roof-drainage sheet metal fabrications.
 - 2. Formed wall sheet metal fabrications.

1.3 COORDINATION

- A. Coordinate sheet metal flashing and trim layout and seams with sizes and locations of penetrations to be flashed, and joints and seams in adjacent materials.
- B. Coordinate sheet metal flashing and trim installation with adjoining roofing and wall materials, joints, and seams to provide leakproof, secure, and noncorrosive installation.

1.4 ACTION SUBMITTALS

- A. Product Data: For each product required.
- B. Samples for Initial Selection: For each type of sheet metal and accessory indicated with factory-applied finishes.

1.5 DELIVERY, STORAGE, AND HANDLING

- A. Do not store sheet metal flashing and trim materials in contact with other materials that might cause staining, denting, or other surface damage.
 - 1. Store sheet metal flashing and trim materials away from uncured concrete and masonry.
 - 2. Protect stored sheet metal flashing and trim from contact with water.
- B. Protect strippable protective covering on sheet metal flashing and trim from exposure to sunlight and high humidity, except to extent necessary for period of sheet metal flashing and trim installation.

1.6 WARRANTY

- A. Warranty Period, Finish: Limited 30-year warranty for prefinished coil-coated steel and aluminum coated with Kynar 500 standard colors covering fade, chalk, and film integrity

SECTION 076200 - SHEET METAL FLASHING AND TRIM

PART 2 - PRODUCTS

2.1 MANUFACTURED DOWNSPOUTS

A. Round Downspout:

1. Basis of Design Product:

- a. Seal-Tite LT Round Downspout as manufactured by Metal-Era, LLC
- b. Substitutions in accordance with Section 016100

2. Material: 0.040" Aluminum

3. Formed Lengths: 10 feet

4. Seams: Double Seam Lock.

5. Finish: Fluoropon® High Performance Hylar 5000®/Kynar 500

6. Color: As selected by Architect from Manufacturer's Standard Colors.

B. Provide 1 3/8-inch wide downspout straps, two per 10-foot length. Color and Finish to match downspouts.

2.2 SHEET METALS

A. Protect mechanical and other finishes on exposed surfaces from damage by applying strippable, temporary protective film before shipping.

B. Aluminum Sheet: ASTM B209 (ASTM B209M), alloy as standard with manufacturer for finish required, with temper as required to suit forming operations and performance required; with smooth, flat surface.

1. Exposed Coil-Coated Finish:

- a. Two-Coat Fluoropolymer: AAMA 2605. Fluoropolymer finish containing not less than 70 percent polyvinylidene fluoride (PVDF) resin by weight in color coat. Prepare, pretreat, and apply coating to exposed metal surfaces to comply with coating and resin manufacturers' written instructions.

2. Color: As selected by Architect from manufacturer's full range.

2.3 MISCELLANEOUS MATERIALS

A. Fasteners: Wood screws, annular threaded nails, self-tapping screws, self-locking rivets and bolts, and other suitable fasteners designed to withstand design loads and recommended by manufacturer of primary sheet metal or manufactured item.

1. General: Blind fasteners or self-drilling screws, gasketed, with hex-washer head.

- a. Exposed Fasteners: Heads matching color of sheet metal using plastic caps or factory-applied coating. Provide metal-backed EPDM or PVC sealing washers under heads of exposed fasteners bearing on weather side of metal.
- b. Blind Fasteners: High-strength aluminum or stainless steel rivets suitable for metal being fastened.
- c. Spikes and Ferrules: Same material as gutter; with spike with ferrule matching internal gutter width.

SECTION 076200 - SHEET METAL FLASHING AND TRIM

2. Fasteners for Aluminum Sheet: Aluminum or Series 300 stainless steel.
3. Fasteners for Stainless Steel Sheet: Series 300 stainless steel.

2.4 FABRICATION, GENERAL

- A. Custom fabricate sheet metal flashing and trim to comply with details indicated and recommendations in cited sheet metal standard that apply to design, dimensions, geometry, metal thickness, and other characteristics of item required.

2.5 WALL SHEET METAL FABRICATIONS

- A. Through-Wall Flashing: Fabricate continuous flashings in minimum 96-inch- (2400-mm-) long, but not exceeding 12-foot- (3.6-m-) long, sections, under copings, and at shelf angles. Fabricate discontinuous lintel, sill, and similar flashings to extend 6 inches (150 mm) beyond each side of wall openings; and form with 2-inch- (50-mm-) high, end dams. Fabricate from the following materials:
 1. Stainless Steel: 0.0156 inch (0.396 mm)] thick.

PART 3 - EXECUTION

3.1 EXAMINATION

- A. Examine substrates, areas, and conditions, with installer present, for compliance with requirements for installation tolerances, substrate, and other conditions affecting performance of the Work.
 1. Verify compliance with requirements for installation tolerances of substrates.
 2. Verify that substrate is sound, dry, smooth, clean, sloped for drainage, and securely anchored.
 3. Verify that air- or water-resistant barriers have been installed over sheathing or backing substrate to prevent air infiltration or water penetration.
- B. Proceed with installation only after unsatisfactory conditions have been corrected.

3.2 INSTALLATION, GENERAL

- A. Install sheet metal flashing and trim to comply with details indicated and recommendations of cited sheet metal standard that apply to installation characteristics required unless otherwise indicated on Drawings.
- B. Metal Protection: Where dissimilar metals contact each other, or where metal contacts pressure-treated wood or other corrosive substrates, protect against galvanic action or corrosion by painting contact surfaces with bituminous coating or by other permanent separation as recommended by sheet metal manufacturer or cited sheet metal standard.
- C. Conceal fasteners and expansion provisions where possible in exposed work and locate to minimize possibility of leakage. Cover and seal fasteners and anchors as required for a tight installation.
- D. Seal joints as required for watertight construction.

SECTION 076200 - SHEET METAL FLASHING AND TRIM

3.3 INSTALLATION OF ROOF-DRAINAGE SYSTEM

A. Downspouts:

1. Join sections with 1-1/2-inch (38-mm) telescoping joints.
2. Provide hangers with fasteners designed to hold downspouts securely to walls.
3. Locate hangers at top and bottom and at approximately 60 inches (1500 mm) o.c.
4. Connect downspouts to underground drainage system.
5. Provide transitions as required to connect to existing collector boxes.

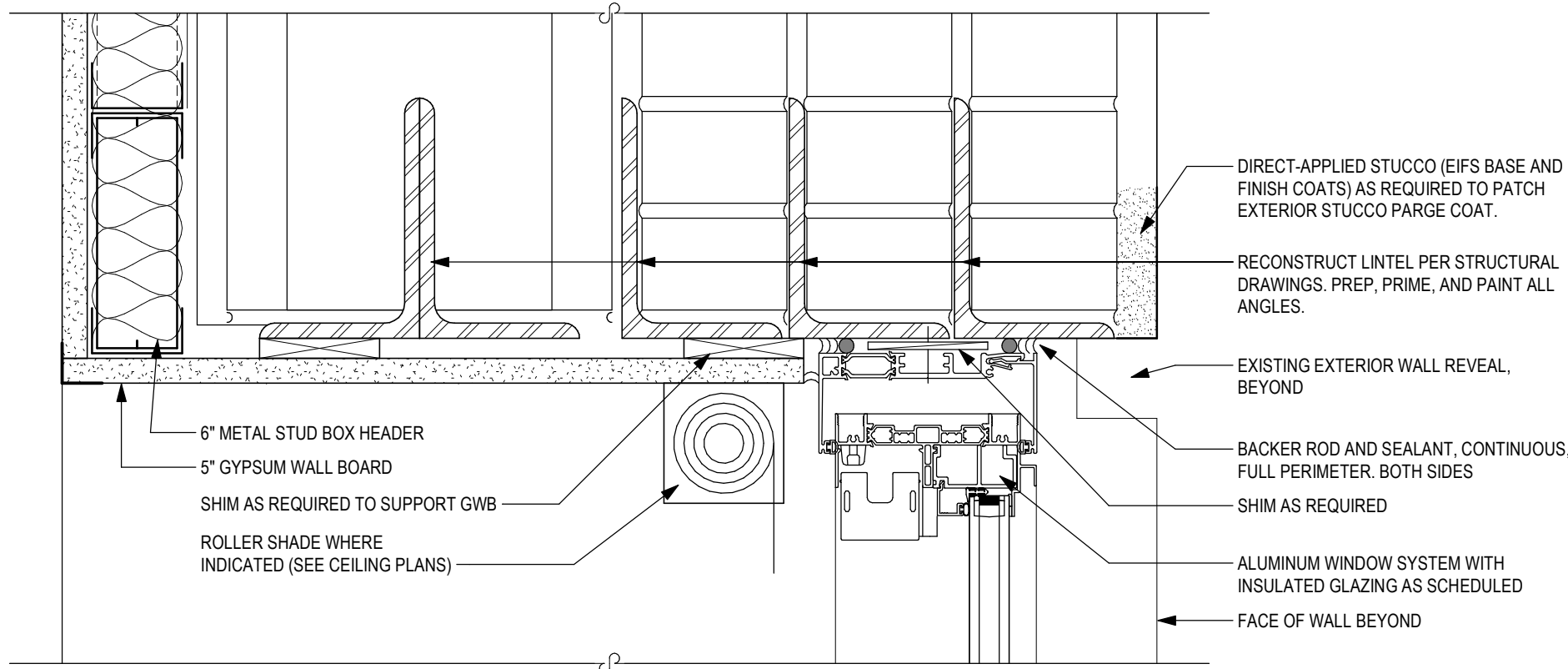
3.4 INSTALLATION OF WALL FLASHINGS

- #### A.
- Install sheet metal wall flashing to intercept and exclude penetrating moisture in accordance with cited sheet metal standard unless otherwise indicated. Coordinate installation of wall flashing with installation of wall-opening components such as windows, doors, and louvers.

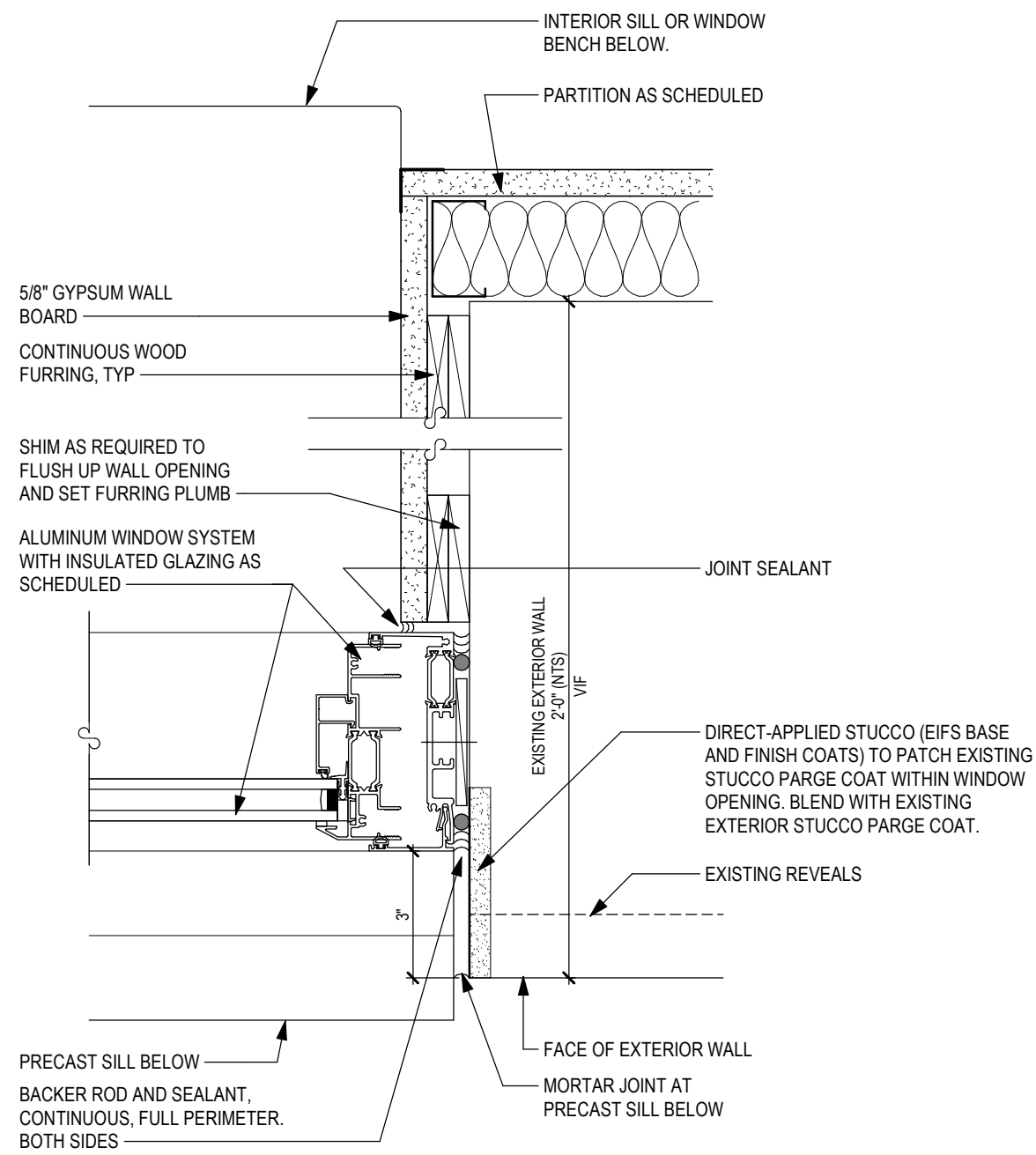
3.5 PROTECTION

- #### A.
- Remove temporary protective coverings and strippable films as sheet metal flashing and trim are installed unless otherwise indicated in manufacturer's written installation instructions.
- #### B.
- On completion of sheet metal flashing and trim installation, remove unused materials and clean finished surfaces as recommended in writing by sheet metal flashing and trim manufacturer.
- #### C.
- Maintain sheet metal flashing and trim in clean condition during construction.
- #### D.
- Replace sheet metal flashing and trim that have been damaged or that have deteriorated beyond successful repair by finish touchup or similar minor repair procedures, as determined by Architect.

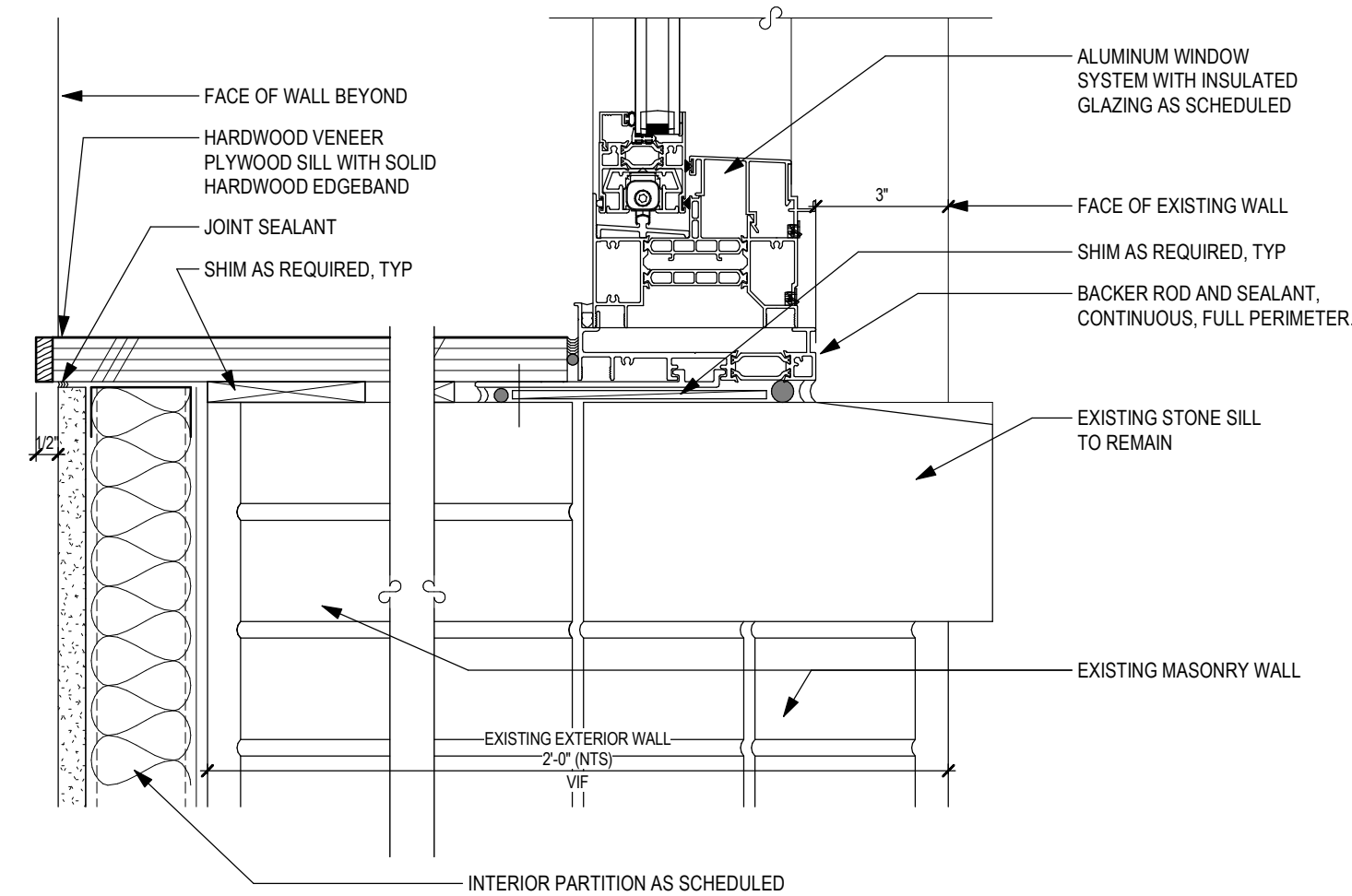
END OF SECTION



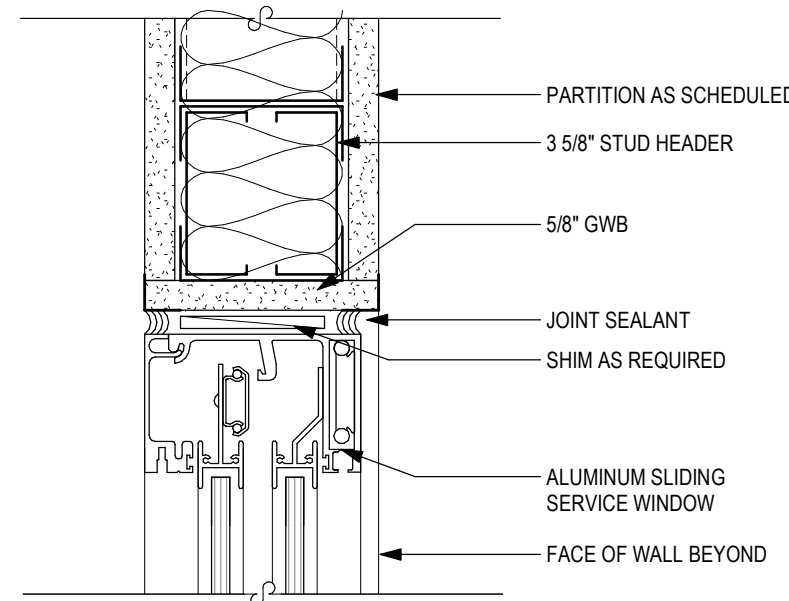
1 HEAD DETAIL
SCALE: 3" = 1'-0"



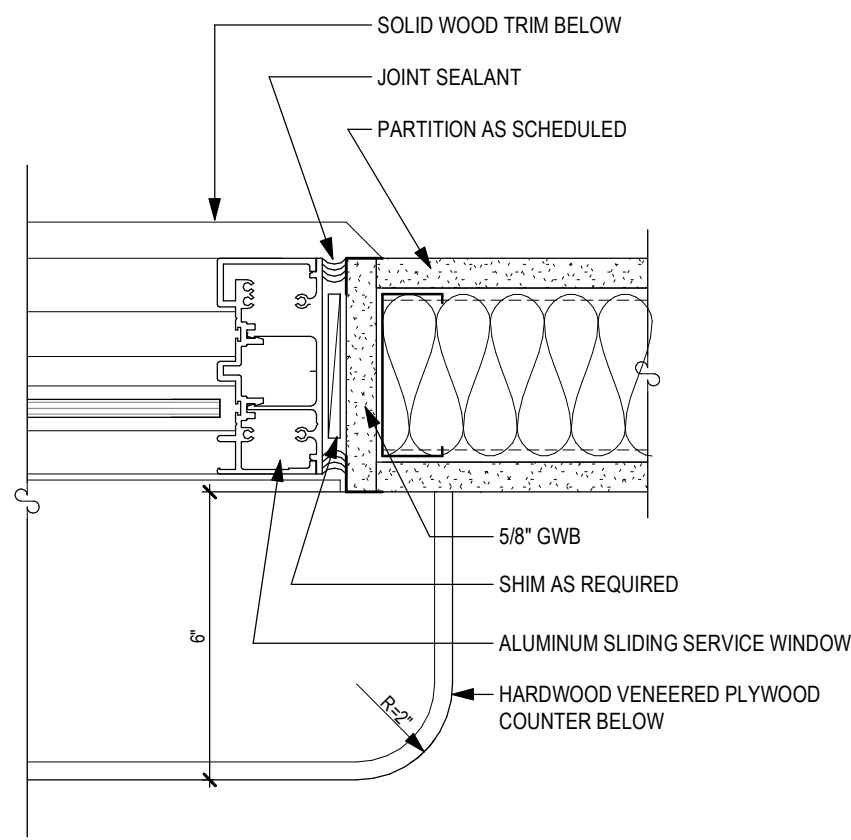
3 JAMB DETAIL
SCALE: 3" = 1'-0"



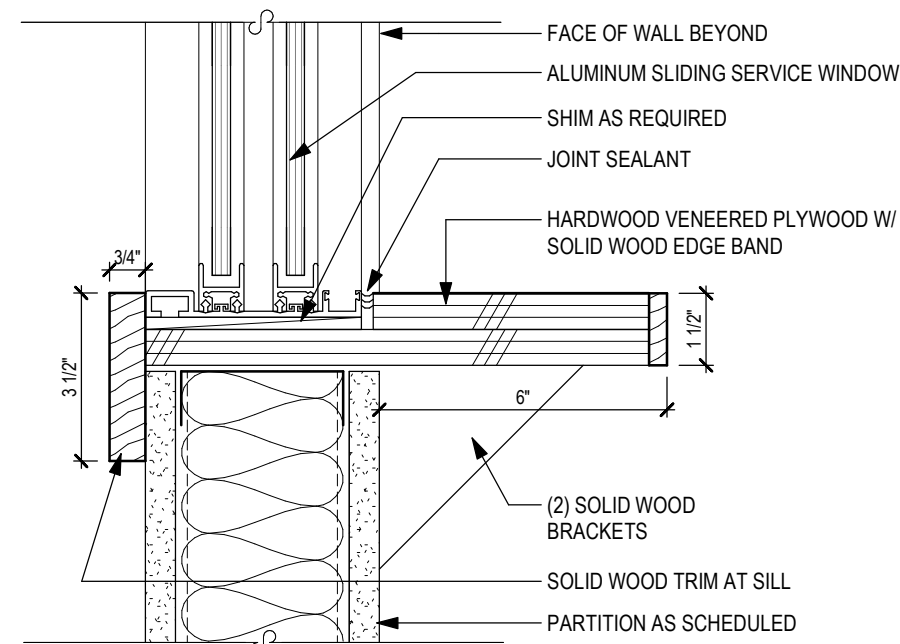
5 SILL DETAIL
SCALE: 3" = 1'-0"



2 HEAD DETAIL
SCALE: 3" = 1'-0"



4 JAMB DETAIL
SCALE: 3" = 1'-0"



6 SILL DETAIL
SCALE: 3" = 1'-0"

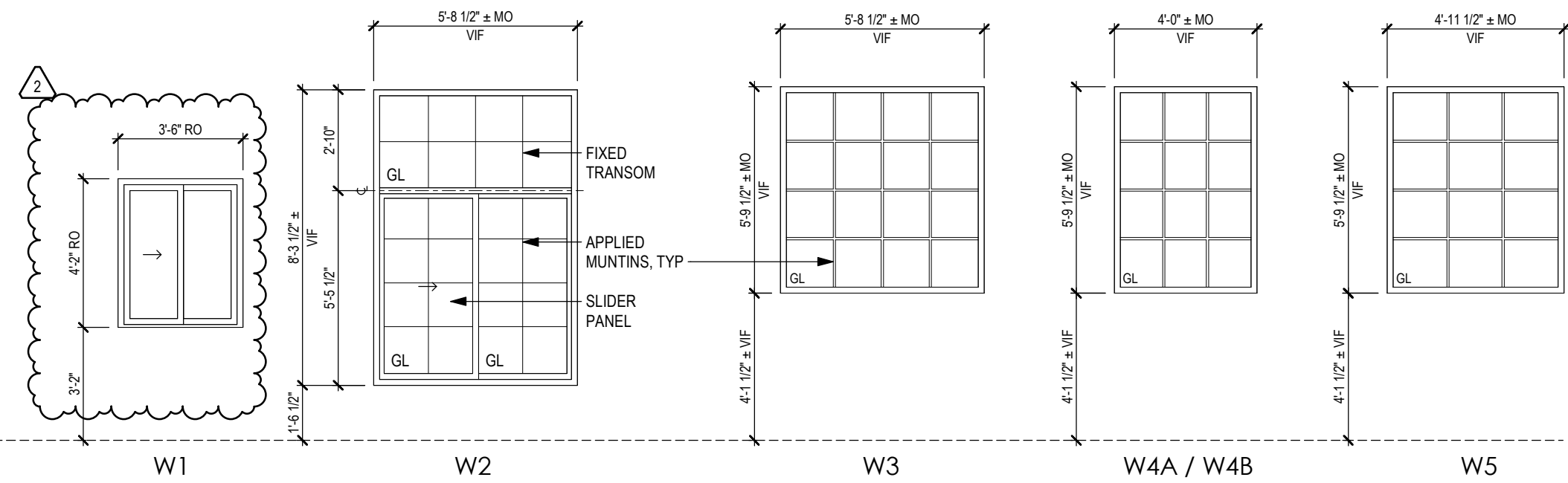
WINDOW SCHEDULE									
WINDOW TYPE	FRAME CONSTRUCTION	GLAZING TYPE	FRAME FINISH	WINDOW OPERATION	HEAD DETAIL	JAMB DETAIL	SILL DETAIL	FIRE RATING	REMARKS
W1	AL	LG	FF	SL	2/G 702	4/G 702	6/G 702	-	ALUMINUM SLIDING SERVICE WINDOW
W2	AL	INSG-1	AN	SL	1/G 702	3/G 702	7/G 702	-	
W3	AL	INSG-1	FF	FX	1/G 702	3/G 702	5/G 702	-	
W4A	AL	INSG-1	FF	FX	1/G 702	3/G 702	5/G 702	-	
W4B	AL	INSG-2	FF	FX	1/G 702	3/G 702	5/G 702	-	
W5	AL	INSG-1	FF	FX	1/G 702	3/G 702	5/G 702	-	

WINDOW SCHEDULE NOTES

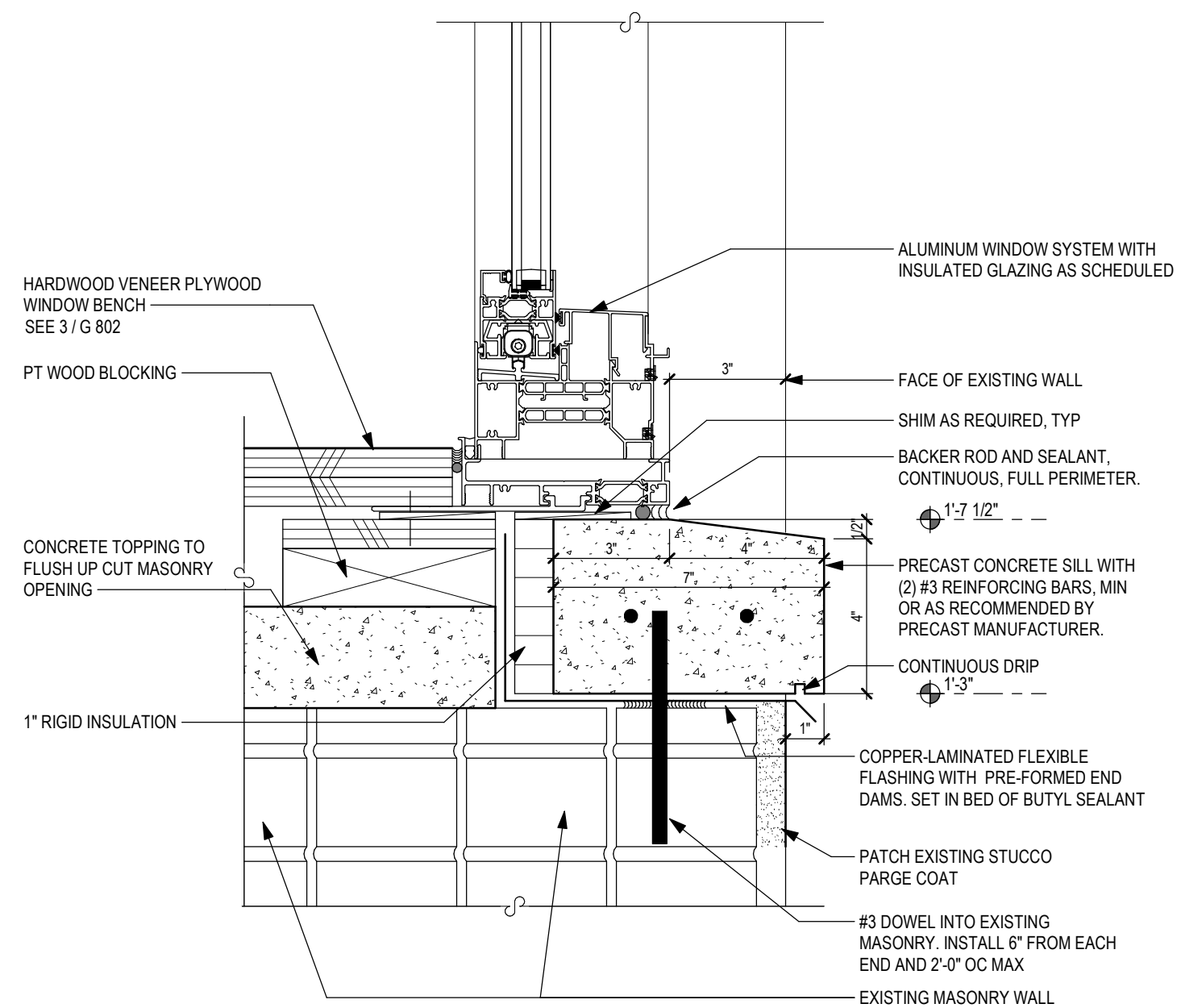
- ABBREVIATIONS:
AL ALUMINUM
AN ALUMINUM, ANODIZED
INSG INSULATED SAFETY GLAZING
- WINDOW SASH OPERATION:
FX FIXED
SL SLIDER
CS CASEMENT
- FRAME DETAILS: DESIGNATION INDICATES DETAIL NUMBER
- WINDOW TYPE: DESIGNATION INDICATES WINDOW TYPE NUMBER. SEE WINDOW TYPES FOR ADDITIONAL INFORMATION

GENERAL WINDOW NOTES

- SHIM ALL WINDOWS AS REQUIRED
- PROVIDE SEALANT AT FULL PERIMETER, BOTH SIDES OF WALL
- FILL ALL EXTERIOR FRAMES Voids WITH BATT INSULATION
- COORDINATE WINDOW UNIT SIZES WITH MASONRY OPENING DIMENSIONS AND DETAILS
- FIELD VERIFY SIZES OF EXISTING ROUGH OPENINGS AND ADJUST UNIT SIZES ACCORDINGLY
- SEE ELEVATIONS FOR OPERATION DIRECTION OF EACH OPERABLE WINDOW
- SEE CODE COMPLIANCE FLOOR PLANS FOR EMERGENCY RESCUE WINDOW (RW) LOCATIONS. PROVIDE STICKER AT EACH. EVERY RESCUE WINDOW SHALL HAVE A MINIMUM CLEAR OPENING AREA OF 5.7 SF, AND MINIMUM DIMENSION OF 24". WINDOW HARDWARE SHALL BE A MAXIMUM OF 54" A.F.F.



WINDOW TYPES
SCALE: 1/4" = 1'-0"



7 SILL DETAIL
SCALE: 3" = 1'-0"

SED NUMBERS: 6-15-00-01-0-009-013
BEFORE WORK IS STARTED, CONTRACTOR SHALL VERIFY ALL THE DIMENSIONS AT THE SITE AND IMMEDIATELY NOTIFY THE ARCHITECT OF ALL DISCREPANCIES. ALTERATION OF THIS DOCUMENT BY OTHER THAN AN AUTHORIZED LICENSED REGISTERED ARCHITECT IS ILLEGAL AND A VIOLATION OF SECTION 2307 OF THE NEW YORK STATE EDUCATION LAW.

Consultant:

Seal

Alterations to Administration Building

Peekskill City School District
Peekskill, New York

Revision:
05/21/2025
2) BSA A-04.02
06/04/2025

WINDOW TYPES, DETAILS, &
SCHEDULE

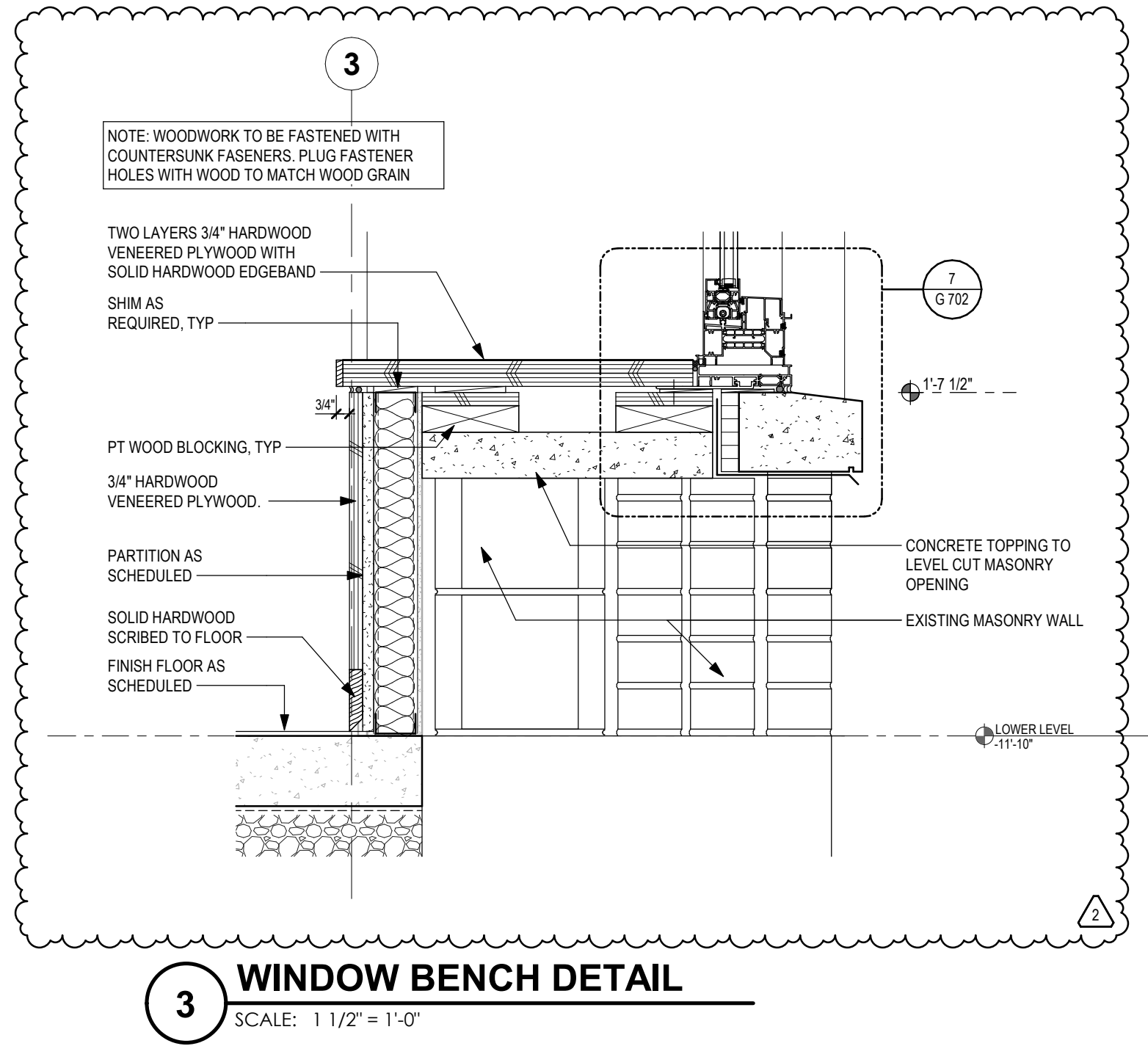
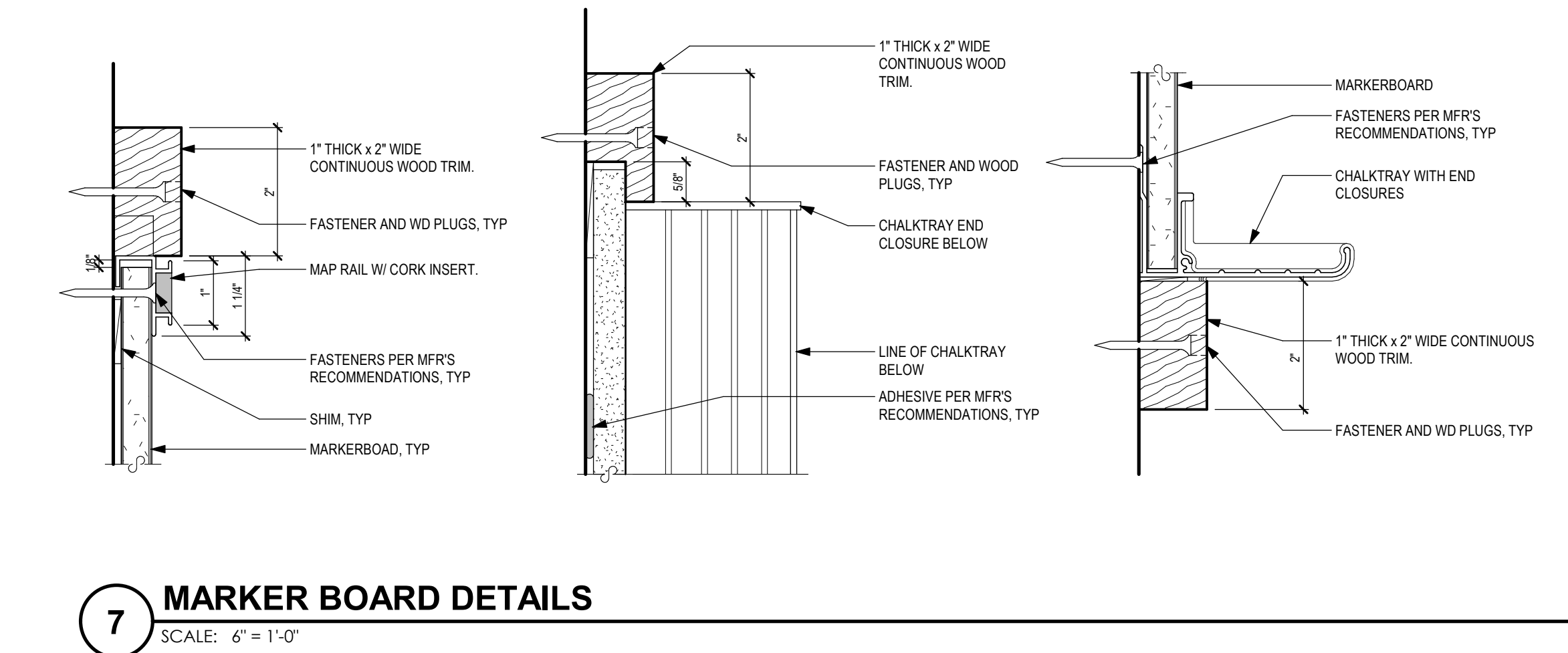
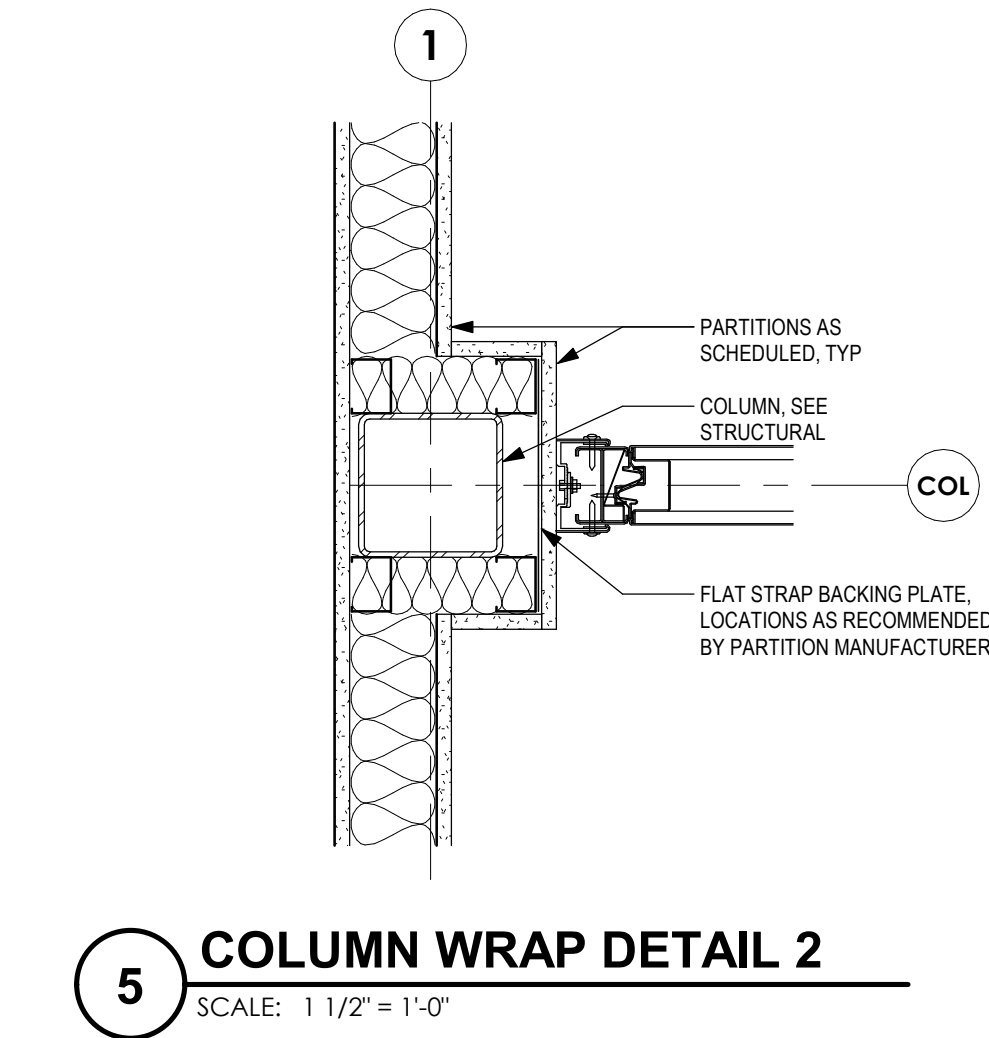
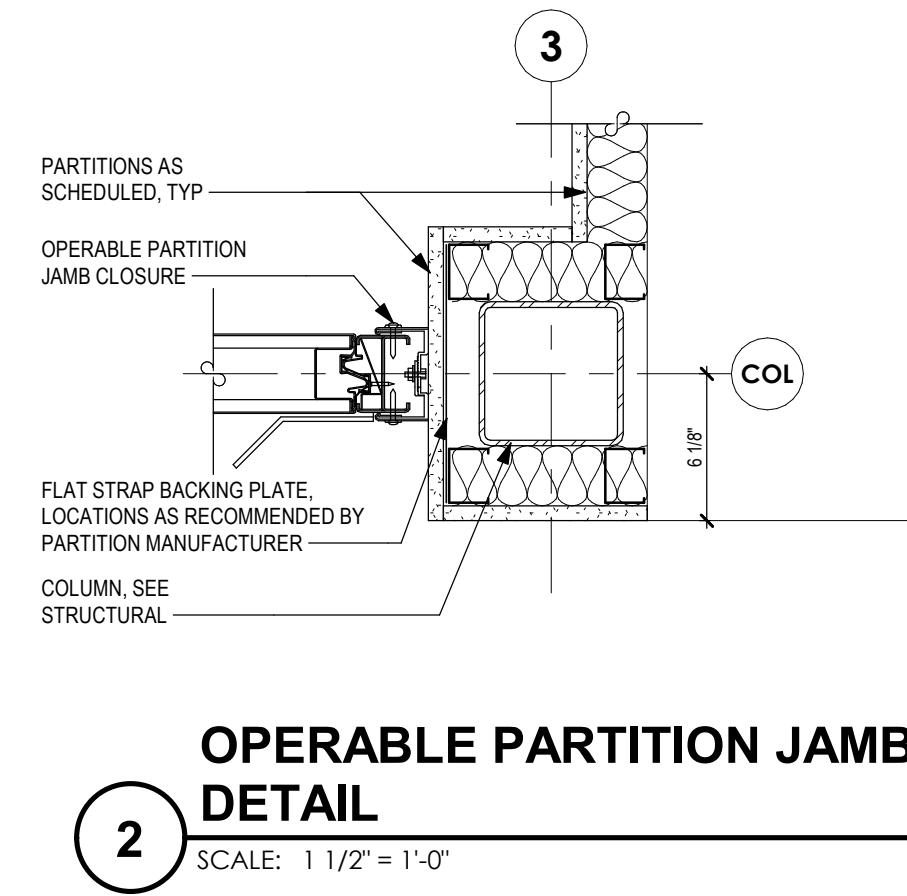
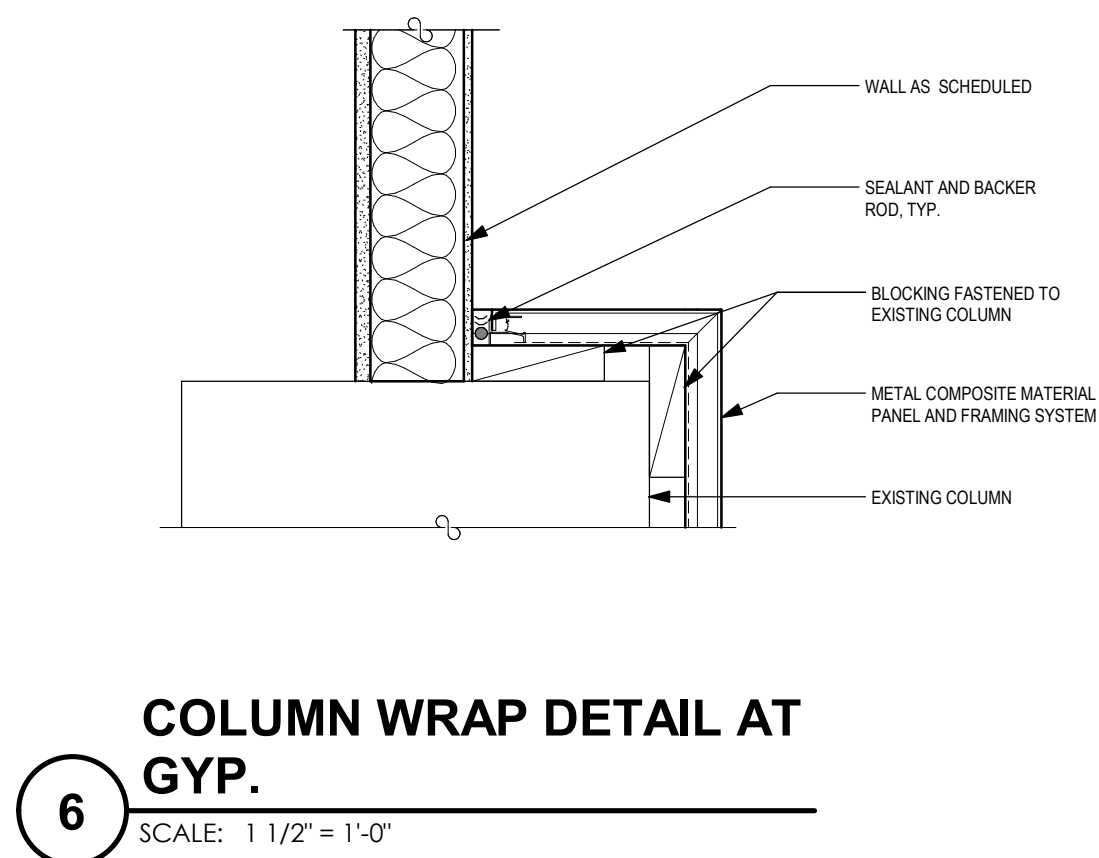
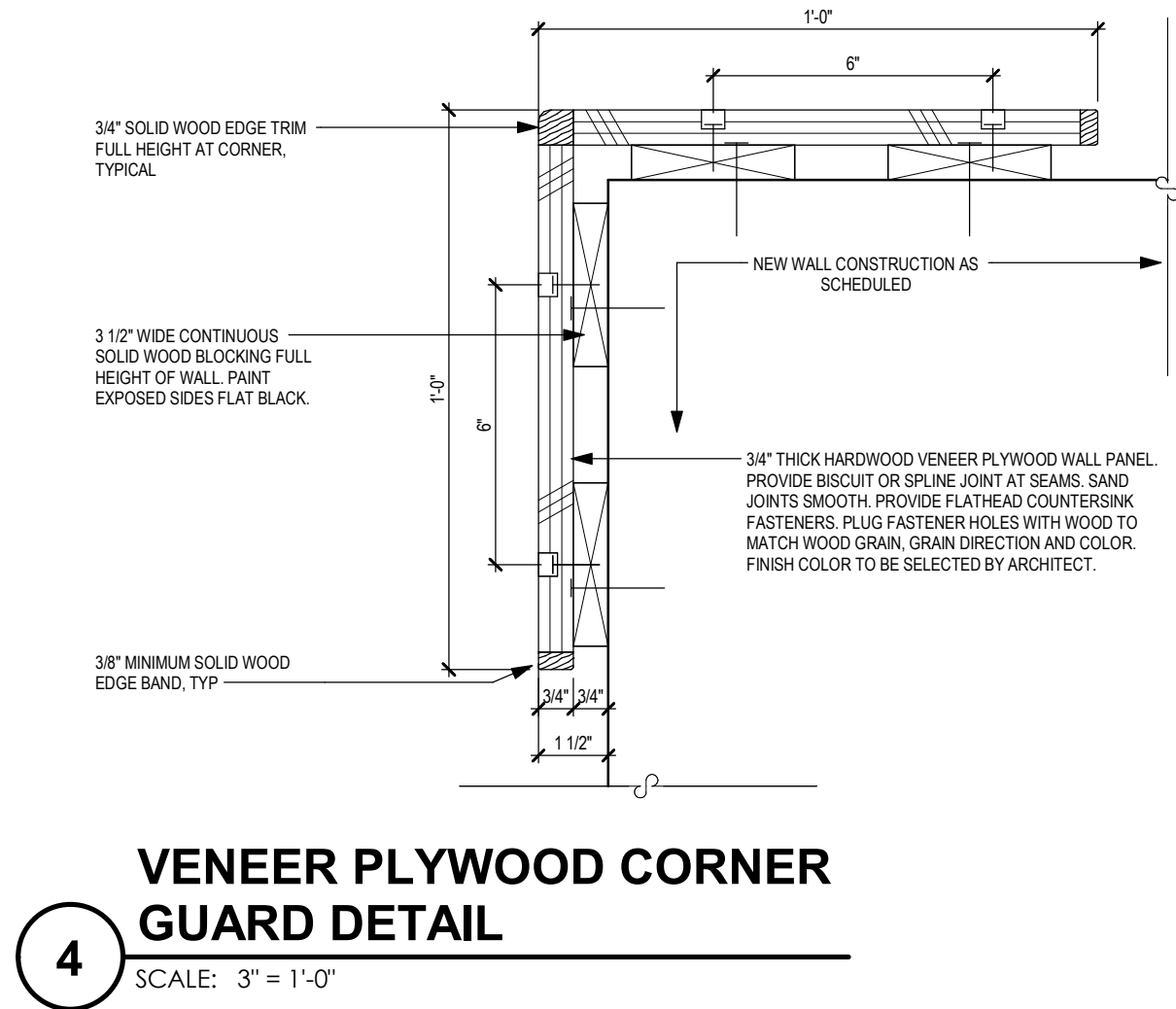
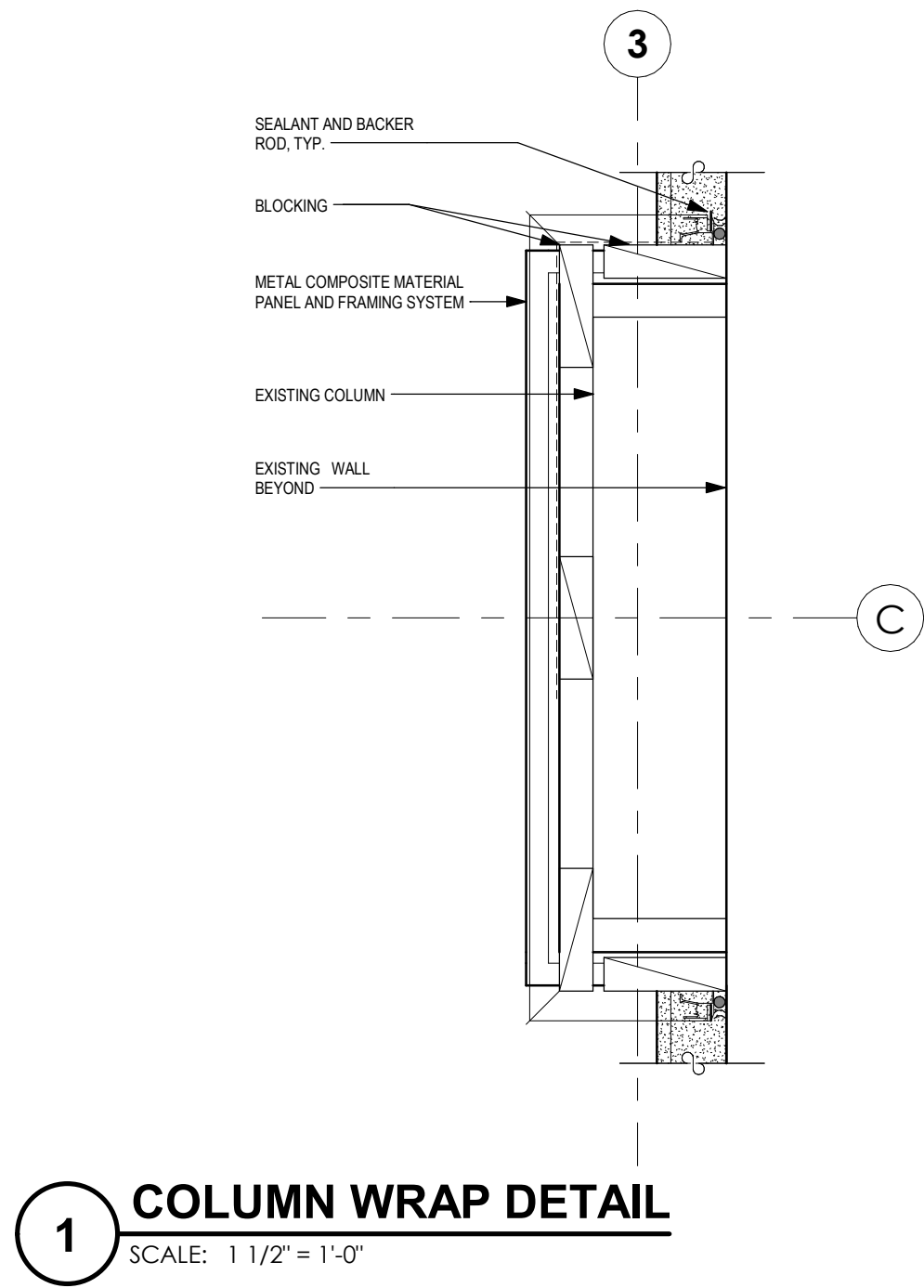
Drawing Number:

Drawn by: HWK

Date: October 11, 2024

APN: 2226.2A

**G
702**



SED NUMBERS: ■ Administration Building: 66-15-001-0-009-013
BEFORE WORK IS STARTED, CONTRACTOR SHALL VERIFY ALL THE DIMENSIONS AT THE SITE AND IMMEDIATELY NOTIFY THE ARCHITECT OF ALL DISCREPANCIES. ALTERATION OF THIS DOCUMENT BY OTHER THAN AN AUTHORIZED LICENSED REGISTERED ARCHITECT IS ILLEGAL AND A VIOLATION OF SECTION 2307 OF THE NEW YORK STATE EDUCATION LAW.

Drawing Title:

INTERIOR DETAILS

Revision:
05/21/2025
2 184 x 341 02 06/04/2025

Drawing Number:

G
802

Alterations to Administration Building

Peekskill City School District
Peekskill, New York

Consultant:

Seal

MOSAIC
ASSOCIATES

Mosaic Associates Architects, DPC
The Fear Building, 2 Third Street, Suite 440, Troy, NY 12180