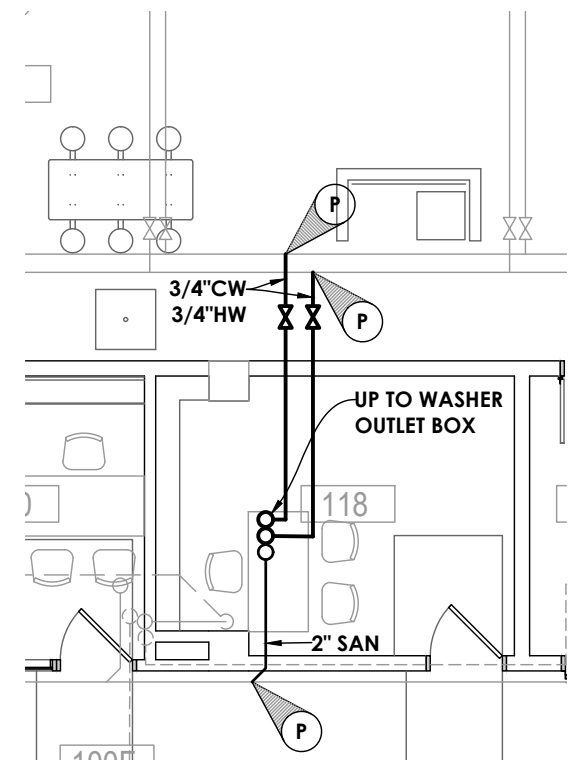
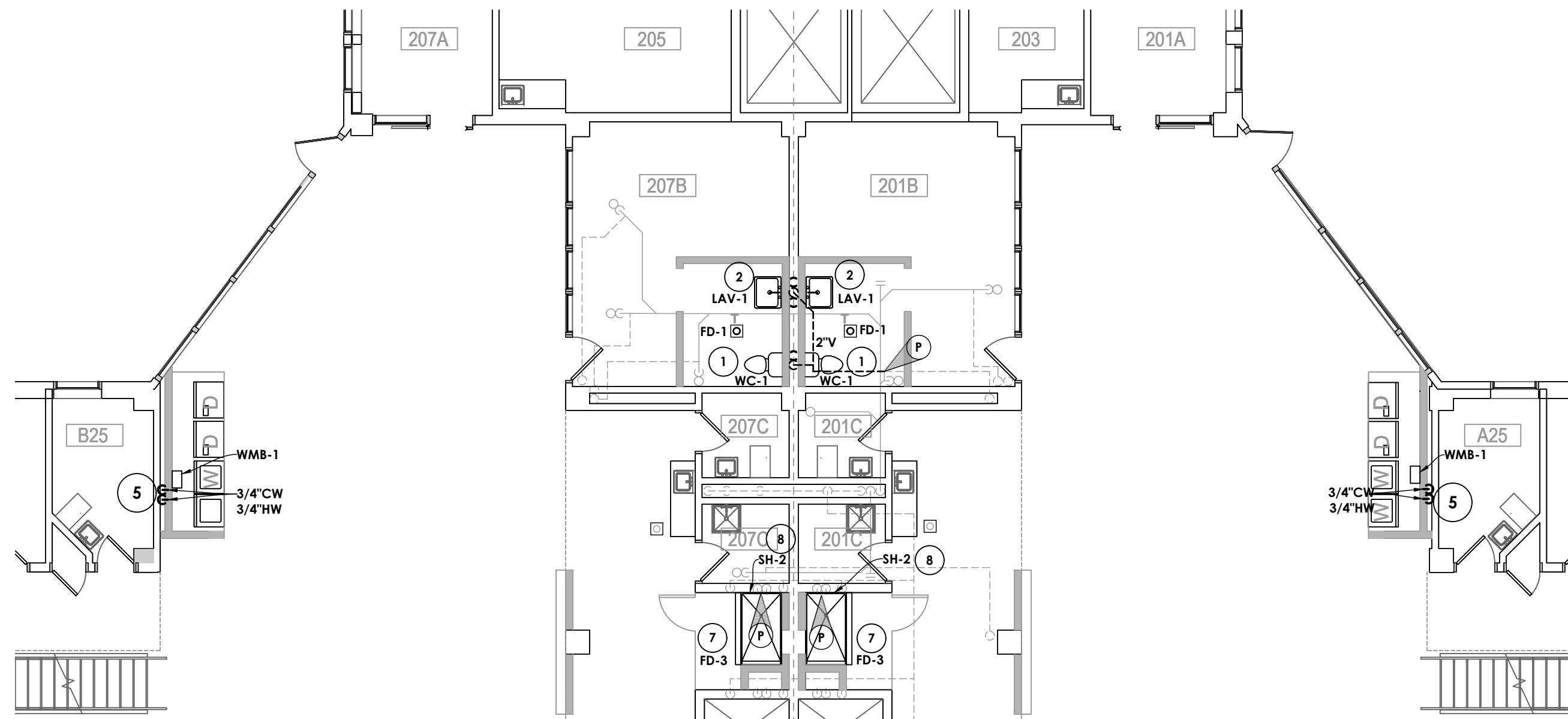
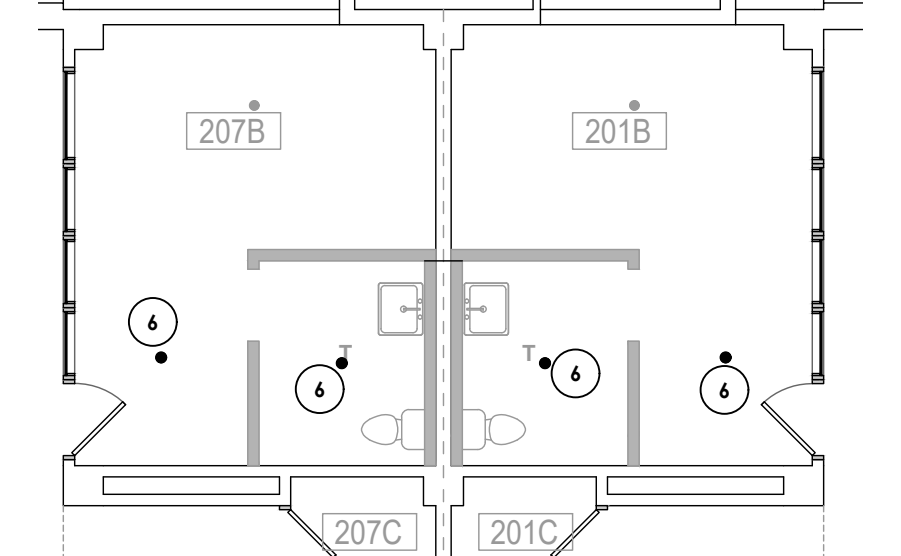
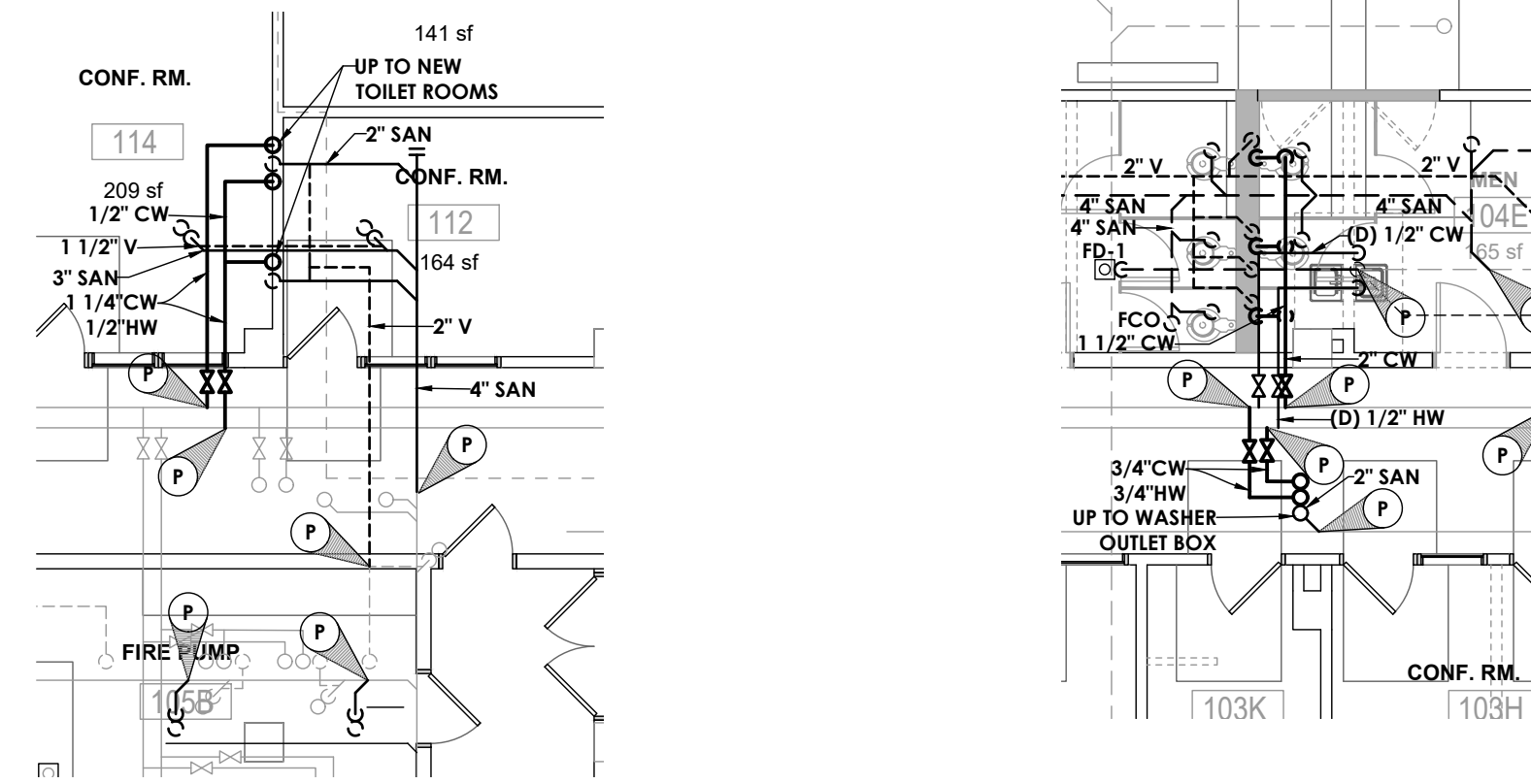


**KEY NOTES:**

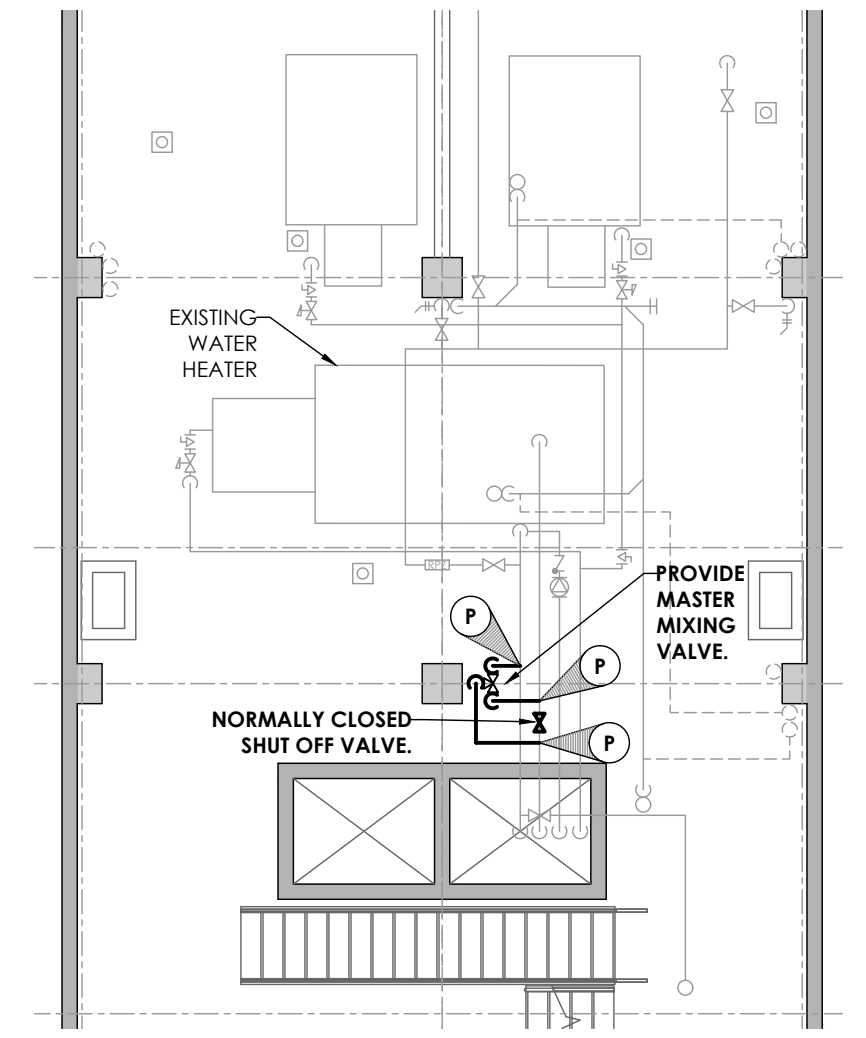
- ① PROVIDE FLOOR MOUNTED WATER CLOSET, COLD WATER SUPPLY LINE, SUPPLY SHUT OFF VALVE, SANITARY PIPING, & VENT PIPING.
- ② PROVIDE LAVATORY, SUPPORTS, DOMESTIC WATER SUPPLY LINES, SUPPLY SHUT OFF VALVES, P-TRAP, SANITARY PIPING, & VENT PIPING.
- ③ PROVIDE ADA SHOWER WITH HEAD AND VALVE ASSEMBLY, COLD & HOT WATER SUPPLY LINES, & SUPPLY SHUT OFF VALVES.
- ④ SAWCUT FLOOR ALONG NEW SANITARY LOCATION BACK TO POINT OF CONNECTION, FOR INSTALLATION OF NEW PIPE.
- ⑤ PROVIDE WASHING MACHINE RECEPTOR BOX, DOMESTIC WATER SUPPLY LINES, SUPPLY SHUT OFF VALVES, P-TRAP, SANITARY PIPING, & VENT PIPING.
- ⑥ PROVIDE CONCEALED SPRINKLER HEAD AND CONNECT TO NEAREST SPRINKLER SYSTEM MAIN.
- ⑦ PROVIDE LINEAR DRAIN AT SHOWER ENTRY. GRIND DOWN SLAB AS REQUIRED TO ACCOMMODATE DRAIN INSTALL. GRATE SHOULD BE FLUSH WITH FINISHED FLOOR.
- ⑧ RECONNECT TO EXISTING COLD AND HOT WATER.



**1 2ND FLOOR PLUMBING INSTALLS**  
SCALE: 1/8" = 1'-0"



**2 2ND FLOOR SPRINKLER INSTALLS**  
SCALE: 1/8" = 1'-0"



**3 3RD FLOOR PLUMBING INSTALLS**  
SCALE: 1/8" = 1'-0"

Submissions

No.	Description	Date

© TINKELMAN ARCHITECTURE PLLC | 2023  
 ALL RIGHTS RESERVED. NO REPRODUCTION OF THIS DRAWING OR ANY PORTION THEREOF IS PROHIBITED WITHOUT THE WRITTEN PERMISSION OF THE ARCHITECT. UNAUTHORIZED REPRODUCTION OR MODIFICATION TO THIS DRAWING BEARING THE SEAL OF A LICENSED ARCHITECT IS A VIOLATION OF SECTION 2308 SUBSECTION 2 OF THE NEW YORK STATE EDUCATION LAW.

1/15/2023 10:30:35 AM