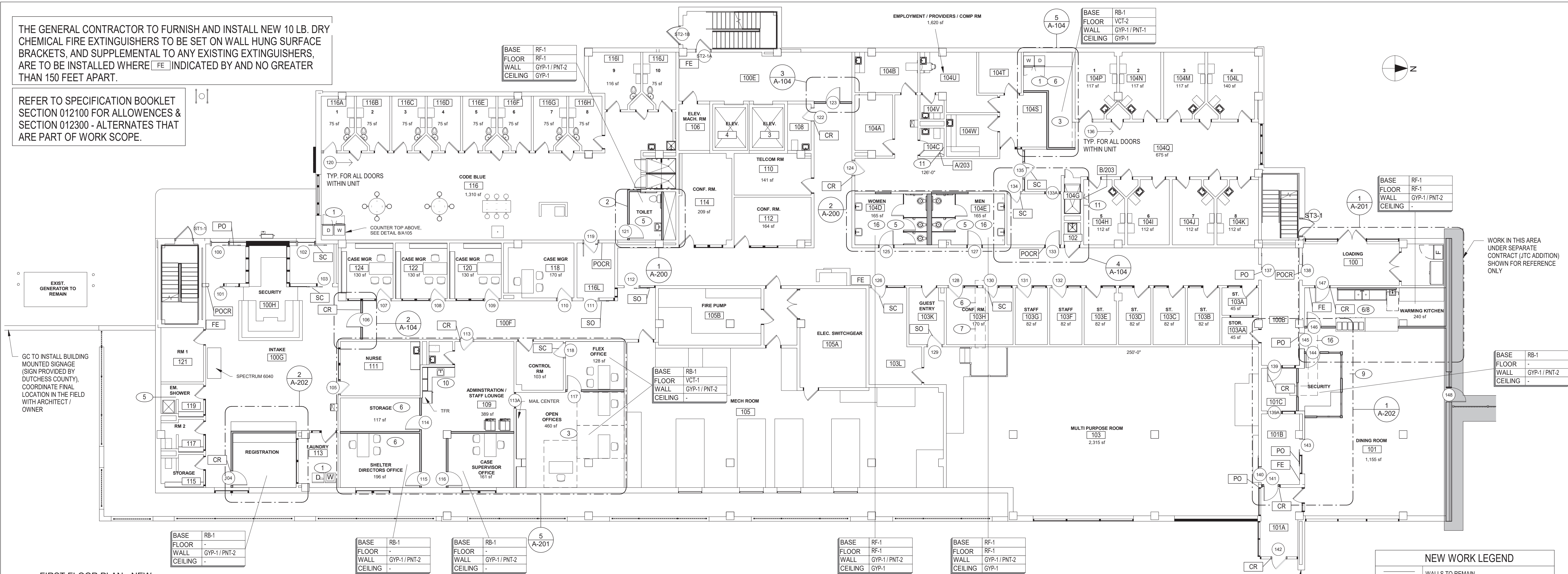


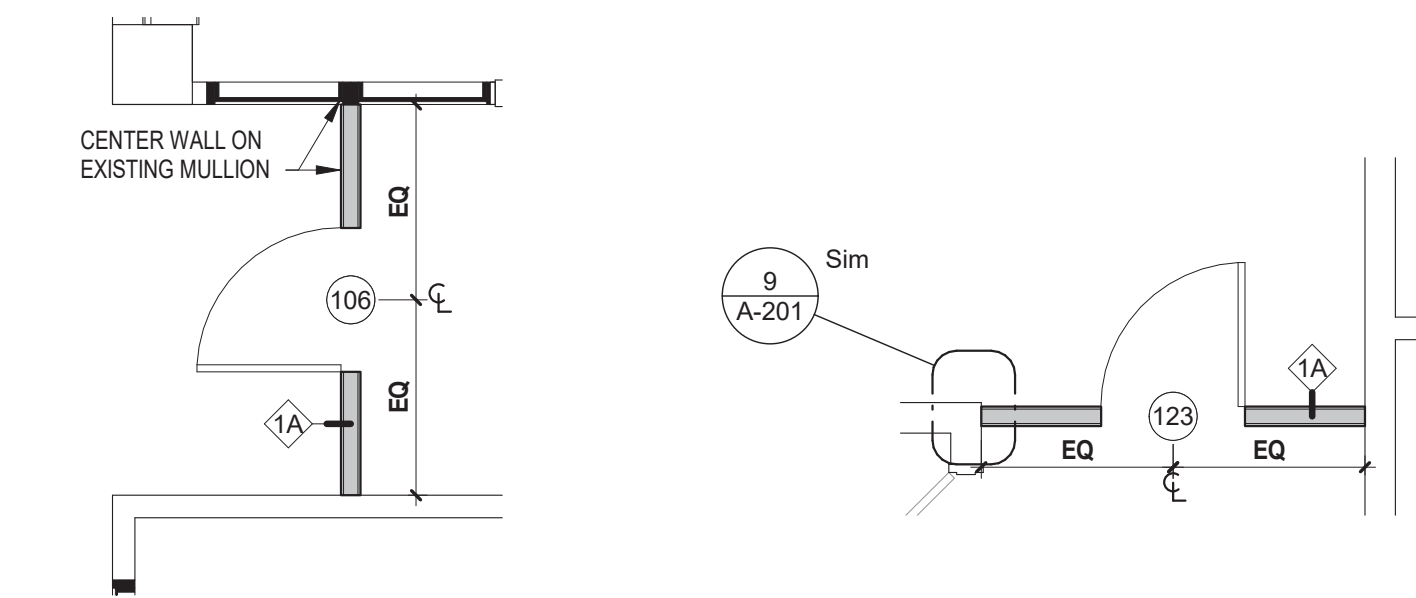
THE GENERAL CONTRACTOR TO FURNISH AND INSTALL NEW 10 LB. DRY CHEMICAL FIRE EXTINGUISHERS TO BE SET ON WALL HUNG SURFACE BRACKETS, AND SUPPLEMENTAL TO ANY EXISTING EXTINGUISHERS, ARE TO BE INSTALLED WHERE FE INDICATED BY AND NO GREATER THAN 150 FEET APART.

REFER TO SPECIFICATION BOOKLET SECTION 012100 FOR ALLOWANCES & SECTION 012300 - ALTERNATES THAT ARE PART OF WORK SCOPE.



FIRST FLOOR PLAN - NEW ARCHITECTURAL WORK

3/32" = 1'-0"
0 5 15 35 FT

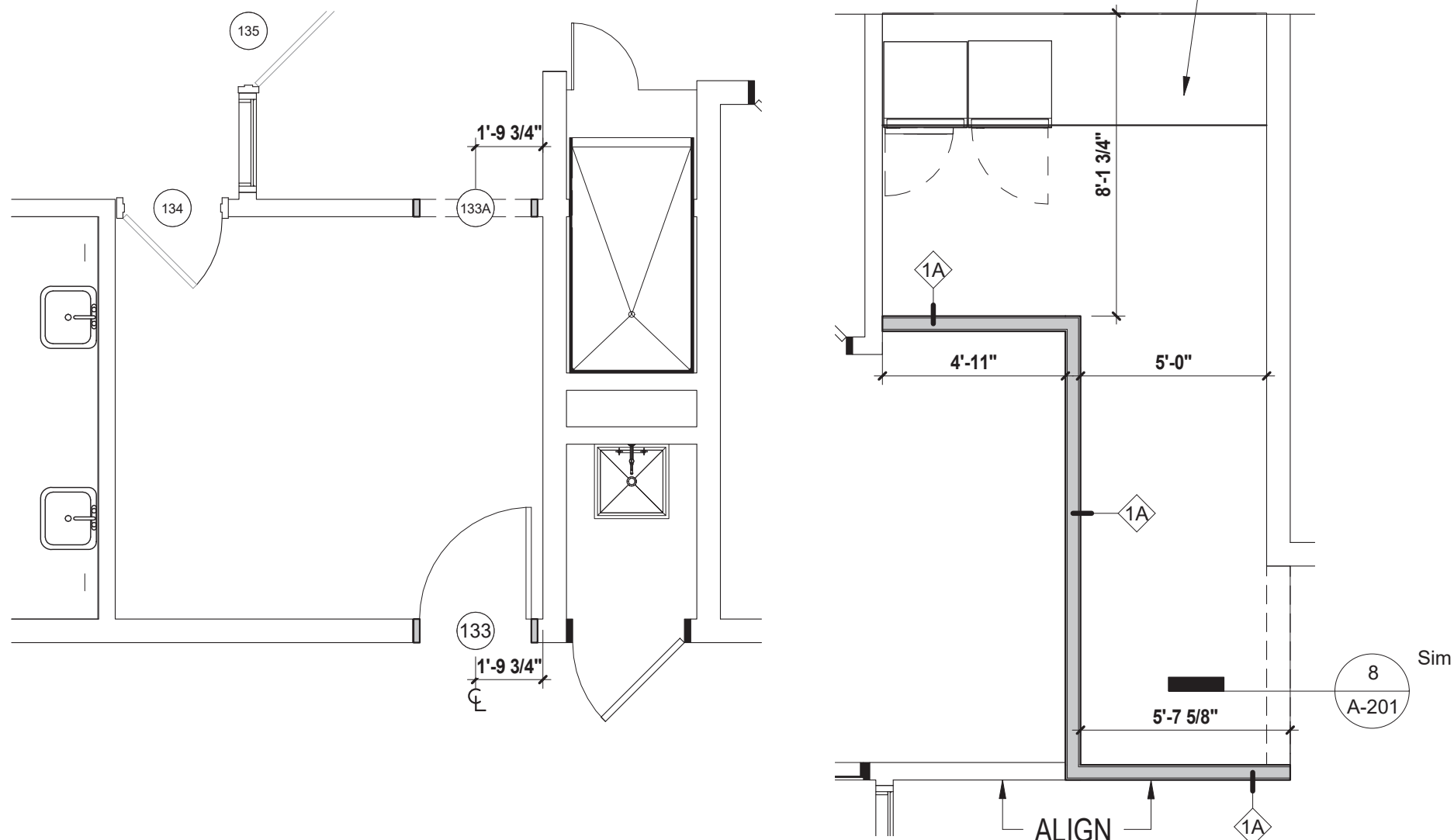


FIRST FLOOR - INTAKE DOOR 100G

1/4" = 1'-0"

FIRST FLOOR - DOOR TO ELEVATOR

1/4" = 1'-0"



FIRST FLOOR - DOOR TO 104Q

1/4" = 1'-0"

FIRST FLOOR - LAUNDRY AREA

1/4" = 1'-0"

MATERIAL SCHEDULE - INTERIOR FINISHES

FLOOR FINISHES					
VCT FLOORING	MANUFACTURER	STYLE	COLOR / NAME	SIZE	NOTE
VCT-1	ARMSTRONG	STANDARD EXCELON	SELECTED FROM MANUFACTURER'S FULL RANGE	12" X 12"	
VCT-2	ARMSTRONG	STANDARD EXCELON	SELECTED FROM MANUFACTURER'S FULL RANGE	12" X 12"	
RESINOUS FLOORING					
RF-1	DEX-O-TEX	DECOR-FLO	SELECTED FROM MANUFACTURER'S FULL RANGE	1/8" THICKNESS	WITH INTEGRAL 4" COVE BASE
FLOOR PAINT					
GC-2	SHERWIN WILLIAMS	PAINTED	SAGE / SW 2860		ALTERNATE GC-2
GC-3	SHERWIN WILLIAMS	PAINTED, GLOSS OR STAIN	PAVESTONE / SW 7642		ALTERNATE GC-3
CARPET TILE					
CPT-1	INTERFACE	NET EFFECT	SELECTED FROM MANUFACTURER'S FULL RANGE	50CM X 50CM	
BASE FINISHES					
RUBBER BASE	MANUFACTURER	STYLE	COLOR / NAME	SIZE	NOTE
RB-1	ROPPE	VINYL WALL BASE	SELECTED FROM MANUFACTURER'S FULL RANGE	4"	
WALL FINISHES					
GYP-1	USG OR APPROVED EQ.	PAINTED, FLAT FINISH	TYPE 'X'	5/8"	USE MOISTURE RESISTANT GYPSUM IN WET AREAS
CEILING FINISHES					
GYP-1	USG OR APPROVED EQ.	PAINTED, FLAT FINISH	TYPE 'X'	5/8"	
ACOUSTIC CEILING TILE					
ACT-1	ARMSTRONG	FINE FISSURED	WHITE	12" X 12"	
PAINT FINISHES					
WALL PAINT	MANUFACTURER	STYLE	COLOR / NAME	SIZE	NOTE
PNT-1	SHERWIN WILLIAMS	PAINTED, EG-SHEL	SELECTED FROM MANUFACTURER'S FULL RANGE		
PNT-2	SHERWIN WILLIAMS	PAINTED, EG-SHEL	SELECTED FROM MANUFACTURER'S FULL RANGE		
PNT-3	SHERWIN WILLIAMS	PAINTED, GLOSS	SELECTED FROM MANUFACTURER'S FULL RANGE		
DOOR PAINT	MANUFACTURER	STYLE	COLOR / NAME	SIZE	NOTE
GC-1	SHERWIN WILLIAMS	PAINTED	RESOLUTE BLUE / SW 6507		ALTERNATE GC-1
DOOR FRAME / STAIR RAILINGS					
GC-1	SHERWIN WILLIAMS	PAINTED	DISTANCE / SW 6243		ALTERNATE GC-1

ALTERNATE GC-1: DOOR AND RAILING PAINTING - ADD:
WILL INCLUDE THE PROPER SURFACE PREPARATION, PRIMING AND PAINTING OF ALL SIDES OF EXISTING METAL DOORS, METAL DOOR FRAMES (NOT INCLUDING ACCESS PANELS) AND STAIR HANDRAILS, GUARDRAILS AND RAIL, PANELS AND ASSOCIATED METAL COMPONENTS, WITH A 3-COAT WATER-BASED PRIMER AND URETHANE COATING SYSTEM IN ACCORDANCE WITH THE INTERIOR PAINTING SPECIFICATION, SECTION 099000, AT THE FOLLOWING LOCATIONS:

- SECOND AND THIRD FLOOR LEVELS OF MEN 207, INCLUDING ALL B-TYPE SLEEPING ROOM DOORS.
- SECOND AND THIRD FLOOR LEVELS OF WOMEN 201, INCLUDING ALL A-TYPE SLEEPING ROOM DOORS.
- SUITE 104Q, INCLUDING ALL SLEEPING ROOMS H-P.
- CODE BLUE SUITE 116, INCLUDING ALL SLEEPING ROOMS A-J.

INITIAL PAINT COLOR SCHEDULE:
METAL DOORS: SHERWIN-WILLIAMS, RESOLUTE BLUE, SW 6507
SUBMISSION OF 8" X 10" PAINT SAMPLES SHOWING COLOR AND SHEEN WILL BE REQUIRED FOR OWNER APPROVAL AND POTENTIAL RESELECTION.

ALTERNATE GC-2: FLOOR PAINTING - ADD:
WILL INCLUDE THE PROPER SURFACE PREPARATION AND PAINTING OF ALL SLEEPING ROOM EXISTING CONCRETE FLOORS. EXISTING FLOORS MUST BE CLEAN, DRY, AND FREE OF WAX AND OILS. ANY RESIDUAL ADHESIVES OR FOREIGN MATERIALS MUST BE REMOVED PRIOR TO THE PRIMER AND FINISH PAINT APPLICATION. CONCRETE FLOORS WILL BE FINISHED WITH A 2-COAT LATEX, CONCRETE (NON-VEHICULAR) PAINTING SYSTEM IN ACCORDANCE WITH THE INTERIOR PAINTING SPECIFICATION, SECTION 099000, AT THE FOLLOWING LOCATIONS:

- SECOND AND THIRD FLOOR MEN 207, B-TYPE SLEEPING ROOM FLOORS.
- SECOND AND THIRD FLOOR WOMEN 201, A-TYPE SLEEPING ROOM FLOORS.
- SUITE 104Q, SLEEPING ROOMS H-P FLOORS.
- CODE BLUE SUITE 116, SLEEPING ROOMS A-J FLOORS.

PAINT COLOR SCHEDULE:
CONCRETE FLOORS: SHERWIN-WILLIAMS, SAGE, SW 2860
SUBMISSION OF 8" X 10" PAINT SAMPLES SHOWING COLOR AND SHEEN WILL BE REQUIRED FOR OWNER APPROVAL AND POTENTIAL RESELECTION.

ALTERNATE GC-3: FLOOR PAINTING - ADD:
WILL INCLUDE THE PROPER SURFACE PREPARATION AND PAINTING FIRST FLOOR FORMER HOLDING CELL ROOMS WITH EXISTING CONCRETE FLOORS. EXISTING FLOORS MUST BE CLEAN, DRY, AND FREE OF WAX AND OILS. ANY RESIDUAL ADHESIVES OR FOREIGN MATERIALS MUST BE REMOVED PRIOR TO THE PRIMER AND FINISH PAINT APPLICATION. CONCRETE FLOORS WILL BE FINISHED WITH A 2-COAT LATEX, CONCRETE (NON-VEHICULAR) PAINTING SYSTEM IN ACCORDANCE WITH THE INTERIOR PAINTING SPECIFICATION, SECTION 099000, AT THE FOLLOWING LOCATIONS:

- INTAKE AREAS: 115, 117, 119, 121.
- ROOMS 118, 120, 122, 124
- ROOMS 103B THROUGH H, AND 103A, 103AA

PAINT COLOR SCHEDULE:
CONCRETE FLOORS: SHERWIN-WILLIAMS, PAVESTONE, SW 7642
SUBMISSION OF 8" X 10" PAINT SAMPLES SHOWING COLOR AND SHEEN WILL BE REQUIRED FOR OWNER APPROVAL AND POTENTIAL RESELECTION.

NEW WORK LEGEND

	WALLS TO REMAIN
	NEW WALLS
	NEW WORK AREA NOTE TAG
	NEW DOOR
	EXISTING DOOR

NEW WORK SCOPE NOTES

- INSTALL WASHER/DRYER AS PER MANUFACTURER'S SPECIFICATIONS. SEE MEP DRAWINGS FOR MORE INFORMATION AND COORDINATE WORK WITH MEP PRIME CONTRACTORS.
- INSTALL NEW WALL PARTITION. SEE WALL PARTITION TYPES FOR WALL CONSTRUCTION.
- GC TO INSTALL NEW VCT FLOORING AS PER MANUFACTURER'S SPECIFICATIONS.
- THE GENERAL CONTRACTOR TO VERIFY IN FIELD EXISTING CMU WALL OPENING FOR SIZE OF NEW DOOR AND MODIFY OPENING AS NEEDED FOR INSTALLATION OF NEW DOOR. NEW DOOR HARDWARE TO BE INSTALLED AS PER MANUFACTURER'S SPECIFICATIONS FOR MORE INFORMATION.
- THE PLUMBING PRIME CONTRACTOR TO INSTALL ALL TOILETS & SINKS. PLUMBING FIXTURES AS PER MANUFACTURER'S SPECIFICATIONS AND ALL APPLICABLE CODES. THE GENERAL CONTRACTOR IS TO INSTALL ALL TOILET PARTITIONS & PLUMBING ACCESSORIES. SEE ENLARGED TOILET PLANS & DETAILS FOR MOUNTING HEIGHTS. SEE MEP DRAWINGS FOR MORE INFORMATION.
- THE GENERAL CONTRACTOR TO PATCH FLOOR AND PROVIDE SMOOTH & SEAMLESS FINISH.
- CEILING TO MATCH EXISTING AND PROVIDE SMOOTH & SEAMLESS FINISH. THE GENERAL CONTRACTOR IS TO VIF. THE PAINT FINISH & SHEEN IF NOT SPECIFIED.
- IN WARMING KITCHEN, THE PRIME PLUMBING CONTRACTOR TO INSTALL 2 BAY SINK, HAND WASH SINK. THE GENERAL CONTRACTOR IS TO INSTALL STAINLESS STEEL TABLE, FREEZER, AND REFRIGERATOR. ALL ARE TO BE INSTALLED PER MANUFACTURER'S SPECIFICATIONS, AND ALL APPLICABLE CODES. SEE INTERIOR ELEVATIONS FOR MORE INFORMATION.
- RENOVATE AREA TO PROVIDE NEW SECURE ENTRANCE AND SECURITY BOOTH.
- IN ADMIN/STAFF LOUNGE, THE GENERAL CONTRACTOR TO INSTALL COUNTER, AND CABINETS. CONTRACTOR SHALL PROVIDE ALL NECESSARY WOOD BLOCKING, WHERE NECESSARY FOR MOUNTING OF CABINETS/COUNTER. COORDINATE NEW SINK INSTALLATION WITH PRIME PLUMBING CONTRACTOR.
- CLEAN & PAINT DAMAGED WALL TO MATCH EXISTING. DC CONFIRMED CAUSE OF LEAK WAS SOLVED. SEE CUTTING AND PATCHING NOTED FOR MORE INFORMATION.
- EPOXY FLOOR FINISH AREAS WHERE FLOOR FINISH WAS REMOVED. COLOR TO MATCH EXISTING FLOOR FINISH COLOR, CONFIRMED BY ARCHITECT.
- PLUMBING CONTRACTOR TO POUR NEW CONCRETE FLOOR WHERE TRENCHING OCCURRED. SEE DETAIL 1/6101 FOR MORE INFORMATION.

Consultant
CPL
CPL | Architecture Engineering Planning
50 Front Street, Suite 202
Newburgh, NY 12550
CPLteam.com

DC TEMPORARY HOMELESS SHELTER
RFB-DCB-01-24
150 N HAMILTON STREET
POUGHKEEPSIE, NY 12601

Submissions

No.	Description	Date
1	ISSUED FOR BID	01/18/2024

© TINKELMAN ARCHITECTURE PLLC | 2023
ALL RIGHTS RESERVED. COPY OR REPRODUCTION OF THIS DRAWING OR ANY PORTION THEREOF IS PROHIBITED WITHOUT THE WRITTEN PERMISSION OF THE ARCHITECT. UNAUTHORIZED ALTERATION OR ADDITION TO A DRAWING VIOLATES THE SEAL OF A LICENSED ARCHITECT AS A VIOLATION OF SECTION 208 SUBSECTION 6 OF THE NEW YORK STATE EDUCATION LAW.

TA
TINKELMAN
ARCHITECTURE
33 Arlington Avenue, 2nd Floor, Poughkeepsie, NY
914-473-0200 | view our work at tskarch.com



FIRST FLOOR PLAN - NEW WORK

Proj. No. C2349.00
Date 01/18/2024

A-104